



CENTRAL
VALLEY
COMMERCIAL
BROKERS, INC

FOR LEASE

1612 20th Street.

APN: 005-451-05-00-8



Property Details

- Centrally located
- CB Zoned
- Modified gross leases
- 10,000 sq. ft. total
- 6-month leases available
- Negotiable leasing rate
- 1610 20th – 730 SF. **LEASED**
- Suite 2 - 167 SF. with sink **AVAILABLE**
- Suite 4 - 467 SF. with sink **LEASED**
- Suite 5 – 467 SF. **LEASED**
- Suite 12 – 437 SF. **AVAILABLE**

MARCUS DUARTE

CA RELIC. #01972531 • Agent

mduarte@cvcbrokers.com •

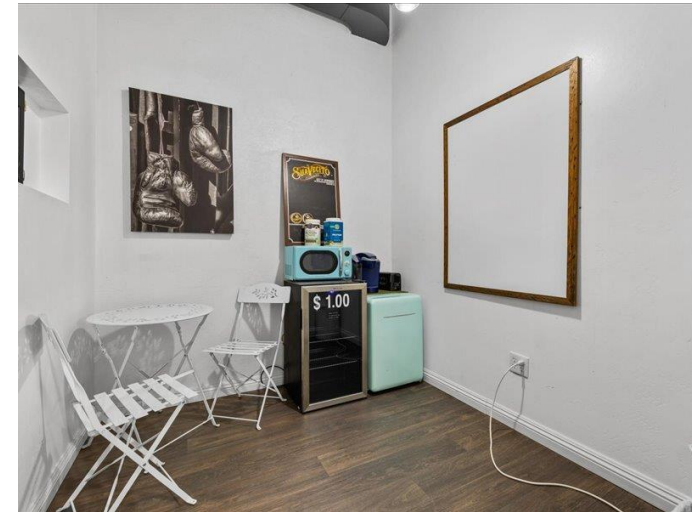
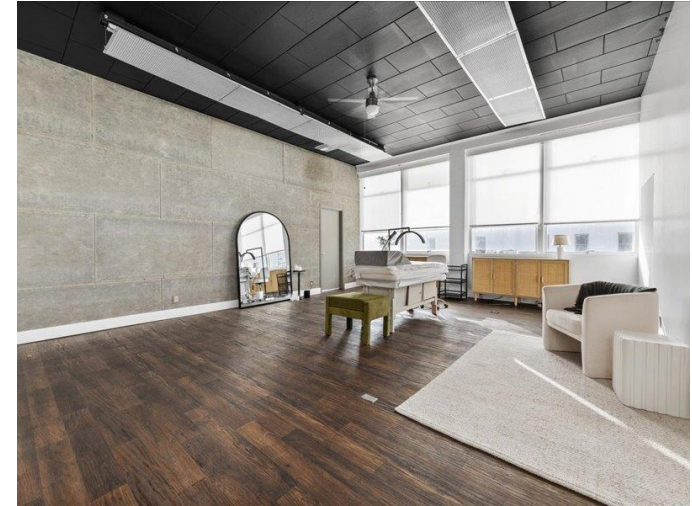
661.404.4090 Office 930 Truxtun Ave., Suite
101, Bakersfield, CA 93301

The information contained herein may have been obtained from sources other than CVCB. We have not verified such information and make no guarantees, warranties, or representations about such information. It is your responsibility to independently confirm its accuracy and completeness prior to purchasing/leasing the property.

FOR LEASE

1612 20th Street.

Property Photos



MARCUS DUARTE

CA RELIC. #01972531 • Agent

mduarte@cvcbrokers.com • 661.404.4090

Office 930 Truxtun Ave., Suite 101, Bakersfield,
CA 93301

The information contained herein may have been obtained from sources other than CVCB. We have not verified such information and make no guarantees, warranties, or representations about such information. It is your responsibility to independently confirm its accuracy and completeness prior to purchasing/leasing the property

FOR LEASE

1612 20th Street.

Aerial Map



MARCUS DUARTE

CA RELIC. #01972531 • Agent

mduarte@cvcbrokers.com • 661.404.4090 Office 930 Truxtun

Ave., Suite 101, Bakersfield, CA 93301

The information contained herein may have been obtained from sources other than CVCB. We have not verified such information and make no guarantees, warranties, or representations about such information. It is your responsibility to independently confirm its accuracy and completeness prior to purchasing/leasing the property