



CENTRAL  
VALLEY  
COMMERCIAL  
BROKERS, INC

# FOR LEASE

*1612 20<sup>th</sup> Street.*

APN: 005-451-05-00-8



## Property Details

- Centrally located
- CB Zoned
- Modified gross leases
- 10,000 sq. ft. total
- 6-month leases available
- Negotiable leasing rate
- 1610 20<sup>th</sup> – 730 SF. **LEASED**
- Suite 1 – 144 SF.
- Suite 8 – 572 SF.
- Suite 5 – 467 SF. **LEASED**
- Suite 12 – 437 SF. **LEASED**

### MARCUS DUARTE

CA RELIC. #01972531 • Agent

[mduarte@cvcbrokers.com](mailto:mduarte@cvcbrokers.com) •

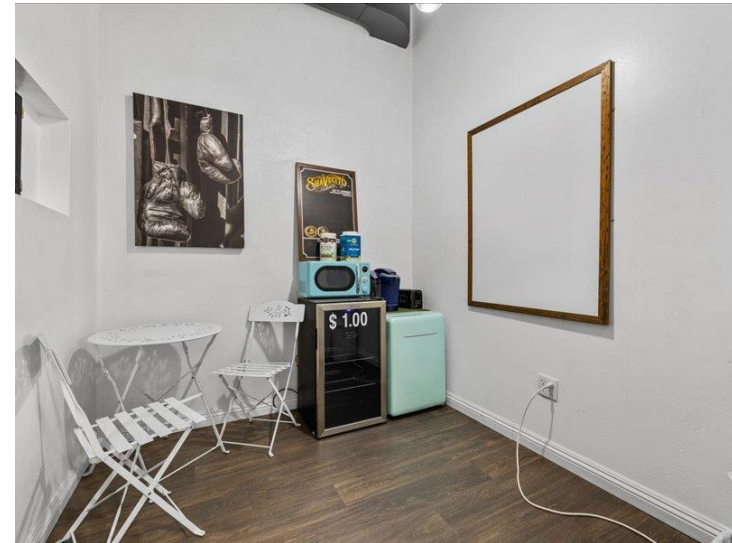
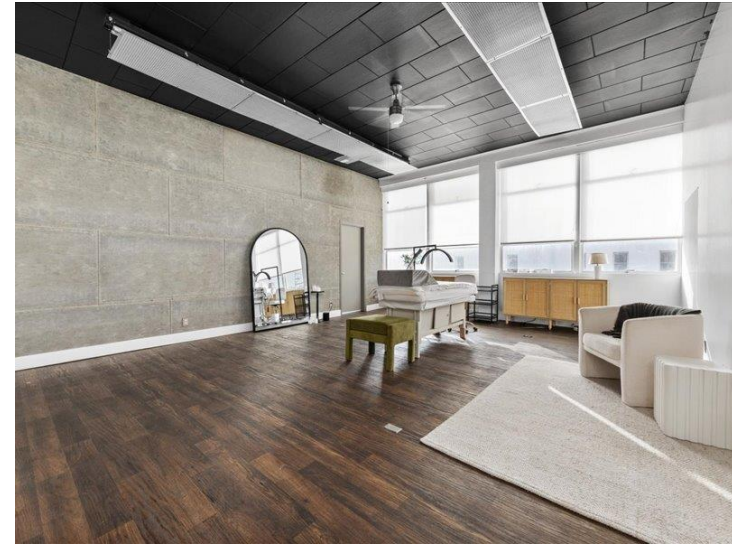
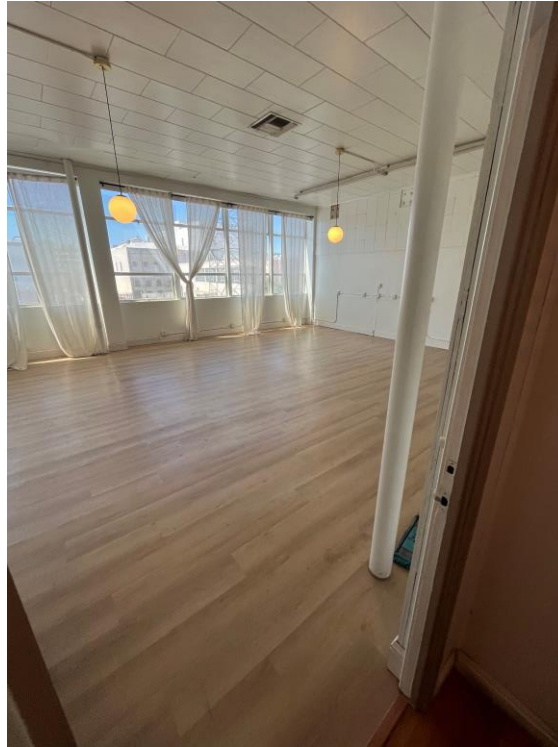
661.404.4090 Office 930 Truxtun Ave., Suite  
101, Bakersfield, CA 93301

The information contained herein may have been obtained from sources other than CVCB. We have not verified such information and make no guarantees, warranties, or representations about such information. It is your responsibility to independently confirm its accuracy and completeness prior to purchasing/leasing the property.

# FOR LEASE

*1612 20<sup>th</sup> Street.*

## Property Photos



# FOR LEASE

1612 20<sup>th</sup> Street.

## Aerial Map



### MARCUS DUARTE

CA RELIC. #01972531 • Agent

[mduarte@cvcbrokers.com](mailto:mduarte@cvcbrokers.com) • 661.404.4090 Office 930 Truxtun

Ave., Suite 101, Bakersfield, CA 93301

The information contained herein may have been obtained from sources other than CVCB. We have not verified such information and make no guarantees, warranties, or representations about such information. It is your responsibility to independently confirm its accuracy and completeness prior to purchasing/leasing the property