

# CVCB



CENTRAL  
VALLEY  
COMMERCIAL  
BROKERS, INC

# FOR SALE

## 301 Central Avenue, Shafter

**PRICE IMPROVEMENT!**

**\$795,000**



### PROPERTY DETAILS

- 7,500 SF total building
- Office/Retail
- Located on high traffic corner
- Central downtown location

HENRY E. MENDEZ, JR. • Broker/ Principal • [hmendez@cvcbrokers.com](mailto:hmendez@cvcbrokers.com) • CA RE #01127054  
CA Broker DRE #02084340 • 661.404.4090 Office • 930 Truxtun Ave., Suite 101  
Bakersfield, CA 93301

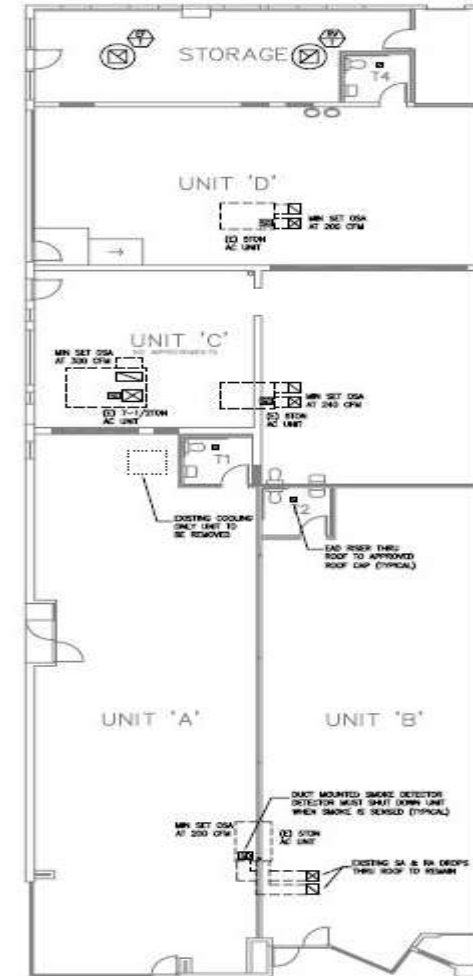


*The information contained herein may have been obtained from sources other than CVCB. We have not verified such information and make no guarantees, warranties, or representations about such information.*

*It is your responsibility to independently confirm its accuracy and completeness prior to purchasing/leasing the property.*

# FOR SALE – Office • Retail

301 Central Avenue, Shafter



HENRY E. MENDEZ, JR. • Broker/ Principal • [hmendez@cvcbrokers.com](mailto:hmendez@cvcbrokers.com) • CA RE #01127054  
CA Broker DRE #02084340 • 6614044090 Office • 930 Truxtun Ave., Suite 101  
Bakersfield, CA 93301

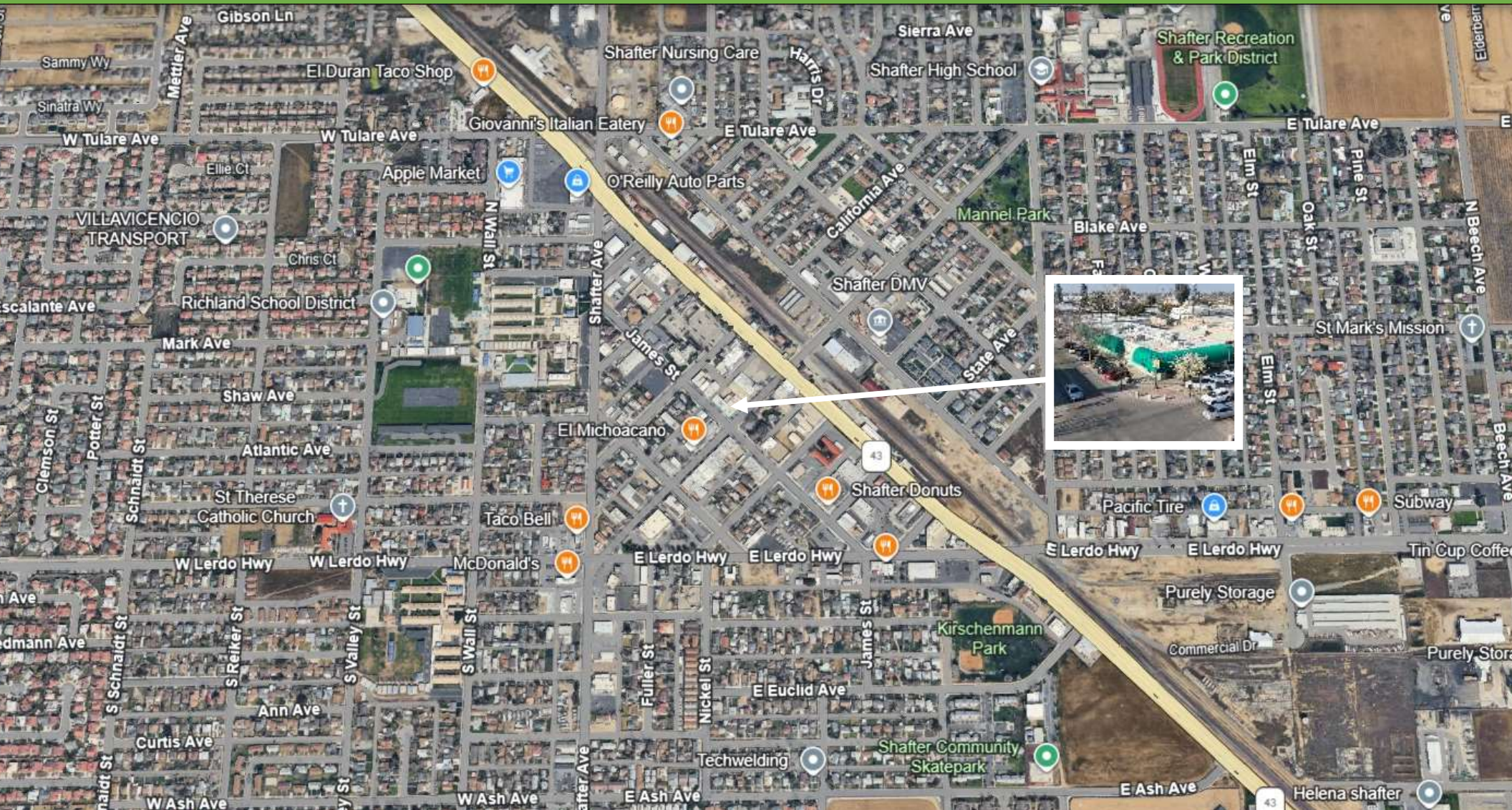


*The information contained herein may have been obtained from sources other than CVCB. We have not verified such information and make no guarantees, warranties, or representations about such information.*

*It is your responsibility to independently confirm its accuracy and completeness prior to purchasing/leasing the property.*

# FOR SALE - Retail - Office

## 301 Central Avenue, Shafter



HENRY E. MENDEZ, JR. • Broker/ Principal • [hmendez@cvcbrokers.com](mailto:hmendez@cvcbrokers.com) • CA RE #01127054  
CA Broker DRE #02084340 • 661.404.4090 Office • 930 Truxtun Ave., Suite 101  
Bakersfield, CA 93301



*The information contained herein may have been obtained from sources other than CVCB. We have not verified such information and make no guarantees, warranties, or representations about such information.*

*It is your responsibility to independently confirm its accuracy and completeness prior to purchasing/leasing the property.*