

CVCB



CENTRAL
VALLEY
COMMERCIAL
BROKERS, INC

FOR LEASE

712 N Chester Ave.

APN: 118-120-35-00-5



Property Details

- Two units
- 1,720 sq. ft. each
- \$1.50 sq. ft. Modified Gross
- Professional Office
- High Visibility
- Ample Parking
- Conference Room
- Private Offices
- Reception Area
- Private bathrooms

HENRY E. MENDEZ, JR.

CA RE #01127054 CA DRE #02084340 •Broker/ Principal
hmendez@cvcbrokers.com•661.404.4090 Office
930 Truxtun Ave., Suite 101, Bakersfield, CA 93301

The information contained herein may have been obtained from sources other than CVCB. We have not verified such information and make no guarantees, warranties, or representations about such information. It is your responsibility to independently confirm its accuracy and completeness prior to purchasing/leasing the property.

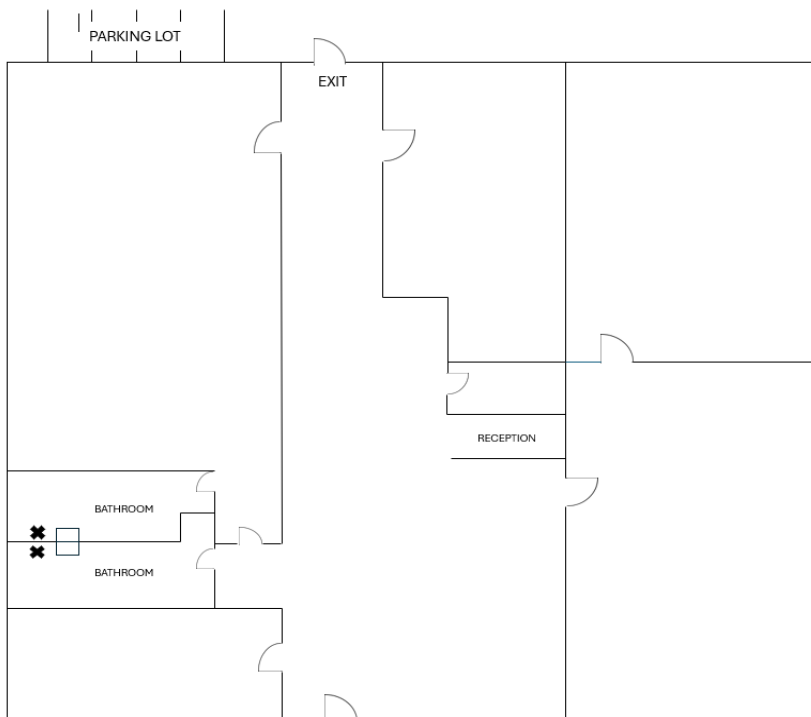


FOR LEASE

712 N Chester Ave.

FLOOR PLAN

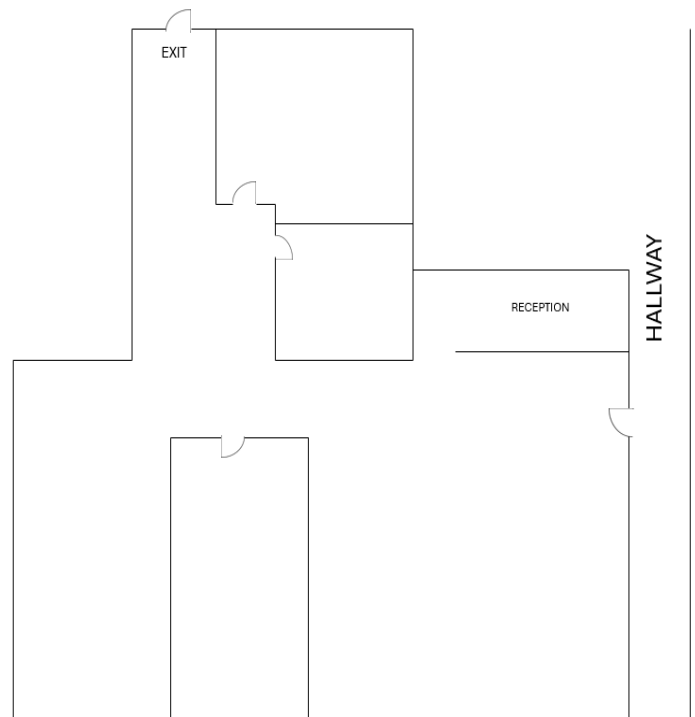
712 A



1720 Sq. ft.

CHESTER

712 B



1720 Sq. ft.

CHESTER

HENRY E. MENDEZ, JR.

CA RE #01127054 CA DRE #02084340 • Broker/ Principal

hmendez@cvcbrokers.com • 661.404.4090 Office

930 Truxtun Ave., Suite 101, Bakersfield, CA 93301

The information contained herein may have been obtained from sources other than CVCB. We have not verified such information and make no guarantees, warranties, or representations about such information. It is your responsibility to independently confirm its accuracy and completeness prior to purchasing/leasing the property.



FOR LEASE

712 N Chester Ave.

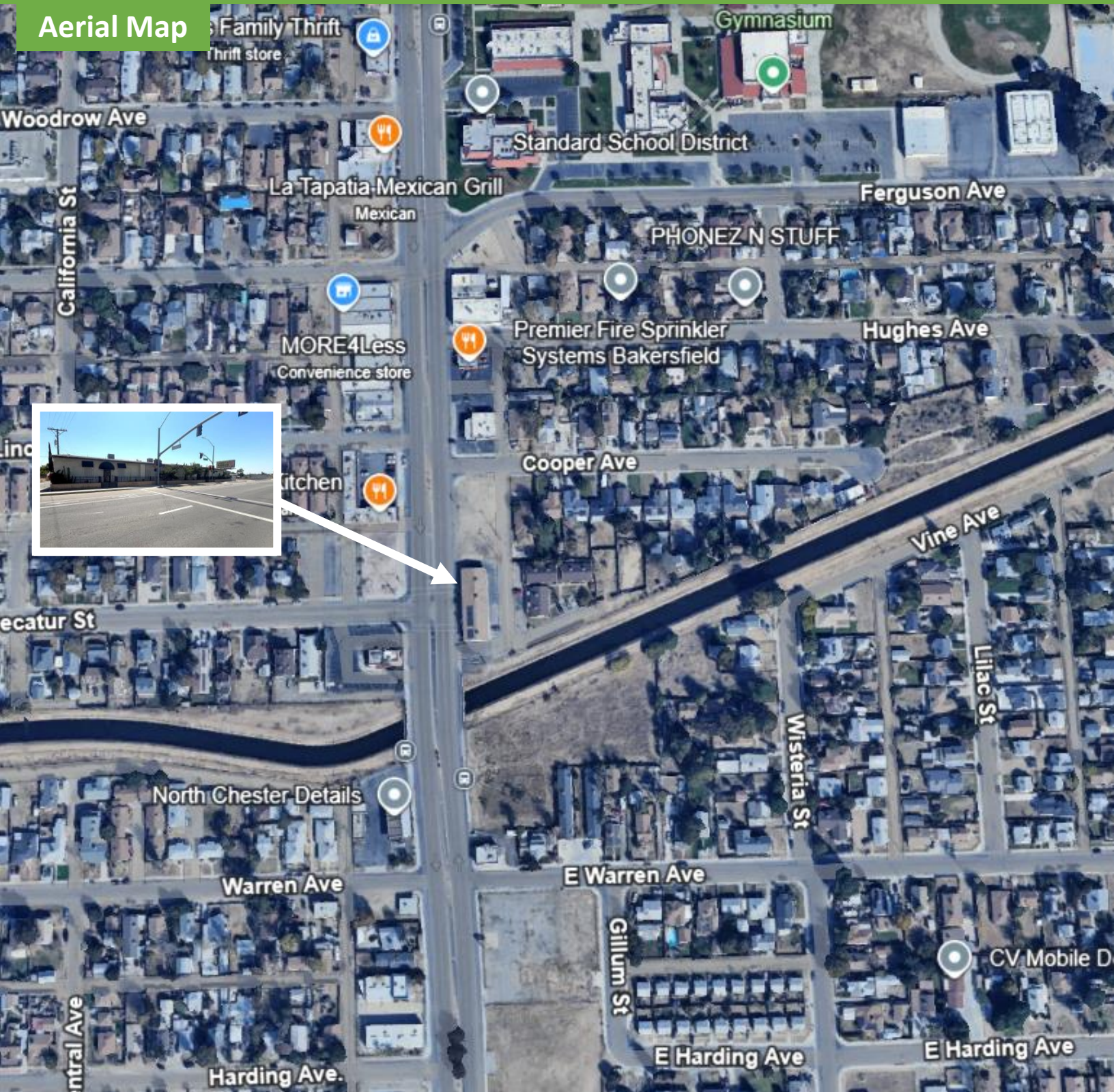
Property Photos



FOR LEASE

712 N Chester Ave.

Aerial Map



HENRY E. MENDEZ, JR.

CA RE #01127054 CA DRE #02084340 • Broker/ Principal

hmendez@cvcbrokers.com • 661.404.4090 Office

930 Truxtun Ave., Suite 101, Bakersfield, CA 93301

The information contained herein may have been obtained from sources other than CVCB. We have not verified such information and make no guarantees, warranties, or representations about such information. It is your responsibility to independently confirm its accuracy and completeness prior to purchasing/leasing the property.

