



930 Truxtun Ave.

Executive Suites Available for Lease

Receptionist Services
Available

1 Suite Available!



HENRY E. MENDEZ, JR.

CA RE #01127054 CA DRE #02084340 • Broker/ Principal
hmendez@cvcbrokers.com • 661.404.4090 Office
930 Truxtun Ave., Suite 101, Bakersfield, CA 93301

The information contained here may have been obtained from sources other than Central Valley Commercial Brokers. We have not verified such information and make no guarantees, warranties, or representations about such information. It is your responsibility to independently confirm its accuracy and completeness when purchasing/leasing the property.

FOR LEASE – Executive Suites

PROPERTY INFORMATION

930 Truxtun Avenue is a two-story, free standing multi-tenant professional office building located on the northeast corner of Truxtun Avenue and 'O' Street in the Downtown Bakersfield Business Corridor. The building is walking distance to city and county administrative offices, courts, assessor's office, hall of records, Bakersfield City Police Department, Rabobank Convention Center, Amtrak Station, numerous law offices, restaurants, and businesses. Ideal location for legal, insurance and professional offices.

AVAILABILITY

Multi-Tenant/ Executive Office Suites
Building Size 9,000 SQFT
Suite 108 120 SF.- \$750/Month
Suite 111 120 SF – Day office available a couple of times a month.

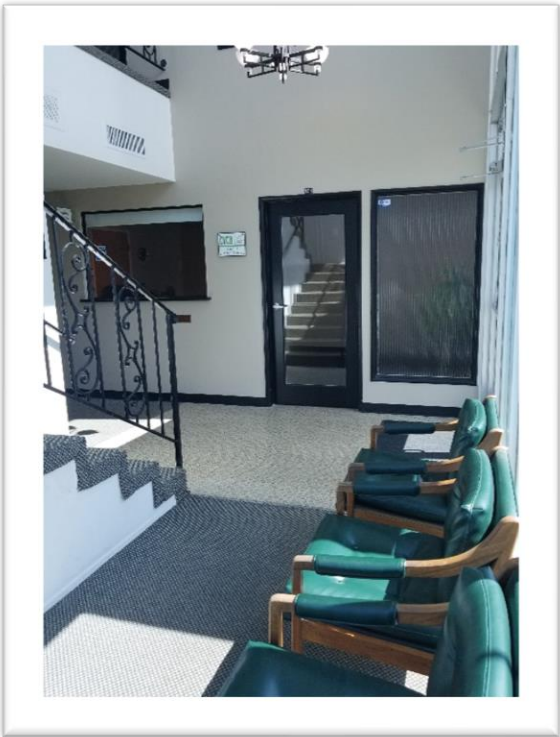
APN 006-222-07 & 08

LEASE TYPE

FULL-SERVICE GROSS

HIGHLIGHTS

12 Shared Parking Stalls
2 To 5-Year Terms
Ample Street Parking
Full-Service Gross Leases
Onsite Building Manager
Receptionist Services Available Shared
Conference Room Available Shared



BUILDING ROSTER

FIRST FLOOR

SUITE	TENANT
101	Central Valley Commercial Brokers, Inc.
102-103	Home Watch Caregivers
107	Alex Gutierrez, LMFT
108	VACANT
109	Thomas Brill a Professional Law Corporation
110	Law Offices of Mickey Fine
111	DAY OFFICE
112	CONFERENCE ROOM

SECOND FLOOR

SUITE	TENANT
201	Kern Tutoring
202	Kern Tutoring
203-204	D. Max Gardner Attorney at Law
205	Stephanie Santos, LCSW
206	C & L Services
207	In The Waiting Doula Services
207	Three Moons Doula Collective
208	V's Lavish Skin
209	Ryan T. Fallgatter Lawyer
210	Car Accident Attorney, Daniel Kim
211	Coach Nursing, Inc.

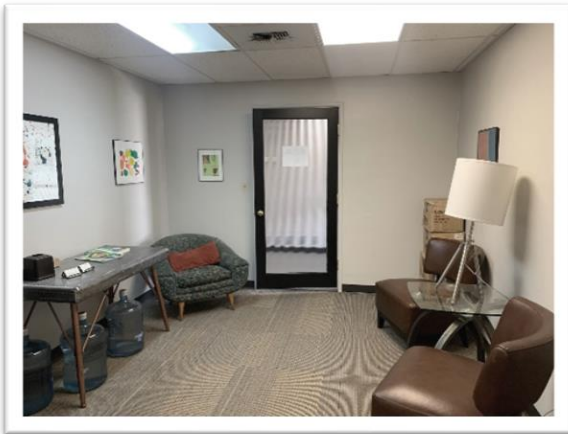


HENRY E. MENDEZ, JR.
CA RE #01127054 CA DRE #02084340 • Broker/ Principal
hmendez@cvcbrokers.com • 661.404.4090 Office
930 Truxtun Ave., Suite 101, Bakersfield, CA 93301

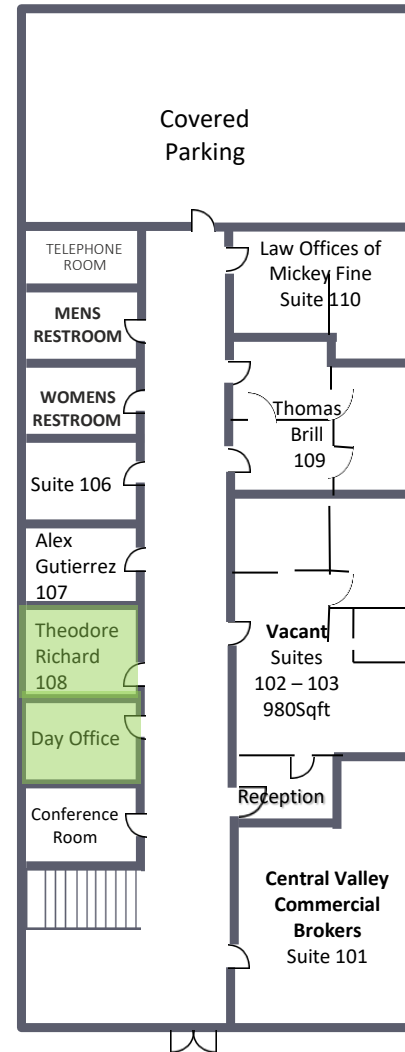
The information contained here may have been obtained from sources other than Central Valley Commercial Brokers. We have not verified such information and make no guarantees, warranties, or representations about such information. It is your responsibility to independently confirm its accuracy and completeness when purchasing/leasing the property.

FOR LEASE – Executive Suites

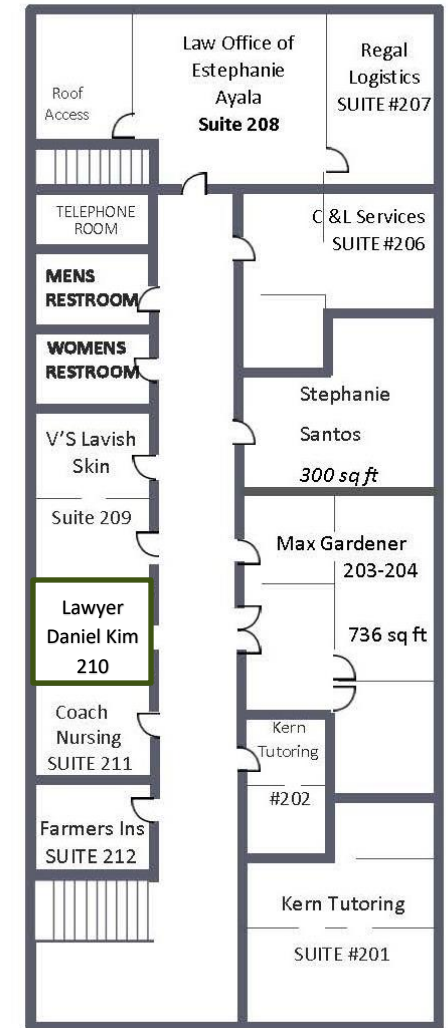
930 Truxtun Avenue



FIRST FLOOR



SECOND FLOOR



HENRY E. MENDEZ, JR.

CA RE #01127054 CA DRE #02084340 • Broker/ Principal
hmendez@cvcbrokers.com • 661.404.4090 Office
930 Truxtun Ave., Suite 101, Bakersfield, CA 93301

The information contained here may have been obtained from sources other than Central Valley Commercial Brokers. We have not verified such information and make no guarantees, warranties, or representations about such information. It is your responsibility to independently confirm its accuracy and completeness when purchasing/leasing the property.

FOR LEASE – Executive Suites

930 Truxtun Avenue



HENRY E. MENDEZ, JR.

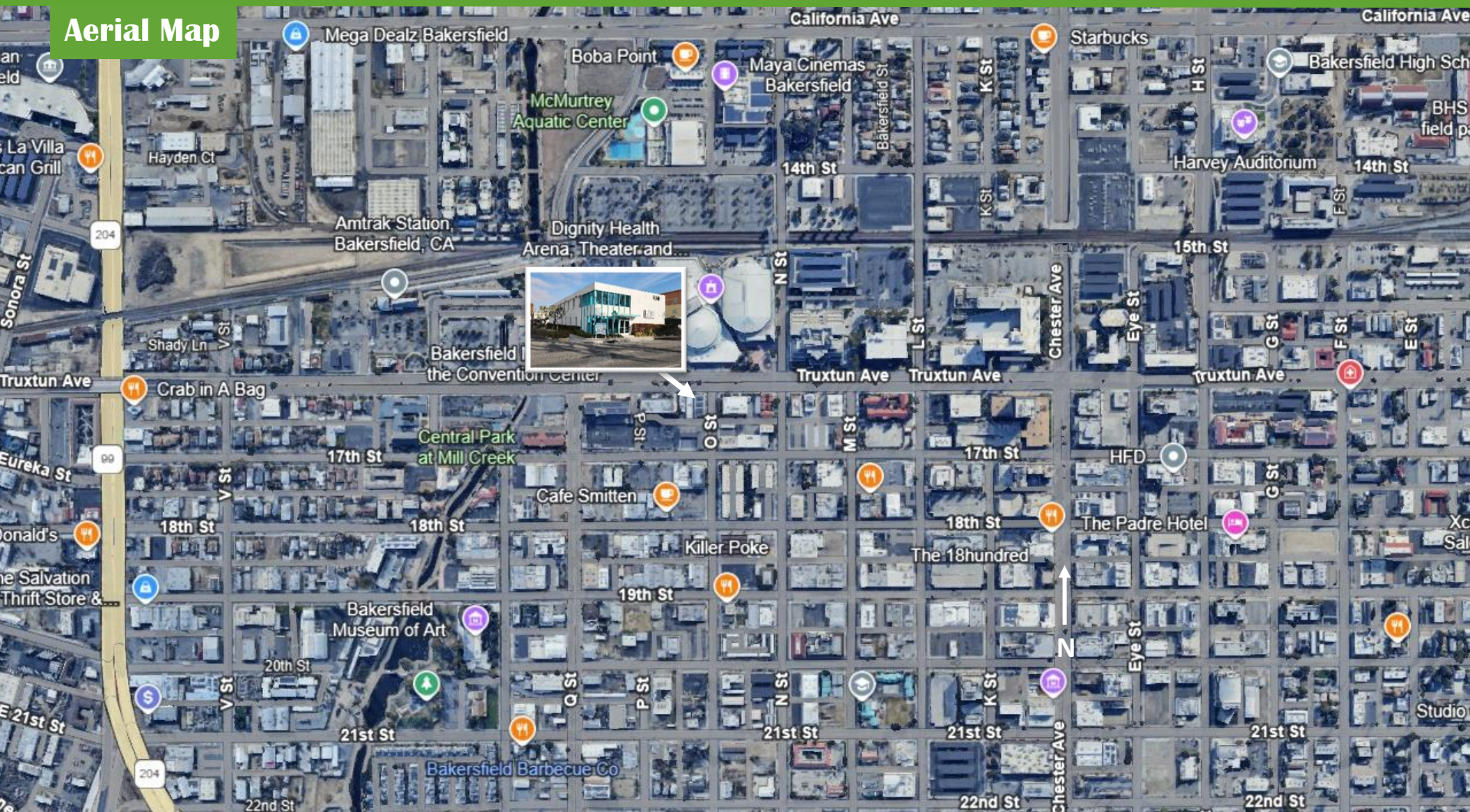
CA RE #01127054 CA DRE #02084340 • Broker/ Principal
hmendez@cvcbrokers.com • 661.404.4090 Office
930 Truxtun Ave., Suite 101, Bakersfield, CA 93301

The information contained here may have been obtained from sources other than Central Valley Commercial Brokers. We have not verified such information and make no guarantees, warranties, or representations about such information. It is your responsibility to independently confirm its accuracy and completeness when purchasing/leasing the property.

FOR LEASE – Executive Suites

930 Truxtun Avenue

Aerial Map



HENRY E. MENDEZ, JR.

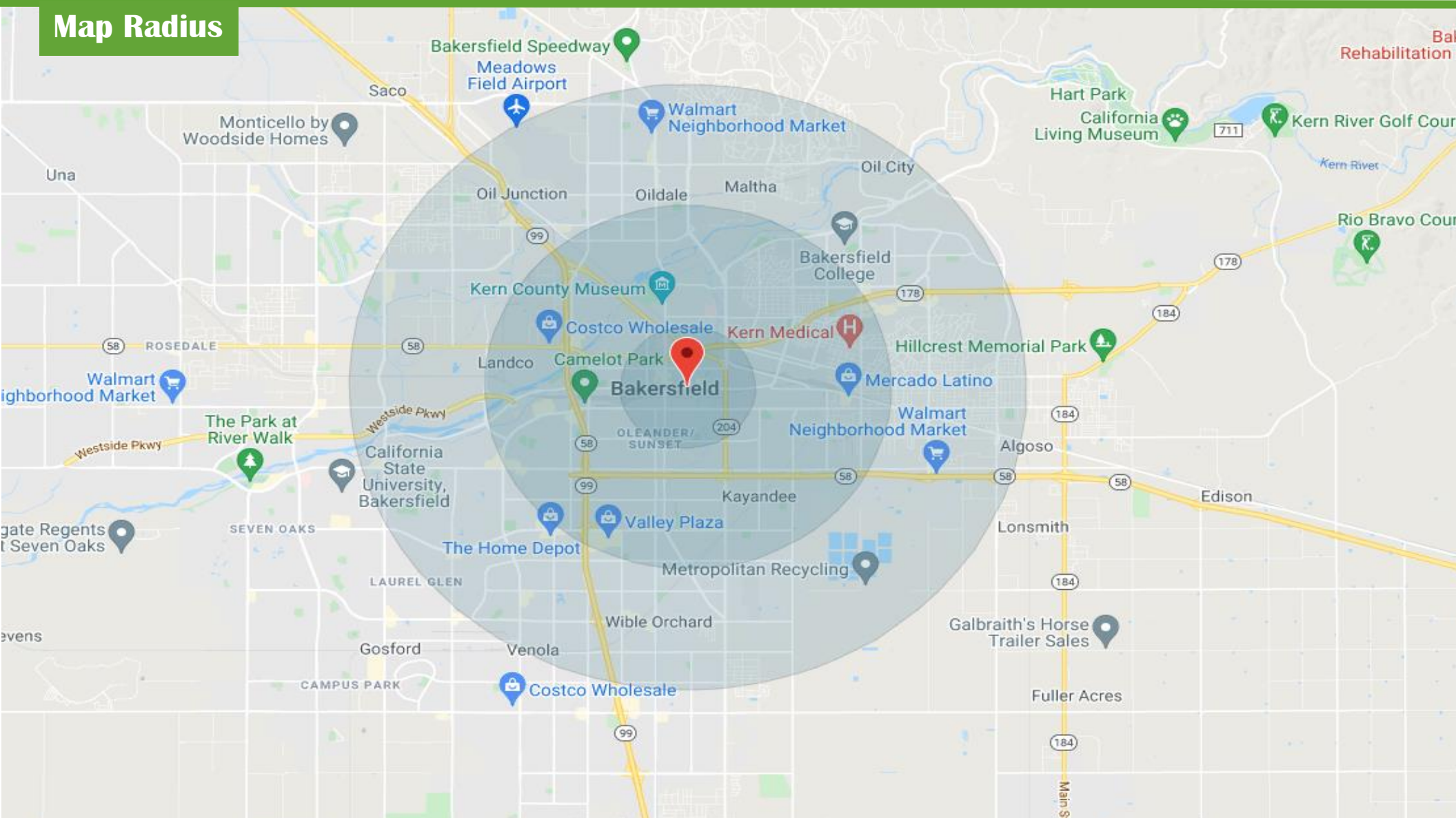
CA RE #01127054 CA DRE #02084340 • Broker/ Principal
hmendez@cvcbrokers.com • 661.404.4090 Office
930 Truxtun Ave., Suite 101, Bakersfield, CA 93301

The information contained here may have been obtained from sources other than Central Valley Commercial Brokers. We have not verified such information and make no guarantees, warranties, or representations about such information. It is your responsibility to independently confirm its accuracy and completeness when purchasing/leasing the property.

FOR LEASE – Executive Suites

930 Truxtun Avenue

Map Radius



HENRY E. MENDEZ, JR.

CA RE #01127054 CA DRE #02084340 • Broker/ Principal
hmendez@cvcbrokers.com • 661.404.4090 Office
930 Truxtun Ave., Suite 101, Bakersfield, CA 93301

The information contained here may have been obtained from sources other than Central Valley Commercial Brokers. We have not verified such information and make no guarantees, warranties, or representations about such information. It is your responsibility to independently confirm its accuracy and completeness when purchasing/leasing the property.