



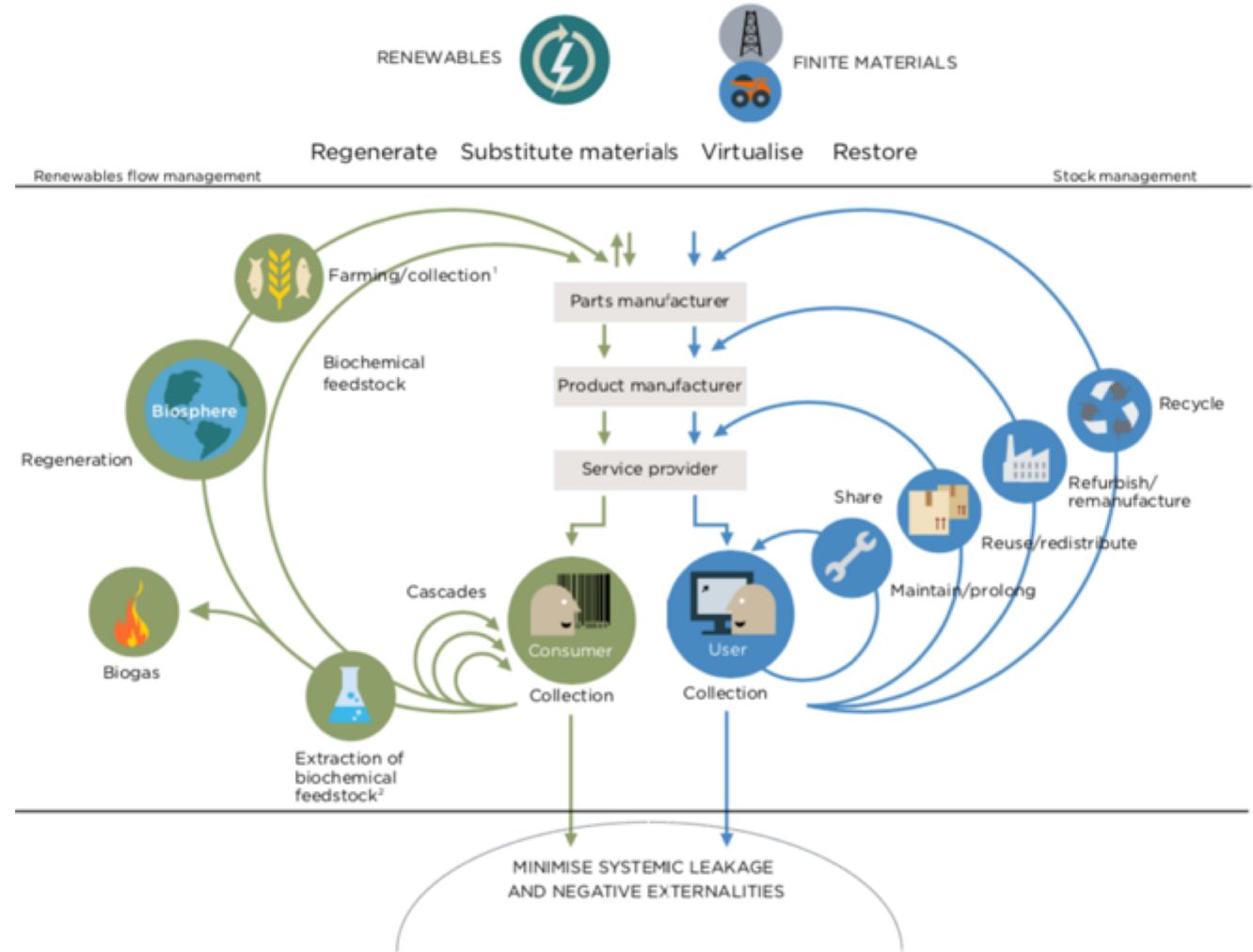
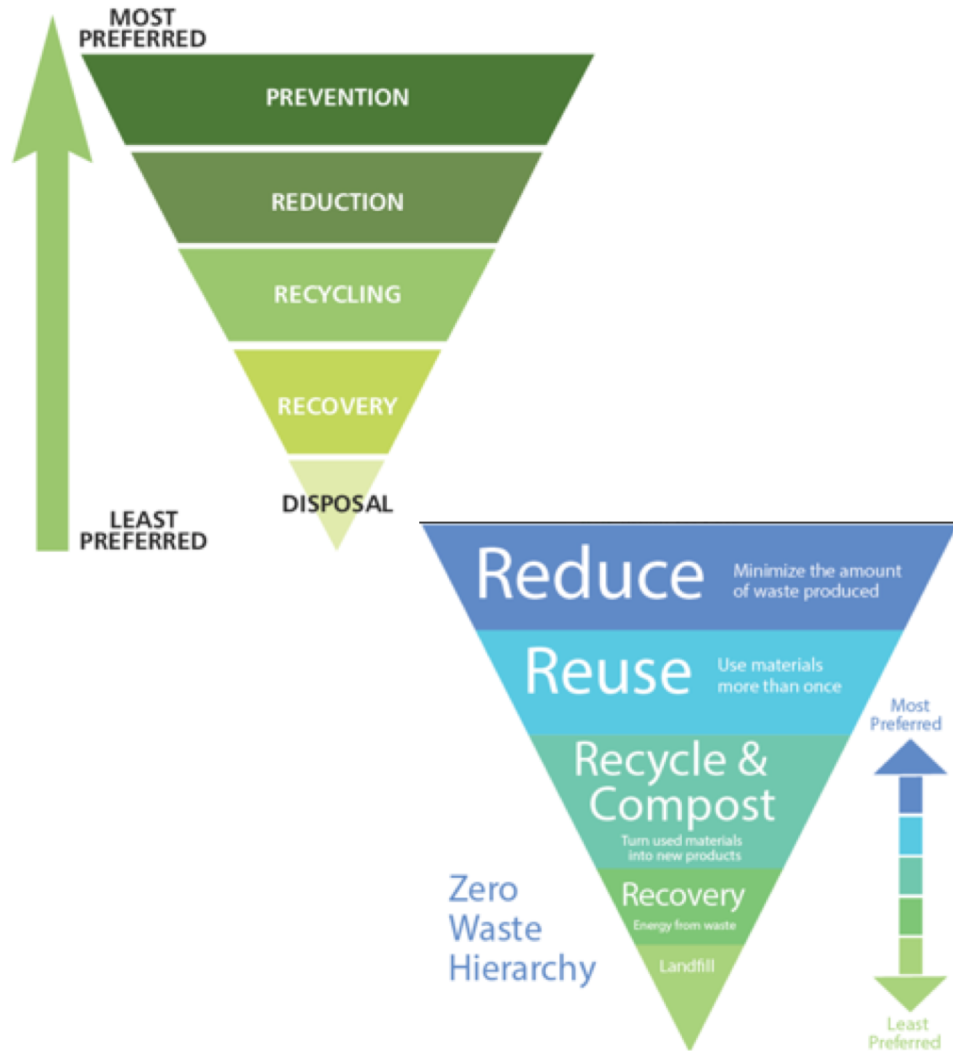
LINEAR TO CIRCULAR

CLIMATE ACTION AND CIRCULAR ECONOMY

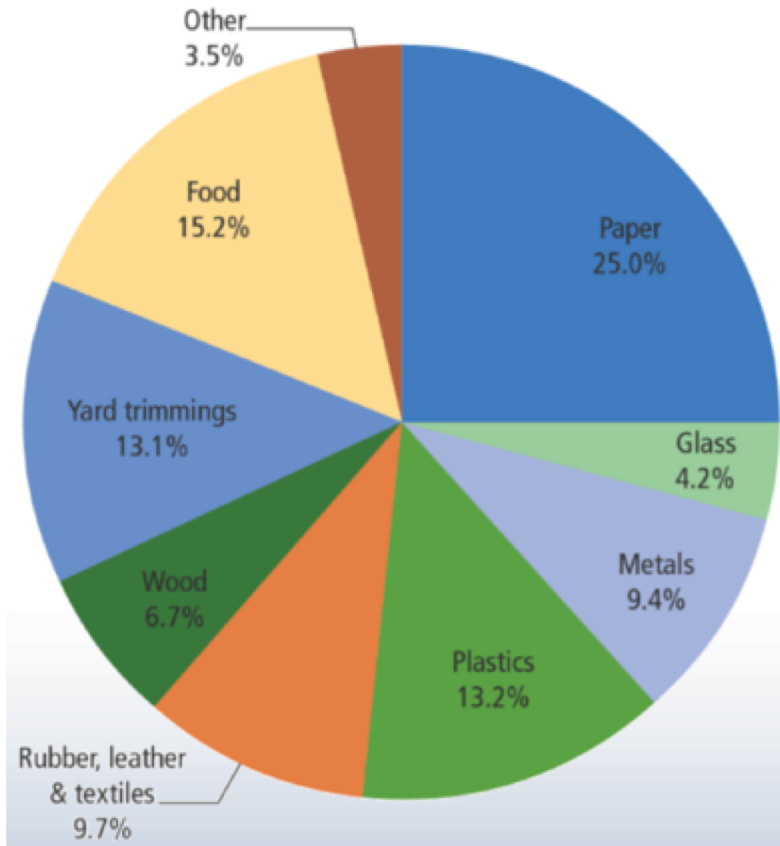
Chris Godlove - Webinar presentation to the US Climate Alliance (USCA)

April 2, 2020

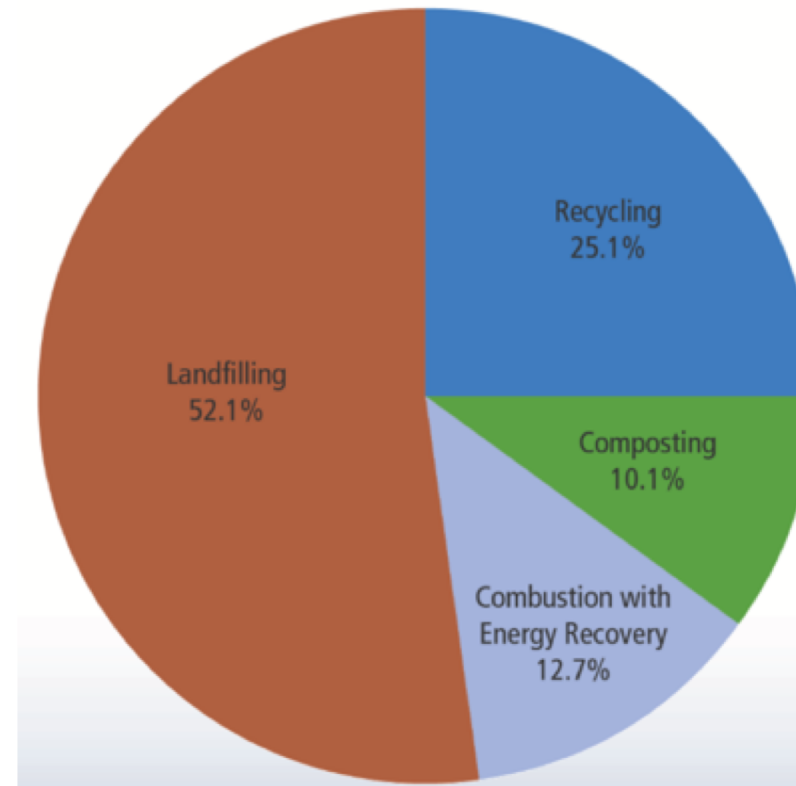
AN EVOLUTION IN APPROACH AND PRESENTATION



STATUS OF US WASTE MANAGEMENT, 2017

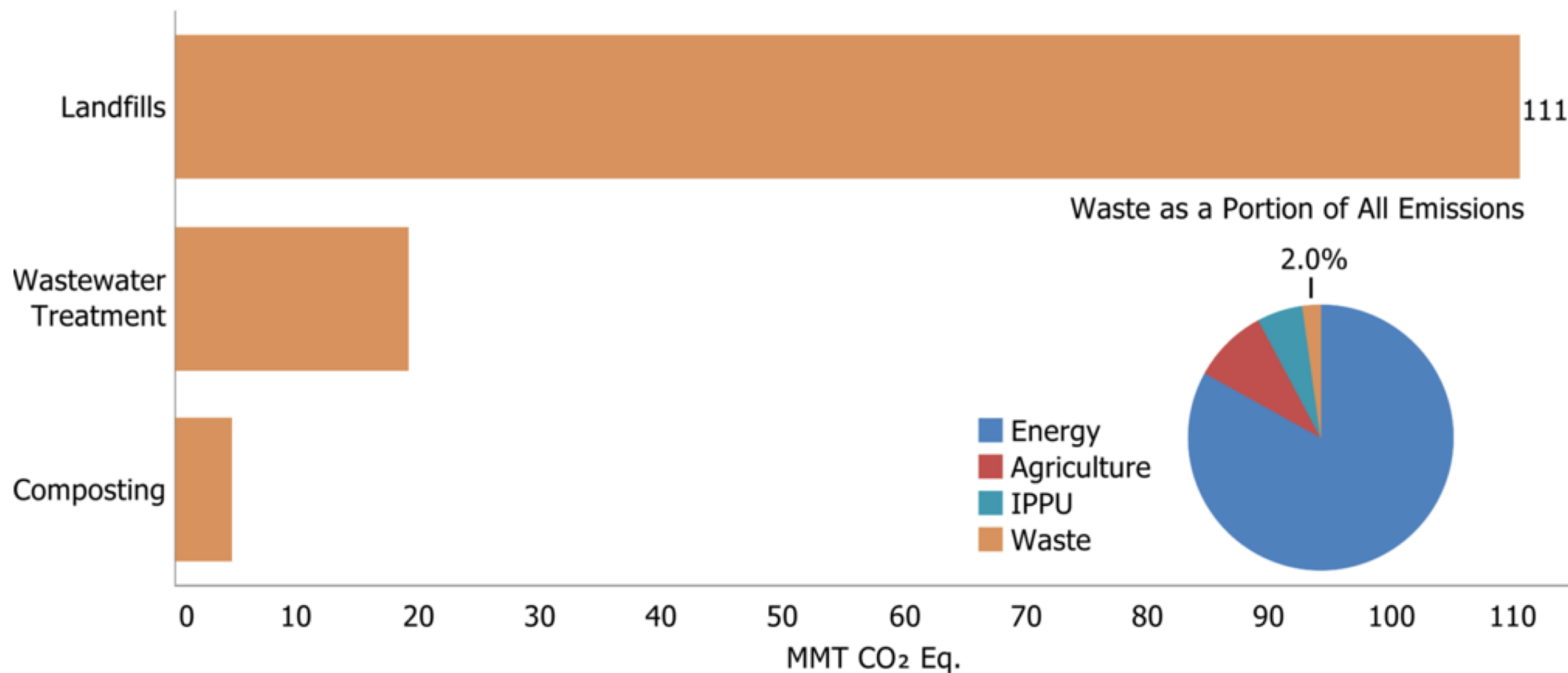


MSW generation by material

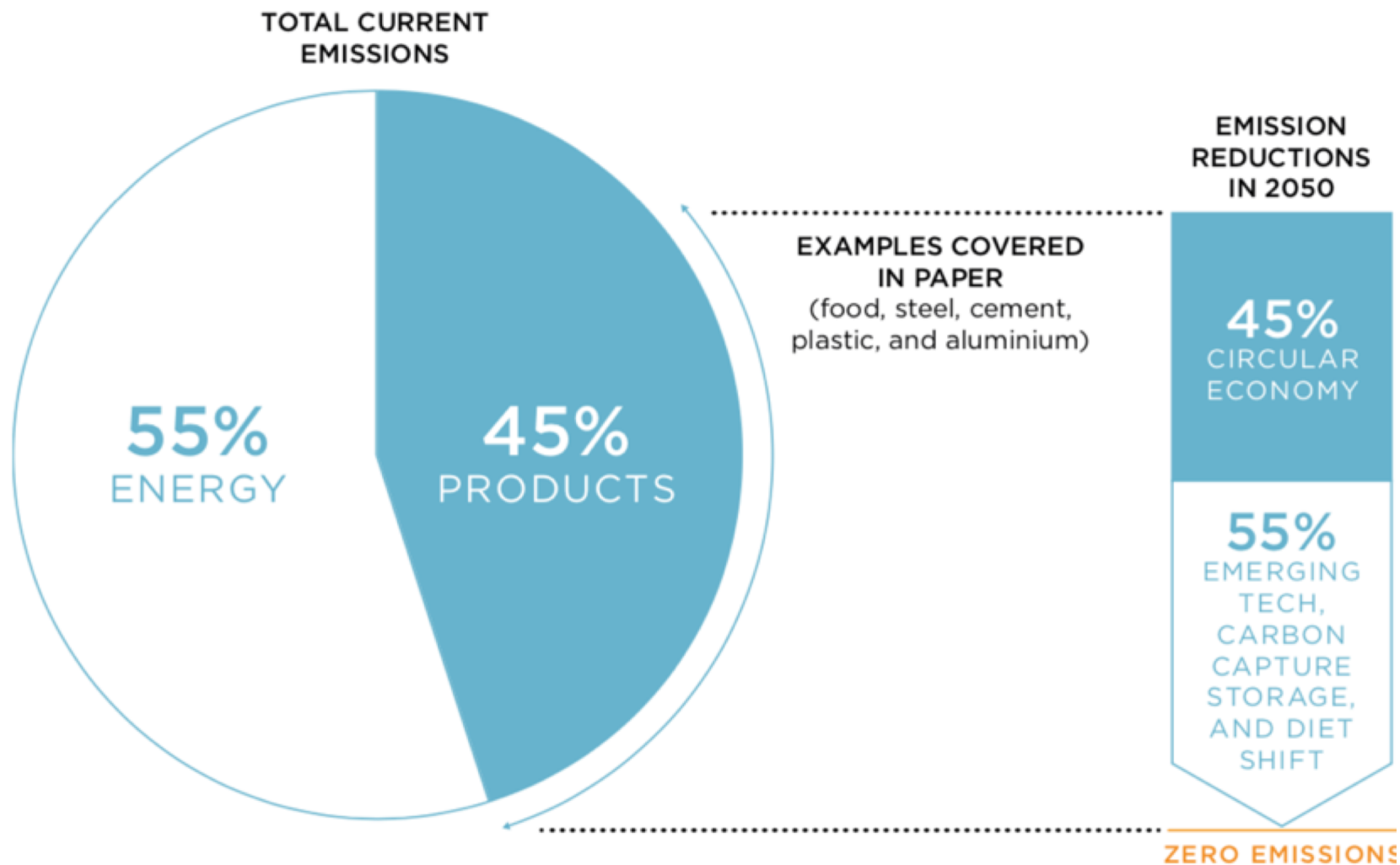


Management of MSW

UNITED STATES' EMISSIONS FROM WASTE, 2018



TACKLING CLIMATE THROUGH CIRCULAR ECONOMY



FINANCIAL AND NON-FINANCIAL BARRIERS



Technology – *recycling, product design*

Organization – *change is difficult and complex*

Regulatory – *lack of supporting regulations*

Awareness – *lack of consumer knowledge*

Investment – up-front costs, training and resources

Policy – sending signals on pricing and taxation

SECTOR BY SECTOR APPROACHES

HOTELS (FOOD)



TEXTILES



BUILDINGS

REusable building materials

Roof tiles
Timber beams
Brick work
Soil



CDW Construction & demolition waste

Waste wood
Bricks & plaster
Plastics
Concrete

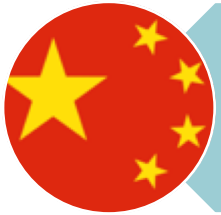
AGRICULTURE (FOOD)



CIRCULAR ECONOMY POLICIES IN ACTION



European Union: [Circular Economy Action Plan \(2020\)](#)



China: [Circular economy promotion law \(2009\)](#)



Victoria, Australia: [Recycling Victoria: A new economy \(2020\)](#)



Toronto, Canada: [CE Procurement Implementation Plan & Framework \(2018\)](#)

VICTORIA, AUSTRALIA

Transforming recycling in Victoria

A new, 10-year plan that will cut pollution and boost economic growth and jobs.



By 2030, every household will get a bin or access to services for:

Current household recycling	Future household recycling
Commingled recycling (paper, cardboard, plastics, metals, and for most, glass)	Commingled recycling (paper, cardboard, plastics, metals)
General waste	General waste
Garden organics for most councils, and food or food organics and garden organics for some	Food organics and garden organics
	Glass
	Container Deposit Scheme (Glass, Aluminium & PET plastic beverage containers)

PHOENIX, ARIZONA



City of Phoenix



GETTING STARTED...



- ✓ Organic waste bans
- ✓ Public procurement
- ✓ Extended producer responsibility (EPR)
- ✓ Sectoral approaches
- ✓ Disposal taxation
- ✓ Single use material bans
- ✓ Bottle return deposit
- ✓ Repair / lending initiatives
- ✓ Energy recovery
- ✓ Innovation

THANK YOU!

CHRIS GODLOVE
PRINCIPAL

cgodlove@thinkcities.eu

@chrisforclimate | twitter

www.thinkcities.eu

TH!NKCITIES
CONSULTING