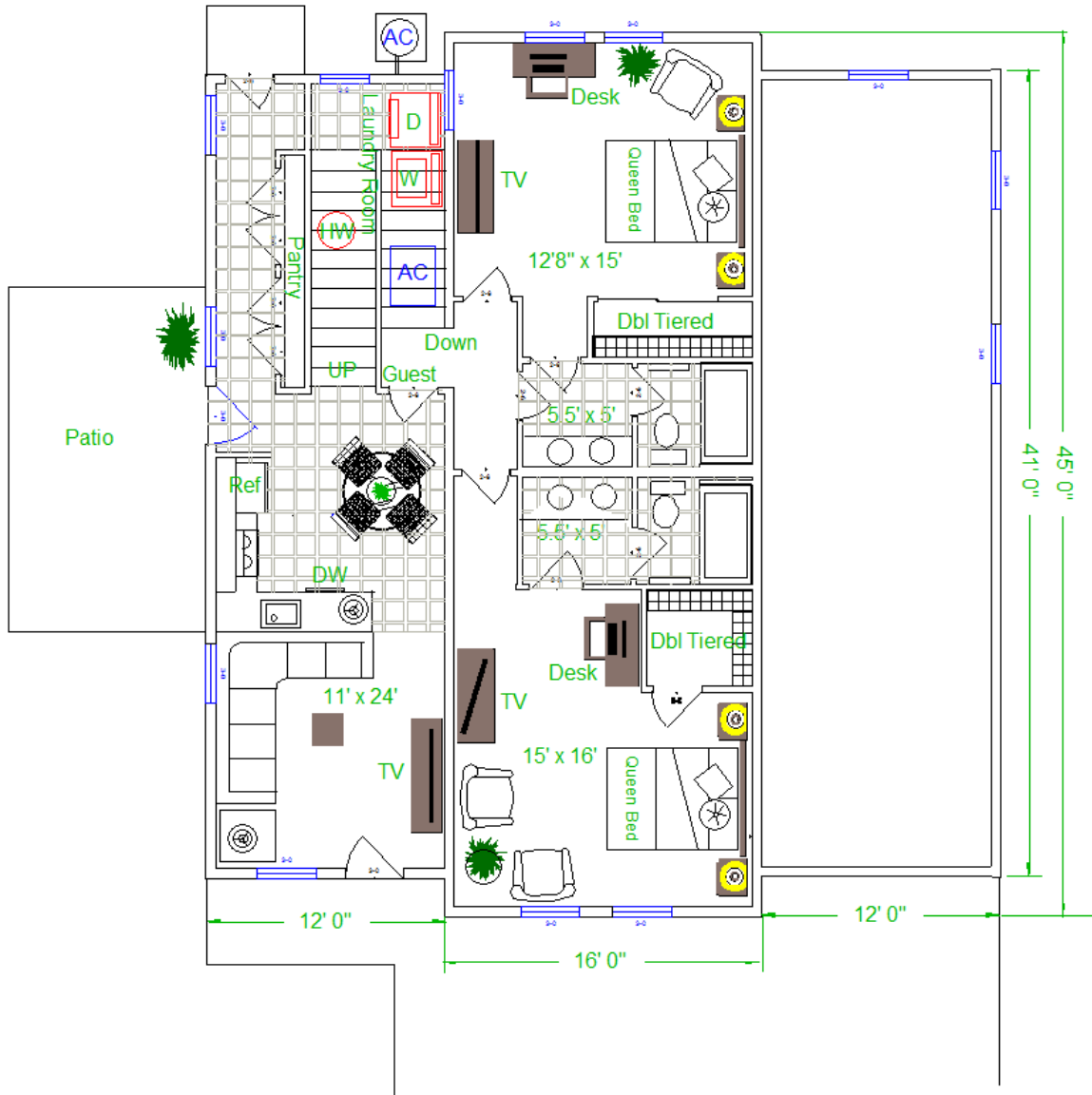


Add a little roof jewelry and the model stands out among RV port homes.



Floor plan is based on the foregoing models; however, the RV bridge has been shortened from 20' in width to 16' (the pricing below is for a 20' wide RV bridge). The way in which the staircase is designed allows room for a washer and dryer, hot water heater, and AC blower.

The pricing for the package on our website is as follows:

\$83,900.00 Package price for the 20'x45' open bridge and two each 12'x41' wings. This includes the shed gable, choice of either trim package as shown, and choice of either Hardiplank lap siding or Hardy board and batten siding. Pricing does not include caulking, priming, painting, cupola, weathervane, pulley, electrical, plumbing, insulation, drywall, cabinetry, carpeting, tile, plumbing, etc. This is a shell only.

Note that the package price includes a 6" monolithic slab in the open bridge and 4" monolithic slabs in the 12' wings. There will be an additional cost if the site needs clearing, is more than 6" off level, and is not accessible by a concrete truck.

<-4,195.00> **Advantage Sale:** You saved 5% off the package price.

<-500.00> **Big Bonus Sale:** You saved

\$79,205.00 Total before tax.

3,168.00 Tax on cost of material only. There is no tax on labor.

\$82,382.00 TOTAL or about \$29.95 SF

[CHECK OUT THIS REVIEW AT DO IT YOURSELF RV'S WEBSITE:](#)