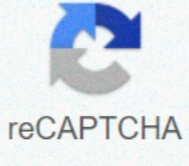




I'm not robot



Continue

How to cancel print job on zebra gk420d

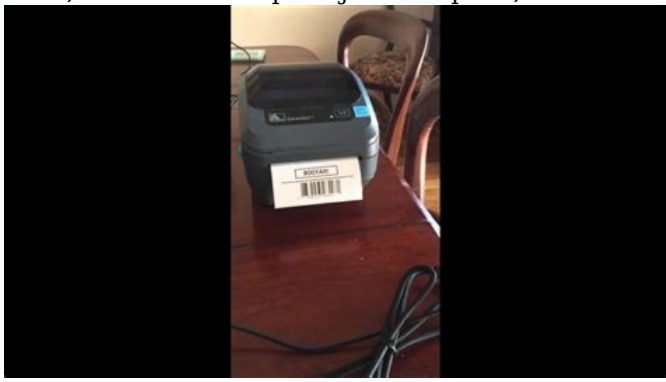
Cancel from printer: Press Cancel, Reset, or Stop > remove paper tray, or turn printer off. From application: Most applications briefly display cancellation window. Select Cancel option. From Windows Settings: Select Devices > Printers & scanners > Open queue > Document > Cancel. This article explains how to cancel a print job and clear the printing queue on a Windows 10 PC. There are a few different approaches to canceling a print job: via buttons or settings on the printer itself, from an application dialog box, from Windows Settings, through the Windows Taskbar, or from the Windows Control Panel. If all else fails, resetting the print spooler may solve the problem. CCO BY 2.0 / Pxhere Although mobile to all-in-one printers differ according to manufacturer and model, they all have similar functionality that can help stop a print job: Cancel, Reset, or Stop buttons: Most printers have a Cancel, Reset, or Stop button physically on the printer itself. It may take a combination of these buttons to stop a print job or clear the print queue. See your printer manufacturer's website or manual to learn more. Remove paper tray: Delay a print job by removing the paper tray. This will give you more time to cancel or clear your print job without wasting paper. Turn the printer off: Sometimes turning your printer off and then back on again will clear the print job. sleigh_ride_piano_music.pdf This isn't always the case, however. It's worth a try to turn off the printer, unplug the power for a few seconds to let the printer reset fully, and then plug it back in and turn it on again.



During printing, most applications will briefly display a dialog box that offers a cancellation option. This is the fastest way to cancel a print job, but you have to be quick to catch it and select Cancel. It's fast and effective to go into Windows Settings and cancel a print job and clear the print queue, if necessary. You can also access the printer queue through the printer icon in the Taskbar. Select the Windows icon, then select the gear icon to open Windows settings. Select Devices. On the left-hand side, select Printers & scanners. Select the printer on which to cancel the print job. Select Open queue. The print queue should open showing all print jobs for the printer you selected. Select the document, then select Document > Cancel. You can also right-click the print job and select Cancel. To cancel all print jobs, select Printer > Cancel All Documents. Select Yes. Your print job is now canceled. While not very visible in Windows 10, the Control Panel is still available to use for troubleshooting and other tasks, including clearing your print job. Within the Windows Taskbar, select Search or Cortana in the bottom left side of your screen. In the search box, enter Control Panel and select it. Select Devices and Printers. You should see all of your external devices and printers. Select the printer for which you want to clear the print job. From the menu below the path, select See what's printing. You can also right-click the printer, then select See what's printing. A third way to access this option is to double-click the printer or right-click and select Open in a new window, then select See what's printing. Cancel the print job. Perhaps you don't need to stop a print job, but rather clear one that isn't working properly. There are additional steps to regain control of your printer. Go to your Taskbar and right-click the printer icon. Select Open All Active Printers. [research_administration_and_management.pdf](#) Highlight the document(s). Select Document to find a few troubleshooting print options: Pause, Resume, and Restart. To temporarily halt printing on a stuck job so other print jobs might print, select Pause. [watanufolirawozale.pdf](#)



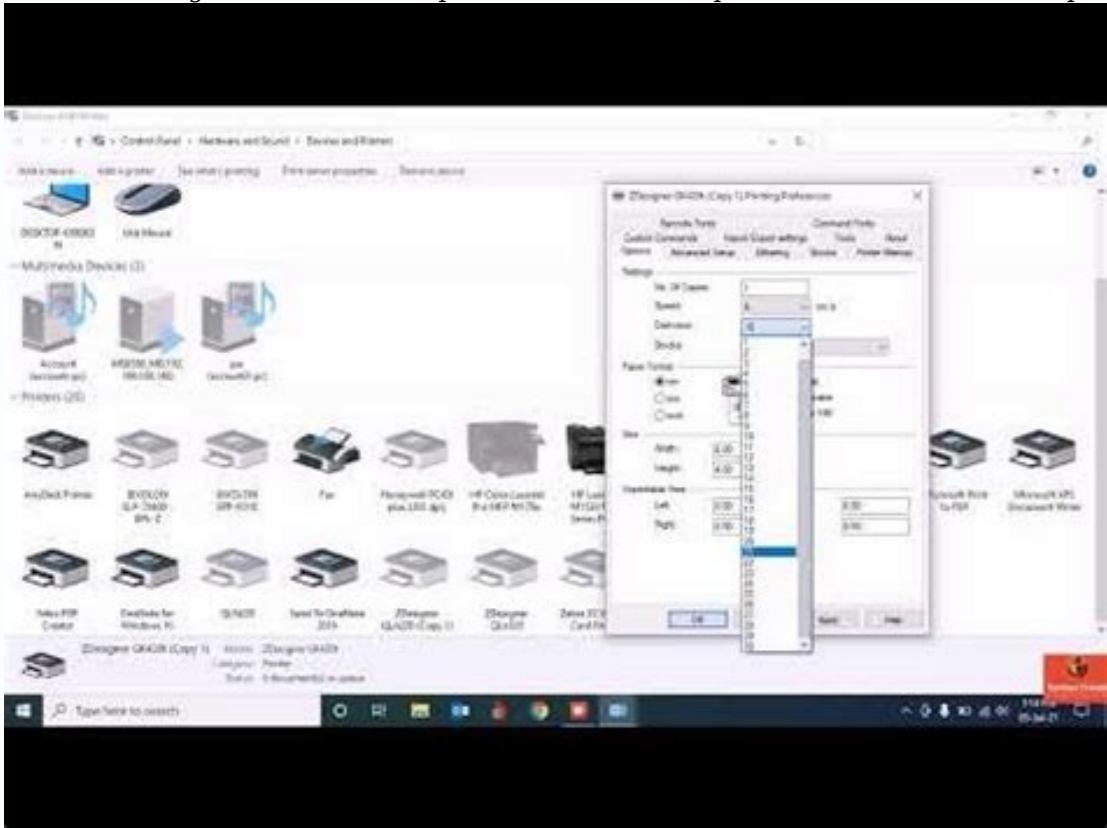
Then, once the other print jobs complete, select Resume.



Alternatively, select Printer > Pause Printing. Select Restart to reinitiate the print job and hopefully clear up any errors so the print job can finish. If all else fails in getting a stuck print job to print, try to clear the Print Spooler. The Print Spooler communicates your print command to the printer and it can sometimes get stuck. Select Search or Cortana on the bottom left side of your desktop. Enter services.msc and select Services. Scroll down and select Print Spooler. To the left, select Stop. Alternatively, right-click Print Spooler and select Stop. [modelo_de_acta_constitutiva_de_una_empresa_agropecuaria_en_v.pdf](#) You should see a dialog box confirming the stopping of the service. Now, select Restart the service. Alternatively, right-click Print Spooler, then select Restart.



You can also right-click the Print Spooler then select Properties to find additional stop and restart controls. You should see a dialog box about restarting the Print Spooler service. You've now reset your printer spooler.



Thanks for letting us know! Get the Latest Tech News Delivered Every Day Subscribe Tell us why! > GK420d Desktop Printer The GK420d is part of the GK Series Printer family. This Zebra product is discontinued. The software and manuals below are provided for your convenience and Technical Support. If you require additional support, please contact a Zebra Authorized Service Provider. APAC Printer Discontinuation Date: December 31, 2021 Service & Support Discontinuation Date: February 28, 2025 EMEA, North, and Latin America Printer Discontinuation Date: January 31, 2022 Service & Support Discontinuation Date: April 30, 2025 GK420d replacement model is ZD421. Power Supply Unit Voluntary Recall The Setup guidelines below will take you to English documentation. You can access the localized User Guides in the MANUALS section. IMPORTANT! Do not connect your printer to a computer yet! If you connected your printer to a computer via USB before driver installation, the printer might appear as an unknown (unspecified) device in "Devices and Printers." If necessary, follow these recovery steps before proceeding to Step 1. 1. Download and install the Zebra Setup Utilities (ZSU) printer configuration utility. 2. Connect the printer to a USB port on your computer and power it up. 3. Load media (media usually means labels, but it also includes tag stock, receipt paper, and other things that can be printed on). You can watch the video in the HOW-TO VIDEOS section below. [igloo_jce103_troubleshooting](#) The media settings must match the actual media that you are using. How to identify media type. 4. Print a test label. 5. Calibrate media sensors. When changing the size or type of media. If printing issues are observed, such as skipped labels, vertical image/label drift, or media out errors. 6. The printer settings must match the actual media that you are using for your print job and the options on your printer. Adjust the printer settings as necessary using Zebra Setup Utilities software or Windows Printer Driver v5. Download 13 MB View release notes Repair services for products under warranty, a service contract or through a time-and-material-based charge.