

Schedule "A"

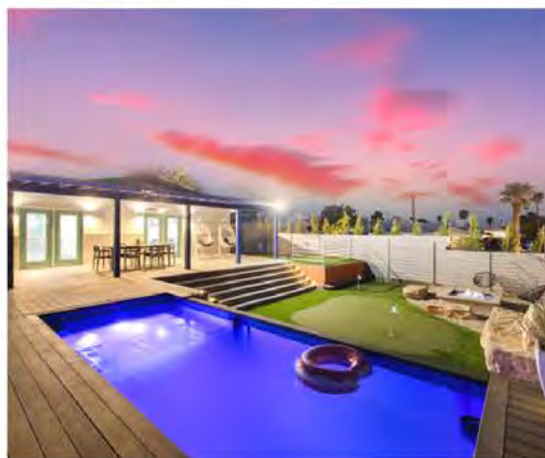


**MODPOOLS**

**Product Catalogue**

# MODPOOLS

Modpools is the original container pool of North America, with over 1000 container pools built and shipped across Canada and the USA. We use only the highest quality materials and equipment from North America's top suppliers. Modpools is a trusted brand regularly featured on TV and across social media.



## VERSATILE

Modpools can be installed in-ground, partially in-ground, above ground, on a slope, and even on a rooftop

## SMART POOL

Easily control the temperature, jets, and lighting of your Modpool from anywhere using your smartphone.

## FILL & CHILL

Unlike conventional pools that can take weeks to pour and cure, your Modpool can be up and running the day of its arrival

## HOT TUB

Add a Modpool divider wall to quickly and easily convert your Modpool into a hot-tub, and back to a pool again.



# 8'x20' Modpool



## SPECS

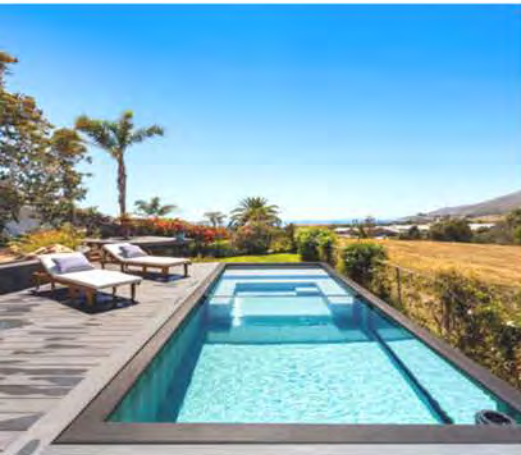
- 8'4" width, 20' length, 5'2" height
- 4'6" standard water depth
- Entry spa seating with 8 body jets
- Removable spa divider wall
- 400k BTU natural gas/propane heater
- Wi-Fi Kit - Easytouch PSL4 control
- Microbrite underwater LED light
- Intelliflow VSF variable speed pump
- 200 sqft cartridge filter
- Plug & play mechanical room

## AVAILABLE IN

- Aqua blue marine grade spray liner
- Light grey marine grade spray liner

## OPTIONAL ADD-ON

- Tru Guard Mineral System + UV Sanitation and 1 year supply of mineral cartridges





# 8'x20' Modpool with Cover



## SPECS

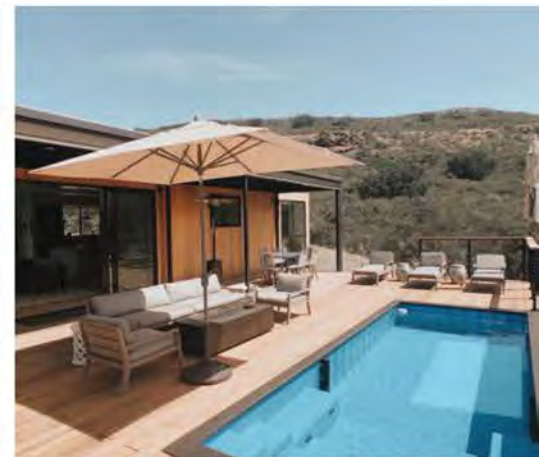
- 8'4" width, 20' length, 5'2" height
- 4'6" standard water depth
- Charcoal grey auto cover
- Entry spa seating with 8 body jets
- Removable spa divider wall
- 400k BTU natural gas/propane heater
- Wi-Fi Kit - Easytouch PSL4 control
- Microbrite underwater LED light
- Intelliflow VSF variable speed pump
- 200 sqft cartridge filter
- Plug & play mechanical room

## AVAILABLE IN

- Aqua blue marine grade spray liner
- Light grey marine grade spray liner

## OPTIONAL ADD-ON

- Tru Guard Mineral System + UV Sanitation and 1 year supply of mineral cartridges





# 8'x20' Modpool with Window & Cover



## SPECS

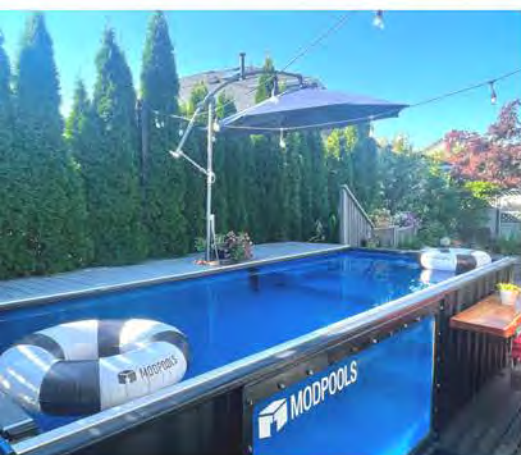
- 8'4" width, 20' length, 5'2" height
- 4'6" standard water depth
- 4'x8' acrylic window
- Charcoal grey auto cover
- Entry spa seating with 8 body jets
- Removable spa divider wall
- 400k BTU natural gas/propane heater
- Wi-Fi Kit - Easytouch PSL4 control
- Microbrite underwater LED light
- Intelliflow VSF variable speed pump
- 200 sqft cartridge filter
- Plug & play mechanical room

## AVAILABLE IN

- Aqua blue marine grade spray liner
- Light grey marine grade spray liner

## OPTIONAL ADD-ON

- Tru Guard Mineral System + UV Sanitation and 1 year supply of mineral cartridges





# 12'x20' Modpool



## SPECS

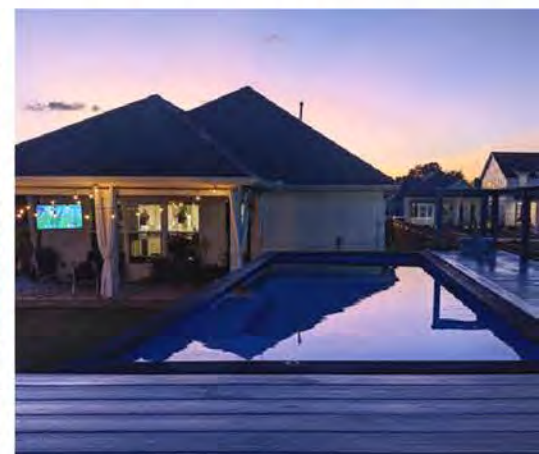
- 11'8" width, 20' length, 5'2" height
- 4'6" standard water depth
- Entry spa seating with 8 body jets
- Removable spa divider wall
- 400k BTU natural gas/propane heater
- Wi-Fi Kit - Easytouch PSL4 control
- Microbrite underwater LED light
- Intelliflow VSF variable speed pump
- 200 sqft cartridge filter
- Plug & play mechanical room

## AVAILABLE IN

- Aqua blue marine grade spray liner
- Light grey marine grade spray liner

## OPTIONAL ADD-ON

- Tru Guard Mineral System + UV Sanitation and 1 year supply of mineral cartridges





# 12'x20' Modpool with Cover



## SPECS

- 11'8" width, 20' length, 5'2" height
- 4'6" standard water depth
- Charcoal grey widened auto cover
- Entry spa seating with 8 body jets
- Removable spa divider wall
- 400k BTU natural gas/propane heater
- Wi-Fi Kit - Easytouch PSL4 control
- Microbrite underwater LED light
- Intelliflow VSF variable speed pump
- 200 sqft cartridge filter
- Plug & play mechanical room

## AVAILABLE IN

- Aqua blue marine grade spray liner
- Light grey marine grade spray liner

## OPTIONAL ADD-ON

- Tru Guard Mineral System + UV Sanitation and 1 year supply of mineral cartridges





# 12'x20' Modpool with Window & Cover



## SPECS

- 11'8" width, 20' length, 5'2" height
- 4'6" standard water depth
- 4'x8' acrylic window
- Charcoal grey widened auto cover
- Entry spa seating with 8 body jets
- Removable spa divider wall
- 400k BTU natural gas/propane heater
- Wi-Fi Kit - Easytouch PSL4 control
- Microbrite underwater LED light
- Intelliflow VSF variable speed pump
- 200 sqft cartridge filter
- Plug & play mechanical room

## AVAILABLE IN

- Aqua blue marine grade spray liner
- Light grey marine grade spray liner

## OPTIONAL ADD-ON

- Tru Guard Mineral System + UV Sanitation and 1 year supply of mineral cartridges

