

Sliding Patio Door Collection

PREMIUM VINYL PATIO DOORS



CONTEMPORARY PATIO DOOR
FRENCH SLIDING PATIO DOOR



IMPRESSIVE INSIDE & OUT



Superior Performance. Lasting Appeal.

Simonton® Sliding Patio Doors seamlessly connect your indoor and outdoor living spaces with expansive glass and smooth glide operation. Our Contemporary and French Rail Door Collections are precisely manufactured to earn the AAMA Gold Label, signifying best-in-class durability, weather resistance, and energy efficiency.



PREMIUM VINYL

Simonton vinyl is crafted with pride in the USA using high-quality raw materials for exceptional durability, thermal efficiency, and resistance to weather, insects, and decay.



COMPREHENSIVE WARRANTY

We stand behind the quality and craftsmanship of our windows and proudly offer a robust warranty covering our vinyl, hardware and glass units to ensure your total peace of mind.



TRUSTED EXPERTISE

We are proud to embrace our legacy as an American manufacturer—and we continue to deliver on our reputation for innovation and authenticity built over 75 years in the business.

The Perfect Style for Your Home.

Open your home to more natural light and outside views with two distinct door styles that will complement your home's architectural design. Select from a host of available options that will enhance both performance and beauty.



CONTEMPORARY PATIO DOOR

With a room-opening design, the Contemporary Patio Door fluently connects your indoor and outdoor living spaces. Its narrow frame and broad expanse of glass provide wide-open views and more natural light.



FRENCH SLIDING PATIO DOOR

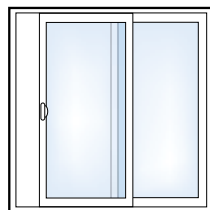
Featuring a broader traditional profile, the classic appearance of the French Sliding Patio Door provides the elegant look of a hinged door with the space-saving operation of a sliding patio door.

FEATURES

- Multi-point locking system secures the door with one operation.
- Tight seal against air and water infiltration with a full integral interlock.
- Smooth, easy glide panels feature wide-set, corrosion-resistant rollers and sill. Available stainless-steel rollers offer increased durability.
- Durable double-strength, tempered glass increases safety and helps reduce unwanted sound.
- Available frame options deliver precise installation for either replacement or new home applications.

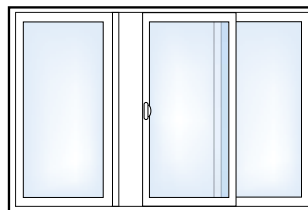
PANEL CONFIGURATIONS

Contemporary and French Patio Doors are custom-sized for your home in 2-, 3- and 4-panel configurations. Transoms and sidelites are available to expand the door for more natural light.



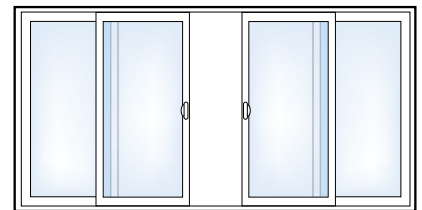
2-PANEL

Either the left or right panel can open.



3-PANEL

Active center panel can open left or right.



4-PANEL

Both center panels are active.

Energy Savings. Interior Comfort.

Simonton Patio Doors provide excellent energy performance to help reduce your heating and cooling costs and provide seasonal interior comfort. Additional glass options are available to enhance security, acoustics, privacy and fade protection.



LOW-E GLASS

Our selection of ProSolar® Low-E Glass offers specialized performance for diverse climates and seasonal variations. Select the ideal glass for your home to help reduce heating and cooling costs, block damaging ultraviolet rays and provide year-round comfort.



- ✓ Standard **ProSolar Low-E Glass** helps keep warm air in during the winter months. In summer, it helps deflect external heat and retains cooled air.



- ⊕ **ProSolar Sun Low-E Glass** lets in the sun's warming rays while blocking external heat loss, helping to keep homes warm in cooler climates that require more energy to heat.



- ⊕ **ProSolar Shade Low-E Glass** offers superior solar control and insulating performance, making it ideal for warmer climates with more intensive interior cooling needs.



- ⊕ **ProSolar Shade Plus Low-E Glass** offers exceptional solar control and insulating performance, making it ideal for warmer climates with more intensive interior cooling needs that also reduces heat loss in cooler months. Lightly tinted design allows visible light inside while reducing glare.



- ⊕ **PLUS4** is an interior surface Low-E glass combined with our ProSolar glass packages. Energy-saving PLUS4 reflects heat back into the home, maintaining interior warmth and providing superior insulation to help keep your living spaces more comfortable in colder climates.

KEY

- ✓ – Standard
- ⊕ – Optional



✓ **GAS FILL**

Standard **Argon gas** (six times denser than air) is sealed between the glass panes to increase insulation and reduce energy loss.



SPACER SYSTEMS

Glass panes are separated by a spacer system that helps seal in functional gases and create an airtight seal.

- ✓ The standard **Intercept®** spacer system helps keep glass warm and expands and contracts for reduced seal failure.
- ⊕ The **Supercept™** spacer system utilizes a stainless steel alloy that offers increased durability and thermal efficiency.
- ⊕ The non-metallic foam **Super Spacer®** is non-conductive and reduces energy transference and unwanted noise.



✓ **DOUBLE-STRENGTH GLASS**

Thick, double-strength glass is break resistant and offers increased sound control.



⊕ **SAFETY GLASS**

Heat-strengthened tempered glass is stronger than regular glass and safely breaks down into pebbles if broken. Tempered glass is often a building code requirement for use in bathrooms and windows near the floor.



⊕ **SOUND & SECURITY GLASS**

Laminated glass consists of a durable interlayer sealed between two layers of glass that withstands forced entry, greatly reduces unwanted sound and deflects up to 99% of damaging ultraviolet (UV) rays that cause interior fading.



⊕ **SOUND-ABATEMENT GLASS**

If you live in a noisy area, ask about specialty glass designed to reduce unwanted noise infiltration.



⊕ **TITLE 24**

Can be ordered to meet or exceed the California Energy Commission's standards for Title 24 compliance.



⊕ **ENERGY STAR®**

Simonton offers optional glass packages that meet ENERGY STAR requirements for optimal energy performance and comfort in any climate.

DECORATIVE GLASS OPTIONS

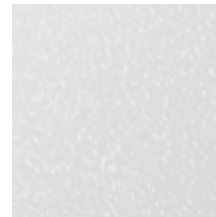
Decorative glass features unique textures that help maximize privacy while allowing in ample natural light. Tinted glass helps control solar heat gain while reducing glare and visibility into your home.



⊕ Rain



⊕ Glue Chip



⊕ Obscured



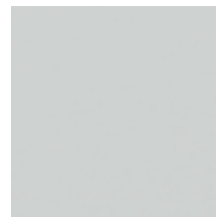
⊕ Flemish



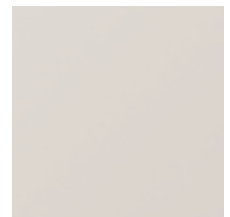
⊕ Delta Frost



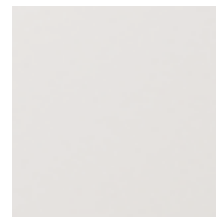
⊕ Reed



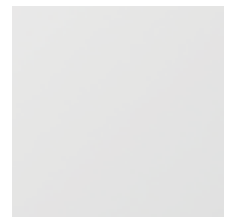
⊕ Satin Etch



⊕ Solarcool®
Bronze



⊕ Bronze Tint



⊕ Gray Tint

KEY

- ✓ - Standard
- ⊕ - Optional



Design Options

Bring your vision to life with a variety of color, hardware and grille options that will complement the interior and exterior aesthetic of your home.

EXTERIOR/INTERIOR VINYL COLORS



White



Tan

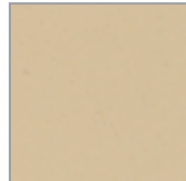
CUSTOM EXTERIOR FINISHES



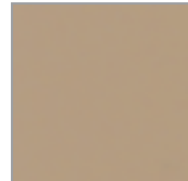
Cream



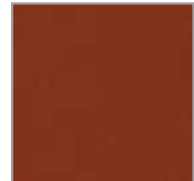
Silver



Tan



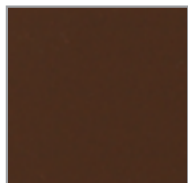
Driftwood



Brick



Pine



Chocolate



Espresso



Bronze



Black

DOOR HARDWARE

Color-coordinated handles can be upgraded to a distinctive metallic finish. Handles are available in keyed, non-keyed, and keyed alike. We also offer a choice of split-finish door handles. Choose any interior finish with a color-matched exterior as a standard offering.

COLOR-MATCHED HANDLE FINISHES



White



Tan

PREMIUM HANDLE FINISHES



Satin Nickel



Antique Brass



Brass



Oil-rubbed Bronze



Dark Bronze

GRILLES PROFILES & PATTERNS

Traditional or contemporary, the right grille profile and pattern can transform the look of your home. Easy-care grilles are located between the panes of glass and never need to be dusted or cleaned.

GRILLE PROFILES



5/8" Flat

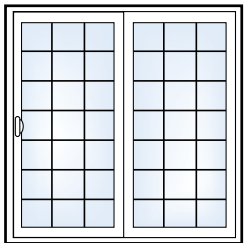


3/4" Contoured

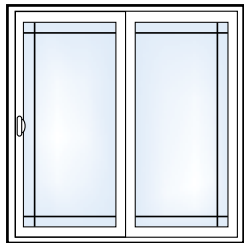


1" Contoured

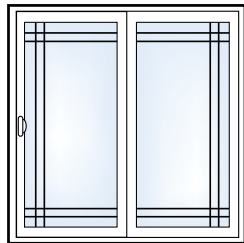
GRILLE PATTERNS



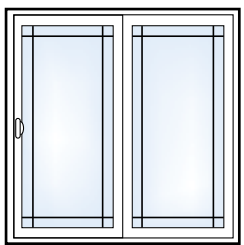
Colonial



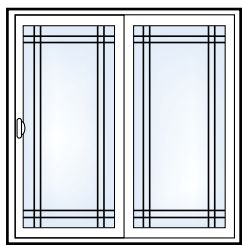
Perimeter



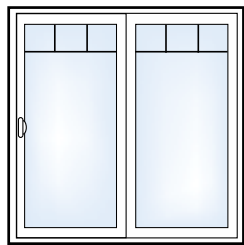
Double Perimeter



Queen Anne



Double Queen Anne



Victorian



Due to limitations in the printing process, actual colors may vary from printed materials. Please see a sample of the product before making your final color selection.



Scan to learn more about
Simonton Contemporary Patio Door.



Scan to learn more about
Simonton French Patio Door.



Part of the Cornerstone Building Brands family,
the #1 manufacturer of windows in North America.

 Made in USA

The information contained is current at the time of printing. Changes to the product(s) may have been made since publication. Not all product styles and options available in all areas. Please consult your sales representative prior to purchasing. Due to limitations in the printing process, actual colors may vary from printed materials. Please see a sample of the product before making your final color selection.

Simonton® and ProSolar® are registered trademarks and Supercept™, the Simonton logo and the stylized "S" are trademarks of Simonton Windows & Doors, Inc. Intercept® and Solarcool® are registered trademarks owned by Vitro. Super Spacer® is a registered trademark of Quanex Building Products. ENERGY STAR® is a registered trademark of the U.S. Environmental Protection Agency.

SIMONTON.COM



5020 Weston Parkway, Cary NC 27513 | 1-800-SIMONTON (1-800-746-6686)

IMPRESSIVE INSIDE & OUT



LIFETIME LIMITED WARRANTY

DAYLIGHTMAX™ & MADEIRA™

Simonton® Windows & Doors

Products

Simonton® Windows & Doors Products Simonton DaylightMax™ and Simonton Madeira™ (“Product”) include the following parts: vinyl components, hardware components, glass, and screens. This Limited Warranty applies only when all of these parts are genuine Simonton components.

Coverage

Lifetime Limited Warranty with Labor – Residential **10-Year Limited Warranty – Commercial/Multi-Resident**

Subject to the limitations and exclusions below, and for the duration of the applicable Warranty Period of the Residential Warranty Holder or Commercial/Multi-Resident Warranty Holder (as defined below), Simonton Windows, Inc. and Simonton Industries, Inc. (collectively hereinafter, “Simonton”), warrants that the Product will be free from non-conformities in material and workmanship. Simonton will (1) repair or replace any Product that fails to meet this Limited Warranty and (2) pay the reasonable costs of labor (only valid for products installed in Washington, Oregon, California, Nevada, Arizona and Hawaii) required to repair or replace any such defective Product (excluding screens and hardware that property owners are commonly capable of installing) of a Residential Warranty Holder that is installed up to an elevation of not more than three (3) stories (for Product installations over three stories contact Simonton for warranty consideration); provided in either case, Simonton may refund the purchase price (the lesser of the original Product/component purchase price or the original catalog list price) if in Simonton’s opinion such repair or replacement is not commercially practical or reasonable or cannot timely be made. This Limited Warranty is applicable to Products purchased and installed in the United States or Canada only.

| DaylightMax & Madeira | Warranty Holder - Classification and Duration* | |
|----------------------------------|---|-------------------------------|
| | Residential | Commercial/ Multi-Resident |
| Warranty Period | | |
| Vinyl & Interior Laminate | Double-Lifetime | 10 years |
| Hardware** | Double-Lifetime | 10 years |
| Glass | Double-Lifetime | 10 years |
| Glass Breakage | Double-Lifetime | N/A |
| Laminated Glass | 20 years | 10 years |
| Factory-Applied Exterior Coating | 10 years | 3 years (non-transferrable) |
| Screens | 1 year | N/A |
| Transferability | One subsequent homeowner for Lifetime for the balance of shorter warranty periods | 10 years* |

*Measured from the date of the original purchase date of the Product

**10 years on Door Handle Finishes

Lifetime Limited Warranty

Warranty Period

READ the Entire Limited Warranty for the conditions and limitations that apply to this information:

Residential Warranty Holder: Double-Lifetime Limited Warranty

The Lifetime Limited Warranty (excluding Factory-Applied Exterior Coating coverage) is transferable by the original Residential Warranty Holder once either (a) to a subsequent Residential owner and the Residential Warranty Period will continue ("Double Lifetime"), or (b) to a subsequent Commercial/Multi-Resident owner and the Commercial Warranty Period will apply only until the 10th anniversary of the original purchase date of the Product; and in either case for such a shorter period if it is expressly stated in this Limited Warranty for the Product component, and only if the Warranty has been properly transferred following the procedure set forth below. The Limited Warranty for Factory-Applied Exterior Coating and Laminated Glass (during the Warranty Period stated in the summary chart) is transferable by the original Residential Warranty Holder one time (i) to a subsequent Residential owner and the Limited Warranty will continue only for any balance of the stated Residential Warranty Period or (ii) to a Commercial/Multi-Resident owner if the transfer occurs during the first 10 years following purchase of the Product (not transferrable for Factory-Applied Exterior Coating, Glass Breakage or Screens) and will continue only until the 10th anniversary of the original Warranty Holder. In each case, transferability will be effective only if the Warranty has been properly transferred following the procedure set forth below.

Commercial/Multi-Resident Warranty Holder:

Ten (10) years from the earlier of the date Product was shipped from Simonton or an authorized dealer; transferable to successor non-Residential owners during and for any balance of the 10 year Warranty Period and only if the Limited Warranty has been properly transferred following the procedure set forth below. The three (3) year Factory-Applied Exterior Coating Limited Warranty on vinyl Product applies from the earlier of the date Product was shipped from Simonton or an authorized dealer and is NOT transferable. There is no ongoing warranty for Screens or Glass Breakage.

Warranty Transfer

Any Warranty Transfer described above will be deemed effective only if the following procedure is completed: (1) notice to Simonton within 30 days after the transfer of ownership of the premises where the Products are installed, (2) warranty transfer form completed online at [simonton.com/warranty](https://www.simonton.com/warranty). Please note you will be required to provide the Product order number (bar code located in the sash head, sill or jamb of each Product).

Warranty Holder Classifications

Residential Warranty Holders: If the Product is installed in (1) a new residential dwelling and the first occupant owns the dwelling or (2) an existing owner-occupied residential dwelling, and in each case, at the time of installation such owner is also responsible for Product replacement, then that owner is a Residential Warranty Holder. For example, assume the Product is installed in a condominium unit (a "dwelling") in a multi-resident building. If the first occupant of the condominium unit is the first owner of that unit (or the first Residential successor of the first owner) and is also responsible for Product replacement, then that owner is a

Simonton® Windows & Doors

Residential Warranty Holder; however, if the owner is not the first occupant of the condominium (nor the first Residential successor of the first owner) or if someone else other than such owner (for example, the condominium association) is responsible for Product replacement, then the owner is not a Residential Warranty Holder.

Commercial/Multi-Resident Warranty Holders: If the Product is installed under conditions in which no one qualifies as a Residential Warranty Holder as described above, then the warranty holder is the owner of the dwelling or building in which the Product has been installed at the time of installation (and its builder and contractor). That owner is classified as a Commercial/Multi-Resident Warranty Holder. For example, this includes owners of commercial or investment buildings, or multi-resident premises in which the occupant is not responsible for Product replacement whether or not the occupant owns the residential dwelling unit in the premises (e.g., certain condominiums, town homes, duplexes, apartments, cooperatives).

This Limited Warranty is further subject to the limitations and exclusions below:

BAYS, BOWS, AND GARDEN WINDOW PRODUCTS

All Products making up a bay, bow, or garden window are covered under this Limited Warranty ONLY if the use, installation, finishing and maintenance are consistent with Simonton's recommendations and written instructions that are generally available in Simonton's Installation Instructions as updated by bulletins or other written communications or on Simonton's Worldwide websites simonton.com. However, without limiting the foregoing, the following installation procedures are emphasized and failure to do so will void the Limited Warranty:

- A roof must be built over all bay or bow windows (not required for a garden windows) after installation as the top of the bay or bow window is not designed to prevent water penetration as manufactured, without the help of a roof
- A cable system must be used to help support from above all bay or bow windows (not required for a garden windows)
- Knee braces must be utilized and must be secured to studs to help support from below all garden windows with nailing flange and no jamb
- All joints must be checked and caulked with caulking compound because handling of the Product during installation may cause factory sealed joints to be compromised
- DO NOT USE water-based stains or water-based sealers on the Oak or Birch veneer in the Bay/Bow or Garden Window unit. Use of water-based stains or water-based sealers can cause delamination or other damage of the wood veneer and is not covered by the limited warranty

VINYL (GENERAL) AND FACTORY APPLIED INTERIOR LAMINATE OPTION

(EXCLUDING ANY FACTORY APPLIED EXTERIOR COATING)

**Double-Lifetime – Residential;
10 Years – Commercial/Multi-Resident**

Vinyl components of Products and their standard or factory-applied laminated interior surfaces (excluding any Factory-Applied Exterior Coating) are warranted against peeling, flaking, chipping, blistering and corrosion during the applicable Warranty Period. If such defects occur, Simonton will provide replacement parts at no cost to the Warranty Holder. Shipping and handling fees may be charged.

Lifetime Limited Warranty

Simonton reserves the right to provide replacement products with comparable functionality but any such replacement products are NOT guaranteed to match the color of the original Product or component or of other windows or doors in the premises. This Limited Warranty becomes void if the vinyl or any interior surface or laminate is painted, stained, or if the surface is altered in any way, or as provided below at "WHAT THIS WARRANTY DOES NOT PROVIDE."

Factory-Applied Exterior Coating Residential – 10 Years; transferable and continuing until 10th anniversary of Product original purchase

Commercial/Multi-Resident – 3 Years; not transferable

For Products purchased with a Factory-Applied Exterior Coating on the vinyl components, the factory-applied exterior coating is warranted to the Residential Warranty Holder against peeling, flaking, chipping, blistering and corrosion, and for significant ultraviolet fading or discoloration caused by natural environmental conditions (subject to the limitations below), during the applicable Warranty Period. If such defects occur, Simonton may, at its option and in its sole discretion, provide the Warranty Holder factory-authorized repair at no charge, or provide replacement parts only at no charge to the Warranty Holder (the cost assembly and labor would be the responsibility of the Warranty Holder), or refund the lesser of the purchase price of the original Product, the purchase price of the component, or the catalog list price at the time of the original purchase). Shipping and handling fees may be charged. Repaired or replaced Products or components are NOT guaranteed to match the color of the original Product, component, or of other windows or doors in the premises, due, in part, to the normal effects of weathering over time on exterior coating or finishes.

This Limited Warranty does NOT include non-conformities or damage attributable to or arising from:

- **Any painting, staining, or other alteration of the factory-applied exterior coating surface of the Products**
- Minor scratches or minor visual imperfections within the Product's standard manufacturing and quality specification parameters
- Damage to the factory-applied exterior coating occurring after the Product leaves Simonton's facility, whether arising during pre-installation handling or storage (e.g., inadequate shelter or inadequate venting of shipping wrap in hot and humid locations), installation, maintenance, or otherwise
- Minor scoring or scratching of the factory-applied exterior coating surface due to normal operation of the Products is not considered a manufacturing defect
- Chemicals or solvents (e.g., acidic brick washes, or stucco leach)
- Maintenance inconsistent with the Care and Maintenance recommendations set forth in the Limited Warranty
- Harsh natural environmental conditions (e.g., from substantial exposure to sun, salt spray or airborne pollutants)
- Excessive artificial temperature buildup or exposure (e.g., from the use of storm doors or windows or shutters under certain circumstances)
- Installation in locations or in a manner that exceeds or deviates from product design standards and/or testing and certified performance specifications, and/or is not in compliance with the applicable building code

Simonton® Windows & Doors

- Labor for removing, installing, or replacing Product or components or labor for other materials that are removed, reinstalled, or refinished in conjunction with repairing or replacing the Product or component
- Fading, discoloration, or color change of the factory-applied color coating that equals or is less than five (5) E units (as calculated in accordance with ASTM D2244, paragraph 6.2, effective on the date the Product is manufacture) and which covers less than a material portion or the exterior vinyl components of the Product. Color change will be measured based on the exposed colored surface of the Product that has been properly cleaned of soils, and the corresponding values measured on the original or unexposed colored surface. Non-uniform fading or color change is a natural occurrence when the exterior surfaces of the Product are not exposed to the sun and other environmental conditions on an equal basis
- Any matter stated in “WHAT THIS WARRANTY DOES NOT PROVIDE”

Hardware

Double-Lifetime (10 years door hardware finish) – Residential; 10 years – Commercial/Multi-Resident

The Product Hardware (mechanical and locking mechanisms, stainless steel hinge system, hardware finishes (standard and custom)) and other operating hardware components are warranted against peeling, flaking, rusting, blistering, corrosion, and breaking during the applicable Warranty Period. If such defects in the Product Hardware and other operating hardware occur, Simonton will provide replacement parts at no cost to the Warranty Holder. Shipping and handling fees may be charged. Repaired or replaced hardware or Products with hardware are **NOT** guaranteed to match the color of the original Product or component of other windows or doors in the premises. Notwithstanding the foregoing, Product Hardware on Casement/Awning style-windows that are installed within two (2) miles of any body of salt water with stainless steel and/or coastal product hardware (i.e., no finish) is only covered

| Product Hardware | Residential | Commercial/ Multi-Resident |
|---|--------------------|---------------------------------------|
| Mechanical and Locking Mechanisms and Finish: Windows (for windows: cam locks, lift handles, crank handles, and any applied lift/pull handle not extruded as part of the vinyl sash) | | |
| With Standard Finishes (white, driftwood) and Custom Finishes (dark bronze, satin nickel, brass) | Double-Lifetime | 10 Years |
| Mechanical and Locking Mechanisms and Finish: Door (for patio doors: patio door handles and locksets or multi-point locking system) | | |
| With Standard Finishes (white, driftwood) and Custom Finishes (dark bronze, satin nickel, brass) | 10 years | 10 Years |
| Other Operating Hardware Components: (for windows: fasteners, rollers, balances; for patio doors: hinges) | Double-Lifetime | 10 Years |

Lifetime Limited Warranty

for a **TWO (2) YEAR WARRANTY PERIOD** that begins to run on the date of the original purchase of the Product. The provisions of "WHAT THIS WARRANTY DOES NOT PROVIDE" apply:

Hardware Labor Coverage – Residential

In general, the Lifetime Limited Warranty of a Residential Warranty Holder does not include the labor cost of installing replacement hardware components that residential property owners are commonly capable of installing themselves. Simonton will evaluate special circumstances and requests of Residential Warranty Holders for labor coverage for hardware replacement on a case-by-case basis. The Limited Warranty of a Commercial/Multi-Resident Warranty Holder does not include the labor cost of installing replacement hardware components.

Glass

Double-Lifetime – Residential; 10 Years – Commercial/Multi-Resident

The installed and sealed insulating glass unit is warranted against permanent and material obstruction of vision from film formation caused by dust or moisture in the air space during the Warranty Period. If such defects occur, Simonton will replace the insulating glass unit at no charge to the Warranty Holder.

Insulating glass units containing capillary tubes (recommended for use in insulating glass units traveling through or being installed in areas with elevations 7,000 feet or more above sea level) are warranted against permanent and material obstruction of vision from film formation caused by dust or moisture in the air space during the Warranty Period. If such defects occur, Simonton will provide a replacement insulating glass unit at no charge to the Warranty Holder.

This Limited Warranty for Glass does not include:

- Minor variations in glass color or imperfections that do not affect the structural integrity of the glass or do not permanently and materially obstruct vision, including but not limited to minor distortion or waviness inherent to heat strengthened, tempered and laminated glass
- Damage to adjacent buildings or building components as a result of sunlight reflecting off a window or door. This includes but is not limited to any objects or property that may be permanently or intermittently in the path of reflected light. This reflected light is not a defect or deficiency in the glass or the window/door
- Any sound that occurs from the grilles/grids tapping or otherwise striking the glass due to vibrations from use of the window or exterior vibrations to the windows (such as caused by opening or closing the window or a nearby door, animals, person, or objects striking the glass; wind; or outside traffic, trains, or airplanes, etc) is not considered an imperfection or defect, nor is the grille/grid touching the glass (even in triple-strength units) considered an imperfection or defect
- Glass covered with after-market window films, coatings or other products not originally supplied by Simonton
- Stresses from localized heat which causes excessive temperature differentials over the glass
- Post-manufacture dissipation of inert gases (as Argon), or the amount of gas in Products with inert gas-filled insulating glass
- Scratches or other imperfections not readily observable beyond four feet away for standard glass and 11 feet for tempered glass

Simonton® Windows & Doors

- Mineral deposits
- Internal and external condensation*, frost, dew or mold resulting from humidity within the building or from outside conditions along with interior/exterior temperature differentials

*There is no such thing as a condensation-free window in high humidity conditions. Controlling the amount of moisture in your home is the most effective action you can take to avoid internal condensation. External condensation can also occur under certain atmospheric conditions. When the external glass temperature drops below the outdoor dew point temperature, exterior condensation can occur. For additional information concerning condensation, please visit simonton.com/condensation

Glass Breakage Double-Lifetime – Residential (Select States)

If the glass component of the Product (including products made with tempered glass) breaks during the Warranty Period of a Residential Warranty Holder, Simonton will replace the glass component at no charge to the Warranty Holder in the following states only: Washington, Oregon, California, Nevada, and Arizona and Hawaii. All products sold in remaining U.S. states and Canada are excluded from this portion of the warranty. This Lifetime Glass Breakage Limited Warranty does not include:

- Specialty glass such as glass with grille/grid patterns that have been cut into the glass surface
- Glass breakage following a transfer of the premises on which the Product is installed to a Commercial/Multi-Resident Warranty Holder
- Breakage arising from “Certain Environmental Conditions” as set forth below
- Breakage arising from riot or civil disorder, building settlement or structural failures of walls or foundations

Laminated Glass Option 20 Years – Residential 10 Years – Commercial/Multi-Resident

For Products purchased with the optional laminated glass feature, the laminated glass is warranted against defects resulting in material obstruction of vision or delamination under normal usage. If such defects occur during the first 20 years of the Residential Warranty Holder’s Warranty Period, or occur during the first 10 years of the Commercial/Multi-Resident Warranty Holder’s Warranty Period, Simonton will provide a replacement insulating glass unit with the laminated glass feature at no charge to the Warranty Holder. For clarification, all other provisions of this Limited Warranty applicable to the Insulating Glass Unit continue to apply to Product purchased with the optional laminated glass feature.

Screens

1-Year – Residential

The Product’s screen frame is warranted to the Residential Warranty Holder against peeling, flaking, blistering and corrosion during the Warranty Period. The fiberglass screen mesh is warranted to the Residential Warranty Holder against insect damage, accidental punctures and tears during the Warranty Period. If such defects occur, Simonton will ship via common carrier replacement screens at no charge to the Residential Warranty Holder. This Limited Warranty does not include:

- Screen material damage caused by domestic or wild animals
- Bent screen frames due to improper installation or removal
- Installation and the cost of labor for screen replacement

Lifetime Limited Warranty

What This Limited Warranty Does NOT Cover

a) Generally

This Limited Warranty does not include non-conformities or damages attributable to or arising from:

- Minor scratches or minor visual imperfections
- Negligence; vandalism, riot or civil disorder, acts of terrorism, improper use, installation, finishing, maintenance or operation inconsistent with Simonton's recommendations or with written instructions that are generally available in Simonton's installation instructions as updated by bulletins or other written communications or on Simonton's website (simonton.com or simonton.com/support).
- Improper pre-installation storage, including inadequate shelter or inadequate venting of shipping wrap in humid locations
- Misapplication or faulty building design or construction, including inadequate flashings or caulking; building settlement or structural failures of walls or foundations
- Subjection to improper temperature, humidity, or other environmental conditions (e.g., harmful fumes, vapors, solvents, chemicals, or pollutants in the atmosphere)
- Normal wear and tear (e.g., wear and tear to weatherstripping or door bottom gaskets)
- The caulking used to seal the frames or trim packages
- Product installations over an elevation of three stories, unless a written exception to this Limited Warranty exclusion has been obtained from Simonton in advance of such an installation
- Products installed other than in the United States or Canada

b) Certain Environmental Conditions

This Limited Warranty does not guarantee safety for persons or property, nor make a premises hurricane-proof or impact-proof. Follow weather and news reports in order to assess severe weather situations and obey local authorities' shelter and evacuation orders. This Limited Warranty does not cover damage attributable to or caused by acts of nature that include, but are not limited to stresses, high winds, floods, fire and other conditions that exceed Product designs that are test evaluated and certified as referenced in Simonton's published literature. **CERTIFICATION APPROVAL, RATING, AND REFERENCES TO OTHER PERFORMANCE STANDARDS MEAN THAT THE PRODUCT MEETS THE ESTABLISHED SPECIFICATION PARAMETERS OF THE CERTIFICATION PROCESS OR STANDARD TESTING IN PLACE AT THE TIME THE PRODUCT IS MANUFACTURED.**

However, with exposure over time to environmental conditions (e.g., high-wind events and other forces of nature)) the Product will be subjected to normal and abnormal wear and its performance capability may change. Consult local building codes and laws, and the certification and rating agencies' published materials and websites for guidelines on the standards necessary to meet all the applicable regulations and codes in the location of your residence or building. Product features designed to help address pressurization of a building during high-wind or other severe storm events are not a guarantee against water and air infiltration. Simonton is not responsible for claims or damages caused by water or air infiltration or improper installation. **PRODUCT SELECTION IS THE SOLE RESPONSIBILITY OF THE WARRANTY HOLDER.**

Simonton® Windows & Doors

NOTE: Exterior accessories manufactured by Simonton for retrofit or new construction products are not designed and not intended by Simonton to be used by the Warranty Holder or its agents as a barrier against water infiltration and are NOT A SUBSTITUTE FOR ADEQUATE FLASHINGS or other appropriate building design, construction and installation considerations. Simonton is not responsible for building, structural, or other damage that has occurred as a result of water that may penetrate between the Product and any applied accessory.

c) Damage From Failure to Inspect Product Following Each High-Wind or Impact Event

Product that is subject to any high wind event or the possibility of having been impacted by wind-borne debris should be promptly inspected by the Warranty Holder or by a building professional if the Warranty Holder cannot perform this inspection themselves or if there is concern about Product damage. Proper care and maintenance of the Product is the responsibility of the Warranty Holder and failure to do so may void the Limited Warranty. Although a Product may appear to be in good working condition, the effects of such an event(s) may have adversely affected the ability of the Product to provide subsequent protection against another such event.

This Limited Warranty's Exclusive Remedy

If the Product or any of its components fail to meet this Limited Warranty, Simonton's sole obligation is, to either (at Simonton's option and in its sole discretion): a) repair the component (aesthetic matching not guaranteed); or b) provide replacement component(s) to the Warranty Holder or to Simonton's designated dealer (aesthetic matching not guaranteed); or c) refund the Warranty Holder's purchase price (the lesser of the original Product, component purchase price or the original catalog list price). The cost of labor associated with the foregoing repairs or replacement of components is Simonton's obligation only to the extent that it is expressly provided under "Coverage." Repaired or replaced components are warranted only on the same terms as in the Limited Warranty and for the remainder of the Warranty Period. Simonton reserves the right to discontinue or change any Product. If the Product or component is not available, Simonton may select and provide a replacement Product or component of equal quality and price. This is the Warranty Holder's sole and exclusive remedy for the Product under this Limited Warranty. By example, but not limitation, this Limited Warranty does not cover the following costs and expenses: (i) except as expressly set forth in this Limited Warranty, labor for removing, reinstalling, refinishing Product (or other materials that are removed, reinstalled or refinished to repair or replace the Product); (ii) shipping/freight expenses to return the Product to Simonton; (iii) normal maintenance; or (iv) consequential, incidental, special, or indirect losses or damages of any kind.

Disclaimer of Warranties

THIS LIMITED WARRANTY IS IN LIEU OF AND EXCLUDES ALL OTHER WARRANTIES NOT EXPRESSLY SET FORTH HEREIN, EXPRESS OR IMPLIED BY OPERATION OF LAW OR OTHERWISE, INCLUDING BUT NOT LIMITED TO ANY IMPLIED WARRANTIES OF MERCHANTABILITY OR FITNESS FOR A PARTICULAR PURPOSE. TO THE EXTENT THAT ANY IMPLIED WARRANTIES MAY NONETHELESS EXIST BY OPERATION OF LAW, SUCH WARRANTIES ARE LIMITED TO THE DURATION PROVIDED BY LAW. SOME STATES/PROVINCES DO NOT ALLOW LIMITATIONS ON HOW LONG AN IMPLIED WARRANTY LASTS, SO THE ABOVE LIMITATIONS MAY NOT APPLY. SIMONTON DOES NOT AUTHORIZE ANYONE TO CREATE FOR IT ANY OBLIGATION OR LIABILITY IN CONNECTION WITH PRODUCTS.

Lifetime Limited Warranty

Limitation of Liability

SIMONTON'S SOLE LIABILITY UNDER THIS LIMITED WARRANTY IS REPLACEMENT, REPAIR, OR REFUND OF THE PURCHASE PRICE AS SET FORTH ABOVE (AND LABOR AS EXPRESSLY SET FORTH ABOVE). IN NO EVENT, WILL SIMONTON BE LIABLE FOR INCIDENTAL, CONSEQUENTIAL, INDIRECT, SPECIAL, OR PUNITIVE DAMAGES INCLUDING, BUT NOT LIMITED TO, DAMAGE OF ANY KIND TO A PREMISES, LOSS OF PRODUCT USE, REINSTALLATION, LABOR, REMOVAL, REFINISHING (EXCEPT TO THE EXTENT EXPRESSLY PROVIDED IN THIS LIMITED WARRANTY, TEMPORARY OR PERMANENT RELOCATION OF RESIDENTS OR PROPERTY, LOSS OF PROFITS/REVENUE, INTEREST, LOST GOODWILL, WORK STOPPAGE, IMPAIRMENT OF OTHER GOODS OR WORK, INCREASED OPERATING EXPENSES, EMOTIONAL DISTRESS CLAIMS, OR CLAIMS OF THIRD PARTIES FOR SUCH DAMAGES, WHETHER BASED ON CONTRACT, WARRANTY, TORT (INCLUDING, BUT NOT LIMITED TO, STRICT LIABILITY OR NEGLIGENCE) OR OTHERWISE, EVEN IF ADVISED OF THE POSSIBILITY OF SUCH DAMAGES.) SOME STATES DO NOT ALLOW THE EXCLUSION OR LIMITATION OF INCIDENTAL OR CONSEQUENTIAL DAMAGES, SO THE ABOVE LIMITATION OR EXCLUSION MAY NOT APPLY IN SUCH STATES. THIS LIMITED WARRANTY PROVIDES SPECIFIC LEGAL RIGHTS BUT THE WARRANTY HOLDER MAY HAVE OTHER RIGHTS WHICH VARY FROM STATE TO STATE. IF THIS LIMITED WARRANTY IS DEEMED TO HAVE FAILED OF ITS ESSENTIAL PURPOSE, IN NO EVENT WILL SIMONTON'S TOTAL LIABILITY EXCEED THE LESSER OF THE PRODUCT'S PURCHASE PRICE OR THE NON-CONFORMING COMPONENT'S PURCHASE PRICE.

Claims

Claims must be initiated during the Warranty Period. To initiate a claim, please contact the builder, dealer or contractor who installed or sold the Product. If that party is unknown or unreachable, contact Simonton Windows & Doors, Inc. at simonton.com/support or simonton.com/warranty. Claimant will be required to provide proof of premises ownership, the date of the original Product purchase, the order number (bar code located on the sash head, jamb or sill of each Product), and specify the alleged defect. Simonton reserves the right to inspect the Product, and Claimant may be required to return the Product or component to Simonton (at Claimant's expense).

Care and Maintenance of Your Vinyl Windows and Doors

Congratulations on choosing windows and doors with the virtually maintenance-free benefits of vinyl. As a result, with simple proper care and cleaning, your windows and doors can keep their beautiful appearance for years.

Like any surface exposed to outside elements, your windows and doors will get dirty from time to time, but cleaning them is rather simple. Often, heavy rains will wash the vinyl clean, but if the rain isn't enough, you can restore the splendor of your windows and doors by following these straightforward instructions.

Vinyl Windows and Doors

- Wash using a mild detergent (if necessary) and a soft cloth or ordinary long-handled soft bristle brush. Do not wash the windows or doors with a high-pressure spray. The extreme pressure could crack or destroy the caulking around the window or door

Simonton® Windows & Doors

- For difficult to remove dirt and stains use the readily available household cleaners listed on the chart. Follow the manufacturer's instructions on the use of the cleaners
- In some cases, you may wish to use a mildly abrasive cleanser such as Soft Scrub® or a Mr. Clean® Magic Eraser® but the use of any abrasive material could scratch the surface of the glass and window or door frame
- **DO NOT USE** liquid grease remover, adhesive removers such as Goo Gone®, strong soaps or detergents containing organic solvents, nail polish remover, furniture polish, cleaners containing chlorine bleach, or rust removers containing hydrofluoric acid. These items could affect the surface appearance of the vinyl and glass

Cleaners to Help Remove Stains From Vinyl Windows and Doors

| | |
|------------------------------|--|
| Bubble Gum | Fantastik® All Purpose Cleaner, Murphy Oil Soap®, solution of 30% vinegar and 70% water, Windex® |
| Crayon | Lestoil®, Mr. Clean® Magic Eraser® |
| DAP (oil-based caulk) | Fantastik® All Purpose Cleaner |
| Dirt and Scuff Marks | Fantastik® All Purpose Cleaner, Lestoil®, Mr. Clean® Magic Eraser®, Murphy Oil Soap® |
| Felt-tip pen | Fantastik® All Purpose Cleaner, water-based cleansers |
| Grass | Fantastik® All Purpose Cleaner, Lysol®, Murphy Oil Soap®, Windex® |
| Lipstick | Fantastik® All Purpose Cleaner, Lysol®, Murphy Oil Soap® |
| Lithium Grease | Fantastik® All Purpose Cleaner, Lestoil®, Murphy Oil Soap®, Windex® |
| Mold and Mildew | Fantastik® All Purpose Cleaner, solution of 30% vinegar and 70% water, Windex® |
| Motor Oil | Fantastik® All Purpose Cleaner, Lysol®, Murphy Oil Soap®, Windex® |
| Oil | Soft Scrub® |
| Paint | Mr. Clean® Magic Eraser® |
| Pencil | Soft Scrub®, Mr. Clean® Magic Eraser® |
| Rust | Fantastik® All Purpose Cleaner, Murphy Oil Soap®, Windex® |
| Tar | Soft Scrub® |

*Cleaning materials are listed in alphabetical order

Glass

- For routine cleaning, we recommend using a 30% white vinegar and 70% water premixed cleaning solution. Use a soft, lint-free cloth or paper towels to wipe clean, rubbing in different directions. If there is any residual streaking, rinse with clear water and wipe again
- Ammonia-free glass cleaners such as Windex® also produce good results
- Rinse windows and doors first if there is excessive dirt and debris
- Thoroughly dry water and/or cleaning solution from glass and all window surfaces

Lifetime Limited Warranty

- **DO NOT** use razor blades, metal blades, abrasive cleaning solutions or materials to clean the glass due to the high probability that damage to the glass will occur
- **DO NOT CLEAN GLASS WITH A HIGH-PRESSURE WASHER. THE EXTREME SPRAY PRESSURE COULD DAMAGE THE GLAZING AND DESTROY THE SEAL OF THE INSULATING GLASS UNIT**

Interior Laminates

- Use warm soapy water for routine cleaning and dry thoroughly
- Mild household cleaners can also be used to clean interior laminates. Always test the cleaner on an inconspicuous area to ensure compatibility with the laminate surface
- **DO NOT use abrasive scrubbing devices, organic solvents or abrasive cleansers as they will cause surface damage**

Exterior Coatings

- Wash using mild detergent (if necessary) and a soft cloth or ordinary long-handled soft bristle brush. **Do not clean the exterior coating with a high-pressure washer. The extreme spray pressure could damage the surface or crack or destroy the caulking around the window or door**
- Mild window cleaners that are safe to clean the exterior coating on windows and doors include Windex® and Formula 409®
- **DO NOT** use liquid grease remover, strong soaps and detergents containing organic solvents, nail polish remover, furniture polish or cleaners containing chlorine bleach. These items could affect the surface appearance of the vinyl

Screens

- For routine cleaning carefully vacuum your window screens
- To thoroughly clean window screens, remove the screens from the window frame. Place the screens on a flat surface (such as the driveway) and use mild soap and water with a soft bristle brush to remove dirt and grime. Clean both sides of the screen and around the interior and exterior of the frame. Rinse off the unit with lukewarm water. Allow the screen to dry completely before replacing in the window
- **DO NOT** use a high-pressure washer to clean screens; it could damage the units
- **USE EXTREME CARE WHEN CLEANING ALUMINUM MESH, SINCE IT CAN BE DENTED OR CREASED IF TOO MUCH PRESSURE IS PLACED ON THE SCREEN**

Operation of Your Vinyl Windows and Doors

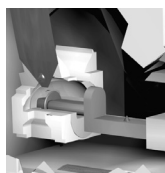
Along with being virtually-maintenance free, your windows and doors have been designed and manufactured to be thermally efficient, aesthetically pleasing and easy to operate. All operable sash on Double Hung and Single Hung windows tilt in, Slider sash lift out, Casements open by turning the handle and patio doors feature corrosion-resistant rollers.

To tilt in the operable sash on Double Hung and Single Hung windows, you must:

- Unlock the bottom sash and raise it approximately 4" above the frame

Simonton® Windows & Doors

- On the top of the sash you'll find the tilt latches. Slide the tilt latches toward the window lock and gently tilt and lower the sash towards you, letting it rest against the window sill



Balance Shoe

- If the sash is large and heavy, or the sash can't hang down freely, you may need assistance to support the tilted sash while cleaning. While cleaning the window, make sure you do not hold the tilted sash at a 90 degree angle and do not push up on the sash where it connects to the frame of the window. Doing these things may cause the sash to disengage from the frame. If this happens, see below instructions on how to re-insert the sash into the frame
- To clean the top sash on Double Hung windows, the bottom sash needs to be tilted in and resting on the sill prior to tilting the top sash. The top sash can tilt in and rest on the open tilted bottom sash for easy cleaning
- When finished cleaning, tilt the top and bottom sash up and snap the tilt latches into place. For safety, make sure the tilt latches are securely engaged
- If it becomes necessary to remove and reinsert the sash, tilt the sash inward to a 90-degree angle and lift the bottom of the sash up and out of the frame. To reinsert the sash into the frame, make sure both pivot bars (located at the bottom of the sash) are fully inserted into the balance shoes

To remove a Slider sash, simply:

- **Unlock the sash and slide it past the sash retainer insert located in the head.** *Note: Some windows may have a sash retainer clip instead of an insert that must be removed before opening the sash*
- Lift the sash up into the head and pull the bottom of the sash towards you

To operate Casements:

- Lift the locking lever on the side of the frame to unlock the sash. Turn the handle on the bottom of the frame to open the sash to the desired position
- Turn the handle in the opposite direction to close the sash. To lock the window, make sure the sash is fully closed then lower the locking lever on the side of the frame

To lock doors:

- Close the operable panel and make sure it is fully against the frame
- Lock the panel with the lever located on the handle

Lifetime Limited Warranty



Activate your Double-Lifetime Limited Warranty at simonton.com/warranty. You will need the following information to complete the warranty registration. Please keep for your records.

PRODUCT INFORMATION

Installation Date _____

Order No. _____

HOW TO LOCATE YOUR ORDER NUMBER

Locate the following label in the head, sill or jamb of operable windows & doors to find your order number. Label can also be found in the head of picture windows.



Number of Windows Purchased _____

Number of Doors Purchased _____

HOMEOWNER INFORMATION (please print)

Name _____

Address _____

City _____

State _____

Zip _____

Telephone _____

Email _____

DEALER INFORMATION (please print)

Company Name _____

Address _____

City _____

State _____

Zip _____

Telephone _____

Email _____



SIMONTON[®]
WINDOWS & DOORS

Simonton[®] is a registered trademark and DaylightMax[™], Madeira[™], the Simonton logo and the stylized "S" are trademarks of Simonton Windows & Doors, Inc. Mr. Clean[®] Magic Eraser[®] is a trademark of Procter & Gamble, Inc. Fantastik[®] and Windex[®] are trademarks S. C. Johnson & Son, Inc. Lestoil[®] and Formula 409[®] are trademarks of The Clorox Company. Soft Scrub[®] is a trademark of Henkel Corporation. Lysol[®] is a trademark of Reckitt Benckiser Inc. Murphy Oil Soap[®] is a trademark of Colgate-Palmolive Company. Goo Gone[®] is a registered trademark of Weiman Products, LLC.

© 2023 Simonton Windows & Doors, Inc., part of
Cornerstone Building Brands, Inc. ALL RIGHTS RESERVED.
Printed in U.S.A. 7109187211101/RevC/MS/IMG/0323



Madeira Contemporary Door Product Series

Air-Water-Structural Performance

| Product | Window Type | Series/Model # | Test Size | Rating | Reinforcement | Air Infiltration (cfm/sq. ft) | Water Pressure (psf) | Structural Pressure (psf) | Florida Approval | TDI Approval | Test Report Number | Specification Type |
|--------------|-------------|----------------|-----------|--------|---------------|-------------------------------|----------------------|---------------------------|------------------|--------------|--------------------|--------------------|
| Sliding Door | Standard | 160-175 | 72 x 80 | R-PG25 | E3 | .13 | 3.75 | +25/-25 | N/A | N/A | B7898.01 | Standard-AAMA 101 |
| Sliding Door | Standard | 160-175 | 144 x 96 | R-PG20 | E5 | .06 | 3.00 | +20/-20 | N/A | N/A | B7928.01 | Standard-AAMA 101 |
| Sliding Door | Standard | 160-175 | 192 x 82 | R-PG20 | E5 | .24 | 3.00 | +20/-20 | N/A | N/A | B9705.01 | Standard-AAMA 101 |
| Sliding Door | Standard | 160-175 | 120 x 80 | R-PG20 | E5 | .17 | 3.00 | +20/-20 | N/A | N/A | D2900.01 | Standard-AAMA 101 |
| Sliding Door | Standard | 160-175 | 192 x 96 | R-PG15 | E5 | .03 | 2.86 | +15/-15 | N/A | N/A | J2439.02 | Standard-AAMA 101 |

TEST REPORTS ARE AVAILABLE UPON REQUEST

All units tested in accordance with AAMA/WDA/CSA 101/I.S.2, and include a welded corner test, for which all units either met or exceeded the standards, and a deglazing test, for which all units either met or exceeded the standards.

- 1) Sizes are certified up to and including the sizes listed.
- 2) Air infiltration is based upon static pressure of 1.57 psf (25 mph). Air infiltration shall not exceed 0.3 standard cubic feet per minute (scfm) per square foot.
- 3) The minimum water resistance is 2.86 psf for an entry level R15 water rating, 3.75 psf for an entry level LC25 water rating, and 4.50 psf for an entry level C30 water rating.
- 4) The minimum structural test pressure is 22.5 psf for an entry level R15 structural rating, 37.5 psf for an entry level LC25 structural rating, and 45.0 psf for an entry level C30 structural rating.

Notes:

SPECIAL MANUFACTURING REQUIREMENTS (FOR EXAMPLE: REINFORCEMENT STRENGTH, GLASS STRENGTH, ETC.) MAY BE NECESSARY TO MEET THE DESIGN PRESSURE LISTED.

PLEASE SPECIFY DESIGN PRESSURE REQUIRED WHERE APPLICABLE.

PLEASE CONSULT YOUR CUSTOMER SERVICE REPRESENTATIVE FOR AVAILABILITY OF SIZES. FACTORS SUCH AS HARDWARE RELIABILITY, SHIPPING, CONSISTENCY IN OPERATING FORCE AND SECURING THE UNIT PROPERLY MAY LIMIT THE UNIT SIZE.