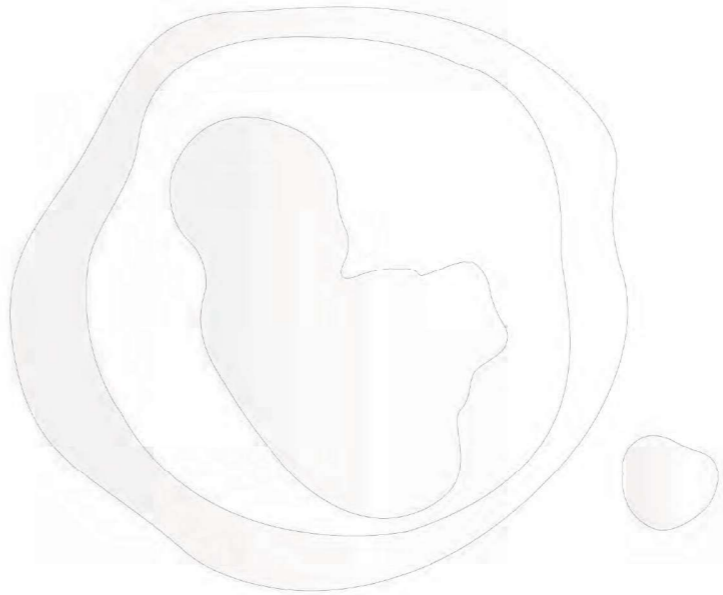


Stock code[300314]



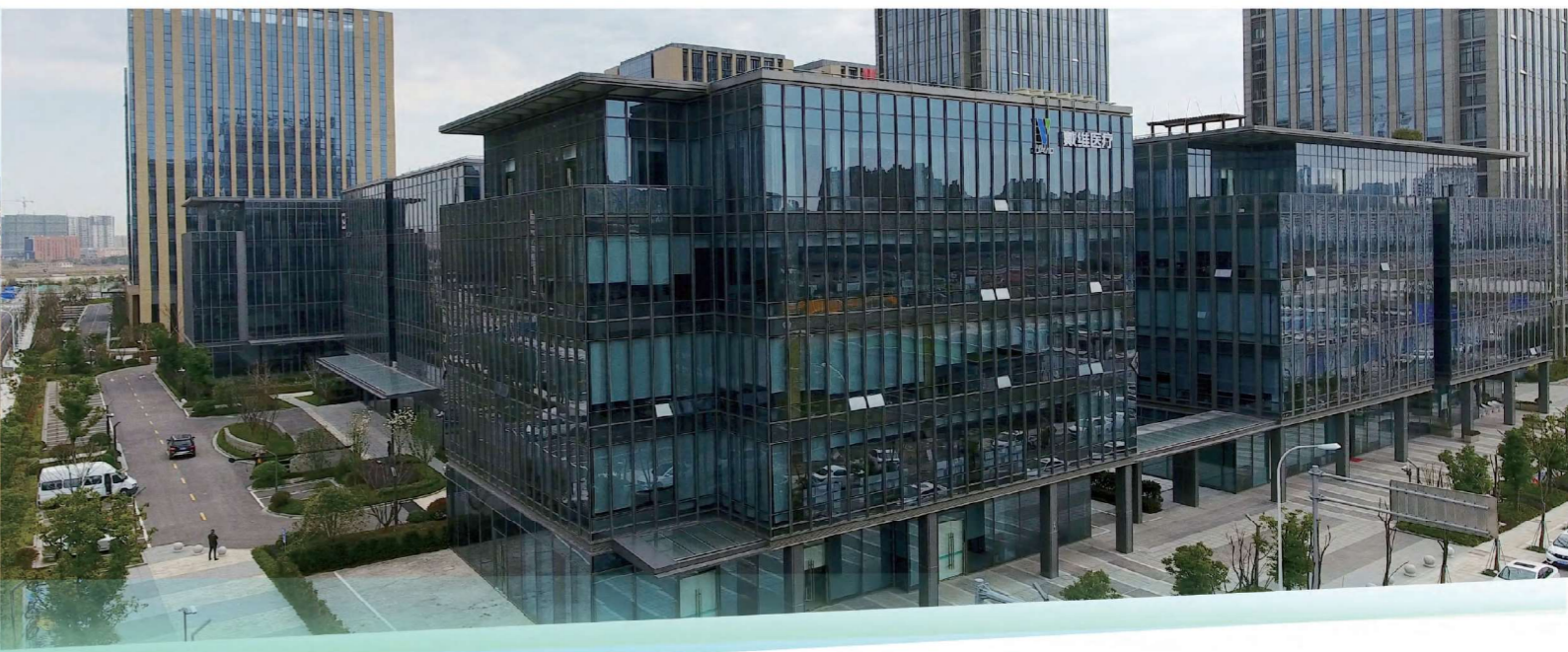
Endless Love To Guard The New Life Safe



 Ningbo David Medical Device Co.,Ltd	Sales center: Bldg No.5 Ningbo Smart Park, #98 Chuangyuan Rd, Hi-tech Zone, Ningbo, China		
	Tel: 0086-574-8780 0008 8780 0007		Fax: 0086-574-8780 3714
	E-mail: sales@nbdavid.com	Web.: www.nbdavid.com	P.C.: 315048



Specifications are changed without notice for performance improvement. Printed date: Jun 2021 Version No.: 3



About DAVID

30+ years
of development

80+ patents

40 global agents

100 national markets range

Ningbo David Medical Device Co., Ltd ("David Medical") was founded in 1992 which is a national high and new technology enterprise who specializes in the development of production and distribution of medical facilities. The main products of the company are: Infant Incubator, Infant Radiant Warmer, Neonate Billirubin Phototherapy Equipment, Neonatal Respiratory Emergency Equipment, etc.

With nearly 30 years' development and growth, David Medical has already acted as the professional manufacturer of Infant Incubator and Infant care equipment, has been successfully listed on GEM

Shenzhen Stock Exchange (stock code:300314) as the first domestic medical device industry infant care equipment segment.

We have already built up a complete quality security system, and become one of the first 5 enterprises who have gained the ISO9000 international quality management system certificate in medical device industry. With high quality product and service provider, "David" brand has established a good reputation in the industry worldwide, products throughout the world more than 100 countries and regions. Domestic market share is among the best, in

the development and application of technology in a leading position.

In the future, our company will always follow the founder Mr. Chen Yunqin's enterprise creed: "Never try to earn the short term interest by sacrificing the long term development". Also through continuous innovation, with strict, efficient and solid style, David Medical will achieve the goal of "Become a world-renowned, leading domestic professional manufacturer of infant care equipment" one day.

COMPANY TENET

For the user: Provide high quality products and service, win the greatest value investment.

For the society: Service people, extend life expectancy; For the shareholders: Offer high return;

For the employees: Provide space for development, fulfill the employee potential, improve the quality of work and life.

MANAGEMENT PHILOSOPHY

Innovative & Initiative
High Quality & Considerable Quantity
Delight working atmosphere making
harmonious development

1st Infant Care Medical Equip. Industry
listed on the domestic Stock Exchange

CORE VALUES

Sense of social responsibility; Quality first;
Science and technology are the base;
Honesty and Integrity;
Profits- earn benefit from the work servicing people.



COMPANY AREA

QUALITY POLICY

Safe & Effective, Innovative & Initiative,
High Quality & Considerable Quantity.






01 INFANT CARE





TI-2100B

TRANSPORT INCUBATOR

- 8.8-inch LCD color touch screen;
- Two temperature control modes: Air mode and Baby mode;
- Multiple power supply: AC power, DC power and battery;
- Multifunctional trolley: height-adjustable, shock-absorbing, locking;
- Humidity control function to adjust the humidity in the baby compartment according to clinical needs;
- >37°C temperature set function;
- Double wall hood with side door so that the bassinet can be pulled out;
- With oxygen cylinder and oxygen supply configuration;
- Observation lamp;
- Low noise DC motor;
- Optional configuration: oxygen control system, ambulance trolley (JH-I/II/III), trolley platform (DJ-I);
- Monitoring system (optional):**
-  Masimo SpO₂ pulse oximetry function to measure blood oxygen and pulse effectively during motion and low perfusion* ;
- Hemoglobin monitoring function can help clinicians evaluate the patient's infusion status (PVI) and Non-invasive, continuous measurement of methemoglobin (SpMet) in the blood.

TI-2000

TRANSPORT INCUBATOR

- Air mode and baby mode controlled by micro-computer;
- Three power supply modes: AC power, DC power and battery, DC 12V or DC 24V Power on the ambulance;
- Set temperature, air temperature, baby temperature and internal battery capacity can be displayed separately;
- Multiple failure alarm indications;
- Double wall hood with side door so that the bassinet can be pulled out;
- Functions of trolley: height adjustment, damping and lock;
- With Oxygen cylinder and Oxygen supply configuration;
- Observation lamp;
- Low noise DC motor;
- Optional configuration: >37°C temperature set function, ambulance type trolley.



*«Performance of Three New-Generation Pulse Oximeters during Motion and Low Perfusion in Volunteers.» Shah N., Ragaswamy H.B., Govindugari K., Estanol L. J Clin Anesth. 2012 Aug;24(5):385-91.

YP-2200B

INFANT INCUBATOR

Dual LCD screen, with 12.1-inch LCD color touch screen and 5.6-inch LCD color screen, can be achieved by simple click;
Three control modes: air mode, baby mode and family care mode;
Humidity and oxygen concentration control system;
Electronic bassinet tilting mechanism, adjust the angle more gently;
The height of whole unit can be adjusted;
Independent over-temperature protection system, multiple failure alarm indications to provide multiple safety protection;
Low noise DC motor;
RS-232 connector to support data transmission;
Optional configuration: weighing system, camera, observation lamp, environmental temperature and humidity monitoring;

Monitoring system (optional):

Masimo SpO₂ pulse oximetry function to measure blood oxygen and pulse effectively during motion and low perfusion* ;
Hemoglobin monitoring function can help clinicians evaluate the patient's infusion status (PVI) and Non-invasive, continuous measurement of methemoglobin (SpMet) in the blood;
Masimo CO₂ monitoring function can providing a variety of measurement methods, real-time and accurate monitoring of CO₂ concentration;
Professional ECG algorithm, suitable for monitoring the 3-lead (standard configuration) and 5-lead (optional configuration) ECG waveform and heart rate;
Blood pressure technology can providing dual overvoltage protection for hardware and software and ensure accurate measurement of neonatal blood pressure parameters.



YP-800C

INFANT INCUBATOR

9-inch LCD color touch screen;
Two temperature control modes: air mode and baby mode;
Double skin temperature sensor monitoring system effectively reduces the temperature fluctuation to keep a uniform bed temperature;
Humidity and oxygen concentration control system;
Masimo SpO₂ pulse oximetry function to measure blood oxygen and pulse effectively during motion and low perfusion* (optional);
Inclination of the bassinet is adjustable steplessly for clinical care;
Double wall hood, automatic air curtain to reduce heat loss and keep the air temperature constant;
Dovetail shape column from both sides for installing more medical devices;
Double insurance design of the front door, double protection to avoid accidental opening of the front door;
Independent over-temperature protection system, multiple failure alarm indications to provide multiple safety protection;
Frequency conversion DC motor effectively reduces the noise in the cabin, and provides a comfortable treatment environment (≤ 45 dB);
Built-in weighing system to conveniently measure the weight of children and monitor the trend of weight changes (optional);
Panel damping system, panels fall silently without holding (optional);
The camera can perform image shooting and video recording for clinical review (optional);
RS-232 connector to support data transmission.



**Performance of Three New-Generation Pulse Oximeters during Motion and Low Perfusion in Volunteers.> Shah N., Regaswamy H.B., Govindugari K., Estanol L. J Clin Anesth. 2012 Aug;24(5):385-91.

**Performance of Three New-Generation Pulse Oximeters during Motion and Low Perfusion in Volunteers.> Shah N., Regaswamy H.B., Govindugari K., Estanol L. J Clin Anesth. 2012 Aug;24(5):385-91.

YP-3000

INFANT INCUBATOR

The full-featured incubator converts from a incubator to a radiant warmer;

- Alarm for conversion failure;
- Large color LCD screen;
- Baby bassinet rotates 360° from both sides;
- Guide rail column in dovetail shape;
- Designed with the air circulation system which has air outlets in front and back;
- X-ray cassette under the bassinet;
- Step-less adjustable inclination of bassinet;
- Stored data displayed in curve with Cartesian coordinate axis;
- The height of whole unit can be adjusted;
- Self-check function with multiple alarm indications;
- Low noise DC motor;
- RS-232 connector;
- Configuration with observation lamp;
- Optional Configuration: Weighing system.



YP-2008

INFANT INCUBATOR

Two control modes: Air mode and baby mode controlled by micro-computer;

- The information can be recorded and checked by the separate LCD display screen;
- Humidity and oxygen concentration display and servo control;
- >37°C temperature set function;
- The air circle with outlet in both front and back;
- Brushless DC motor with low noise;
- Operating doors on three sides;
- X-ray cassette under the bassinet;
- Integrated sensor module and drawer type integrated water reservoir;
- Inclination of bassinet is adjustable;
- The height of whole unit can be adjusted;
- Failure alarm indications;
- Low noise DC motor;
- RS-232 connector;
- Optional Configuration: Weighing system, Disposable skin temperature sensor, and Examination lamp.





YP-2000

INFANT INCUBATOR

Air mode and baby mode servo-controlled by micro-computer;
 The information can be stored, consulted and indicated by the LCD display screen;
 Humidity concentration control and oxygen concentration control system;
 >37°C temperature set function;
 Plastic mould with streamlined body, air circulation system in the way of air outlet from front and back;
 Both of the front and back side have access door;
 X-ray cassette under the bassinet;
 Embedded integrated sensor box and drawer-type water reservoir;
 The whole water reservoir can adopt high temperature and high pressure disinfection;
 Inclination of the bassinet is adjustable;
 The height of whole unit can be adjusted;
 Multiple failure alarm indications;
 RS-232 connector;
 Low noise DC motor;
 Optional configuration: Weighing system, monitor shelf.



YP-90AC

INFANT INCUBATOR

Air mode and baby mode controlled by micro-computer;
 Set temperature, air temperature, baby temperature are displayed separately;
 Humidity concentration system;
 Inclination of bassinet is adjustable;
 Failure alarm indications;
 RS-232 connector;
 Low noise DC motor;
 Oxygen input interface;
 Configured with fixed neonate bilirubin phototherapy equipment model:
 XHZ-90 with blue fluorescent lamp as the upper light source; fixed neonate bilirubin phototherapy equipment with SMD LED blue lights under the bassinet;
 Optional configuration: >37°C temperature override mode, vertical height adjustment cabinet (VHA stand), weighing system, disposable skin temperature sensor, SpO₂, neonate bilirubin phototherapy equipment model: XHZ-90L with blue LED as upper light source.



YP-90A

INFANT INCUBATOR

Air mode and baby mode servo-controlled by micro-computer;
 Set temperature, air temperature, baby temperature are displayed separately;
 Natural air flow humidity;
 Inclination of the bassinet is adjustable;
 Multiple failure alarm indications;
 RS-232 connector;
 Low noise DC motor;
 The oxygen inlet;
 Optional configuration: >37°C temperature set function, baby scale, vertical height adjustment, cabinet, SpO₂.



YP-910

INFANT INCUBATOR

Air mode and baby mode servo-controlled by micro-computer;
Humidity concentration display system;
Set temperature, air temperature, baby temperature, humidity concentration are displayed separately;
>37°C temperature set function;
Inclination of the bassinet is adjustable;
Multiple failure alarm indications;
Embedded integrated sensor box and drawer-type water reservoir;
Double wall hood, automatic air circulation device;
RS-232 connector;
Low noise DC motor;
Optional configuration: Fixed neonate bilirubin phototherapy equipment, Vertical Height Adjustment cabinet (VHA stand), Weighing system, disposable skin temperature sensor, SpO₂.



YP-920

INFANT INCUBATOR

Air mode and baby mode servo-controlled by micro-computer;
Humidity concentration control system;
Set temperature, air temperature, baby temperature, humidity concentration are displayed separately;
>37°C temperature set function;
Inclination of the bassinet is adjustable;
Multiple failure alarm indications;
Embedded integrated sensor box and drawer-type water reservoir;
Double wall hood, automatic air circulation device;
RS-232 connector;
Low noise DC motor;
Optional configuration: Fixed neonate bilirubin phototherapy equipment, Vertical Height Adjustment cabinet (VHA stand), Weighing system, disposable skin temperature sensor, SpO₂.



YP-930

INFANT INCUBATOR

Air mode and baby mode servo-controlled by micro-computer;
Humidity concentration control system;
Oxygen concentration display system;
Set temperature, air temperature, baby temperature, humidity concentration and Oxygen concentration are displayed separately;
>37°C temperature set function;
Inclination of the bassinet is adjustable;
Multiple failure alarm indications;
Embedded integrated sensor box and drawer-type water reservoir;
Double wall hood, automatic air circulation device;
RS-232 connector;
Low noise DC motor;
Optional configuration: Fixed neonate bilirubin phototherapy equipment, Vertical Height Adjustment cabinet (VHA stand), Weighing system, disposable skin temperature sensor, SpO₂.



YP-970

INFANT INCUBATOR

Air mode and baby mode servo-controlled by micro-computer;
Humidity concentration control system;
Oxygen concentration control system;
Set temperature, air temperature, baby temperature, humidity concentration and Oxygen concentration are displayed separately;
>37°C temperature set function;
Inclination of the bassinet is adjustable;
Multiple failure alarm indications;
Embedded integrated sensor box and drawer-type water reservoir;
Double wall hood, automatic air circulation device;
RS-232 connector;
Low noise DC motor;
Optional configuration: Fixed neonate bilirubin phototherapy equipment, Vertical Height Adjustment cabinet (VHA stand), Weighing system, disposable skin temperature sensor, SpO₂.



HKN-500AB

INFANT RADIANT WARMER

8-inch LCD color touch screen;
 Three temperature control modes: pre-warm mode, manual mode and baby mode;
 Masimo SpO₂ pulse oximetry function to measure blood oxygen and pulse effectively during motion and low perfusion* (optional);
 The horizontal angle of warmer module is adjustable, which is convenient for clinical care;
 Electric tilting system conveniently adjusts the angle of the bed, and the transition is smoother;
 The transparent panels surrounded bassinet can be turned downward or disassembled;
 Dovetail shape column from both sides for installing more medical devices;
 The lighting is adjustable to reduce the impact of light stimulation on newborns;
 Independent over-temperature protection system, multiple failure alarm indications to provide multiple safety protection;
 APGAR timer;
 Hands-free alarm silence, Non-contact alarm mute function to maintain a clean and quiet nursing environment (optional);
 Bilirubin phototherapy treatment function, LED light source, effective lifespan 50000 hours (optional);
 Low pressure aspiration function, T-piece resuscitation function and air/oxygen blender function;
 Built-in weighing system to conveniently measure the weight of children and monitor the trend of weight changes (optional);
 RS-232 connector to support data transmission.



HKN-93CS

INFANT RADIANT WARMER

9.7-inch LCD color touch screen;
 Three control modes: Pre-warm mode control, manual mode control and baby mode control by micro-computer;
 Masimo SpO₂ pulse oximetry function to measure blood oxygen and pulse effectively during motion and low perfusion*;
 Horizon angle of warmer module and inclination of the bassinet can be adjusted;
 The panels around bassinet can be turned outward and flipped down;
 X-ray cassette under the bassinet;
 APGAR timer and CPR timer;
 Failure alarm indication;
 RS-232 connector to support data transmission;
 Configured with bilirubin phototherapy unit, infant T-piece resuscitator, air oxygen blender / oxygen supply device, Suction Unit (venturi), vertical height adjustment (VHA) system;
 Optional configured: electronic tilting mechanism, weighing system and examination lamp.

*<Performance of Three New-Generation Pulse Oximeters during Motion and Low Perfusion in Volunteers.> Shah N., Ragaswamy H.B., Govindugari K., Estanol L. J Clin Anesth. 2012 Aug;24(5):385-91.

*<Performance of Three New-Generation Pulse Oximeters during Motion and Low Perfusion in Volunteers.> Shah N., Ragaswamy H.B., Govindugari K., Estanol L. J Clin Anesth. 2012 Aug;24(5):385-91.



HKN-93C

INFANT RADIANT WARMER

Three control modes: Pre-warm mode control, manual mode control and baby mode control by micro-computer;
 Set temperature and baby temperature can be displayed separately;
 Masimo SpO₂ pulse oximetry function to measure blood oxygen and pulse effectively during motion and low perfusion*;
 Horizon angle of warmer module and inclination of the bassinet can be adjusted;
 The panels around bassinet can be turned outward and flipped down;
 X-ray cassette under the bassinet;
 APGAR timer;
 Failure alarm indication;
 RS-232 connector;
 Configured with bilirubin phototherapy unit, infant T-piece resuscitator, air oxygen blender / oxygen supply device, suction unit (venturi), masimo pulse oximeter system, vertical height adjustment (VHA) system;
 Optional configured: weighing system.



HKN-93A

INFANT RADIANT WARMER

Pre-warm mode, manual mode and baby mode controlled by micro-computer;
 Set temperature and baby temperature can be displayed separately;
 Timer to count phototherapy caring time;
 Horizontal angle of warmer module can be adjusted;
 Inclination of the bassinet can be adjusted, and the organic glass panels can be turned outward or disassembled;
 Multiple failure alarm indications;
 X-ray cassette is under the bassinet;
 APGAR timer;
 RS-232 connector;
 Configured with LED phototherapy unit, breath resuscitation bag, infant head fixing unit and low pressure suction;
 Optional configuration: vertical height adjustment stand, drawer, weighing system and SpO₂.



HKN-93B

INFANT RADIANT WARMER

Pre-warm mode, manual mode and baby mode controlled by micro-computer;
 Set temperature and baby temperature can be displayed separately;
 Configured with LED Phototherapy unit;
 Timer to count phototherapy caring time;
 Horizontal angle of warmer module can be adjusted;
 Inclination of the bassinet can be adjusted, and the organic glass panels can be turned outward or disassembled;
 Multiple failure alarm indications;
 X-ray cassette is under the bassinet;
 APGAR timer;
 RS-232 connector;
 Optional configuration: vertical height adjustment stand, drawer, weighing system and SpO₂.

* <Performance of Three New-Generation Pulse Oximeters during Motion and Low Perfusion in Volunteers.> Shah N., Ragaswamy H.B., Govindugari K., Estanol L. J Clin Anesth. 2012 Aug;24(5):385-91.



HKN-93

INFANT RADIANT WARMER

Pre-warm mode, manual mode and baby mode controlled by micro-computer;
 Set temperature and baby temperature can be displayed separately;
 Horizontal angle of warmer module can be adjusted;
 Inclination of the bassinet can be adjusted, and the organic glass panels can be turned outward or disassembled;
 Multiple failure alarm indications;
 X-ray cassette is under the bassinet;
 APGAR timer;
 RS-232 connector;
 Optional configuration: vertical height adjustment stand, drawer, weighing system and SpO₂.



HKN-2001

INFANT RADIANT WARMER

Pre-warm mode, manual mode and baby mode controlled by micro-computer;
 LCD display with temperature data storage and curve display function;
 Swiveling Capacity of the warmer module;
 Inclination of the bassinet can be adjusted, and the organic glass panels can be turned outward or disassembled;
 Silicon mattress can be heated with temperature control system;
 Built-in LED phototherapy unit;
 APGAR timer;
 RS-232 connector;
 Multiple failure alarm indications;
 Vertical height adjustment stand, the height of the whole unit can be adjusted.



HKN-9010

INFANT RADIANT WARMER

Pre-warm mode, manual mode and baby mode controlled by micro-computer;
 Set temperature and baby temperature can be displayed separately;
 Horizontal angle of warmer module can be adjusted;
 Inclination of the bassinet can be adjusted, and the organic glass panels can be turned outward or disassembled;
 Multiple failure alarm indications;
 X-ray cassette is under the bassinet;
 APGAR timer;
 RS-232 connector.



HKN-90

INFANT RADIANT WARMER

Pre-warm mode, manual mode and baby mode controlled by micro-computer;
 Set temperature and baby temperature can be displayed separately;
 Horizontal angle of warmer module can be adjusted;
 Inclination of the bassinet can be adjusted, and the organic glass panels can be disassembled ;
 Multiple failure alarm indications;
 APGAR timer;
 RS-232 connector.