

Enid Creek



Access road from Timmins area



Andesite outcrop on west side of property

Inventory of previous work

- Drilling
 - 1957 Tilmac drilled A-1 to A-9
 - 1965 and 1968 Hollinger drills EC-1 to EC-16 and L-1 to L-14
 - 1989 Falco drills 3 holes (EL25 series)
 - 1989 to Present Explorers Alliance drilled from EL25-4 to -13
- Geophysics:
 - 1964 Hollinger runs ground EM
 - 1978 Texasgulf did a mag survey
 - 1989 Falconbridge runs Mag and HLEM over the claims, identifies 0 conductors
 - 2004 Mag and HLEM on NE part of claims

Present Work Done

- All area assessment files acquired and organized
- Holes inventoried for:
 - Name
 - Collar location, azimuth, dip
 - Surveys
 - Rock types
 - Assays
- Surface mapping, historical claim maps georeferenced for missing collar information
- Historical logs entered
- 2D Arcview compilation completed
- Datamine project created
 - West-East sections interpreted
 - Rock units wireframed
 - Mineralized zones wireframed

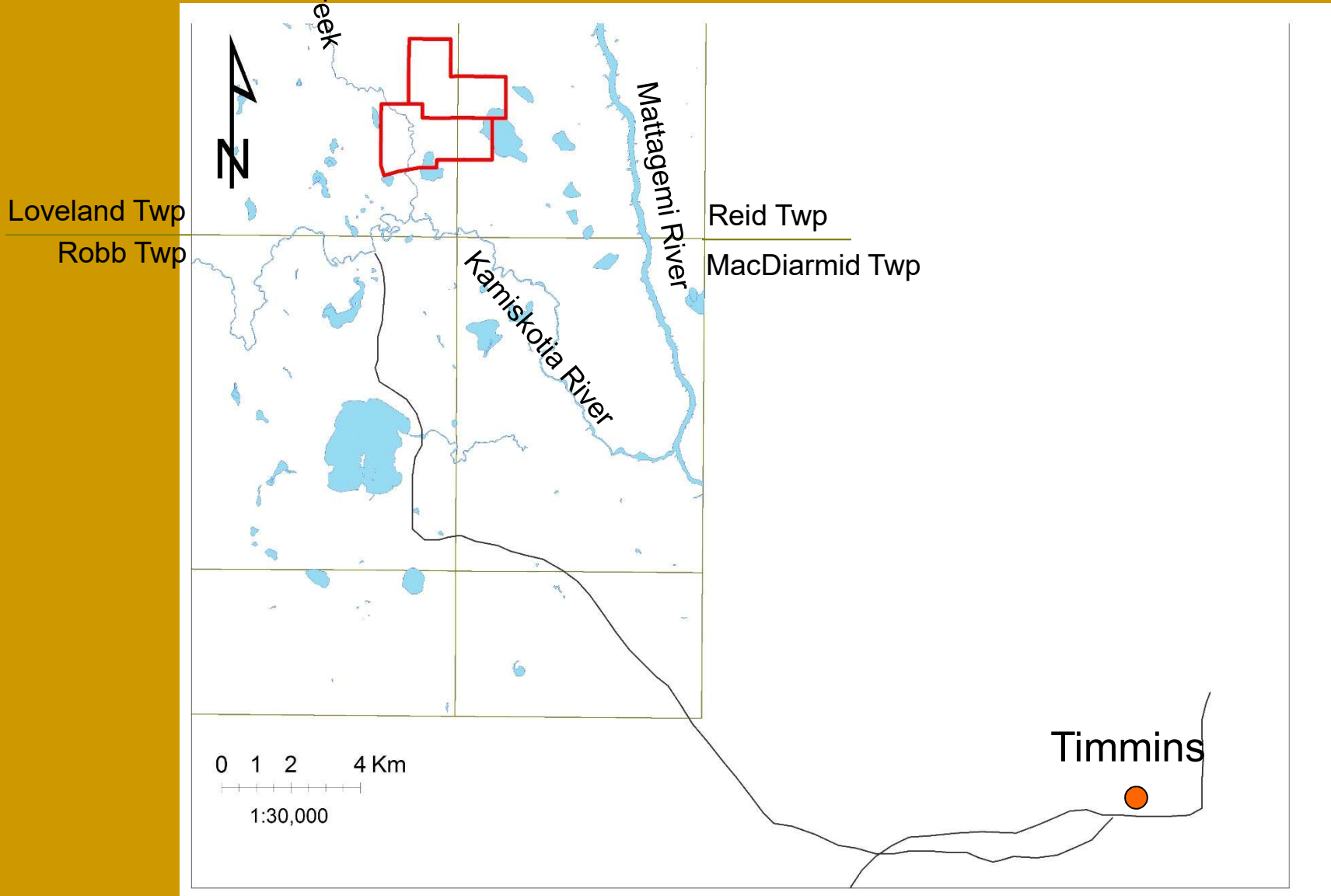
Inventory of holes

- Those with collar locs were converted to NAD83 and a survey file created
- Those without were approximated based on geo-referenced ground maps provided in assessment work
- A datamine collar file and an arcmap bedrock type file were created

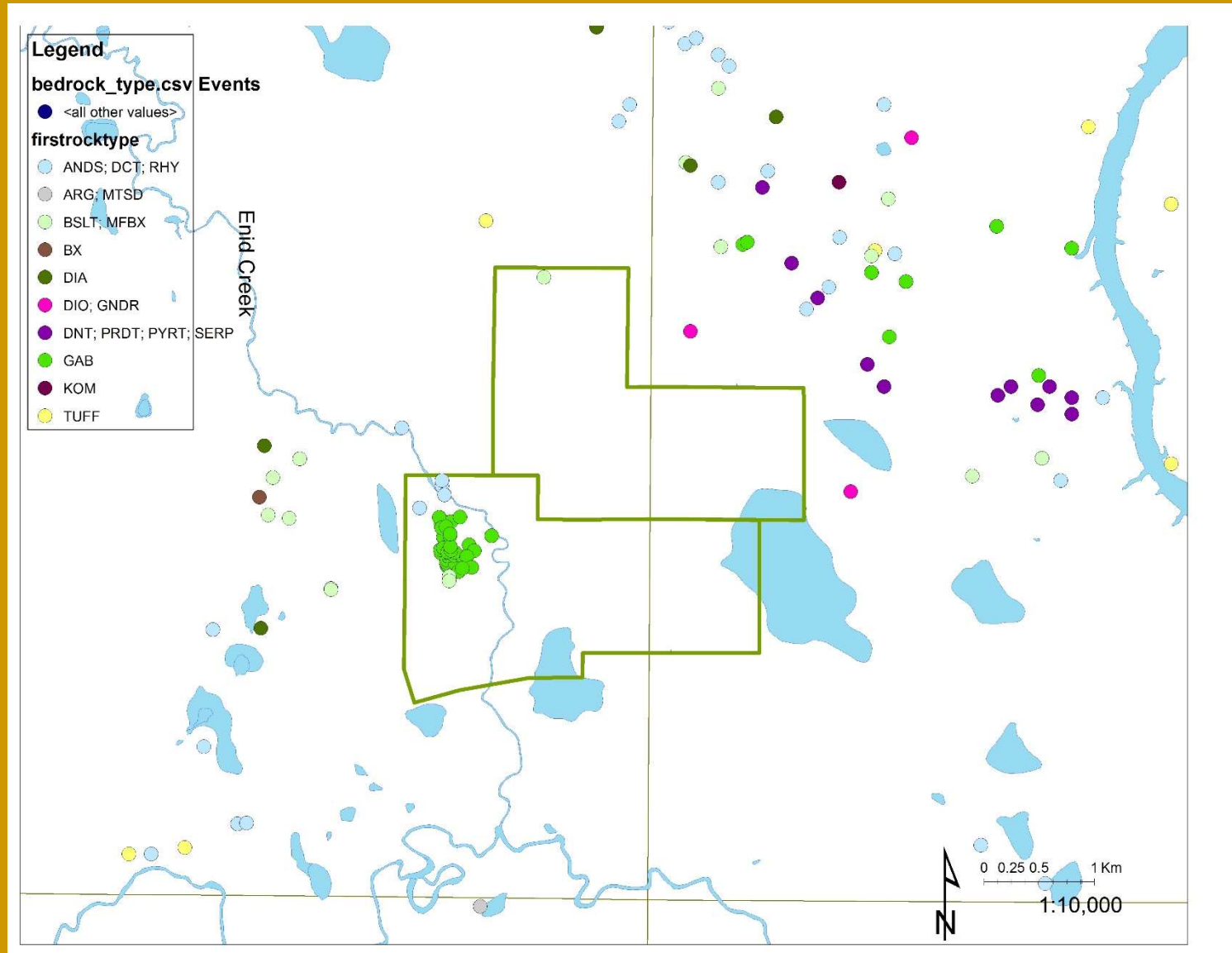
Assays

- All assessment reports with assays were entered and converted to create a .csv
- A lot of historical assessment files have records of samples taken but no assays

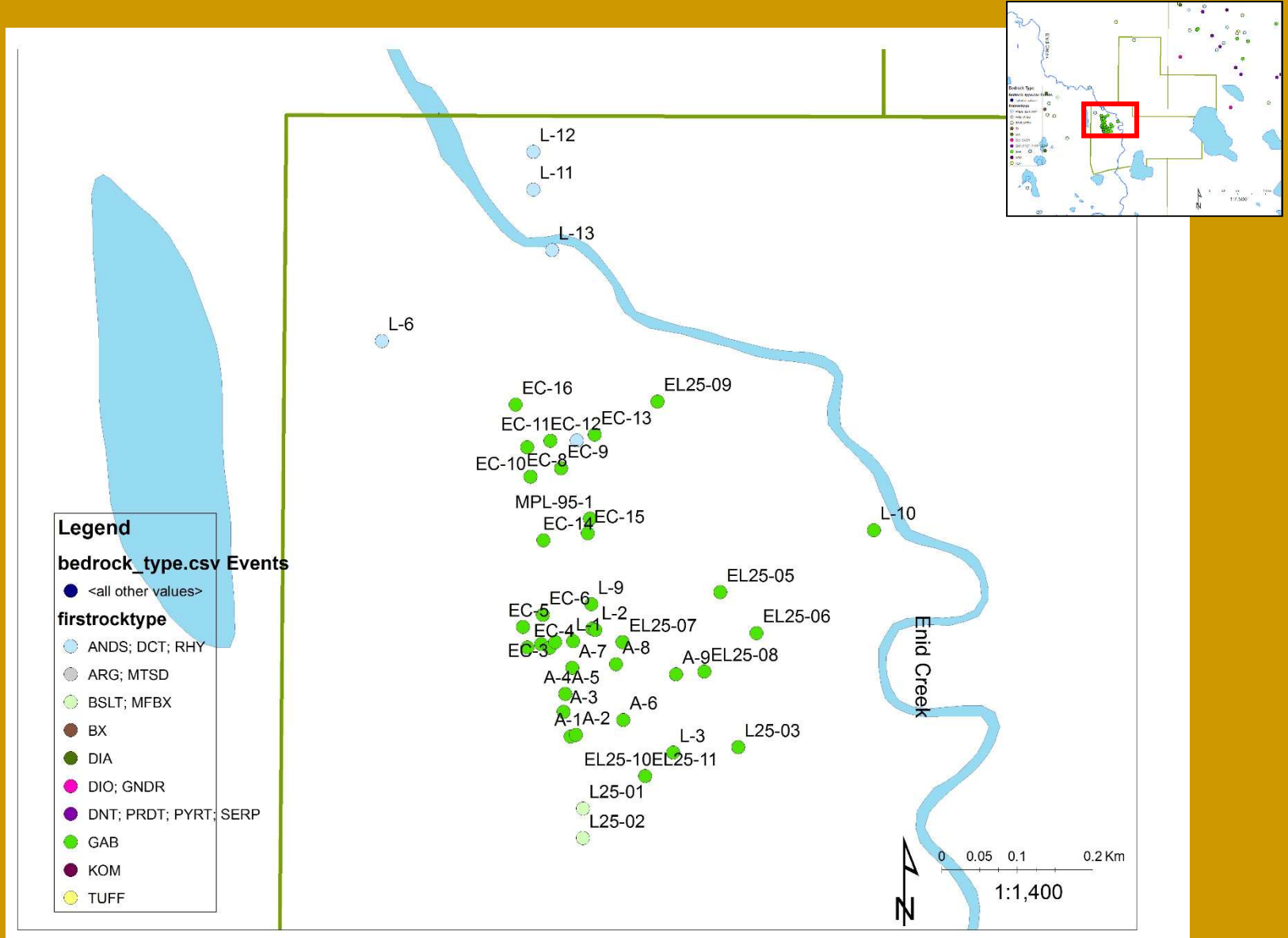
Enid Creek Property Location



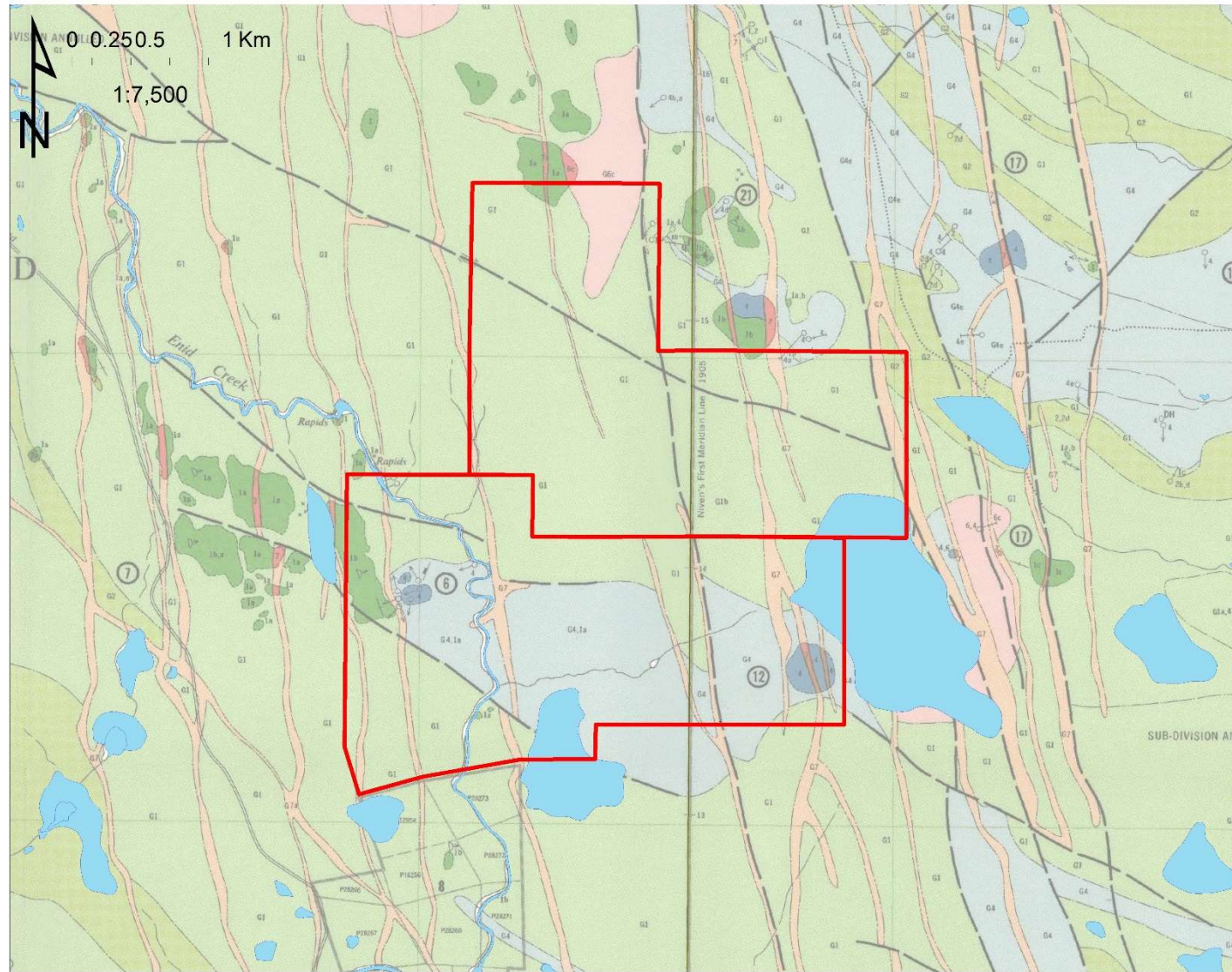
Bedrock Types



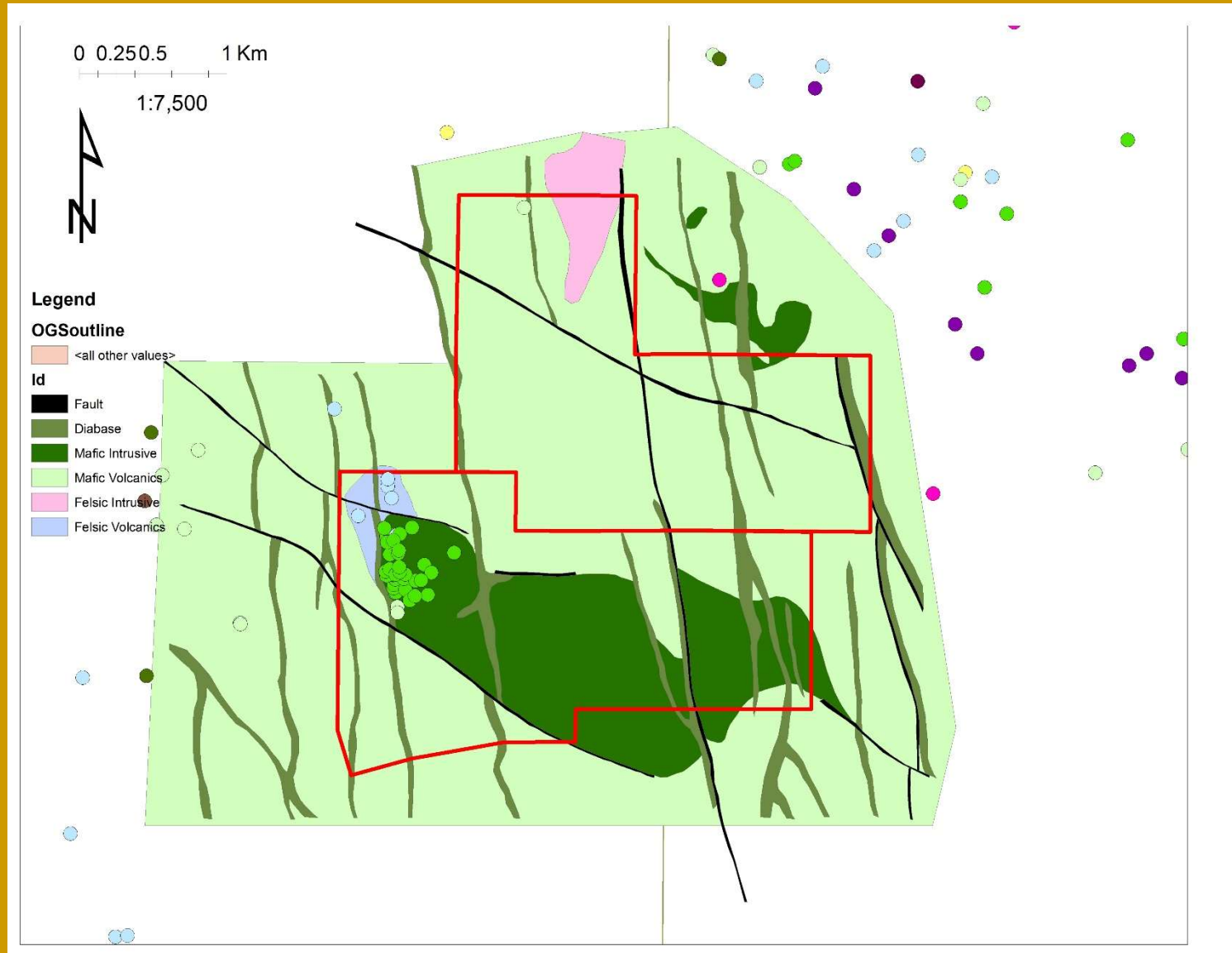
Close-up of Area of Interest



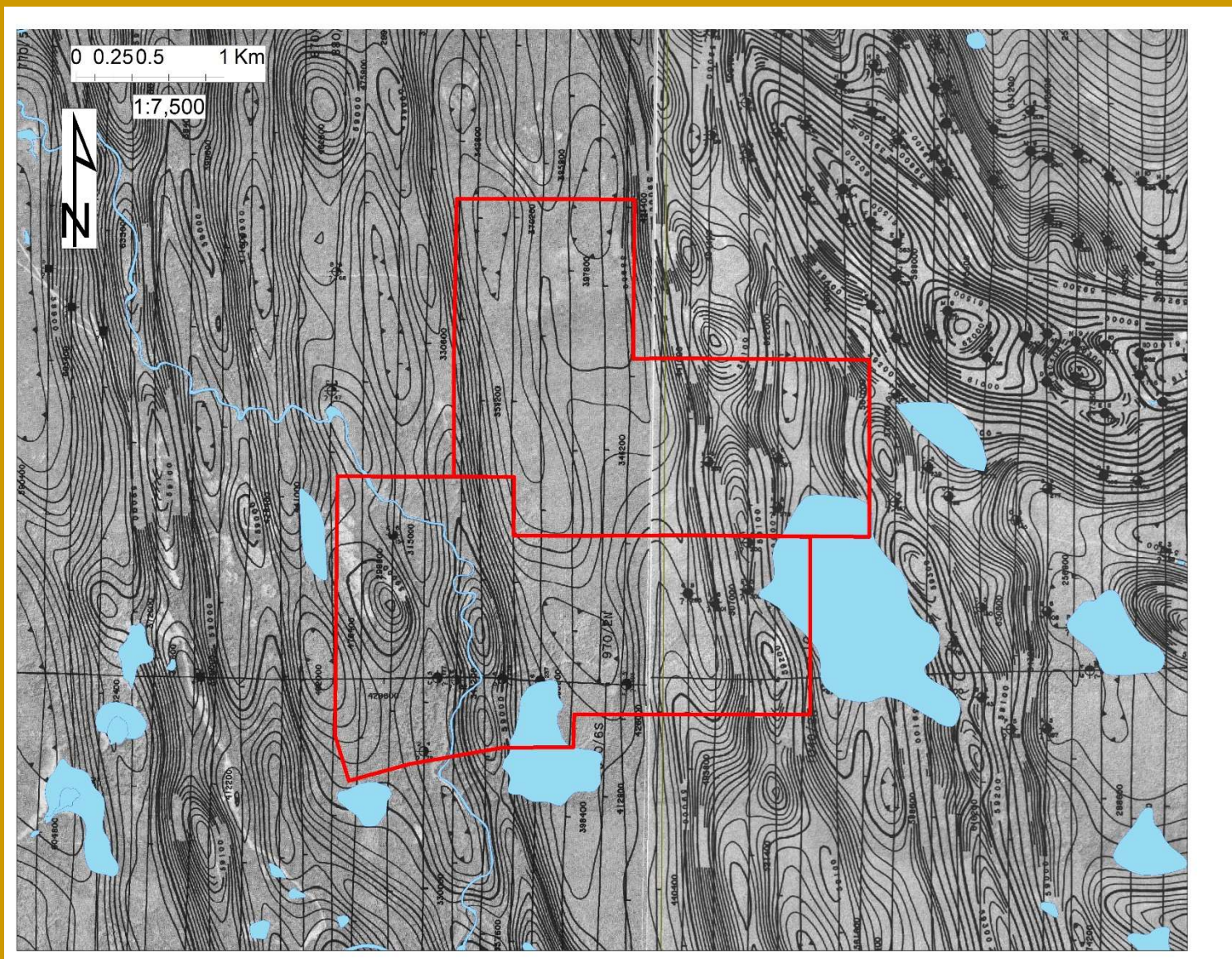
OGS Interpretation



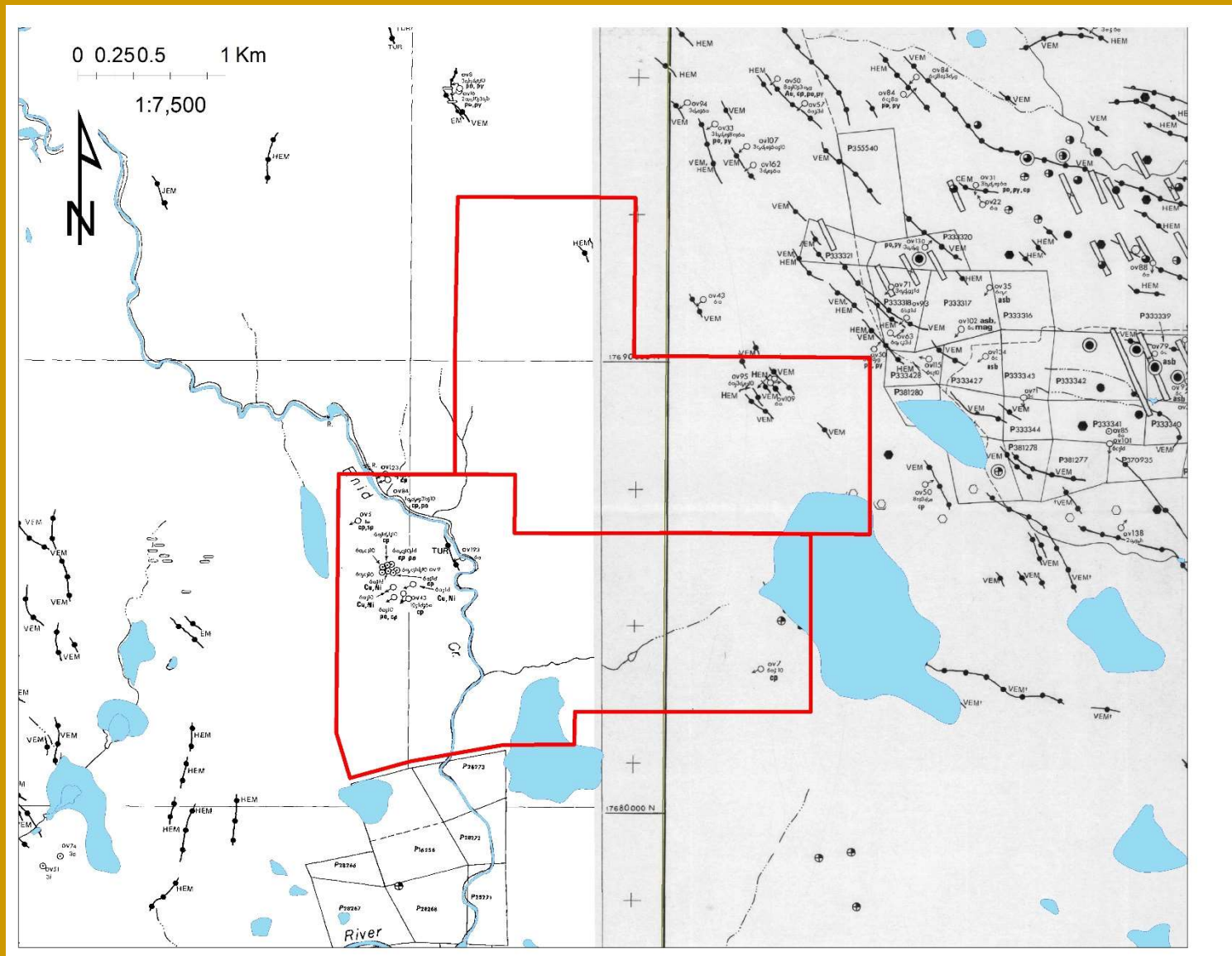
Interpretation



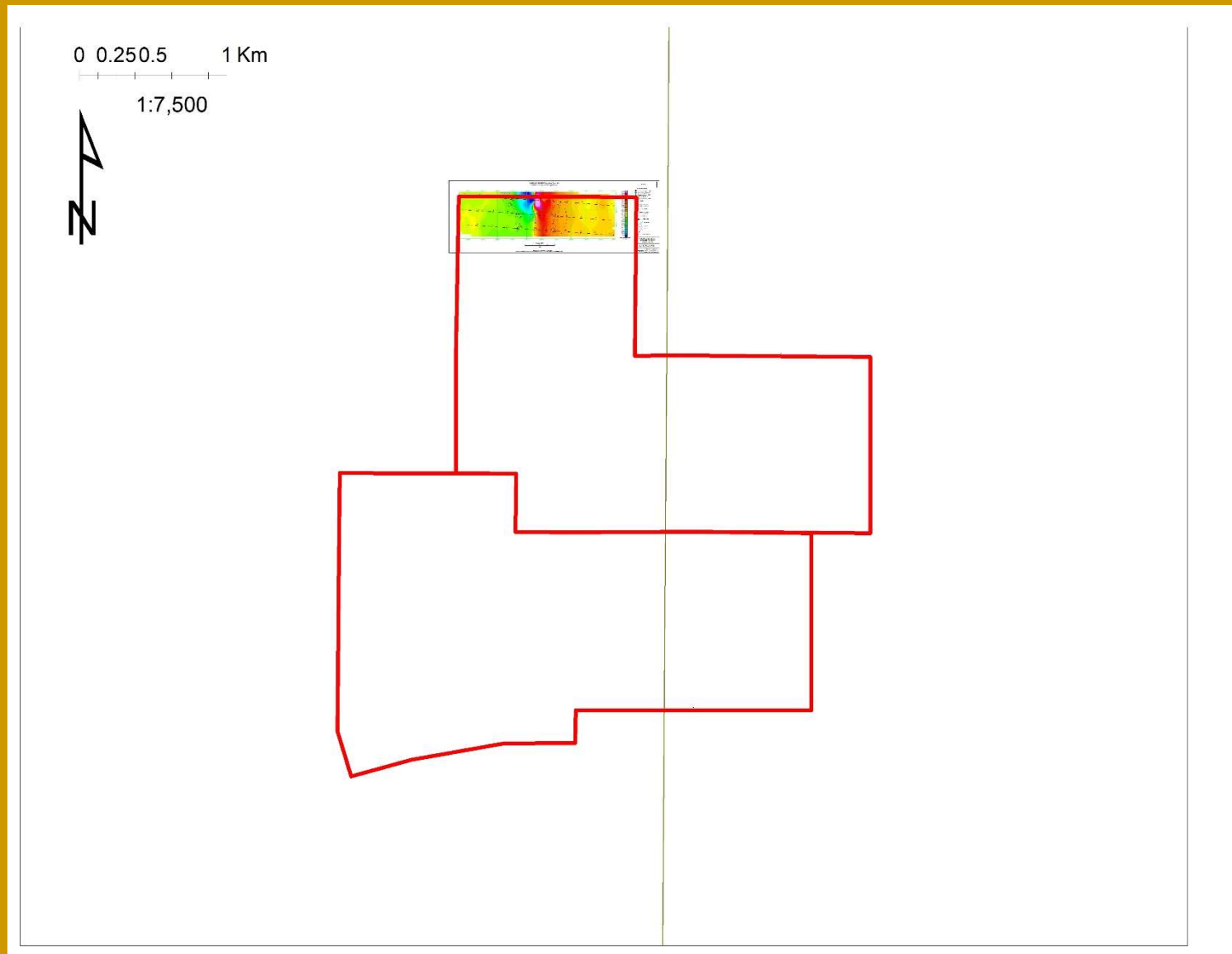
1980 OGS Airborne Magnetics



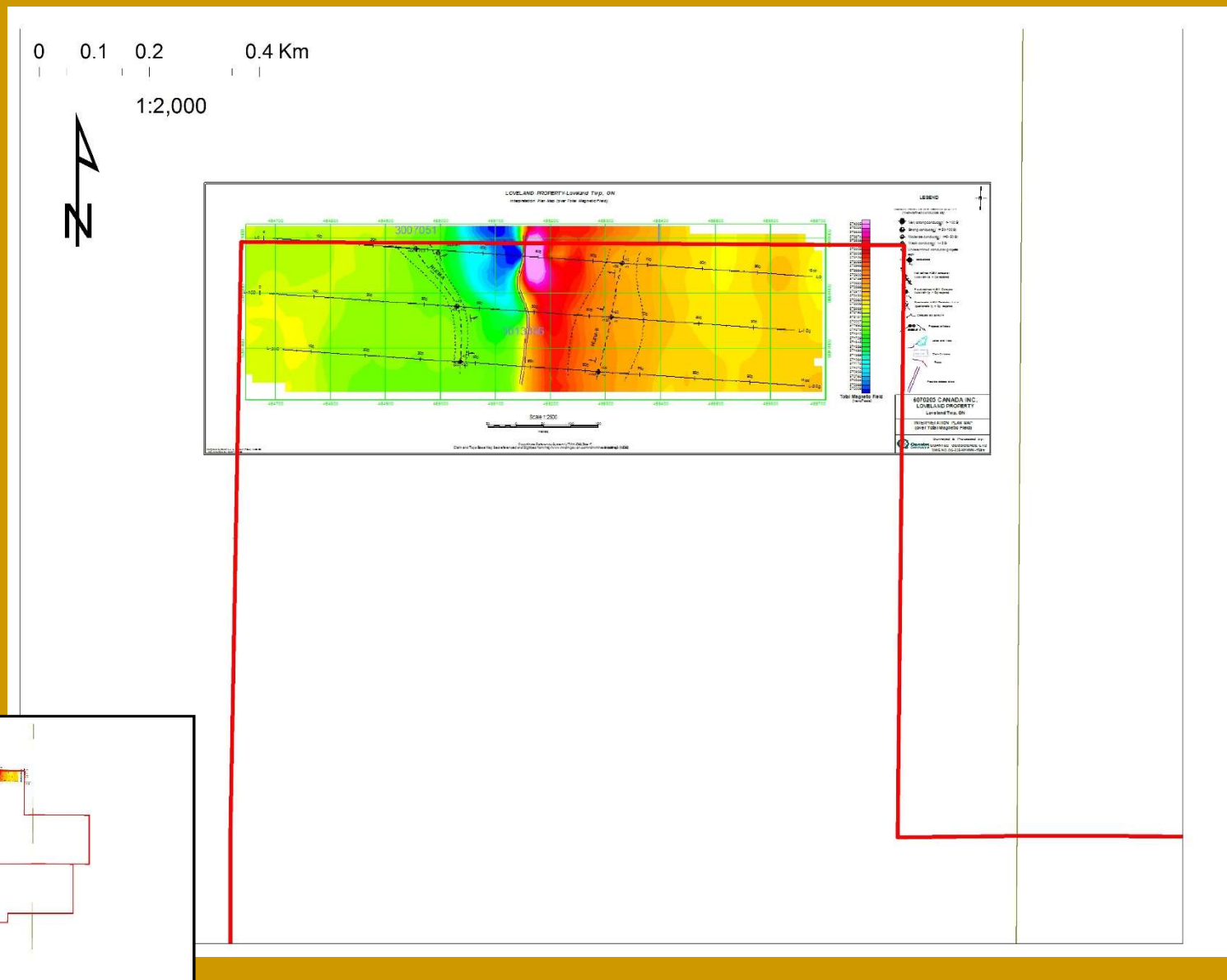
1988 OGS EM Compilation



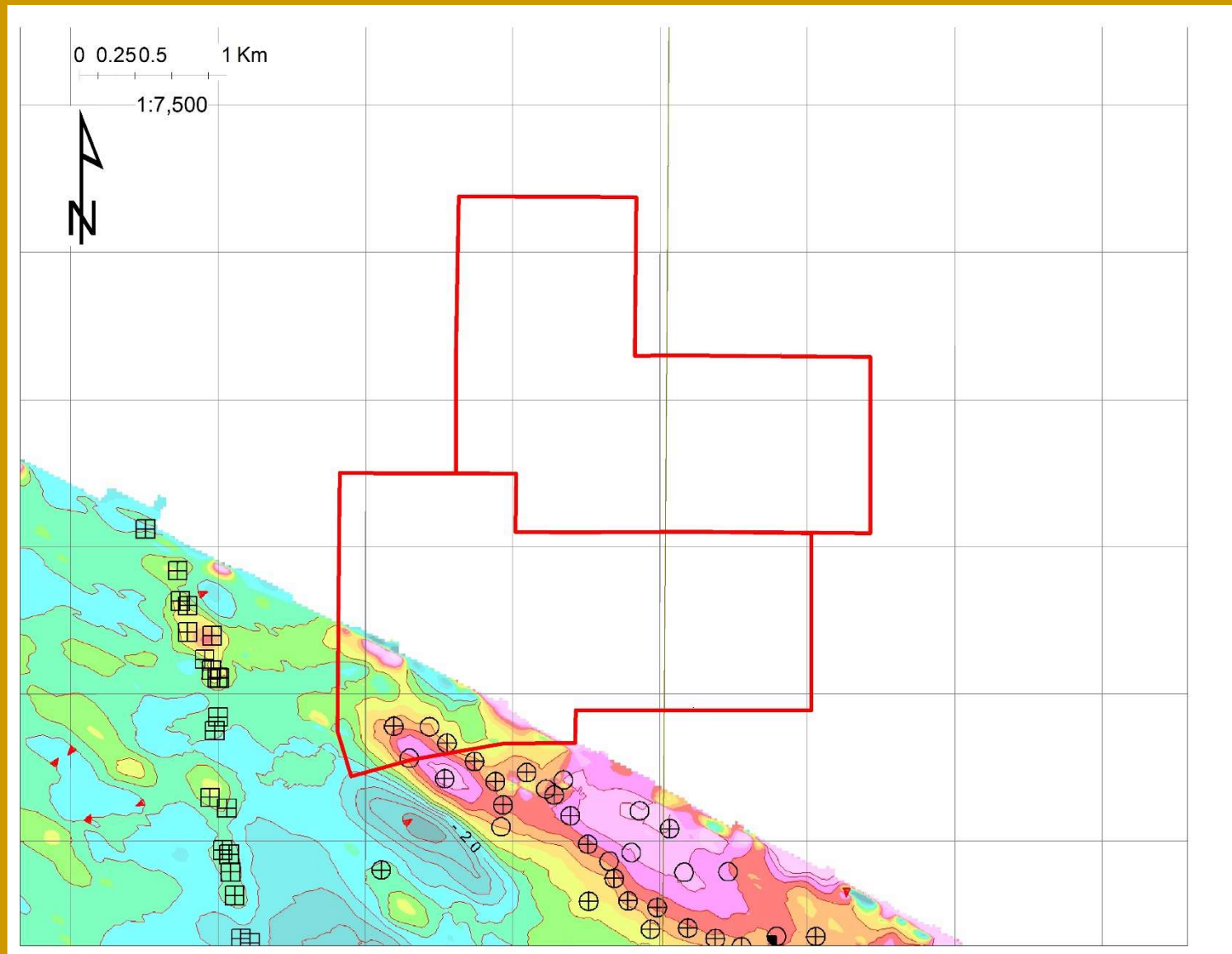
2004 Quantec EM/MAG



2004 Quantec Close-up



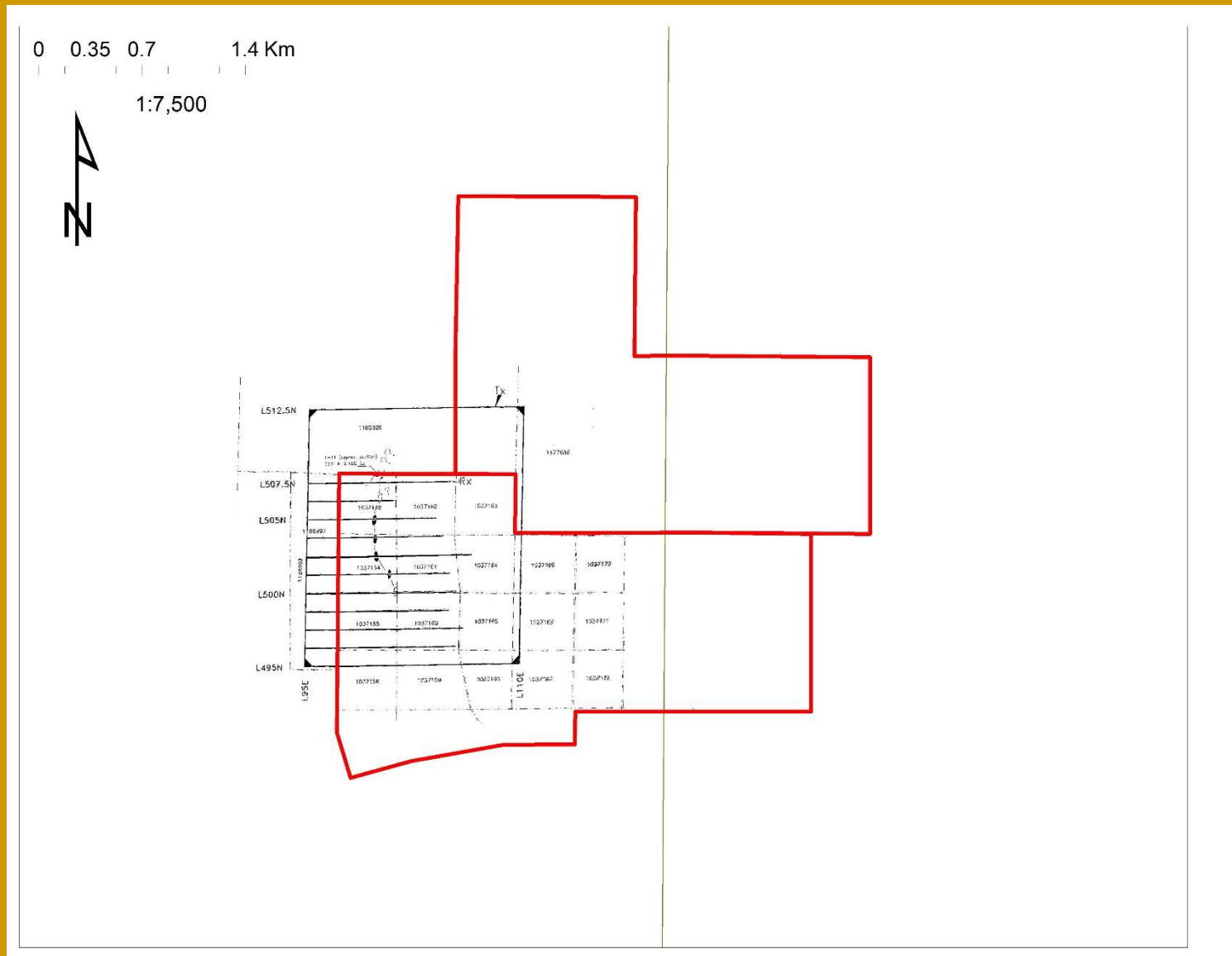
2002 OGS EM-MAG



1994 Ground EM Survey



1995 Ground EM Survey



Gabbro Contact with Diabase

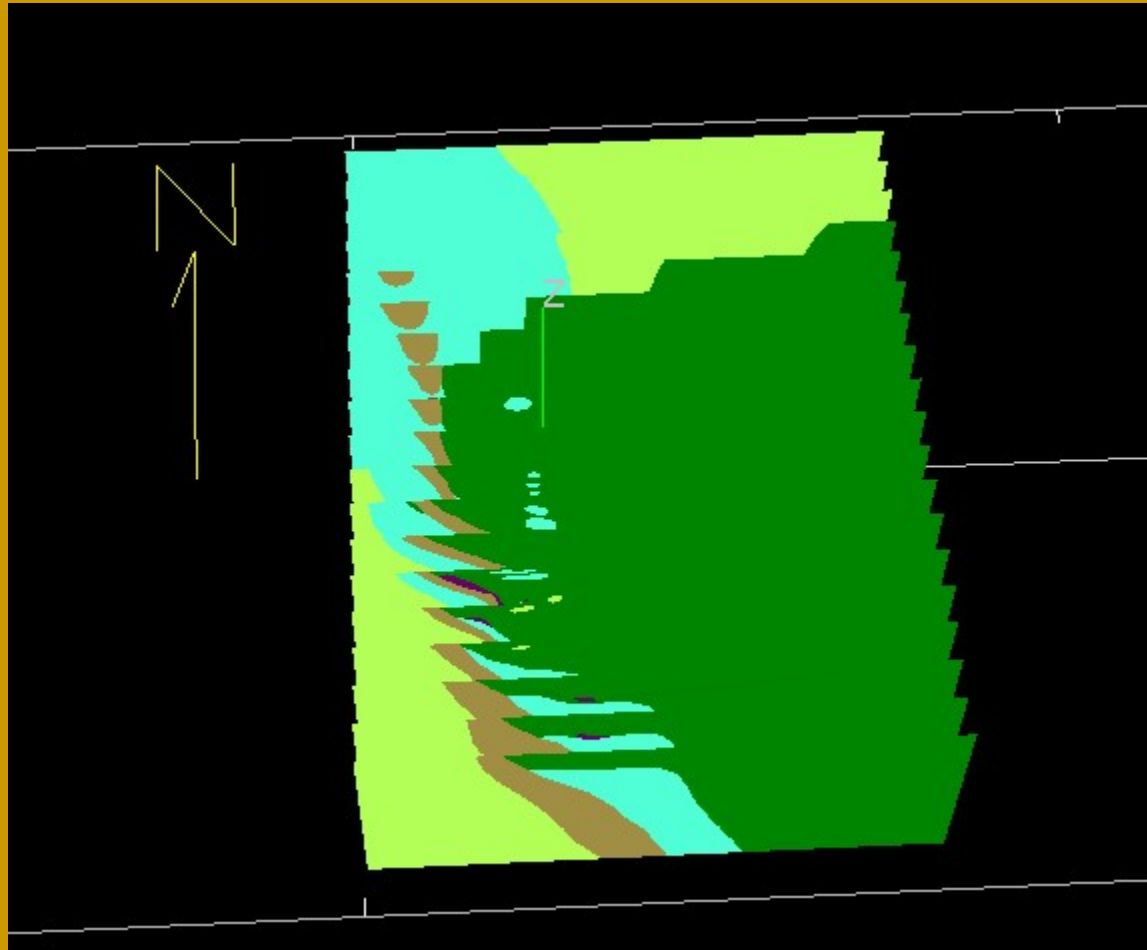
- Contact dips $\sim -37^\circ$ E
- Roughly parallel to the diabase
- There are blocks of andesite and ultramafics (chill?) within the gabbro

Datamine Legend

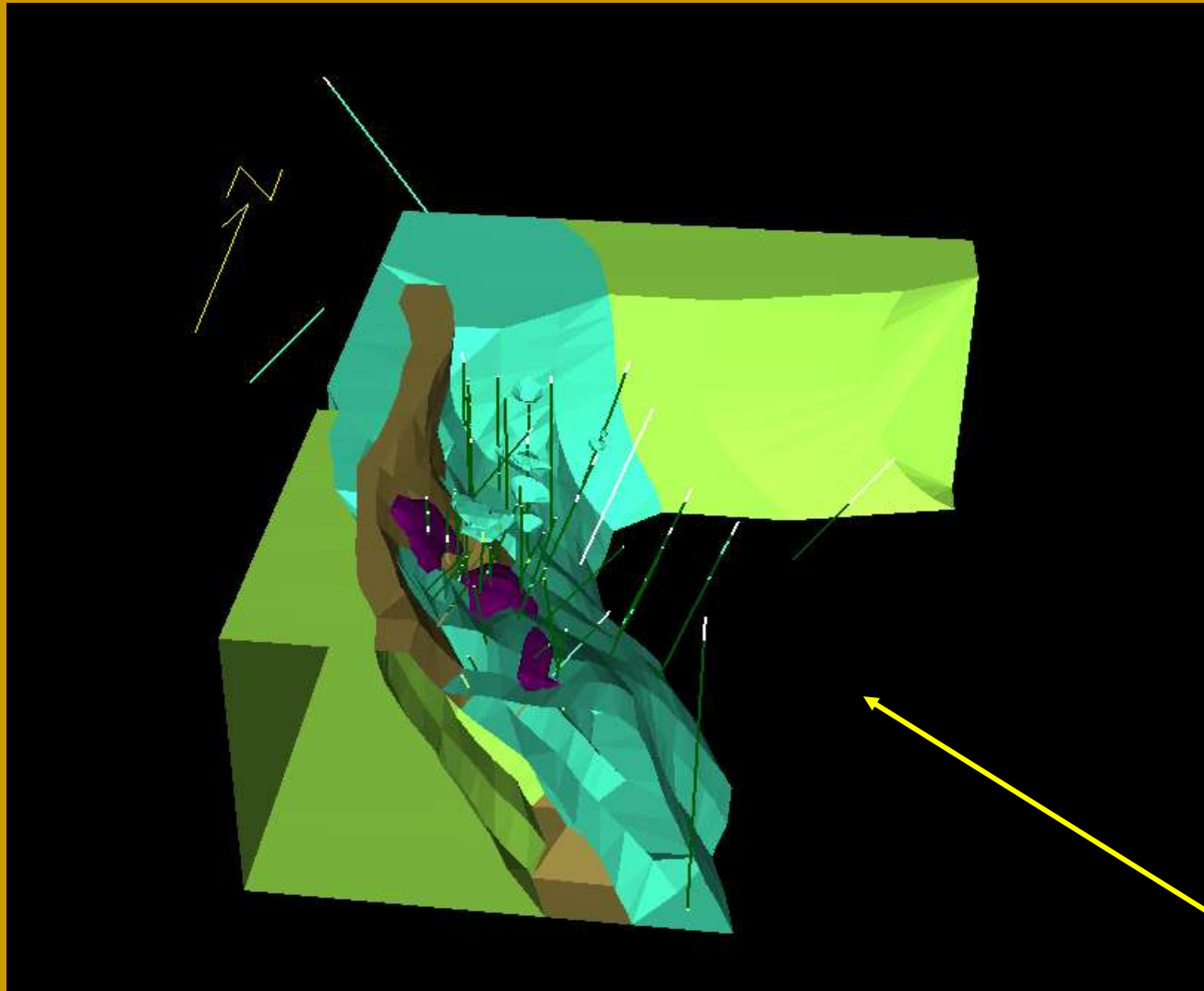
Rock types were examined
and grouped into categories.

	Felsic Volcanics
	Felsic Tuffs
	Felsic Dykes
	Felsic Intrusives
	Mafic Volcanics
	Mafic Dykes
	Mafic Intrusives
	Ultramafic Volcanics
	Ultramafic Intrusives

Sectional Interpretations



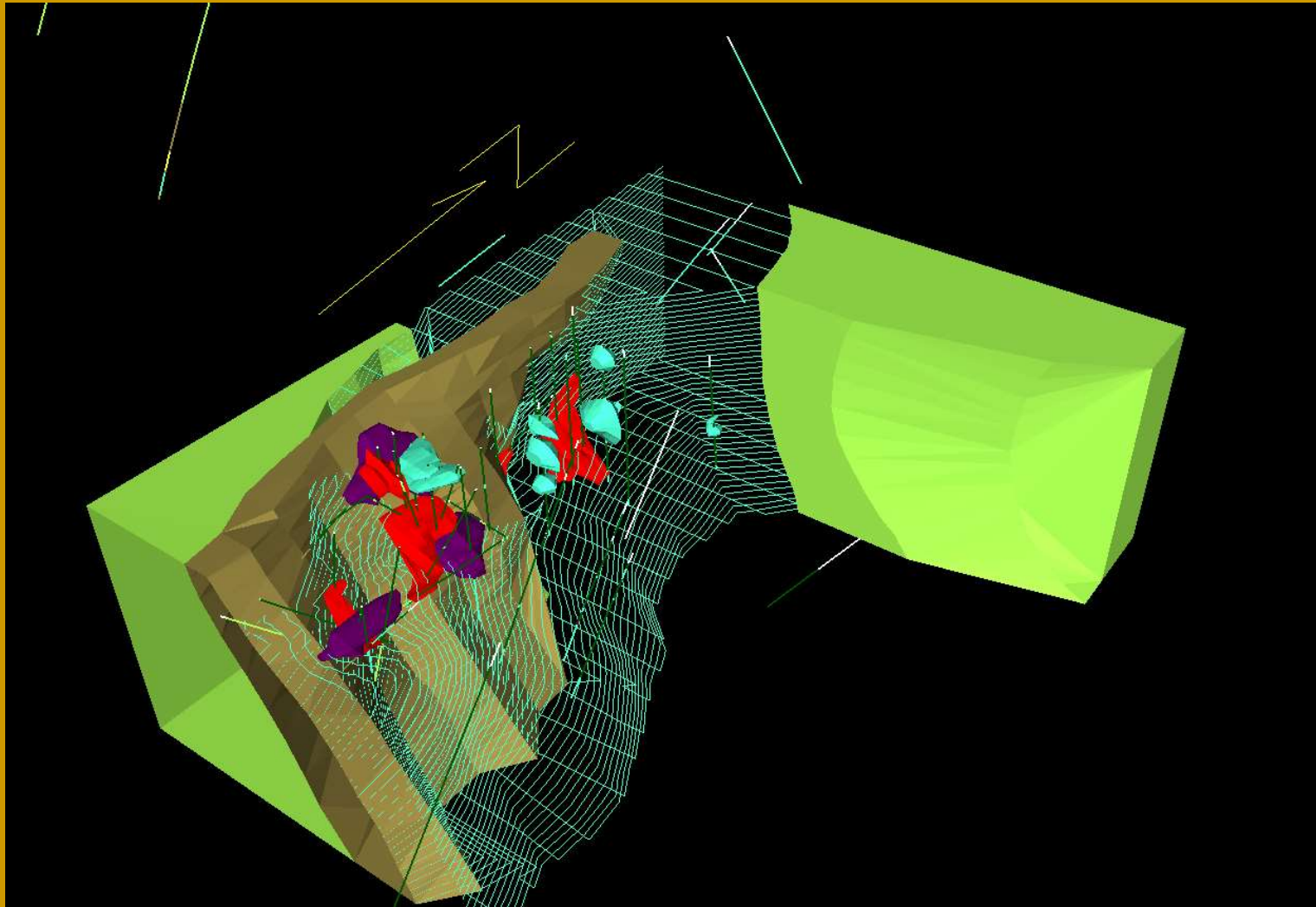
Rock Units



-  Mafic Volcanics
-  Felsic Volcanics
-  Diabase Dyke
-  Ultramafic

Open space is the Gabbro

Mineralized Zones



Metal Tenors

- No S assays in any holes with >0.5% Ni
- Used geologist's sulfide estimates in logs

	From	To	Zone #	Cu (wt%)	Ni (wt%)	% Sulf	Cu 100%	Ni 100%
EL25-07	109.4	110.7	2	0.66	1.37	60	1.10	2.28
EL25-04	84.7	85.7	2	0.64	0.74	15	4.27	4.93
EC-11	154.4	154.7	3	0.17	1.91	70	0.24	2.73
EC-11	154.7	155.3	3	0.15	1.22	35	0.43	3.49
EC-11	155.3	155.8	3	0.07	2.1	70	0.10	3.00
EC-16	97.54	97.84	3	0.28	1.61	80	0.35	2.01
EC-16	97.84	98.15	3	0.23	1.54	70	0.33	2.20
EC-16	98.15	98.45	3	0.55	1.22	50	1.10	2.44
A-2	51.82	52.73	4	0.4	1.32	32	1.25	4.13
A-6	87.87	88.33	4	0.7	1.54	37	1.89	4.16

BH-Geophysics

- Available for EL25-04, -05, -06, -07