

IEP

International Explorers
and Prospectors Inc.

building shareholder value
from knowledge and experience

VMS Deposits in the Abitibi Greenstone Belt

CANADIAN MINING EXPO - INVESTOR FORUM

6 JUNE, 2019

Cautionary Statement

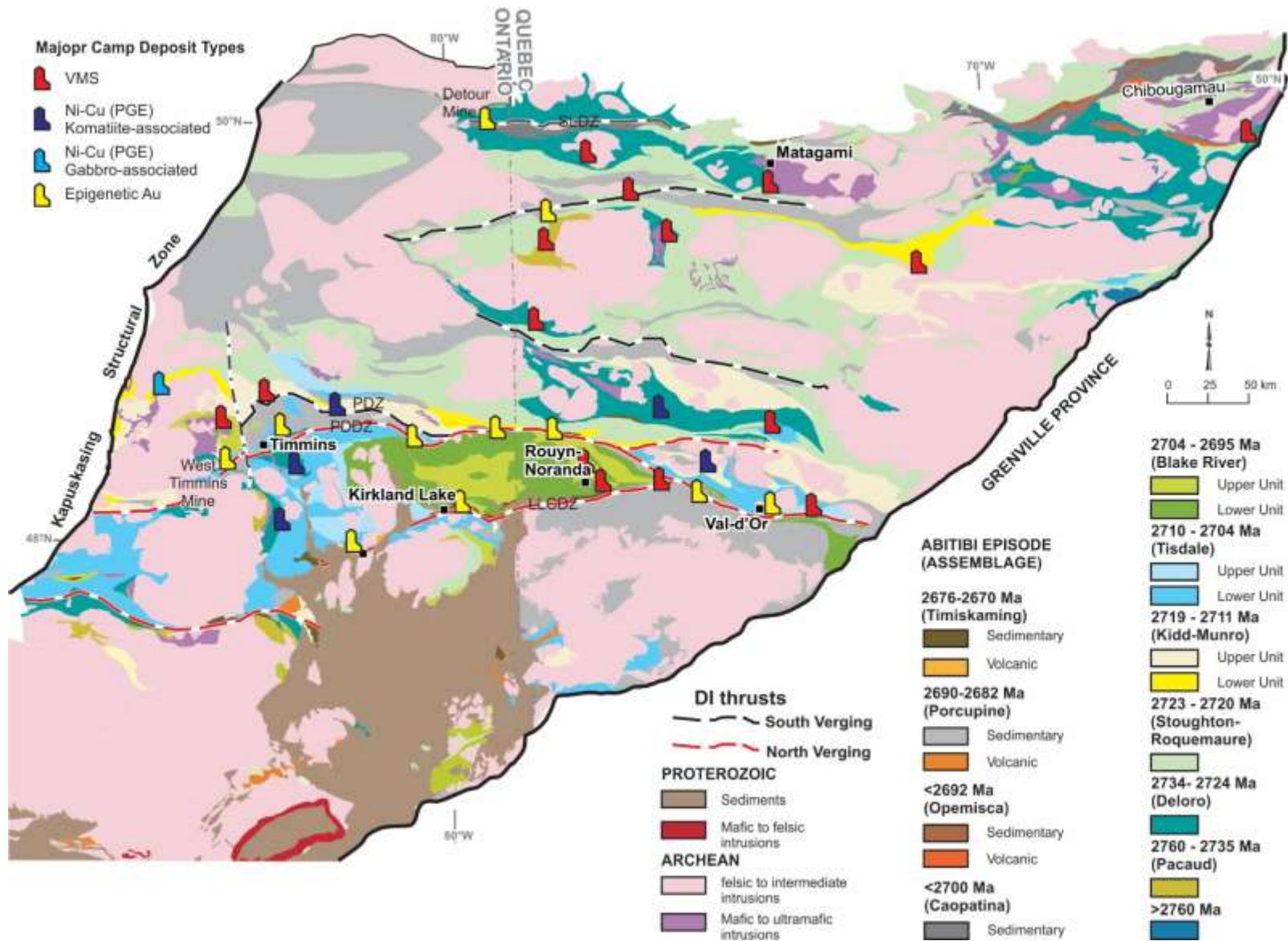
This presentation contains forward-looking statements. All statements, other than of historical fact, that address activities, events or developments that International Explorers and Prospectors Inc. (IEP) believes, expects or anticipates will or may occur in the future (including, without limitation, statements regarding the estimation of mineral resources, exploration results, potential mineralization, potential mineral resources and mineral reserves) are forward-looking statements. Forward-looking statements are generally identifiable by use of the words “may”, “will”, “should”, “continue”, “expect”, “anticipate”, “estimate”, “believe”, “intend”, “plan” or “project” or the negative of these words or other variations on these words or comparable terminology. Forward-looking statements are subject to a number of risks and uncertainties, many of which are beyond IEP’s ability to control or predict, that may cause the actual results of the project to differ materially from those discussed in the forward-looking statements. Factors that could cause actual results or events to differ materially from current expectations include, among other things, without limitation, failure to establish estimated mineral resources, the possibility that future exploration results will not be consistent with IEP’s expectations, changes in world gold markets and other risks disclosed to the Canadian provincial securities regulatory authorities. Any forward-looking statement speaks only as of the date on which it is made and, except as may be required by applicable securities laws, IEP disclaims any intent or obligation to update any forward-looking statement.*

* Total Resources includes all categories of resources unless indicated otherwise.

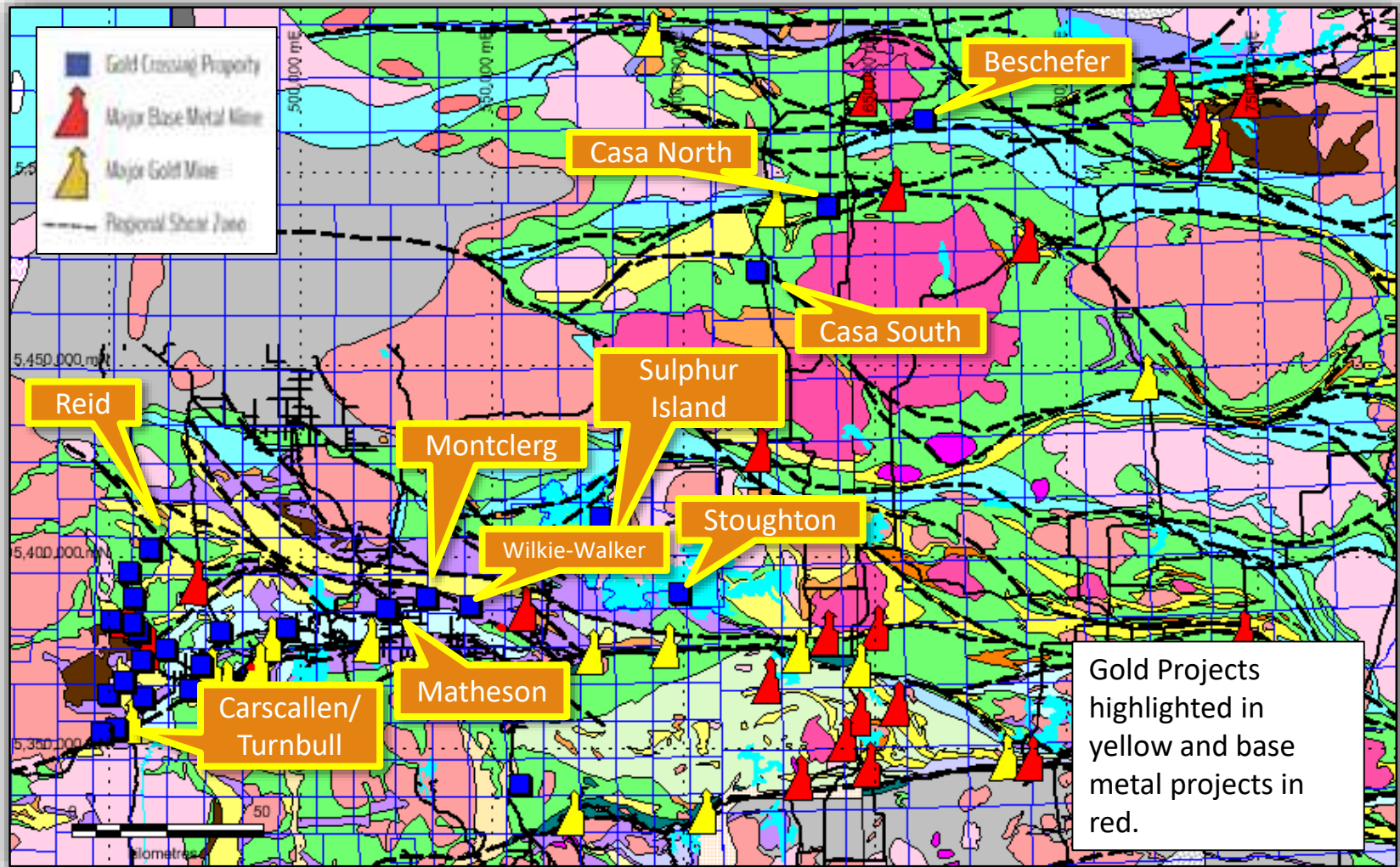
All currency numbers are in \$Can unless otherwise stated.

Management Team

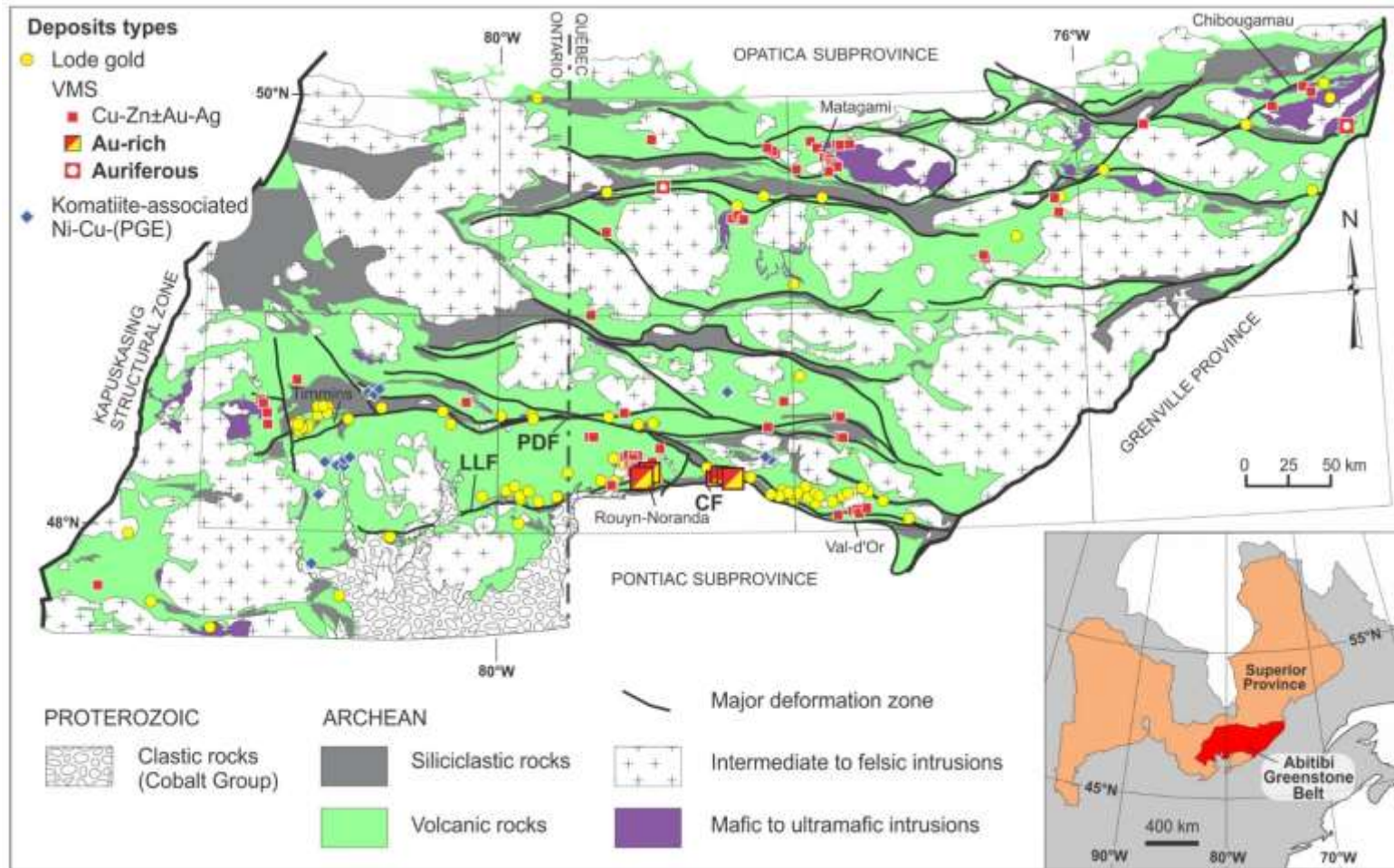
- **Lionel Bonhomme, President:** International Explorers & Prospectors Inc.
- **Peter Colbert, CFO:** International Explorers & Prospectors Inc.
- **Dr. Tim Barrett, Exploration Consultant:** Ore Systems Consulting.



Location of Projects



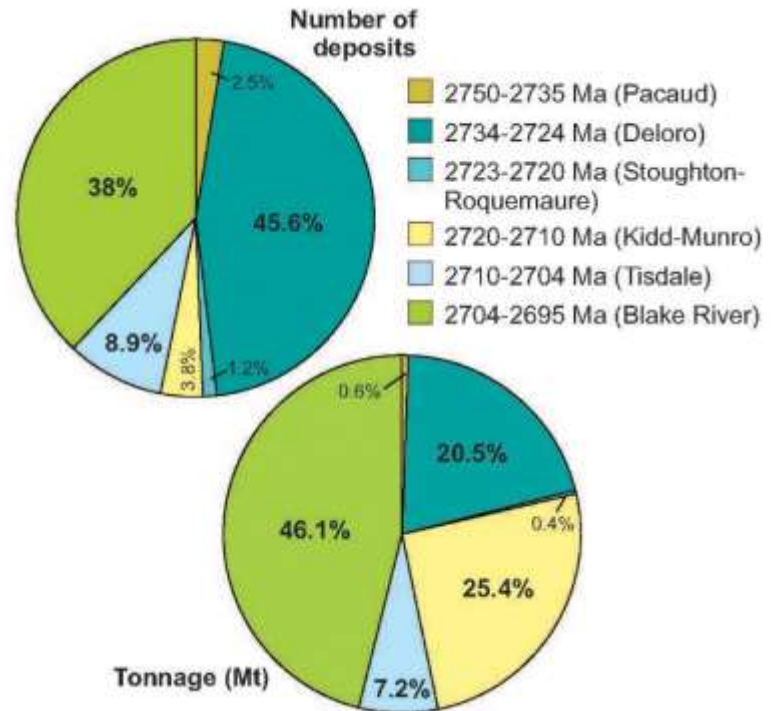
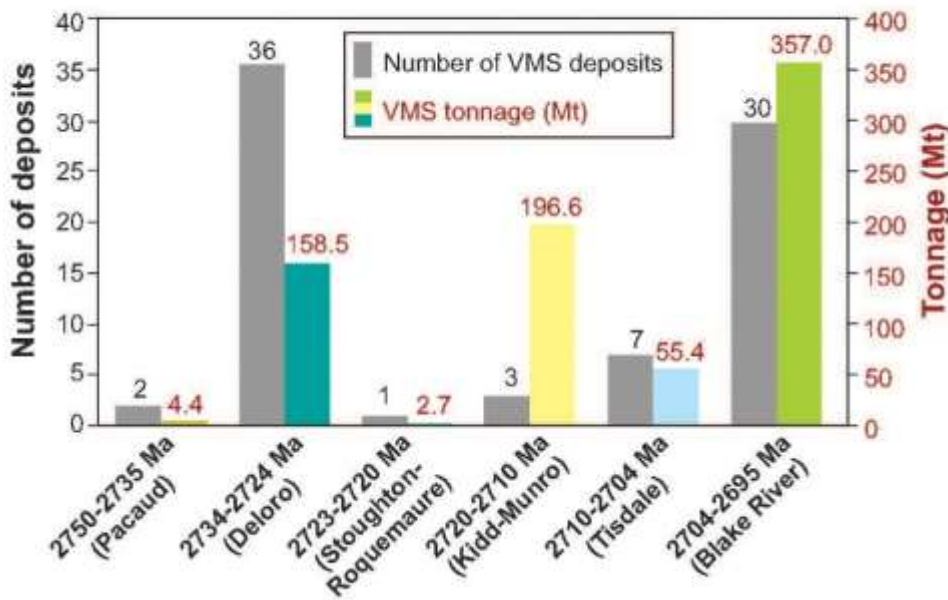
Abitibi greenstone belt – ore deposits (including VMS)



From Mercier-Langevin et al. (2014)

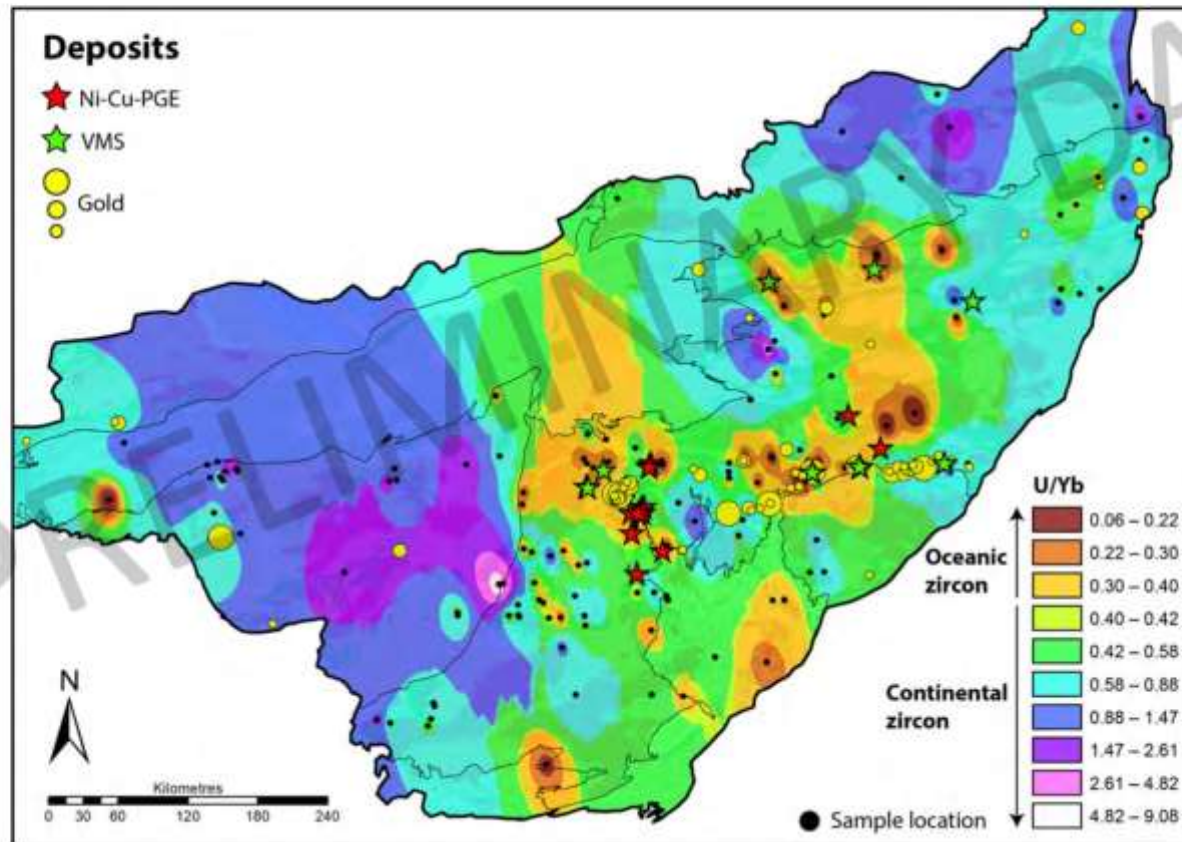
Abitibi greenstone belt – VMS deposits

A

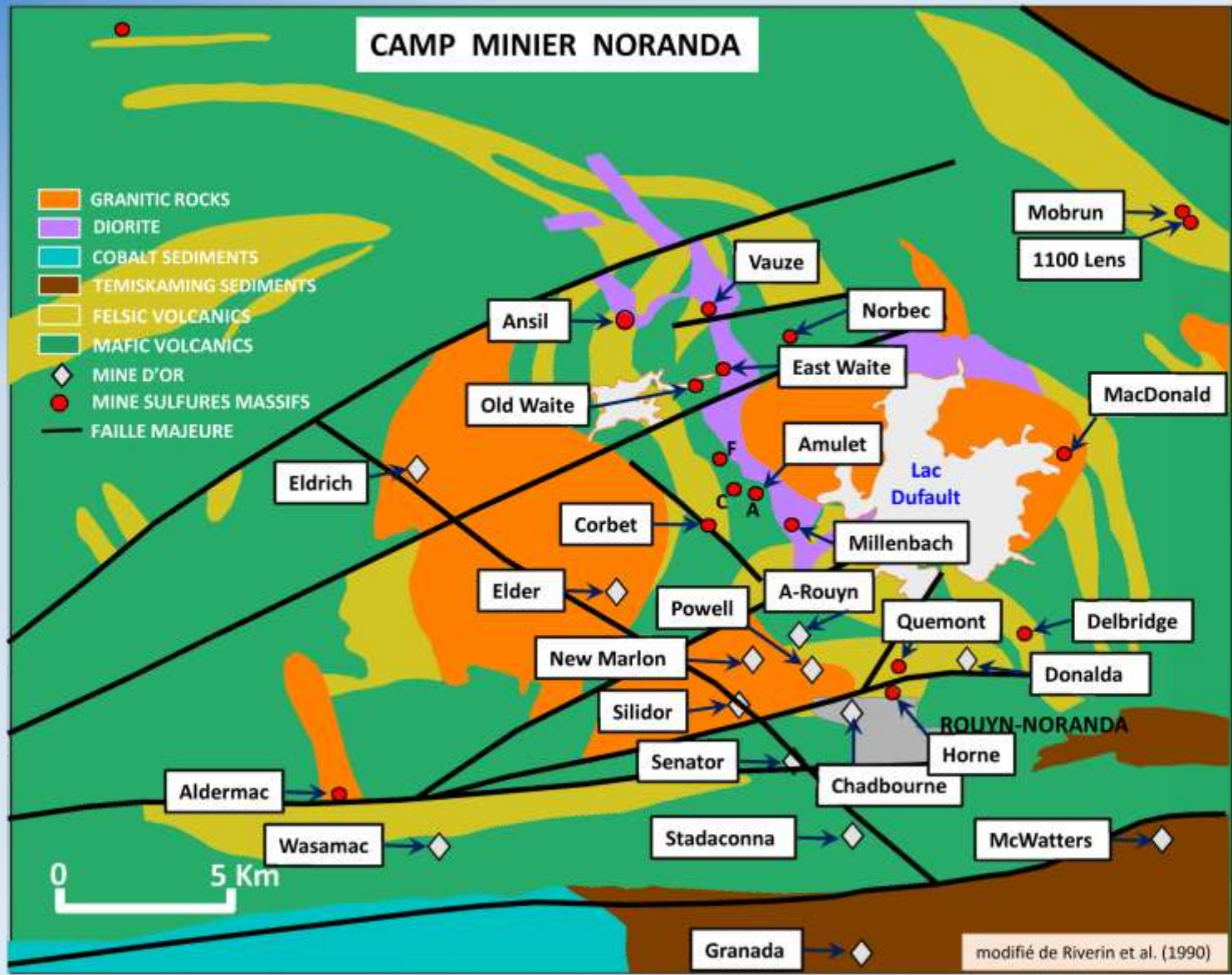


From Monecke et al. (2017)

Combining Hf-O-TE map data



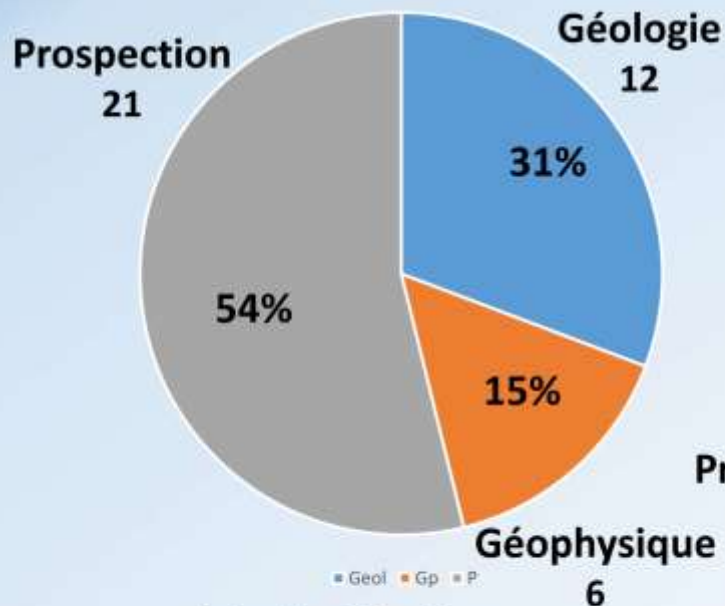
CAMP MINIER NORANDA



modifié de Riverin et al. (1990)

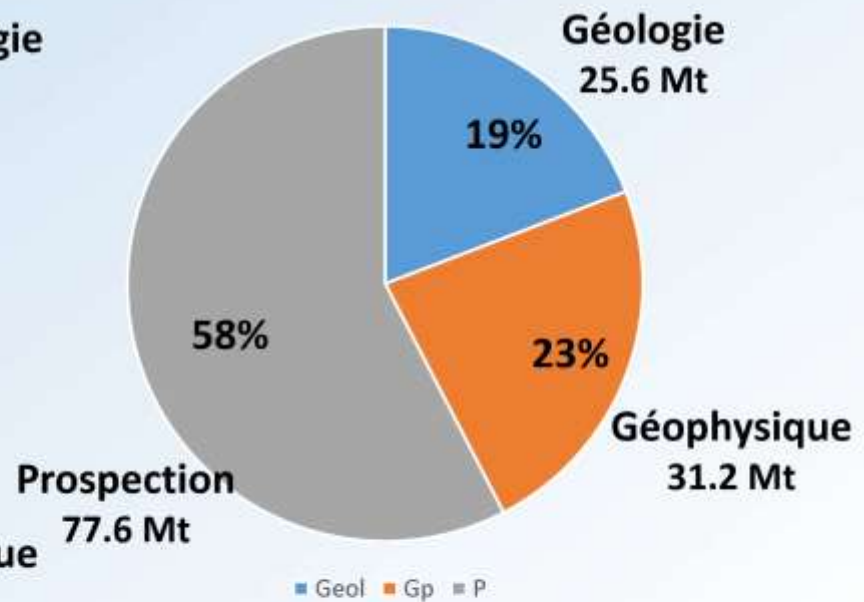
Méthodes de découverte Camp Noranda (1923-2016)

Nombre de mines
par méthode



Total = 39 mines

Tonnage découvert
par méthode



Total = 134 380 027 tonnes

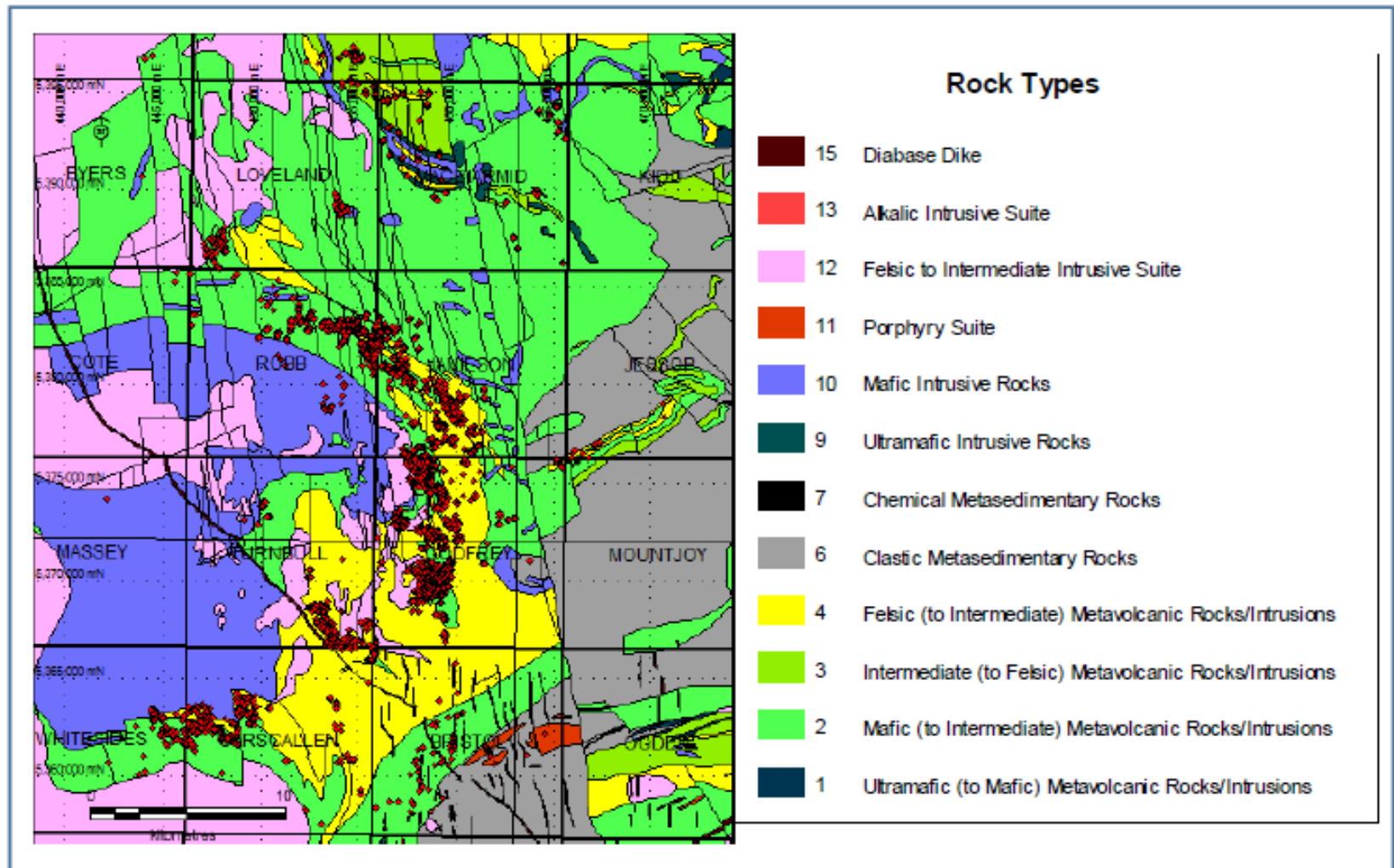
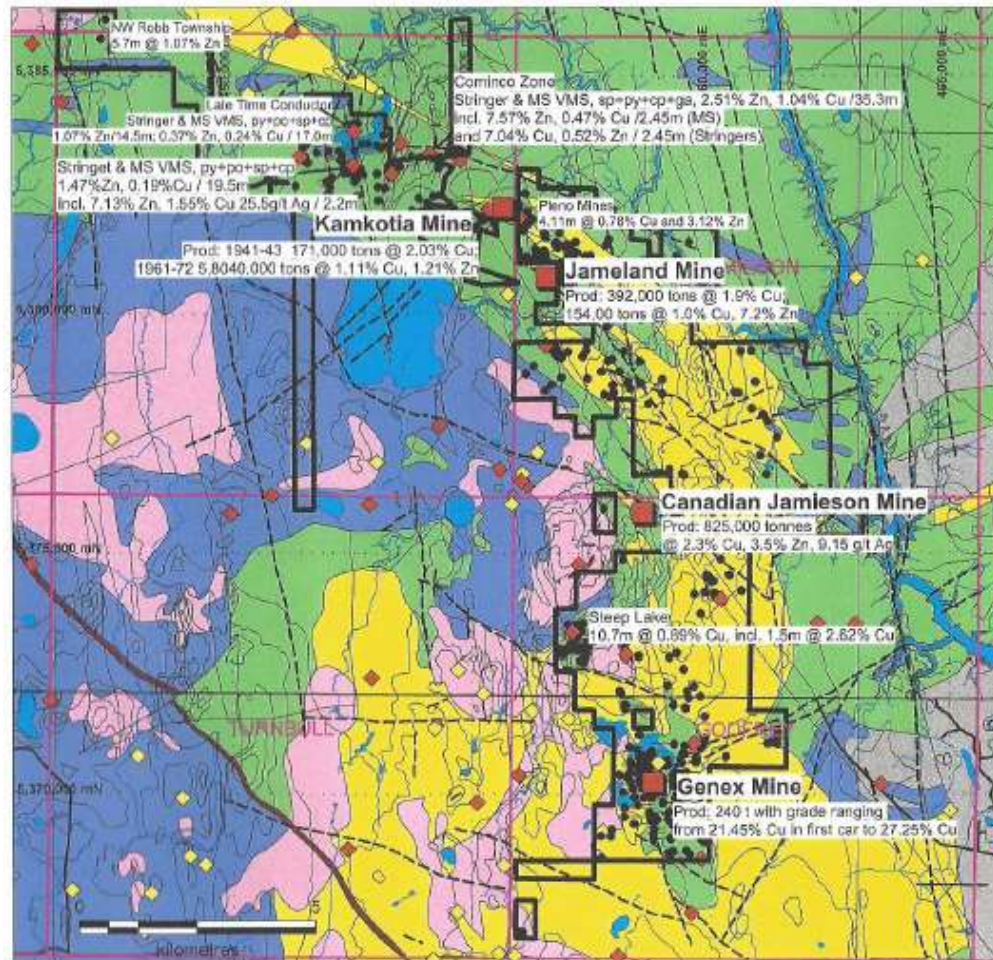
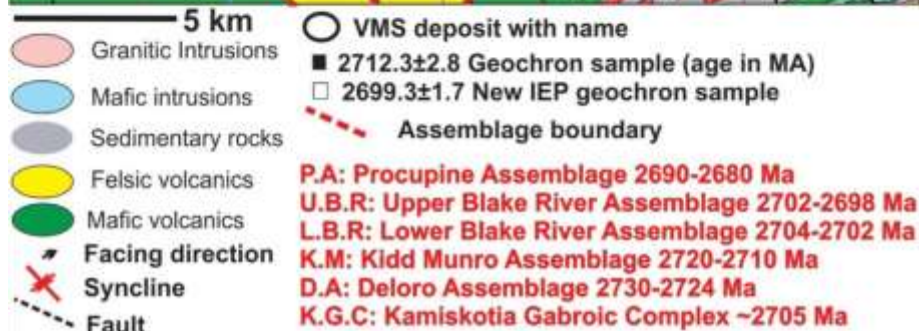
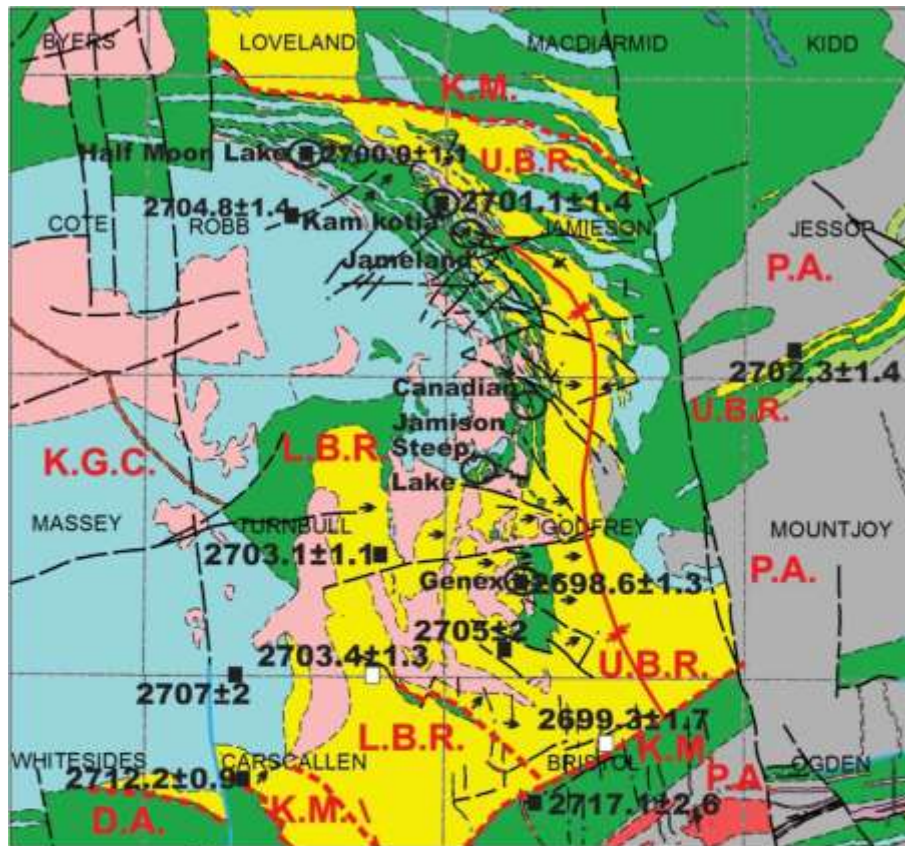


Figure 1: Distribution of 7,857 lithogeochemical samples in Timmins West Area. Samples shown as red diamonds. Geology by Ayers et al., 2005. Coordinates in UTM NAD83, Zone 17.

Kamkotia - Blake River age deposits





Gold/VMS Deposits from Blake River Assemblage

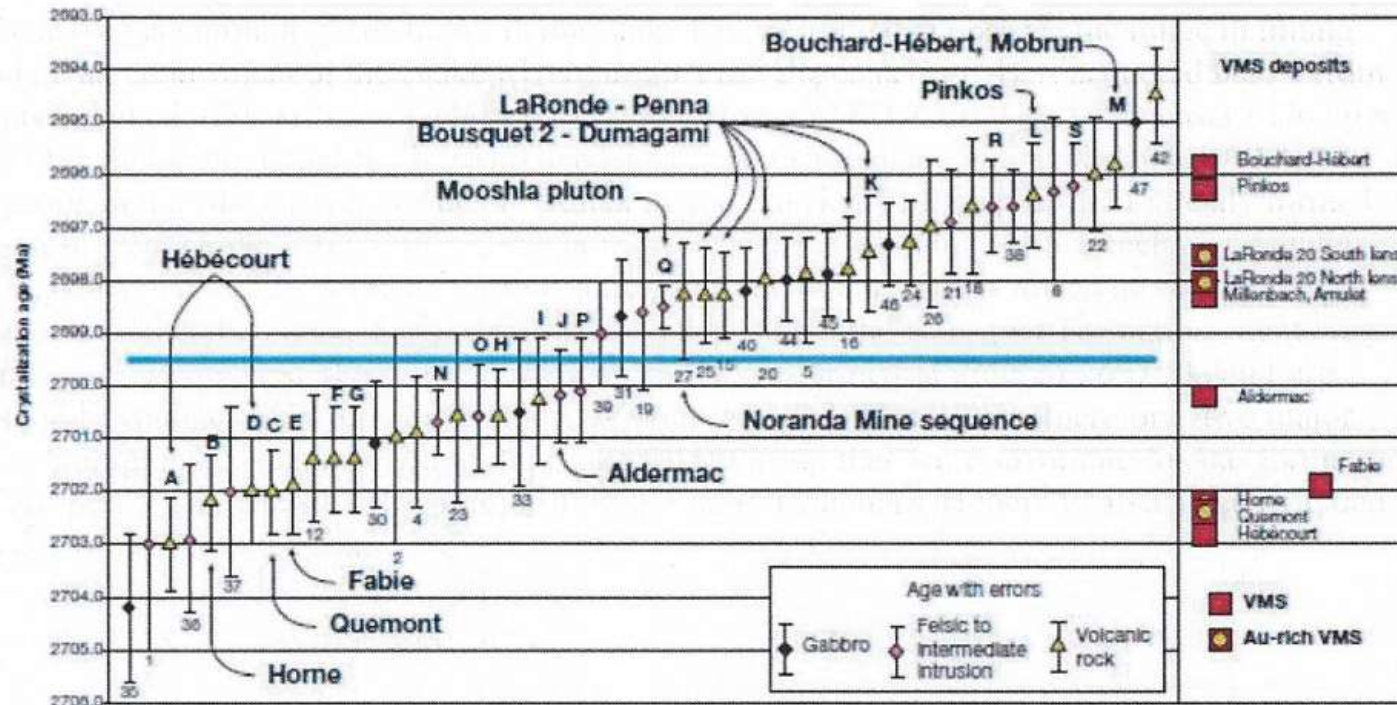
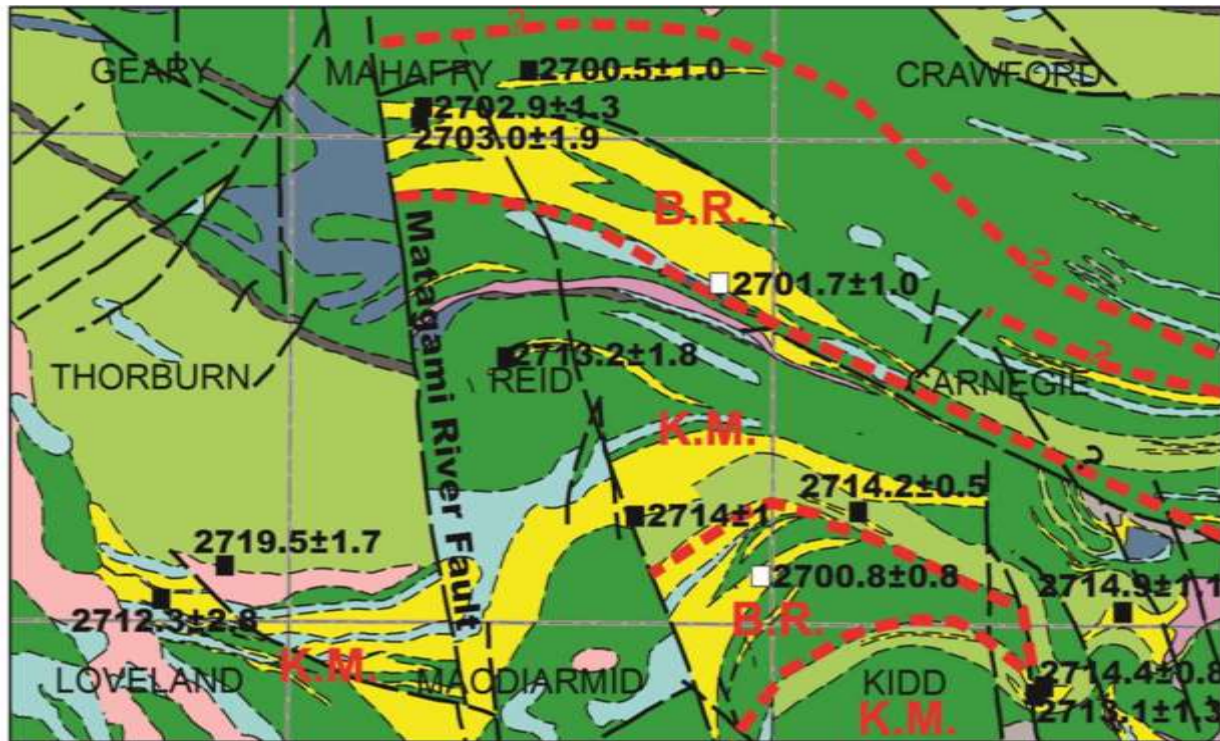


Figure 4. Distribution of U-Pb ages from the Blake River group in Quebec correlated with the timing of VMS deposits (McNicoll et al., 2014)

Ayer, John & Hamilton, Mike, Reid Township and Kamiskotia areas Geochronology, Stratigraphy and VMS Potential



- 5 km
- Granitic intrusions
 - Mafic intrusions
 - Ultramafic intrusions
 - Felsic volcanics
 - Intermediate volcanics
 - Mafic volcanics
 - Ultramafic volcanics

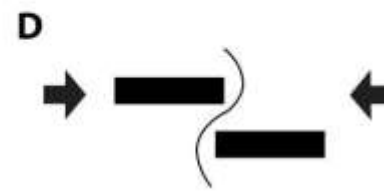
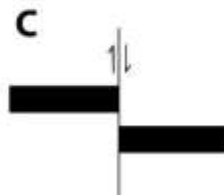
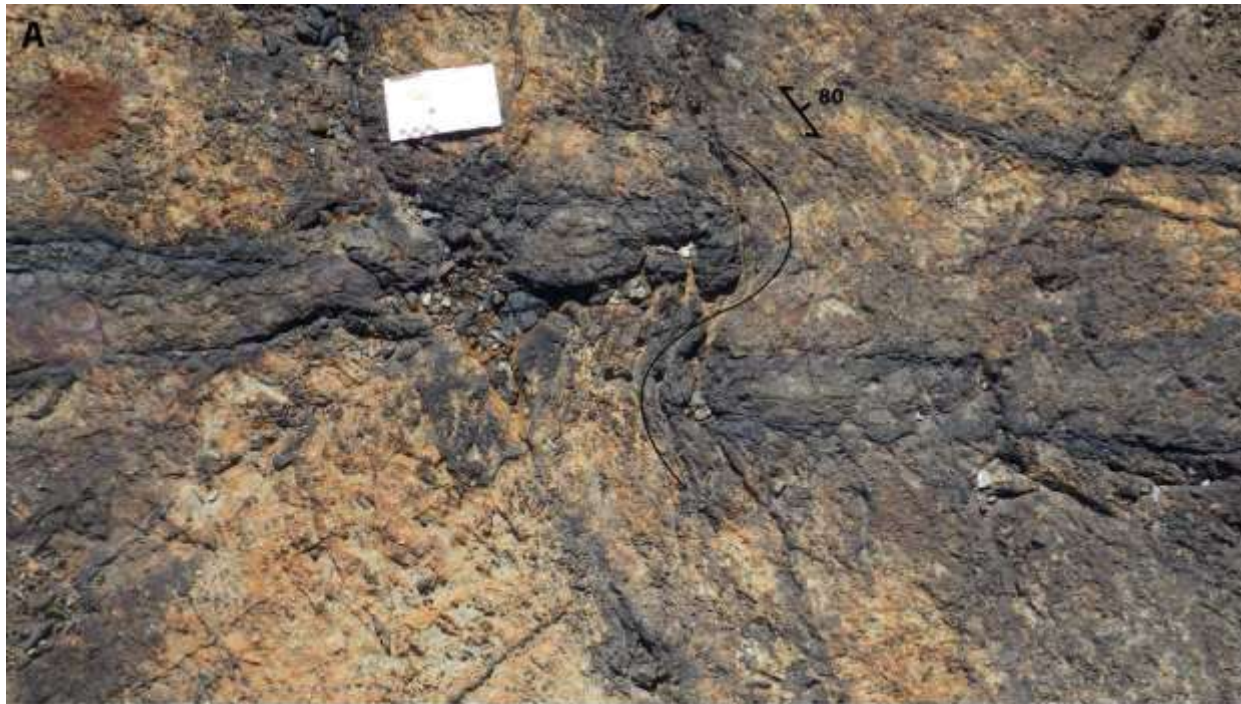
■ 2712.3 ± 2.8 Geochron sample (age in Ma)
 □ 2701.7 ± 1.0 New IEP geochron result

--- Fault

- - - Assemblage boundary

B.R.: Blake River Assemblage (2704-2697 Ma)
K.M.: Kidd-Munro Assemblage (2720-2710 Ma)

Secondary quartz sulphide veins at Powell F-zone, with overprinting deformation
METAL EARTH – ROUYN-NORANDA FIELD TRIP GUIDE

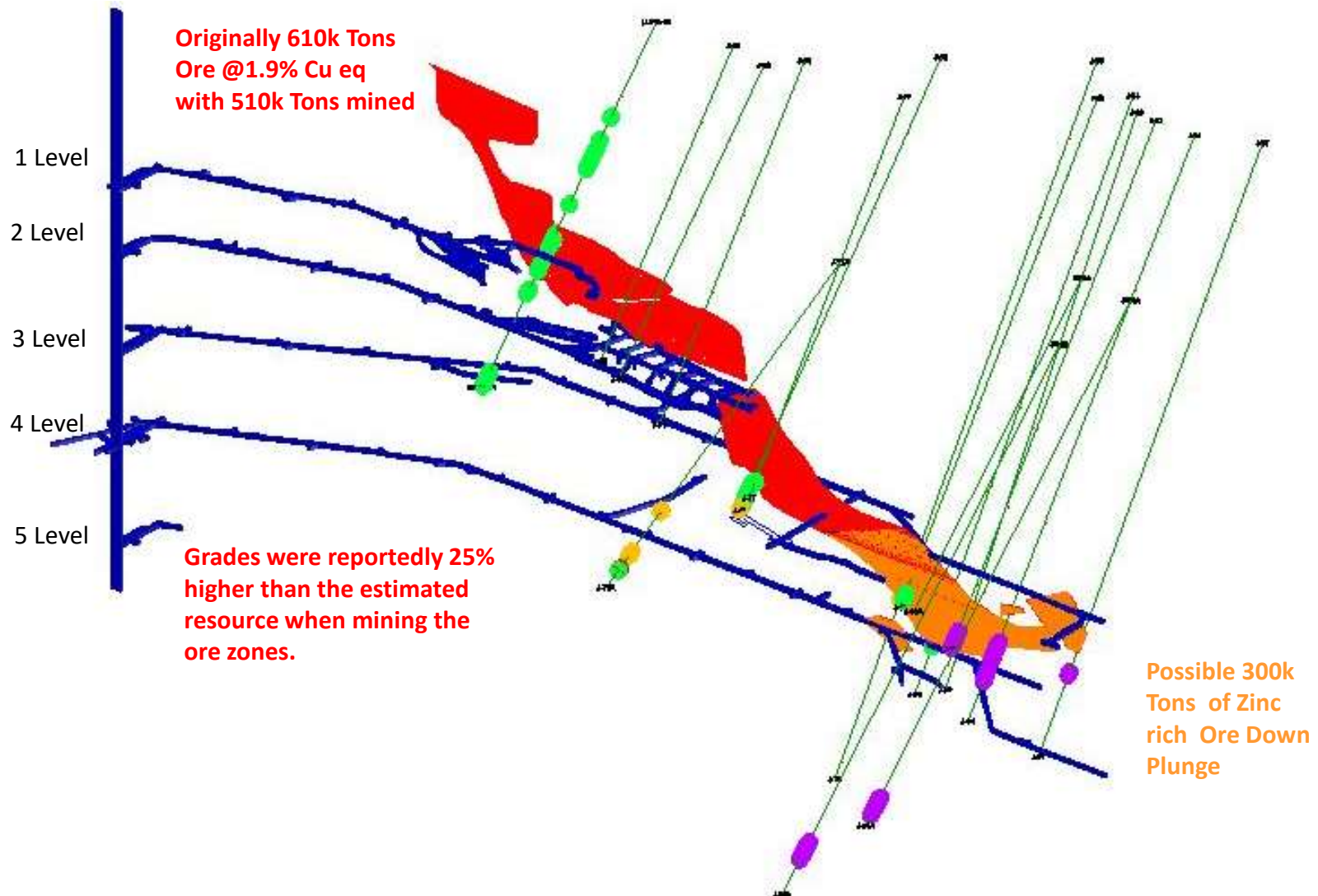


Godfrey Twp. Veining at granophyre- felsic contact
***new geochron date in process**



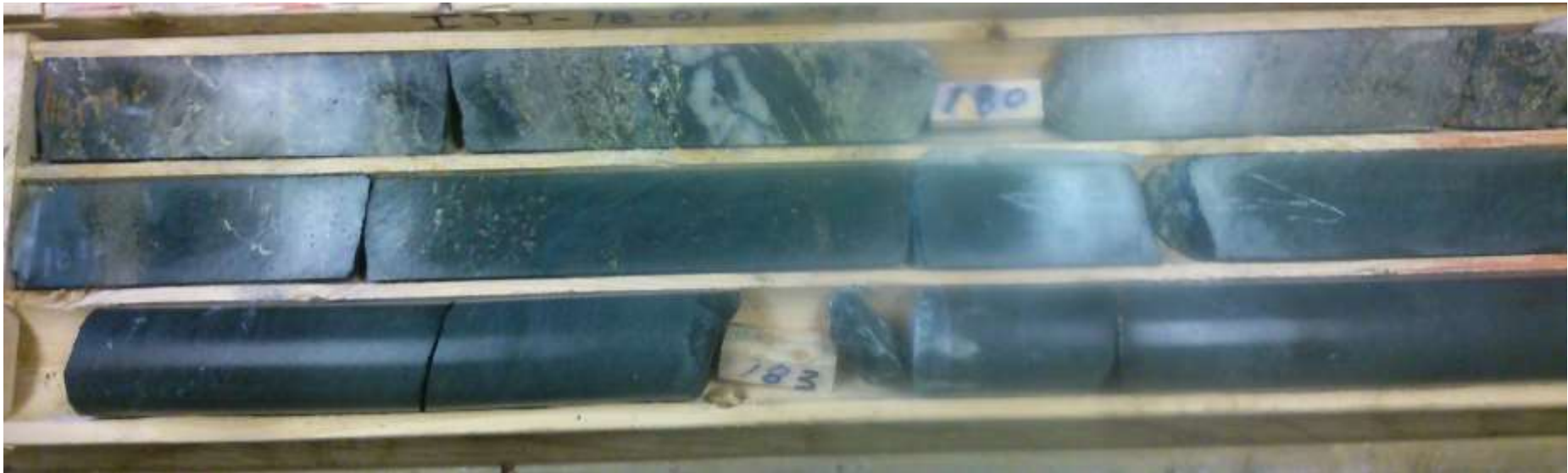
Jameland Mine

Jameland Shaft

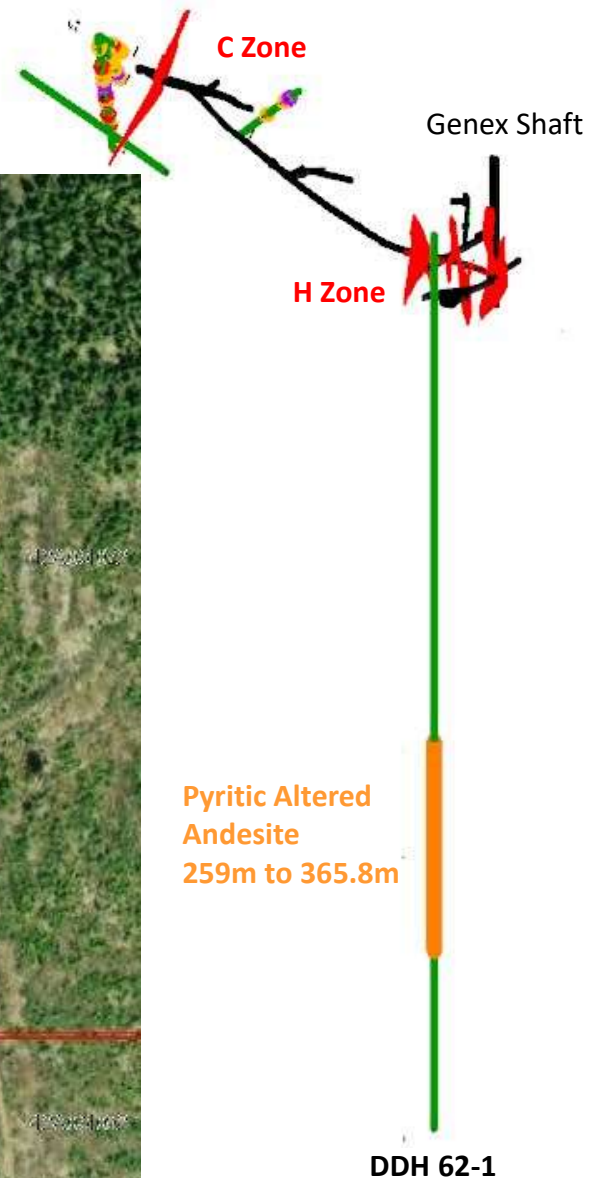




Hole IJ 18-01



Genex Mine



Silica-sericite alteration: high Au-Ag-Bi

Project: Genex / Godfrey Twp., Ontario

Hole I.D: IG-17-12
Interval: 75.4m - 79.2m

Assay Value over 3.8m = 0.21% Cu, 0.93% Zn, 3.92 g/t Au, 12.3 g/t Ag



Litho analysis at 78.7-78.9m: Highly altered andesite:

Cu = 0.35 %, Zn = 0.14 %, Pb = 0.39 %, Au = 9.0 ppm, Ag = 59 ppm,
As = 0.01 %, Bi = 3070 ppm, Sb = 7 ppm, Sn = 31 ppm, $\Sigma S = 2.7$ %

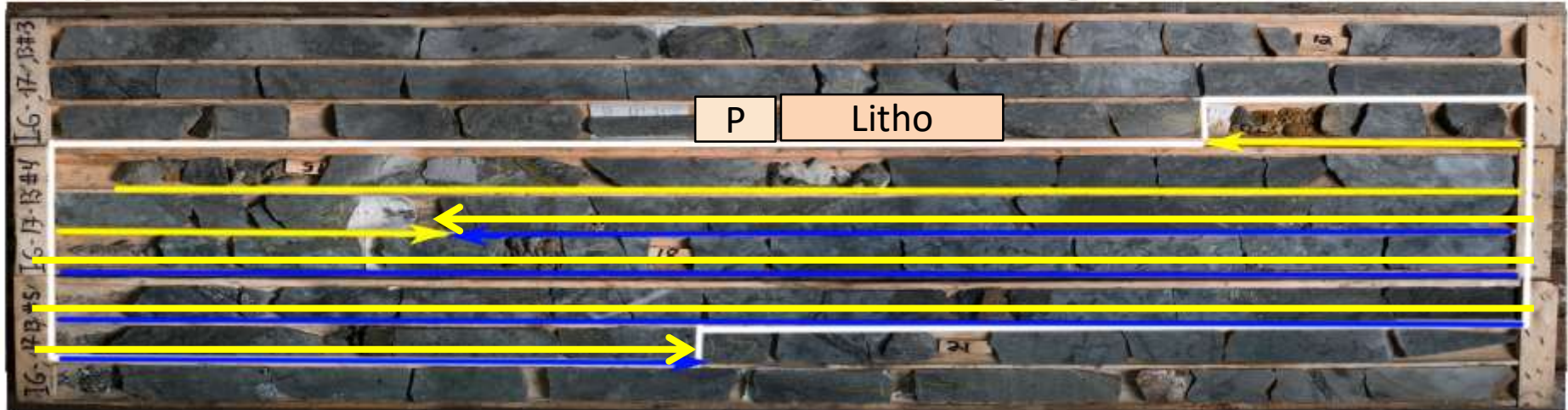
This sample is silica-enriched and sericitized (4.4 % K₂O)

Chlorite-pyrite-sericite alteration: high Cu-Mo

Project: Genex / Godfrey Twp., Ontario

Hole I.D: IG-17-13
Interval: 14.7m - 20.8m

Assay Value over 6.1m = 2.01% Cu, 0.32% Zn, 0.601 g/t Au, 16.1 g/t Ag



Litho analysis at 14.2-14.4m: Highly altered FeTi basalt:

Cu = 1.60 %, Zn = 0.18 %, Pb = 0.01 %, Au = 0.31 ppm, Ag = 9.8 ppm,
As = 0.40 %, Bi = 24 ppm, Sb = 8 ppm, Mo = 239 ppm, Sn = 38 ppm, $\Sigma S > 10 \%$

This sample is very silica-leached and chloritized-sericitized (5.1 % K_2O)

Acknowledgements

Tim Barrett	Ore Systems Consulting
John Ayer	MERC/OGS
Patrick Langevin-Mercier	GSC
Ed van Hees	MNDM
Peter Colbert	Entrepreneur/Explorer
Bill Schweng	WTS Technical Services

Internationalexplorersandprospectors.com

Special Thanks to our Exploration Service Providers



Laboratoire Expert Inc.

127, Boulevard Industriel
Rouyn-Noranda, Québec
Canada, J9X 6P2
Téléphone : (819) 762-7100, Télécopieur : (819) 762-7510