

*PRECIOUS AND BASE METAL  
OPPORTUNITIES IN THE ABITIBI*

NEOMMS - TIMMINS - OCTOBER 1, 2019

# Cautionary Statement

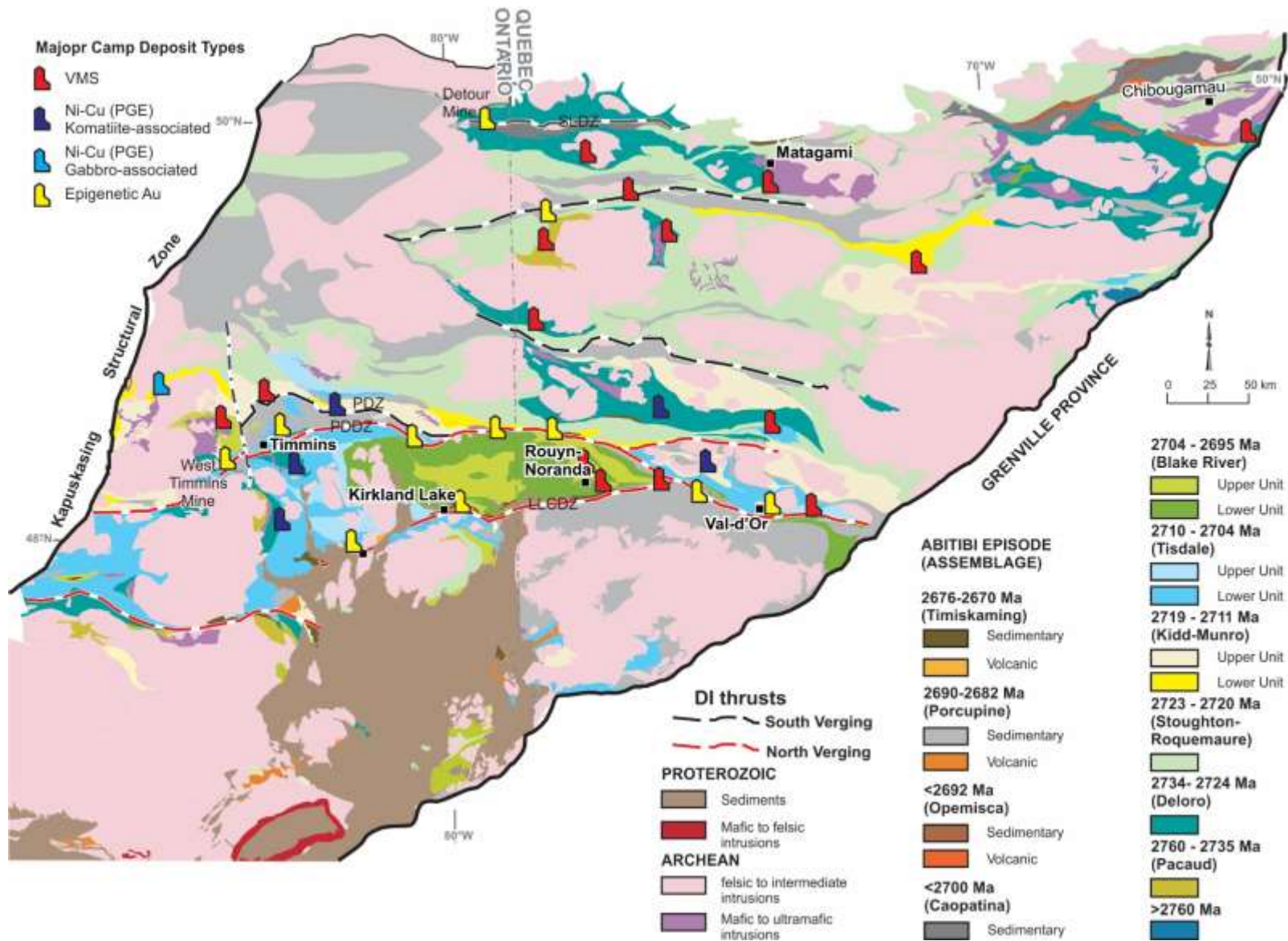
*This presentation contains forward-looking statements. All statements, other than of historical fact, that address activities, events or developments that International Explorers and Prospectors Inc. (IEP) believes, expects or anticipates will or may occur in the future (including, without limitation, statements regarding the estimation of mineral resources, exploration results, potential mineralization, potential mineral resources and mineral reserves) are forward-looking statements. Forward-looking statements are generally identifiable by use of the words “may”, “will”, “should”, “continue”, “expect”, “anticipate”, “estimate”, “believe”, “intend”, “plan” or “project” or the negative of these words or other variations on these words or comparable terminology. Forward-looking statements are subject to a number of risks and uncertainties, many of which are beyond IEP’s ability to control or predict, that may cause the actual results of the project to differ materially from those discussed in the forward-looking statements. Factors that could cause actual results or events to differ materially from current expectations include, among other things, without limitation, failure to establish estimated mineral resources\*, the possibility that future exploration results will not be consistent with IEP’s expectations, changes in world gold markets and other risks disclosed to the Canadian provincial securities regulatory authorities. Any forward-looking statement speaks only as of the date on which it is made and, except as may be required by applicable securities laws, IEP disclaims any intent or obligation to update any forward-looking statement.*

\* Total Resources includes all categories of resources unless indicated otherwise.

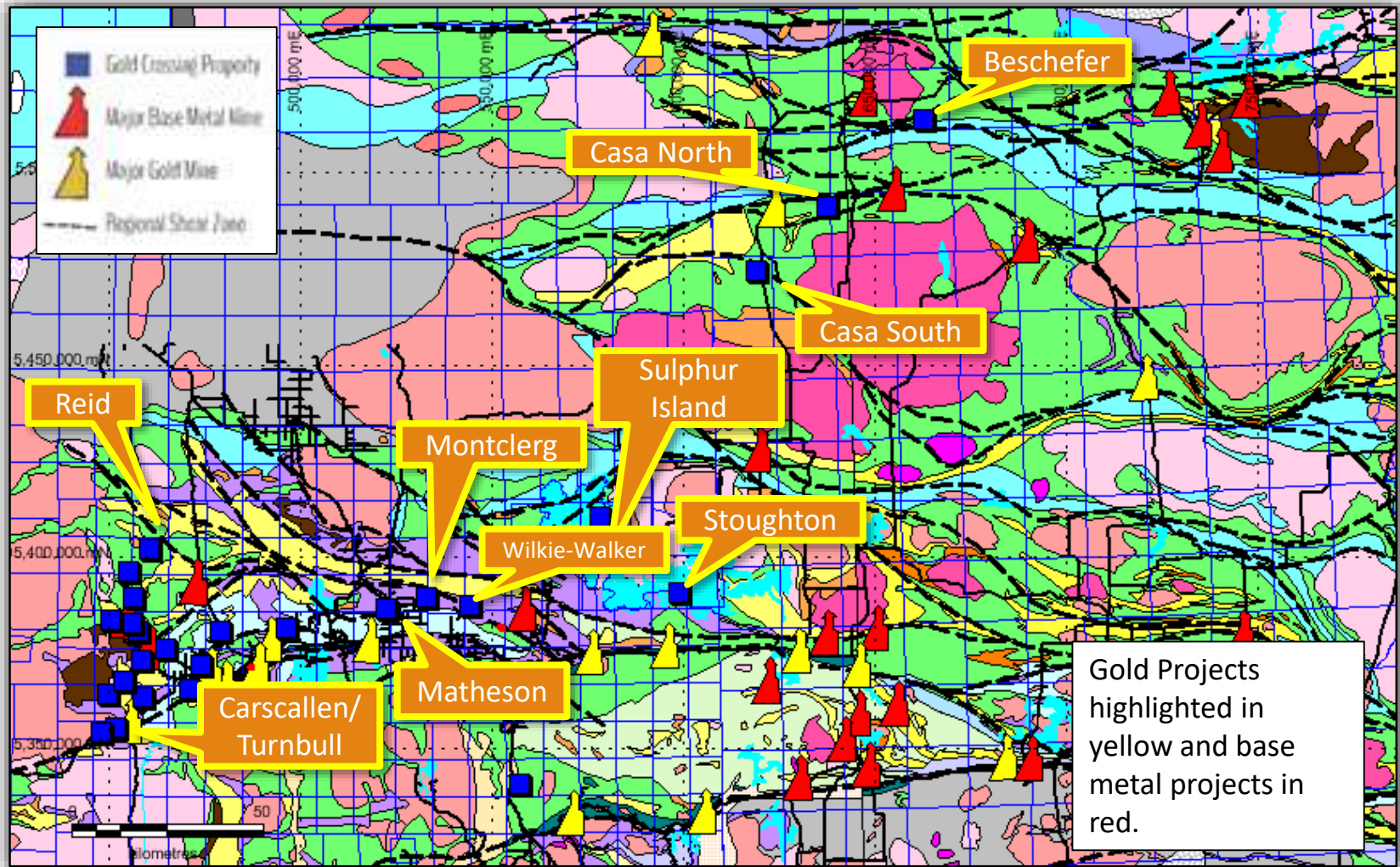
**All currency numbers are in \$Can unless otherwise stated.**

# Management Team

- **Lionel Bonhomme, President:** International Explorers & Prospectors Inc.
- **Peter Colbert, CFO:** International Explorers & Prospectors Inc.
- **Dr. Tim Barrett, Exploration Consultant:** Ore Systems Consulting.



# Location of Projects



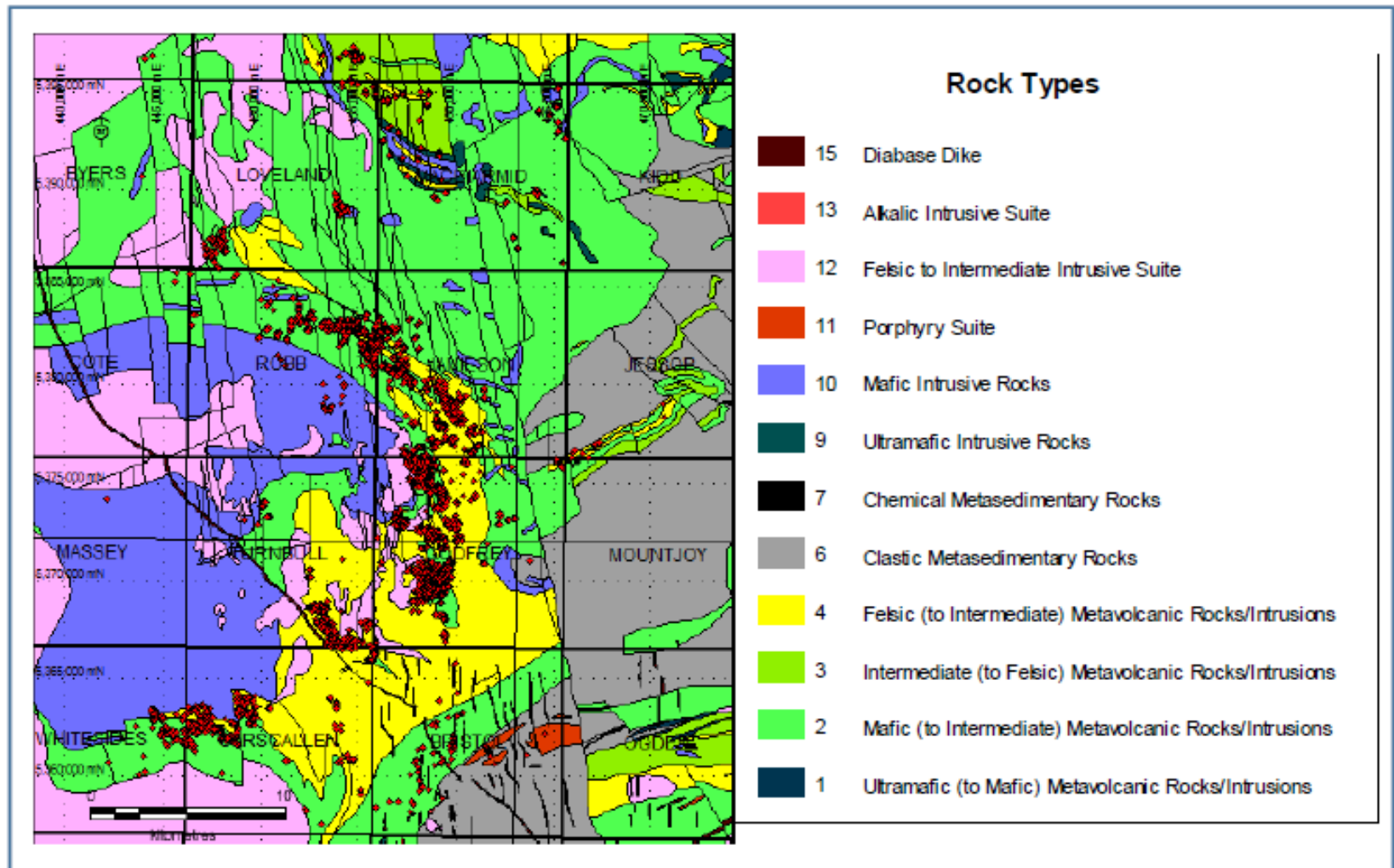


Figure 1: Distribution of 7,857 lithogeochemical samples in Timmins West Area. Samples shown as red diamonds. Geology by Ayers et al., 2005. Coordinates in UTM NAD83, Zone 17.

# Gold/VMS Deposits from Blake River Assemblage

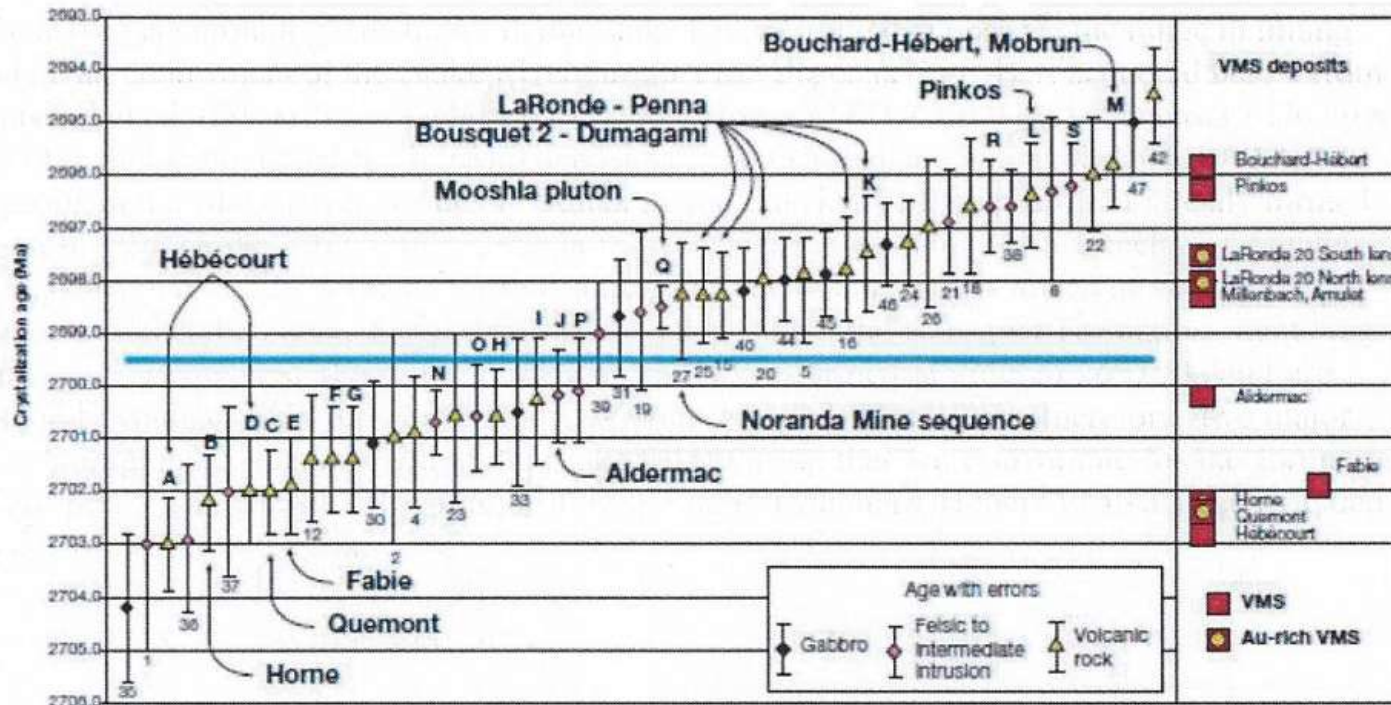


Figure 4. Distribution of U-Pb ages from the Blake River group in Quebec correlated with the timing of VMS deposits (McNicoll et al., 2014)

Ayer, John & Hamilton, Mike, Reid Township and Kamiskotia areas Geochronology, Stratigraphy and VMS Potential

**Godfrey Twp. Veining at granophyre- felsic contact**  
**\*new geochron date in process**





## Silica-sericite alteration: high Au-Ag-Bi

Project: Genex / Godfrey Twp., Ontario

Hole I.D: IG-17-12  
Interval: 75.4m - 79.2m

Assay Value over 3.8m = 0.21% Cu, 0.93% Zn, 3.92 g/t Au, 12.3 g/t Ag



### Litho analysis at 78.7-78.9m: Highly altered andesite:

Cu = 0.35 %, Zn = 0.14 %, Pb = 0.39 %, Au = 9.0 ppm, Ag = 59 ppm,  
As = 0.01 %, Bi = 3070 ppm, Sb = 7 ppm, Sn = 31 ppm,  $\Sigma S = 2.7$  %

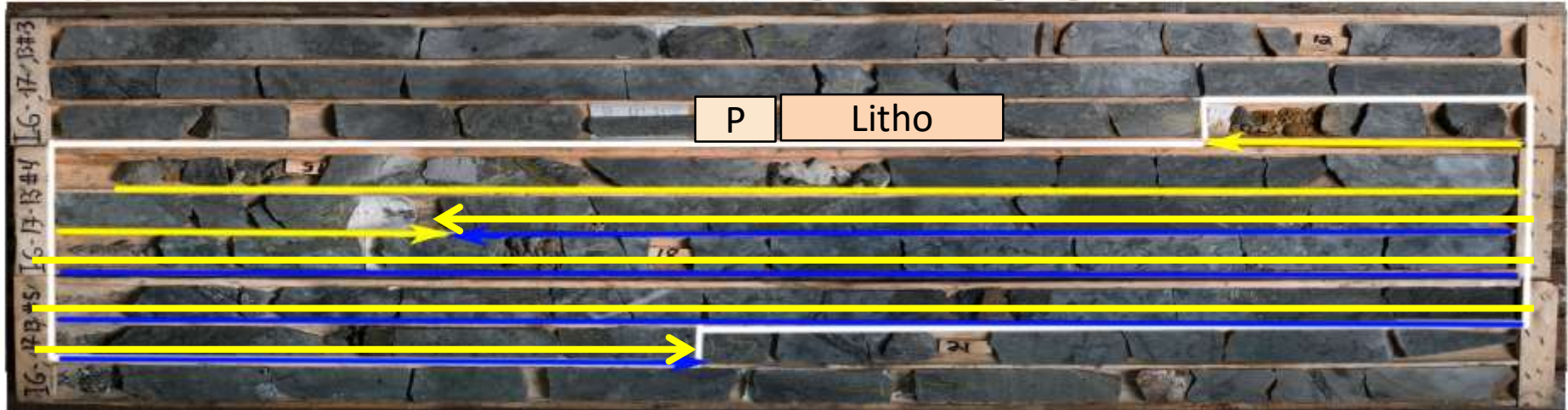
This sample is silica-enriched and sericitized (4.4 % K<sub>2</sub>O)

# Chlorite-pyrite-sericite alteration: high Cu-Mo

Project: Genex / Godfrey Twp., Ontario

Hole I.D: IG-17-13  
Interval: 14.7m - 20.8m

Assay Value over 6.1m = 2.01% Cu, 0.32% Zn, 0.601 g/t Au, 16.1 g/t Ag



## Litho analysis at 14.2-14.4m: Highly altered FeTi basalt:

Cu = 1.60 %, Zn = 0.18 %, Pb = 0.01 %, Au = 0.31 ppm, Ag = 9.8 ppm,  
As = 0.40 %, Bi = 24 ppm, Sb = 8 ppm, Mo = 239 ppm, Sn = 38 ppm,  $\Sigma S > 10$  %

This sample is very silica-leached and chloritized-sericitized (5.1 %  $K_2O$ )

---

# 2018 Genex highlights

## IG-18-16

6.5 m containing 1.13 % Zn, 0.51 % Cu, 1.58 g/t Au, from 7.6 m to 14.1 m

## IG-18-17

6.0 m containing 0.52 % Cu and 0.294 g/t Au from 10.5 m to 16.5 m

## IG-18-18

5.6 m containing 1.24% Cu and 0.315 g/t Au from 15.0 m to 20.6 m and  
4.5 m containing 2.18% Cu and 0.512 g/t Au from 25.1 m to 29.6

## IG-18-19

5.1 m containing 0.87 % Cu and 0.510 g/t Au from 21.6 m to 26.7 m and  
4.50 m containing 1.66 % Cu and 0.377 g/t Au from 31.5 to 36.0 m and  
7.00 m containing 0.64% Cu and 0.361 g/t Au 43.0 m to 50.0m

# 2018 Jameland highlights

IJJ 18-01 148.3-149.5 1.2m, 3.67% cu and 156.8-157.6 0.8m 1.34% cu



IJJ 18-01 179.5-180.5 1m, 6.2% cu and 180.5-181.6 1.1m 1.74% cu



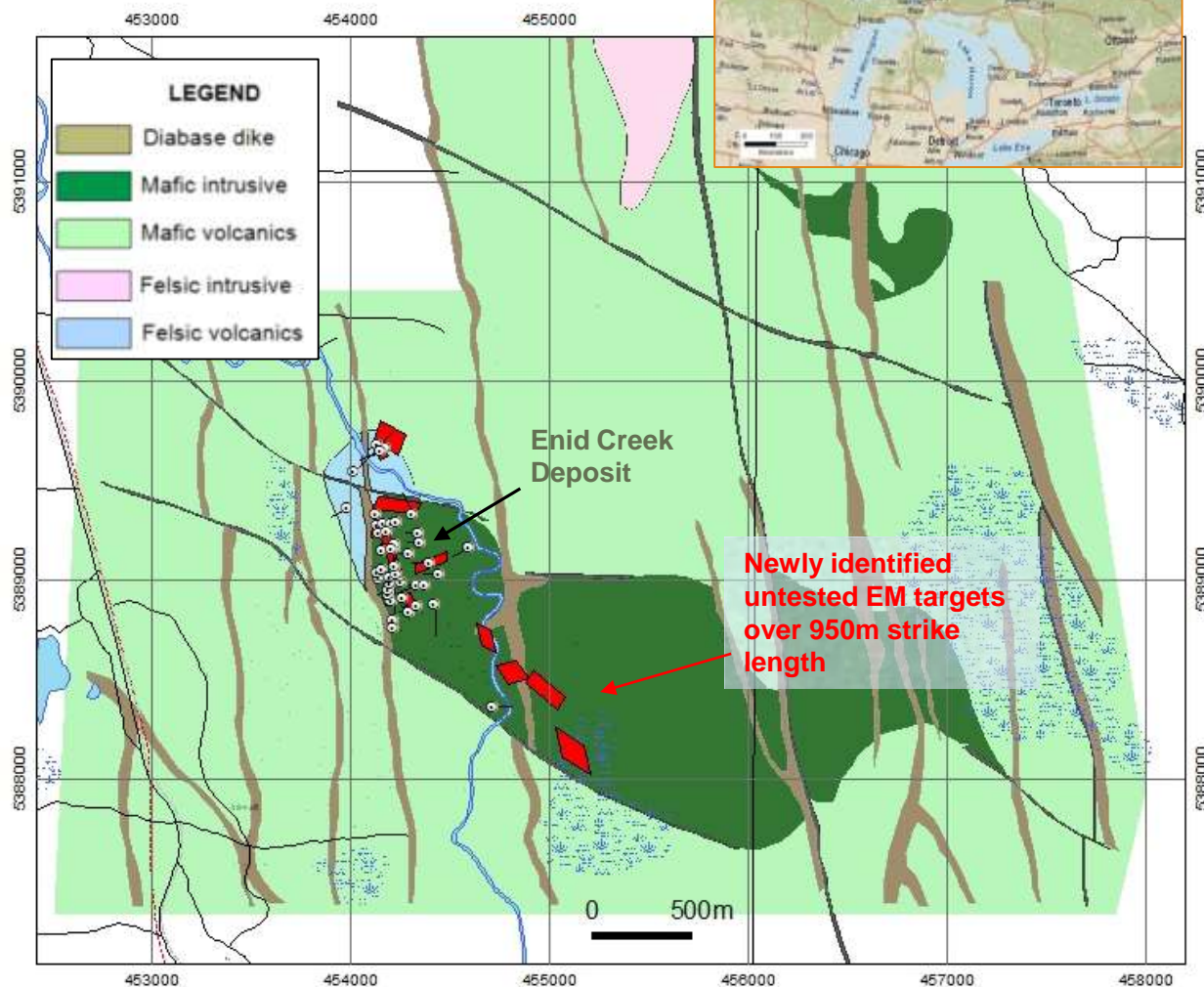
# Ontario: Loveland Nickel

## Property Highlights

- Located 30 km northwest of Timmins and has year round access
- The property is underlain by a mineralized differentiated mafic-ultramafic complex that is host to the historic Enid Creek deposit
- Gabbroic intrusion with basal pyroxenite zone
- Established nickel potential
- Recent VTEM<sub>MAX</sub> survey flown Dec 2016 - Jan 2017
- Untested high quality EM targets located along strike of known nickel mineralization

## Planned Program

- Drill untested EM targets in fall 2019
- BHEM in drillholes



## Massive sulphide assays

DDH L-1: 2.74% Ni, 1.3% Cu, 0.15% Co

DDH L-13: 2.13% Ni, 0.19% Cu, 0.15% Co

DDH EL25-00-07: 1.98% Ni, 0.91% Cu, 0.14% Co

Average nickel tenor of 3.13

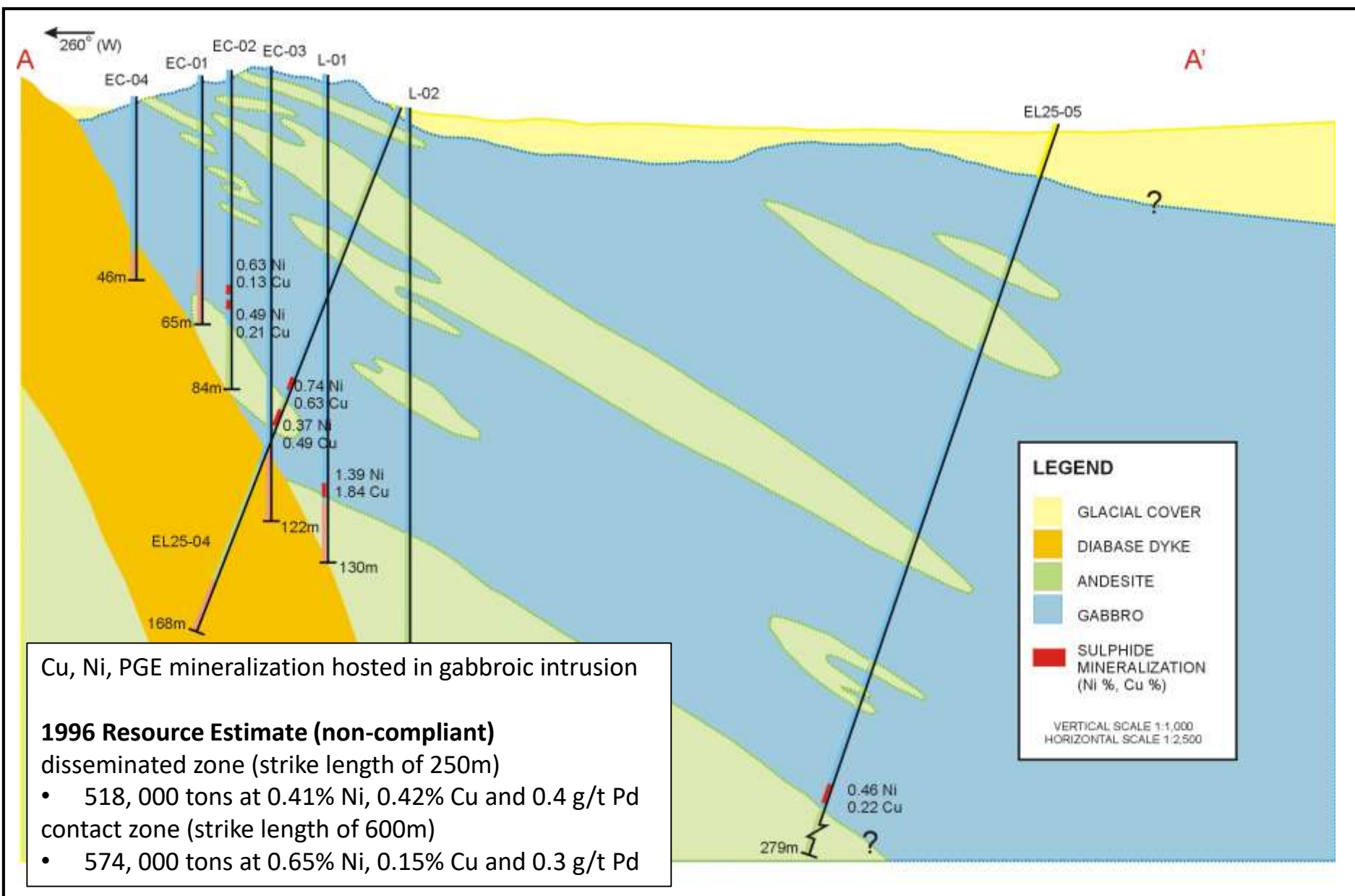
Variable-textured gabbro with disseminated sulfide and metapyroxenite (EL25-04 84-85m)



Variety of rock types in drill core confirms differentiated intrusion, which is a good setting for nickel deposits

Metapyroxenite EL25-00-07  
107-111m with semi-massive sulfide mineralization





**Legend:**

Rock Composition  
 FEL = Felsic  
 INTER = Intermediate  
 MAF = Mafic  
 UM = Ultramafic

Rock Type  
 Volc = Volcanic  
 Int = Intrusive  
 S = Sediment  
 ST = Sediment of the Temicaming type

Mineralized Corridor

0 1 2 3 4  
 Kilometres

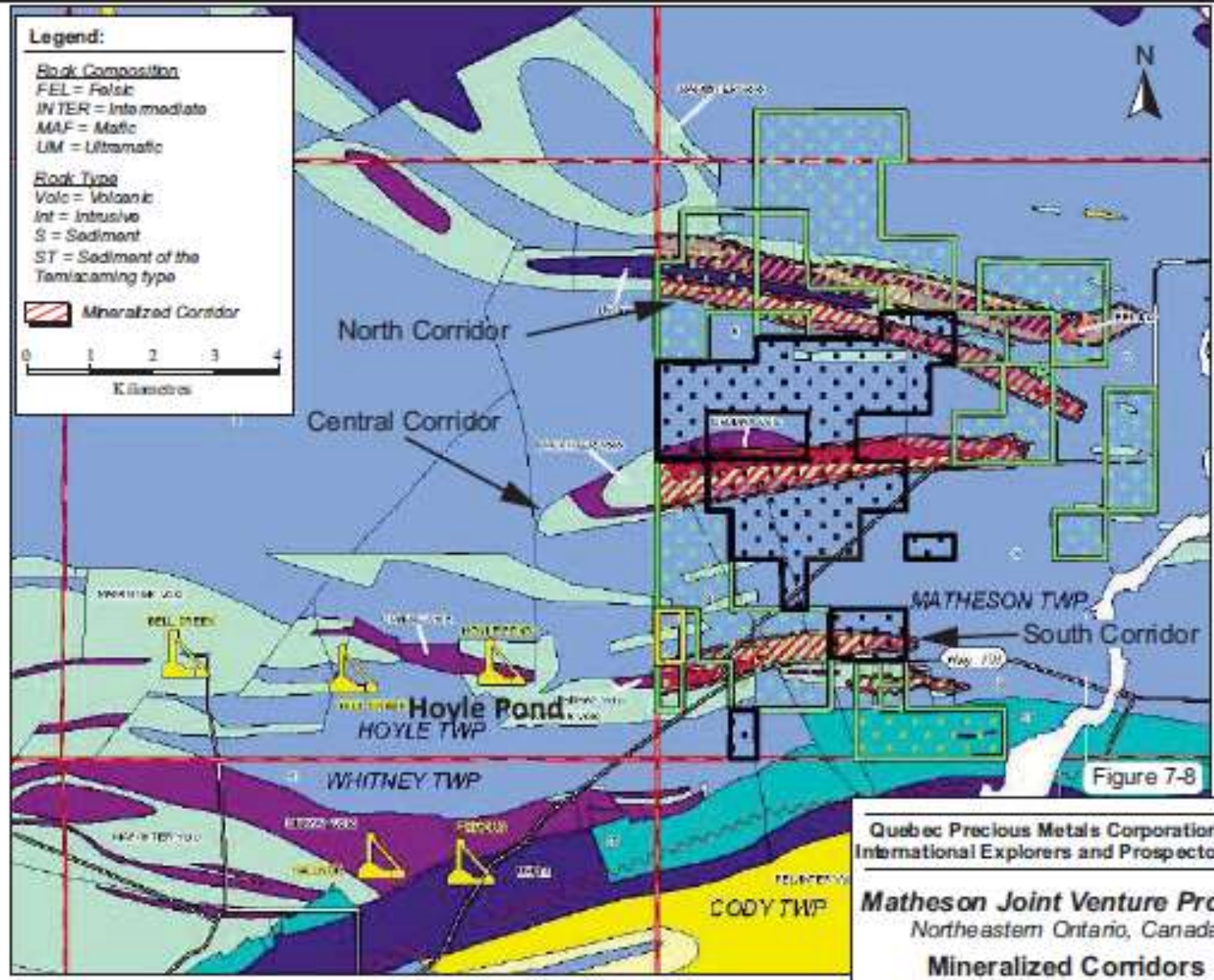


Figure 7-8

Quebec Precious Metals Corporation and International Explorers and Prospectors Inc.

**Matheson Joint Venture Project**  
 Northeastern Ontario, Canada  
**Mineralized Corridors**



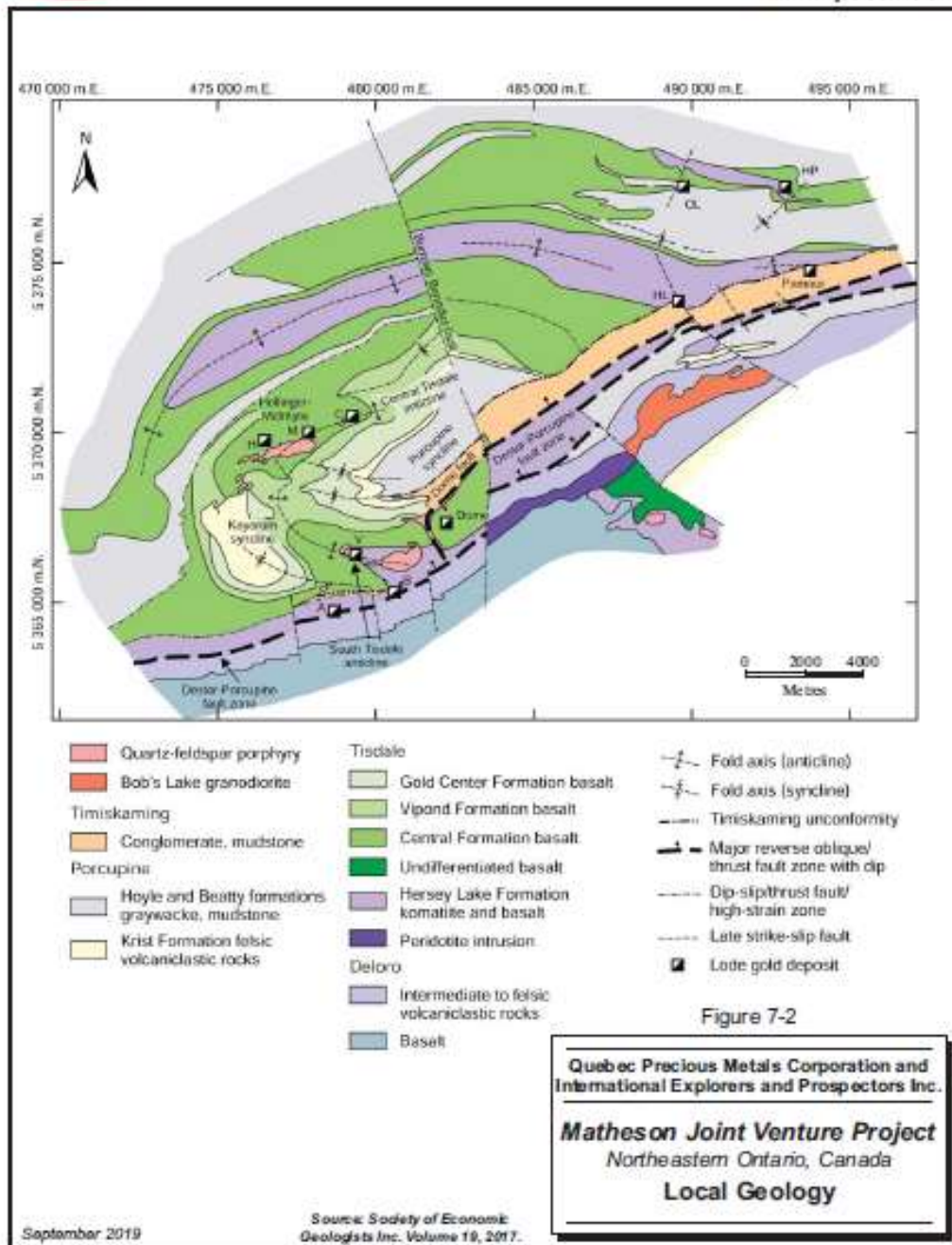


Figure 7-2

Quebec Precious Metals Corporation and International Explorers and Prospectors Inc.

**Matheson Joint Venture Project**  
 Northeastern Ontario, Canada  
**Local Geology**

23-8

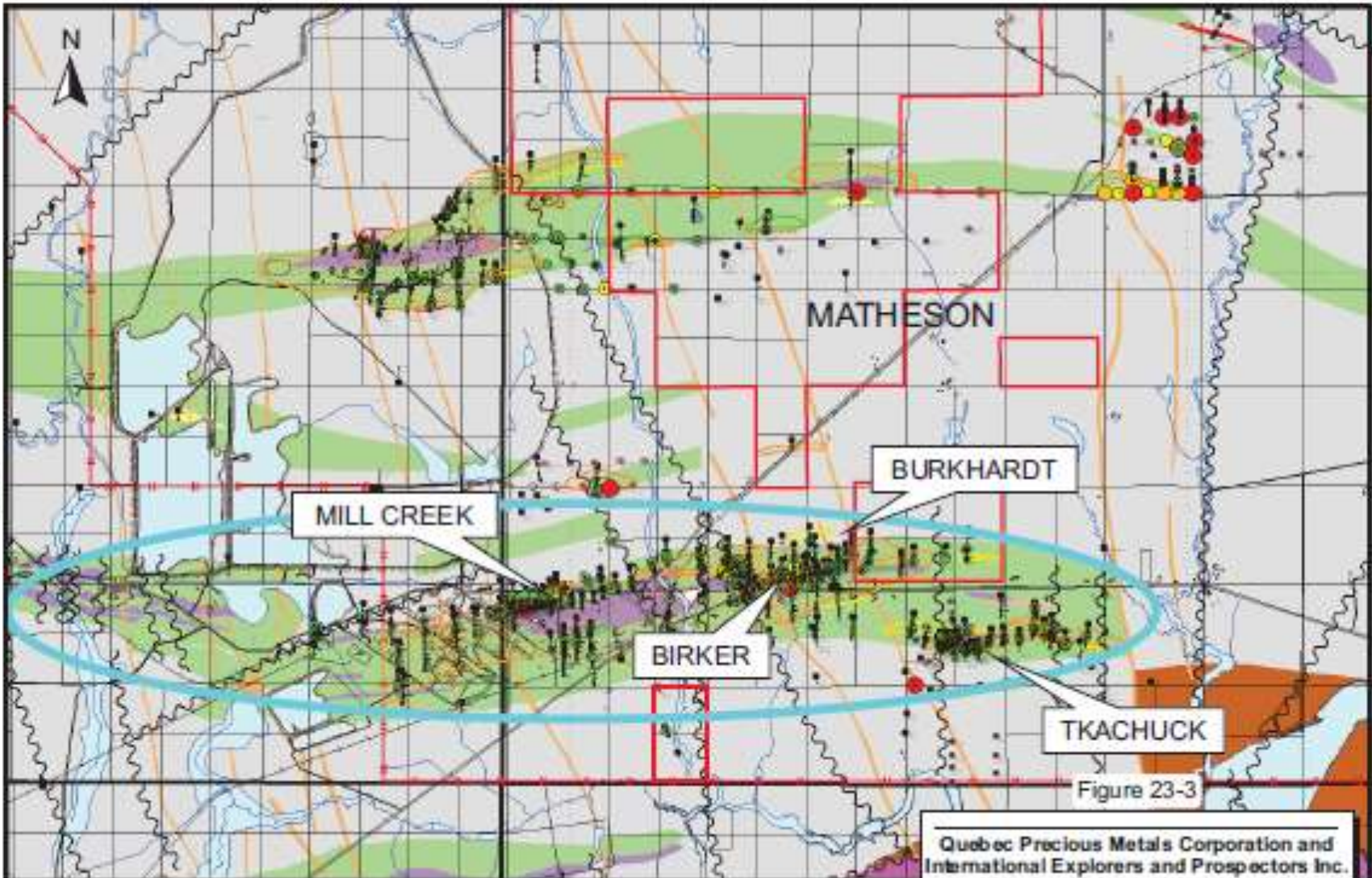
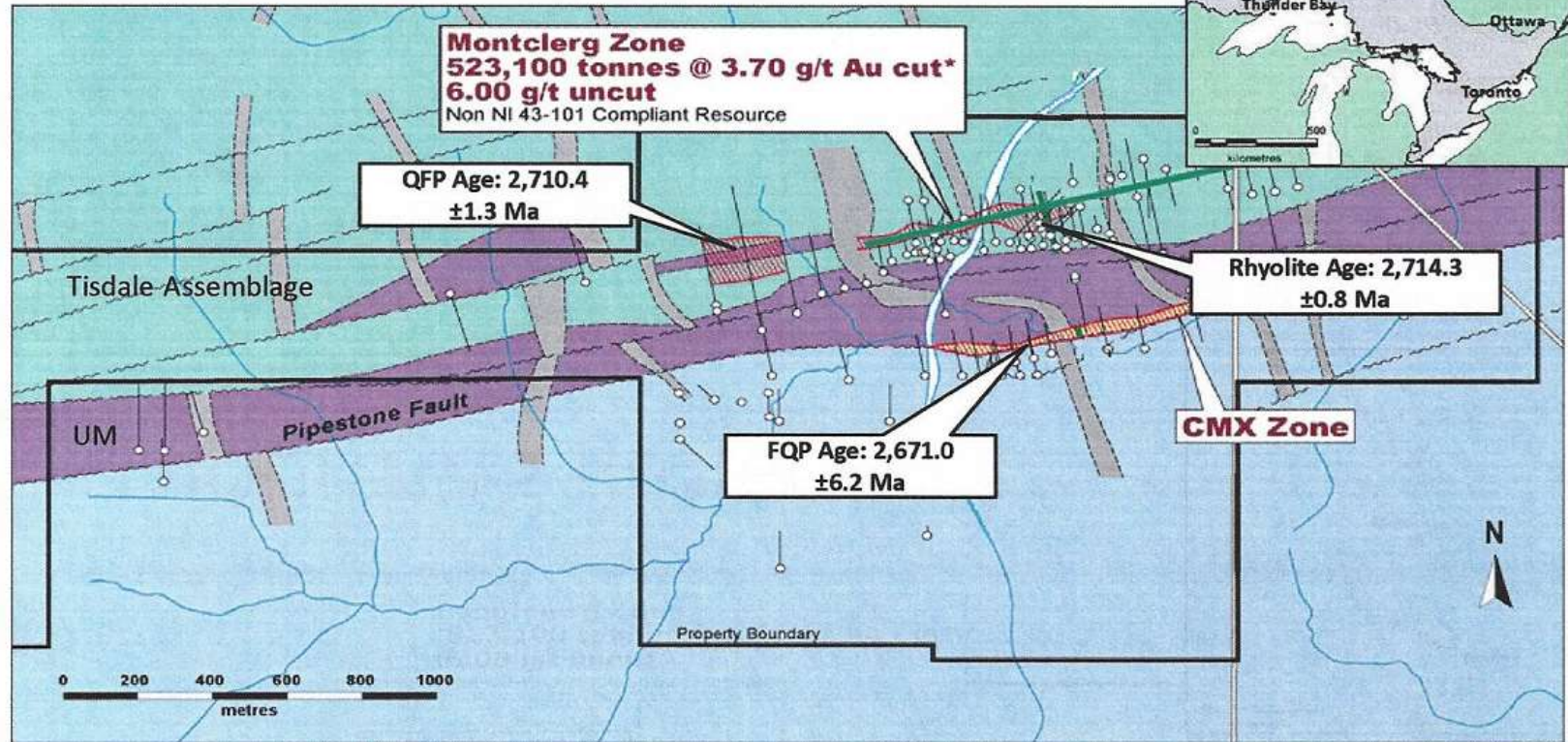


Figure 23-3



Quebec Precious Metals Corporation and  
International Explorers and Prospectors Inc.  
**Matheson Joint Venture Project**  
Northeastern Ontario, Canada  
**Mill Creek/Colbert Trend**

# Montclerg Project



- Mafic metavolcanic rocks
- Ultramafic rocks
- Felsic intrusive rocks
- Metasedimentary rocks
- Diabase
- Mineralized zone
- Diamond drill hole
- Fault

Note: Assays from public archives and drill logs.  
 \* Cut to 1.0 opt Au  
 (cut-off factor 0.10 opt / 6 feet)

Montclerg Project  
 Clergue Township, Timmins, Ontario  
**Property Geology**

Geology from Barrett, 2008; modified from Pentland-Firth 1999

See Note on last page concerning Historical and Non-Compliant Resources

# Longitudinal Section Prior to 2016 Program

\*Forward Looking Statement  
 30-60m spacing;  
 500m strike;  
 100m vertical; 75m width  
 Approx. 15.0 mil T @ 1.5g/t in  
 Pit; 740,000 oz

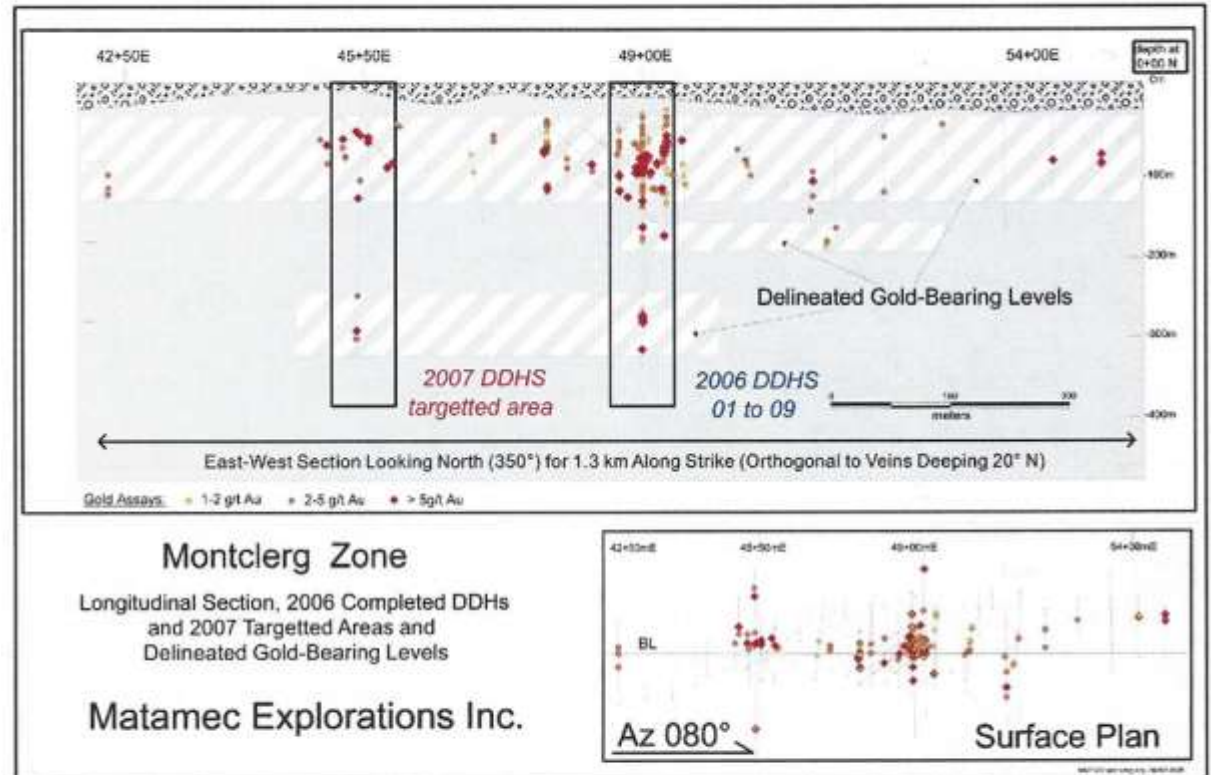
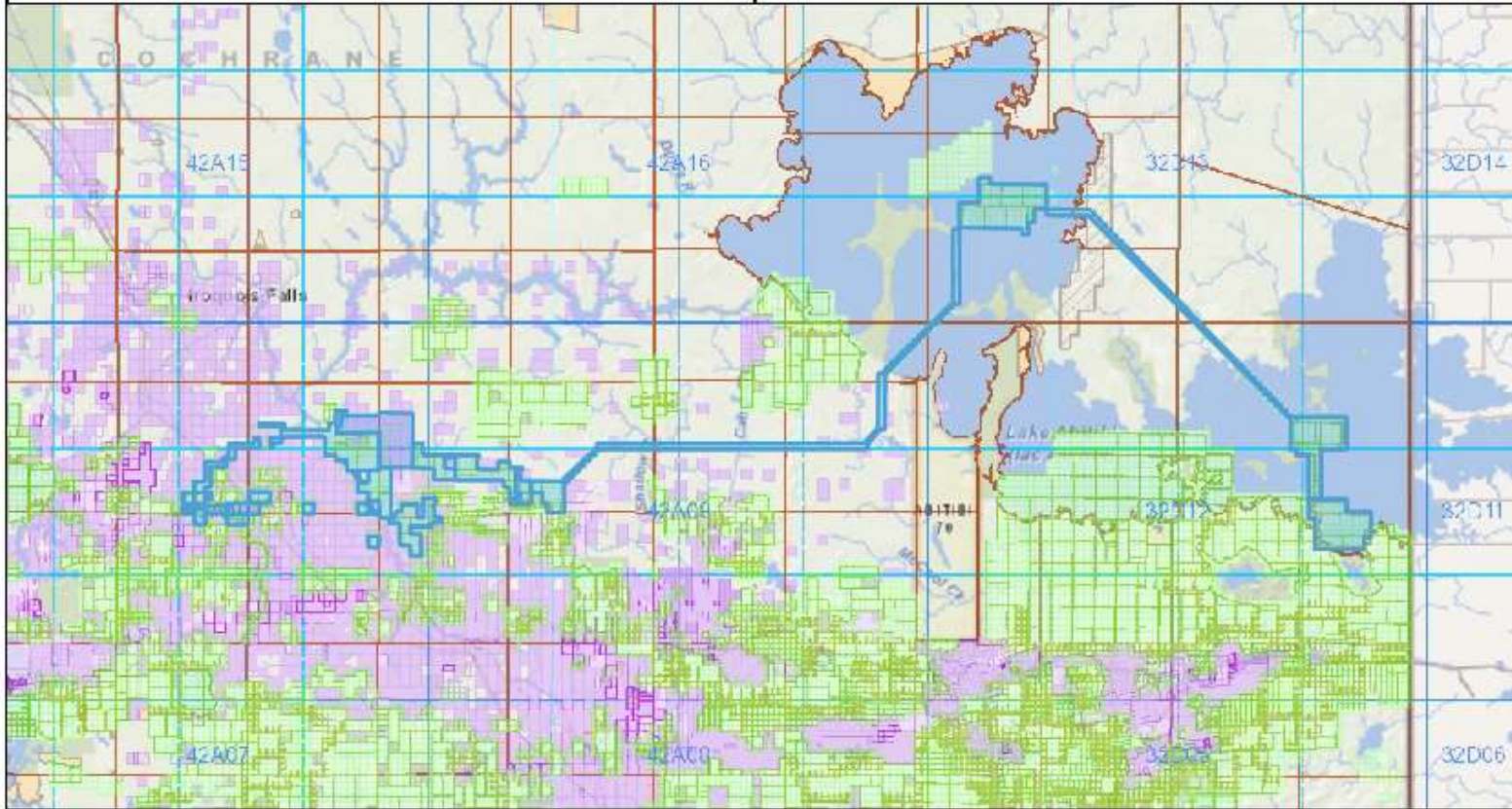
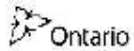


Figure 1-16. Longitudinal section through the Montclerg Zone at azimuth = 80°, looking north (Matamec Explorations Inc. 2007). The vertical rectangles centred at 4900E and 4550E outline the 2 areas drilled in 2006 and 2007, respectively. Chemostratigraphic relations on sections 4900E ("east of the river") and 4550E ("west of the river") are presented in Chapter 2.



- Legend test**
- Mining Claim
  - Mining Lease**
    - Surface Rights Only
    - Mining Rights Only
    - Surface and Mining Rights
  - Mining Licence of Occupation**
    - Surface Rights Only
    - Mining Rights Only
    - Surface and Mining Rights
  - Mining Patent**
    - Surface Rights Only
    - Mining Rights Only
    - Surface and Mining Rights
  - Boundary Claim**
    - Legacy Claim
    - Mining Claim - History
    - Mining Land Tenure - History
  - Mining Division
  - MNDM Townships and Areas
  - Provincial Grid 50K
  - Provincial Grid Group
  - Non-Mining Land Tenure**
    - Patent, Surface Rights Only
    - Patent, Mining Rights Only
    - Patent, Surface and Mining Rig
    - Lease, Surface Rights Only
    - Lease, Mining Rights Only
    - Lease, Surface and Mining Rig
    - Water Power Lease Agreement

0 19.37 km

The Ontario Ministry of Northern Development and Mines shall not be liable in any way for the use of, or reliance upon, this map or any information on this map. This map should not be used for navigation, a plan of survey, routes, nor locations.

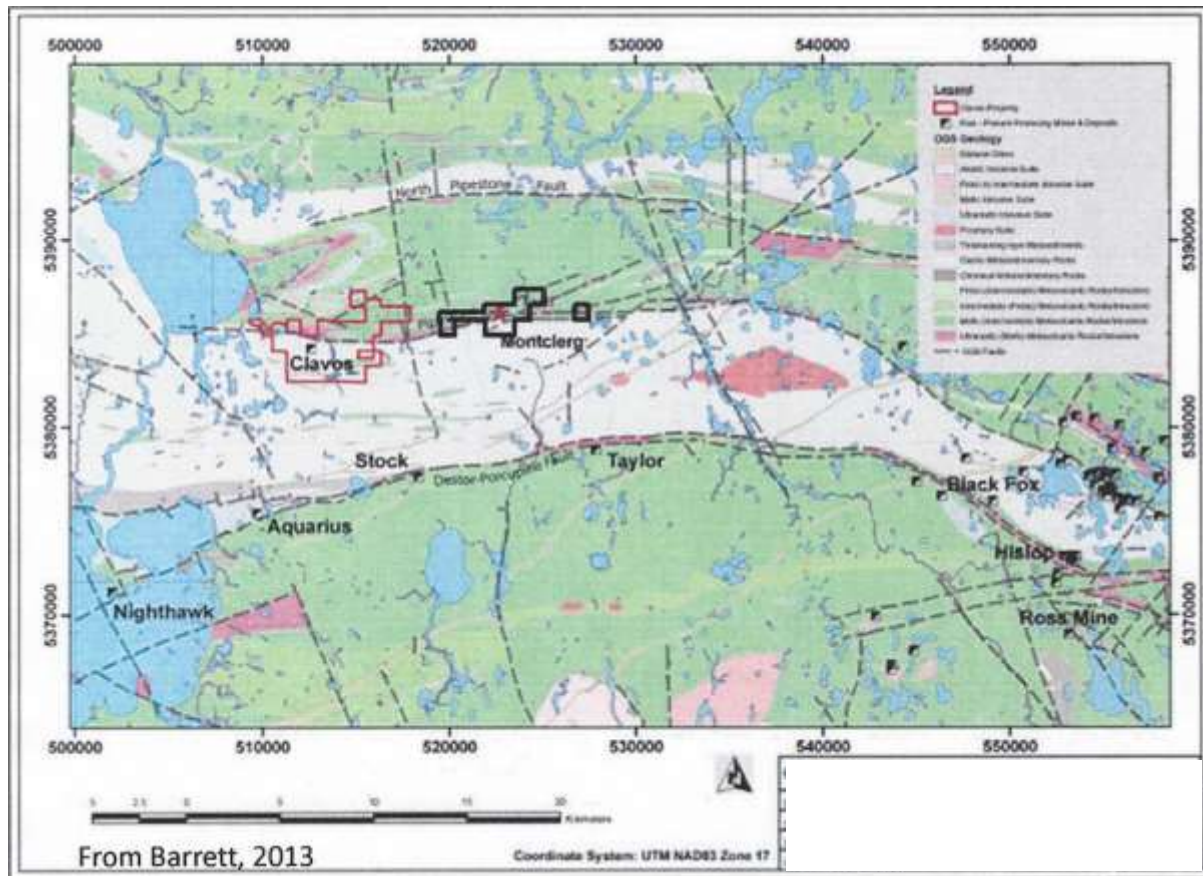
© Queen's Printer for Ontario, 2018

Projection: Web Mercator

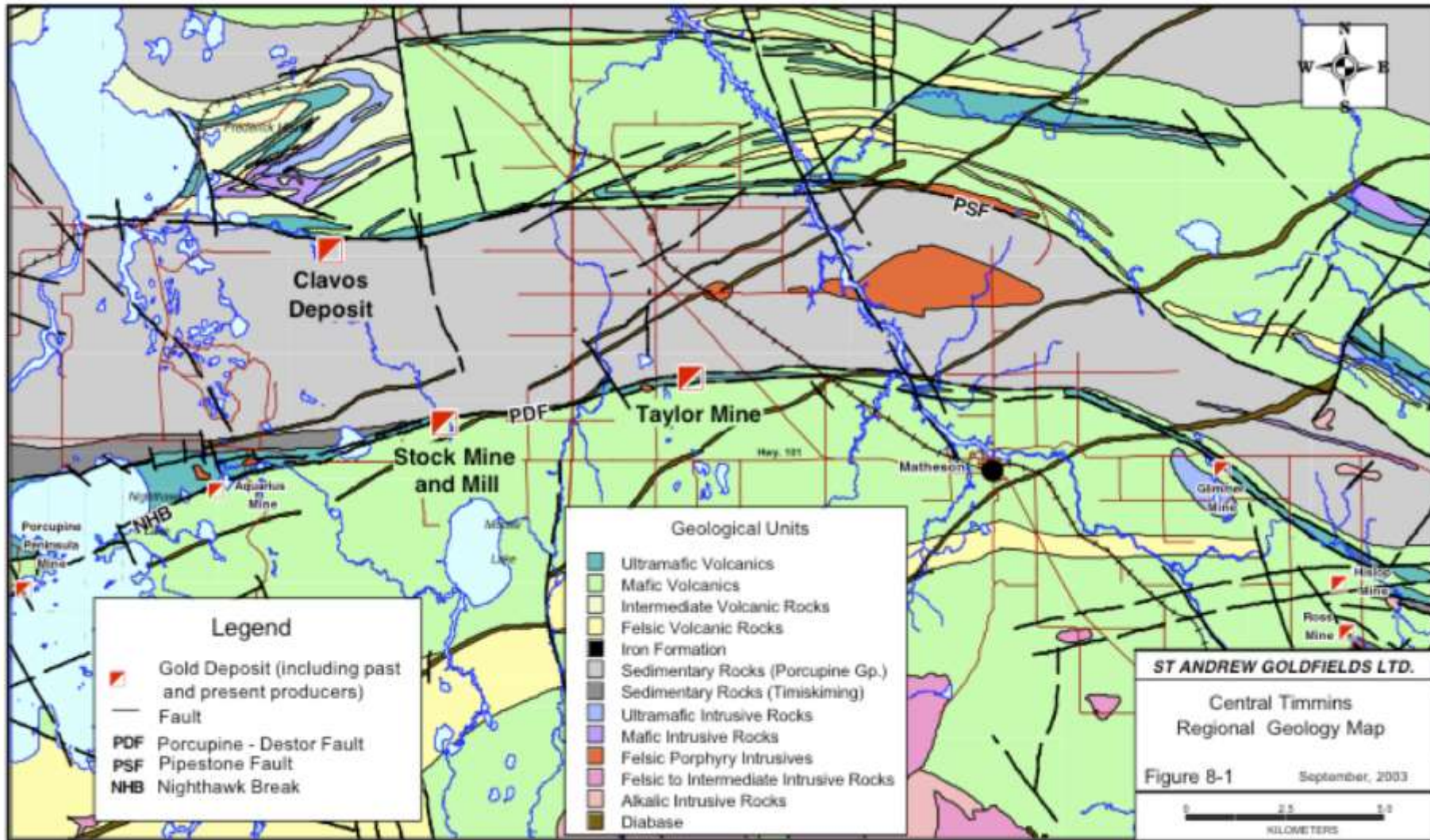
Imagery Copyright Notices: Ontario Ministry of Natural Resources and Forestry; NASA Landsat Program; First Base Solutions Inc.; Aéro-Photo (1961) Inc.; DigitalGlobe Inc.; U.S. Geological Survey.



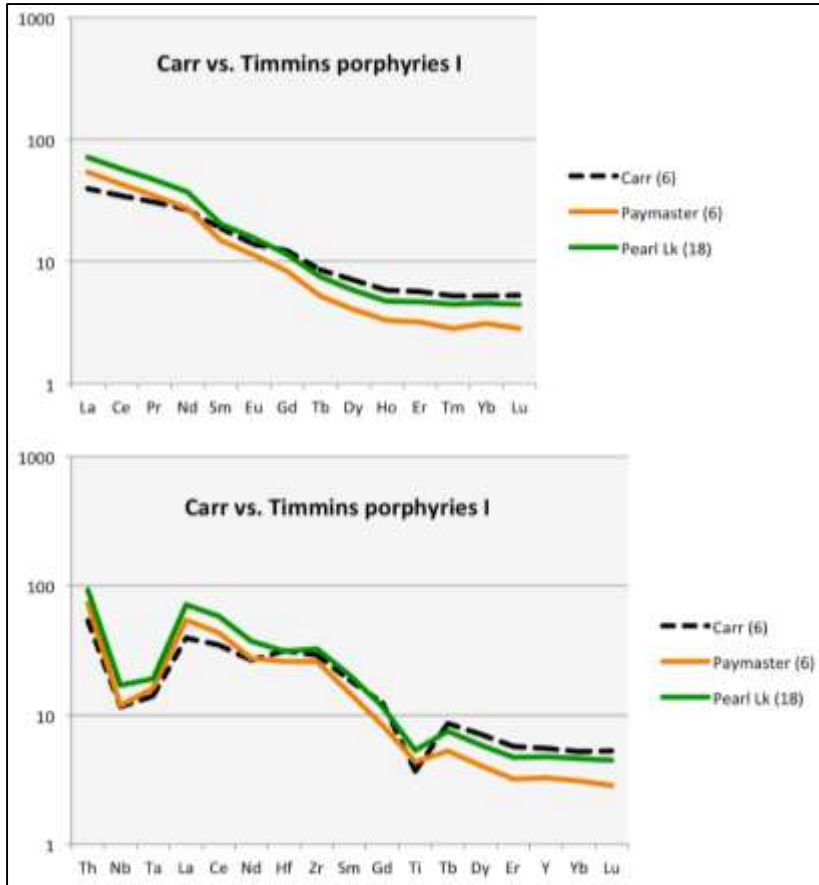
# Montclerg to Coulson



MRD 300 figure 1.3



# Lithogeochemistry and Petrography of Carr Porphyry



PMC-3. Pinky-beige-altered QF porphyry with carbonate-chlorite vein at 139.0m



# Stoughton Project



Syenite



UM –Syenite contact



QFP

# NWNW Quebec Ore Deposits

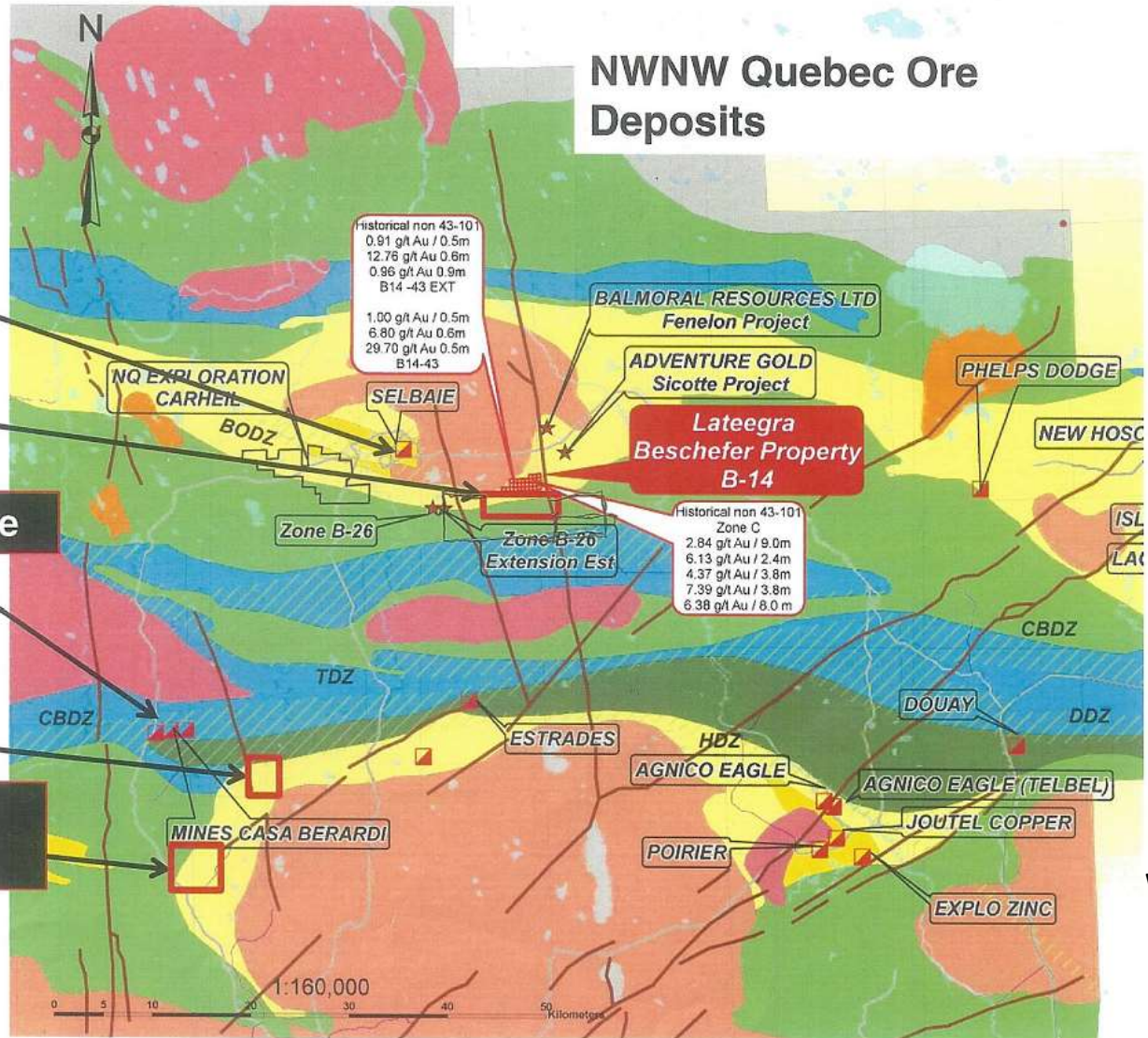
Selbaie Mine

Beschefer

Casa Berardi Mine

Casa Berardi "Grid 4"

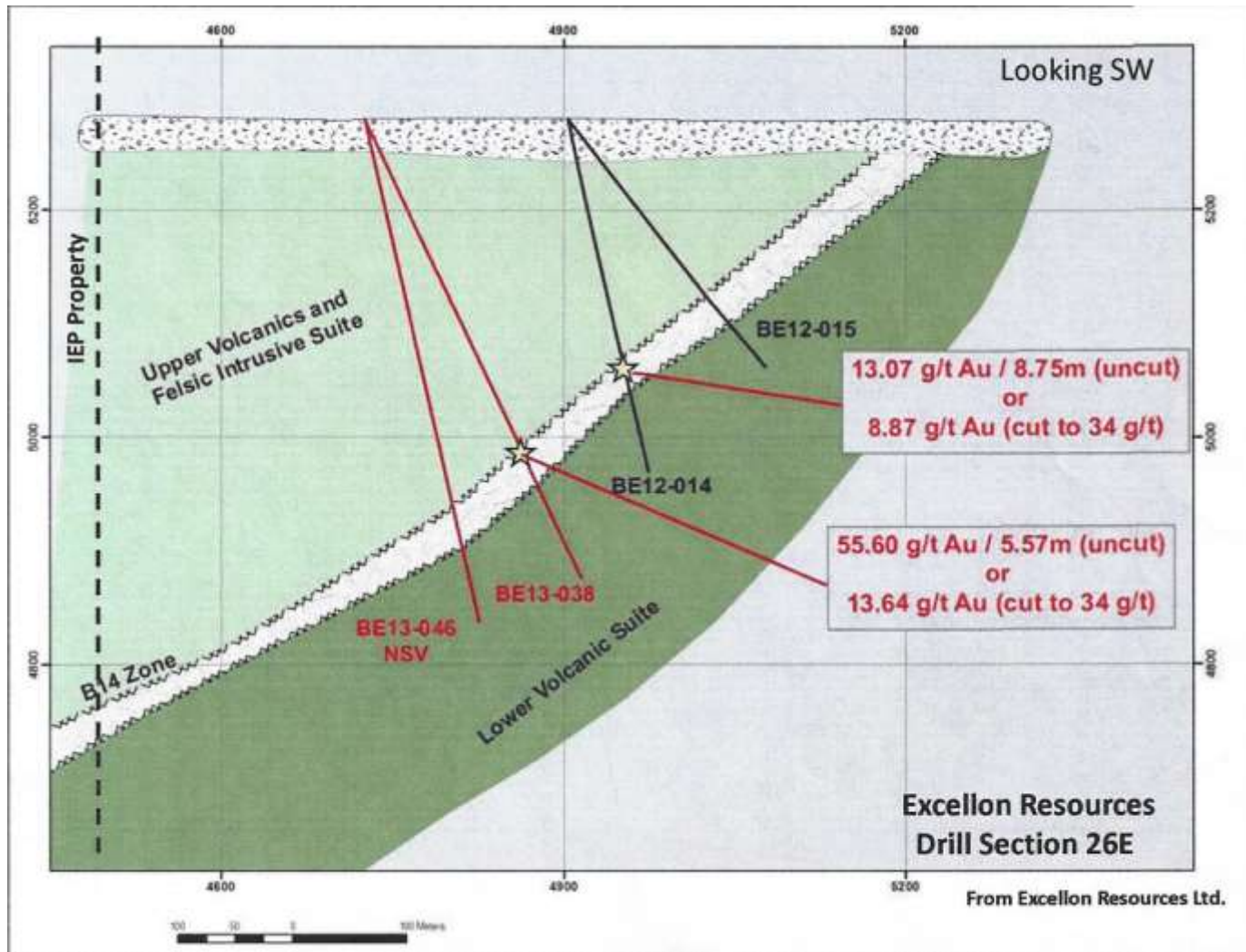
Casa Berardi "Grids 1, 2, and 3"



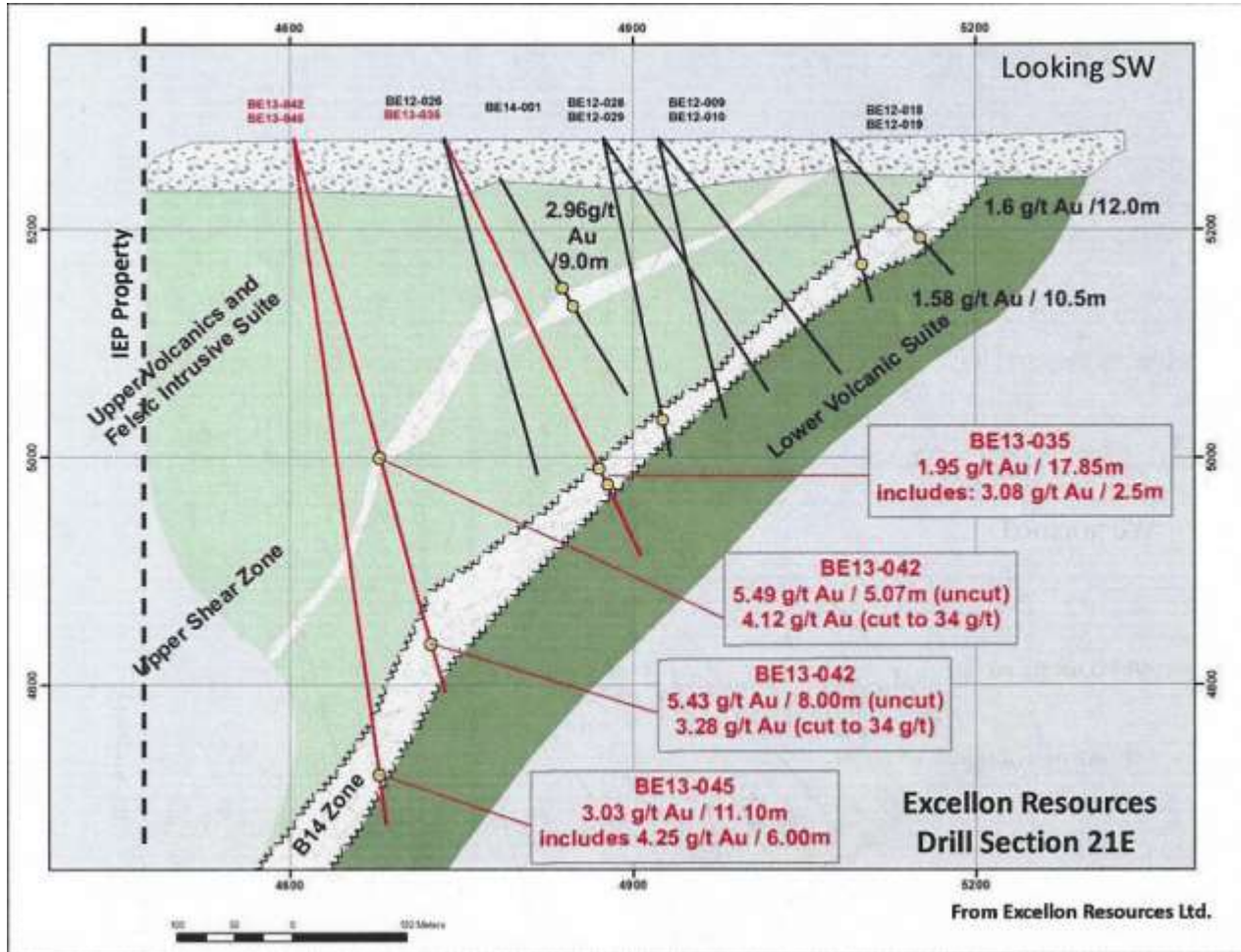
Osisko Windfall Project



# Beschefer Drill Section 26E



# Beschefer Drill Section 21E



# Casa-Berardi Twp

Quartz,  
fuschite,  
sericite, py,  
tourm in  
mafics in  
proximity  
to QFP



# Acknowledgements

Tim Barrett	Ore Systems Consulting
John Ayer	MERC/Metal Earth
Patrick Langevin-Mercier	GSC
Benoit Dube	GSC
Ed van Hees	MNDM
Peter Colbert	Entrepreneur/Explorer
Bill Schweng	WTS Technical Services

[Internationalexplorersandprospectors.com](http://Internationalexplorersandprospectors.com)

# Special Thanks to our Exploration Service Providers



## Laboratoire Expert Inc.

127, Boulevard Industriel  
Rouyn-Noranda, Québec  
Canada, J9X 6P2  
Téléphone : (819) 762-7100, Télécopieur : (819) 762-7510