

Central South Dakota (Jones County, Murdo)

Land

Auction

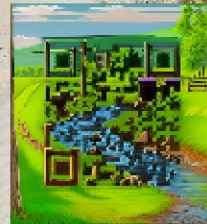
957 +/- Acres - Offered in 2 Tracts

Monday, February 12, 2024 at 1:00 P.M. CST

(REGISTRATION AT 12:00 NOON)

LIVE & ONLINE BIDDING AVAILABLE

Auction held at White River, SD
at Sweet Spot America Convention Center
along Hwy 83 (1125 Boardwalk)



SCAN TO WEBSITE



Brad Gran
Auctioneer
605-208-5671
granauctions.com

shippyrealty.com



605-842-3212

Lin Shippy 605-351-4656
Rick Shippy 605-840-2735
Steve Steinke 605-999-5559



Charles & Shaw-Ree Lebeda

TRACT 1 BOOK

TRACT 2: Pasture/Cropland/Building site, (+/- 797 acres, around 44 acres of cropland), pasture with dugouts with Lyman-Jones rural water and electricity on building site.



 Boundary  Stream, Intermittent  River/Creek  Water Body



Soil Report

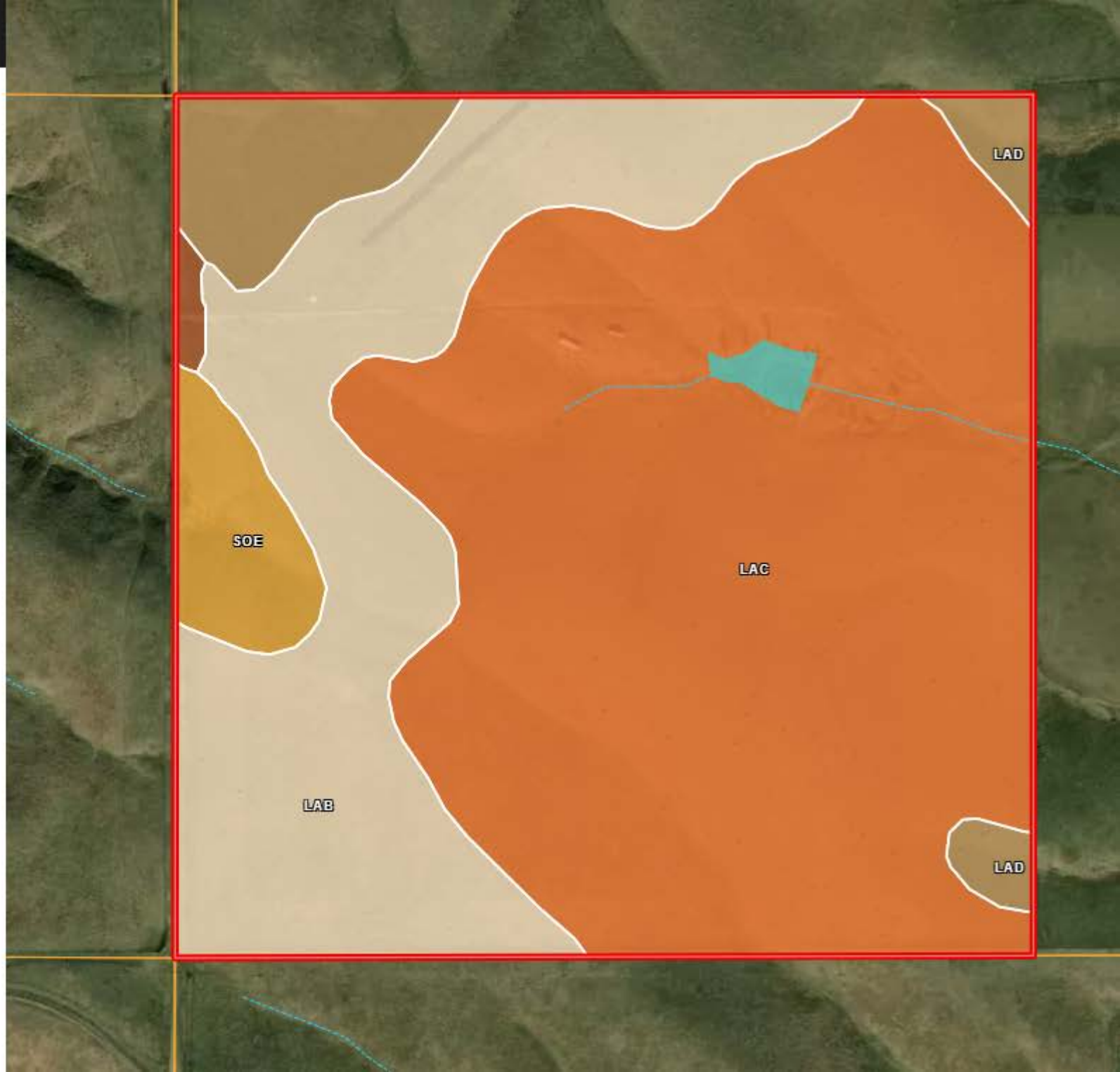
Acres

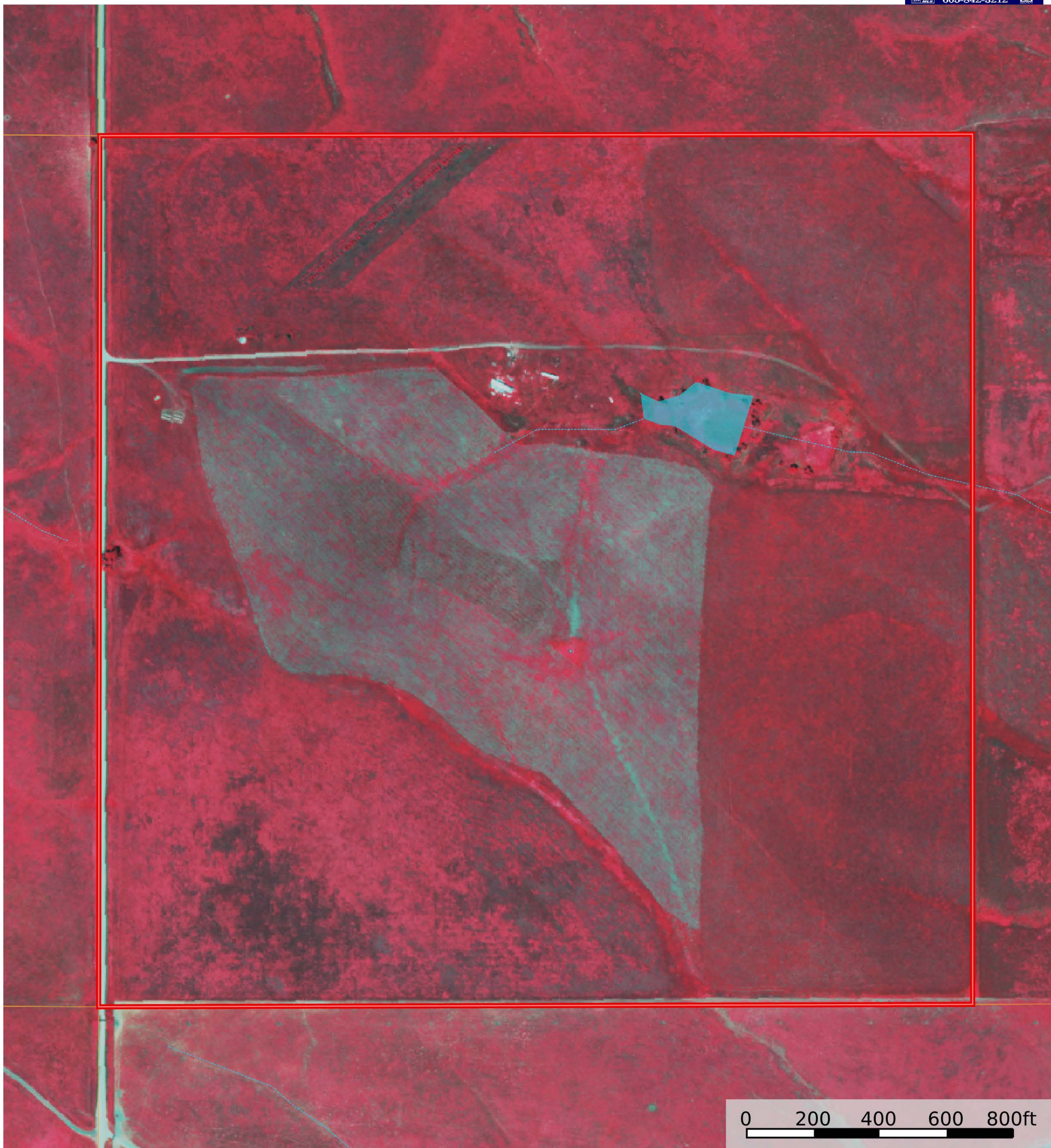
Capabilities

WAPI

Boundary: 158.59 ac

Code	Description	Acres	%	CPI	NCCPI	CAP	?
LaC	Lakoma silty clay, 6 to 9 percent slopes	97.77	61.65%	45	21	6e	?
LaB	Lakoma silty clay, 3 to 6 percent slopes	43.5	27.43%	53	25	3e	?
LaD	Lakoma silty clay, 6 to 15 percent slopes	10.41	6.56%	43	22	6e	?
SoE	Sansarc-Opal clays, 9 to 25 percent slopes	6.15	3.88%	22	13	7e	?
OpB	Opal clay, 3 to 6 percent slopes	0.76	0.48%	60	20	3e	?
Totals 158.59 ac ?		46.24 CPI Average	21.85 NCCPI Average	5.2 Cap. Average			





 Boundary  Stream, Intermittent  River/Creek  Water Body