

Central South Dakota (Jones County, Murdo)

Land Auction

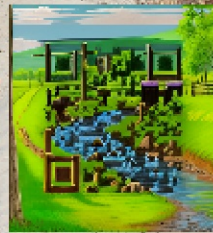
957 +/- Acres - Offered in 2 Tracts

Monday, February 12, 2024 at 1:00 P.M. CST

(REGISTRATION AT 12:00 NOON)

LIVE & ONLINE BIDDING AVAILABLE

Auction held at White River, SD
at Sweet Spot America Convention Center
along Hwy 83 (1125 Boardwalk)



SCAN TO WEBSITE



Brad Gran
Auctioneer
605-208-5671
granauctions.com

shippyrealty.com

**SHIPPY
REALTY
& AUCTION**

605-842-3212

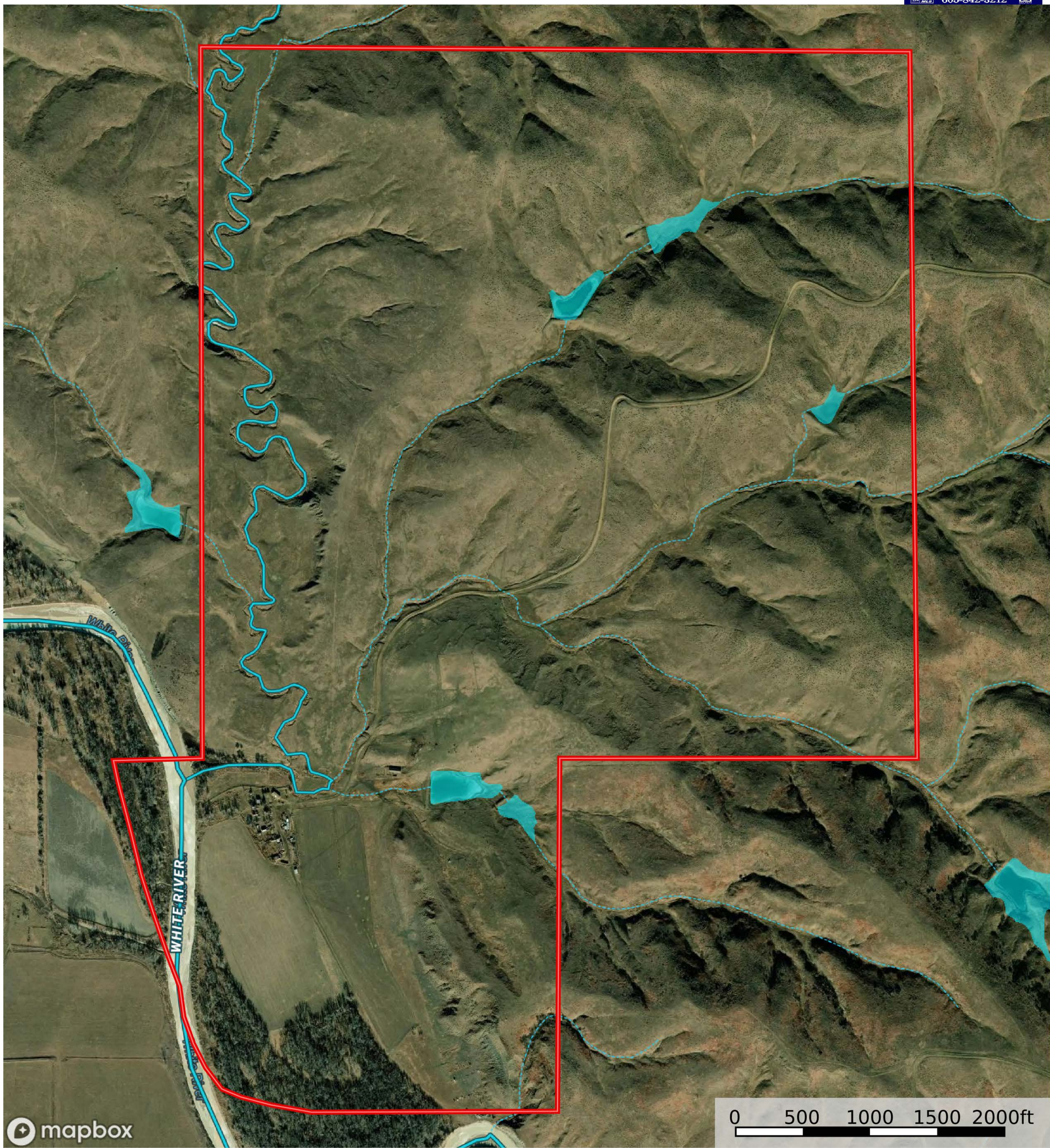
Lin Shippy 605-351-4656
Rick Shippy 605-840-2735
Steve Steinke 605-999-5559



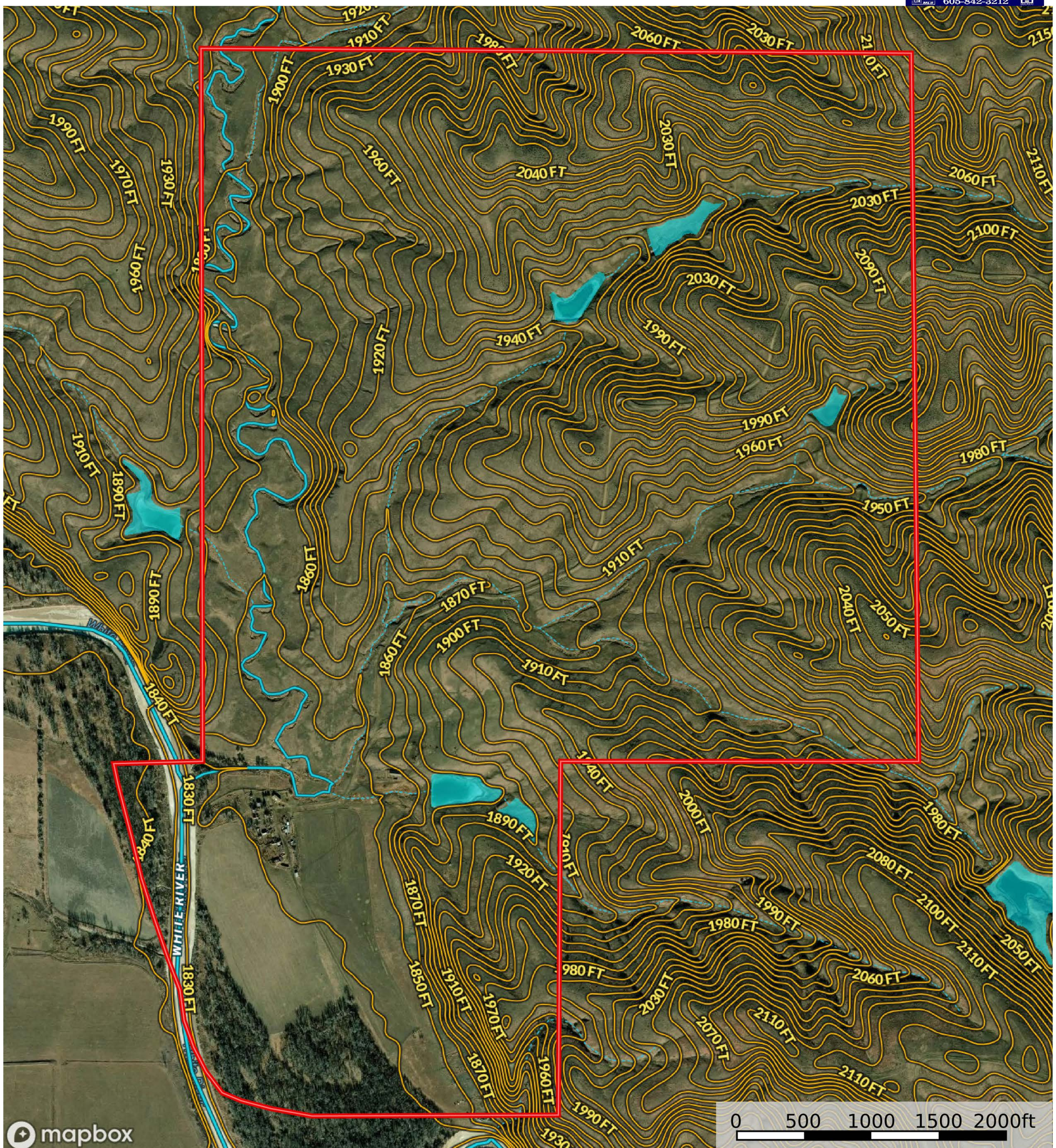
Charles & Shaw-Ree Lebeda

TRACT 2 BOOK

TRACT 2: Pasture/Cropland/Building site, (+/- 797 acres, around 44 acres of cropland), pasture with dugouts with Lyman-Jones rural water and electricity on building site.



- Boundary
- Stream, Intermittent
- River/Creek
- Water Body



Soil Report

Acres **Capabilities** **WAPI**

Code	Description	Acres	%	CPI	NCCPI	CAP	?
ObE	Okaton-Lakoma silty clays, 15 to 40 percent slopes	345.15	42.14%	14	9	7e	?
LaD	Lakoma silty clay, 6 to 15 percent slopes	179.59	21.92%	43	22	6e	?
OkE	Okaton-Wendte-Bullcreek complex, 0 to 45 percent slopes	118.42	14.46%	15	14	7e	?
Bb	Bigbend silt loam	44.43	5.42%	81	36	2c	?
SoE	Sansarc-Opal clays, 9 to 25 percent slopes	41.26	5.04%	22	13	7e	?
OaF	Okaton silty clay, 6 to 40 percent slopes	36.86	4.5%	10	3	7e	?
HiA	Hilmoe silty clay, 0 to 3 percent slopes, rarely flooded	29.29	3.58%	70	39	2s	?
Bf	Bigbend silt loam, flooded	9.17	1.12%	32	24	6w	?
Bg	Inavale and Munjor soils	8.64	1.05%	50	24	4e	?
W	Water	5.94	0.73%	-	-	8	?
Mn	Bigbend silt loam	0.36	0.04%	81	36	2c	?

Totals
819.11 ac **26.87 CPI Average** **15.31 NCCPI Average** **6.29 Cap. Average**

