

Lighting & Electrical

# Supply Catalog

# Tailored Energy Connection 2026 Catalog

**VISIT US ONLINE**  
[www.tailored-energy.com](http://www.tailored-energy.com)

LIGHTING THE WAY TO  
SMARTER BUSINESS  
SOLUTIONS

[HOME](#) [ABOUT US](#) [SERVICES](#) [CONTACT](#) [MORE ▾](#)



## WHO IS TAILORED ENERGY CONNECTION?



A partner you can trust.

At Tailored Energy, we empower businesses to optimize their energy usage through innovative solutions. We believe that effective energy management not only reduces costs but also contributes to a sustainable future.

## Call Us!

We're experienced lighting professionals that  
can't wait to talk lighting with you.

**330-933-6247**

To request quotes, layouts, or rebate  
assistance, contact your Tailored Energy  
Connection representative.

# 04 OUTDOOR

AREA LIGHTS  
FLOOD LIGHTS  
LIGHT POLES  
BOLLARDS  
CANOPY LIGHTS  
DUSK-TO-DAWN  
WALL PACKS

# 20 LIFE SAFETY

EXIT SIGNS  
EMERGENCY LIGHTING  
EMERGENCY COMBOS  
POWER SYSTEMS

# 10 INDOOR

HIGHBAYS  
STRIP LIGHTS  
WRAP LIGHTS  
STAIRWELL  
VAPOR TIGHT  
LED REPLACEMENT TUBES  
UNDERCABINET LIGHTS  
CEILING PANEL LIGHTS  
RECESSED DOWNLIGHTS  
FLAT PANEL  
RECESSED CANS & TRIMS  
DISK LIGHTS

# 24 ACCESSORIES

SENSORS  
DIMMERS  
SWITCHES  
RECEPTACLES  
WIRE CONNECTORS  
GOOF RINGS  
CABLE TIES

## MULTI-PURPOSE AREA LIGHT PRO

- Field selectable output and color temperature
- Distribution Type III or Type V
- Universal voltage 120-277V or 277-480V
- 0-10v dimming
- Power factor >0.90
- CRI >80
- Optional NEMA photocell
- L70 = 162,000 hours



Mounting	
08-MPAL-ARM	Arm Mount
08-MPAL-ARM-A	Adjustable Arm
08-MPAL-SF	Slip-fitter
08-MPAL-TM	Trunnion
08-MPALPRO-YM	Yoke



Product Number	Selectable Lumen Output**	Watts*	Efficacy*	Selectable CCT	Length (in)	Width (in)	Height (in)
08-MPALPRO-24L-LKFS	26,598 lumens	178	150 lm/W	3000K/4000K/5000K	17"	12"	4"
	22,824 lumens	146	156 lm/W				
	16,173 lumens	100	162 lm/W				
08-MPALPRO-40L-LKFS	44,173 lumens	284	156 lm/w	3000K/4000K/5000K	23.5"	12"	4"
	37,248 lumens	232	160 lm/W				
	32,211 lumens	198	163 lm/W				

## MULTI-PURPOSE AREA LIGHT

- Field selectable color temperature
- Universal voltage 120-277V
- 0-10v dimming
- Power factor >0.90
- CRI >80
- L70 = 149,000 hours



Mounting	
08-MPAL-KFS-YKL	Yoke mount (4L & 7L)
08-MPOST17	Line Voltage Ground Stake
07-CM-R	Round Canopy Mounting Plate



Product Number	Selectable Lumen Output*	Watts*	Efficacy*	Selectable CCT	Length (in)	Width (in)	Height (in)
08-MPAL-2L-KFS	2,180 lumens	15	145 lm/W	3500K/4000K/5000K	4.3"	1.7"	5.8"
08-MPAL-4L-KFS	4,695 lumens	30	155 lm/w	3500K/4000K/5000K	8.7"	1.9"	9"
08-MPAL-7L-KFS	7,170 lumens	49	147 lm/W	3500K/4000K/5000K	8.7"	1.9"	9"

## BULLET FLOOD LIGHT

- Field selectable output and color temperature
- Universal voltage 120-277V
- 0-10v dimming
- Power factor >0.90
- CRI >70
- L70 = 151,000 hours
- Built in photocell
- Beam angle 3H3V distribution



Mounting	
08-MPOST17	Line Voltage Ground Stake
07-CM-R	Round Canopy Mounting Plate



Product Number	Selectable Lumen Output*	Watts*	Efficacy*	Selectable CCT	Length (in)	Width (in)	Height (in)
08-BF-453730L-3CCT	3,187 lumens	20	161 lm/W	3000K/4000K/5000K	6.4"	5.5"	8.9"
	4,008 lumens	25	158 lm/W				
	5,064 lumens	33	152 lm/W				

## ASK ABOUT LIGHT POLES

We supply a range of durable poles to enhance any outdoor space!

Square and round styles  
Up to 30 ft  
Steel, Aluminum, and Direct Burial



## LIGHT POLE BRACKETS

Call a representative for more information!

- |                           |                       |
|---------------------------|-----------------------|
| Bullhorns                 | Low Profile Bullhorns |
| Spoke Brackets            | Pole Side Brackets    |
| Wall Mount Brackets       | Cantilever Brackets   |
| Wrap Around Pole Brackets | Upsweep Brackets      |

## HIGH LUMEN BULLET FLOOD LIGHT

- Universal voltage 120-277V
- 0-10v dimming
- Power factor >0.90
- CRI >70
- L70 = 83,000 hours
- Beam angle 3H3V distribution



Mounting	
08-MPOST17	Line Voltage Ground Stake
07-CM-R	Round Canopy Mounting Plate



Product Number	Lumen Output	Watts*	Efficacy*	CCT	Length (in)	Width (in)	Height (in)
08-BFHL-9L-5K	9096 lumens	82	110.5 lm/W	5000K	8.5"	6"	9.3"

## UFO HEAD BOLLARD LIGHT

- Field selectable output and color temperature
- Universal voltage 120-277V
- 0-10v dimming
- Power factor >0.90
- CRI >70
- L70 = 192,000 hours
- Black and Bronze housing colors available



Mounting	
08-BOL-R-MTGKIT	Anchor Bolt for Round Bollard



Product Number	Selectable Lumen Output*	Watts*	Efficacy*	Selectable CCT	Base Width (in)	Head Width (in)	Height (in)
08-BOL-UFO-302317L-3CCT	3,019 lumens	23	131 lm/W	3000K/4000K/5000K	6"	10"	42"
	2,385 lumens	18	134 lm/W				
	1,770 lumens	13	135 lm/W				

## BOLLARD LIGHTS - FLAT TOP

- Field selectable output and color temperature
- Universal voltage 120-277V
- 0-10v dimming
- Power factor >0.90
- CRI >80
- L70 = 163,000 hours
- Black and Bronze housing colors available



Mounting	
08-BOL-R-MTGKIT	Anchor Bolt for Round Bollard
08-BOL-S-MTGKIT	Anchor Bolt for Square Bollard



Product Number	Selectable Lumen Output*	Watts*	Efficacy*	Selectable CCT	Length (in)	Width (in)	Height (in)
08-BOL-R-3L-LKFS	3,244 lumens	22	145 lm/W	3000K/4000K/5000K	6"	6"	42"
	2,686 lumens	19	145 lm/W				
	1,974 lumens	14	144 lm/W				
08-BOL-S-3L-LKFS	3,047 lumens	23	135 lm/w	3000K/4000K/5000K	6"	6"	42"
	2,450 lumens	18	135 lm/W				
	1,790 lumens	14	130 lm/W				

## BOLLARD LIGHTS - DOME TOP

- Field selectable output and color temperature
- Universal voltage 120-277V
- 0-10v dimming
- Power factor >0.90
- CRI >80
- L70 = 163,000 hours
- Black and Bronze housing colors available



Mounting	
08-BOL-R-MTGKIT	Anchor Bolt for Round Bollard



Product Number	Selectable Lumen Output*	Watts*	Efficacy*	Selectable CCT	Length (in)	Width (in)	Height (in)
08-BOL-RD-3L-LKFS	3,249 lumens	22	145 lm/W	3000K/4000K/5000K	6"	6"	44"
	2,530 lumens	17	145 lm/W				
	1,818 lumens	12	150 lm/W				
08-BOL-RDL-2L-LKFS	1,692 lumens	22	75 lm/W	3000K/4000K/5000K	6"	6"	44"
	1,351 lumens	17	80 lm/W				
	973 lumens	12	80 lm/W				

## RECESSED CANOPY LIGHT

- Universal voltage 120-277V
- 0-10Vdc dimming
- Power factor >0.90
- CRI >80
- L70 = 167,000 hours



Product Number	Selectable Lumen Output*	Watts*	Efficacy*	CCT	Length (in)	Width (in)	Height (in)
07-CP-11L-5K	10,400 lumens	78	132 lm/W	5000K	16.8"	16.8"	3"

## CANOPY LIGHT

- Field selectable output and color temperature
- Universal voltage 120-277V
- 0-10Vdc dimming
- Power factor >0.90
- CRI >80
- Optional factory installed microwave and dimming sensors
- L70 = 149,000 hours
- Available in White or Bronze finish



Product Number	Selectable Lumen Output*	Watts*	Efficacy*	Selectable CCT	Length (in)	Width (in)	Height (in)
07-CP-10L-LKFS	10,500 lumens 8,250 lumens 6,950 lumens	69 51 43	150 lm/W 160 lm/W 165 lm/W	3000K/4000K/5000K	10.5"	9.6"	3.4" (with sensor)

## DUSK-TO-DAWN LIGHT

- Universal voltage 120-277V
- Power factor >0.90
- CRI >80
- L70 = 163,000 hours
- NEMA photocell standard
- Polycarbonate lens



Mounting	
08-LED-DDALS-N-ARM	Mounting arm with bracket



Product Number	Lumen Output	Watts	Efficacy	CCT	Length (in)	Width (in)	Height (in)
08-DDAL-5L-5k-PC	4,900 lumens	37	133 lm/W	5000K	10"	7"	6"

\*Nominal values shown for CCT set at 4000K



### TRADITIONAL WALL PACK

- Field selectable output and color temperature
- Universal voltage 120-277V
- Power factor >0.90
- CRI >70
- Glass lens
- Optional photocell
- L70 = 130,000 hours



Product Number	Selectable Lumen Output*	Watts*	Efficacy*	Selectable CCT	Length (in)	Width (in)	Height (in)
07-WPT-7L-LKFS	7,290 lumens 5,853 lumens 4,668 lumens	49 38 29	149 lm/W 150 lm/W 151 lm/W	3000K/4000K/5000K	14"	9"	5"
07-WPT-10L-LKFS	10,652 lumens 8,785 lumens 6,741 lumens	74 57 42	144 lm/W 154 lm/W 159 lm/W	3000K/4000K/5000K	14"	9"	5"
07-WPT-15L-LKFS	15,552 lumens 13,506 lumens 10,548 lumens	110 91 69	141 lm/W 149 lm/W 153 lm/W	3000K/4000K/5000K	14"	9"	5"

### ADJUSTABLE WALL PACK

- Field selectable output and color temperature
- Universal voltage 120-277V
- Power factor >0.90
- CRI >80
- Polycarbonate lens
- L70 = 146,000 hours
- Optional photocell



Product Number	Selectable Lumen Output*	Watts*	Efficacy*	Selectable CCT	Length (in)	Width (in)	Height (in)
07-WPA-5L-LKFS	5,084 lumens 3,842 lumens 3,002 lumens	34 25 20	151 lm/W 151 lm/W 154 lm/W	3000K/4000K/5000K	6.5"	4"	8"
07-WPA-10L-LKFS	10,734 lumens 9,032 lumens 7,028 lumens	71 59 45	150 lm/w 153 lm/W 157 lm/W	3000K/4000K/5000K	8.5"	5"	11"

### ECONOMY/SMALL WALL PACK

- Field selectable output and color temperature
- Universal voltage 120-277V
- Power factor >0.90
- CRI >80
- Polycarbonate lens
- Built in photocell
- L70 = 156,000 hours



Product Number	Selectable Lumen Output*	Watts*	Efficacy*	Selectable CCT	Length (in)	Width (in)	Height (in)
07-WPE-3L-LKFS	3,327 lumens 2,709 lumens 2,090 lumens	24 19 14	140 lm/W 143 lm/W 145 lm/W	3000K/4000K/5000K	9"	6"	2.5"

**FULL CUT-OFF WALL PACK**

- Field selectable output and color temperature
- Universal voltage 120-277V
- Power factor >0.90
- CRI >80
- Polycarbonate lens
- Optional photocell
- L70 = 136,000 hours



Product Number	Selectable Lumen Output*	Watts*	Efficacy*	Selectable CCT	Length (in)	Width (in)	Height (in)
07-WPFC-8L-LKFS	8,682 lumens	57	152 lm/W	3000K/4000K/5000K	14"	9"	6"
	7,048 lumens	46	156 lm/W				
	5,526 lumens	35	161 lm/W				
07-WPFC-15L-LKFS	16,848 lumens	113	149 lm/w	3000K/4000K/5000K	14"	9"	6"
	13,760 lumens	92	154 lm/W				
	10,987 lumens	71	159 lm/W				

**UP/DOWN CYLINDER LUMINAIRE**

- Field selectable output and color temperature
- Light direction switch
- Universal voltage 120-277V
- Power factor >0.90
- CRI >90
- Built in photocell
- 0-10VDC Dimming drivers
- L70 = 140,000 hours



Product Number	Selectable Lumen Output*	Watts*	Efficacy*	Selectable CCT	Head Dia. (in)	Length (in)	Width (in)	Height (in)
07-CYL-UPDN-976L-3CCT	864 lumens	9	94 lm/W	3000K/4000K/5000K	3.07"	4.5"	5.4"	3.1"
	707 lumens	7	94 lm/W					
	565 lumens	6	94 lm/W					
07-CYL-UPDN-201712L-3CCT	1,959 lumens	20	99 lm/w	3000K/4000K/5000K	4.17"	4.5"	6.7"	11"
	1,662 lumens	17	100 lm/W					
	1,225 lumens	14	101 lm/W					
07-CYL-UPDN-302722L-3CCT	2,912 lumens	34	85 lm/W	3000K/4000K/5000K	5.71"	5.7"	8.4"	13"
	2,660 lumens	30	90 lm/W					
	2,162 lumens	23	92 lm/W					

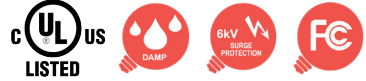
\*Nominal values shown for CCT set at 4000

“We’ve been consistently impressed with the quality of lights. Not only have we experienced zero fixture failures, but their customer service is top-notch. Highly recommend! “

-Mark, iXsystems

## PREMIUM LINEAR HIGH BAY

- Universal voltage 120-277V; optional 347-480V
- Power factor >0.90
- Sensor ready-Screw-in RCA receptacle
- 0-10Vdc dimming
- Field selectable output and color temperature
- Optional Passive Infrared (PIR) or microwave sensor sold separately
- L70 = 134,000 hours
- Emergency drivers available
- Optional narrow or wide distribution



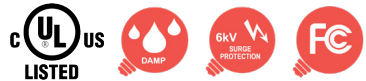
Product Number	Selectable Lumen Output*	Watts*	Efficacy*	Selectable CCT	Length (in)	Width (in)	Height (in)
20-HBSLR-181512L-LKFS	18,085 lumens 14,555 lumens 12,007 lumens	120 96 76	150 lm/W 152 lm/W 158 lm/W	4000K/5000K	16.5"	10.25"	1.8"
20-HBSLR-241815L-LKFS	24,047 lumens 18,017 lumens 15,021 lumens	158 115 94	152 lm/W 157 lm/W 159 lm/W	4000K/5000K	23"	10.25"	1.8"
20-HBSLR-363024L-LKFS	35,517 lumens 30,037 lumens 24,049 lumens	237 193 152	150 lm/W 156 lm/W 158 lm/W	4000K/5000K	31"	10.25"	1.8"
20-HBSLR-604836L-LKFS	60,104 lumens 48,182 lumens 37,049 lumens	404 312 236	149 lm/W 154 lm/W 157 lm/W	4000K/5000K	44"	10.25"	1.8"

## LINEAR ADJUSTABLE HIGH BAY

- Universal voltage 120-277V
- Field selectable output and color temperature
- Sensor Ready-Screw-in RCA receptacle
- Power factor >0.90
- CRI >80
- 0-10Vdc dimming
- Passive Infrared (PIR) sensor sold separately
- L70 = 148,000 hours
- Optic panels rotate up to 135 degrees



Accessories Sold Separately	
20-HBLASR-WGK-24X4	Wire-guard kit – 15L & 23L
20-HBLASR-WGK-24X5	Wire-guard kit – 30L
20-HBLASR-PMK-S	Pendant mount kit – all models
20-HBLASR-SMK-S	Surface mount kit – all models



Product Number	Selectable Lumen Output	Watts	Efficacy	Selectable CCT	Length (in)	Width (in)	Height (in)
20-HBLASR-15129L-LKFS	15,819 lumens 12,681 lumens 9,935 lumens	107 83 64	140 lm/W 140 lm/W 140 lm/W	4000K/5000K	25.8"	12.1"	2"
20-HBLASR-241815L-LKFS	23,645 lumens 17,959 lumens 15,038 lumens	157 115 95	142 lm/W 140 lm/W 140 lm/W	4000K/5000K	25.8"	12.1"	2"
20-HBLASR-302418L-LKFS	31,090 lumens 25,457 lumens 19,469 lumens	205 163 121	140 lm/W 140 lm/W 140 lm/W	4000K/5000K	25.8"	12.1"	2"

TEC only stocks LED High Bay Lights from trusted suppliers who use premium materials and adhere to high safety standards.

LED Highbay Lights are an excellent choice for businesses looking to upgrade their lighting fixtures and save on energy costs.

330-933-6247

## PREMIUM ROUND HIGH BAY

- Universal voltage 120-277V; optional 347-480V
- Power factor >0.90
- 0-10Vdc dimming
- Field selectable output and color temperature
- Sensor Ready- screw-in RCA receptacle
- Optional Passive Infrared (PIR) or microwave sensor sold separately
- L70 = 146,000 hours
- Available in black or white



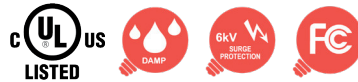
Accessories Sold Separately	
20-HD07VR-PH-1	Passive Infrared Sensor
20-HD07VR-MH-B-1	Microwave step-dimming sensor
20-HBSD-325W-480-277	347-480V step-down transformer
20-HBRSR-ALREF-S	90° aluminum reflector - 07-HBRSR-221816L-4K5K models
20-HBRSR-PCREF-S	90° polycarbonate reflector - 07-HBRSR-221816L-4K5K models
20-HBRSR-ALREF-L	90° aluminum reflector - 07-HBRSR-353024L-4K5K models
20-HBRSR-PCREF-L	90° polycarbonate reflector - 07-HBRSR-353024L-4K5K models
20-HBRSR-YOKE-(x)	Yoke mount - all models (x) = -WHT or -BLK
20-LEDBRSN-PSH-PRM-V2	Pendant snap hook - all models



Product Number	Selectable Lumen Output*	Watts*	Efficacy*	Selectable CCT	Diameter (in)	Height (in)	Color
20-HBRSR-221816L-4K5K	22,935 lumens	147	156 lm/W	4000K/5000K	10.6"	5.5"	WHT BLK
	18,790 lumens	115	163 lm/W				
	15,891 lumens	95	168 lm/W				
20-HBRSR-353024L-4K5K	35,716 lumens	229	156 lm/W	4000K/5000K	13"	5.6"	WHT BLK
	30,801 lumens	192	160 lm/W				
	24,368 lumens	146	167 lm/W				

## FULL-BODY LINEAR HIGH BAY

- Universal voltage 120-277V; optional 347-480V
- Power factor >0.90
- Sensor Ready-Screw-in RCA receptacle (sensor sold separately)
- 0-10Vdc dimming
- Field selectable output and color temperature
- L70 = 135,000 hours
- Chain mounting kit is standard, other mounting options are available
- Optional Passive Infrared (PIR) or microwave sensor sold separately



Product Number	Selectable Lumen Output	Watts	Efficacy	Selectable CCT	Length (in)	Width (in)	Height (in)
20-FHBSR-181512L-LKFS	18,260 lumens	127	143 lm/W	4000K/5000K	13"	9.5"	3.7"
	15,387 lumens	104	148 lm/W				
	12,454 lumens	82	153 lm/W				
20-FHBSR-241815L-LKFS	23,772 lumens	150	150 lm/W	4000K/5000K	14.2"	10.25"	4.5"
	18,164 lumens	116	156 lm/W				
	15,480 lumens	98	159 lm/W				
20-FHBSR-363024L-LKFS	35,415 lumens	235	150 lm/W	4000K/5000K	19.7"	10.25"	6.5"
	29,825 lumens	192	155 lm/W				
	24,204 lumens	151	130 lm/W				
20-FHBSR-604836-LKFS	69,117 lumens	390	152 lm/W	4000K/5000K	30.7"	11"	9.25"
	47,698 lumens	305	156 lm/W				
	36,167 lumens	225	161 lm/W				

## STRIP LIGHT

- Universal voltage 120-277V
- Power factor >0.90
- CRI >80
- 0-10Vdc dimming
- Field selectable output and color temperature
- Optional passive infrared (PIR) or microwave sensor
- L70 = 196,000 hours
- Emergency drivers available



Product Number	Selectable Lumen Output*	Watts*	Efficacy*	Selectable CCT	Length (in)	Width (in)	Height (in)
10-SL-4FT-5L-LKFS	5,203 lumens	34	152 lm/W	3500K/4000K/5000K	47.3"	3.3"	3.5"
	4,317 lumens	30	143 lm/W				
	3,631 lumens	25	143 lm/W				
10-SL-8FT-10L-LKFS	10,124 lumens	68	149 lm/W	3500K/4000K/5000K	94.2"	3.3"	3.5"
	8,483 lumens	60	141 lm/W				
	7,135 lumens	55	130 lm/W				

## STRIP LIGHT SLIM

- Universal voltage 120-277V
- Field selectable output and color temperature
- Optional passive infrared (PIR) or microwave sensors
- Emergency drivers available
- Power factor >0.90
- CRI >80
- 0-10Vdc dimming
- L70 = 196,000 hours



Product Number	Selectable Lumen Output*	Watts*	Efficacy*	Selectable CCT	Length (in)	Width (in)	Height (in)
10-SLS-4FT-5L-LKFS	5,025 lumens	33	151 lm/W	3500K/4000K/5000K	47.3"	2.4"	2.8"
	4,305 lumens	30	143 lm/W				
	3,622 lumens	25	143 lm/W				
10-SLS-8FT-10L-LKFS	9,976 lumens	67	149 lm/W	3500K/4000K/5000K	94.2"	2.4"	2.8"
	8,862 lumens	58	152 lm/W				
	7,567 lumens	48	156 lm/W				

## PREMIUM WRAP LIGHT

- Field selectable output and color temperature
- Optional passive infrared (PIR) or microwave sensor
- Universal voltage 120-277V
- Emergency drivers available
- Power factor >0.90
- CRI >80
- 0-10Vdc dimming
- L70 = 196,000 hours



Product Number	Selectable Lumen Output*	Watts*	Efficacy*	Selectable CCT	Length (in)	Width (in)	Height (in)
10-WR-5L-LKFS	5,837 lumens	39	149 lm/W	3500K/4000K/5000K	47.7"	7.1"	2.8"
	4,932 lumens	32	152 lm/W				
	4,336 lumens	28	154 lm/W				

## ECONOMY WRAP LIGHT

- Field selectable output and color temperature
- Universal voltage 120-277V
- Power factor >0.90
- CRI >80
- 0-10Vdc dimming
- L70 = 196,000 hours



Product Number	Selectable Lumen Output*	Watts*	Efficacy*	Selectable CCT	Length (in)	Width (in)	Height (in)
10-WRE-6L-LKFS	5,880 lumens 5,017 lumens 3,925 lumens	45 40 30	131 lm/W 129 lm/W 131 lm/W	3500K/4000K/5000K	47.6"	5.4"	2"

## STAIRWELL LIGHT

- Field selectable output and color temperature
- Universal voltage 120-277V
- Power factor >0.90
- CRI >80
- 0-10Vdc dimming
- Optional occupancy/dimming sensor
- L70 = 190,000 hours
- Emergency drivers available



Product Number	Selectable Lumen Output*	Watts*	Efficacy*	Selectable CCT	Length (in)	Width (in)	Height (in)
10-SW-LKFS	6,499 lumens 4,941 lumens 4,311 lumens	45 33 28	146 lm/W 150 lm/W 152 lm/W	3500K/4000K/5000K	48"	4.5"	4"
10-SW-2FT	3,462 lumens 2,880 lumens 2,132 lumens	24 20 15	141 lm/W 143 lm/W 143 lm/W	3500K/4000K/5000K	22"	4.3"	4"

Our representative has been the greatest find ever when it comes to sales reps! He goes above and beyond to ensure we get the best pricing in a timely manner. We have won multiple projects due to the lighting package savings that John has quoted us!"

-Eric, MBF Electric

### PREMIUM VAPOR-TIGHT LIGHT

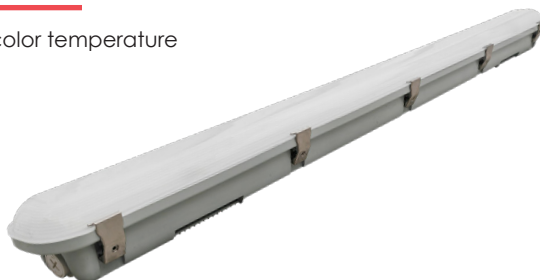
- cULus Sanitation listed for non-splash food zones to comply with NSF/ANSI 2 standards
- Field selectable output and color temperature
- Universal voltage 120-277V
- Power factor >0.90
- CRI >80
- L70 = 137,000 hours
- NEMA 4x
- IP66 rated



Product Number	Selectable Lumen Output	Efficacy*	Selectable CCT	Length (in)	Width (in)	Height (in)
20-VTSR-211816L	21K / 18K / 16K lumens	>155 lm/W	3500K/4000K/5000K	47.5"	10.5"	4.5"

### VAPOR-TIGHT SLIM LIGHT

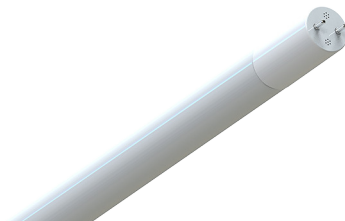
- Field selectable output and color temperature
- Universal voltage 120-277V
- Power factor >0.90
- CRI >80
- L70 = 178,000 hours
- Emergency Drivers available
- Screw-in sensor ready
- NEMA 4X



Product Number	Selectable Lumen Output*	Watts*	Efficacy*	Selectable CCT	Length (in)	Width (in)	Height (in)
20-VTSR-765L-3CCT	7,611 lumens	51	149 lm/W	3500K/4000K/5000K	47"	3.8"	3"
	6,198 lumens	43	144 lm/W				
	5,303 lumens	36	146 lm/W				

### T8 LED REPLACEMENT LAMPS

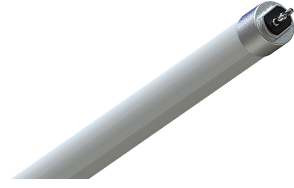
- Universal voltage 120-277V
- Non-dimming
- CRI>80
- L70 = 54,000 hours
- 12-T8L-7X (8-ft) Series- Double-ended, integrated driver, Type B for bypass only
- 4-ft lamp Series- Single or double-ended, integrated driver, Type B for bypass only



Product Number	Lumen Output	Watts	Efficacy	CCT	Length (in)	Width (in)	Height (in)
12-T8LIDFH11-2200-4FT-CBA-7T	2,200 lumens	17	130 lm/W	4000K	47.2"	1"	1"
12-T8LIDFH11-2200-4FT-EBA-7T	2,200 lumens	17	130 lm/W	5000K	47.2"	1"	1"
12-T8LIDFH11-5000-8FT-EBA-7X	5,500 lumens	40	138 lm/W	5000K	93.2"	1"	1"
12-L8L1-BPMFH-G2-17W-ABTSE2200-4C	2,100 lumens*	17*	124 lm/W*	Selectable 27 / 30 / 35 / 40 / 50 / 6000K	47.2"	1"	1"

## T5 LED REPLACEMENT LAMPS

- Universal 120-277V
- Non-dimming
- L70 = 54,000 hours
- CRI>80
- Double-ended, integrated driver, Type B for bypass only



Product Number	Lumen Output	Watts	Efficacy*	CCT	Length (in)	Width (in)	Height (in)
12-T5L-ISFH14-3500-4FT-EBA-01	3,500 Lumens	25	140 lm/W	5000	45.2"	0.7"	0.7"

## ECONOMY UNDER CABINET LIGHT

- Standard 120V
- Power factor >0.90
- CRI >90
- Triac dimming
- Field selectable color temperature
- L70 = 196,000 hours



Product Number	Lumen Output*	Watts*	Efficacy*	Selectable CCT	Length (in)	Width (in)	Height (in)
05-UCE-9-KFS	412	5	86 lm/W	27K/30K/35K/40K/50K	9"	3.5"	1"
05-UCE-12-KFS	450	5	92 lm/W	27K/30K/35K/40K/50K	12"	3.5"	1"
05-UCE-18-KFS	770	9	88 lm/W	27K/30K/35K/40K/50K	18"	3.5"	1"
05-UCE-21-KFS	764	9	90 lm/W	27K/30K/35K/40K/50K	21"	3.5"	1"
05-UCE-24-KFS	803	9	91 lm/W	27K/30K/35K/40K/50K	24"	3.5"	1"
05-UCE-33-KFS	1,245	14	91 lm/W	27K/30K/35K/40K/50K	33"	3.5"	1"
05-UCE-42-KFS	1,543	18	88 lm/W	27K/30K/35K/40K/50K	42"	3.5"	1"

## CENTER BASKET

- Field selectable output and color temperature
- Universal voltage 120-277V
- Power factor >0.90
- CRI >80
- 0-10Vdc dimming
- PMMA lens
- L70 = 196,000 hours
- Emergency drivers available



### Mounting Accessories and Emergency Drivers (Sold Separately)

10-SMKT-22	Surface Mounting Kit for 2x2 panel
10-SMKT-24	Surface Mounting Kit for 2x4 panel
10-LEDPNL2x2-FK	Flange Mounting Kit for 2x2 panel
10-LEDPNL2x4-FK	Flange Mounting Kit for 2x4 Panel
10-PNL-CM	Cable Mounting Kit
03-BLEM-CP-5C	Remote Mount Emergency driver - EM5
03-BLEM-CP-10C	Remote Mount Emergency driver - EM10
03-BLEM-CP-13C	Remote Mount Emergency driver - EM13



Product Number	Selectable Lumen Output*	Watts*	Efficacy*	Selectable CCT	Length (in)	Width (in)	Height (in)
10-CB22-4L-LKFS	4,370 lumens 3,772 lumens 3,176 lumens	31 27 22	140 lm/W 142 lm/W 144 lm/W	3500K/4000K/5000K	23.7"	23.7"	2"
10-CB24-6L-LKFS	5,858 lumens 5,062 lumens 4,556 lumens	43 36 32	137 lm/W 139 lm/W 141 lm/W	3500K/4000K/5000K	47.8"	23.7"	2"

## PANEL LIGHTS

- Universal voltage 120-277V
- Power factor >0.90
- Field selectable output and color temperature
- CRI >80
- 0-10Vdc dimming
- PMMA lens
- L70 = 144,000 hours
- Flicker-Free per IEEE1789-2015



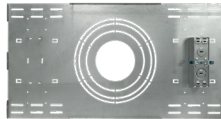
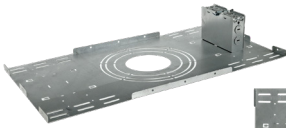
Mounting Accessories (Sold Separately)	
10-SMKT-14	Surface Mount Kit for 1x4 panel
10-SMKT-22	Surface Mount Kit for 2x2 panel
10-SMKT-24	Surface Mount Kit for 2x4 panel
10-LEDPNL1x4-FK	Flange Mount kit for 1x4 panel
10-LEDPNL2x2-FK	Flange Mount Kit for 2x2 panel
10-LEDPNL2x4-FK	Flange Mount Kit for 2x4 panel
10-PNL-CM	Cable Mounting Kit



Product Number	Selectable Lumen Output*	Watts*	Efficacy*	Selectable CCT	Length (in)	Width (in)	Height (in)
10-PNL1X4-40L-LKFS	4,300 lumens	33	131 lm/W	3500K/4000K/5000K	47.7"	11.8"	1.5"
	3,700 lumens	27	137 lm/W				
	2,730 lumens	19	140 lm/W				
10-PNL2X2-40L-LKFS	4,290 lumens	32	135 lm/W	3500K/4000K/5000K	23.7"	23.7"	1.5"
	3,810 lumens	27	142 lm/W				
	2,800 lumens	19	145 lm/W				
10-PNL2X4-50L-LKFS	5,250 lumens	37	141 lm/W	3500K/4000K/5000K	47.7"	23.7"	1.5"
	4,575 lumens	32	144 lm/W				
	3,323 lumens	23	148 lm/W				
10-PNL2X4-98654L-5CCT	9,127 lumens	30	132 lm/W	3000K/3500/4000K 5000K/6500K	47.7"	23.7"	1.5"
	7,908 lumens	40	139 lm/W				
	6,709 lumens	50	139 lm/W				
	5,520 lumens	60	142 lm/W				
	4,091 lumens	72	148 lm/W				

## ARCHITECTURAL LED DOWNLIGHT

- Universal Voltage 120-277V
- Field selectable output and color temperature
- 0-10Vdc dimming
- Power factor >0.90
- L70 = 149,000 hours
- IC rated
- New construction or retrofit applications

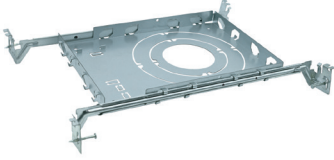


Mounting Accessories (Sold Separately)	
06-MP-UD46810-NC	Mounting Plate

Product Number	Selectable Lumen Output*	Watts*	Efficacy*	Selectable CCT	Length (in)	Width (in)	Height (in)
06-CDR4-1L-LKFS-WHT (White Baffle)	1,000 lumens	12	83 lm/W	2700K/3000K/4000K/5000K	5.1"	5.1"	3.2"
	800 lumens	9	89 lm/W				
	500 lumens	6	83 lm/W				
06-CDR4-1L-LKFS-SW (Specular White)	1,000 lumens	12	83 lm/W	2700K/3000K/4000K/5000K	5.1"	5.1"	3.2"
	800 lumens	9	89 lm/W				
	500 lumens	6	83 lm/W				
06-CDR6-2L-LKFS-WHT	2,000 lumens	20	100 lm/W	2700K/3000K/4000K/5000K	8.4"	8.4"	4.2"
	1,500 lumens	15					
	1,000 lumens	10					
06-CDR6-2L-LKFS-SW	2,000 lumens	20	100 lm/W	2700K/3000K/4000K/5000K	8.4"	8.4"	4.2"
	1,500 lumens	15					
	1,000 lumens	10					
06-CDR8-5L-LKFS-WHT	4,760 lumens	48	99 lm/W	2700K/3000K/4000K/5000K	10"	10"	4.5"
	4,200 lumens	42	101 lm/W				
	3,300 lumens	32	104 lm/W				
06-CDR8-5L-LKFS-SW	4,720 lumens	47	101 lm/W	2700K/3000K/4000K/5000K	10"	10"	4.5"
	3,840 lumens	40	95 lm/W				
	2,955 lumens	31	96 lm/W				
06-CDR10-5L-LKFS (SW only)	4,797 lumens	47	102 lm/W	2700K/3000K/4000K/5000K	11"	11"	6"
	3,710 lumens	40	92 lm/W				
	2,947 lumens	31	95 lm/W				

## CANLESS RECESSED DOWNLIGHT

- Dedicated 120V (60Hz)
- Field selectable output and color temperature
- Power factor >0.90
- L70 = 174,000 hours
- IC rated
- Triac dimming
- New construction or retrofit applications



Mounting Accessories (Sold Separately)	
06-MP-UD346-NC	Mounting Plate

10-IMODCR4-8L-KFS	800 lumens	10	80 lm/W	2700/3000/3500/ 4000/5000K	5.5"	5.5"	2"
10-IMODCR6-12L-KFS	1200 lumens	14	86 lm/W	2700/3000/3500/ 4000/5000K	7.4"	7.4"	2"

## FLAT PANEL LIGHT

- Dedicated 120V (60Hz)
- Power factor >0.90
- Triac dimming
- Field selectable color temperature
- L70 = 181,000 hours (4-inch)
- L70 = 173,000 hours (6-inch)



Mounting Accessories (Sold Separately)	
11-MP-UD346-NC	Mounting Plate

10-FPR3-4L-KFS	400 lumens	6	66 lm/W	2700K/3000K/3500/ 4000K/5000K	3.6"	3.6"	0.9"
10-FPR4-6L-KFS	600 lumens	9	85 lm/W	2700K/3000K/3500/ 4000K/5000K	4.7"	4.7"	0.8"
10-FPR6-10L-KFS	1,000 lumens	15	66 lm/W	2700K/3000K/3500/ 4000K/5000K	6.7"	6.7"	0.8"
10-FPR8-14L-KFS	1,400 lumens	18	78 lm/W	2700K/3000K/3500/ 4000K/5000K	8.9"	8.9"	0.9"



## 4" CANS AND TRIMS

- Standard 120V input
- IC Rated
- Triac dimming
- CRI>90
- L70 = 119,000 hours
- E26 Edison Adapter for retrofit applications included
- Selectable color temperature



Trim Part	Description	Lumen Output*	Watts*	Efficacy*	Selectable CCT	Length (in)	Width (in)	Height (in)
06-MODR4-7L-KFS	Round White Baffle Trim	700 lumens	10	70 lm/W	27/30/35/40 /50 Kelvin	5.1"	5.1"	2.3"
06-MODGR4-7L-KFS	Round White Gimbal	700 lumens	10	70 lm/W	27/30/35/40 /50 Kelvin	5.1"	5.1"	2.4"

### 4" Dedicated LED IC Rated Recessed Cans

New Construction Can	Remodel Can
06-4C-LED-NIC-NND	06-4C-LED-RIC-NND



## 6" CANS AND TRIMS

- Standard 120V input
- IC Rated
- Triac dimming
- CRI>90
- L70 = 119,000 hours
- E26 Edison Adapter for retrofit applications included
- Selectable color temperature



Trim Part	Description	Lumen Output*	Watts*	Efficacy*	Selectable CCT	Length (in)	Width (in)	Height (in)
06-MODR6-10L-KFS	Round White Baffle Trim	1000 lumens	14	71 lm/W	27/30/35/40/50 Kelvin	7.4"	7.4"	2.4"
06-MODGR6-10L-KFS	Round White Gimbal	1000 lumens	16	63 lm/W	27/30/35/40/50 Kelvin	7.4"	7.4"	2.8"

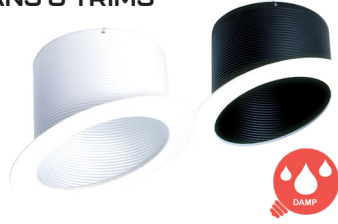
### 6" Dedicated LED IC Rated Recessed Cans

New Construction Can	Remodel Can
06-6C-LED-NIC-NND	06-6C-LED-RIC-NND



## 6" SLOPED INCANDESCENT RECESSED CANS & TRIMS

- Adjustable socket
- For pitched ceilings 10-30 degrees
- Accommodates up to 75W R30/PAR30 Incandescent lamps
- Thermal protection
- IC Rated



Trim Part	Description	Lamping	Trim Color	Baffle Color
06-6T-SLP-BW	Sloped White Baffle Trim	E26 PAR30/R30 up to 75W	White	White
06-6T-SLP-BB	Sloped Black Baffle Trim	E26 PAR30/R30 up to 75W	White	Black

### 6" Sloped Ceiling IC Rated Recessed Cans

New Construction Can	Remodel Can
06-6C-SLPN-ICAT	06-6C-SLPR-ICAT



## SURFACE MOUNT LIGHT

- Dedicated 120V (60Hz)
- Power factor >0.90
- Field selectable color temperature
- CRI >80
- Triac Dimming
- Polycarbonate lens
- L70 = 157,000 hours



Product Number	Lumen Output*	Watts*	Efficacy*	Selectable 5CCT	Length (in)	Width (in)	Height (in)
20-SMR11-KFS	1,000 lumens	14	71 lm/W	2700K/3000K/3500K/4000K/5000K	11"	11"	3"
20-SMR14-KFS	1,400 lumens	20	70 lm/W	2700K/3000K/3500K/4000K/5000K	14"	14"	3"
20-SMS12-KFS	1,000 lumens	14	71 lm/W	2700K/3000K/3500K/4000K/5000K	12"	12"	3"
20-SMS14-KFS	1,500 lumens	20	75 lm/W	2700K/3000K/3500K/4000K/5000K	14"	14"	3"

## DOUBLE-RING, SURFACE-MOUNT LIGHT

- Dedicated 120V (60Hz)
- Power factor >0.90
- Field selectable color temperature
- CRI >90
- Triac dimming
- Polystyrene lens
- L70 = 93,000 hours
- Brushed nickel ring color



Product Number	Lumen Output*	Watts*	Efficacy*	Selectable 5CCT	Length (in)	Width (in)	Height (in)
20-DR12-12L-5CCT	1,200 lumens	17	70 lm/W	2700K/3000K/3500K/4000K/5000K	12"	12"	3.5"
20-DR14-18L-5CCT	1,800 lumens	22	81 lm/W	2700K/3000K/3500K/4000K/5000K	14"	14"	3.5"
20-DR16-20L-5CCT	2,000 lumens	26	77 lm/W	2700K/3000K/3500K/4000K/5000K	16"	16"	3.5"

## ROUND FLAT DISK LIGHTS

- Dedicated 120Vac (60Hz)
- Power factor >0.90
- Triac dimming
- Field selectable color temperature
- L70 = 174,000 hours
- CRI > 90



Trim Rings (7" & 13" only)	
Part Number	Description
20-TR-7-BK	7" Black Trim
20-TR-7-BN	7" Brush Nickel Trim
20-TR-13-BK	13" Black Trim
20-TR-13-BN	13" Brush Nickel Trim



Product Number	Lumen Output*	Watts*	Efficacy*	Selectable 5CCT	Length (in)	Width (in)	Height (in)
20-DL5-8L-5CCT	800 lumens	10	88 lm/W	2700K/3000K/3500K/4000K/5000K	5.5	5.5	.79
20-DL7-12L-5CCT	1200 lumens	15	84 lm/W	2700K/3000K/3500K/4000K/5000K	7.5	7.5	.79
20-DL9-14L-5CCT	1400 lumens	17	85 lm/W	2700K/3000K/3500K/4000K/5000K	8.9	8.9	.79
20-DL11-20L-5CCT	2000 lumens	20	103 lm/W	2700K/3000K/3500K/4000K/5000K	11	11	1
20-DL13-22L-5CCT	2200 lumens	22	104 lm/W	2700K/3000K/3500K/4000K/5000K	12.8	12.8	1

## DISK LIGHT

- Dedicated 120V (60Hz)
- Power factor >0.90
- Triac dimming
- Order with or without Occupancy sensor
- Field selectable color temperature
- L70 = 119,000 hours



Product Number	Lumen Output*	Watts*	Efficacy*	Selectable 5CCT	Length (in)	Width (in)	Height (in)
06-DK6-10L-KFS	1,000 lumens	15	66 lm/W	2700K/3000K/3500K/4000K/5000K	7.2"	7.2"	1.4"
06-DK6-10L-KFS-OS	1,000 lumens	15	66 lm/W	2700K/3000K/3500K/4000K/5000K	7.4"	7.4"	1"

## Exit/Emergency Two-Head Slim Thermoplastic Combo Unit

- Dual 120/277 voltage
- Red/Green Selectable available
- 0.5-watt (1 LEDs x 0.50 watt) per head / High Lumen available 2.0W / head)
- 3.6V Long-life rechargeable NiCad battery
- Internal automatic switching to emergency battery mode
- Engineering grade, 5VA flame retardant Thermoplastic
- Mounting Canopy for top or side mounting or Universal KO for wall mount
- Meets UL924, NFPA 101 Life Safety code



Product Number	No. of Faces	LED/Letter Color	Housing Color	Options
02-CEU	Universal Single/Double	Red Green RED/GREEN Selectable	White Black	High Lumen Remote Capacity Self-Diagnostic Assembled in USA

### Die-Cast Aluminum Exit Sign



- Dual 120/277 voltage
- Premium, die-cast aluminum housing
- Internal automatic switching to emergency battery mode
- Meets UL924, NFPA 101 Life Safety code

Product Number	No. of Faces	Letter Color	Housing Color	Battery	Options
02-XA	Single Double Universal Single/ Double	Red Green	White Black Brushed Aluminum	AC-Only EM-Battery Back-up	Self-Diagnostic Dual Circuit Tamper-proof Assembled in USA

### Edge-Lit Exit Sign



- Dual 120/277 voltage
- Premium, extruded aluminum housing
- Internal automatic switching to emergency battery mode
- Mounting canopy for top, end or back mounting
- Meets UL924, NFPA 101 Life Safety code

Product Number	No. of Faces	Letter Color	Panel Color	Housing Color	Battery	Options
02-XEU	Single Double	Red Green	Clear Mirror White	White Black Aluminum	AC-Only EM-Battery Back-up	Self-Diagnostic Dual Circuit (120V or 277V) Special Wording Assembled in USA

### Slim Profile LED Thermoplastic Exit Sign

- Dual 120/277 voltage
- Red/Green Selectable available
- Engineering grade, 5VA flame retardant Thermoplastic
- Internal automatic switching to emergency battery mode
- Mounting Canopy for top or side mounting or Universal KO for wall mount
- Meets UL924, NFPA 101 Life Safety code



Product Number	LED/Letter Color	Housing Color	Battery	Options	Housing Style
02-EZR	Red Green Red/Green Selectable	White Black	AC-Only EM-Battery Back-up	Self-Diagnostic Dual Circuit Custom Wording Assembled in USA	SL- Low Profile

### Exit/Emergency Two-Head Thermoplastic Combo Unit

- Dual 120/277 voltage
- Red/Green Selectable available
- 1.5-watt (3 LEDs x 0.50 watt) per head
- 3.6V Long-life rechargeable NiCad battery
- Internal automatic switching to emergency battery mode
- Engineering grade, 5VA flame retardant Thermoplastic
- Mounting Canopy for top or side mounting or Universal KO for wall mount
- Meets UL924, NFPA 101 Life Safety code



Product Number	No. of Faces	LED/Letter Color	Housing Color	Options
02-CEM	Universal Single/Double	Red Green RED/GREEN Selectable	White Black	Remote Capacity Self-Diagnostic Assembled in USA

## Reduced Profile LED Adjustable Two-Head Emergency Unit

- Dual 120/277 voltage
- 1.5-watt (3 LEDs x 0.50 watt) per head;
- 3.6V Long-life rechargeable NiCad battery;
- Internal automatic switching to emergency battery mode
- Engineering grade, 5VA flame retardant Thermoplastic
- Meets UL924, NFPA 101 Life Safety code



Product Number	Housing Color	Options
02-EM	White Black	Self-Diagnostic Remote Capacity

## Decorative Outdoor LED AC/Emergency Unit

- 4.8V long life, rechargeable NiCad Battery
- Automatic Emergency on switch
- 90 minutes illumination
- Self-Diagnostic monthly, bi-annual and annual testing
- Photocell standard
- Optional internal heater for extreme cold weather
- CEC Title 20 certified optional
- Meets UL924, NFPA 101 Life Safety code



Product Number	Housing Color	Voltage	Wattage	Output (Lumens)
02-ETD-ACEM	White Black Dark Bronze Nickel	Universal 120-277V	12W	1,286 (AC mode) 350 (DC mode)

## Micro/Mini/Large Inverter Emergency Power Systems

Electrical inverter systems for powering up to 1150W of incandescent, fluorescent, induction or LED lighting loads. Pulse width modulated (PWM) output design provides clean, 60 Hz. sinusoidal emergency power to loads.



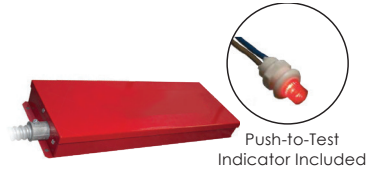
Optional



Product Number	Capacity	Mounting	Options
23-MPS	20 Watts 32 Watts 35 Watts 55 Watts	Surface Recessed Ceiling T-Grid	Self-Diagnostics CEC-Title 20 Compliant Remote Test Switch Panel
23-SPS	55 Watts/125VA 110 Watts/125VA 110Watts/250VA 220Watts/250VA	Surface Recessed Ceiling T-Grid	Self-Diagnostics CEC-Title 20 Compliant Remote Test Switch Panel 4C- 4-output Circuit Switching AO-Adjustable Output/Dimmer Bypass
23-LPS	375 Watts 600 Watts 750 Watts 950 Watts 1150 Watts	Surface	Self-Diagnostics CEC-Title 20 Compliant Remote Test Switch Panel 4C- 4-output Circuit Switching 4AO-Adjustable Output/Dimmer Bypass Input Circuit Breaker Output Circuit Breaker

## Emergency Driver for LED Lamps

Our dependable emergency driver provides regulated power to LED lamps during a power outage. Our emergency driver has versatile mounting options: inside, on-top or remote mount. Includes a push-to-test indicator switch.



Push-to-Test Indicator Included

Product Number	Output Voltage	Output Wattage
03-LEDEM-BF/DM-20W-E	180V DC	20 Watts



## Inline Emergency LED Drivers

AC Solution Providing Voltage to the Input Side of the Connected Load. The inline installation makes it perfect for LED recessed downlight applications, outdoor and gasketed fixtures, or any application. Specifically designed for remote applications where there's no access to the LED board.

Using 0-10V dimming, these EM drivers can work with LED fixtures whose full power load is up to 200 W (-HV25) and 350 W (-HV40).



Product Number	Current (mAh)	Output Voltage (VDC)	Output Wattage (W)
03-BLEM-INDRV-HV25	4400 mAh	14.4	25
03-BLEM-INDRV-HV40	6600mAh	14.4	40

Product Number	Current (mAh)	Output Voltage (VDC)	Output Wattage (W)
03-BLEM-INDRV-HBR30	5200	14.4	30
03-BLEM-INDRV-HBR40	6600	14.4	40
03-BLEM-INDRV-HBR60	9600	14.4	60



## Constant-Power Emergency LED Drivers

Provides constant power output to the load during emergency mode operation. Suitable for installation inside, on-top, or in remote mount of the LED Strip Lights and other fixtures. Electronic limiting with normal operation resuming upon removal of fault. UL Listed, Field-installed.

- CEC Title 20 Compliant standard on models -MV and -HV



Product Number	Current (mA)	Output Voltage (VDC)	Output Wattage (W)	Lumens (Lm)
03-LEDEM-CP-1200	390-156	20-50	7.8	1200
03-LEDEM-CP-2400	850-340	20-50	17.0	2400



Product Number	Current (mA)	Output Voltage (VDC)	Output Wattage (W)	Options
03-BLEM-CP-5	250-100	20-50	5	-C = Provided with 2' flex conduit on each end
03-BLEM-CP-10	535-214	20-50	10.7	
03-BLEM-CP-13	685-274	20-50	13.7	

**MICROWAVE OR DAYLIGHT HARVESTING / OCCUPANCY SENSOR**

**20-HD406VRH-D**

- Multi-volt: 120-277V
- Rated up to 3A @120V
- Operating Temperature of -35°C to 60°C
- Mounts up to 49ft
- Requires remote to adjust factory settings (HD03R)



**CEILING MOUNTED PIR OCC SENSOR**

**11-CMS-YM2301**

- 360 degree passive infrared sensor
- Range up to 800 sq-ft
- Time-delay adjustment from 15 seconds up to 30 minutes
- Sensitivity adjustment
- Light level sensing adjustment



**360° HIGH BAY OCC SENSOR**

**20-FL-OSFHU-RG-QC**

- Passive Infrared Technology:
- Turn lights ON in response to the heat generated energy
- Mounts directly onto a luminaire
- Operational Mode: Auto ON, Auto OFF
- Time Delay: Adjustable (15 seconds up to 30 minutes)
- Coverage Range: High Bay mounting heights up to 25' mounting / 360° field
- 120/277VAC, 60Hz Voltage
- Load Requirements: 800VA at 120VAC



**RF CONTROL**

**11-PPA401S**

- Multi-volt: 120-277V
- 0-10V Dimming
- Operating Temperature of 0° - 40°C
- Rated up to 1200W
- Remote Required



**BLUETOOTH CONTROL**

**11-PPA102S**

- Multi-volt: 120-277V
- 0-10V Dimming
- Rated up to 13.1A
- Bluetooth Mesh
- App controlled



**EXTERNAL SCREW-IN PIR SENSOR**

**20-HD09VR-PH5-1 (-90)**

**20-HD07VR-PH-1 (-90)**

- 12VDC Input Power
- Screw in RCA Jack compatible with most standard receptacles
- Operating temperature of -20°C to 60°C
- Mounts up to 39ft
- HD09 has 5-dial control for initial programming
- HD07 Requires remote to adjust factory settings (HD05R)
- Detachable angled arm adapter



**3-PIN NEMA PHOTOCELL**

**07-JL-205C23-IP65**

- Multi-volt: 120-277V
- Turns on at 6 lux, turns off at 50 lux
- Operating Temperature of -40°C to 70°C
- Rated up to 1800W
- Preset 5-30 second time delay



**EXTERNAL SCREW-IN MICROWAVE SENSOR**

**20-HD09VR-MH5-1 (-90)**

**20-HD07VR-MH-B-1 (-90)**

- 12VDC Input Power
- Screw in RCA Jack compatible with most standard receptacles
- Operating temperature of -20°C to 60°C
- Mounts up to 49ft
- HD09 has 5-dial controls for initial programming
- HD07 Requires remote to adjust factory settings (HD05R)
- Detachable angled arm adapter



**480V NEMA PHOTOCELL**

**07-26WA86**

- Input Voltage of 480V
- Turns on at 10-20 lux, off at 30-60 lux
- Operating Temperature of -40°C to 70°C
- Rated up to 1800W



**PHOTOCELLS**

**07-JL-403C**

**07-JL-404C**

- Multi-volt: 120-277V
- Turns on at 10-20 lux, turns off at 30-80 lux
- Operating Temperatures of -40°C - 70°C
- Rated for up to 5A
- Preset 3-10 second time delay



180° PIR WALLBOX VACANCY & OCC SENSOR

11-SOVS-WH-MV

- PIR detects motion from heat-emitting source
- Replaces a standard light or fan single-pole switch
- Automatic ON/OFF and manual ON / Automatic OFF operation
- Neutral wire required
- LED Indicates motion was sensed
- Adjustable time delay from 15 seconds - 30 minutes
- Multi-volt



DIMMERS

11-DWS-010V-T  
11-DWS-010V-D

- Multi-volt: 120-277V
- Rated up to 600W
- 0-10V dimming
- Compatible with LED/ CFL/Incandescent Lamps and Luminaires
- Single pole and 3 Way applications



PRODUCT NUMBER	RECEPTACLES
11-115R-S-WH	15 amp Duplex Single Recep.
11-120R-S-WH	20 amp Duplex Single Recep.
11-15R-D-WH	15 amp Decora Recep.
11-15R-D-TR-WH	15 amp Decora Recep. Tamper
11-15R-S-WH	15 amp Duplex Recep.
11-15R-S-TR-WH	15 amp Duplex Recep. Tamper
11-20R-D-WH	20 amp Indust Decora Recep.
11-20R-D-WH-TR	20 amp Indust Decora Recep. Tamper
11-20R-S-WH	20 amp COM Stand Duplex Recep.
11-DD30A-4S	Dryer/Range Receptacle, 30A
11-DD50A-4S	Dryer/Range Receptacle, 50A
11-TR20-DC	20 amp Tamper Decora Recep.
11-TR20-SC	20 amp Tamper Duplex Recep.
11-USB-15-TR	15 amp Receptacle USB Tamper
11-USB-20R-TR	20 amp Receptacle USB Tamper



PRODUCT NUMBER	SWITCHES
11-DS115	Single Pole Decora Switch 15 Amp
11-DS315	3-way Decora Switch 15 Amp
11-DS415	4-way Decora Switch 15 Amp
11-TS115	Single Pole Toggle Switch 15 Amp
11-TS215	2-Way Toggle Switch Side 15 Amp
11-TS315	Duplex Horizontal Toggle Switch



PRODUCT NUMBER	GFCI
11-GFCI-ST-20TR-WH-K	20 amp Self Testing Tamper
11-GFCI-ST-20TRWR-WH-K	20 amp Self Testing Tamper/WR
11-GFCI-ST-15TR-WH-K	15 amp Self Testing Tamper
11-GFCI-ST-15TRWR-WH-K	15 amp Self Testing Tamper/WR





**FREE SHIPPING!**  
**over \$500**

Orders of \$500+ being shipped to a single location within the contiguous 48 states will not be charged freight. We'll choose the carrier and method.\*

## Terms & Conditions

### Return Policy

All returns need to include all the original parts, accessories and instruction manuals and must be in the original box. Items that have cut wires, dents, scratches, show signs of installation or are missing the original product manuals will not be accepted for return or exchange or credit. **Please contact your sales representative so that we may issue a RMA number and special return address before the item is shipped back.** Items are not returnable without a pre-authorized RMA number and subject to a 25% restocking fee. Any items returned without a pre-authorized RMA # will be denied credit.

There are no returns on special order and/or custom fixtures and/or devices made to customers required specifications.

Credits and refunds will be quickly processed once the defective product has been received, evaluated and deemed defective.

### Damaged Shipments

Always inspect your shipment when it arrives. If anything is damaged upon arrival please contact us immediately. Damaged goods claims need to be reported within 7 business days from date of delivery. No replacements for damaged products will be sent after 7 days.

For additional information, contact our reps at 330-933-6247

### Remittance Terms & Credit Cards Accepted

Tailored Energy Connection accepts American Express, MasterCard, Visa, pre-pay orders and open accounts upon approval.

\*additional terms may apply