



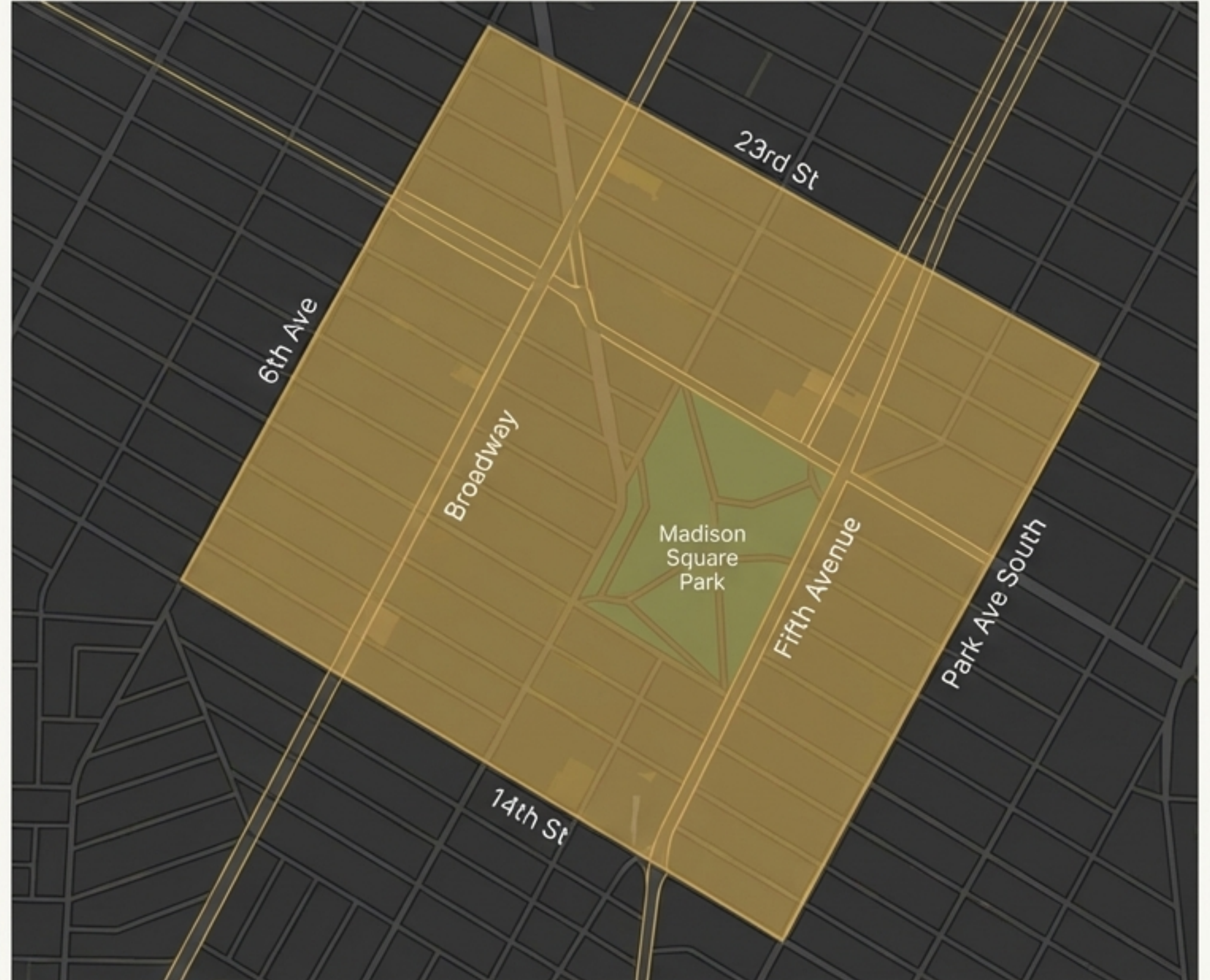
Meet The Flatiron District

An Insider's Guide to the Neighborhood Where
New York's Ambition, Art, and Appetite Converge.

The Character of a Crossroads

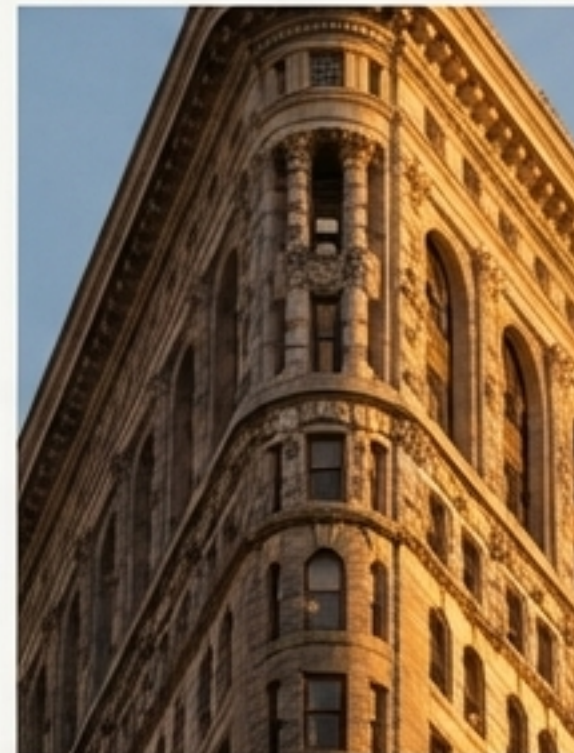
The Flatiron District isn't just a place; it's a personality. It's an innovator with a Gilded Age soul, a tastemaker with a playful heart. Born from the intersection of Broadway and Fifth Avenue, it has forever been a stage for New York's next act. This guide introduces you to its many faces.

Generally bounded by 14th St, 6th Ave, 23rd St, and Park Ave South, the neighborhood is a vital link between downtown's creative energy and midtown's commercial pulse.



The Enduring Icon: The Flatiron Building

At the prow of 23rd Street stands Daniel Burnham's 1902 masterpiece. Originally the Fuller Building, its revolutionary steel-frame and wedge shape—just 6.5 feet wide at its northern vertex—instantly became a symbol of a modern Manhattan.



Fun Fact

Did You Know? The building's unique shape created strong wind tunnels, famously lifting women's skirts and creating the phrase '23 skidoo' as police would shoo away loitering men.

The Gilded Age Dreamers



Metropolitan Life Insurance Tower (1909): Once the world's tallest building, its clocktower was inspired by St. Mark's Campanile in Venice. A 700-foot statement of corporate might.



New York Life Building (1928): Designed by Cass Gilbert, its striking gold-leaf pyramid top glows at sunset. An iconic neo-Gothic crown on the skyline.



Appellate Division Courthouse (1900): A Beaux-Arts jewel where a third of the construction budget was dedicated to opulent statues and murals, a testament to the City Beautiful movement.



The Neighborhood's Green Heart

Opened in 1847, Madison Square Park is the Flatiron's communal living room. After a complete renovation in 2001 by the Madison Square Park Conservancy, it's now a hub for public art installations, community events, and daily life. It's where the city comes to breathe.



The birthplace of a global phenomenon, serving its famous burgers, fries, and concretes since 2004.



A Playful Past: The Toy District

Before “Silicon Alley,” the Flatiron District was the “Toy District.” The buildings at 200 Fifth Avenue and 1107 Broadway formed the International Toy Center, the nexus of the American toy industry. From 1903, the annual American International Toy Fair filled these halls, where iconic playthings were introduced to the world.

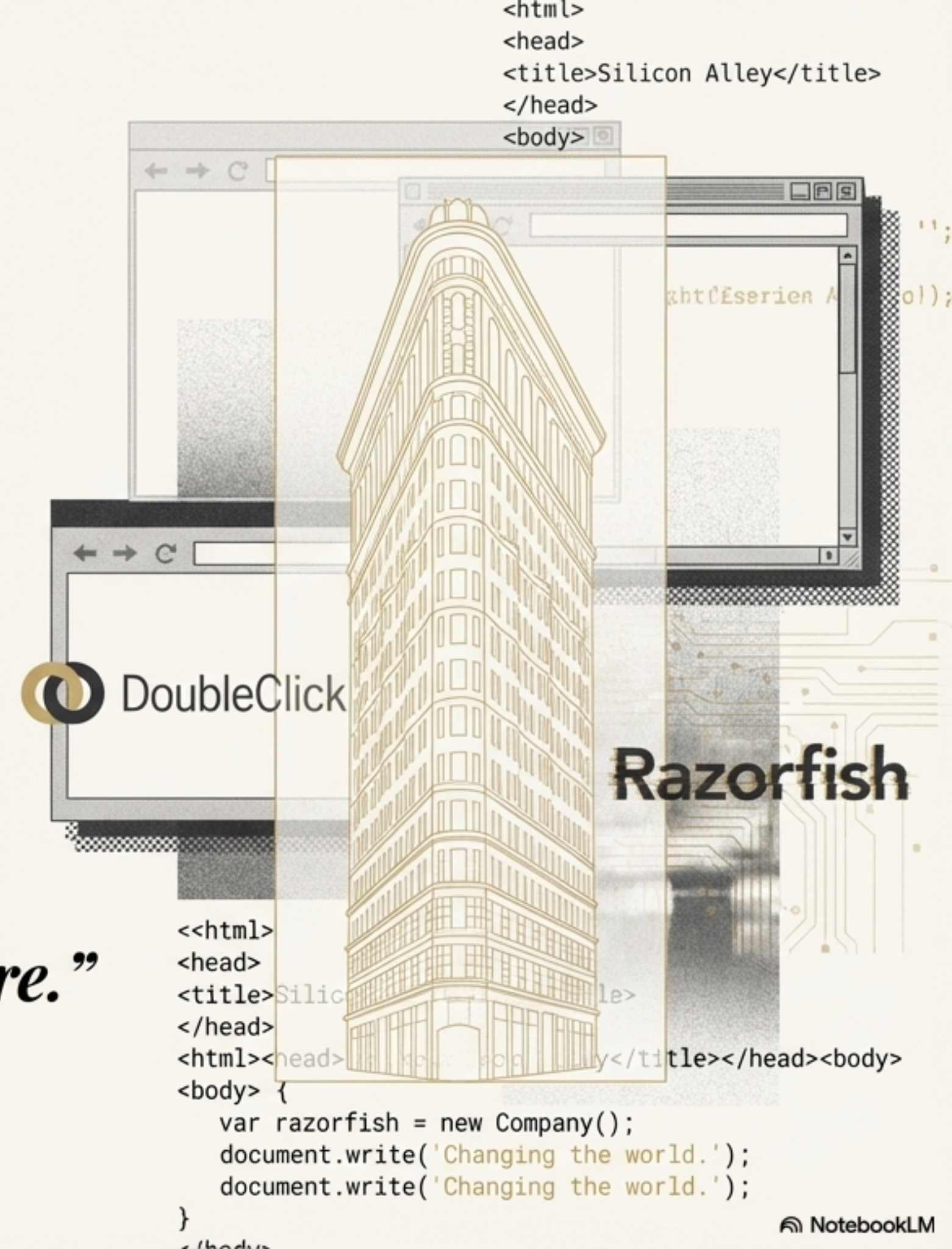


At its peak, the Toy Center housed **around 600 tenants** and accounted for an estimated **95% of all U.S. toy industry transactions**.

The Inventive Spirit: Birth of Silicon Alley

In the 1990s, the affordable lofts of the old manufacturing district attracted a new kind of creator. Tech startups, new media companies, and digital ad agencies flourished, earning the neighborhood the moniker “Silicon Alley.” Companies like Razorfish and DoubleClick pioneered a new economy from these historic buildings.

“We were media. We were marketing. We were changing the world. Silicon Valley was chips, computers, and hardware.”
– Mark Stahlman, who coined the term ‘Silicon Alley.’



A Taste for Excellence

The Flatiron District is a culinary powerhouse, home to some of the city's most celebrated dining experiences. The neighborhood's commitment to culinary artistry is reflected in its density of Michelin-starred restaurants.



Eleven Madison Park: World-renowned for its innovative, entirely plant-based tasting menu.



Gramercy Tavern: A New American institution serving seasonal cuisine since 1994.



COTE Korean Steakhouse: A unique blend of American steakhouse indulgence and Korean BBQ tradition.



Rezdôra: An homage to the handmade pastas and cuisine of Italy's Emilia-Romagna region.

The Global Pantry: Eataly

Housed in the historic former Toy Center at 200 Fifth Avenue, Eataly is a vibrant Italian marketplace—a “Little Italy under one roof.” It’s a bustling ecosystem of restaurants, fresh food counters, cafés, and grocery aisles, offering a breathtaking immersion into Italian culinary culture.



Local Tip

Don't miss the cannoli counter for a life-changing pastry or the La Focaccia counter for incredible fresh-baked breads.



Casual Cravings & Local Legends

Beyond the tasting menus, the Flatiron's heart beats in its classic, everyday institutions. From historic diners to modern comfort food, these are the spots revered by locals.



Eisenberg's Sandwich Shop: A classic 40-foot lunch counter founded in 1929, now reborn as S&P, serving stellar tuna melts and timeless diner fare.



Hill Country Chicken: Southern comfort food done right, focusing on crunchy fried chicken and buttermilk biscuits.



City Bakery: A local standby famous for its pretzel croissants and legendary thick hot chocolate.

The Modern Shopper's Mile

The Flatiron's retail legacy began in the 19th century as part of the famed "Ladies' Mile" shopping district. Today, it's a destination for design lovers, fashion seekers, and curious browsers, with everything from global flagships to quirky, independent boutiques.



ABC Carpet & Home: A multi-story wonderland of curated home goods.



Fishs Eddy: Kitschy and contemporary glassware with a whimsical NYC theme.



ABC Carpet & Home: A multi-story wonderland of curated home goods.



LEGO Store: An interactive heaven for builders of all ages.



Harry Potter Store: An immersive experience for fans with exclusive merchandise.

For the Curious Mind

The Flatiron District stimulates more than just the palate. It's home to unique cultural institutions and entertainment venues that celebrate everything from mathematical beauty to design history.



National Museum of Mathematics (MoMath): Kid-friendly, hands-on exhibits that make the world of math wondrous and fun.



Poster House: The first museum in the U.S. dedicated exclusively to the art and history of the poster.



SPiN New York: A lively ping-pong lounge co-founded by Susan Sarandon, featuring 16 tables and a vibrant bar scene.

The District After Dark

When the office lights dim, a different energy emerges. The Flatiron District offers an eclectic mix of sophisticated cocktail bars, classic jazz clubs, and rooftop lounges with iconic skyline views.



230 Fifth Rooftop: Unbeatable, year-round views of the skyline. In winter, heated igloos and complimentary robes make it a cozy destination.



The Flatiron Room: A sophisticated whiskey bar with live jazz and a timeless, deco-style ambiance.

Know Before You Go: Getting Here & Insider Tips

Transportation



Subway

R/W or 6 trains to 23rd Street.

Bus

M1, M2, M3 buses run along Fifth Avenue and Park Avenue South.

Walkable

An easy 20-minute walk from Grand Central Terminal or a 25-minute walk from Central Park South.

Local Insights



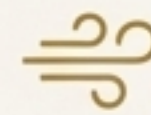
Best Photo Op: For the classic shot of the Flatiron Building, stand on the traffic island on 23rd Street just north of Fifth Avenue.



Golden Hour Magic: Arrive 45 minutes before sunset when the light turns the limestone and terracotta facades a warm, honey color.



Architectural Secret: Look up! The angled streets created by Broadway's diagonal path create dramatic perspectives and unique triangular blocks that dared architects to be bold.



Weather Reality: Be prepared for the famous wind tunnel effect, especially between November and March. A light layer is always a good idea.

A nighttime photograph of the Flatiron District in New York City. The Flatiron Building, a triangular-shaped skyscraper, is the central focus, illuminated with warm lights. To its left is the New York State Capitol building, also brightly lit. The streets are filled with light trails from cars, and other buildings in the background are visible against the dark sky.

The Ever-Evolving Character

The Flatiron District is where New York's past is not just preserved, but lived in. It is a neighborhood of constant adaptation—from Gilded Age mansions to toy factories, from dot-com startups to culinary temples. Its story is written in limestone and light, an enduring crossroads that continues to define the ambition and spirit of the city. Inter Regular.