

Arrowhead Point CC&R requirements for shingles

9.10 Restrictions as to Roof Construction. [As revised by Amendment 3, 22 June 1998] Roofs shall will be covered with shingles of wood, or with slate, or tile, or products resembling the look of those materials, and of such construction as approved by the Architectural Committee. Roofs may also be covered with laminated, fiberglass based, 40 year minimum warranty, Architectural Composition products as approved by the Architectural Committee. The Architectural Committee will identify, maintain and update a list of suitable options.

Listed below are examples of approved shingles. Note, this is not a comprehensive list. Other shingles and manufacturers that meet the criteria of article 9.10 may be approved.

GAF Grand Sequoia

Grand Sequoia®

★★★★★ 4.8 (122)

Artisan-crafted shapes combined with oversized tabs result in a sophisticated beauty unmatched by typical s



Cedar



Mesa Brown



Weathered
Wood



Autumn Brown



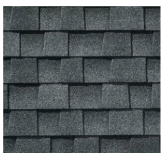
Charcoal

Timberline HDZ®

☐ Compare

★★★★★ 4.8 (18961)

GAF's #1-selling shingle. High Definition® color blends backed by strong warranties.



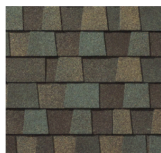
Pewter Gray



Copper
Canyon



Birchwood



Cedar Falls



Barkwood



Weathered
Wood

PABCO Paramount

Paramount Signature Cut Shingles

THE ORIGINAL. THE SIGNATURE.

Beauty, performance, and reliability is evidence you can trust. Paramount® is our original, signature cut, open-tooth architectural shingle, on which our legacy of success has been built.

No matter what you're looking for in your shingles, Paramount® delivers. Paramount is available in four colors, meets **UL790 Class A Fire Resistance Standard**, offers a **Limited Lifetime warranty**, and features **Algae Defender®**. Paramount is the premium modern shingle for your home.



Paramount - Antique Black

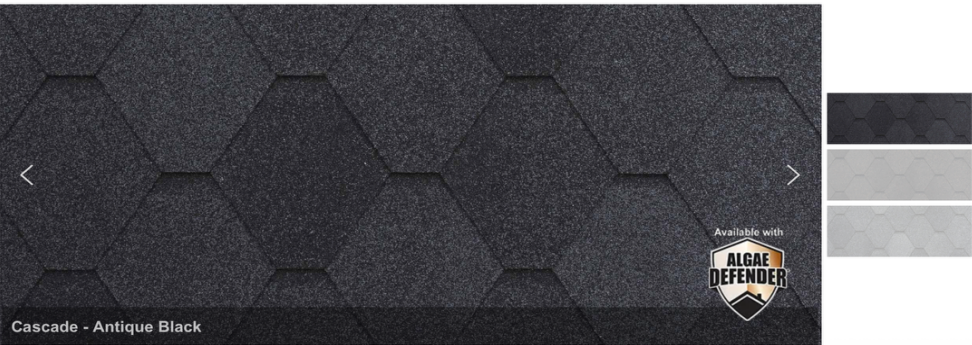
PABCO Casdade

Cascade Signature Cut Shingles

HARNESS YOUR HOME'S HISTORY.

Our unique and distinguished Cascade™ diamond-shaped shingle is the perfect choice for your historical-style home.

Featuring our exclusive U.S. patented design, Cascade shingles have a style that honors your home's heritage. The unique shape accentuates roofs that are steeply sloped, offering a glimpse into an idyllic past. Cascade is available in three classic colors, meets **UL790 Class A Fire Resistance Standard**, offers a **Limited Lifetime warranty**, and features **Algae Defender®**.



Cascade - Antique Black

CertainTeed Presidential



Presidential Shake, shown in Aged Bark

COLOR AVAILABILITY



PRESIDENTIAL SHAKE®

- Two-piece laminated fiberglass construction
- Distinctive sculpted, rustic look
- Lifetime limited transferable warranty – residential*
- 50-year limited transferable warranty – group-owned or commercial*
- 30-year *StreakFighter*® algae-resistance warranty
- 10-year SureStart™ protection
- 15-year 110 mph wind-resistance warranty
- Wind warranty upgrade to 130 mph available. CertainTeed starter and CertainTeed hip and ridge required
- Presidential Starter (required) and hip and ridge accessory available (see details in back of brochure)

* See warranty for specific details and limitations.

CertainTeed products are tested to ensure the highest quality and comply with the following industry standards:

Fire Resistance:

- UL Class A
- UL certified to meet ASTM D3018 Type 1

Wind Resistance:

- UL certified to meet ASTM D3018 Type 1
- ASTM D3161 Class F

Tear Resistance:

- UL certified to meet ASTM D3462
- CSA standard A123.5

Impact Resistance:

- UL2218 Class 3

Wind Driven Rain Resistance:

- Miami-Dade Product Control Acceptance: Please reference www.certainteed.com to determine approved products by manufacturing location.

Quality Standards:

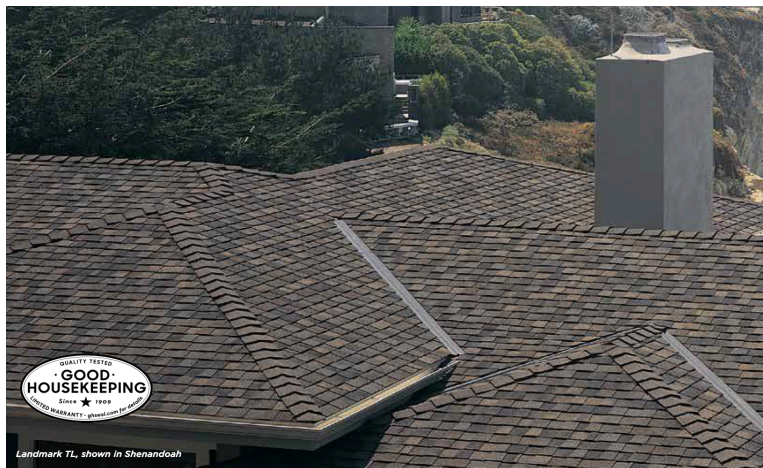
- ICC-ES-ESR-1389 & ESR-3537



Scan code for more information

11

CertainTeed Landmark TL



Landmark TL, shown in Shenandoah

LANDMARK® TL

- Three-piece laminated fiberglass construction
- Rustic appearance of hand-split wood shakes
- Lifetime limited transferable warranty – residential*
- 50-year limited transferable warranty – group-owned or commercial*
- 30-year *StreakFighter*® algae-resistance warranty
- *NailTrak*® extra-wide nailing area for accurate installation
- 10-year SureStart™ protection
- 15-year 110 mph wind-resistance warranty
- Wind warranty upgrade to 130 mph available. CertainTeed starter and CertainTeed hip and ridge required
- CertainTeed Starter and hip and ridge accessory available (see details in back of brochure)

* See warranty for specific details and limitations.

CertainTeed products are tested to ensure the highest quality and comply with the following industry standards:

Fire Resistance:

- UL Class A
- UL certified to meet ASTM D3018 Type 1

Wind Resistance:

- UL certified to meet ASTM D3018 Type 1
- ASTM D3161 Class F

Tear Resistance:

- UL certified to meet ASTM D3462
- CSA standard A123.5

Impact Resistance:

- UL2218 Class 4

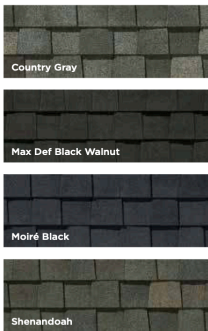
Wind Driven Rain Resistance:

- Miami-Dade Product Control Acceptance: Please reference www.certainteed.com to determine approved products by manufacturing location.

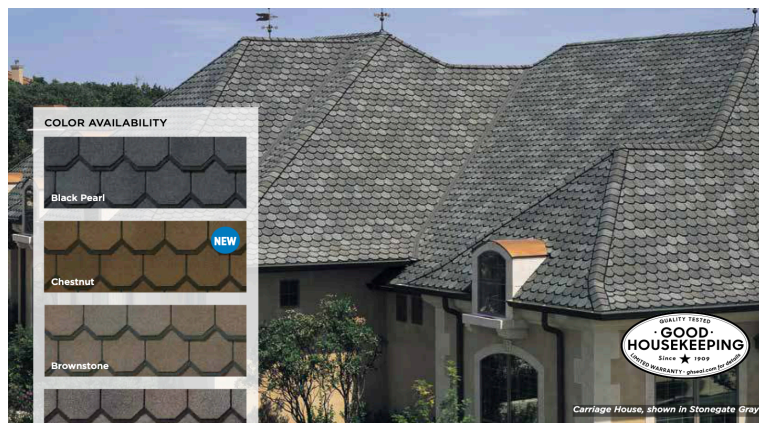
Quality Standards:

- ICC-ES-ESR-1389 & ESR-3537

COLOR AVAILABILITY



CertainTeed Carriage House



CARRIAGE HOUSE®

- Two full-size, fiberglass-based shingles
- Unique chamfered cut for scalloped appearance
- Four-layer coverage when applied
- Lifetime limited transferable warranty – residential*
- 50-year limited transferable warranty – group-owned or commercial*
- 30-year *StreakFighter*® algae-resistance warranty
- 10-year SureStart™ protection
- 15-year 110 mph wind-resistance warranty
- Wind warranty upgrade to 130 mph available. CertainTeed starter and CertainTeed hip and ridge required
- Hip and ridge accessory available (see details in back of brochure)

* See warranty for specific details and limitations.

CertainTeed products are tested to ensure the highest quality and comply with the following industry standards:

Fire Resistance:

- UL Class A
- UL certified to meet ASTM D3018 Type 1

Wind Resistance:

- UL certified to meet ASTM D3018 Type 1
- ASTM D3161 Class F

Tear Resistance:

- UL certified to meet ASTM D3462
- CSA standard A123.5

Impact Resistance:

- UL2218 Class 4

Wind Driven Rain Resistance:

- Miami-Dade Product Control Acceptance: Please reference www.certainteed.com to determine approved products by manufacturing location.

Quality Standards:

- ICC-ES-ESR-1389 & ESR-3537



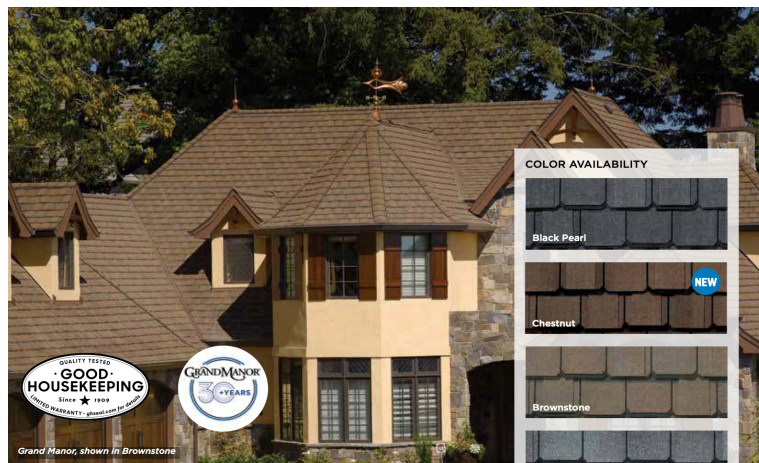
Scan code for more information

GRAND MANOR and CARRIAGE HOUSE SHINGLES

These two shingles can be combined to create a myriad of custom patterns, emulating traditional slate roof designs.

13

CertainTeed Grand Manor



GRAND MANOR®

- Two full-size, fiberglass-based shingles with randomly applied tabs
- Authentic depth and dimension of natural slate
- Virtual five-layer coverage when applied
- Lifetime limited transferable warranty – residential*
- 50-year limited transferable warranty – group-owned or commercial*
- 30-year *StreakFighter*® algae-resistance warranty
- 10-year SureStart™ protection
- 15-year 110 mph wind-resistance warranty
- Wind warranty upgrade to 130 mph available. CertainTeed starter and CertainTeed hip and ridge required
- High-Performance Starter and hip and ridge accessory available (see details in back of brochure)

* See warranty for specific details and limitations.

CertainTeed products are tested to ensure the highest quality and comply with the following industry standards:

Fire Resistance:

- UL Class A
- UL certified to meet ASTM D3018 Type 1

Wind Resistance:

- UL certified to meet ASTM D3018 Type 1
- ASTM D3161 Class F

Tear Resistance:

- UL certified to meet ASTM D3462
- CSA standard A123.5

Impact Resistance:

- UL2218 Class 4

Wind Driven Rain Resistance:

- Miami-Dade Product Control Acceptance: Please reference www.certainteed.com to determine approved products by manufacturing location.

Quality Standards:

- ICC-ES-ESR-1389 & ESR-3537



Scan code for more information

COLOR AVAILABILITY

