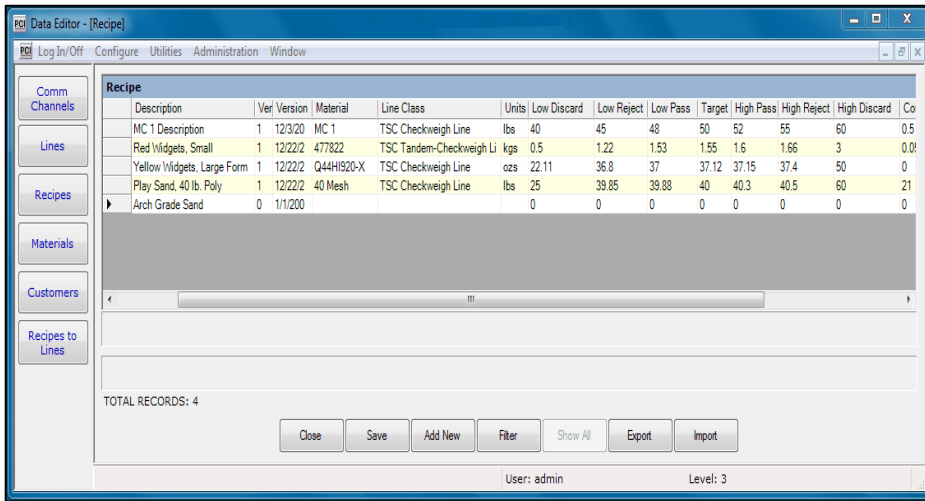




Manage - Monitor - Analyze & Improve

Manage connections to as many as 10 production scales, creating solid high-security associations directly with each scale. Limit access to recipe changes from the factory floor, provide a simple data entry point for Lot and Material Source Numbers and Log EVERY weight



Create, edit and manage unique product recipes for all your production lines. Share recipes or limit their access to any number of scales. Powerful recipe versioning helps you track changes that may affect product quality for HAACP or CFR compliance needs.

View, manage & print recipe version lists, require user input of Lot Numbers to associate with runs, and take advantage of high-level security that keeps unauthorized users from changing recipes or limits on the factory floor.

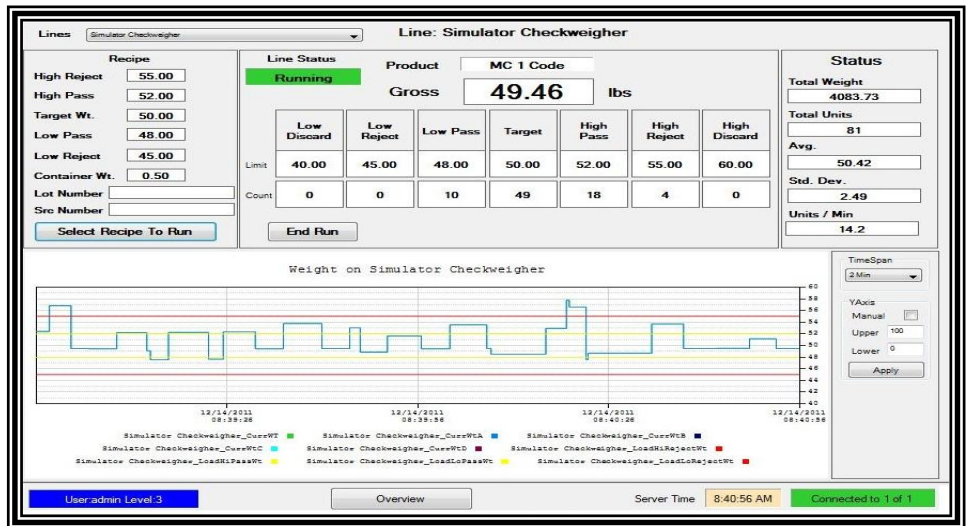
Monitor all connected scales from one screen, view details in real-time. See each weight, 5-zone classification, totals, statistics and a powerful graph function representing each weight compared to control and spec limits, all right at your fingertips.

Connect up to 5 users on your network. Provides simultaneous access to real-time viewing of all connected lines and report generation to any system printer. Multiple security levels allow for customized access.

Link Lot Numbers and Source Numbers (rail car, batch type, etc.) to each production run. Track production and call reports based on these fields for fast and accurate retrieval of audit reports.

Verify on-line real-time production activity. StatPak-PC II displays alarms for all down-time events for any connected machine. See what the operator sees, without the need to be on the factory floor.

Track and Monitor your production activity. Take advantage of the graph toolbox to manipulate the real-time plot of weights; change time span, adjust limits and view the data to suit your specific needs.



Monitor – Manage – Analyze & Improve



Manage your connections. Whether it is a Thompson Scale 4693, 5511 or 6611 controller, or premium controllers from packaging machinery manufacturers, get a solid and field proven bi-directional link between StatPak-PC II and your scale.

Our Field Data Portal gives you the flexibility to interface to virtually any brand of production scale with a serial output port. Let Thompson Scale's sales Engineers help you define your connection options and deliver solid and reliable communications solutions for your production scales.

- **Serial Connections** - RS-232 & RS-422
- **Serial Connectivity** - 4 & 8 Port Multiplexers, Serial Converters, HMI Interfaces to connect other brands of scales.
- **Network Connectivity** - TCP/IP wired and wireless solutions

Analyze and share with powerful reports.

Multiple pre-formatted reports give you focus on what's important to your productivity and quality control, providing analysis for you and detailed audits for your customers. Reports include:

- Unit weight listing report
- Shipping summary report
- Run summary report
- Recipe version report
- **Down-Time logging report**

As a bonus, take advantage of our Down-Time logging reports to generate a wealth of information on how production ran, and more importantly, when it stopped and for how long.

Print reports to any system printer, create PDF files to share with colleagues, email and distribute spreadsheet exports. Powerful and easy to use tools right on the dashboard.

Improve your process using the powerful tools within StatPak-PC II to get a handle on your production line performance. Combine these detailed analysis reports with TSC's engineering & consultation services to reduce waste, improve quality and increase your bottom line.

StatPak-PC II Run Summary Report

Line	Q1 Line Thompson Checkweigher		
Run ID	1,792	Lot No	
Date Opened	7/30/2008	5:03:51AM	
Date Closed	7/30/2008	9:48:22AM	
Material	[QC60] Concrete 60		
Customer			
Recipe	0000004:00006		

TSC Checkweigh Device

Statistic Variable	Lo Discard	Lo Reject	Lo Pass	Target	Hi Pass	Hi Reject	Hi Discard
UnitWt	55.00	59.10	59.20	60.00	62.90	65.00	70.00

Summary Of	4 Hours	45 Minutes Of Production	Produced	Accepted	Rejected	Discarded
Total Units			3,642	3,586	56	43
Total Wt.			224,060.09	220,635.66	3,424.43	3,793.60
Units / Min.			12.8007	12.6038		
Unit Mean			61.5212	61.5270		
Unit Std. Dev.			1.1441	1.0409		

+/- 3 Sigma Distribution Of		4 Hours	45 Minutes Of Production	0%	10%	20%	30%	40%
Cell Max	Cell Min	Cell Obs						
63.4323	63.1055	187						
63.1054	62.7786	179						
62.7785	62.4517	233						
62.4516	62.1248	298						
62.1247	61.7980	359						
61.7979	61.4711	422						
61.4710	61.1442	451						
61.1441	60.8173	473						
60.8172	60.4904	347						
60.4903	60.1635	240						
60.1634	59.8367	176						
59.8366	59.5098	85						
59.5097	59.1829	44						
59.1828	58.8560	20						
58.8559	58.5291	12						
58.5290	58.2022	4						
58.2021	57.8754	2						
57.8753	57.5485	4						
57.5484	57.2216	0						
57.2215	56.8947	1						
56.8946	56.5678	0						
		3537						



Idaho Weighing Systems

24085 Pheasant Ridge Ct Middleton, ID 83644

Phone: (208) 970-7748

Customer Satisfaction is our Highest Priority