

Field Proven Reliability

Deutsch's rugged all-metal bodies and corrosion resistant thermoplastic shells are manufactured from high quality materials selected for their ability to withstand years of environmental exposure.

Deutsch connectors are available in rectangular and cylindrical body shapes and feature :

- Wide operating temperature range.
- Secure locking mechanisms.
- Positive contact retention system.



Deutsch silicone seals and grommets fit tightly around the wire insulation and at the connector interface to provide redundant barriers to contamination.

In order to create a reliable environmental seal and ensure continuity of flow, Deutsch seals:

- Are resistant to most common industrial and engine fluids.
- Retain their flexibility across a wide temperature range.
- Never require potting or dielectric grease.



With integrated seals designed to work with multiple wire gauges, Deutsch connectors simplify design and inventory management, and provide exceptional performance in critical environments.

Common Contact System

The Deutsch Industrial Common Contact System is a unique system of interchangeable and intermateable contacts that can be used in many Deutsch Industrial connectors.

Contacts are available in Solid or Stamped & Formed (F-Crimp) styles, with plating options including gold or nickel.

Easy-to-use indent crimpers create a gas tight crimp that is resistant to oxidation. This high-quality crimp allows Deutsch contacts to provide reliable, low resistance power and data transmission.



Stamped and Formed (F-Crimp)



Solid





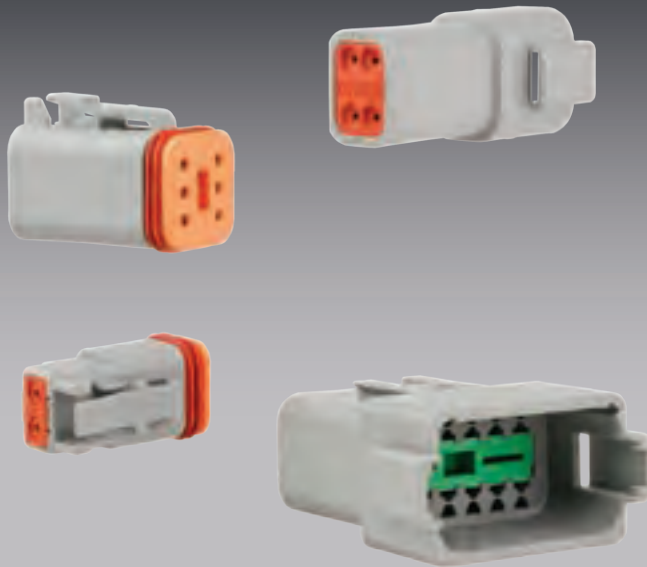
Deutsch

DT Series 6

Deutsch DT Detector 9

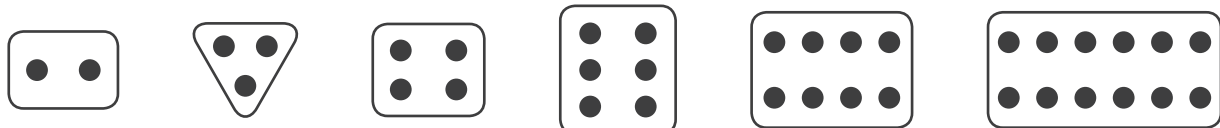
DTM Series 10

Sealed Buss Bars 12



- Industry proven.
- Environmentally sealed.
- 2, 3, 4, 6, 8 and 12 cavity arrangements.
- Multiple housing options available.
- Rectangular, thermoplastic housing.
- Latched mating.
- Wedgelocks assure contact alignment and retention.
- Accepts size 16 contacts, each with 13A continuous capacity.
- Available in 'Grab Kits' in Solid Green Band and Solid Green Band – Gold-plated options.

Housing :	Thermoplastic
Seal :	Silicone Rubber
Wedgelocks :	Thermoplastic
Contact Size :	16
Contact Rating :	13A @ 125°C
Shock :	50G
Vibration :	20G rms 10 – 2000Hz
Operating Temperature :	-55°C to 125°C



DT0X-2X	DT0X-3X	DT0X-4X	DT0X-6X	DT0X-08XX	DT0X-12XX
2 x size 16	3 x size 16	4 x size 16	6 x size 16	8 x size 16 A, B, C, D	12 x size 16 A, B, C, D

DT Series – Popular Components

Receptacle Components				Plug Components			
Cavities	Housing	Wedge	Size 16 Pin – Nickel	Cavities	Housing	Wedge	Size 16 Socket – Nickel
2	DT04-2P	W2P	0460-202-16141	2	DT06-2S	W2S	0462-201-16141
3	DT04-3P	W3P	AWG16-20 / 0.5-1.0mm ²	3	DT06-3S	W3S	AWG16-20 / 0.5-1.0mm ²
4	DT04-4P	W4P	Green Band	4	DT06-4S	W4S	Green Band
6	DT04-6P	W6P	0460-215-16141	6	DT06-6S	W6S	0462-209-16141
8	DT04-08PA	W8P	AWG14 / 1.0-2.0mm ²	8	DT06-08SA	W8S	AWG14 / 1.0-2.0mm ²
12	DT04-12-PA	W12P	114017 Cavity Plug	12	DT06-12SA	W12S	114017 Cavity Plug

Size 16 Green Band Contacts

Size 16 solid contacts are available to suit 2 wire sizes. Contacts with the green band marking accept the larger wire size of AWG14 / 1.0 – 2.0mm².



O460-215-1631



O462-209-16141



DE-DT6-1

DT Series – ‘Grab Kits’

Type	Solid Contacts	Size	No. of Circuits					
			2	3	4	6	8	12
Green Band		16	DE-DT2-1	DE-DT3-1	DE-DT4-1	DE-DT6-1	DE-DT8-1	DE-DT12-1
Green Band – Gold-plated		16	DE-DT2-4	DE-DT3-4	DE-DT3-4	DE-DT6-4	DE-DT8-4	DE-DT12-4

Kit Contents :
 1 x Receptacle & wedge
 1 x Plug & wedge
 Contacts to suit

For tools refer to page 13.



DT04-2P-L012



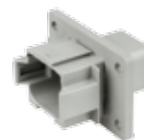
DT04-3P-L012



DT04-4P-L012



DT04-6P-L012



DT04-08PA-L012



DT04-12PA-L012

DT Series – Flange Mount (L012)

		No. of Cavities					
		2	3	4	6	8	12
		DT04-2P-L012	DT04-3P-L012	DT04-4P-L012	DT04-6P-L012	DT04-08PA-L012	DT04-12PA-L012



1011-345-0305



DT06-6S



1011-347-0605



1011-349-1205



DT Series – Dust Caps

		No. of Cavities					
		2	3	4	6	8	12
Part No.		1011-344-0205	1011-345-0305	1011-346-0405	1011-347-0605	1011-348-0805	1011-349-1205
Suits		DT06-2S	DT06-3S	DT06-4S	DT06-6S	DT06-08S	DT06-12S



DT Series – Assortment Kits

Part No.	Description	Kit Contents		
DE-DTKIT	F-Crimp contacts	Receptacles & Wedges :	Plugs & Wedges :	Contacts & Cavity Plugs :
	Standard DT Series connectors	3 x DT04-2P 3 x DT04-3P 2 x DT04-4P 1 x DT04-6P 1 x DT04-08PA 1 x DT04-12PA	3 x DT06-2S 3 x DT06-3S 2 x DT06-4S 1 x DT06-6S 1 x DT06-08SA 1 x DT06-12SA	12 x Cavity Plug (114017) 40 x F-Crimp Pin (1060-16-0122L) 40 x F-Crimp Socket (1062-16-0122L)
DE-DTKIT-1	Solid contacts	Receptacles & Wedges :	Plugs & Wedges :	Contacts & Cavity Plugs :
	Standard DT Series connectors	3 x DT04-2P 3 x DT04-3P 2 x DT04-4P 1 x DT04-6P 1 x DT04-08PA 1 x DT04-12PA	3 x DT06-2S 3 x DT06-3S 2 x DT06-4S 1 x DT06-6S 1 x DT06-08SA 1 x DT06-12SA	12 x Cavity Plug (114017) 40 x Solid Pin – Green Band (0460-215-16141) 40 x Solid Socket – Green Band (0462-209-16141)

For tools refer to page 13.



DT Series – Assortment Kits including Tools

Part No.	Description	Kit Contents		
DE-DTKIT-2	Solid contacts	Receptacles & Wedges :	Plugs & Wedges :	Contacts & Plugs :
	Standard DT Series connectors Crimp and multi-use tool	3 x DT04-2P 3 x DT04-3P 2 x DT04-4P 1 x DT04-6P 1 x DT04-08PA 1 x DT04-12PA	3 x DT06-2S 3 x DT06-3S 2 x DT06-4S 1 x DT06-6S 1 x DT06-08SA 1 x DT06-12SA	12 x Cavity Plug (114017) 40 x Solid Pin – Green Band (0460-215-16141) 40 x Solid Socket – Green Band (0462-209-16141) Tools : 1 x Removal Tool (DE-DET-RT) 1 x Crimp Tool (DE-DET16)

- Transparent housing with integrated LED on wedgelock for quick circuit diagnosis.
- Colour coded wedgelocks for operating voltages, 12V (yellow) and 24V (red).
- Joint retention fingers allow both contacts to be removed at the same time.
- Compatible with Pulse Width Modulated control.
- Sold as complete kit including green band contacts.
- Industry proven DT Series.
- Environmentally sealed.
- Latched mating.



Housing : Ultem
 Seal : Silicone
 Wedgelocks : Thermoplastic
 Contact Size : 16
 Contact Rating : 13A @ 125°C



DE-DTLED12V



DE-DTLED24V

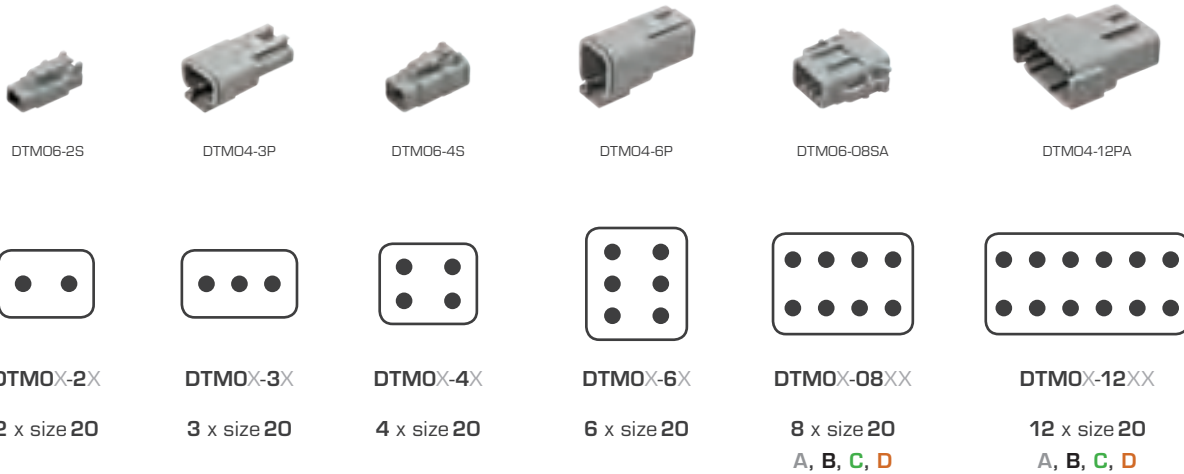
Deutsch – DT Detector Kits

Part No.	Voltage	Kit Contents
DE-DTLED12V	12	1 x DT Detector Receptacle 1 x DT Detector Wedge – Yellow 2 x Solid Socket – Green Band (0462-209-16141)
DE-DTLED24V	24	1 x DT Detector Receptacle 1 x DT Detector Wedge – Red 2 x Solid Socket – Green Band (0462-209-16141)



- Industry proven.
- Environmentally sealed.
- 2, 3, 4, 6, 8 and 12 cavity arrangements.
- Rectangular, thermoplastic design.
- Latched mating.
- Wedgelocks assure contact alignment and retention.
- Accepts size 20 contacts, each with 7.5A continuous capacity.
- Available in 'Grab Kits' in Solid, and Solid – Gold-plated contact options.

Housing : Thermoplastic
Seal : Silicone Rubber
Wedgelocks : Thermoplastic
Contact Size : 20
Contact Rating : 7.5A @ 125°C
Shock : 50G
Vibration : 20G rms 10 – 2000Hz
Operating Temperature : -55°C to 125°C



Deutsch – DTM Series – Popular Components

Cavities	Receptacle Components			Cavities	Plug Components		
	Housing	Wedge	Size 20 Pin – Nickel AWG20 / 0.2-0.5mm ²		Housing	Wedge	Size 20 Socket – Nickel AWG20 / 0.2-0.5mm ²
2	DTM04-2P	WM2P	0460-202-20141 AWG20 / 0.2-0.5mm ²	2	DTM06-2S	WM2S	0462-201-20141 AWG20 / 0.2-0.5mm ²
3	DTM04-3P	WM3P		3	DTM06-3S	WM3S	
4	DTM04-4P	WM4P		4	DTM06-4S	WM4S	
6	DTM04-6P	WM6P		6	DTM06-6S	WM6S	
8	DTM04-08PA	WM8P	0413-204-2005 Cavity Plug	8	DTM06-08SA	WM8S	0413-204-2005 Cavity Plug
12	DTM04-12-PA	WM12P		12	DTM06-12SA	WM12S	



DTM Series – ‘Grab Kits’

Contact Type	Size	No. of Cavities					
		2	3	4	6	8	12
Solid	20	DTM2-1	DTM3-1	DTM4-1	DTM6-1	DTM8-1	DTM12-1
Solid – Gold-plated	20	DTM2	DTM3	DTM4	DTM6	DTM8	DTM12

Kit Contents :
 1 x Receptacle & wedge
 1 x Plug & wedge
 Contacts to suit



Assortment Kits – DTM Series

Part No.	Description	Kit Contents
DE-DTMKIT-1	Solid contacts. Standard DTM Series connectors.	Receptacles & Wedges : 4 x DTM04-2P 4 x DTM04-3P 4 x DTM04-4P 2 x DTM04-6P 2 x DTM04-08PA 2 x DTM04-12PA Plugs & Wedges : 4 x DTM06-2S 4 x DTM06-3S 4 x DTM06-4S 2 x DTM06-6S 2 x DTM06-08SA 2 x DTM06-12SA Contacts & Blanks : 20 x 0413-204-2005 Sealing Blank 50 x 0460-202-20141 Solid Pin 50 x 0462-201-20141 Solid Socket

More Deutsch Available

DRC Series



- Several mounting options are available including In-Line, Flange, Standard and Moulded in Contact Receptacles.
- Optional accessories include Backshells, Insulators and Gaskets.
- Mates using key fastened jackscrew.
- Keyed versions for preventing mismatching.

HD30 Series



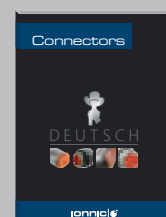
- Designed specifically for the truck, bus, mining and construction industry.
- Metal housing.
- Quick connect/disconnect bayonet coupling.
- Single hole bulkhead mounting.
- HD30 and HDP20 series are cross compatible.

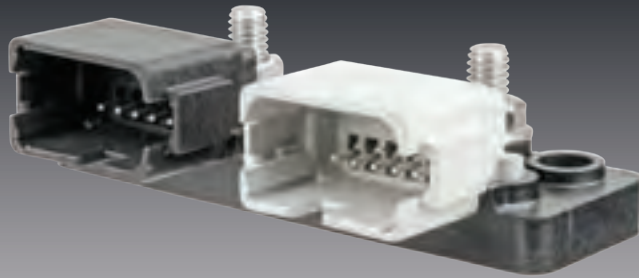
HD10 Series



- Available either in-line or flanged.
- Quick connect/disconnect bayonet coupling.
- Single hole bulkhead mounting.

For further information on the entire range of Deutsch, download the complete catalogue from ionnic.com or free call from within Australia 1800 724 690.





DE-BB2-12

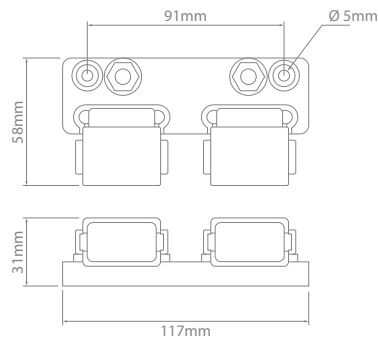
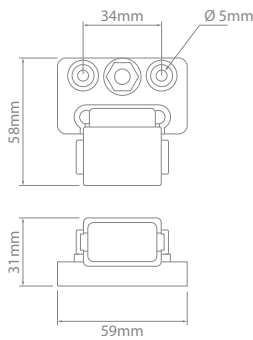


DE-BB-12

- Manufactured using original Deutsch DT Series connectors.
- Encapsulated, plug & play design.
- Environmentally sealed.
- Ignition protection – SAEJ1171.
- Compact size.
- Quick & easy install compared to traditional buss bar systems.
- Maintenance free design.
- Made in USA.

Buss :
Base :
Studs :

C1100 Electrolytic Copper
RETPU – Injection Moulded
5/16–18" Stainless Steel



DE-BB-12



DE-BB-24



DE-BB2-12

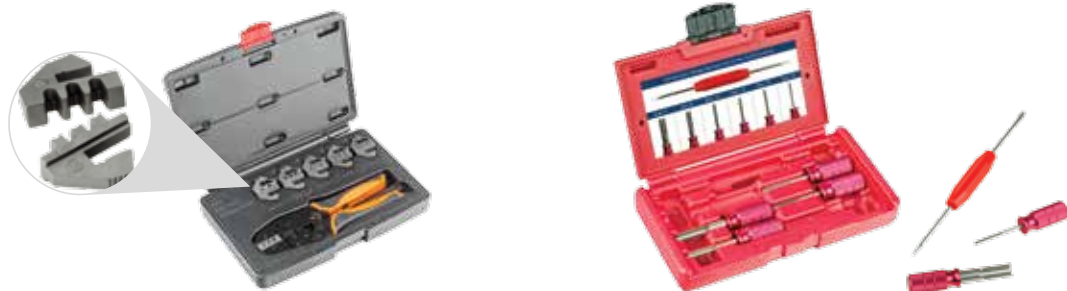
Sealed Buss Bars

Part No.	Type	Current Rating @ 48V	Mating Connector
DE-BB-12	Single	150A	DT06-12SA
DE-BB-24	Double	300A	2 x DT06-12SA
DE-BB2-12	Split	2 x 150A	DT06-12SA & DT06-12SB



Crimping Tools – Deutsch Contacts

Part No.	Description	Crimp Range (AWG)	Contact Type
DTT-16-00	Ratcheting	14 & 16	F-Crimp
HDT-04-08	—	4 & 8	Solid
DE-DET12	Ratcheting	12	Solid
DE-DET16	Ratcheting	16	Solid
DE-DET20	Ratcheting	20	Solid
DE-D2681	Ratcheting	12, 16 & 20	Solid
DE-D2682	Ratcheting	12, 16 & 20	Solid
HDT-50-00	Ratcheting	12, 16 & 20	Solid
HDT-48-00	Ratcheting	12, 16, 20 & 22	Solid
DE-DET-RT	Multi-use Hook Tool		



Tool Sets – Deutsch

Part No.	Description	Size (AWG)
DE-D7000	Ratcheting Crimp tool for F-Crimp contacts. 6 removable dies	20, 18, 16, 14, 12, 10
DE-D2683	Contact Removal Tool Set	20, 16, 14, 12, 8, 4

