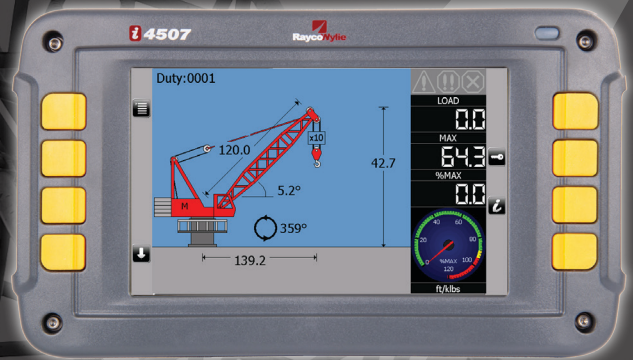


OFFSHORE CRANE MONITORING SYSTEMS



RaycoWylie
SYSTEMS

4500SERIES OFFSHORE CRANE MONITORING SYSTEMS



DISPLAY (SAFE CAB)

Size: 4.3" (16/9 ratio) / 7" (16/9 ratio) / 10.4" (4/3 ratio)
 IP Rating: IP67
 Operating Temperature: -20°C to +70°C
 Supply Voltage: 24 VDC
 Certification: BS EN 13852-1 / BS EN 13852-2



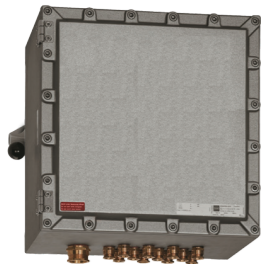
EX DISPLAY (ZONE 1 AND 2)

Stahl ET208 7" touch screen full colour panel mount display (optional enclosure)
 Size: 7" (15/9 ratio)
 IP rating: IP66 / IP54 (front/back) (IP65 back when mounted in optional enclosure)
 Operating Temperature: -40°C to +65°C
 Supply voltage: 24 VDC (Ex e) 85-265 VAC, 48-62 Hz (Ex e)
 Certification: IECEx (alternative certification available upon request)



TERMINATION UNIT (SAFE CAB)

Material: Stainless Steel (Powder Coat Black Paint)
 Size: 460mm x 440mm x 180mm
 Supply voltage: 24 VDC (85-264 VAC, 47-63 Hz)



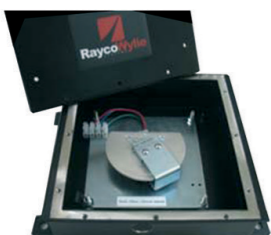
EX TERMINATION UNIT (ZONE 1 AND 2)

Material: Cast Aluminium
 Size: 500mm x 285mm x 476mm
 Supply voltage: 24 VDC
 Certification: IECEx (alternative certification available upon request)



JUNCTION BOX

Material: Stainless Steel
 Size: Various



ANGLE SENSOR

Material: Stainless Steel (Powder Coat Black Paint)
 Size: 216mm x 219mm x 162,5mm
 Operating temperature: -40°C to +70°C
 Excitation voltage: 5 VDC



CABLE GLANDS: TYPE M16

Material: Nickel Plated Brass
 Contact sleeve: Nickel Plated Brass
 Operating temperature: From -40°C to +100°C
 Protection: IP68



CABLE GLANDS: TYPE M20/M25

Material: Brass
 Operating temperature: From -60°C to +80°C
 Protection: IP68
 Reference: IECEx



LOAD LINK

Material: Stainless Steel 17-4PH
 Non-linearity and hysteresis combined: <math>< \pm 0,2\%</math> of full scale
 Operating temperature: From -20°C to +80°C
 Output signal: 1,3 mV/V typical full scale
 Excitation voltage: 5 VDC
 Protection: IP67



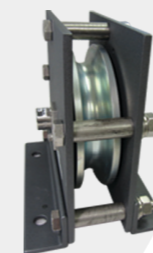
A2B SWITCH (OVER HOIST LIMIT SWITCH)

Material (switch): Stainless Steel
 Contact operation: Snap action
 Contact configuration: 1 N.O./1 N.C.
 Contact material: Silver



LOAD PINS

Material: Heat-Treated Stainless Steel 17-4PH
 Non-linearity and hysteresis combined: <math>< \pm 0,2\%</math> of full scale
 Operating temperature: From -20°C to +80°C
 Output signal: 1,3 mV/V typical full scale
 Excitation voltage: 5 VDC
 Protection: IP67

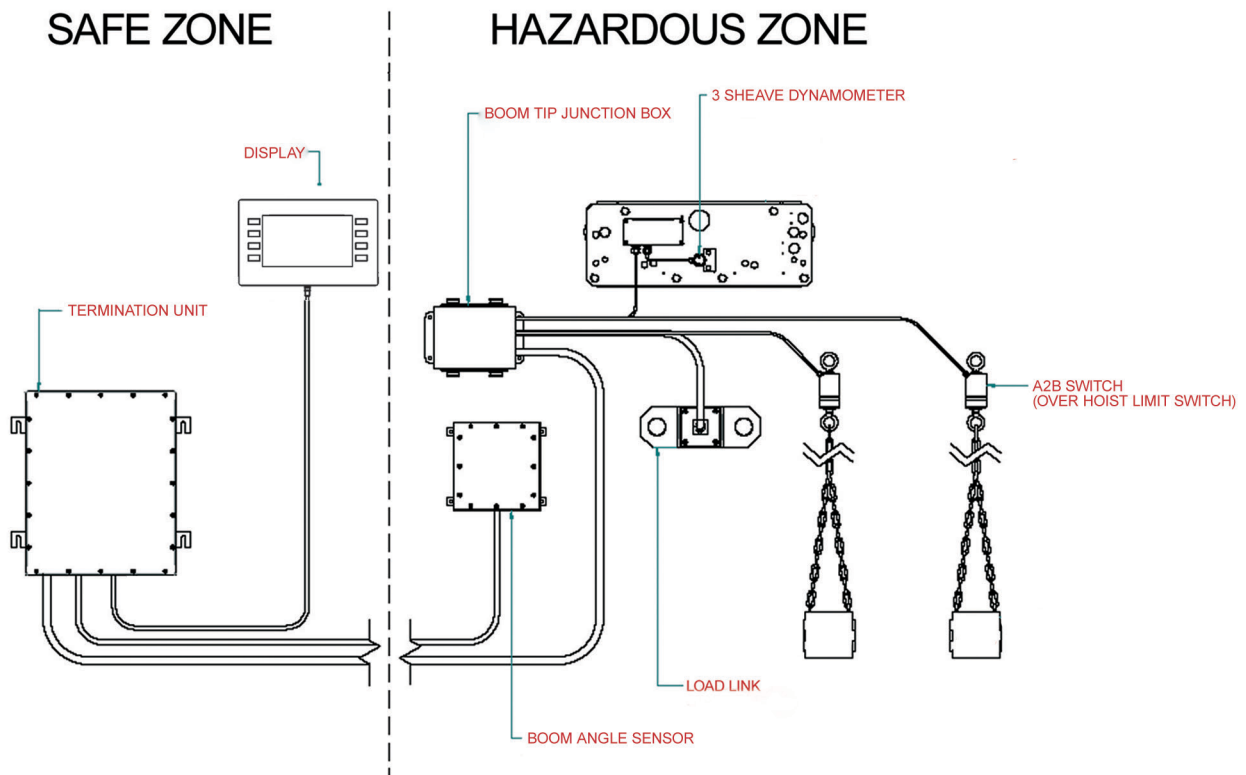


DYNAMOMETERS

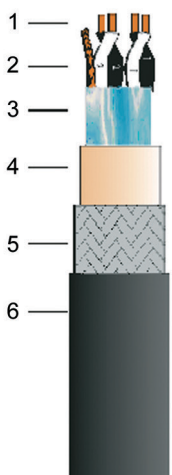
Material: Stainless steel/zinc plated steel
 Non-linearity and hysteresis combined: <math>< \pm 0,2\%</math> of full scale
 Operating temperature: From -20°C to +80°C
 Output signal: 1,3 mV/V typical full scale
 Excitation voltage: 5 VDC

i 4500SERIES OFFSHORE CRANE MONITORING SYSTEMS

TYPICAL OFFSHORE CONFIGURATION *System specific wiring diagram provided to suit application.



TYPE E34 150/250V FLAME RETARDANT collective screen halogen free



MATERIAL :

- 1 - CONDUCTOR TINNED STRANDED COPPER CONDUCTOR (BS EN 60228:2005 class 5 flexible)
- 2- INSULATION OF EPR
- 3- SCREENING COLLECTIVE SCREEN, Aluminium BACK POLYESTER TAPE WITH TINNED COPPER STRANDED DRAIN WIRE
- 4- INNER SHEATH HALOGEN FREE
- 5- ARMOUR Galvanised STEEL WIRE BRAID
- 6- OUTER SHEATH CSP OUTER SHEATH

PROPERTIES :

- FLAME-RETARDANCY TEST IN ACCORDANCE TO IEC (60) 332-3 CAT A
- OXYGEN INDEX OF SHEATHING : GREATER THAN 32%
- H.C.L. EMISSION LESS THAN 5% AT 800°C
- MELINEX TAPES BELOW AND ABOVE BRAID FOR EASE OF STRIPPING

REFERENCE :

- BS 6883-1999
- IEC (60)332-3 CAT A

*The information contained in this document is subject to change.

CANADA

RaycoWylie Systems
2440 avenue Dalton
Sainte-Foy, Quebec
Canada
G1P 3X1

T: 001 418 266 6600
F: 001 418 266 6610

UNITED KINGDOM

RaycoWylie Systems
Drury Lane
St Leonards On Sea
East Sussex
TN38 9BA

T: 0044 1424 421 235
F: 0044 1424 433 760

UNITED STATES

RaycoWylie Systems
201 Prospect Avenue,
Suite 106, Box159,
Hagerstown
MD 21742

T: 001 888 252 1957

SINGAPORE

RaycoWylie Engineering
Singapore Pte Ltd
48 Toh Guan Road East
#02-146 Enterprise Hub
Singapore (608586)

T: 0065 6908 1127
F: 0065 6795 0938

EGYPT

RaycoWylie Systems
Degla Engineering
Company, Bldg No
3035, Ring Road, Mearag
City, Maadi, Cairo, Egypt

T: 002 022 447 3896
F: 002 022 447 3895