

**Scale and Control Inc.**  
is proud to introduce the

## **WLS555 Onboard Weighing System**

# SCI

**SCALE AND CONTROL INC.**



Zebra®  
Mobile  
Printer



SCI Telematics  
Hardware

**Scale and Control Inc.** manufactures and distributes onboard weighing solutions, including our **WLS555 Onboard Weighing System** for wheel loaders, front end loaders, skidsteer loaders, and forklifts. This system can be adapted for harvesting, construction, mining, forestry, and custom applications.

- Use with any WiFi enabled smart phone or tablet as the display
- Apple™ and Android™ compatible
- Simple 3 wire installation
- Can be user installed and calibrated
- Hyper-Cal™ Automated Efficient Calibration (5 minutes or less)
- Monitor hydraulic pressure of weighed load with +/- 1% accuracy
- Telematics ready
- Track multiple attachments, materials, and customer data
- Easily view advanced diagnostics
- Extensive logging capabilities
- Optional add-ons including printer, networking, peripherals and more
- In-vehicle or network-connected printing option
- WiFi enabled display can be supplied
- Designed and manufactured by Scale and Control Inc.
- Made in USA

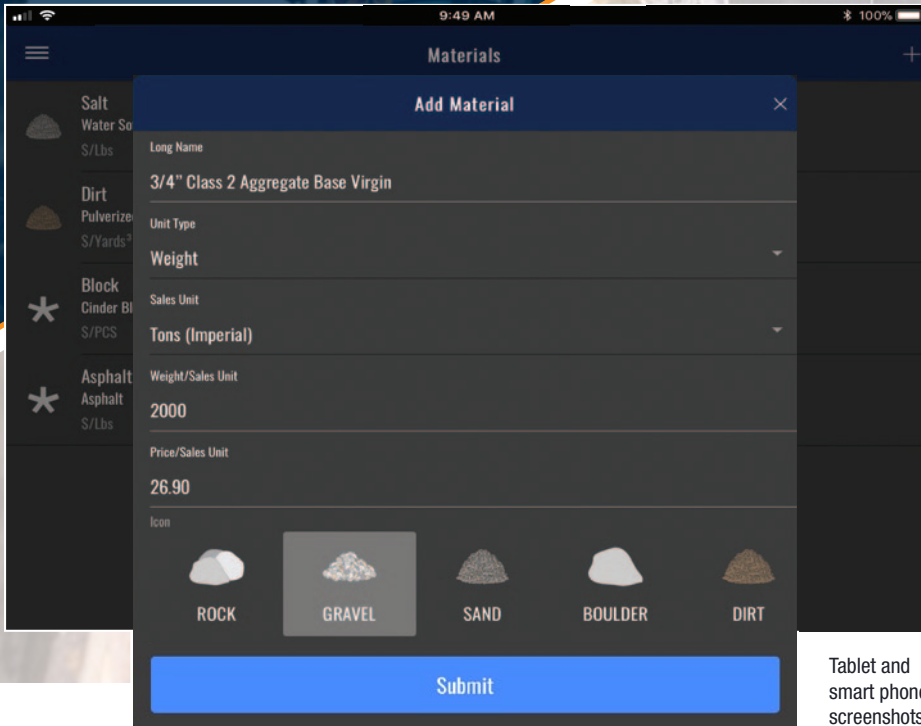
Visit:  
**SCALEANDCONTROL.COM**

Follow:  
  

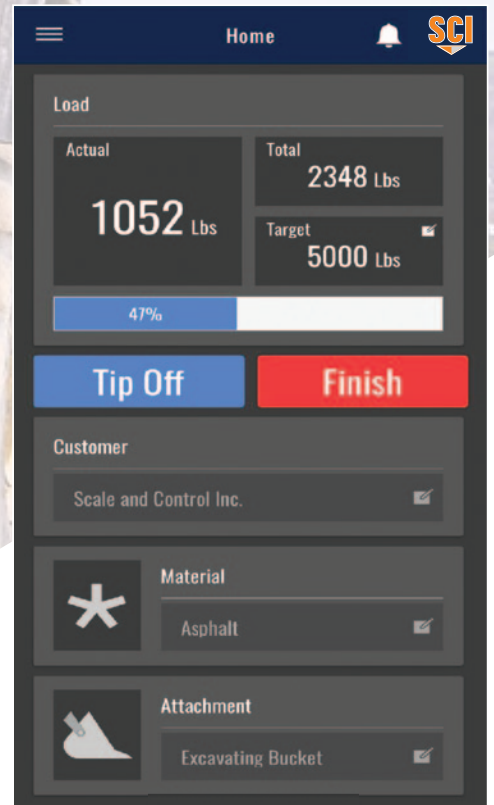
Toll Free:  
**888-239-0552**

Email:  
**sales@scaleandcontrol.com**

The new **WLS555 Onboard Weighing System** from **Scale and Control Inc.** features a robust, easy-to-navigate platform.

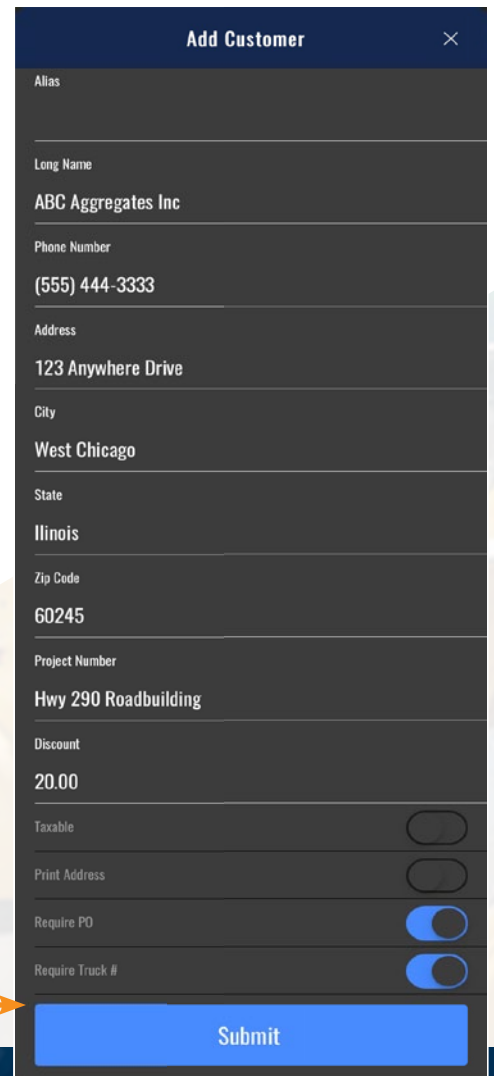
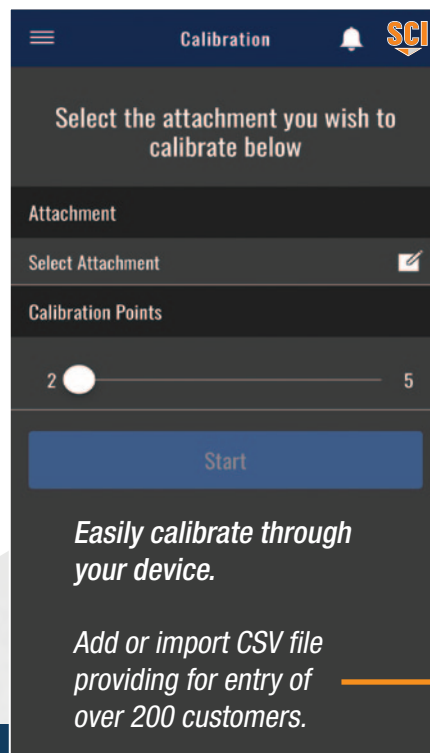
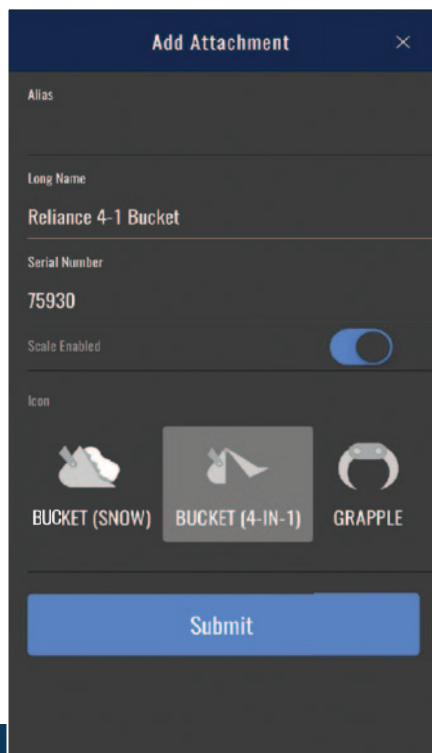


Tablet and smart phone screenshots



The **WLS555 Onboard Weighing System** is a great solution for users that want a basic loader scale to monitor load basics and ensure a properly loaded truck.

For those whose application requires more intricate data monitoring, options can be activated in the system to perform detailed monitoring, remote data communications and provide in-depth reporting.



# WLS555 Onboard Weighing System

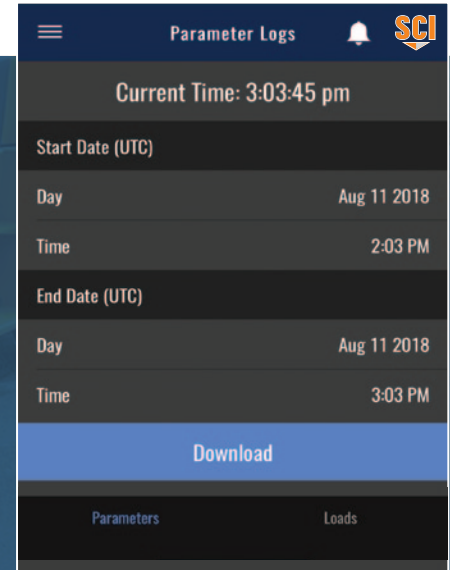
## PRINTING • REPORTING • DATA MANAGEMENT

In today's data rich market, users have diverse needs for data collection, management, and reporting. With the **WLS555 System**, metrics can be activated to provide true productivity measurements, providing data for business owners to streamline processes and get the most return on investment.

### Load Logs show up-to-the-moment data including:

- Date/time of load
- Attachment used
- Total price
- Ticket number
- Customer
- Duration of load
- PO number
- Load amount
- Tax amount
- Truck number
- Load total
- Tip off and zero loads
- Number of buckets/lifts
- Units for material
- Material type
- Price/bucket

Download as a .csv file and import into spreadsheet program or database. View use time for loading trucks, moving piles, cleaning up roads and more.



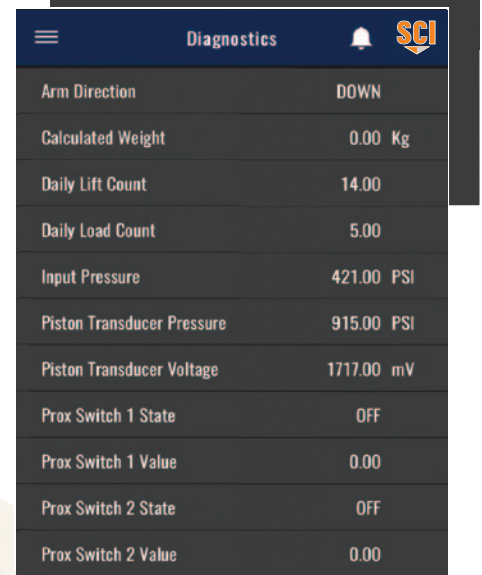
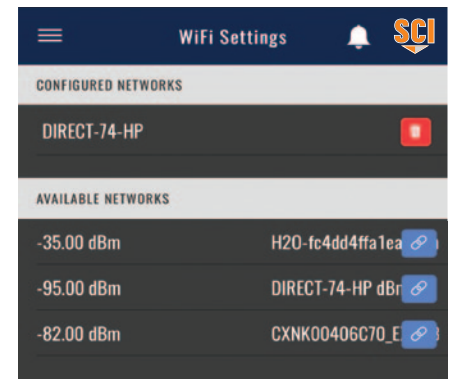
### Print from the WLS555

- Print 3" tickets in cab with the **Zebra® Mobile Printer**, re-print copies of previous tickets
- Download a PDF ticket using phone or tablet, email to external email address for print
- Print directly to an onsite scale house printer through WiFi connection

### WLS555 SCI United™

Via WiFi or cell, download Load Logs, and update settings and tables (Customer, Material, Attachments).

- WiFi, GPS and GSM Cell communication capability for 24/7 equipment monitoring
- Database access software shows location, breadcrumbs, and location mapping
- Machine metrics from CAN J1939 port to monitor messages from engine, transmission, turbo, view temperatures, pressures, on-off switch status, and more



LOAD TICKET				
INVOICE: 1007 DATE: 11.15.2018				
<b>FROM:</b> Scale and Control Inc 1234 Grand Bahamas Rd Anywhere, TX 77429 (888) 239-0552		<b>TO:</b> East Coast Aggregate 8765 Main Street West Chicago, Illinois 60186 (555) 345-1212		
<b>COMMENTS:</b> Deliver to river rd location				
OPERATOR ID	MACHINE ID	P.O. NUMBER	TRUCK NUMBER	
N/A	Deere 624k	N/A	4569	
BUCKET #	MATERIAL	QTY	UNIT PRICE	TOTAL
1	3/4" Minus Aggregate	1.57 Tons (Imperial)	\$29.75	\$46.57
2	3/4" Minus Aggregate	7.86 Tons (Imperial)	\$29.75	\$233.85
3	3/4" Minus Aggregate	7.37 Tons (Imperial)	\$29.75	\$219.19
4	3/4" Minus Aggregate	2.74 Tons (Imperial)	\$29.75	\$81.43
SUBTOTAL:				\$581.04
DISCOUNT:				(\$29.05)
SALES TAX:				\$44.16
<b>TOTAL:</b>				<b>\$596.15</b>

Make all checks payable to Scale and Control Inc.  
If you have any concerns regarding this load ticket, contact: (888) 239-0552.  
**THANK YOU FOR YOUR BUSINESS**

Scale by: **SCI - Scale and Control Inc.**  
Visit us at [www.scaleandcontrol.com](http://www.scaleandcontrol.com)



Diagnose hydraulic pressures and boom position.

Zebra® Mobile Printer



**WLS555**

# Onboard Weighing System Specifications



Standard feature allows for remote display monitoring

## System Components

Trigger Options	Prox Switch / Any N.O. Switch
Pressure Sensor	Single or dual / multiple sizes available
Remote Button Input	1-3 optional
Printer Support	Yes
Temp Compensation	Standard
Datalog Support	Standard
Connectivity Support	WiFi standard, GSM Cell/GPS optional
Programmable Outputs	Optional
WiFi Enabled Display	Cell Phone or Tablet - All Sizes

## Weighing Functions

Dynamic Weighing	Yes
Tip Off	Yes
Grand Total	Yes
Over Target	Yes
Attachments	10
Zero	Yes

## Data Functions

Materials	200+
Customers	200+
Productivity Metrics	Yes
Product Lift/Bucket Count	Yes
Total Data Items	10000+
Remote Displays	10
Onscale Reporting	Yes
Customer Data Fields	14
Material Data Fields	7
User Selectable Icons	Yes

## Power Requirements

Supply Voltage	8-32Vdc
Current Consumption	200mA Typ / 500mA Max

## Environmental Specifications

Operating Temperature	-40°F - 158°F (-40°C - 70°C)
Storage Temperature	-40°F - 185°F (-40°C - 85°C)
Protection	IP67 / IP69 sensors

*\* Specifications based on wheel loader, front end loader, skidsteer loader, and forklift applications*

**Questions? Contact Scale and Control Inc. Today!**