

The logo for Checkpoint, featuring the word "Checkpoint" in a white, sans-serif font. A yellow teardrop shape is positioned above the letter 'i'. A registered trademark symbol (®) is located to the right of the word.

Checkpoint®

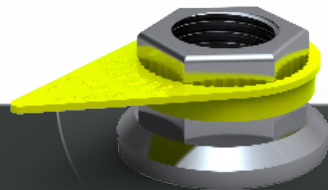
The **Original** and the **Best**

[www.checkpoint-safety.com](http://www.checkpoint-safety.com)



# CONTENTS

Introducing	01/02
Checkpoint Original	03/04
Dustite/Dustite LR	05/06
Checklink	07/08
Global Coverage	09/10
Checklock/Size Guide	11/12
Safewheel/Size Guide	13/14
Checkthread	15/16
Available Colours/Choose and Use	17/18
Contact Us	19/20



# INTRODUCING

**Checkpoint is the world leader in loose nut indicators and the man responsible for this innovative solution is our very own Managing Director, Mike Marczynski.**

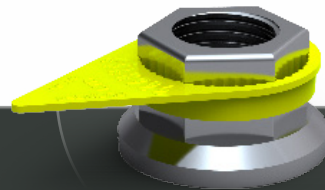
During the 1980s Mike ran a successful chemical tank cleaning company, which involved operating a fleet of vehicles, including HGVs. It was an incident involving a near wheel loss that led to his 'light bulb' moment.

Mike immediately recognised that there was a problem to which the market, at that time, offered no solution. And the Checkpoint was born!

Never a man to rest on his laurels Mike has continually developed new ideas and Checkpoint is now able to offer the widest range of products, colours and sizes in the world, distributing to 67 countries globally and counting.

Mike is still as hands on as he's ever been and his passion and enthusiasm permeates through the entire team. Recognised as an expert in his field Mike is often sought out to provide bespoke solutions to specific problems. After all, who better to solve a problem than the inventor of the solution.

**Checkpoint. The Original and the Best.**



Checkpoint®



Checkpoint®

**FOR EVERY  
NUT THERE'S  
CHECKPOINT!**

# Checkpoint ORIGINAL®

Checkpoint Original® provides a clear indication of nut movement. It was the first ever product of its kind in the global market to provide an indication of wheel nut movement on vehicles. Its application has since been introduced to different sectors in order to provide a solution to loosened nuts on plant structures, rail tracks etc.

**Primary Functions:** To indicate nut loosening and overheating.

**Primary Benefits:** Improved safety of nut fittings, facilitates quick and easy visual checks and audits. A cost effective solution reducing maintenance costs and saving time.

**Sizes:** All sizes shown to the right of the page are measured across the flat (a/f) of the nut in mm. Short and medium arrow options are also available.

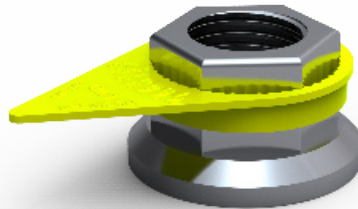
**Material:** High-grade Polymer.

**Melt Temperature:** 125°C (standard)  
165°C (high temperature)  
203°C (ultra high temperature).



\*turn to page 17 for a full range of colours

INDICATES



mm

- 17
- 18
- 19
- 20
- 21
- 22
- 23
- 24
- 25
- 26
- 27
- 28
- 29
- 30
- 31
- 32
- 33
- 34
- 35
- 36
- 37
- 38
- 39
- 40
- 41
- 42
- 43
- 44
- 45
- 46
- 47
- 48
- 49
- 50





Checkpoint®

**FOR EVERY  
NUT THERE'S  
CHECKPOINT!**

# Dustite®

Dustite® combines a nut loosening indicator and dust cap, a clear indicator of movement whilst also helping to protect the nut.

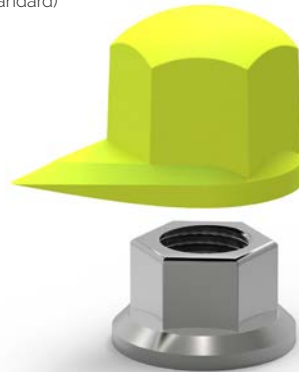
**Primary Functions:** To indicate nut loosening and overheating. Protective cap helps to prevent nut damage.

**Primary Benefits:** Improved safety of nut fittings, facilitates quick and easy visual checks and audits. A cost effective solution reducing maintenance costs and saving time.

**Sizes:** All sizes shown to the right of the page are measured across the flat (a/f) of the nut in mm.

**Material:** High-grade Polymer.

**Melt Temperature:** 125°C (standard)  
165°C (high temperature).



- mm
- 17
- 18
- 19
- 20
- 21
- 22
- 23
- 24 ●
- 25
- 26
- 27 ●
- 28 ●
- 29
- 30 ●
- 31
- 32 ●
- 33 ●
- 34
- 35
- 36
- 37
- 38 ●
- 39
- 40
- 41 ●
- 42
- 43
- 44
- 45
- 46
- 47
- 48
- 49
- 50



\*turn to page 17 for a full range of colours





# DustiteLR®

DustiteLR® (long reach) combines a nut movement indicator and dust cap. The LR is designed specifically for use on vehicle wheels with trims.

**Primary Functions:** To indicate nut loosening and overheating. Protective cap helps to prevent nut damage. Can be fitted to vehicle wheels with trims.

**Primary Benefits:** Improved safety of nut fittings, facilitates quick and easy visual checks and audits. A cost effective solution reducing maintenance costs and reducing vehicle downtime.

**Sizes:** All sizes shown to the right of the page are measured across the flat (a/φ) of the nut in mm.

**Material:** High-grade Polymer.

**Melt Temperature:** 125°C (standard)  
165°C (high temperature).



- mm
- 17
- 18
- 19
- 20
- 21
- 22
- 23
- 24
- 25
- 26
- 27
- 28
- 29
- 30
- 31
- 32
- 33
- 34
- 35
- 36
- 37
- 38
- 39
- 40
- 41
- 42
- 43
- 44
- 45
- 46
- 47
- 48
- 49
- 50



turn to page 17 for a full range of colours

INDICATES



Checkpoint®

**FOR EVERY  
NUT THERE'S  
CHECKPOINT!**

# Checklink®

Checklink® is a dual purpose loose nut indicator with a retaining function.

**Primary Functions:** To indicate nut loosening, nut over-heating and to provide a retaining function to reduce the likelihood of loose nuts.











**Primary Benefits:** Improved safety of nut fittings, facilitates quick and easy visual checks and audits. A cost effective solution reducing maintenance costs and saving time.

**Sizes:** All sizes shown to the right of the page are measured across the flat (a/f) of the nut in mm.

**Material:** High-grade Polymer.

**Melt Temperature:** 125°C (standard)  
165°C (high temperature).

mm

- 17
- 18
- 19 
- 20
- 21 
- 22 
- 23
- 24 
- 25
- 26
- 27 
- 28 
- 29
- 30 
- 31
- 32 
- 33 
- 34
- 35
- 36
- 37
- 38 
- 39
- 40
- 41
- 42
- 43
- 44
- 45
- 46
- 47
- 48
- 49
- 50



\*Turn to page 17 for a full range of colours

INDICATES  
AND  
RETAINS



# Check



Currently exporting products to over

kpoint®



over 67 countries across the globe

# Checklock<sup>SQ</sup>®

ChecklockSQ® helps to retain two adjacent nuts. Its coil-like structure reduces the likelihood of nuts loosening.

**Primary Functions:** Provides a retaining function, reducing the likelihood of nuts loosening.

**Primary Benefits:** Improved safety of nut fittings, facilitates quick and easy visual checks and audits. In most cases can be fitted without any special tools. A cost effective solution reducing maintenance costs and saving time.

**Sizes:** Size guide shown on page 12.

**Material:** High quality premium Stainless Steel

Stainless  
Steel

RETAINS

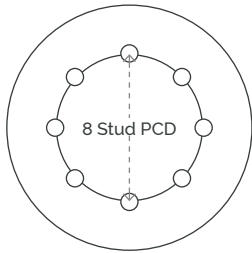
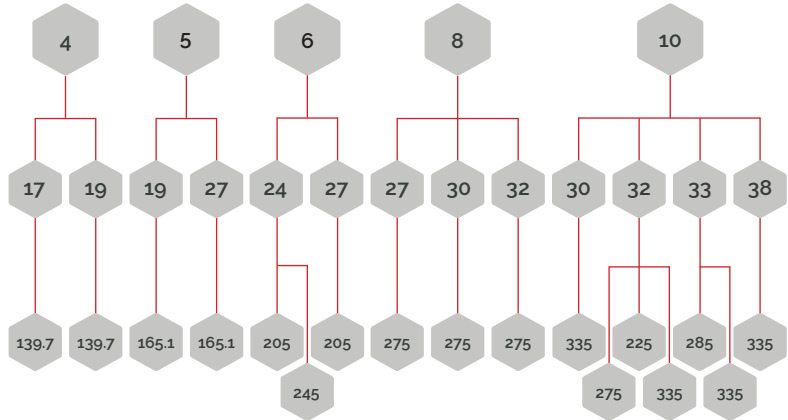


# Checklock<sup>®</sup> SQ SIZE GUIDE

How many studs do you have?

Nut size (across the flats) mm

PCD (pitch circle diameter) mm



## Pitch Circle Diameter (PCD) explained

Measure from the centre of any stud on the wheel to the centre of the stud directly opposite (mm).



# Safewheel®

Safewheel® is a durable, reusable and simple to use wheel nut retaining ring, protecting nuts from damage.

**Primary Functions:** A one-step solution to providing a retaining function helping to reduce the likelihood of wheel nut movement.

**Primary Benefits:** Improved safety of nut fittings. A cost effective solution reducing maintenance costs and saving time. Visually attractive and pedestrian friendly.

**Sizes:** Size guide shown on page 14.

**Material:** High-grade Polymer.

**Operating Temperature Range:** -40°- +120°C.



\*turn to page 17 for a full range of colours



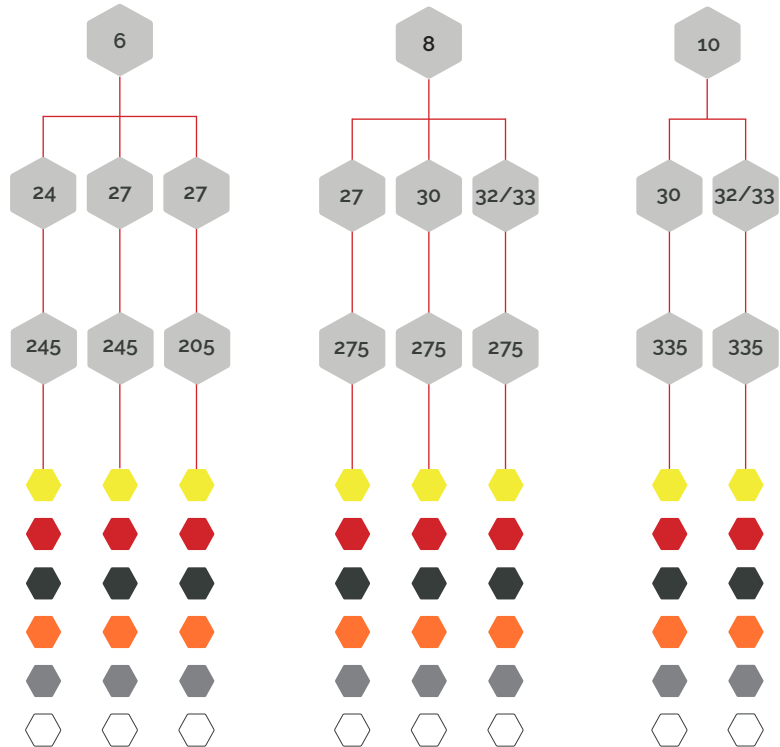
# Safewheel<sup>®</sup> SIZE GUIDE

How many studs do you have?

Nut size (across the flats) mm

PCD (pitch circle diameter)

All colours available



\*see page 12 for full PCD explanation.

# Checkthread®

The Checkthread® kit is designed to facilitate the monitoring of wheel stud quality and stud hole integrity. It also determines the correct nut type to be used with a wheel.

**Primary Functions:** To monitor wheel stud quality and stud hole integrity.

**Primary Benefits:** Indicates whether wheel studs are of poor quality, stretched, damaged or ill-fitting, reducing the risk of accidents occurring.

**Kit Components:** Thread testers quickly highlight problems with the stud thread that aren't always obvious under visual inspection. SHET (stud hole elongation tester) identifies any elongation of wheel stud holes. Conical/Spherical tester determines the correct nut type to be used with a wheel.

**Sizes:** Thread testers in M18, M20, M22 and Scania standard thread sizes. Stud hole elongation tool (SHET) in 21mm, 24mm and 26mm.

**Material:** High quality premium Stainless Steel (thread testers).



Stainless  
Steel



Checkpoint<sup>®</sup>

**FOR EVERY  
NUT THERE'S  
CHECKPOINT!**

# AVAILABLE COLOURS

**Checkpoint<sup>ORIGINAL</sup>**



**Dustite<sup>®</sup>**



**Dustite<sup>LR</sup>**



**Checklink<sup>®</sup>**



**Checklock<sup>SQ</sup>**



**Safewheel<sup>®</sup>**



**Checkthread<sup>®</sup>**



\*other colours can be made available subject to quantity.

# CHOOSE AND USE

	CV	Bus	Rail	Mining	Agriculture	Structure	Retain	Protective Cap	Indicates Movement	Indicates Overheating
<b>Checkpoint<sup>ORIGINAL</sup></b>	●	●	●	●	●	●			●	●
<b>Dustite<sup>®</sup></b>	●	●		●	●			●	●	●
<b>Dustite<sup>LR</sup></b>	●	●		●	●			●	●	●
<b>Checklink<sup>®</sup></b>	●	●		●	●	●	●		●	●
<b>Checklock<sup>SQ</sup></b>	●	●	●	●	●	●	●			
<b>Safewheel<sup>®</sup></b>	●	●		●			●	●		●
<b>Checkthread<sup>®</sup></b>	●	●								

\*all our products are to be used in conjunction with regular maintenance procedures.

# CONTACT US

## General Enquiries

[sales@checkpoint-safety.com](mailto:sales@checkpoint-safety.com)  
+44 (0)15242 71200

Mike Marczynski | [mikem@checkpoint-safety.com](mailto:mikem@checkpoint-safety.com)  
Managing Director

Les Ford | [lesf@checkpoint-safety.com](mailto:lesf@checkpoint-safety.com)  
Director of International Sales

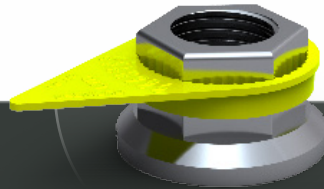
Paul Dew | [pdew@checkpoint-safety.com](mailto:pdew@checkpoint-safety.com)  
UK Sales Manager

Wendy Vaughan | [wendyv@checkpoint-safety.com](mailto:wendyv@checkpoint-safety.com)  
Sales Development - English and Portuguese-Speaking Markets

Martin Balcells | [martinb@checkpoint-safety.com](mailto:martinb@checkpoint-safety.com)  
Sales Manager - French-Speaking Markets

Alex Deremez | [alexandred@checkpoint-safety.com](mailto:alexandred@checkpoint-safety.com)  
Sales Development - French and Spanish-Speaking Markets

Dr. Vivien Hacker | [vivienh@checkpoint-safety.com](mailto:vivienh@checkpoint-safety.com)  
Sales Consultant - German-Speaking Markets



Checkpoint<sup>®</sup>





Checkpoint<sup>®</sup> is a trading name of Business Lines Ltd.

Company registration number: 1988026

Registered address: Unit 9 Kellet Road Industrial Estate, Carnforth, Lancashire, LA5 9XP, UK

Tel: +44 (0)1524 271 200 Fax: +44 (0)1524 271 209 Email: [info@checkpoint-safety.com](mailto:info@checkpoint-safety.com)

[www.checkpoint-safety.com](http://www.checkpoint-safety.com)