



2016 Annual Report



The Loring Greenway is a heavily used pedestrian walkway between the southern end of Nicollet Mall and the residential neighborhoods that surround Loring Park in Minneapolis, Minnesota. The vision of the Loring Greenway Association is for the Loring Greenway to be one of the most beautiful and engaging urban walkways in the United States. To that end, the non-profit, volunteer Loring Greenway Association strives to provide a world-class park environment to Greenway users and to foster a sense of residential community.

About the Loring Greenway Association

As the result of its fundraising activities and volunteers' time, the Loring Greenway Association (LGA) plants and maintains the flowering annuals, perennials, shrubs and trees along the Loring Greenway. It saved the Greenway's many ash trees from the Emerald Ash Borer beetle through an inoculation program. The organization maintains a website, loringgreenway.org, to help communicate with its community of active volunteers and donors.

The Year in Review

Thanks to the support of our generous donors and volunteers, the Loring Greenway again beckoned Minneapolis residents and visitors with its combination of colorful flowerbeds, tranquil shade gardens and grassy stretches in downtown Minneapolis. As weather and age take their toll, maintaining this beautiful urban passageway requires year-round efforts; as the seasons cycle so do the activities associated with designing, ordering, planting, nurturing, controlling and rejuvenating the flora of this inviting space. Accomplishments of 2016 include the following:

- Several new pollinator gardens were planted, drawing monarch and other butterflies and honeybees.
- Our gardener leaders directed 200 volunteers from Target Corporation to spade in hundreds of perennials and annuals during two high-energy days in May.
- A large native shade garden was installed in a densely dark section of the Greenway, paid for by a special gift from two local residents.
- A highly respected landscape architect provided bold designs pro bono, leading to an increase in sustainable perennials in several Greenway gardens and berms.
- Working in concert with Minneapolis Public Works, the Association made several significant masonry improvements, including replacing a huge pavement section on the Lasalle Street bridge and restoring tiles on the Greenway's middle fountain.
- We extended the distribution of our French bistro chairs and tables throughout the entire Greenway, resulting in increased use by residents and visitors.
- We reversed a slow decline in individual donors with new strategies and efforts by our Board of Directors during LGA's spring donor campaign.
- The Hyatt Regency Hotel sponsored an LGA Donor/Gardener "Thank-You" event in January.
- Several new trees were gifted and planted under supervision of board member Lee Frelich, Director of the University of Minnesota Center for Forest Ecology.
- On Labor Day, the *Minneapolis StarTribune's* lead editorial spotlighted Loring Greenway's landscape resurgence, calling it downtown's "lovely...gem of green space" and calling for "a broader partnership of downtown businesses and other property owners to enhance and maintain the greenway."
- For the seventh consecutive year Loring Greenway won a Minneapolis Downtown Improvement District Greening Award, recognized in 2016 as the Best Large Green Space.

In addition to its many donors and volunteers, the LGA appreciates the pro bono design by landscape architecture firm Damon Farber for adding dramatic lighting, flexible seating, colorful banners and directional signage; the pro bono garden designs of Guy Mueller of Guy Mueller & Associates; the tireless efforts of Mark Clark of Minneapolis Public Works in helping to keep the bistro chairs and tables organized; the winter storage of that furniture that the Loring Green West Condominiums provide; and the substantial support of the Minneapolis Hyatt Regency Hotel for LGA events.

2016 Detailed Activity Reports

Trees

Several cedar trees along the Greenway Gables wall near the playground were replaced during spring 2016, either due to winter browning or damage from the adjacent siding-replacement project. Slowly we are achieving a solid row of cedars that are well established and resistant to winter damage.

One locust tree on the north side of 210 W. Grant, in the shade garden, has developed a large split and may have to be removed, pending the decision of the Minneapolis Park and Recreation Board foresters.

Three new Kentucky coffee trees were planted in the small lawn space above the playground. These are memorials for Herb Cheever, Evelyn Margaret Schweinler and the Rengstorff family.

A witch hazel was planted on the plaza area near the Willow Street end of the Loring Greenway. This native large shrub/small tree species is the only species that starts blooming in November.

Diervillas planted under the two linden trees on the north side of 110 Grant died during the winter of 2015-2016, and the area was replaced with grass during spring and summer of 2016. Winter winds blow the snow away so the soil freezes unusually deep. This has always been a problem area for establishment of any type of plants. With no success of the Diervillas, we have officially given up on planting the area with any type of perennials or shrubs.

Board member Lee Frelich advises the LGA on tree selections and works with Rainbow Tree Care on pruning, fertilizing and maintenance. Lee also facilitates the tree donation program.

Gardening and Landscaping

New Designs

A lot has happened on the Greenway this year. We were fortunate to have the pro bono landscape design services of Guy Mueller of Guy Mueller & Associates to design several new gardens to attract butterflies and bees and to beautify the Greenway. We emphasized native plants and the planting of perennials this year. The new gardens include the Grant Street Gardens at the Grant Street entrance, the Native Shade Garden along the 210 Grant Street building, and the Aspen Glade Garden at the end of the 110 Grant Street townhouses. In addition, all of the pocket planters along the berms and the pyramids were planted with perennials, with annuals on the tops of the pyramids. Lee Frelich, Nicholas Deacon and Guy Mueller collaborated on the design and plant selection of the Native Shade Garden.

Special Contributions and Volunteer Efforts

In May more than 850 plants were installed in a native shade garden with help of Target Corporation volunteers, adding to the existing hydrangeas, ostrich ferns and hostas. This was a major step towards creating a highly diverse woodland garden with a tapestry of green textures and color. Two plaques were placed there to thank Helen Metz and Ray Harris for their contribution to establish the garden. The first states, "Showcasing the diversity of Minnesota native plants adapted to shady environments"; the second reads, "We dedicate this shade garden in appreciation of the Loring Greenway volunteers."

Target Corporation and the Target Volunteer Council sponsored most of the other new pollinator/butterfly gardens and provided 200 volunteers to help plant all of the new perennials over a period of two days in May. Saturday volunteers completed the planting of the annuals and a new, additional herb garden planter.

Over 2,000 volunteer hours contributed to the operation of the Greenway in 2016. In addition to the regularly scheduled monthly Saturday gardening days, many volunteers, including seven from The Ackerberg Group,

provided a helping hand other days. A team of dedicated volunteers watered and weeded gardens throughout the summer. In addition to our gratitude to the many volunteers, we are grateful for the financial support of the individuals, building associations and businesses that contributed funds toward the gardening efforts on the Greenway.

Awards

The Loring Greenway won the 2016 *Best Large Green Space Award*, which is granted by the Minneapolis Downtown Improvement District (DID). The Greenway also contributed to the Loring Park neighborhood being named the Best Minneapolis Downtown Neighborhood. Both awards were determined through voting by Minneapolis residents and businesses. This marked the seventh consecutive year that the Loring Greenway has won a DID Greening Award.

Metro Blooms also recognized the Loring Greenway with a 2016 *Exceptional Garden Award*, its highest award category, for "helping to heal and protect our environment and for making Minneapolis a more beautiful city with your outstanding garden." Evaluation criteria included visual impact; plant variety and health; design; maintenance; and environmental stewardship.

Fencing

In 2016 the board decided upon the type of fencing that will be placed around some of the more sensitive garden areas during the summer of 2017. A wide range of fencing options was explored with consideration towards initial cost, maintenance cost, appearance and effectiveness. Permanent fencing solutions were avoided because of concern about potential damage by trucks and other maintenance vehicles accessing the Greenway to trim trees, remove snow, and perform other upkeep. The board ultimately selected simple metal hoops like those used at the Minnesota Landscape Arboretum. These hoops are appealing because they are low in cost, can be moved around as needed, can be made in different sizes, and do not detract from the beauty of the gardens. A sample of the hoops is already in place at the Grant Street entrance.

Gardening Leadership

Many thanks to the Garden Committee for their dedication, creativity and hard work.

Gardening Committee Chair	Mary Maier
Gardening Coordinators	Paula Buckner and Merry Keefe
East Section Leader	Marsha Weidenhammer
Center Section Leader	Fred Aden
West Section Leader	Richard Anderson
Berms	Nicholas Deacon
Garden Designs	Guy Mueller
Garden Committee Members	Fred Aden, Richard Anderson, Paula Buckner, Nicholas Deacon, Lee Frelich, Merry Keefe, Peggy MacRae, Mary Maier, Guy Mueller, Jane Nevin, Claire Selkurt, Marsha Weidenhammer

Partners

- City of Minneapolis Public Works employee Mark Clark mows the lawn areas, sweeps, clears leaves and snow, removes trash, replaces light bulbs, completes other City of Minneapolis tasks, and contributes assistance as requested by the LGA gardening team. He provides a positive presence on the Greenway and increases its safety.
- City of Minneapolis plumbers maintain the fountains and the irrigation system.
- The Minneapolis Park and Recreation Board provides tree removal and pruning.
- Rainbow Tree Care, contracted by LGA, fertilizes trees, treats ash trees for Emerald Ash Borer and provides pruning services.
- Outside contractors, contracted by LGA, prune shrubs and add mulch, boulders and other features.

Major Plans for 2017

- Add new pollinator and butterfly-attracting gardens
 - Partner again with the Target Volunteer Council
 - Install protective, modular fencing for vulnerable gardens
 - Expand our volunteer base with new residents and corporations
-

Lighting and Infrastructure

Discussions with Minneapolis Public Works continued regarding the possibility of extending electrical service for tree twinkle and up-lighting at Loring Greenway's Nicollet Mall entrance. However, further exploratory conversations were put on hold until the Nicollet Mall reconstruction is completed.

The LGA Board of Directors approved purchasing winter seasonal LED string lighting and contracted its installation for placement on three trees adjacent to the Minneapolis Hyatt Regency Hotel. The Hyatt provided pro bono the electrical power for the lighting.

Minneapolis Public Works repaved a large section of cement aggregate over the Lasalle Street bridge that had been deteriorating for several years. Public Works also assigned a masonry employee to rebuild and replace tiles on the middle fountain and its adjacent structure; several other sections of bricks on pergolas and walls were repaired over the summer.

Little Free Library

This popular addition to the Loring Greenway has grown in usage over the past three years. In 2016, it was even a PokeStop in the Pokémon GO game. With donations from nearby residents, including more than 800 books from Loring Green East, and with volunteers from the Loring Green East book club stocking it regularly, the library offered passersby a rich assortment of books—mysteries, how-to, history, cookbooks and more. Even a book in Japanese about mathematics, and another about the beginning of astrophysics, found readers.

There will soon be a refurbished Little Library replacing the one that has endured sun, rain and snow and shows it. Westminster Church is redoing its plaza and donated its Little Library to the Loring Greenway. After sanding and repainting, it will be an attractive replacement for years to come.

Safety and Security

Unfortunately, 2016 saw an uptick in dangerous activity close to the Loring Greenway, in the area of Lasalle and Nicollet Avenues south of Grant Street. LGA board member Mike Troje participated in a meeting of area business owners with Precinct 1 commander, Inspector Michael Sullivan, where they expressed deep concern about the dangerous activity. He also corresponded with City Council member Lisa Goodman, Police Chief Janeé Harteau and Mayor Betsy Hodges. In response, Inspector Sullivan and Ms. Goodman have both stated that police activity will increase significantly in this area. There is a proposal before the city council to spend an additional \$250,000 over the next year and thereafter to increase police presence in this area, which Lisa Goodman expects to pass.

Three sexual assaults on the Greenway were reported during 2016, one in March at 11pm and two in August at 9pm and 2pm. There were no other crimes on the Greenway reported to the police.

Mike Troje will continue to meet regularly with local business owners and police officers working in the area to address any Loring Greenway security issues, and to meet with city employees and volunteers working in and around Loring Park.

Communications

The LGA website was updated regularly to inform volunteers, donors and the public of gardening activity, special events and board meetings. The website is slated for an overhaul in 2017 to improve its usefulness as a timely communication tool.

The LGA also continued use of email to inform subscribers of volunteer opportunities, gardening activities, events and other pertinent Association updates. The board encourages anyone interested in receiving these updates to become a subscriber by registering online through the website (www.loringgreenway.org) or in person at a Saturday gardening event.

Fundraising

LGA created a special fundraising task force to address a slow decline in both the number of individual donors and total revenue raised over the last few years. It conducted focus groups in four condo association buildings, which led to a change in LGA's individual donor campaign messaging and marketing. The task force also upgraded the way in which the spring donor campaign was executed. The special efforts paid off in more donors and greater revenue raised during the spring donor campaign.

2016 Board of Directors

Home Owner Association Representatives

1200 on the Mall: Nicholas Deacon
Greenway Gables: Open
Loring Green East: Pat Davies
Loring Green West: Monica Marx
Loring Way: Doug Wallace
The Tower of 1200 on the Mall (1225 Lasalle): Kristin Berns

Members at Large

Paula Buckner (Loring Way)
Lee Frelich (Loring Way)
Merry Keefe (Loring Way)
Linda Luksan (Greenway Gables)
Mary Maier (Loring Green East)
Jessica Shelby (Hyatt Hotel)
Thomas Slotnick (Greenway Gables)
Bill Snyder (Loring Green East)
Mike Troje (Greenway Gables)
John Van Heel (110 West Grant)

Officers

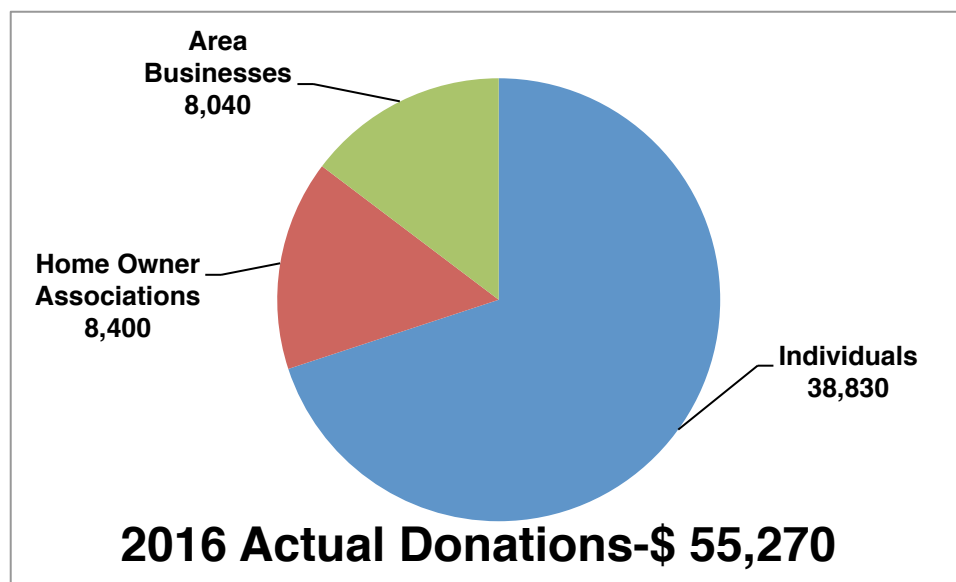
President: Tom Slotnick
Vice President: Doug Wallace
Secretary: Linda Luksan
Treasurer: Bill Snyder

2016 - 2017 Financial Report

2016 Results

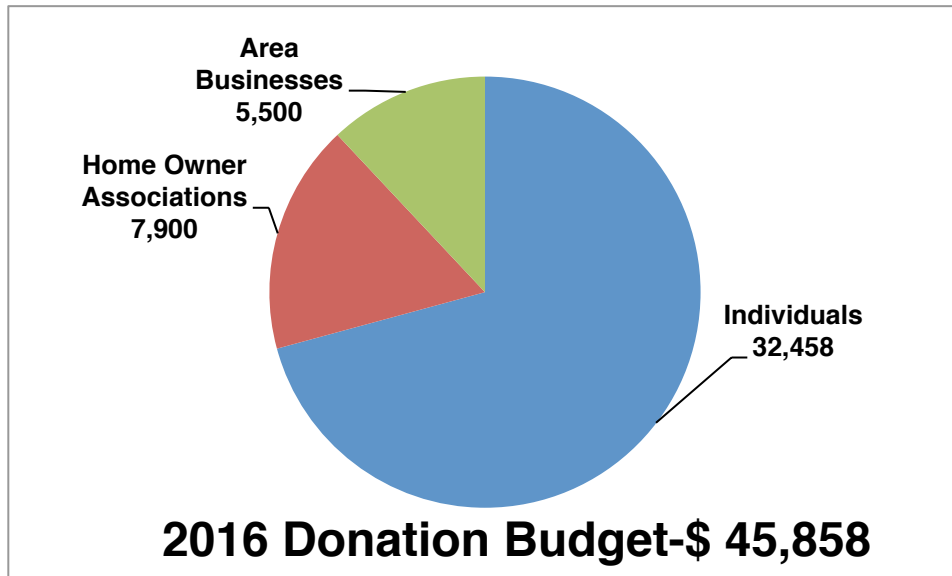
Donations

Donations in 2016 from all sources totaled \$55,270. Donations from individuals accounted for 70% of the monies received for the care of the Greenway. The second major source of funds is the six neighboring apartment and condo associations that border the Loring Greenway. The Target Corporation made an in-kind donation of close to \$5,000 of plant material, which is not reflected in the financial charts that follow. Finally, the Hyatt Regency Hotel, First Service Residential and Fine Associates LLC, property management firms, are active partners in supporting the Greenway. Aside from donations, \$6,704 was received to reimburse the Association for damages done to the Greenway by a construction firm working on a neighboring condo. No funding is received from the city of Minneapolis or the city's public works operation.



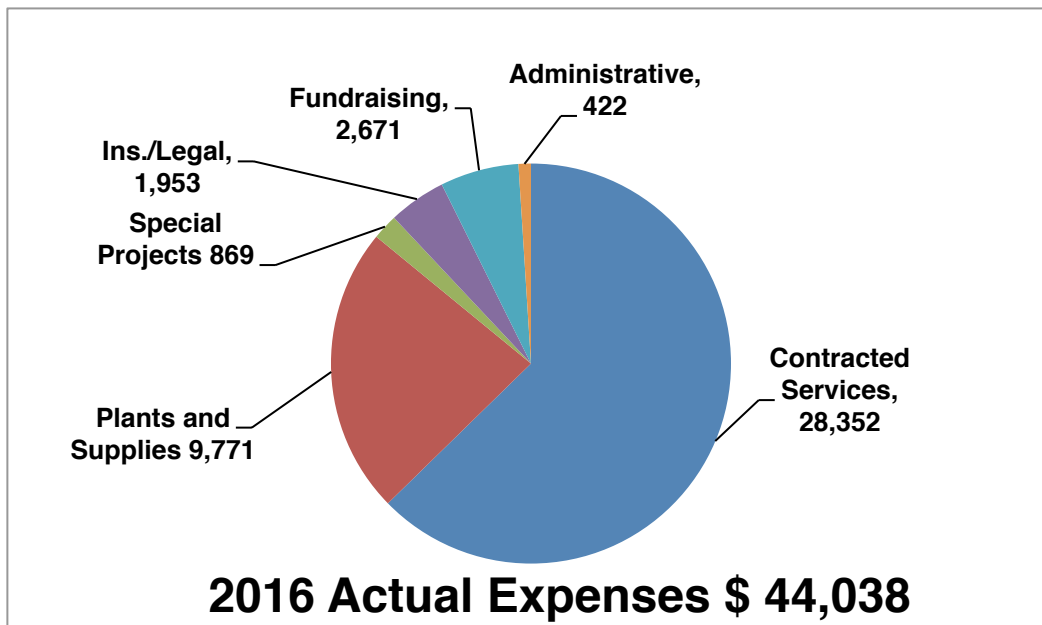
Total donations exceeded the 2016 budget by \$9,412 or 21%. Donations from individuals were the principal source of gains to budget. These donations exceeded plan by \$6,372, an excess of 20%. This favorable performance came from both normal fundraising efforts and funding special programs, such as the Shade Garden and Tree Replacement Programs. Donations from area businesses exceeded expectation with a new donation from Fine Associates, LLC. The contractor's reimbursement, which was not budgeted, accounted for 42% of the excess to budget.

	\$ Actual Donations	\$ Budget	\$ Fav/(Unfav)	% Fav/(Unfav)
Individuals	38,830	32,458	6,372	20%
Home Owner Associations	8,400	7,900	500	6%
Area Businesses	8,040	5,500	2,540	46%
Total Donations	55,270	45,858	9,412	21%
Damage Reimbursement	<u>6,704</u>	<u>0</u>	<u>6,704</u>	=
Total Donations/Other	61,974	45,858	16,116	35%

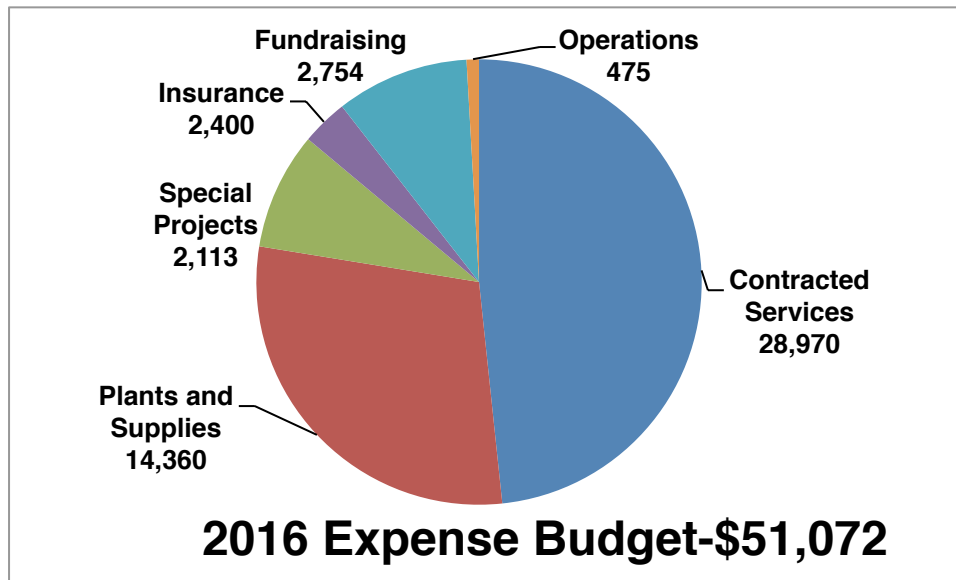


Expenses

Total expenses for the year were \$44,038, or \$11,233 less than donations. A shortfall was planned at the year's beginning. The care of the Greenway, plants and supplies and contracted services, amounted to \$38,123 or 87% of total spending. This amount does not include nearly \$5,000 of plant material purchased and donated by Target Corporation. In addition, expenditures for new trees amounted to nearly \$800. Fundraising costs were \$2,671 or 6%. Administrative spending totaled \$2,375 or 5% of total spending. These administrative costs included nearly \$2,000 for insurance coverage, most of which is mandated in the Association's contract with the city.



2016 Actual Expenses	Amount	% of Total
Contracted Services	28,352	65%
Plants and Supplies	9,771	22%
Special Projects	869	2%
Insurance/Legal	1,953	4%
Fundraising	2,671	6%
Administrative	<u>422</u>	<u>1%</u>
Total Expenses	44,038	100%



In total, spending was favorable to budget by \$7,034 or 14%. Most of the savings were gained by reduced spending for plants and supplies, which was facilitated by the generous gift of plant material provided by the Target Corporation. Savings in contracted services accrued by use of more volunteers.

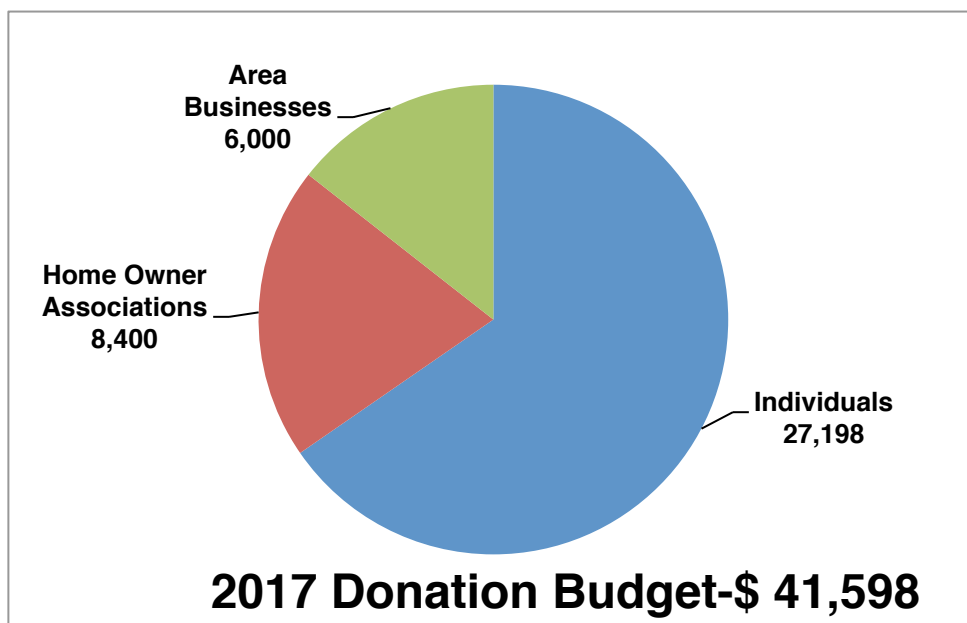
2016 Actual/Budget	Actual	Budget	\$ Fav/(Unfav)	% Fav/(Unfav)
Contracted Services	28,352	28,970	618	2%
Plants and Supplies	9,771	14,360	4,589	32%
Special Projects	869	2,113	1,244	59%
Insurance/Legal	1,953	2,400	447	19%
Fundraising	2,671	2,754	83	3%
Administrative	<u>421</u>	<u>475</u>	<u>54</u>	<u>11%</u>
Total Expenses	44,038	51,072	7,034	14%

The surplus in donations compared to expenses resulted from a generous in-kind donation of plant material from Target Corporation, a significant individual donation for the shade garden, and favorable donation performance compared to budget. With the receipt of funds for damages to the Greenway by a contractor, year-end cash balances increased to \$44,263. This amount permits the Association to develop aggressive spending plans for 2017 for major projects such as fencing, storage units, signage and further additions to the shade garden.

2017 Financial Plan

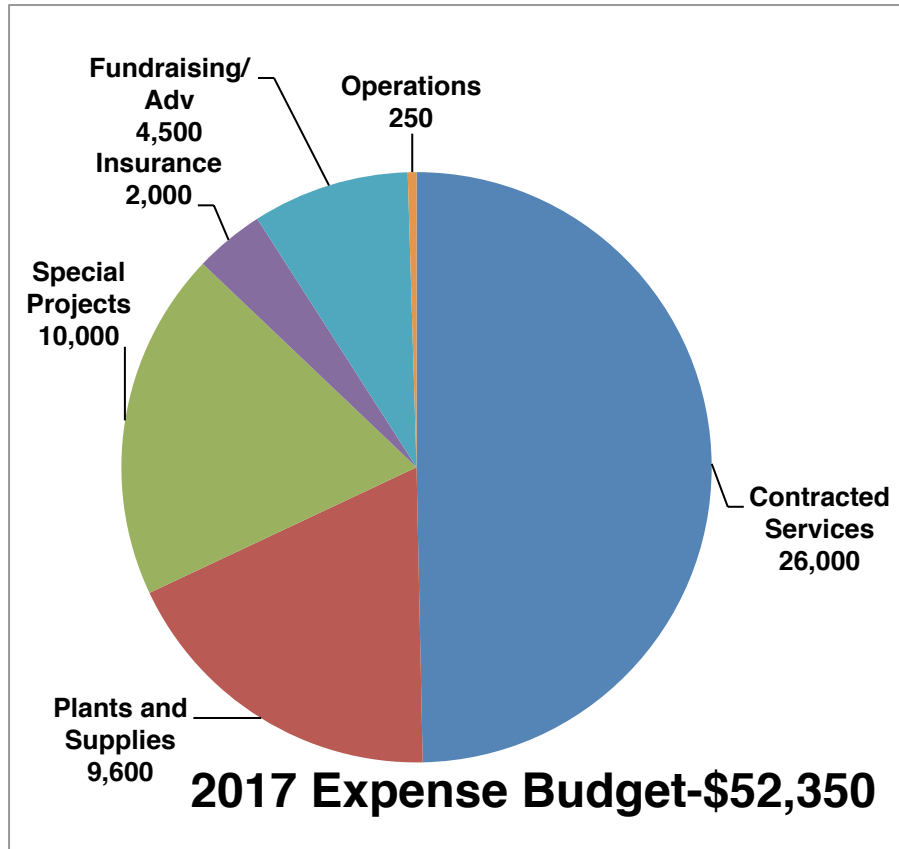
Donations

For conservative financial planning purposes, the Loring Greenway Association board set its donation forecast for 2017 of \$41,598, in line with the historic trends prior to 2016. The board felt that some abnormal gifting was gained in 2016 that should not be anticipated in 2017.



Expenses

Expenses in 2017 are planned to increase by \$8,312 to \$52,350, an increase of 19% over 2016 actual spending. New funding is set in to provide for permanent fencing to protect the gardens from canines and misdirected traffic. With these spending plans, nearly 87% of the LGA expenses will go to the care and enhancement of the landscape. New monies, \$2,000, are provided for advertising and public relations.



The donations and expenses contained in the 2017 financial plan generate an excess of expenses to donations of \$10,752. Year-end, December 31, 2017, cash balances of \$33,511 will result, placing the Loring Greenway Association in a comfortable position for placing orders for plant materials early in 2018 and planning for new projects.

2016 Volunteers

Loring Greenway Association is 100% a volunteer organization. In 2016, 295 volunteers contributed more than 2,300 hours to gardening and maintaining the Loring Greenway, and an additional 1,190 hours to administration and events.

Gardening volunteers came from the nine buildings on the Greenway and from community and corporate volunteer groups. Not everyone who volunteered signed in, so only a partial list of gardeners follows. The Loring Greenway Association thanks EVERYONE who helped!

Fred Aden
Richard Anderson
Nettie Andrews
Regina Birchen
Donovan Brausen
Jan Buckner
Paula Buckner
Dennis Callahan
Hal Chader
Pat Davies
Fritz Deacon
Graham Deacon
Nicholas Deacon
Richard Evidon
Kate Finsness
Mary Faith Fox
Lee Frelich
Bette Goldberg
Betty Heefner
John Heefner
John Heinrichs
Jotta Heinrichs
Tom Helfren
Hope Hensley
Peggy Houston
Peggy Hunter
Bridget Hust
Carl Johnson
Carol Johnson
Sue Jones
Nan Kalke
Miriam Karmel
Merry Keefe
Mary Alyce Krohnke

Kathy Larson
Susan Lasoff
Tom Law
Diana Legg
Linda Luksan
Peggy MacRae
Helmut Maier
Mary Maier
Sally Martineau
Kathryn McConnell
David Miley
Nancy Miller
Jane Nevin
David Olson
Nancy Olson
Ruth Olson
Don Ostrom
Don Rudrud
Dick Sandberg
Claire Selkurt
Ken Shain
Tom Slotnick
Bill Soth
Roxy Soth
Monica Sullivan
Margy Meade-Troje
Michael Troje
Diana Ursin
Tom Ursin
Leigh Wahlroos
Teresa Wahlroos
Doug Wallace
Kurt Weidenhammer
Marsha Weidenhammer

2016 Donors

\$1,000 or more

Bob and Nancy Anderson Family Fund of the
Minneapolis Foundation
Ray Harris
Helen Metz

\$500 to \$999

Thomas and Mary Beaumont
Carol Fitzpatrick
Peggy MacRae
Jane Nevin
Viv Rengstorff
Wally and Marilyn Small
John and Marcia Stout
Paula Vesely
Doug Wallace and Peggy Hunter
William and Julie Weiler
James Wickham

\$250 to \$499

Henry Cousineau
Michael Edwins
Robert L Falk
Terence Fruth
Donald Helgeson
Donald and Joanne Heltner
Dennis and Nora Hunchar
Norman Jense and Joyce Sheffer
Ted and Mary Loftness
Helmut and Mary Maier
Tim and Monica Marx
Curtis Micka
Steve Millikan
Bruce and Jane Nelson
Joyce Sheffer
Bill and Rozanne Soth
Mark and Julie Spiros
Judy and Mark Tucker

\$100 to \$249

Mike Addy
Fred Aden
Jon and Jean Albrightson
Richard Anderson
Winnie Anderson
Greg Anthony
Karen Bachman

Virginia Barzan
John Beal and Barb Brin
Anita Benne and Ron Christianson
James and Ruth Ann Benson
Tony Bergmann-Porter
Leslie Berkshire
Dean Born and Alan Bode
Larry and Virginia Bradford
Richard Brunning
John and Kristy Buck
Jan and Paula Buckner
Todd Burmeister
Richard (Rob) and Bonnie Carlson
Hal Chader
Sydna Cheever
Regina Chu and Jack Moore
Carol Clarke
Ogden and Jane Confer
Ray and Jo Connelly
Kay Constantine
Jeanne E. Corwin
Jack and Pat Davies
John and Arlene Dayton
Curtis Deering and Anne Holloran
John Diem and Janet Hughes
Dennis and Nickie Dillon
David Doty
Todd and Anne Dunivant
Jim and Helen Ehrlich
Mary Everett
Richard and Adele Evidon
Flo Francis
Shirley Frank
Lee Frelich
BJ French
Stephen Gangstead
Bess Gold
Homer and Elizabeth (Bette) Goldberg
Joe and Joan Hammel
John Haren and Gloria Perez
Kathleen Heaney
Arthur and Susan Hemmy
Doug and Grace Herr
Daniel and Susan Herring
Rodney Higgins and Jack Peltier
Janice Hunton and Betsy Peregoy
Harry and Lila Jacob

Carleton and Luann Johnson
David and Kristin Jones
Miriam Karmel
Mark and Tracy Karney
Jean Kennedy
Glenn and Kartra Kohl
Thomas and Michele Krenn
Mark and Michelle Krogh
Duane and Susan Kullberg
Bernie and Karen Kunkel
David and Betsy Larsen
Susan Lasoff
DeAnn Lavallo
Tom and Kate Law
Stefanie Ann Lenway and Tom Murtha
Debra Linder
Dori Macek
Donald and Judith Mackenzie
Nancy Maczka
Katherine Malaga and Ross Starkson
Judy Marcouiller and Don Garner
James and Sally Martineau
Laura Mattson
LaDonna Meinecke
David and Karen Miley
Koichiro Miyazaki
Tom Moore and Joan Growe
Judith Morgan
James Morrison and Kathleen Megarry
Joseph and Yvonne Mullen
Jim and Fran Mullin
David Munn and Linda Luksan
Melanie A Nelson
Ed and Deanna Newman
Chris Nichol and Matthew (Matt) Kiser
Jo Nichols
Glyn Northington
Barb Olson
Don and Florence Ostrom
Ronald G. Perrier
Sharon Plett
Gene and Pat Radecki
Dana and Wendy Reynolds III
Kenneth and Betsy Roering
Thomas and Gwynn Rosen
Robert Rundorff
Martin and Sylvia Sabo
Dick and Jan Sandberg
Ann Sargent

Claire Selkurt and Diane Legg
Gale Sharpe
William Snyder
Leif and Jeanne Solberg
John and Karen Somers
Arturo Steely
Timothy and Emily Stevens
William and Jerri Sudderth
Joe and Marcia Sullivan
Shane Swanson
Gordon and Faythe Thureen
Thomas Tinkham and Jacquelyn Hauser
Tom and Diana Ursin
John P. Van Heel
Wahlberg Ron
Paul and Hella Wartman
Patricia Weber
Jon and Sally Westby
Kim Williamson and Ron Claussen
Richard and Elizabeth Winga
Jane U. Young

Up to \$99

Nabihah Ahmed
Eric Anderson
Ellwood Anderson
Nettie Andrews
Anonymous
Micki Armstrong
Helen Atcas
Michelle Basham
Charles Baxter
Richard (Rick) and Nancy Beach
Deborah Becker
Beverley Benson
Margaret Berget
Regina Birchem
Keith Boe
Greg Boorsma and William Linmart
Larry and Susan Bourgerie
Karen Bowen
Robert and Betsy Bradford
David Braslau
Judith Breuer
Paul and Jane Brissett
Joel and Martha Brown
Madison Brown
Joan Brownell
Thomas and Patricia Bunch

Charles Cleveland
Eric and Alicia Cozine
Corey Dahlstrand
Elizabeth Davies
Don Davies
John Degner
Larry and Gay Dennison
Robert and Nancy Dickson
Colleen Dillon
Pete and Stephanie Dodge
Ann Douglas
Jerry Dudley
Katie Egli
Judy Ericksen
Hope Esparolini
Ester Fesler
Andrew Feyen
Joseph Fleischman
Dick and Carol Flynn
Michael and Maryfaith Fox
Cindy Frattallone
Lee Furman
Peter and Pali Gall
Gregory Gaul and Marsha Neff
Stephanie Geerdes
John and Janet Gendler
Curtis Gilmore
Mark and Sherri Ginther
Lois Goldberg
Anne Louis Gray and George Jacobsen
Jean and Bertram Greener
John and Carol Gretz
Robert and Judith Gross
John Haines
Jay and Madge Hanson
David and Marlys Harens
Betty Heffner
David and Verna Heidberg
Hope Hensley
Arthur Himmelman
Sylvia Horwitz
Sally Howard
Kathleen Humphries
Bridget Hust
Andrew Jellinger
Allan and Margaret Johnson
Dennis and Carol Johnson
Roger Johnson
Edward Jones and Blair Setterlund

Charmaine Jones
Bill and Suzanne Joyce
Patricia Kane
Judy Ann Karon
Alexander and Radmilla Klashnya
Thomas Korsman
Robert Koth
Duane and Mary Alyce Krohnke
Carol Ann and Ray Kroll
Trish Simo Kush and Patrick Kush
La Vonne Landsverk
Caroline Lappin
Alan Larson
Diane Lawrence
Bill and Gloria Levin
Bud Levin and Sheila Field
Archibald and Edith Leyasmeyer
Kelvin Lim
Jim and Lila Little
Greer and Mary Lou Lockhart
Marjorie Loeffler
Mike Maher
George and Maria Malone
Judy Marco and Don Garner
Bob and Wanda McCaa
Kathryn McConnell and Sue Jones
Rosemarie McDonald
Mary McQuire
David Melberg and Christine Ternand
David Mertesdorf
John Meyers
Robert and Suzanne Meyerson
Nancy Miller
Don Moberg
Val Moeller
Mark and Pamela Moret
Gerald and Margaret Mullin
John and Anne Munholland
Dennis and Susan Nielsen
Hugh and Susan Nierengarten
Laura Noble
Dallas and Patricia Nortwen
Andrew Odlyzko
Glenn and Carole Mae Olson
Reino Paaso and Connie Nowaki
Andreas and Susan Papanicolaou
John and Carole Peterson
Martha J. Rasmussen
Ruth Redhead

John Reger
Fred and Lois Freeberg Requa
Peter and Mary Ritten
Jennifer and Sam Rosenbaum
Irving and Janet Shapiro
Merle Shapiro
Nancy Slaughter
Teresa Snell
Donald Sommers
Eric and Madeleine Sorenson
Ellen Sovik
Zika and Marcia Srejovic
Ray and Janet Sterling
Jerry and Sandy Svec
Tom and Helen Swedien

Condominium Association Gifts

1200 on the Mall Association
Greenway Gables Association
Loring Green East Association
Loring Green West Association
Loring Way Condominiums
The Tower of 1200 on the Mall Association
(1225 Lasalle)

In Memorial

Jon and Jean Albrightson
Winnie Anderson
Ray and Jo Connelly
David Doty
Ann Douglas
Richard and Adele Evidon
Suzanne Joyce
Judy Ann Karon
Trish Simo Kush and Patrick Kush
Katherine Malaga and Ross Starkson
Katherine Malaga and Ross Starkson
Bob and Wanda McCaa
David Mertesdorf
Barb Olson
Andreas and Susan Papanicolaou
Gene and Pat Radecki
Lois Freeberg Requa
William Snyder
John and Marcia Stout
William and Jerri Sudderth
Gordon and Faythe Thureen

Mons and Shirley Teig
Glenn and Lois Tonneslan
Richard Tow
Richard Wall
Kurt and Marsha Weidenhammer
Jim and Kathryn Welbourn
Richard and Carole Wiederhorn
Robert and Judy Wilhelm
Scott Wilkins
Ivan and Virginia Wilson
John Wodele and Susan Gaertner
Philip Woods
John Yuccas and Ananta Bargdaval
John and Mary Zesbaugh

Area Businesses and Organizations

Fine Associates, LLC
First Service Residential Company
J.J. Leasing
The Hyatt Regency-Minneapolis

In Memory of Herbert Cheever
In Memory of Herb Cheever
In Memory of Herbert Cheever
In Memory of Mary Doty
In Memory of Ashley
In Memory of Herbert Cheever
In Memory of Bill Joyce
In Memory of Herbert Cheever and Pearl Cole
In Memory of Herbert Cheever
In Memory of Herbert Cheever
In Memory of Renzo Malaga
In Memory of Martin Sabo
In Memory of Herbert Cheever
In Memory of Victor
In Memory of Louise Thomas
In Memory of Martin Sabo
In Memory of Fred Requa
In Memory of Mary Patricia Snyder
In Memory of Carter Fairfield
In Memory of Herb Cheever
In Memory of Iggy and Lizzie

In Honor

Mike Addy
Kathleen Heaney
LaDonna Meinecke

In Honor of Ray Harris
In Honor of Riley Edmunds
In Honor of Richard Anderson

Gifts In Kind

The Ackenberg Group
Jan and Paula Buckner
The Hyatt Regency-Minneapolis
Peggy MacRae
The Target Corporation