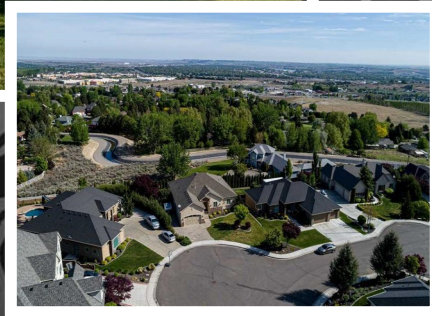
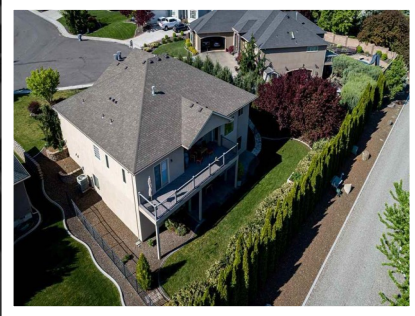


Opulent Rambler with Daylight Basement



OFFERED AT
\$729,900



**1187 Plateau Drive
Richland, WA**
MLS # 245005
5 Bed/ 4 Bath
4,842SF
.25 Acre Lot



This luxurious Rambler with daylight basement is nestled on the bottom of Badger Mountain, in a cul-de-sac, privately surrounded neighborhood. When arriving you are instantly captivated with the quality of the landscaping and builder craftsmanship. Upon entering the home you are kissed with natural light radiating through the spacious open floor plan. Hard wood floors through out the common areas of the upper level. The fireplace is complimented with custom built-in shelves, cabinets, and surround sound. The kitchen features granite slab counter, island with range and breakfast nook. Custom hardwood cabinets with crown molding, large pantry, endless custom features you must see. The large windows along north side of home give you impeccable views of South Richland, as you walk onto the deck you are given privacy from the mature landscaping. Master bedroom features private entry onto open deck, wool carpet, large garden tub, large dual head shower, Jack and Jill Vanities, spacious custom walk in closet. Second bedroom on the main floor features an ensuite. The main level features an office with built in custom shelving, can also be made into a 5th bedroom. Lower level has gradual stairs down to the large Rumpus room with wet bar for entertaining. Large 2 bedrooms, with double closet space. Large workout or bonus room, large custom work shop area. Lower level leads into the backyard and covered patio area. Garage features a tandem 3 car garage. Pride in ownership is seen through out this home. Come see the charismatic appeal this home has to offer.

Schedule an appointment for your private showing today.



Direct or Text: **(509) 440-0090**

website: www.AsYouWishHouses.com
email: KristineConnolly@AsYouWishHouses.com

I make it all about YOU!

KRISTINE CONNOLLY
REALTOR®/BROKER

