



Transforming Visions Into Archival Art

Canvasses by William Domb



Discover the absorbing flowing acrylic creations of Canvasses by William Domb. The artist brings a keen eye for motion, color and detail into vision as archival creations crafting vibrant, one-of-a-kind works that tantalize the mind as well as the eye. Some are striking. Some disturbing. Some are uplifting and full of joy. Works run from playful to somber, striking to stark, evoking the gamut of human emotion. Domb's current work is mostly non-representational expressive abstraction.

All canvasses are one-of-a-kind, hand painted individuals and not prints or reproductions. Many now grace households and businesses across the US: California (a number), Florida (a number), Phoenix, New York, Chicago, N. Carolina, Texas, Minnesota, and outside the US. Unique creations make smart long-term investments and wonderfully received gifts, particularly personalized commissions.

Aged canvases are dried under humidity control, permanently sealed on backs as well as fronts, coated, then enclosed in a UV suppressing layer followed by mirror epoxy resin ready for immediate hanging. Most are framed in modern sample of framing constructions. Commissions can be ordered unframed. Note that many “canvasses” are actually realized on even more archivally stable cradled birch panel.

- Most canvasses are highly detailed and complex demanding longer, thoughtful contemplation and study.
- Connect with us to discuss specific unique commissions fitting your unique display space. Completion times on the order of eight weeks.
- Productive viewing: step back four to six feet for an overall view, then get close and inspect the works in six inch segments to study complex detail.

All rights reserved; images may not be reproduced without written permission from the artist. Shipping additional. Visit canvassesbywilliamdomb.com (QR code above) 909-292-7515

Tempranillo

\$550.00 20 x 24 archival acrylic vibrant sunset shades.

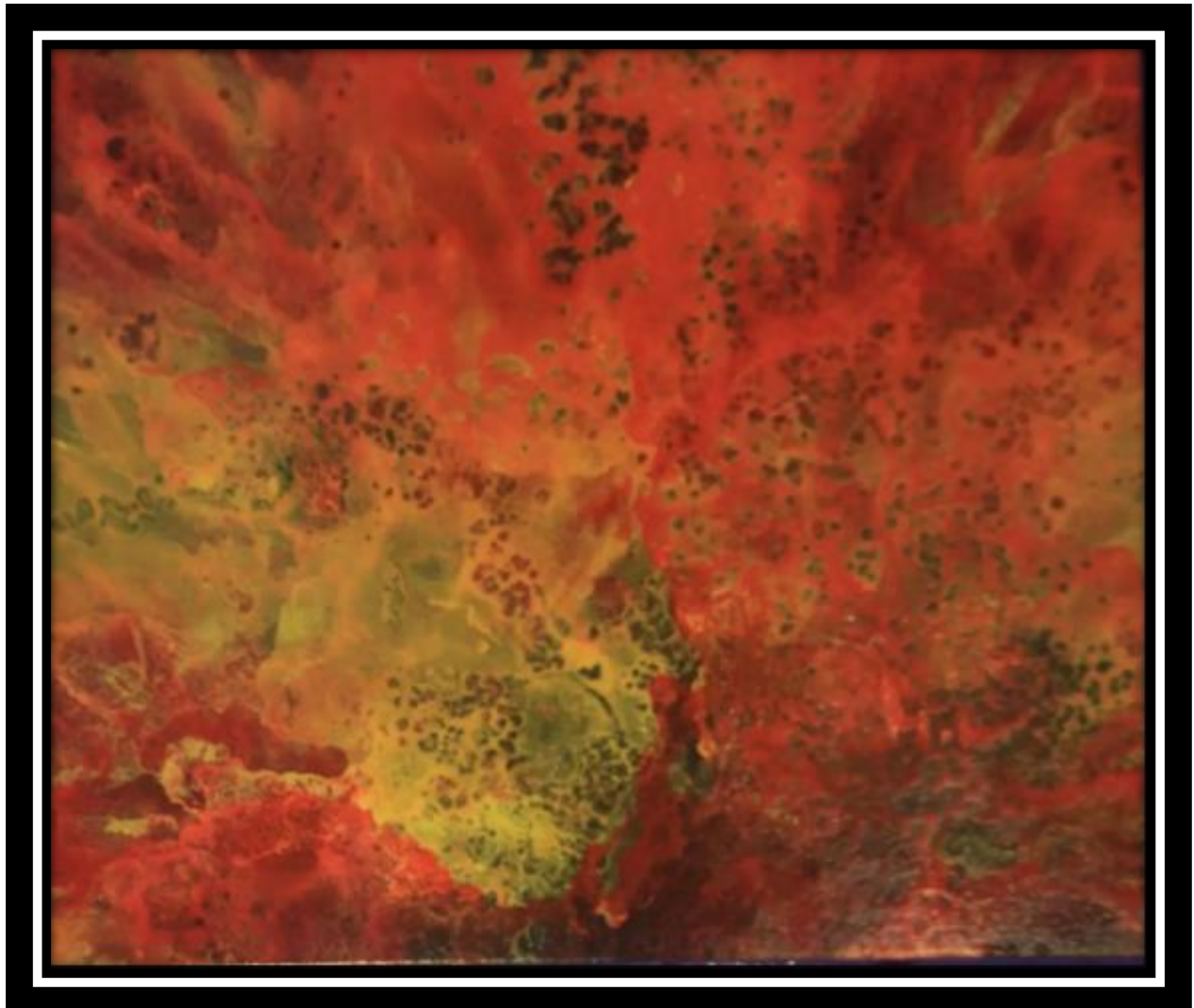
Professionally mounted in a modern floater frame. See Trek to Aureus Lake for a sample of framing.



Moroccan Desert

\$800.00 Privately placed, Florida. 20 x 24 archival acrylic.
Scintillating, dramatic, warm reds and golds.

Professionally mounted in a modern floater frame. See Trek to Aureus Lake for a sample of framing.



Wicked Moloch

\$850.00 20 x 24 archival acrylic
Hot reds contrasting with cooler blues and a dark undertone.

Professionally mounted in a modern floater frame. See Trek to Aureus Lake for a sample of framing.



Minotaur's Sail

\$550.00 20 x 24 archival acrylic

Golds, swirling blues In private placement, Florida.
Pairs well with Homonym.

Professionally mounted in a modern floater frame.
See Trek to Aureus Lake for a sample of framing.

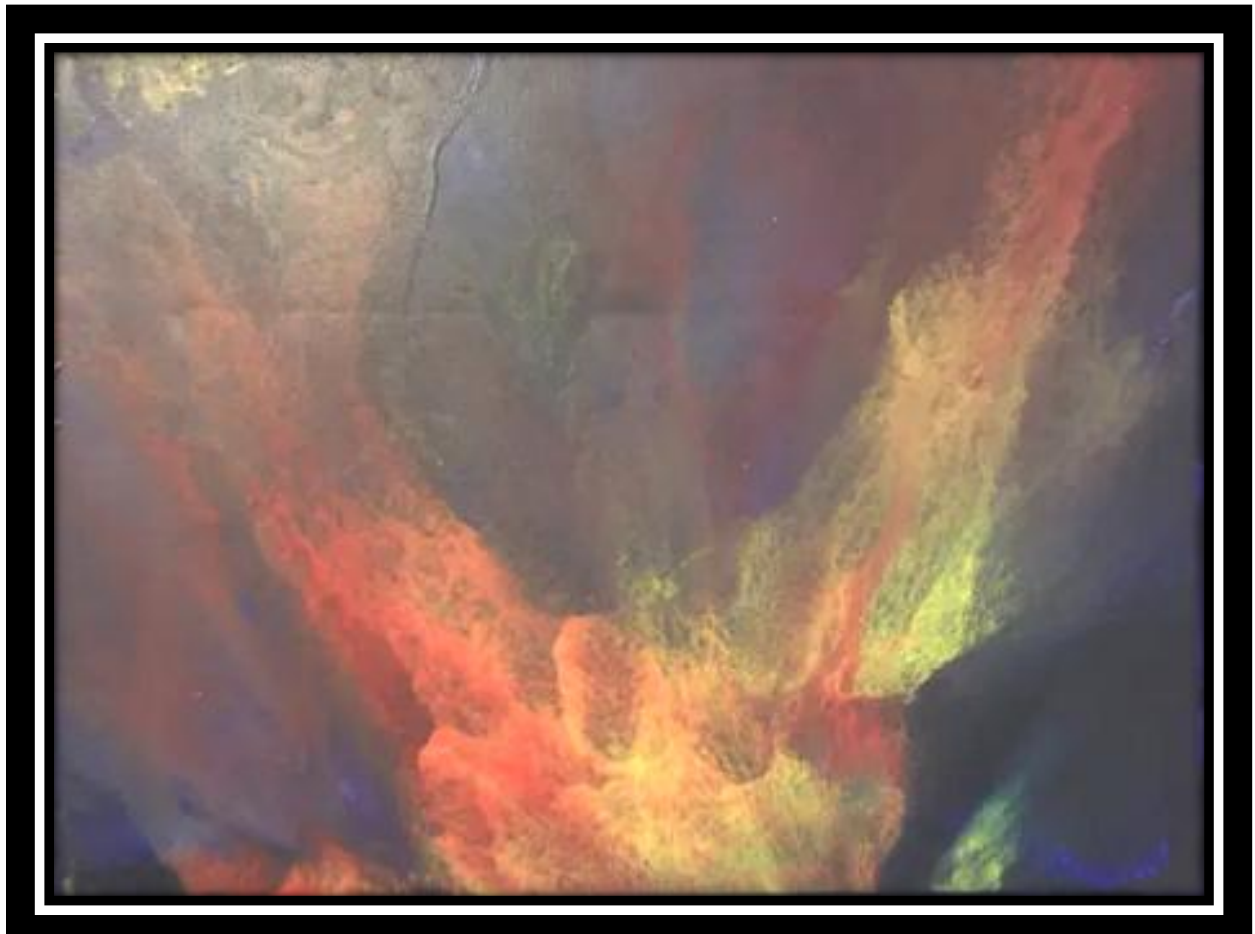


Fledermaus

\$850.00 Privately placed, North Carolina. No longer available.
18 x 24 archival acrylic

Ecstatic movement of flight in dark, dramatic blues and golds

Professionally mounted in a modern floater frame. See Trek to Aureus Lake for a sample of framing.



Echo of Lightning

\$950.00 18 x 24 archival acrylic

Private collection, Jupiter, Florida; no longer available.

Vibrant movement, electric color, vibrant, dominant blues and reds.

**Professionally mounted in a modern floater frame.
See Trek to Aureus Lake for a sample of framing.**



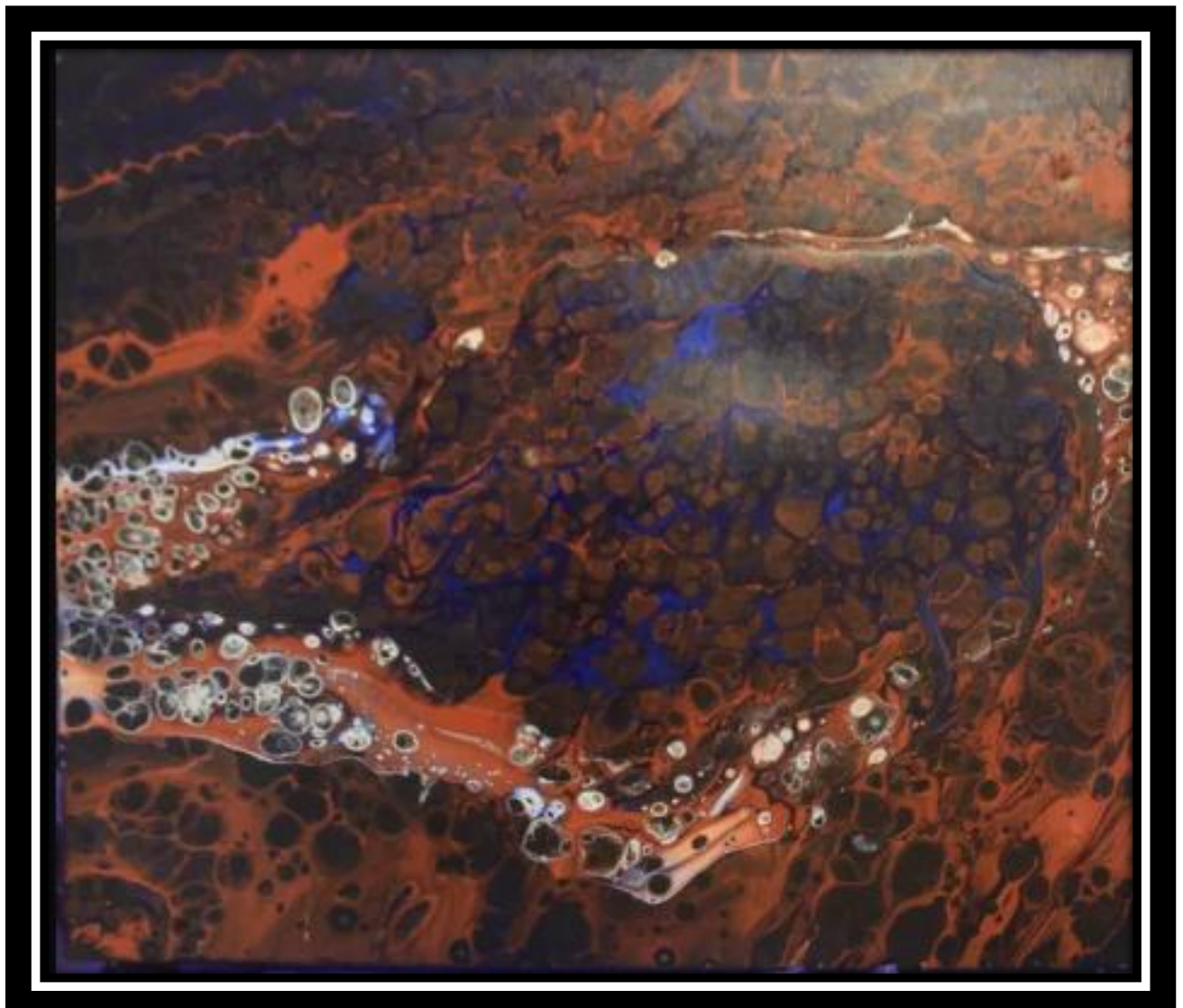
Fortuitous

\$850.00 20 x 24 archival acrylic

In private placement Arts District, West Palm Beach, Florida.

Great vibrancy and movement ; ambers and blues; complex, fine detail calling for attentive close study.

Professionally mounted in a modern floater frame.
See Trek to Aureus Lake for a sample of framing.



Homecoming

\$550.00 18 x 24 archival acrylic

Subtle golds, grays, a hint of blue in calm warmth.

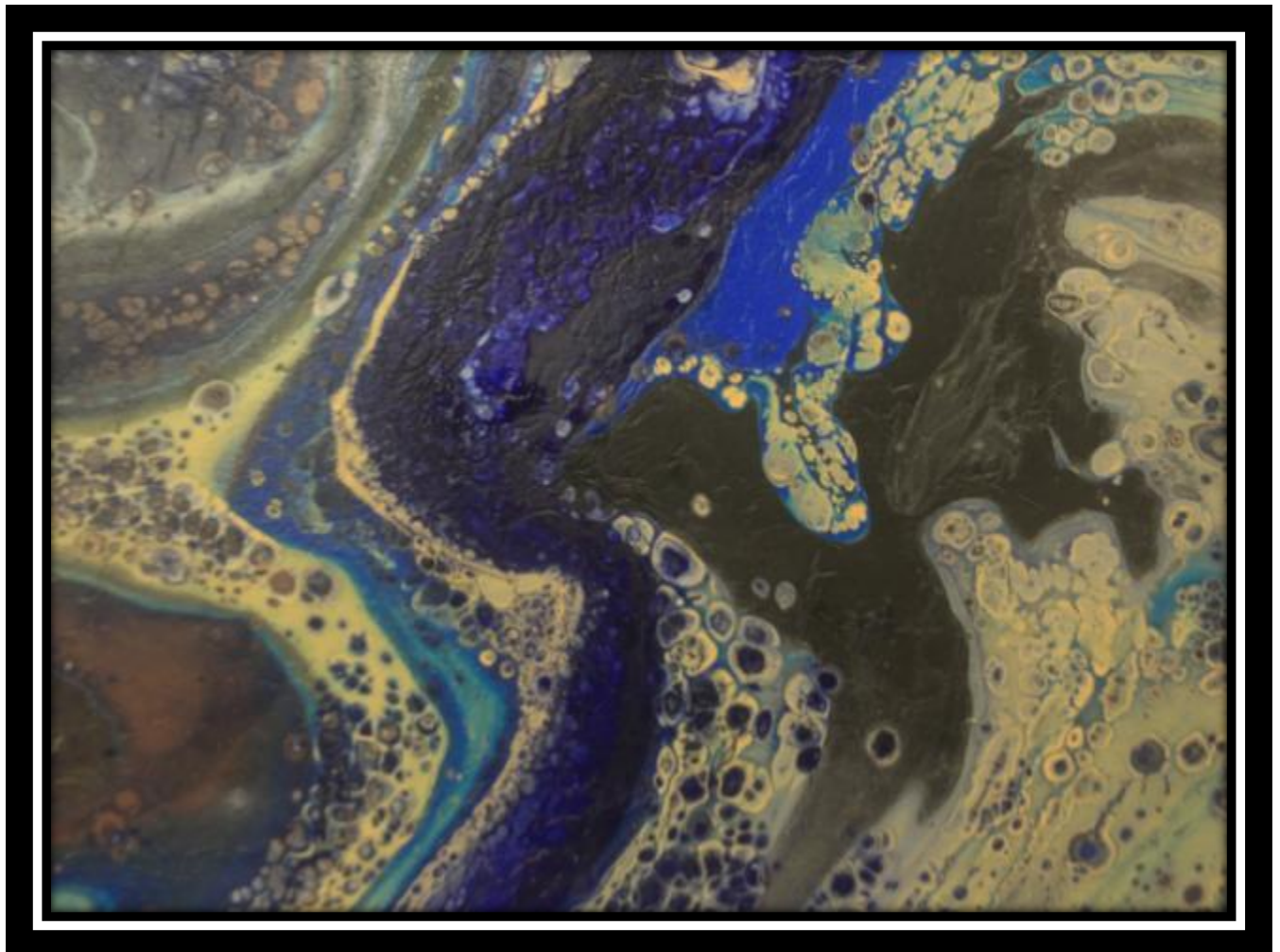
Professionally mounted in a modern floater frame.
See Trek to Aureus Lake for a sample of framing.



Ecstatic Chimera

\$900.00 18 x 24 archival flow acrylic with exciting complex fine detail; blue and golds. In private placement, Jupiter, Florida. No longer available.

Professionally mounted in a modern floater frame. See Trek to Aureus Lake for a sample of framing.



Moorish Idyll in Bronze

\$750.00 18 x 24 archival acrylic

Dune-like organic browns, tans; strong impasto effects. Flowing metallics.

Professionally mounted in a modern floater frame. Shown framed and resin glazed.



Moriah

\$800 18 x 24 archival acrylic. Private placement, California.
No longer available.

Wind and storm inspired; tempestuous.

Professionally mounted in a modern floater frame. See Trek to Aureus Lake for a sample of framing.

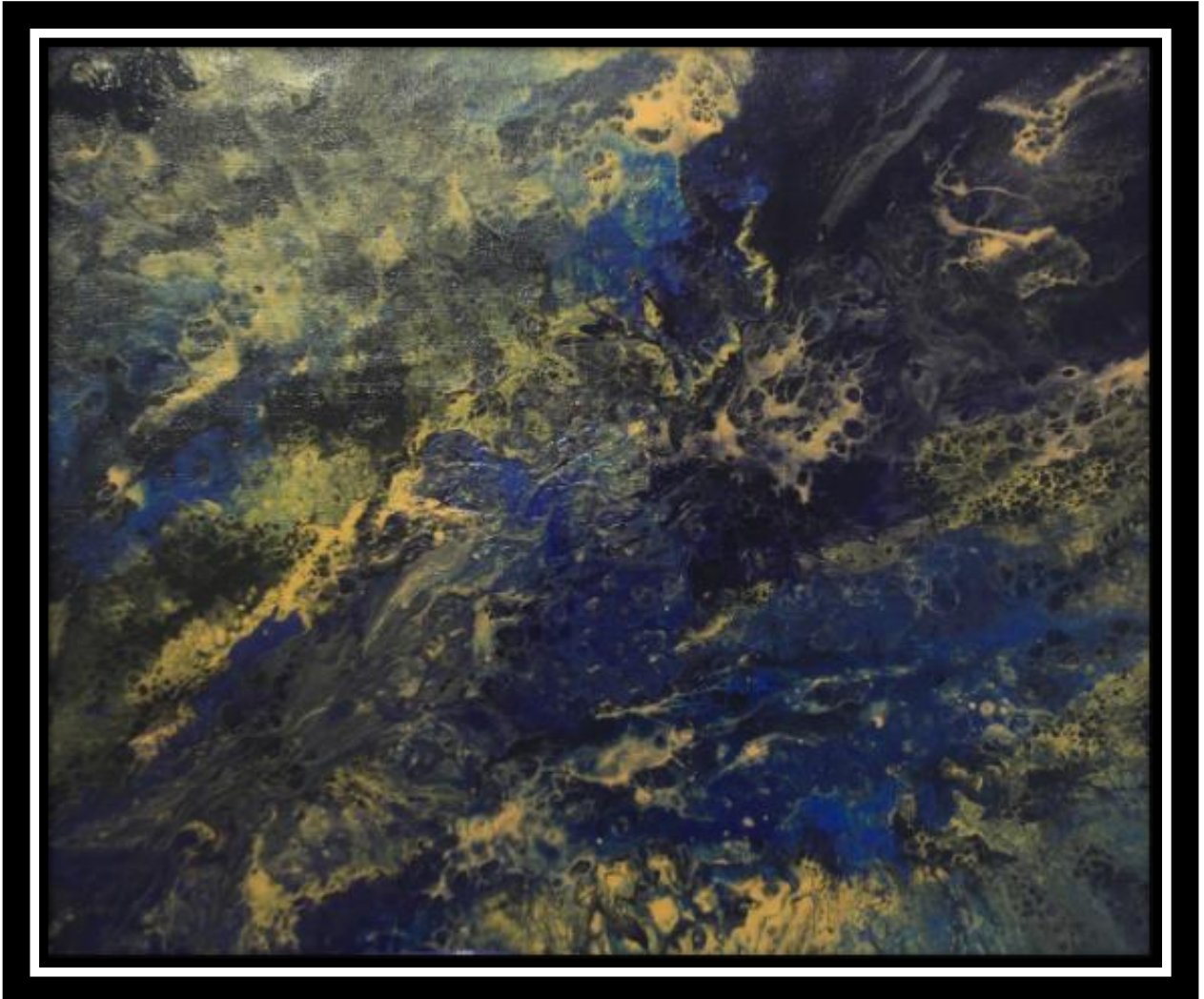


Undertow

850.00 Privately placed, Florida No longer available.

20 x 24 archival acrylic movement of golds and blues.

Professionally mounted in a modern floater frame.
See Trek to Aureus Lake for a sample of framing.

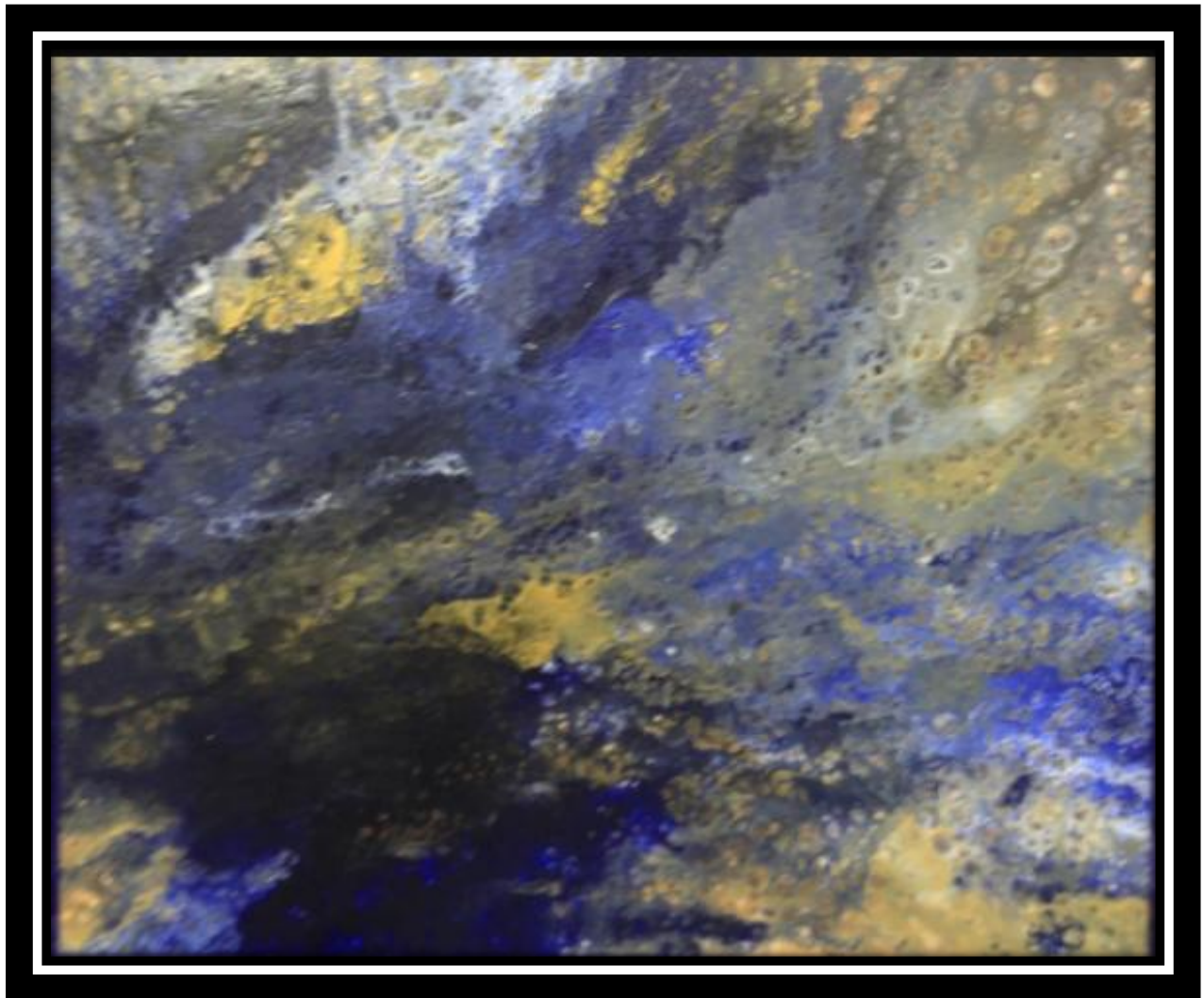


Homonym

\$750.00 20 x 24 archival acrylic

Ephemeral scintillating blues and golds with a serious darker base; pairs well with Minotaur's Sail.

Professionally mounted in a modern floater frame.
See Trek to Aureus Lake for a sample of framing.



Turkmenistan

\$750.00 20 x 24 archival acrylic

motive golds and sand with subtle detail

Professionally mounted in a modern floater frame. See Trek to Aureus Lake for a sample of framing.



Schism

\$950.00 24 x 30 acrylic

A vibrant and dynamic abstract flow art painting with a mix of bold colors and intricate patterns.; reds, blues, golds.

Professionally mounted in a modern floater frame.
See Trek to Aureus Lake for a sample of framing.

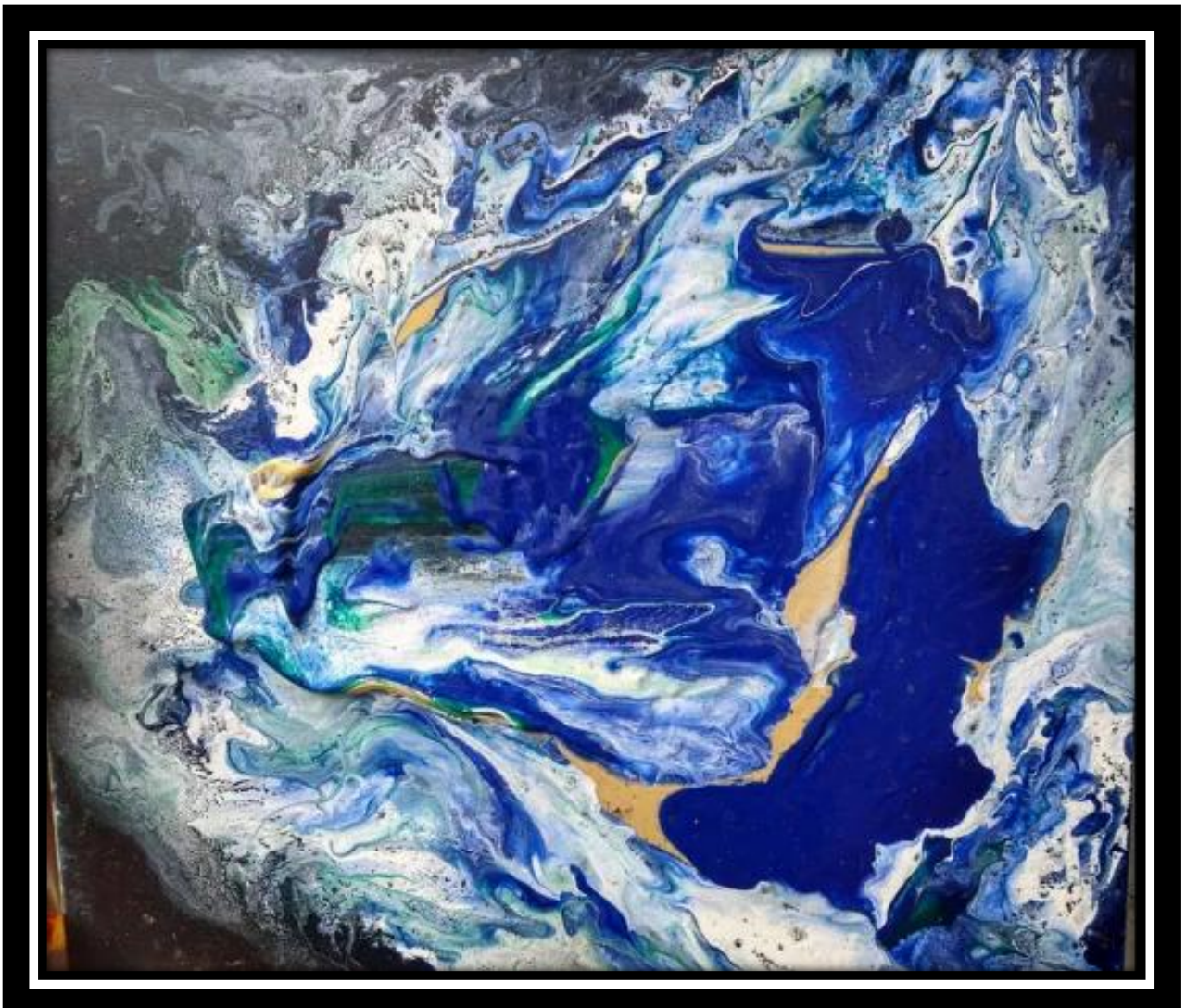


Mediterranean

\$850.00 Privately placed, Texas. No longer available.

20 x 20 Acrylic with strong, complementary blues and white swirls.

**Professionally mounted in a modern floater frame.
See Trek to Aureus Lake for a sample of framing.**

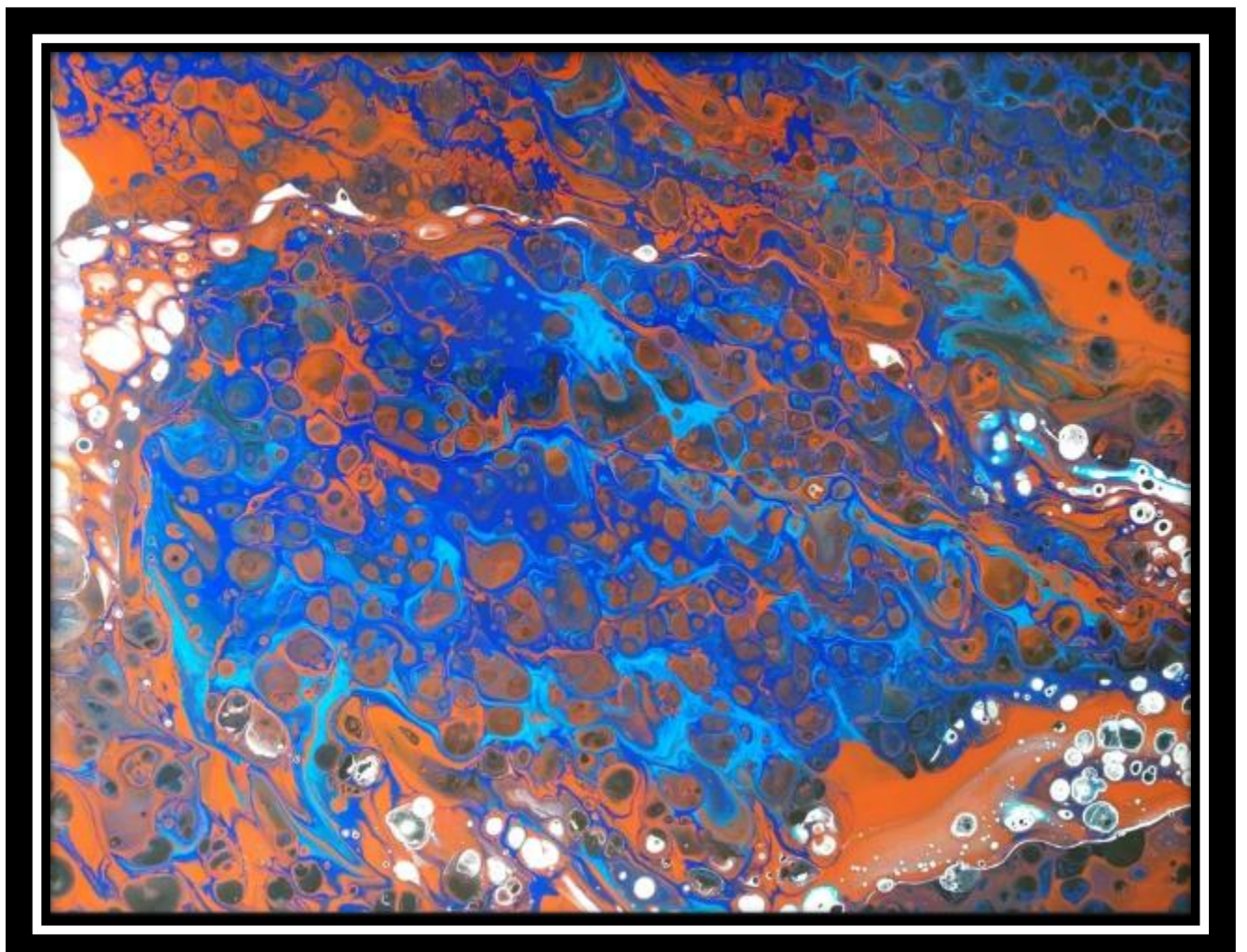


Nebulous

\$650.00 Private placement, New York. No longer available.

A vibrant abstract fluid art painting with a mix of blue, orange, and white

Professionally mounted in a modern floater frame.
See Trek to Aureus Lake for a sample of framing.



Quadrature B

\$450.00 Four complementary 8 x 10 archival acrylics as an unusual set mounted 30 v 34.

Featuring bold golds.

All four professionally mounted in a single modern floater frame. See Trek to Aureus Lake for a sample of framing.



Ocean Foam

\$950 30 x 30 archival acrylic

Privately placed commission, California; no longer available

A beautiful abstract with blues, tans, and white. Complex, moving detail. Cousin of Ocean Foam Rondo.

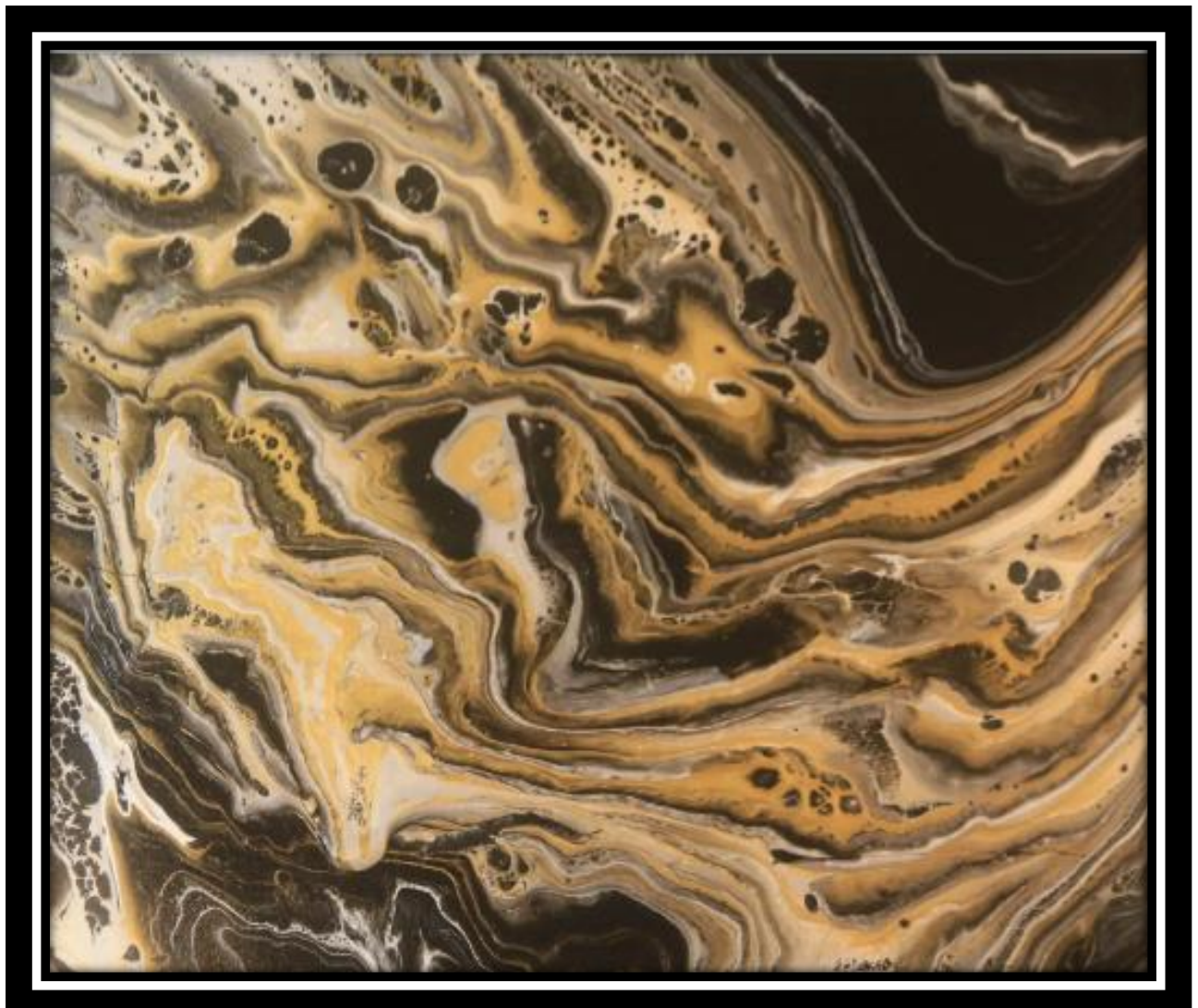


Waveform II

\$750.00 20 x 24 dramatic archival flow acrylic. In private placement, St. Augustine, Florida; no longer available.

Bold blacks, golds and tans; pairs with the larger cousin, Waveform I.

Professionally mounted in a modern floater frame. See Trek to Aureus Lake for a sample of framing.

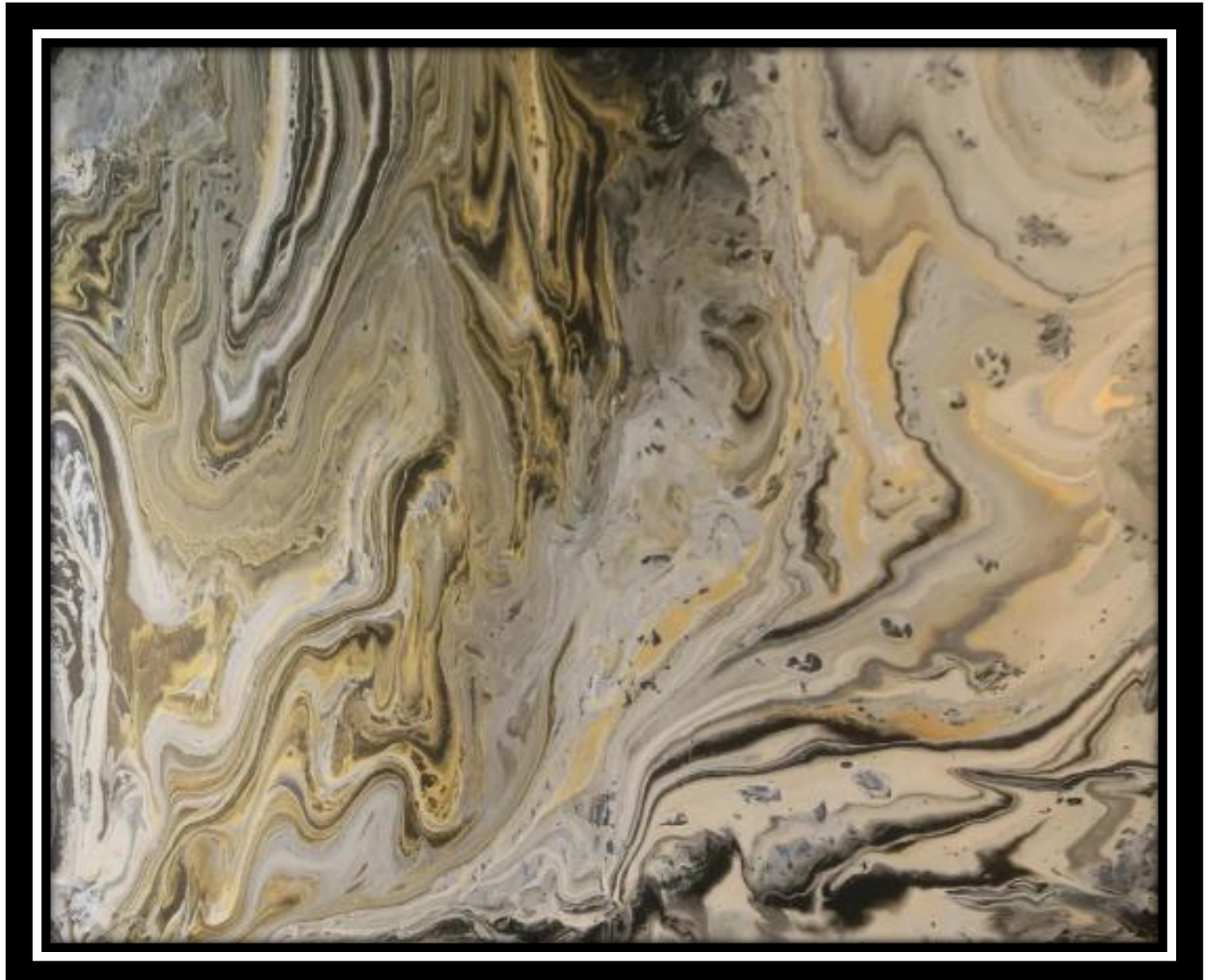


Waveform I

\$850.00 24 x 30 archival acrylic

Dramatic archival acrylic with swooshes of blacks and golds; pairs with its cousin Waveform II. Somewhat cooler tone.

Professionally mounted in a modern floater frame.
See Trek to Aureus Lake for a sample of framing.



Expansive

\$750.00 16 x 20 archival flow acrylic

Swirling golds, tans and deep maroon highlights with subtle shading and detail.

Professionally mounted in a modern floater frame.
See Trek to Aureus Lake for a sample of framing.



Mephisto's Inferno

\$500.00 20 x 24 archival flow acrylic On hardback canvas.

Vibrant deep reds with unusual subtle detail.

Professionally mounted in a modern floater frame.
See Trek to Aureus Lake for a sample of framing.

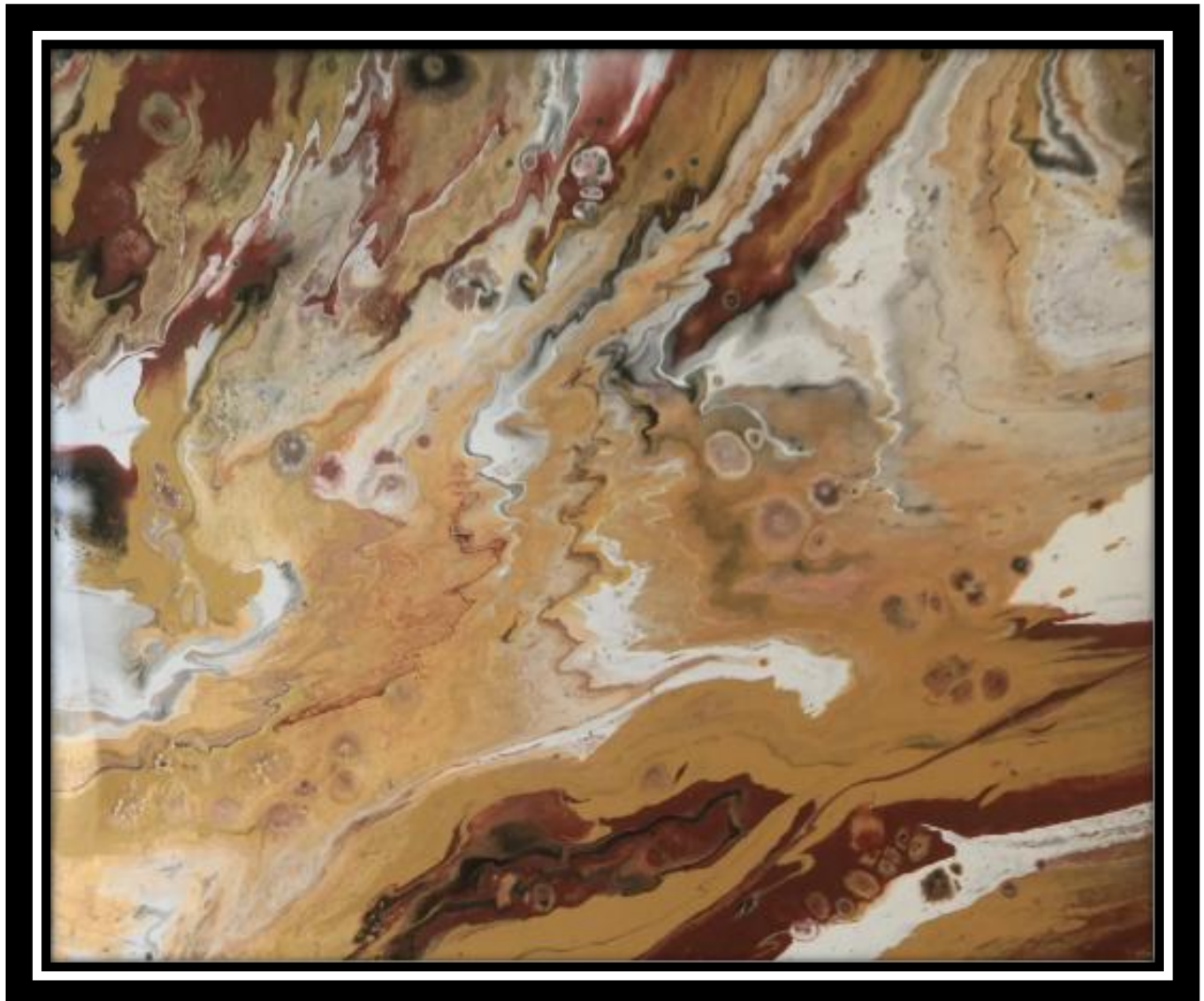


Marbled Golds

\$750.00 20 x 24 archival flow acrylic

Variegated golds, organic desert tans and browns.

Professionally mounted in a modern floater frame.
See Trek to Aureus Lake for a sample of framing.



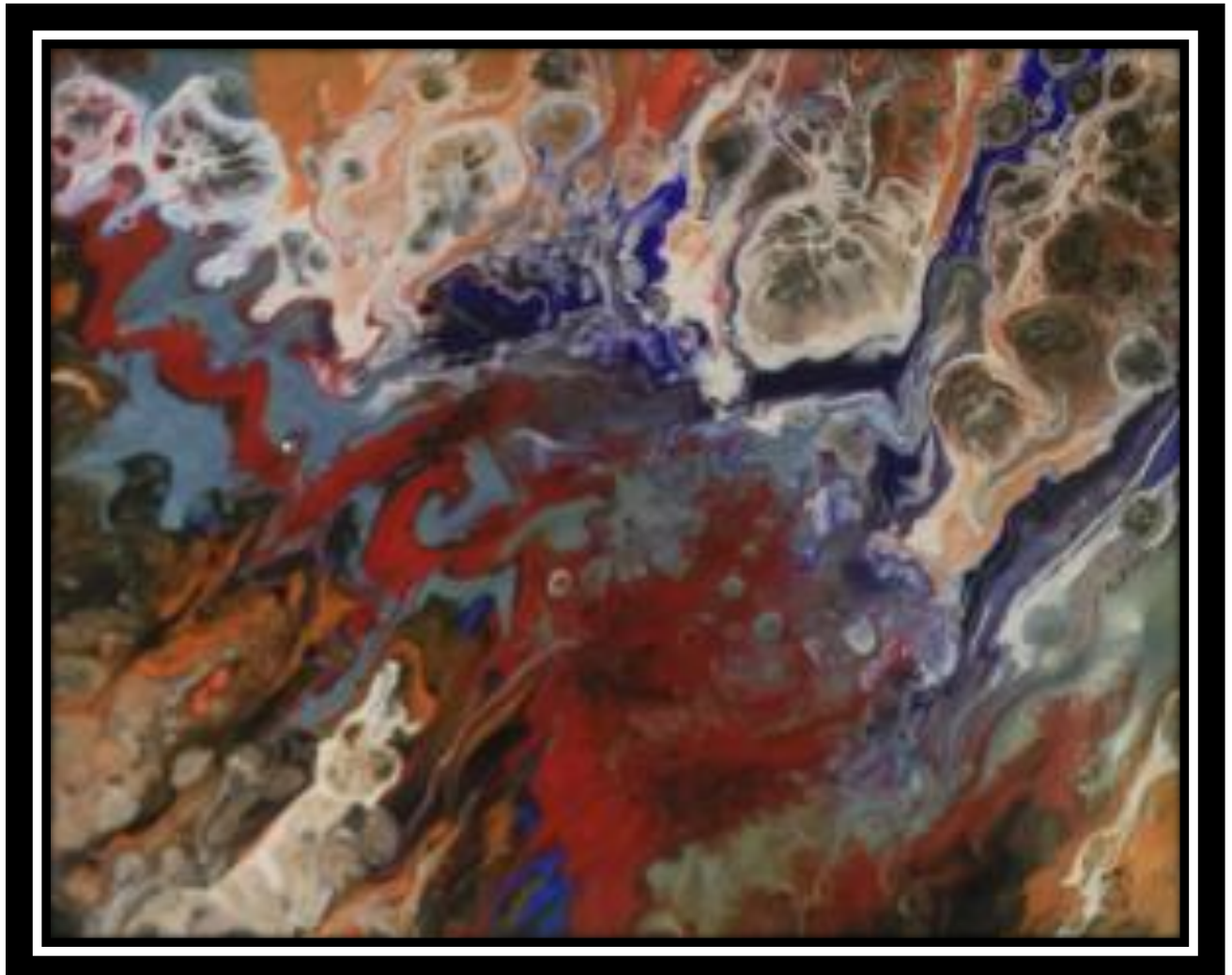
Danse Macabre II

\$850.00 18 x 24 archival flow acrylic.

Bold and assertive reds, blues and whites with great movement, and a heavy central impasto area.

Pairs with two other canvasses, Danse Macabre I and III

**Professionally mounted in a modern floater frame.
See Trek to Aureus Lake for a sample of framing.**



Danse Macabre I

\$950.00 24 x 30 archival flow acrylic

Bold and assertive reds, blues and whites with intense, vibrant movement and complex fine detail.

Pairs with two other canvasses, Danse Macabre II and III

Professionally mounted in a modern floater frame. See Trek to Aureus Lake for a sample of framing.



Danse Macabre III

\$750.00 16 x 20 archival flow acrylic.

Pairs with two other canvasses, Danse Macabre I and II Bold and assertive reds, blues and white with great movement but more subtle and contemplative than I and II. Considerable dense, fine detail.

Professionally mounted in a modern floater frame. See Trek to Aureus Lake for a sample of framing.



Shore Break

\$550.00 20 x 24 archival flow acrylic Hard-back sealed canvas.

Evocative of the ocean's edge but hinting of details below. Blues and whites.

Professionally mounted in modern floater frame. See Trek to Aureus Lake for framing example.



Behind the Eye

\$850 Private placement, Florida. No longer available.

24 x 30 archival flow acrylic in subtle, dark colorations of blues and reds; more somber, brooding and pensive.

Professionally mounted in modern floater frame. See Trek to Aureus Lake for framing example.

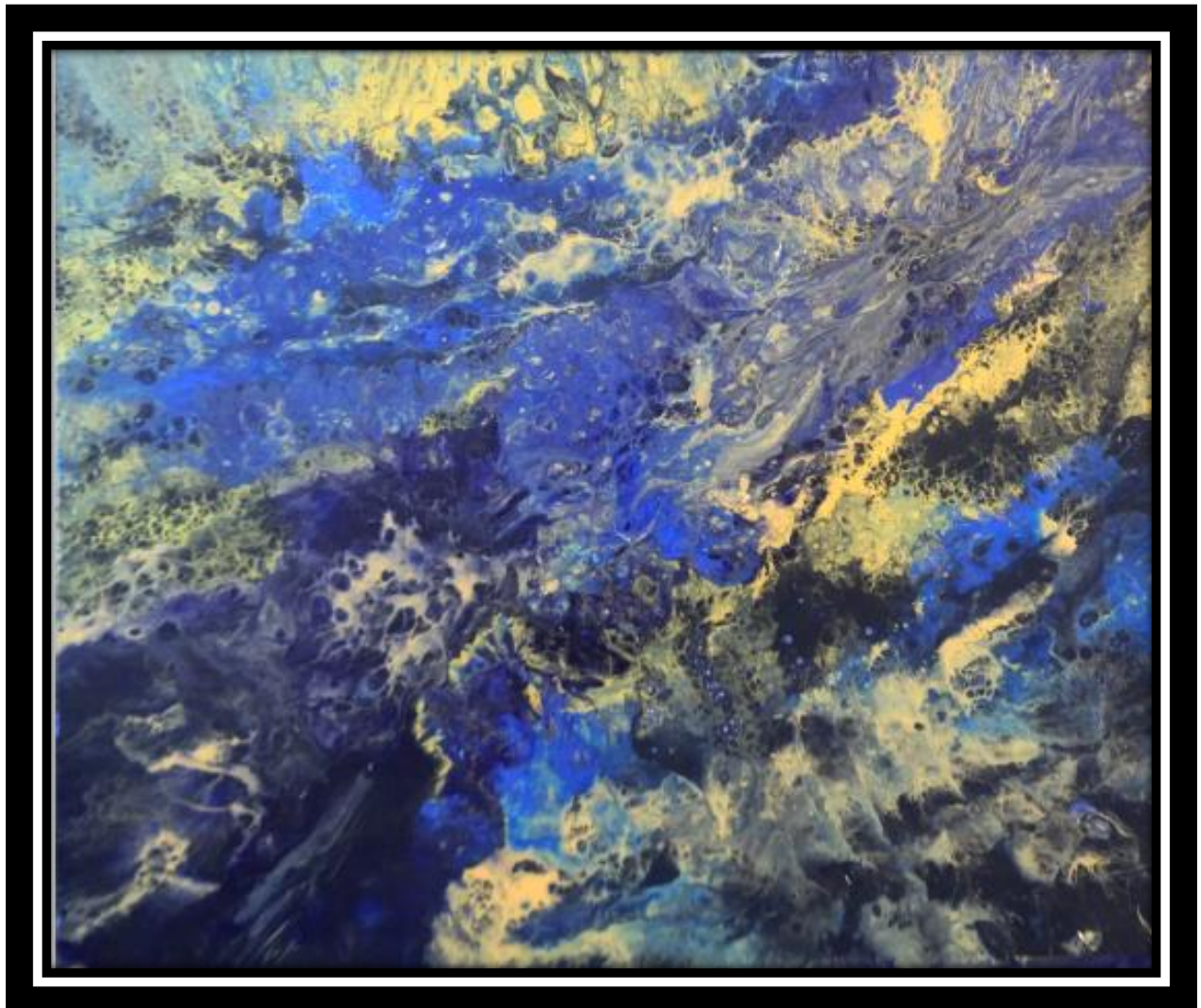


Gold Clouds

\$750.00 20 x 24 Archival flow acrylic

Strong, active golds and blues; a sense of turbulent movement and ferment.

Professionally mounted in a modern floater frame. See Trek to Aureus Lake for a sample of framing.

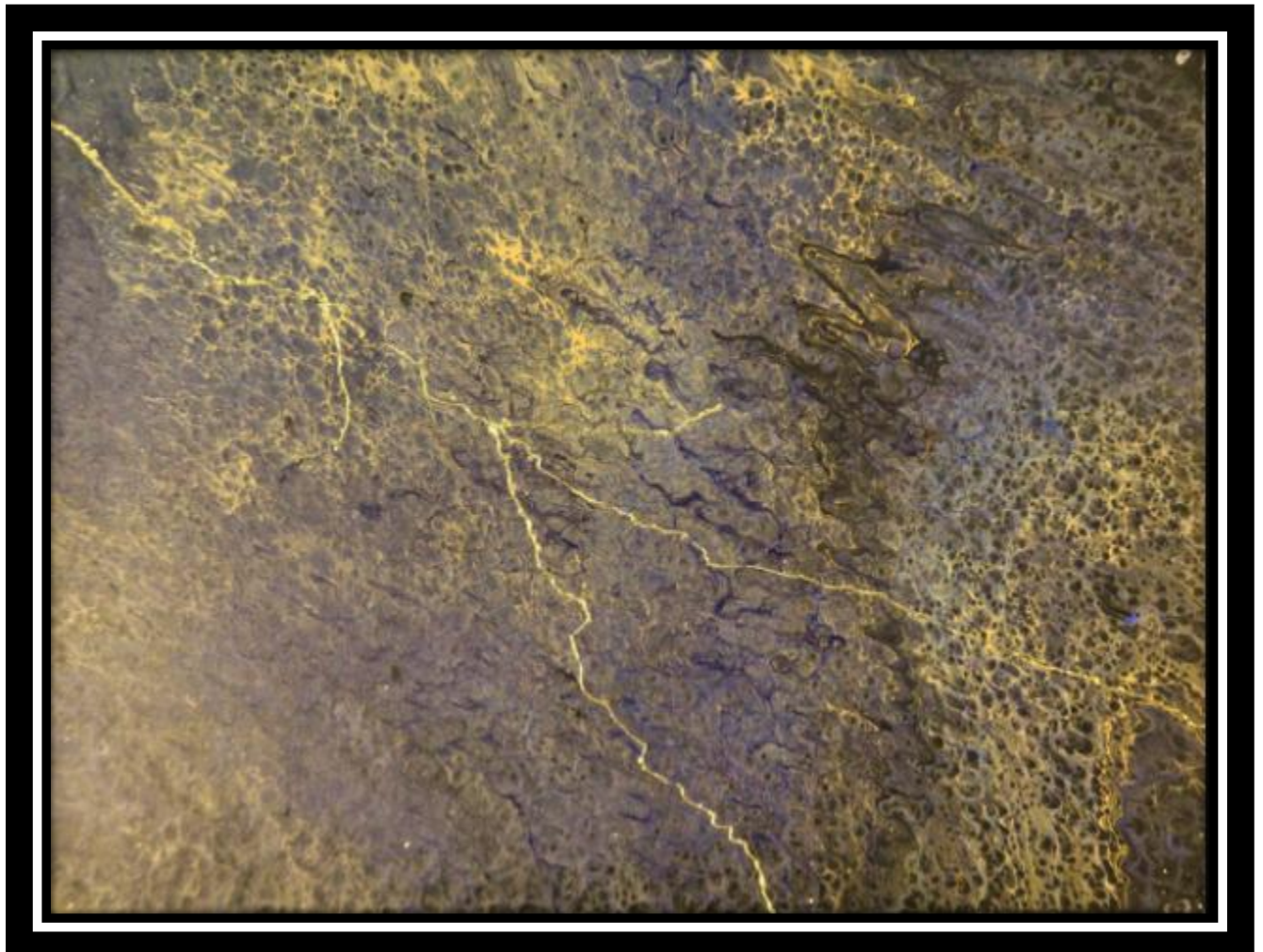


Electric Discharge in Gold

\$800.00 20 x 24 Archival Flow acrylic

Vibrant gold on deep blue. Strong lighting recommended.
Lightning bolt in 24 karat gold.

Professionally mounted in a modern floater frame.
See Trek to Aureus Lake for a sample of framing.



Volcanic Flow

\$550.00 18 x 20 archival flow acrylic

Heavy impasto with organic browns and greens and dense detail.

Professionally mounted in a modern floater frame.
See Trek to Aureus Lake for a sample of framing.



Ocean Foam Rondo

\$650.00 24" round archival flow acrylic

Commission in private placement, California.

Active ocean colors in blues with sand accents.

Unframed, ready for hanging.



Tidepool Reflection

\$550.00 20 x 24 Archival acrylic

Turbulent golds and blues; contemplative and demands good lighting; sealed hard-back canvas.

Professionally mounted in modern floater frame. See Trek to Aureus Lake for framing example.

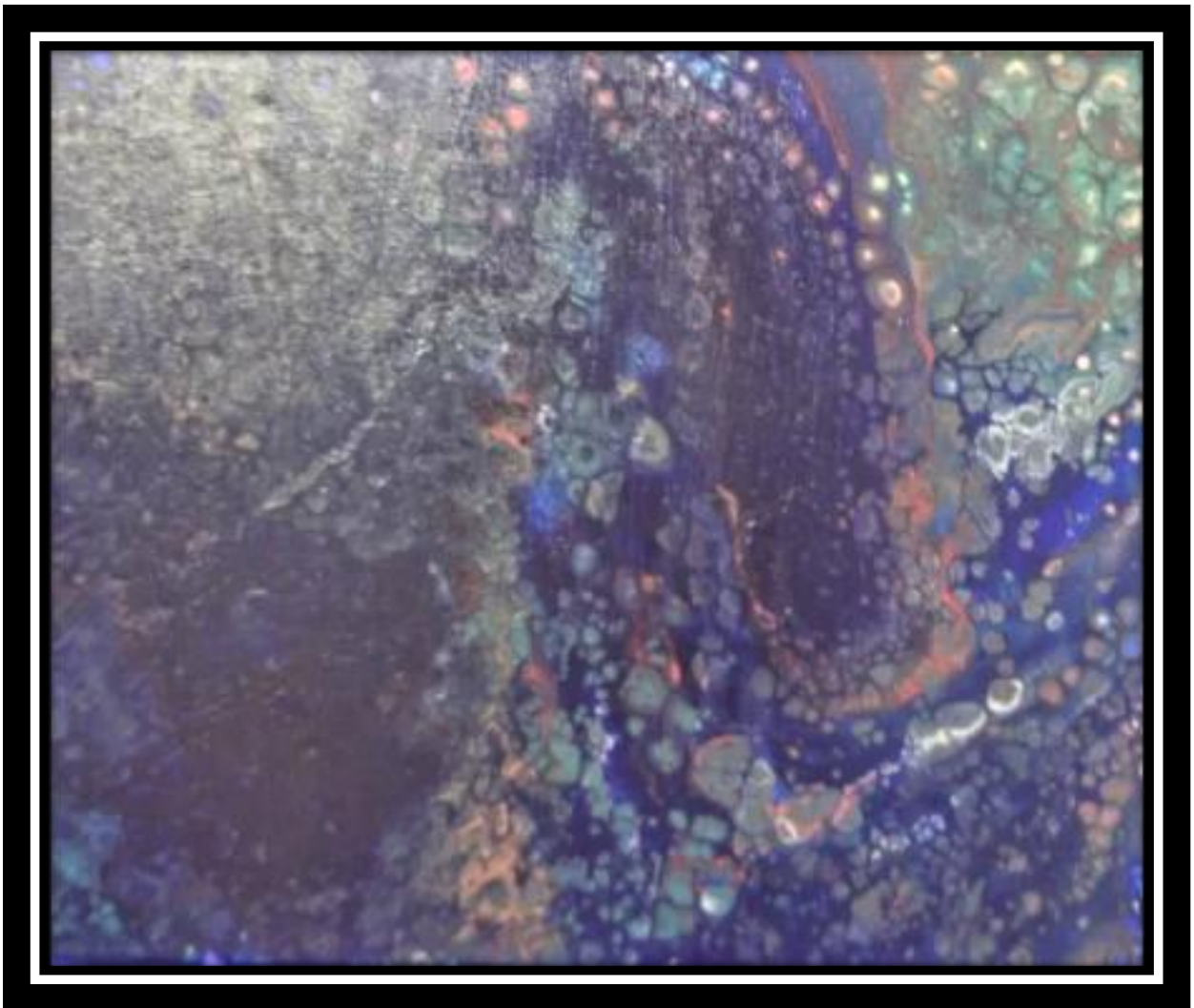


Kaleidoscope Bubbles

\$550.00 Archival flow acrylic 20 x 24
No longer available. Private placement, Florida.

dark blues and subtle bubble colors; somewhat somber calling for strong lighting.

Professionally mounted in a modern floater frame.
See Trek to Aureus Lake for a sample of framing.



Firebird Flight

\$750.00 20 x 24 archival acrylic

Burning and moving delicate pinks and whites with considerable fine detail toward periphery.

Professionally mounted in a modern floater frame.
See Trek to Aureus Lake for a sample of framing.



Ravel's Bolero

\$750.00 20 x 24 archival acrylic

Sizzling blues and greens in joyful explosive movement.

Professionally mounted in a modern floater frame.
See Trek to Aureus Lake for a sample of framing.



Mid-Ocean

**\$850.00 Archival Acrylic 24 x 30 Private placement, Texas.
No longer available.**

Deep, rolling blues, white foam.

**Professionally mounted in a modern floater frame.
See Trek to Aureus Lake for a sample of framing.**

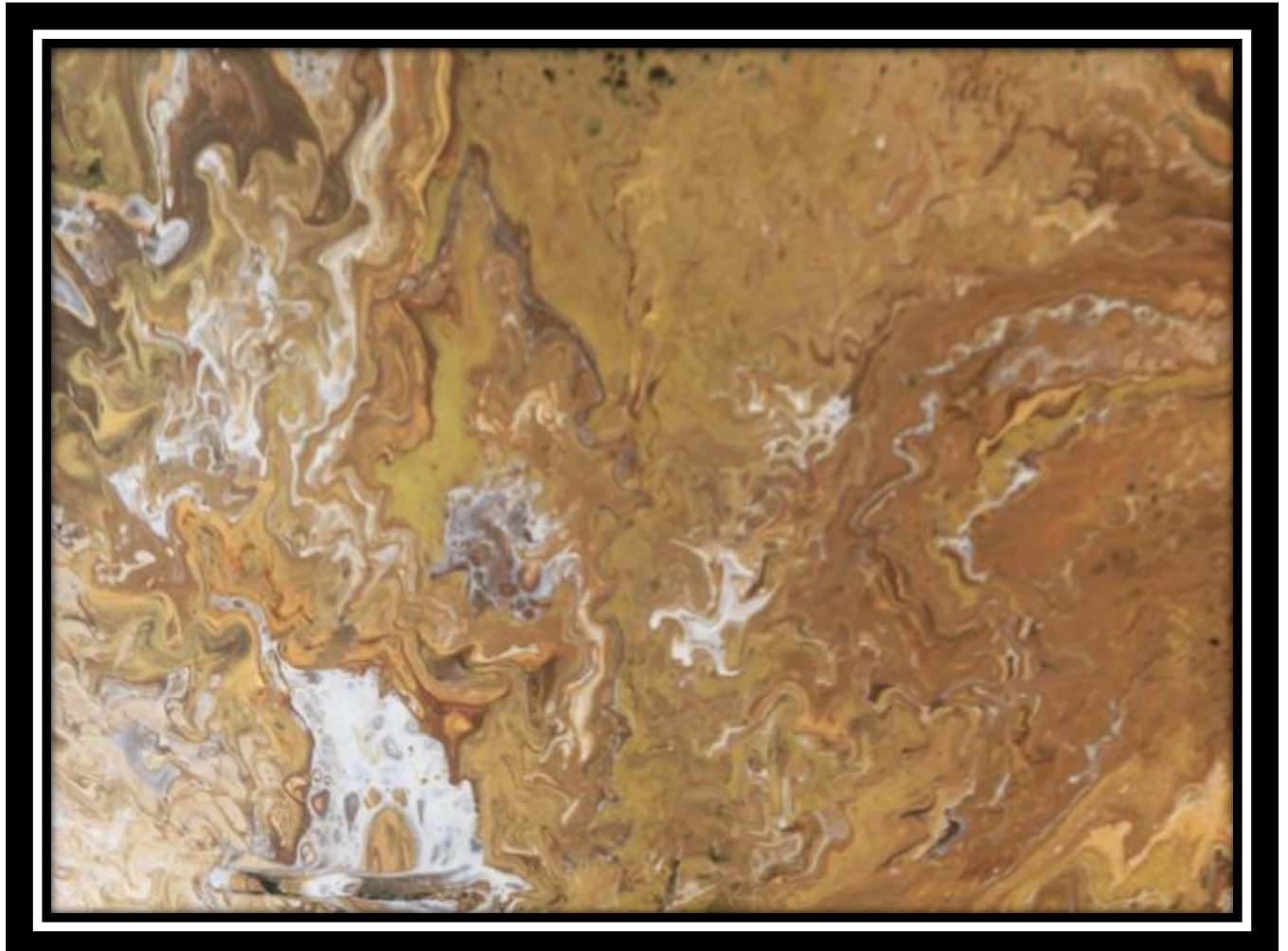


Artemis Crater I

\$950.00 Archival acrylic 22 x 28

Primary of the Artemis Crater series. Vibrant golds, whites and tans Pairs well with the smaller Artemis Crater II.

Professionally mounted in a modern floater frame. See Trek to Aureus Lake for a sample of framing.



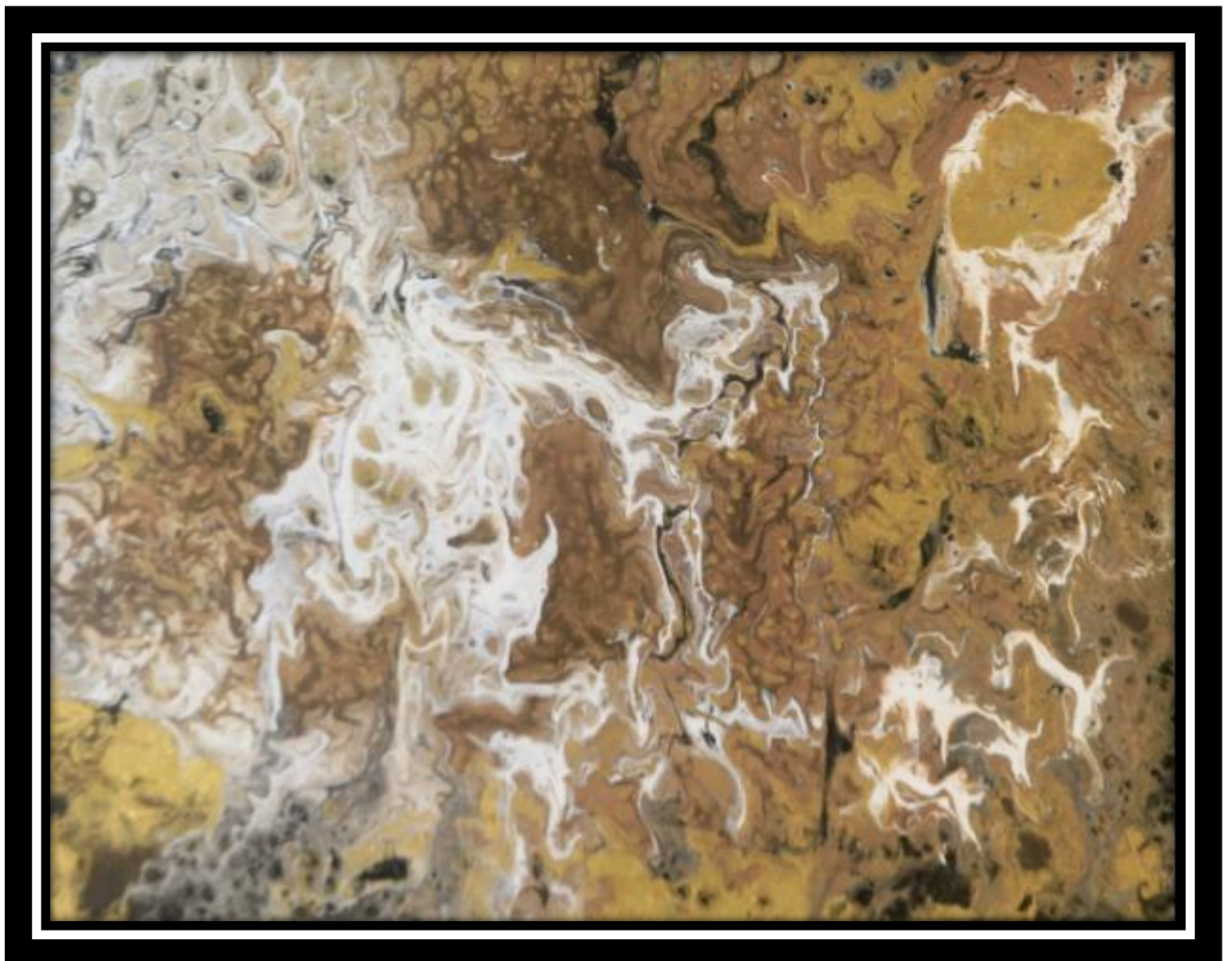
Artemis Crater II

\$600.00 Archival Acrylic 18 x 20

Private collection Jupiter, Florida; no longer available.

Golds, more muted tans and browns with areas of dense detail.
Pairs well with Artemis Crater I.

Professionally mounted in a modern floater frame.
See Trek to Aureus Lake for a sample of framing.

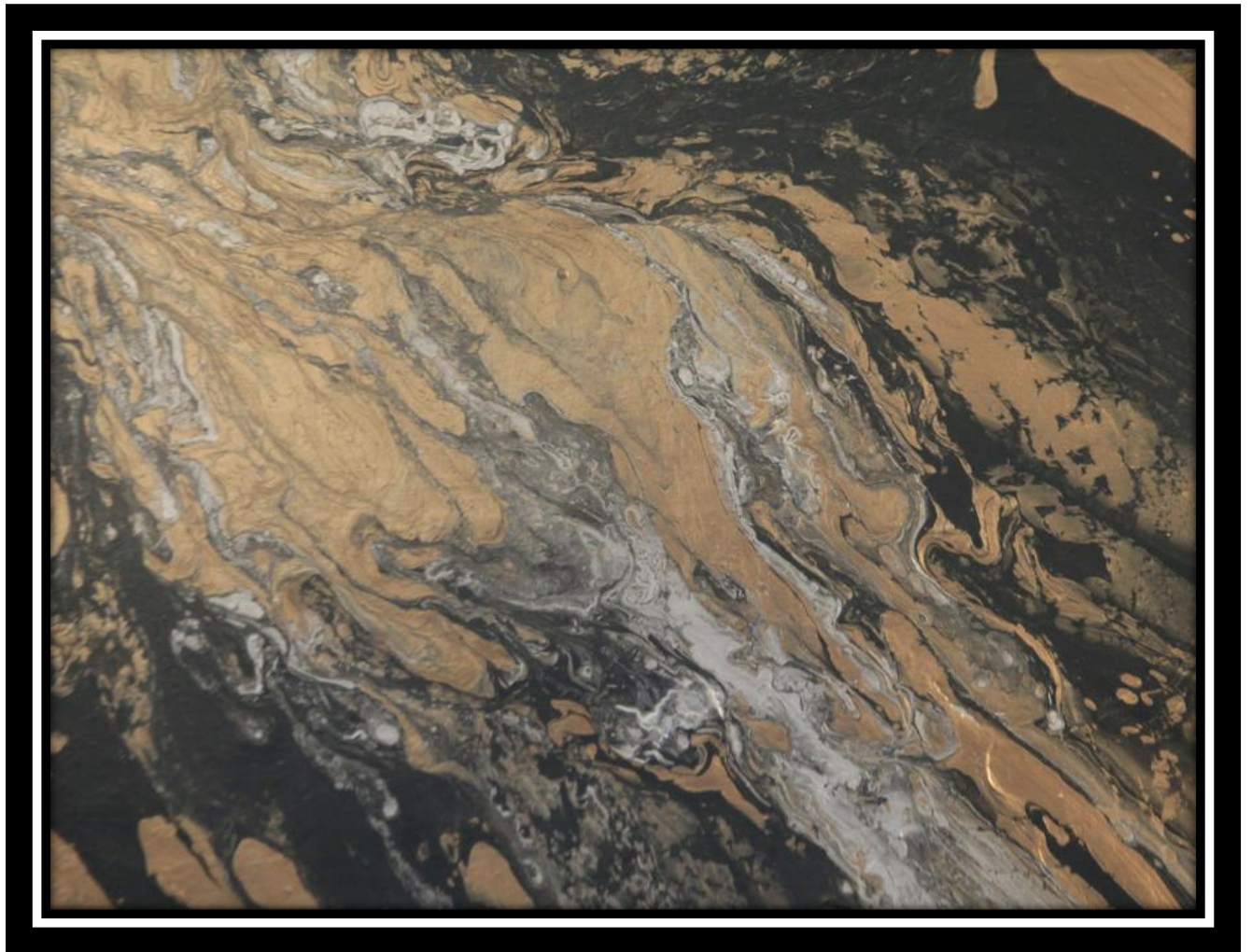


Artemis Crater III

\$850.00 Archival acrylic 22 x 28

Browns, tans, flowing golds. Part of the Artemis Crater series.

**Professionally mounted in a modern floater frame.
See Trek to Aureus Lake for a sample of framing.**

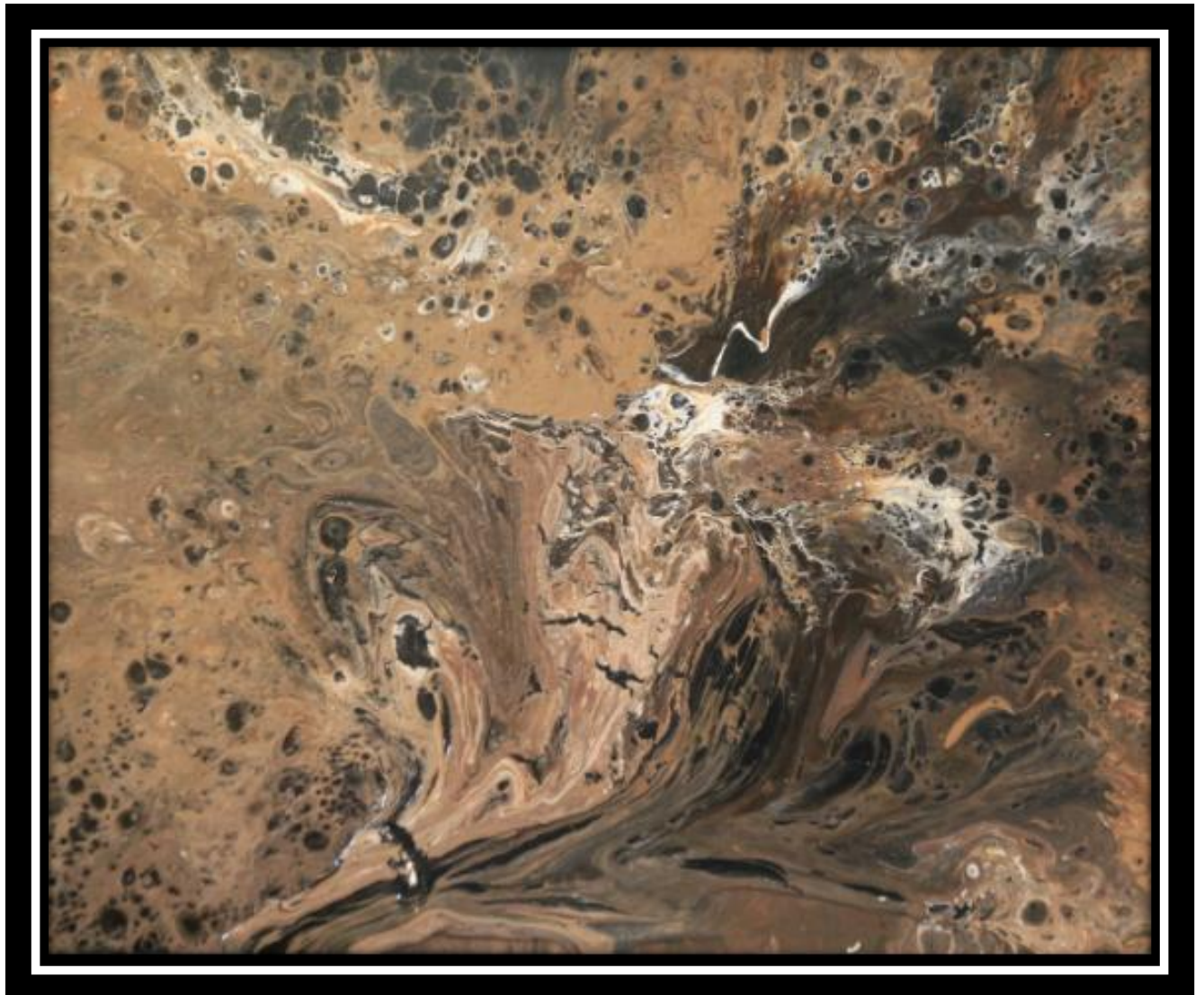


Artemis Crater IV

\$650.00 Archival acrylic 20 x 24

**Browns, tans, flowing golds; heavy impasto and some fine detail.
Part of the Artemis Crater series.**

Professionally mounted in a modern floater frame.
See Trek to Aureus Lake for a sample of framing.



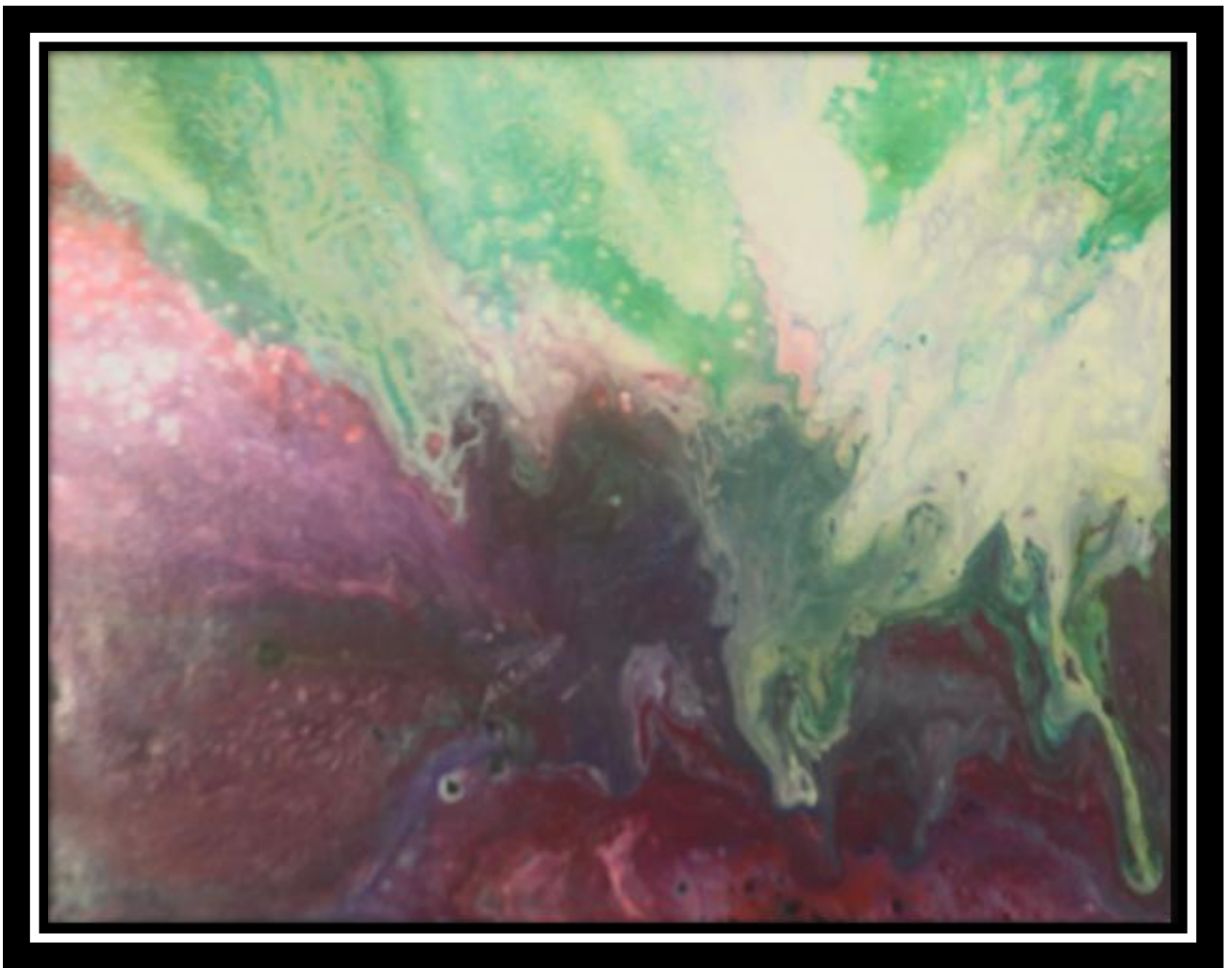
Purple Tide

650.00 Archival Acrylic 16 x 20

Private placement, Florida. No longer available.

Subtle purples and vibrant greens.

Professionally mounted in a modern floater frame. See Trek to Aureus Lake for a sample of framing.



Blue Crease

\$750.00 Archival acrylic 20 x 24

Accented blues with moderate swirling impasto effect.

Professionally mounted in a modern floater frame.
See Trek to Aureus Lake for a sample of framing.

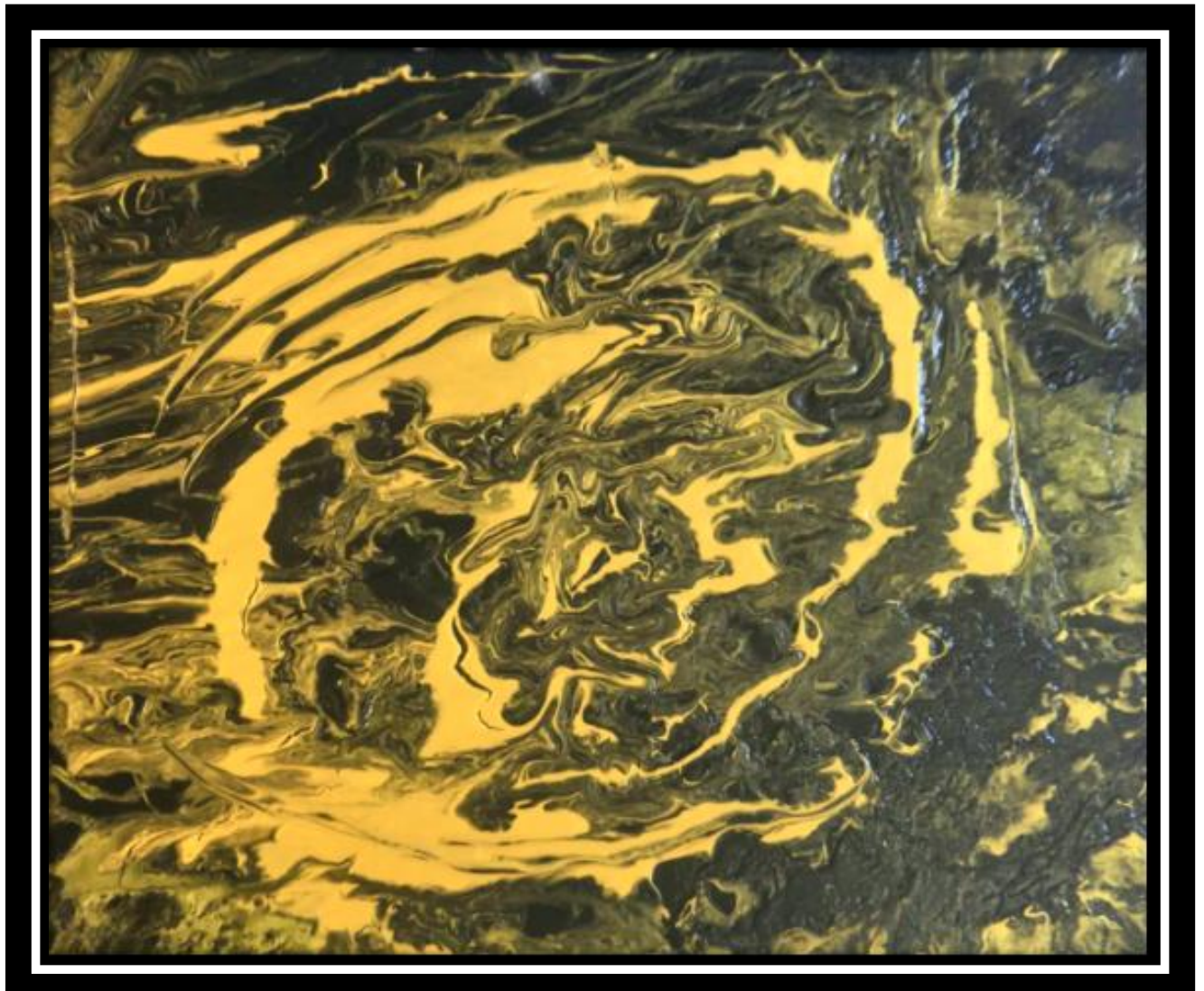


Carla's Nautilus IV

\$850.00 Archival acrylic 20 x 24

Dramatic, active blacks and golds; part of the Carla's Nautilus series with more active, jagged movement.

Professionally mounted in a modern floater frame.
See Trek to Aureus Lake for a sample of framing.

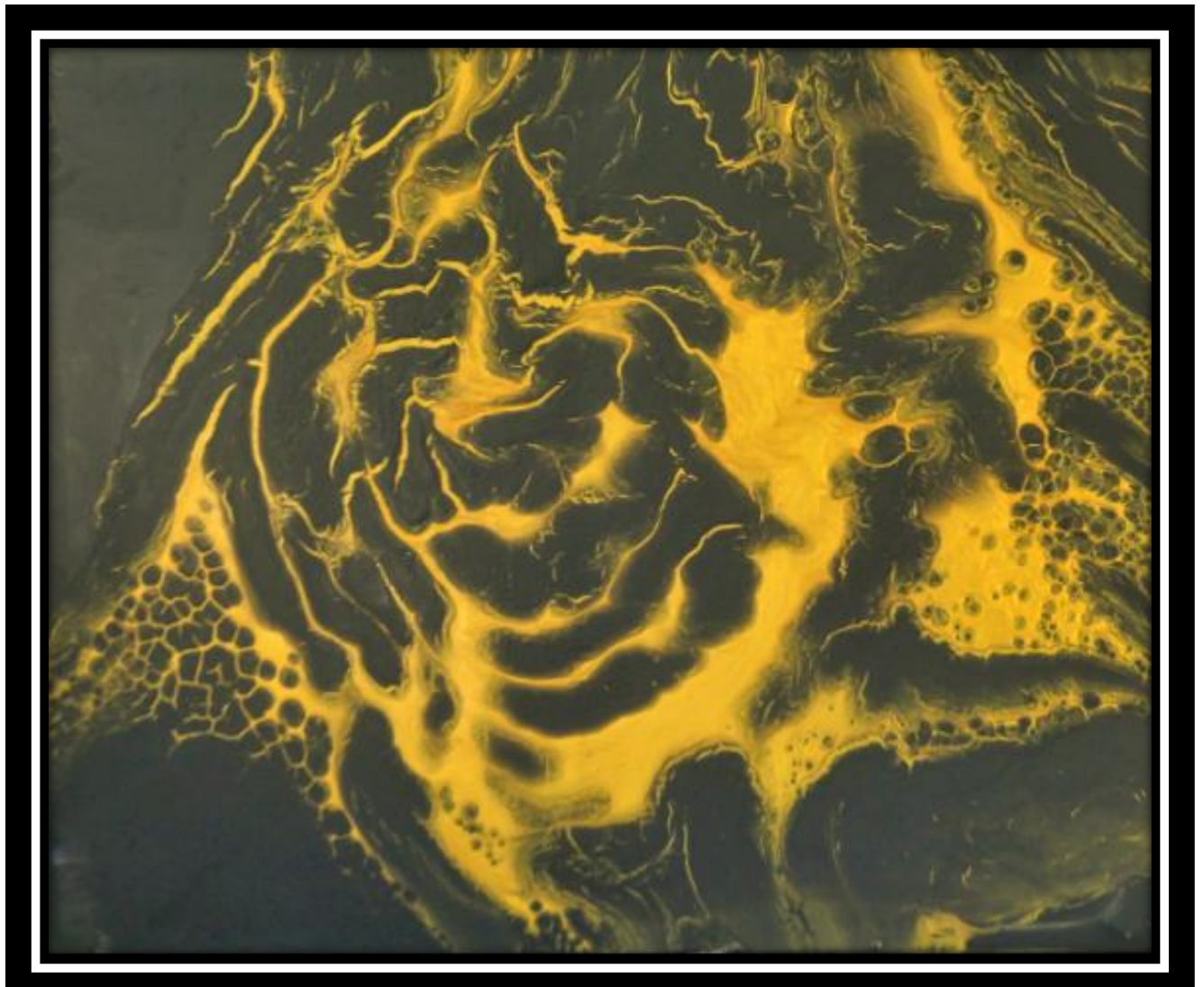


Carla's Nautilus I

\$950.00 Archival acrylic 24 x 30

Unusual stark gray and dramatic, swirling gold; primary of the Carla's Nautilus series.

Professionally mounted in a modern floater frame. See Trek to Aureus Lake for a sample of framing.

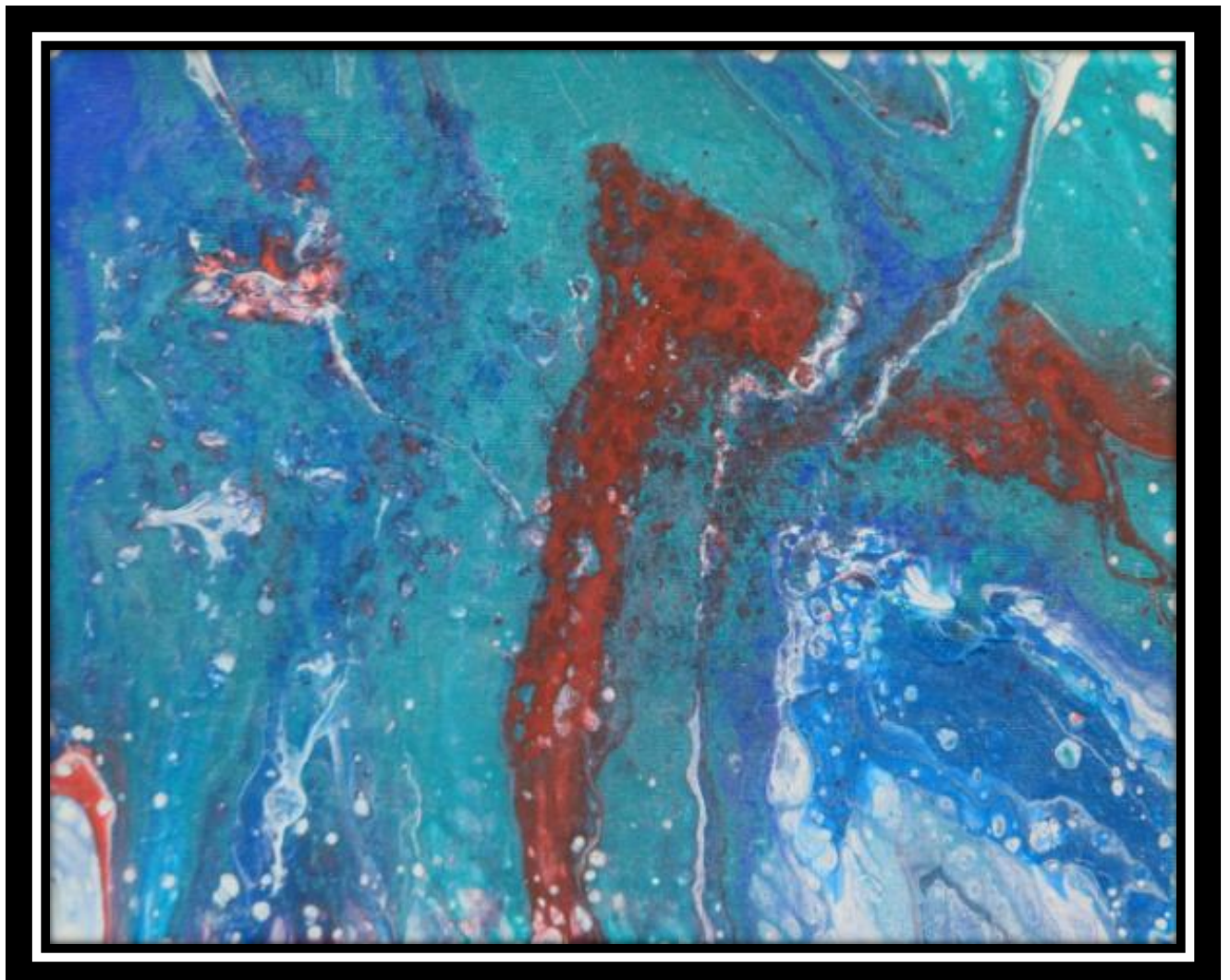


Cellular Spectrum II

\$450.00 Smaller archival acrylic 8 x 10 In private placement, Quito, Ecuador. No longer available.

Compact but complex cellular structures with vibrating rusts and blues.

Professionally mounted in a modern floater frame. See Trek to Aureus Lake for a sample of framing.

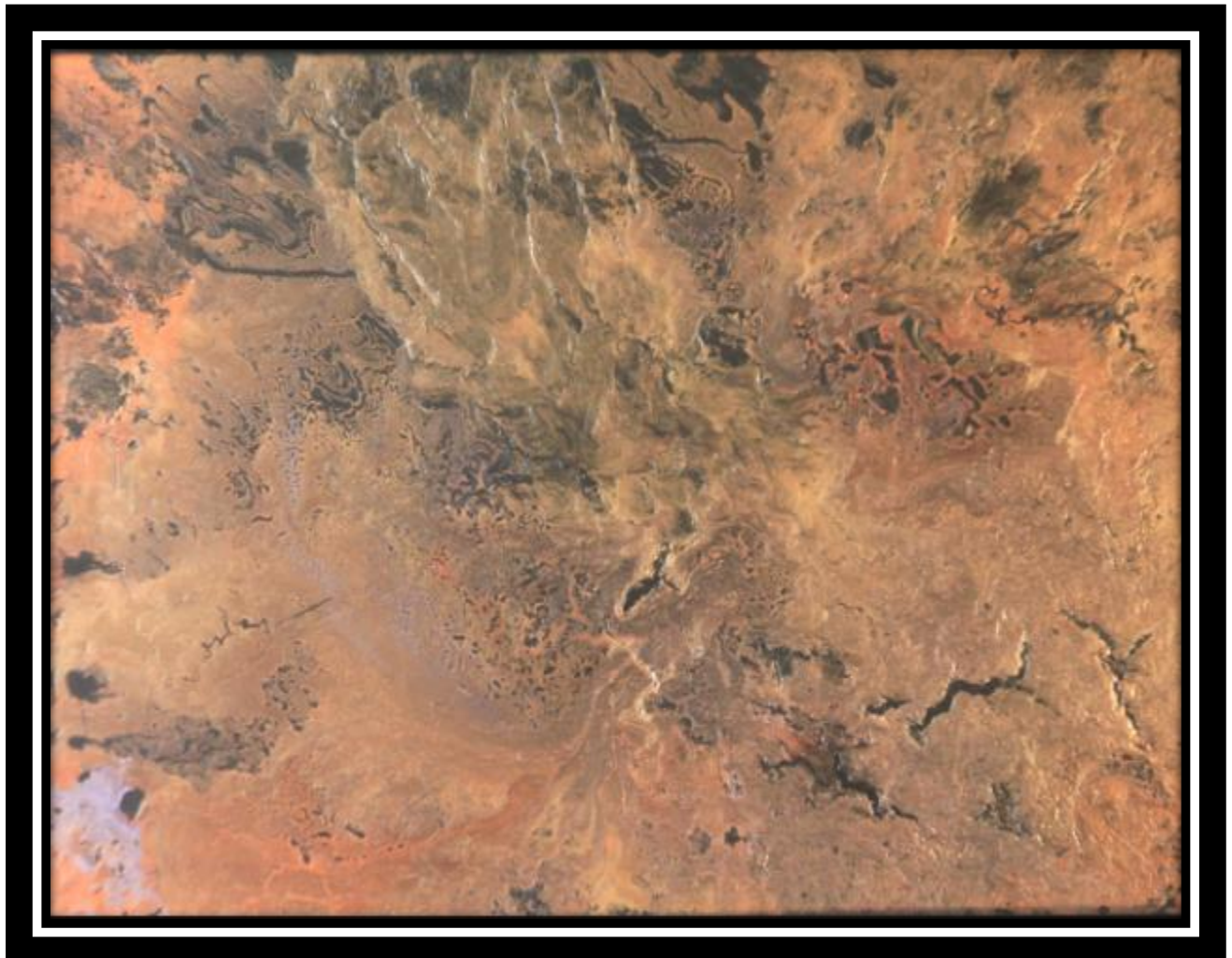


Urgent Copper

\$950.00 Archival acrylic 20 x 24

Powerful metallic with heavy impasto effect; great molten flowing motion.

Professionally mounted in a modern floater frame.
See Trek to Aureus Lake for a sample of framing.

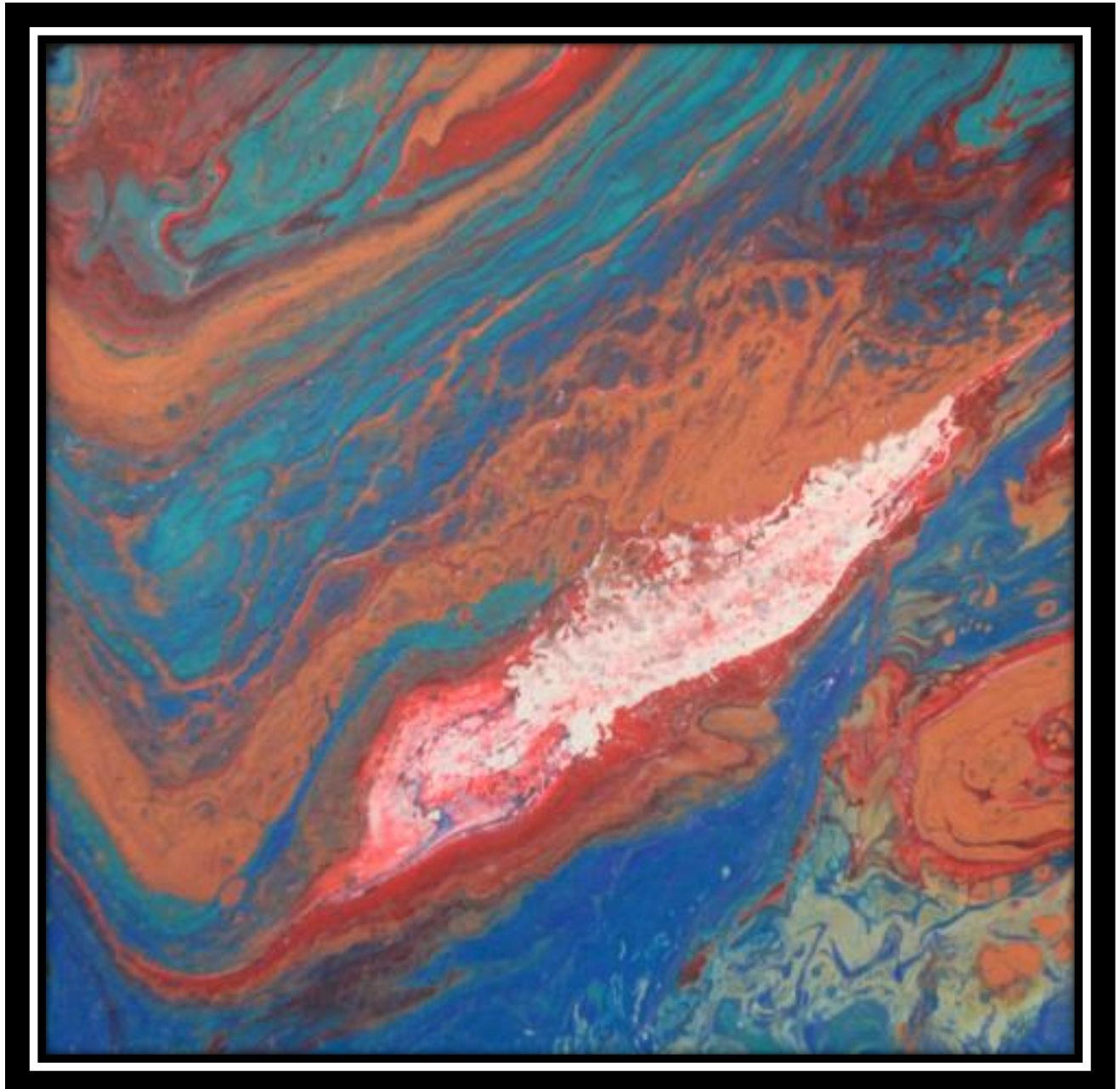


Forged Bronze I

\$700.00 Archival acrylic 16 x 16

Strong metallics in copper and verdigris.

Professionally mounted in a modern floater frame.
See Trek to Aureus Lake for a sample of framing.

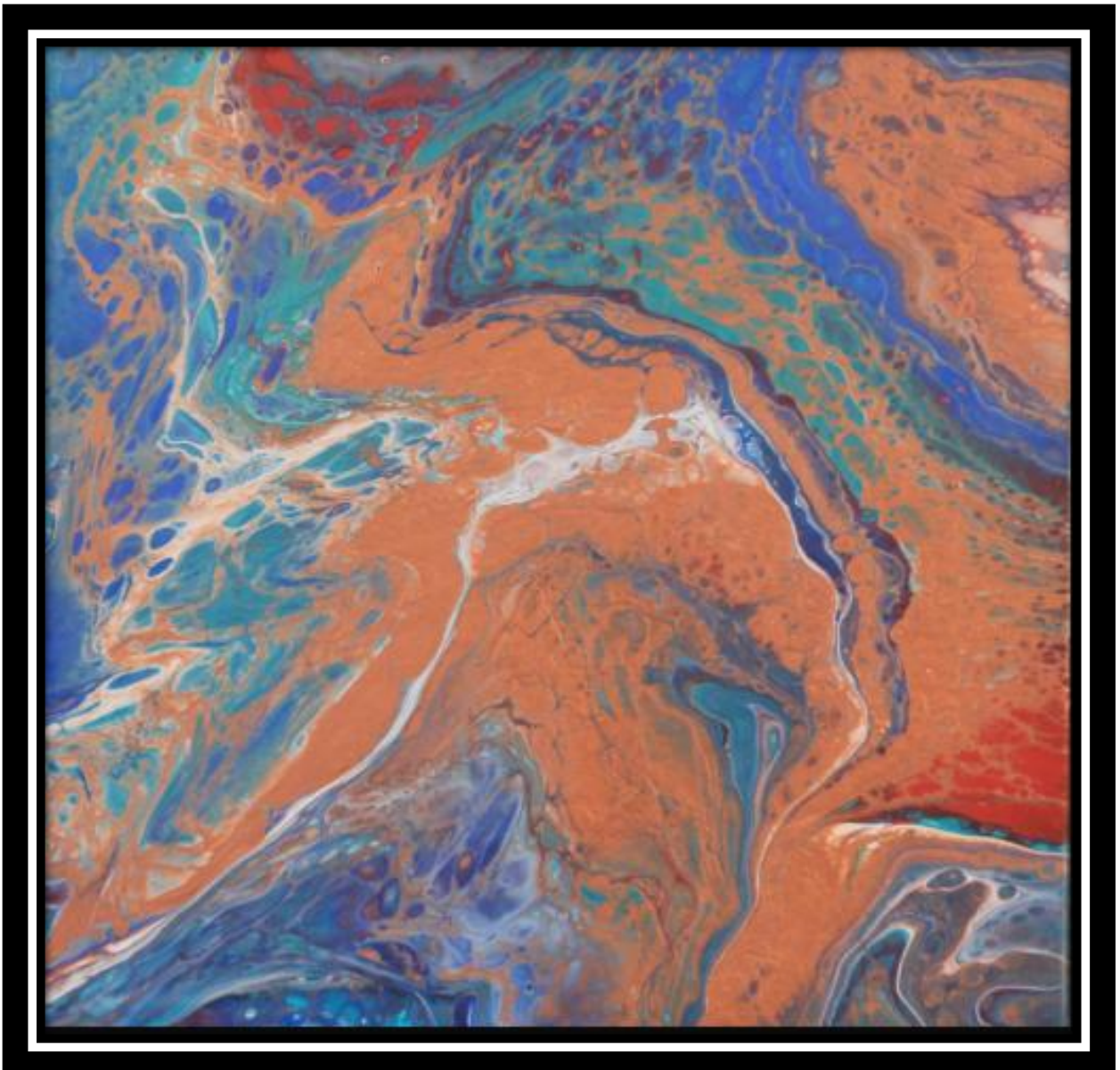


Forged Bronze II

\$700.00 Smaller archival acrylic 16 x16

Strong metallic bronze with blues and a touch of red with motion flow; cousin to Forged Bronze I.

Professionally mounted in a modern floater frame.
See Trek to Aureus Lake for a sample of framing.

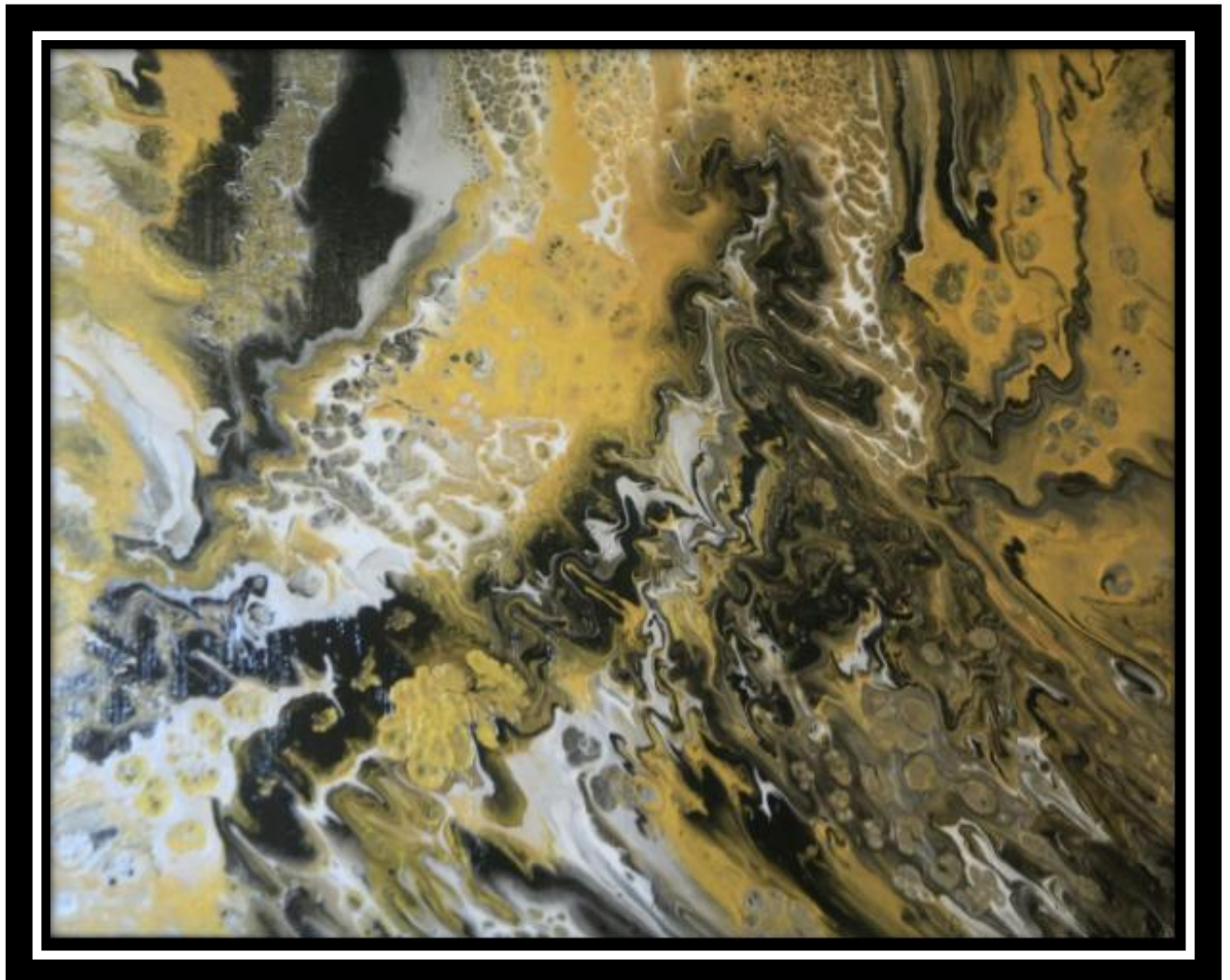


Gold Intrusion

\$950.00 Archival acrylic 24 x 30

Larger canvas with golds, tans, blacks and grays in complex flowing pattern.

Professionally mounted in a modern floater frame. See Trek to Aureus Lake for a sample of framing.



Ineluctable Resurgence of Evil

\$950.00 Archival acrylic 20 x 24

Strong blacks with deep reds and yellow highlights in vibrating display. One of our most serious and somewhat disturbing pieces.

**Professionally mounted in a modern floater frame.
See Trek to Aureus Lake for a sample of framing.**



Mad Mardi Gras

\$650.00 Archival acrylic 20 x 24 on rigid canvas board.

Festive bright reds, oranges and blues in active array.

Professionally mounted in a modern floater frame.
See Trek to Aureus Lake for a sample of framing.



Magellanic Metallic

\$600.00 Smaller archival acrylic 16 x 16

Strong metallic copper and verdigris with striking ethereal blue.

Professionally mounted in a modern floater frame. See Trek to Aureus Lake to get a sample of framing.



Red Nebula

\$600.00 Smaller archival acrylic 16 x 16

Celestial image in coppers and reds on blue; would pair well with Magellanic Metallic.

Professionally mounted in a modern floater frame. See Trek to Aureus Lake to get a sample of framing.



Sybil's Font I

\$900.00 Archival acrylic 24 x 30

No longer available. In private placement, Jupiter, Florida.

Swirling, vibrating blues and whites with hints of reds.

Professionally mounted in a modern floater frame. See Trek to Aureus Lake to get a sample of framing.



Sybil's Font II

\$400.00 Smaller archival acrylic 8 x 10 Not available. In private placement, Jupiter, Florida.

Heavy impasto in crazed whites with hints of reds and grays; pairs with Sybil's Font I.

**Professionally mounted in a modern floater frame.
See Trek to Aureus Lake to get a sample of framing.**



Sybil's Font III

\$500.00 Archival acrylic 8 x 10 Not available. In private placement, Jupiter, Florida.

Heavy impasto in crazed whites with hints of reds and grays; pairs with Sybil's Font I and II.

**Professionally mounted in a modern floater frame.
See Trek to Aureus Lake to get a sample of framing.**



Turbulent Intrusion

\$750.00 Archival acrylic 24 x 30

Active reds, whites and dominant greens; moderate impasto.

Professionally mounted in a modern floater frame.
See Trek to Aureus Lake to get a sample of framing.



Tidepool II

\$800.00 Archival acrylic 20 x 24 Private placement, Arizona.
No longer available.

complex foam and blues with a spec of gold. Shown with
professionally mounted floater frame.



Aligation

\$750.00 Archival Acrylic 18 x 24

Playful, whimsical interpretation of reptile scales in subtle greens. Complex textures with moderate impasto.

Professionally mounted in a modern floater frame.
See Trek to Aureus Lake for a sample of framing.

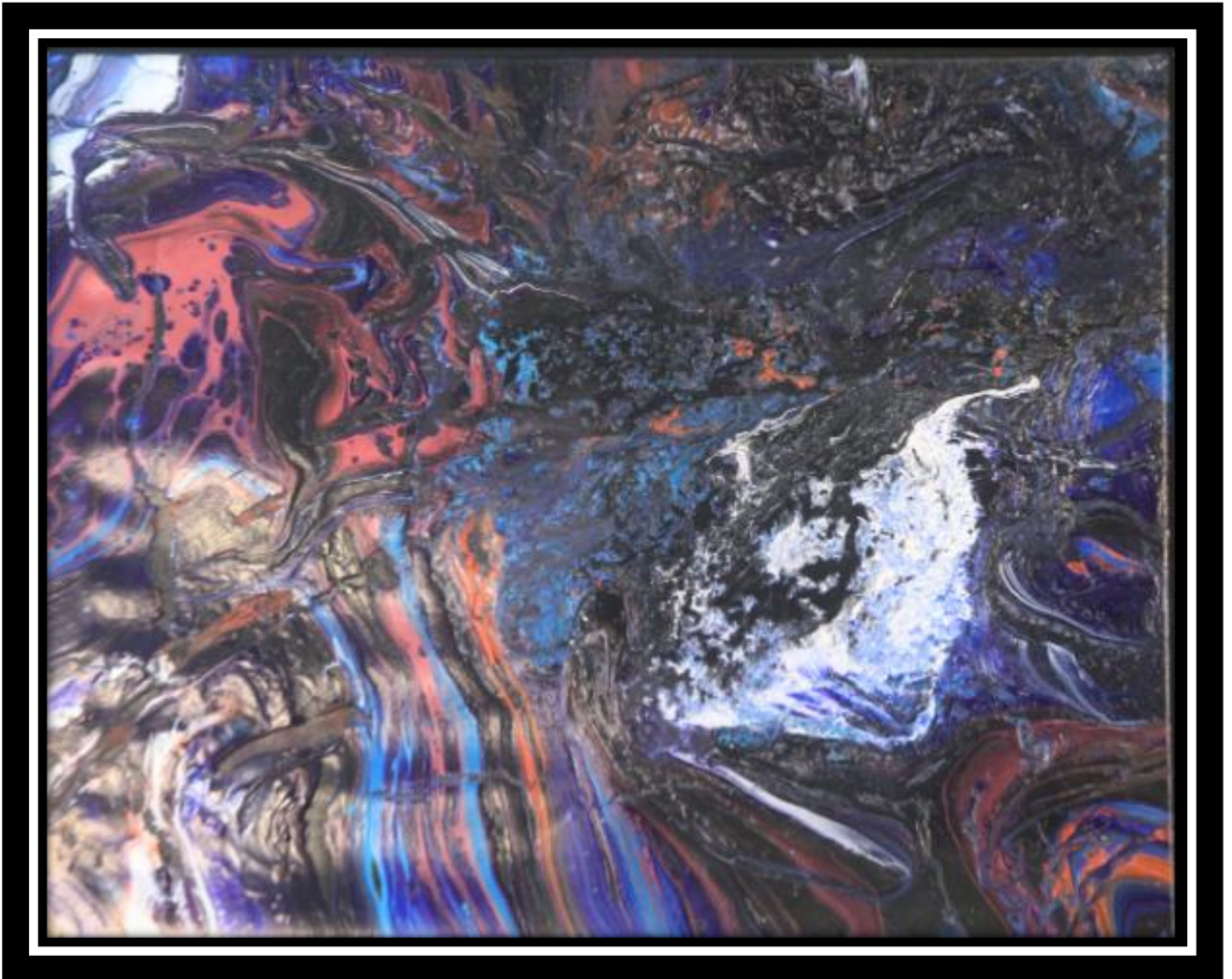


Cold Lava

\$850.00 Archival Acrylic 22 x 28

Deep, flowing blues with white and vibrant red highlights.
Moderate impasto.

Professionally mounted in a modern floater frame.
See Trek to Aureus Lake for a sample of framing.



Glaciated Ridge

\$750.00 Archival Acrylic 20 x 24.

Ochres, browns with white highlights in a flowing sense of cold.
Moderate impasto.

Professionally mounted in a modern floater frame.
See Trek to Aureus Lake for a sample of framing.



Pocked Vibration

\$850.00 Archival Acrylic 24 x 30

Unusual texture with golds, reds and whites. Dramatically active with complex fine structural detail demanding close inspection.

**Professionally mounted in a modern floater frame.
See Trek to Aureus Lake for a sample of framing.**



Joy Without Constraint Rondo

\$650.00 Archival Acrylic 24 round.

Surfeit of warm swirling colors. Metallic golds, orange, olive.
Happiness

Unframed, ready for immediate hanging..



Miami Blues

\$650.00 Archival Acrylic 20 x 24 hard back canvas. Private placement, Florida. No longer available.

Vibrant cultures at play in southern Florida. Gentle reds, greens, yellows with highly complex fine detail demanding thorough contemplation.

**Professionally mounted in a modern floater frame.
See Trek to Aureus Lake for a sample of framing.**



Strawberry Jubilation

\$750.00 Archival Acrylic 22 x 28

Playful and joyous carmine reds speaking to oranges and whites. Highly complex fine scale detail.

Professionally mounted in a modern floater frame.
See Trek to Aureus Lake for a sample of framing.



Synapse Convolution

\$500.00 Archival acrylic 24 x 30

Private placement, Florida. No longer available.

Complex movement, metallics, organic tans and greens with dense, fine detail.

Professionally mounted in a modern floater frame.
See Trek to Aureus Lake for a sample of framing.

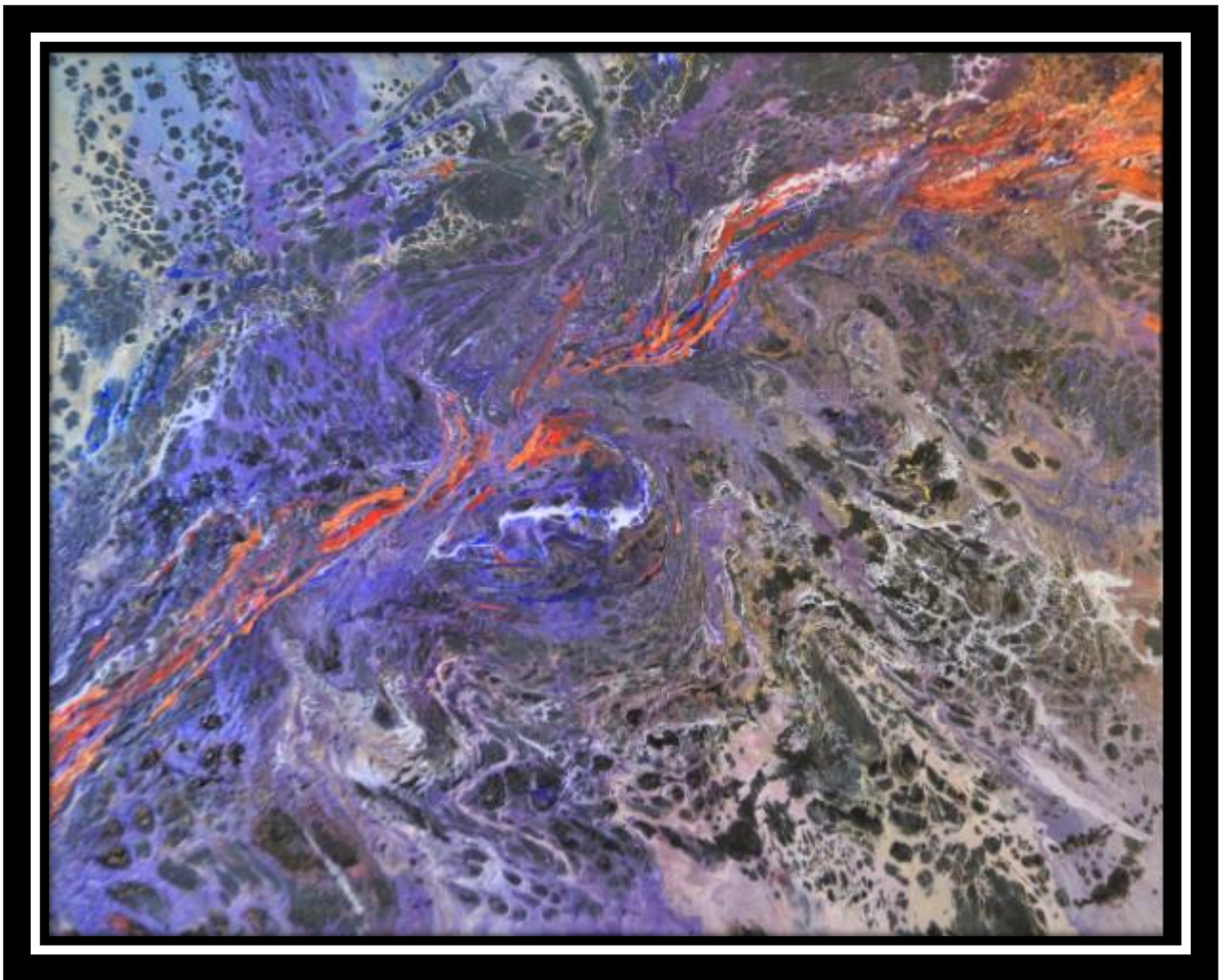


Cratered Crevice

\$850.00 Archival Acrylic 24 x 30

Unusual complex pattern; highly textured grays with red and copper highlights.

Professionally mounted in a modern floater frame. See Trek to Aureus Lake for framing.



Dizzy

\$850.00 Archival Acrylic 24 x 30. Privately placed, Florida. No longer available.

Tortured, flowing with contrasting reds, yellows, blues and golds. Unusual resin coating.

Professionally mounted in a modern floater frame. See Trek to Aureus Lake for framing.



Nebula Blue I

\$1050.00 Archival Acrylic 24 x x 36. Cradled birch wood panel.

Heavenly blues and floating purples. Very fine cellular detail.

Pairs well with Nebula Blue II

Professionally mounted in a modern floater frame. See Trek to Aureus Lake for framing.



Nebula Blue II

\$850.00 Larger archival Acrylic 24 x 36. Cradled birch wood panel.

Heavenly blues and floating purples. Very fine cellular detail.

Pairs well with Nebula Blue I

Professionally mounted in a modern floater frame. See Trek to Aureus Lake for framing.



Cerberus's Parlor

\$850.00 Archival Acrylic 24 x 30.

Tortured reds, yellows in flaming pattern on dark blue.

Professionally mounted in a modern floater frame.



Descending Lagunita

\$650.00 Archival Acrylic 24 x 30.

Gentle, delicate blues and grays dominate in flowing movement.

Professionally mounted in a modern floater frame.
See Trek to Aureus Lake for framing.



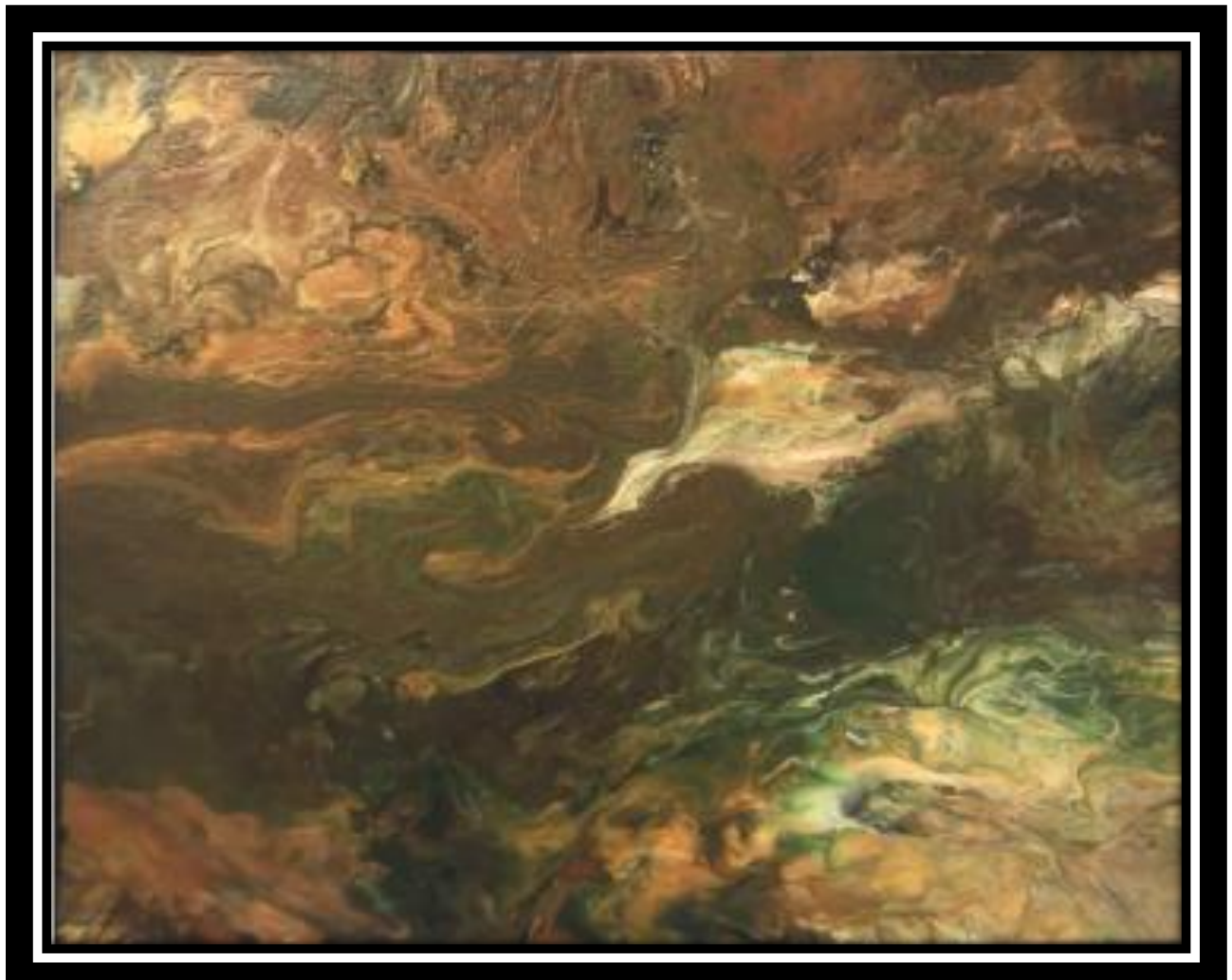
Fortune's Passenger

\$850 16 x 20 archival acrylic .

Not available. In private placement, Chicago.

Flowing lines of organic browns and greens; somewhat subtly tormented with an unusual provenance.

**Professionally mounted in a modern floater frame.
See Trek to Aureus Lake for framing.**

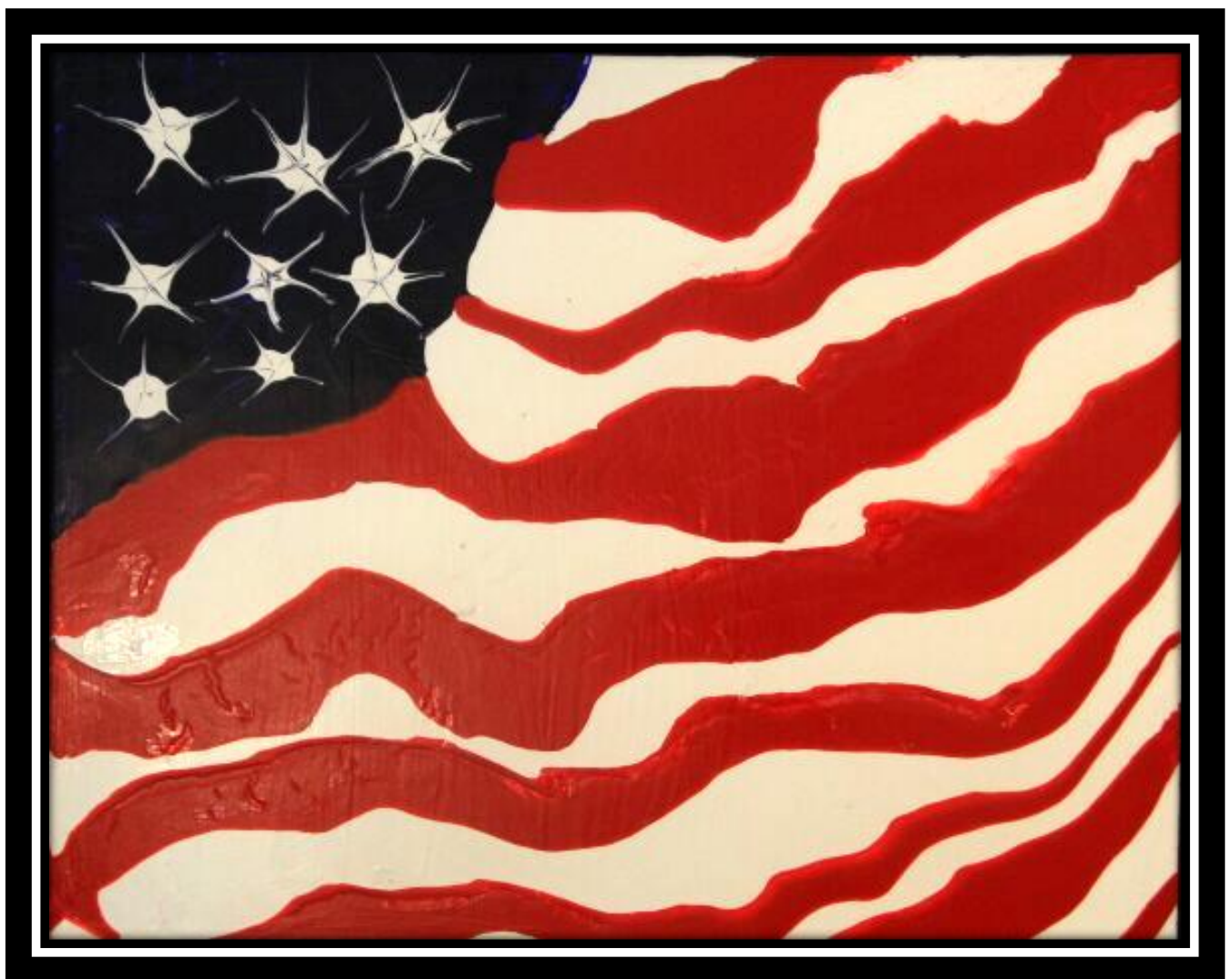


State of the Union I

\$850 24 x 30 archival acrylic

Classic flag colors showing the tortured state of the American Union. Primary for the series of three paintings. This is the least tortured of the series of three.

Professionally mounted in a modern floater frame.
See Trek to Aureus Lake for framing.



State of the Union II

\$850 24 x 30 archival acrylic

Classic flag colors showing the tortured state of the American Union. Part of the series of four paintings. More tormented than its primary.

Professionally mounted in a modern floater frame.
See Trek to Aureus Lake for framing.



State of the Union III

\$850 24 x 30 archival acrylic

Classic flag colors showing the tortured state of the American Union. Part of the series of four paintings. Most tormented of the series.

Professionally mounted in a modern floater frame.
See Trek to Aureus Lake for framing.



Nebula Blue II

\$1050 20 x 30 archival acrylic on cradled birch panel

Flowing, swirling blues and purples with white highlights

**Professionally mounted in a modern floater frame.
See Trek to Aureus Lake for example of framing.**



Statement in White

\$950 24 x 30 archival acrylic In private placement, Florida, no longer available.

Subtle swirling whites with some blacks and tans. Active.

Professionally mounted in a modern floater frame.
See Tidepool II for framing.



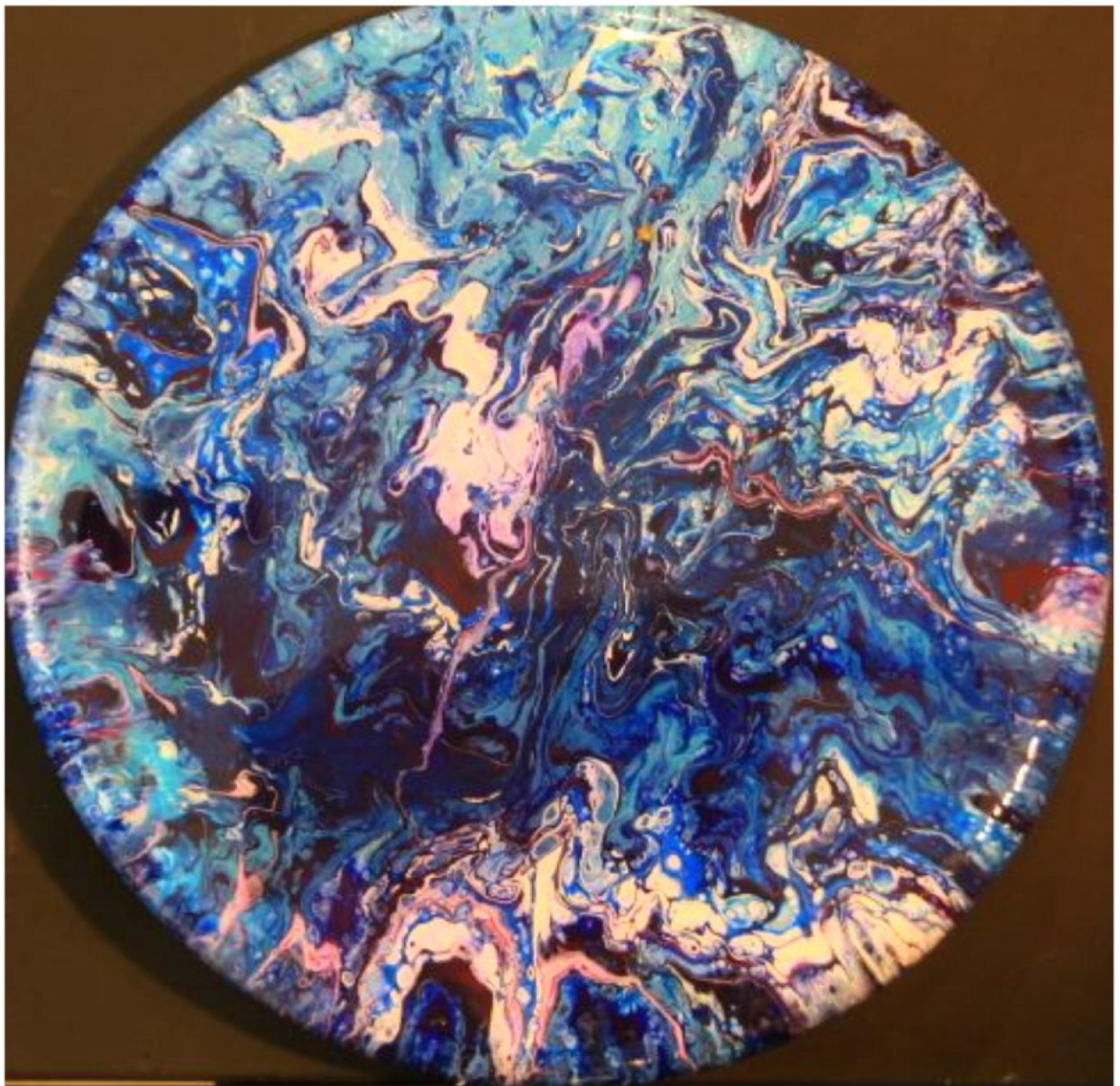
Not Too Spicy Rondo

\$950 24" archival acrylic

Commission in private placement, California. Not available.

Active blues with some startling pinks and tans and considerable fine structure detail.

Unframed; ready to hang



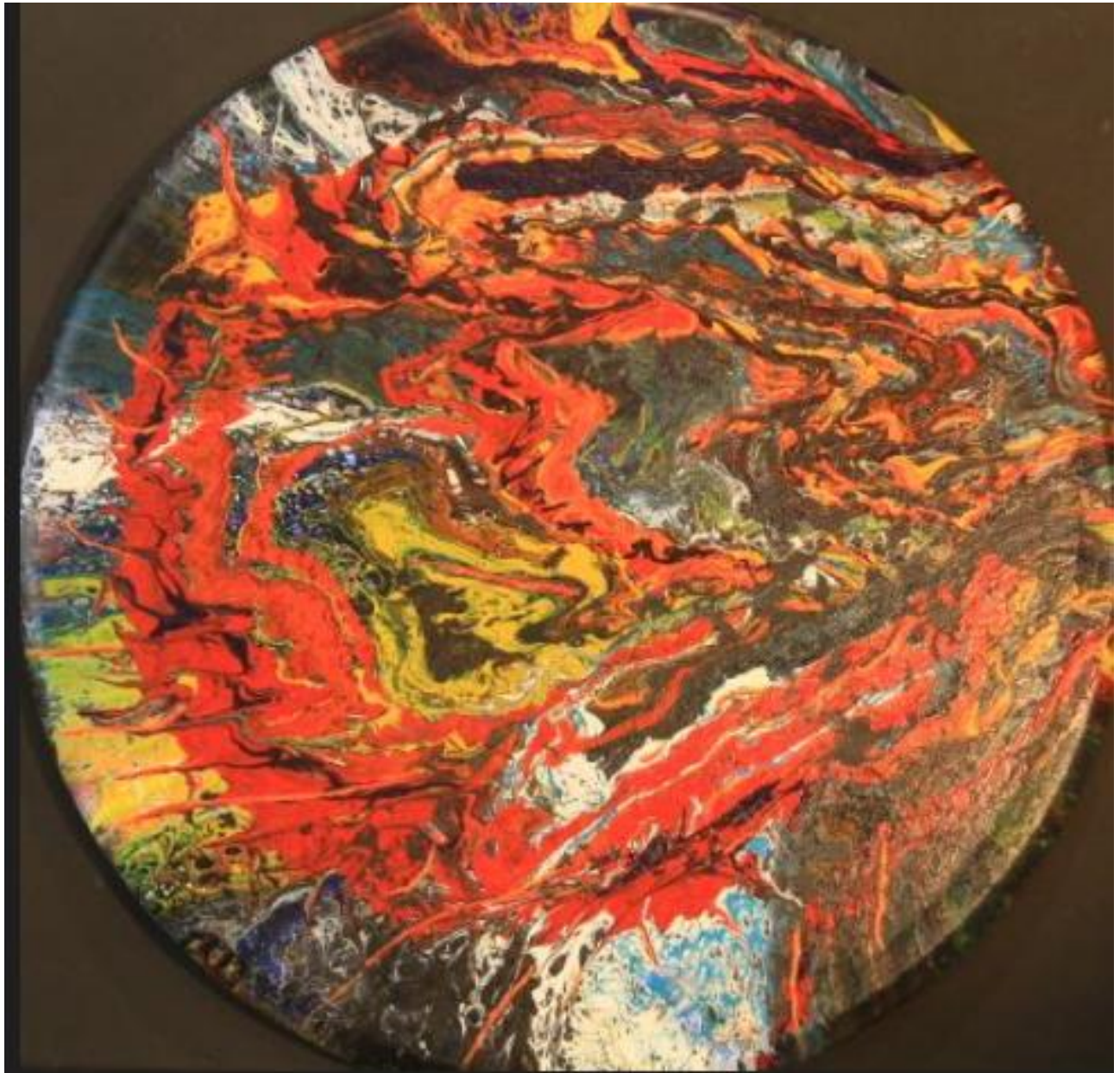
Magma Flow Rondo

\$950

30" archival acrylic

Strong reds, oranges, yellows with some metallic golds in a strident statement and significant complex fine detail.

Unframed; ready to hang.



Viridian Vibes

\$1450 30 x 41 archival acrylic Commission In private placement, Arizona, no longer available.

Starkly contrasting white and black stripes in heavy impasto with an intrusive section of flashing, shimmering jeweled viridian.

Professionally mounted in a modern floater frame.
See Trek to Aureus Lake for example of framing.



Zagged

\$1450

Large 36 x 48 archival acrylic on cradled birch panel

Intense reds, blues, oranges, yellows with a somewhat tortured complex detail

Professionally mounted in a modern floater frame.

See Trek to Aureus Lake for an example of framing.



Allegro Vivace

\$1050 30 x 40 archival acrylic

Designed to hang vertically.

Strong, contrasting statement in golds, blacks and whites with a moderate impasto surface and complex fine detail in close-up viewing.

Would pair well with Allegro Ma Non Troppo.

Mounted in a modern floater frame ready to immediately hang. See Trek to Aureus Lake for framing example.



Ad Astra

\$1350 Larger archival Acrylic 36 x 48 on cradled birch panel designed to hang vertically.

Humanity is ready to ascend to distant planets.

Stark blacks and whites with extremely complex fine close-up detail.

Mounted in modern floater frame ready for immediate hanging.

See Trek to Aureus Lake for framing example.



Galactic Core Rondo

\$900 Archival acrylic round 30"

Shimmering reflective blues giving the sense of deep space near the galactic core.

Would pair well with Nebula Blue and Tidepool series.

Unframed and ready to hang.



Allegro Ma Non Troppo

\$1050 Archival acrylic 30 x 40

Stark flowing metallic golds and bronzes with a very unusual surface texture.

Would pair well with Allegro Vivace.

Professionally mounted in modern floating frame ready to hang. See Trek to Aureus Lake for example of framing.



Sforzando Portamento

\$950 Archival acrylic 30 x 40

Deep, moving purples and blues with considerable fine detail demanding close inspection.

Pairs well with Nebula Blue I and II, Galactic Core, and Tidepool III.

Professionally mounted in modern floating frame ready to hang. See Trek to Aureus Lake for a framing example.



Behind the Magellanic Cloud

\$1300 Larger archival acrylic 24 x 48 cradled birch panel designed to hang horizontally or vertically.

Coppers and golds against strong blues with complex cellular and flowing lace patterns.

Mounted in modern floating frame ready to hang. See Trek to Aureus Lake for framing example.



Euphoria Abyss

\$1350 Larger archival acrylic 24 x 48 cradled birch panel designed to hang horizontally or vertically.

Coppers and golds against strong blues with complex cellular and flowing patterns.

Mounted in modern floating frame ready to hang. See Trek to Aureus Lake for framing example.



Trek to Aureus Lake

\$1250

Archival acrylic 24 x 30 designed to hang horizontally or vertically.

Ebullient, bold, contrasting blues, greens, metallic golds with areas of complex, flowing detail.

Shown as mounted in modern floating frame ready to hang.



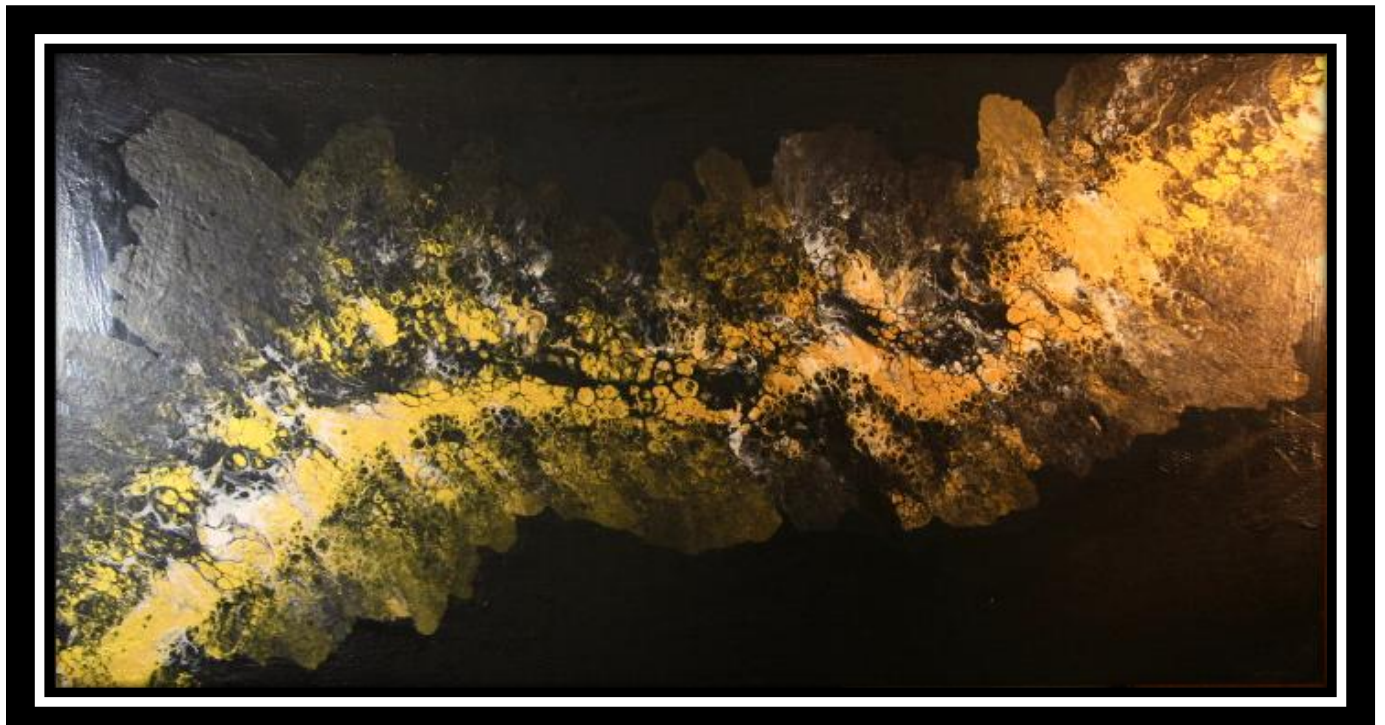
Nebula Gold

\$1450 Larger archival acrylic 24 x 48 on cradled birch wood panel.

Designed to hang horizontally or vertically.

Dramatic, stark golds and blacks of deep space. Microscopic detail demands close inspection.

Mounted in modern floating frame ready to hang.



Gold Waves

\$1150 Archival acrylic 24 x 30 on cradled birch wood panel.

**Ebullient and playful blues and golds with complex foam and bubbles.
Microscopic detail demands close inspection.**

Mounted in modern floating frame ready to hang.

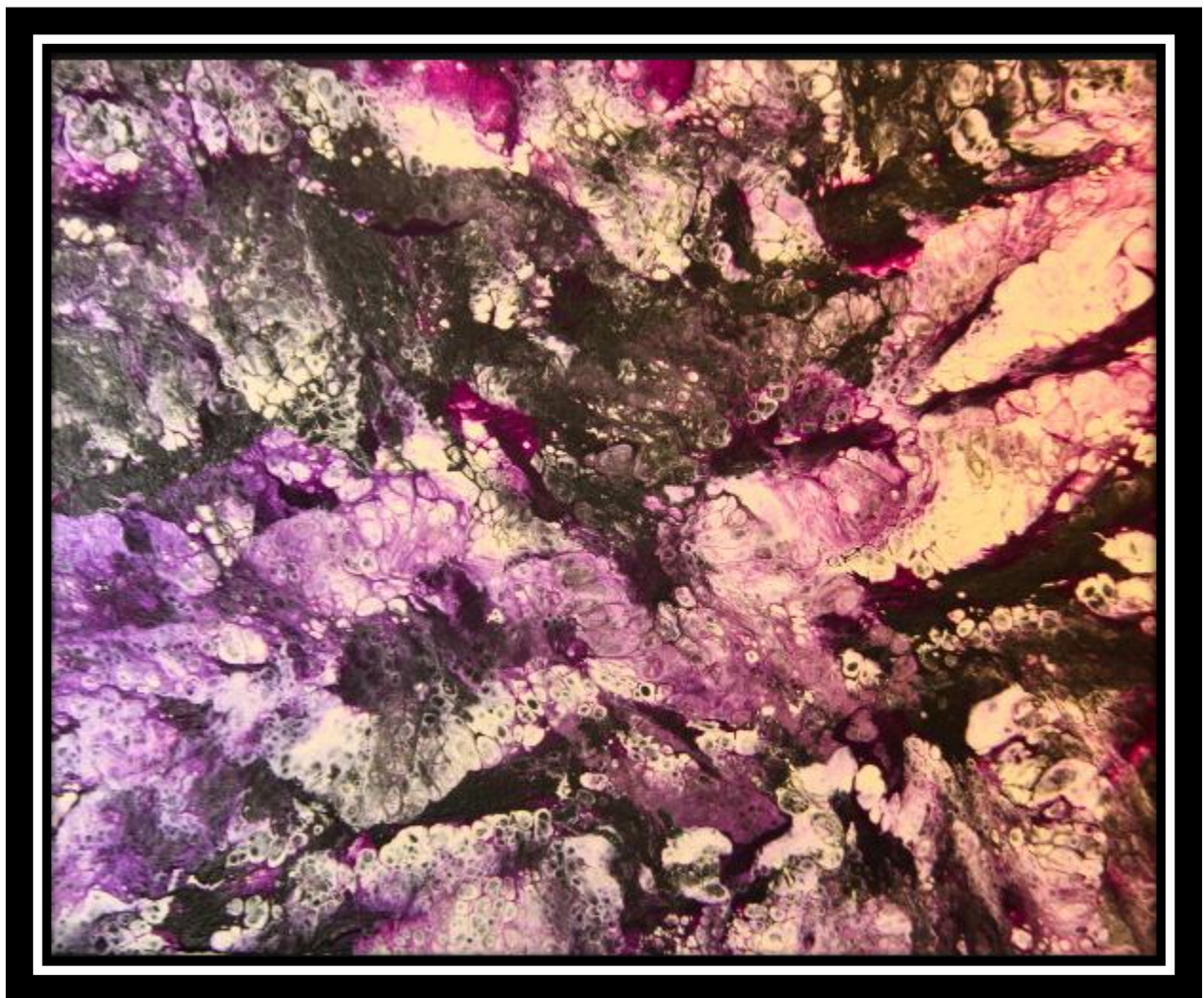


Nebula Magenta

\$1150 Archival acrylic 24 x 30 on cradled birch wood panel.

Relaxing contemplation of magentas against more stark black and whites with numerous areas of complex detail. Again, suggesting the unknowns of deep space.

Mounted in modern floating frame ready to hang.



Pyrrole Infinitude

\$850 Archival acrylic 20 x 24.

Contemplation of infinity in vibrant pyrrole orange against celestial blues and golds.

Mounted in modern floating frame ready to hang.



Belize Blue Hole

\$1250 Larger archival acrylic 30 x 40 on highly stable cradled birch wood panel.

Active movement in blues highlighted in whites surrounded by warmer, shimmering earth tones. Very fine, complex detail calling for close viewing.

Professionally mounted in a modern floater frame ready for hanging. Could be horizontal or vertical. Suggest examining Tidepool II for framing.



Best Laid Plans

\$1250

Larger archival acrylic 30 x 30 on super stable cradled birch wood panel.

Strong , warm metallic red/copper.in swirling movement with areas of heavy impasto effects and highly complex detail. Metallic silver and golds with some surprise areas of intense blue.

Professionally mounted in a modern floater frame and ready to hang. See Trek to Aureus Lake for a glimpse of the framing.



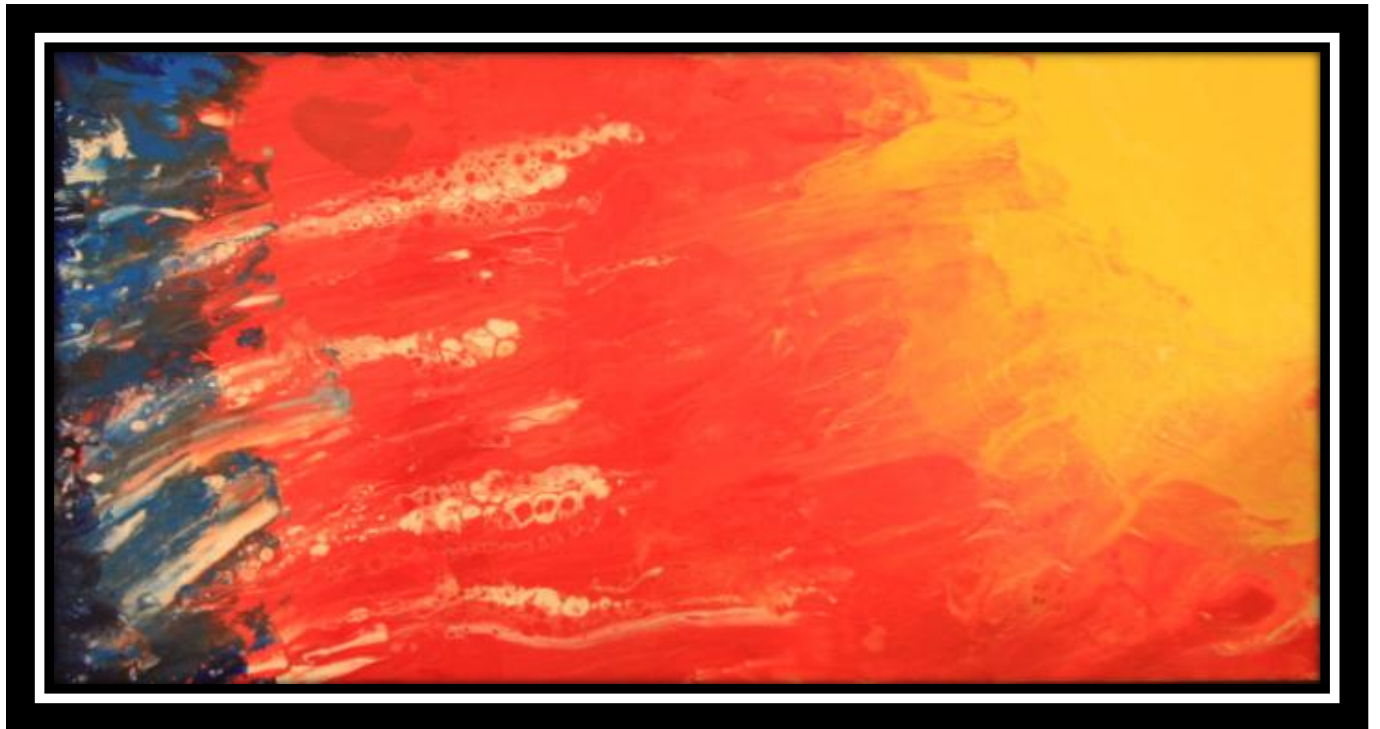
Dream of Icarus

\$1350

Larger archival acrylic 24 x 48 on cradled birch wood panel.

Hot reds, yellows fading to blues approaching the sun. Some unusual textures and impasto bearing close inspection along with fine detail.

Professionally mounted in a modern floater frame ready for immediate hanging. Can be horizontal or vertical. See Trek to Aureus Lake for framing example.



Turbulent Black Oort

\$1550

Large 24 x 48 archival acrylic on superbly stable cradled birch wood panel. Designed to hang vertically, but could also be horizontal.

Central theme is dramatic deep space turbulent black with thick, sculpted texture making the painting rather heavy. Central dark black raised impasto area is surrounded by a scintillating, sparkling colored starfield making for a very striking work departing from much of our other creations.

Shown professionally mounted in a modern floater frame ready for hanging.



Happy Hour I

\$1350

Large 24 x 48 archival acrylic on superbly stable cradled birch wood panel. Designed to hang vertically, but could also be horizontal

Wild abandon of moving colors with emphasis in warm reds, oranges against whites and blues. Tremendously complex details. Primary of the Happy Hour series.

Professionally mounted in a modern floater frame ready to hang. See Trek to Aureus Lake for framing example.



Happy Hour II

\$1650

Large 48 x 48 archival acrylic

Wild abandon of moving colors with emphasis in warm reds, oranges against whites and blues. Tremendously complex details. Secondary of the Happy Hour series.

Professionally mounted in a modern floater frame ready to hang. See Trek to Aureus Lake for framing example.



Happy Hour IV

\$1250

Large 24 x 60 archival acrylic

Dominant, flowing reds and oranges with some gold and extremely dense, complex fine detail and a moderately impasto effect glittering with flecks of reflective metallics.

Professionally mounted in a modern floater frame ready to hang. Can be horizontal or vertical. See Trek to Aureus Lake for framing example.



Inside the Beast Beelzebub

\$1450

Large 30 x 40 archival acrylic on expanded foam.

Very unusual tortured sculptural piece with dichroic gold and copper metallics that will change as the observer walks by.

Shown professionally mounted in a modern floater frame ready to hang. Can be horizontal or vertical. See Trek to Aureus Lake for framing example.



Geode Canyon

\$1250

Larger archival acrylic 24 x 48 designed to hang horizontally or vertically. On super resistant cradled birch wood panel.

Strong metallic coppers and golds emphasizing reds and yellows. Some localized zones of heavy impasto with a riot of medium and extra-fine detail demanding close observation.

Professionally mounted in a modern floater frame ready to hang. Can be horizontal or vertical. See Trek to Aureus Lake for framing example.



Setting on Lake

\$1550

Large archival acrylic 48 x 48.

Ephemeral and atmospheric soft yellows, oranges, moving metallic golds channeling J. M. W. Turner's Sun Setting On Lake. Some fine detail and light impasto texturing.

Professionally mounted in a modern floater frame ready to hang. See Trek to Aureus Lake for framing example.



Happy Hour V

\$1250

Larger archival acrylic 24 x 48 designed to hang horizontally or vertically. On super resistant cradled birch wood panel.

Playful and exuberant with riotous reds, yellows, swirling metallic golds with large as well as very fine complex detail. Moderate impasto texture.

Professionally mounted in a modern floater frame ready to hang. Can be horizontal or vertical. See Trek to Aureus Lake for framing example.



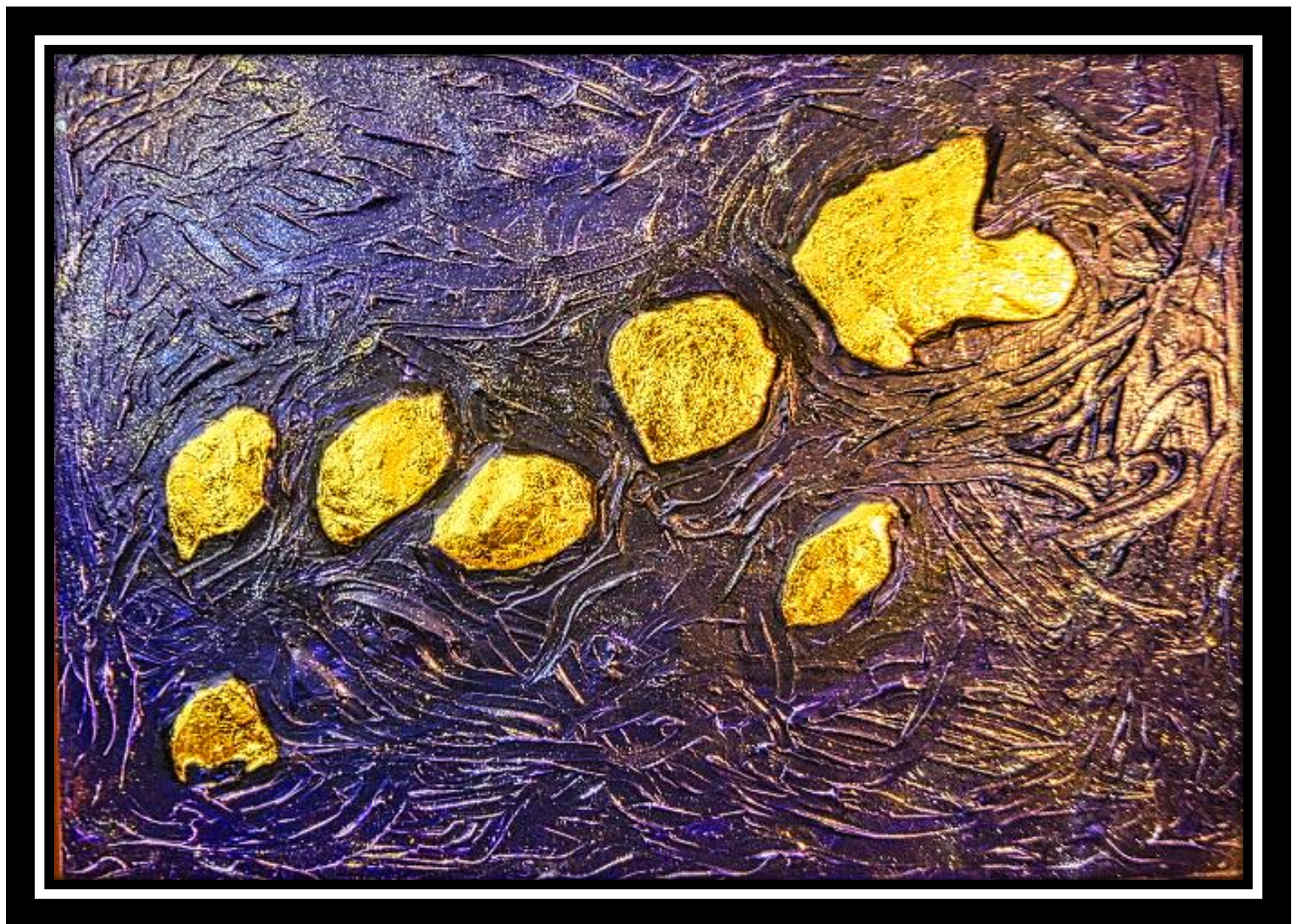
Sailing to Western Stars

\$1450

Larger archival acrylic 30 x 40 . On super resistant cradled birch wood panel.

With thoughts of Tennyson's Ulysses. Dramatic, stark blackness of space with indigo fading to purples in a shimmering field of distant stars. Fields of brilliant 24 karat gold. Demands strong lighting. Very heavy sculpted impasto surface

Professionally mounted in a modern floater frame ready to hang. Can be horizontal or vertical. See Trek to Aureus Lake for framing example.



Happy Hour III

\$1450

Larger archival acrylic 24 x 48 . On super stable cradled birch wood panel.

Joyous celebration in strong, dominant colors with great sense of movement. Reds, blues, yellows, oranges, metallic golds with a plethora of dense, complex fine structure detail. Sparkling, colorful light effect.

Professionally mounted in a modern floater frame ready to hang. Can be horizontal or vertical. See Trek to Aureus Lake for framing example.



Monica Mindful

\$950

**30 x 40 archival acrylic; resin coated and ready for hanging without frame.
Commission, Palm Beach, Florida; not currently available.**

Dynamically active oranges, reds and swirling yellows with extremely complex detail demanding closeup viewing.



Metallic Ephemerata

\$3550

48 x 96 large archival acrylic; resin coated and ready for hanging. Most stable cradled birch wood panel.

Striking warm toned metallic golds, coppers, bronzes in highly active explosion. Great complex detail demanding closeup viewing with light impasto effect.

Professionally mounted in a modern floater frame ready to hang. Can be horizontal or vertical. See Trek to Aureus Lake for framing example.



Night Firebird

\$950

30 x 40 archival acrylic; resin coated and ready for hanging.

**Striking, contrasting blacks, whites, golds in the movement of flight.
Moderate impasto and fine detail**

Professionally mounted in a modern floater frame. See Trek to Aureus Lake for framing example.



Tidepool III

\$950

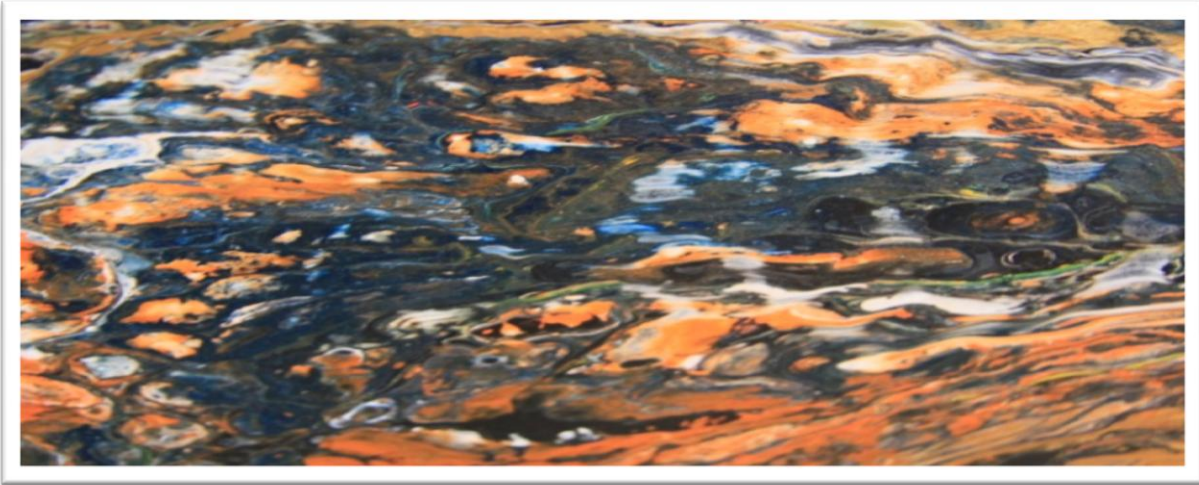
Archival acrylic 24 x 30

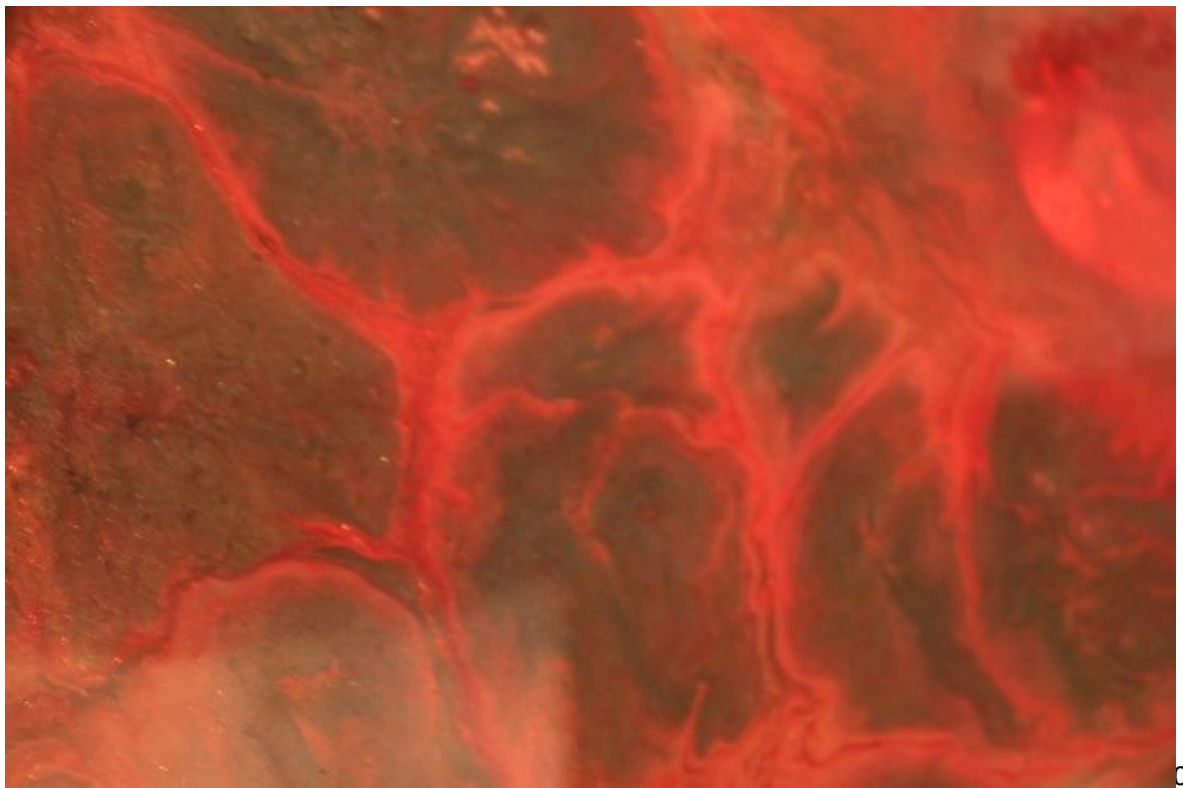
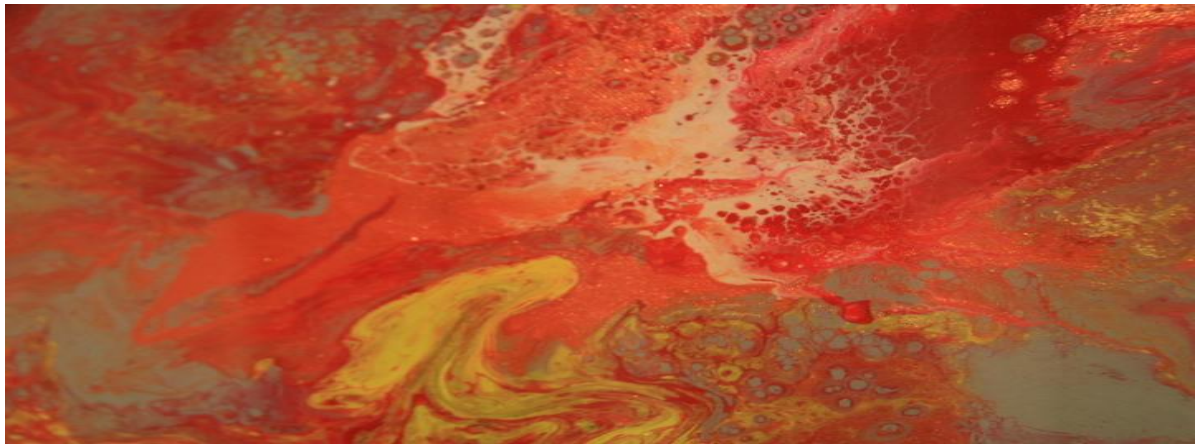
Complex swirls of blues with a touch of ocean green and whites. Partner in the Tidepool series. Some areas of dense detail.

Shown with professionally mounted floater frame ready for hanging.

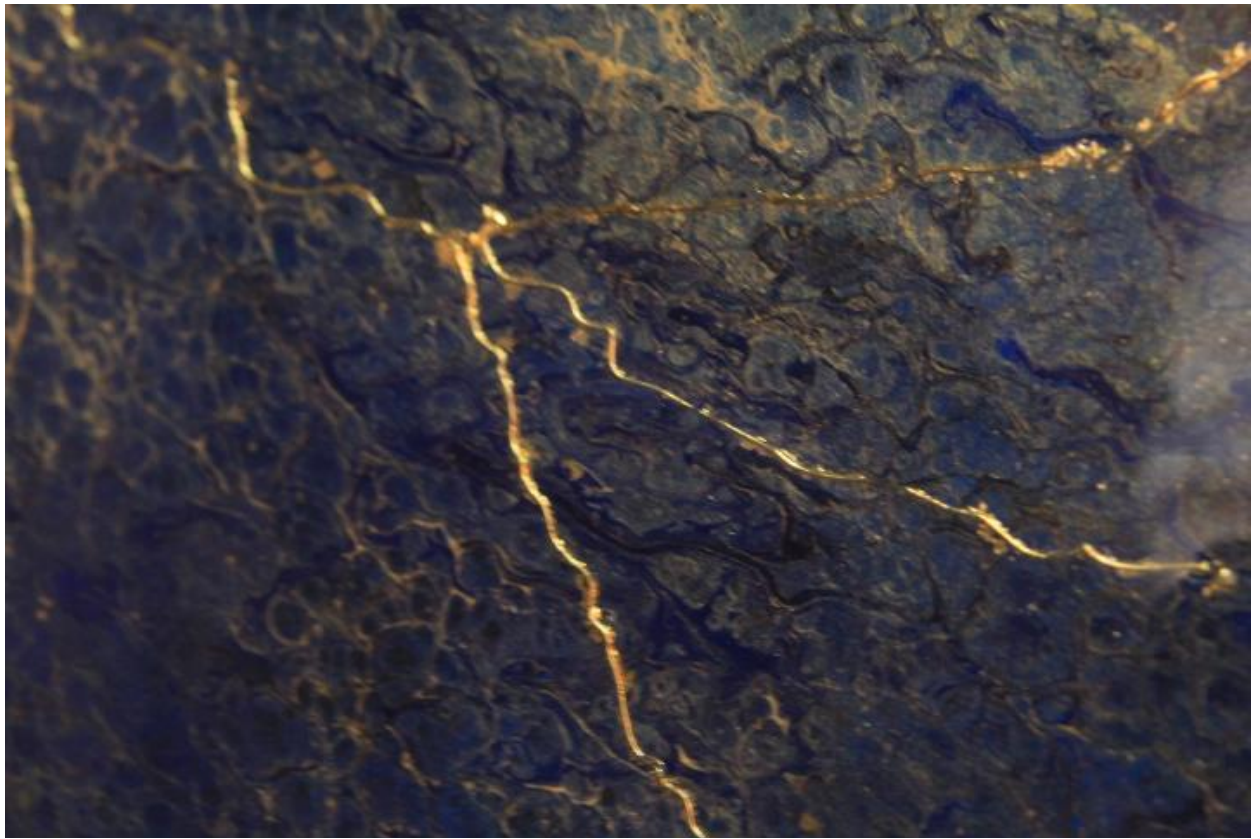
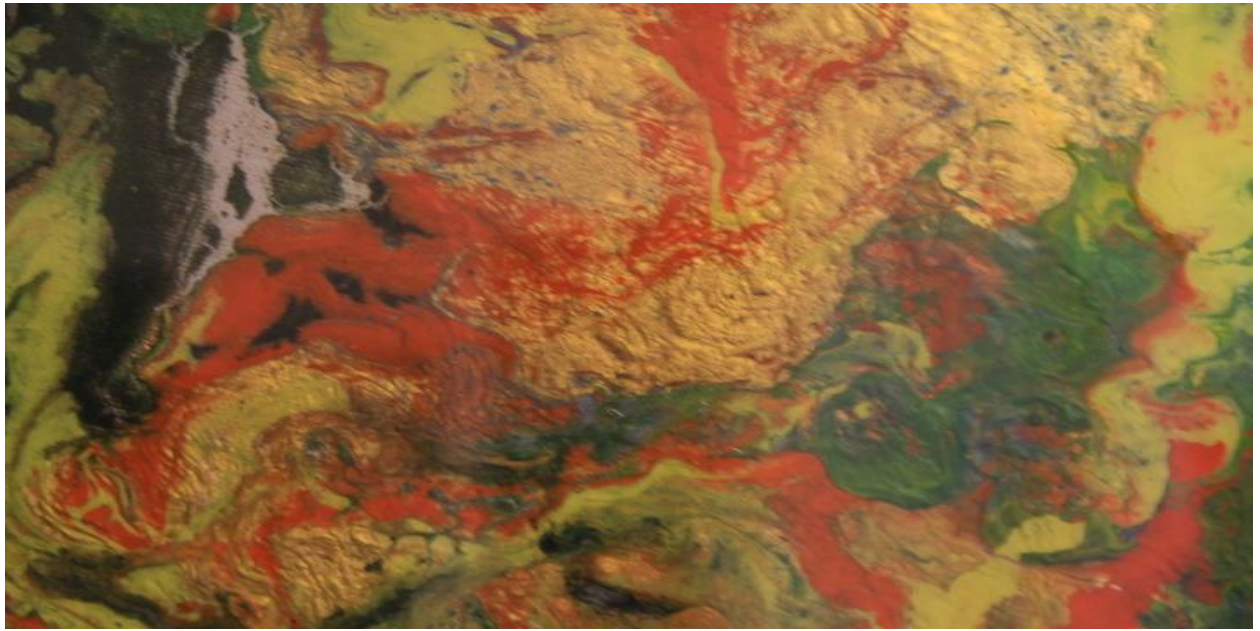


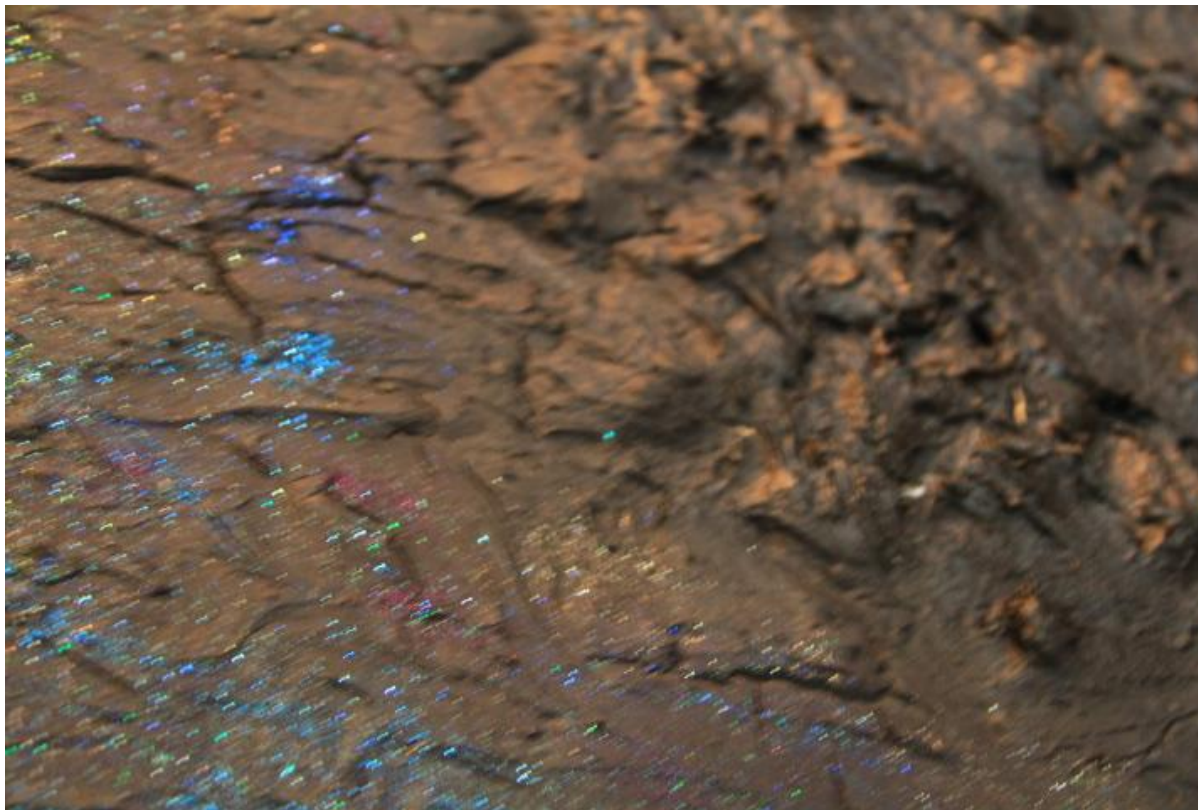
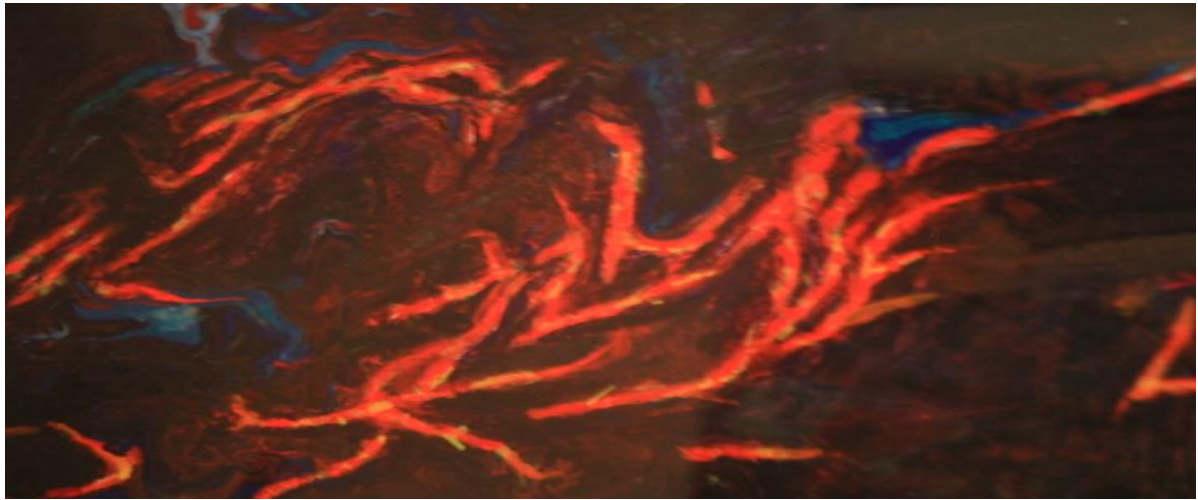
CLOSEUP DETAIL



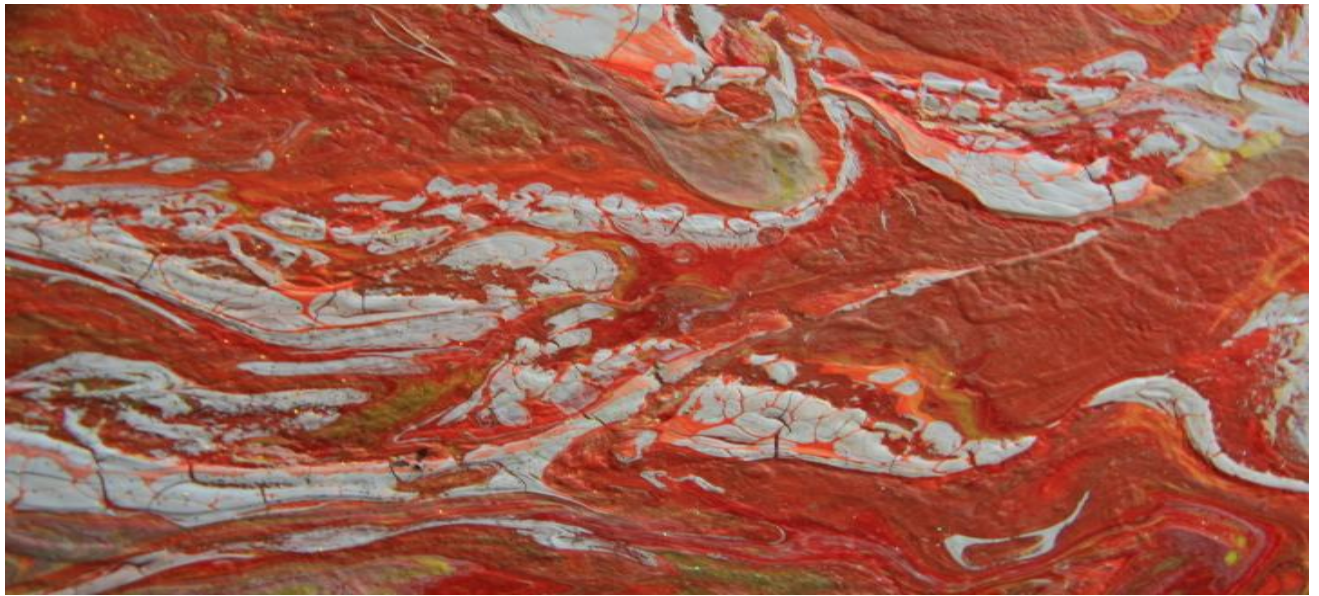


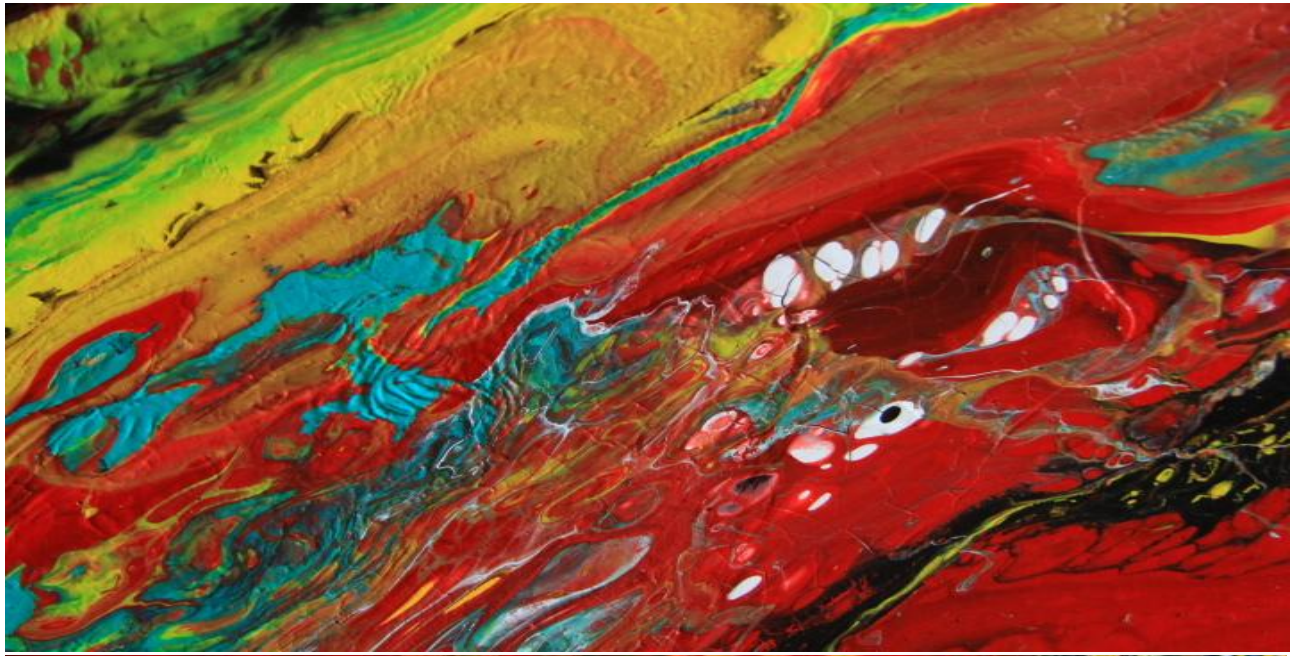


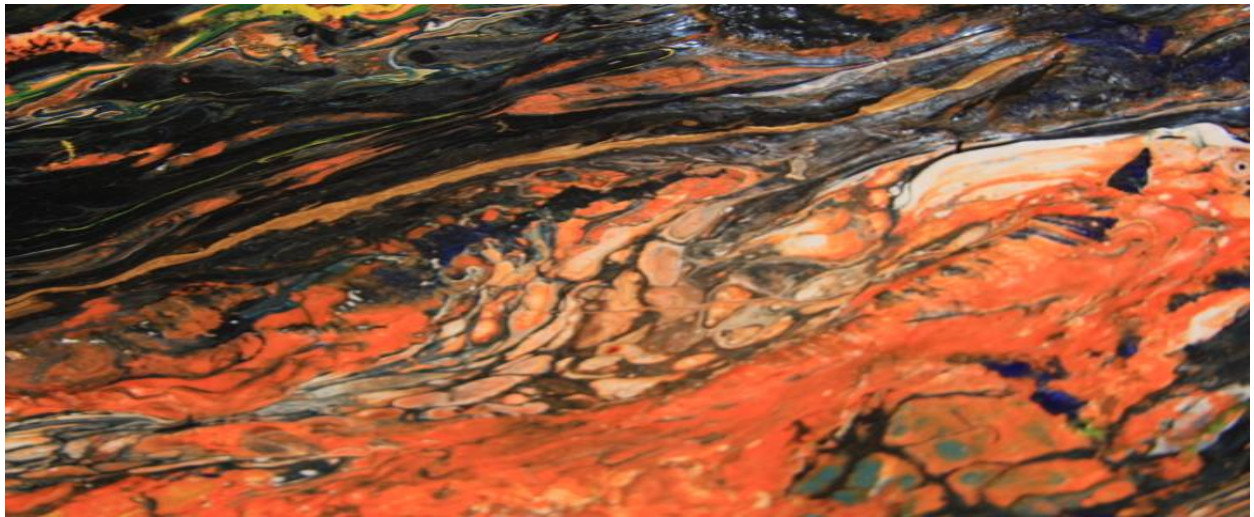


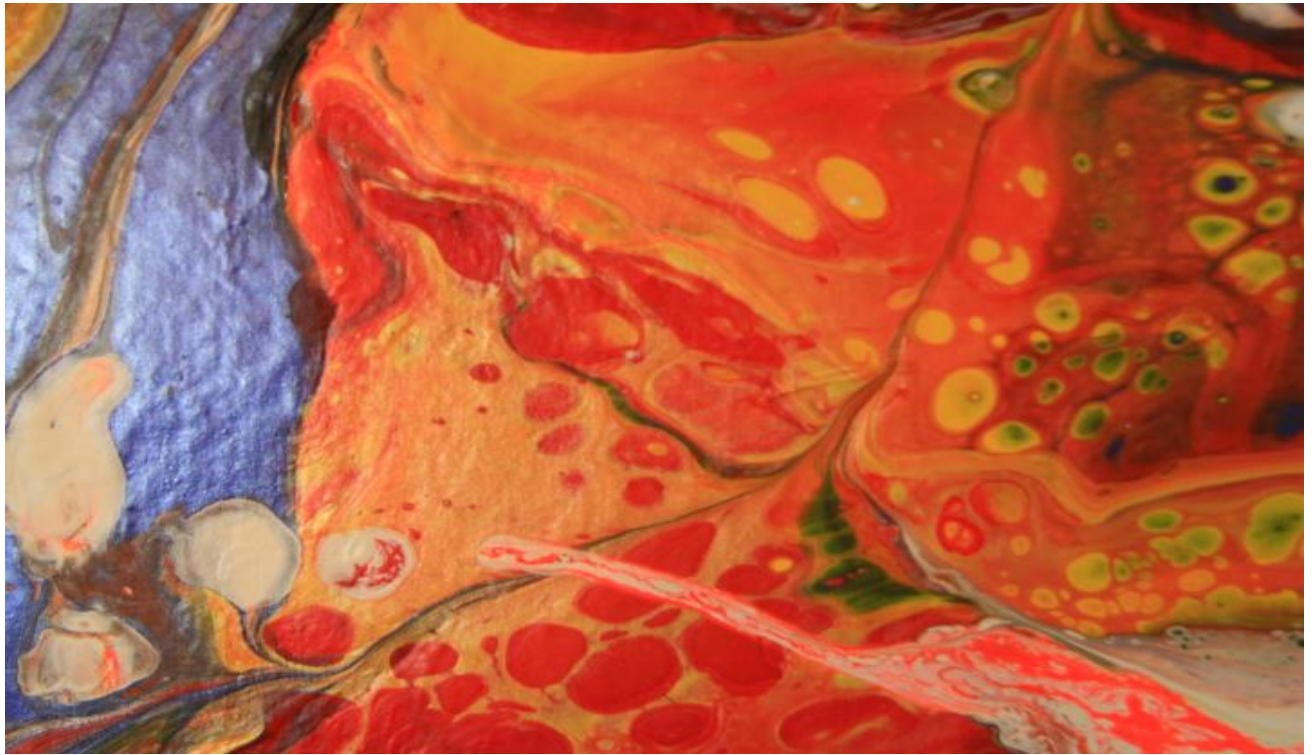














HANGINGS





