

Shoulder/Tibia Intraosseous Infusion

Intraosseous infusion can be life-saving for patients requiring fluid resuscitation where intravenous access is no longer available.

Creating the port for such an infusion is a highly technical skill that requires practice to ensure practitioner capability.

The PolyUnity Intraosseous Humerus Infusion Model: Provides critical hands-on learning opportunities for medical practitioners for a life-saving skill.

Pricing, Quality & Customization

We thrive to give our clients highly customizable simulation solutions which mimics their real life case scenarios, **at a price and quality that seriously enhances healthcare training accuracy and accessibility.**



PolyUnity

Together in Practice

Advanced Trauma Life Support

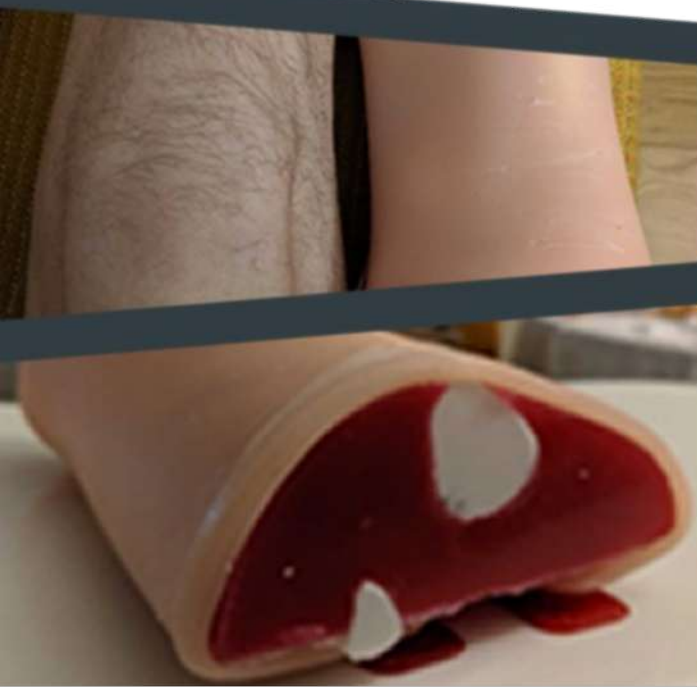
Complimentary "C"
Package



For inquiries on how we can help,
please contact:

clients@polyunity.com

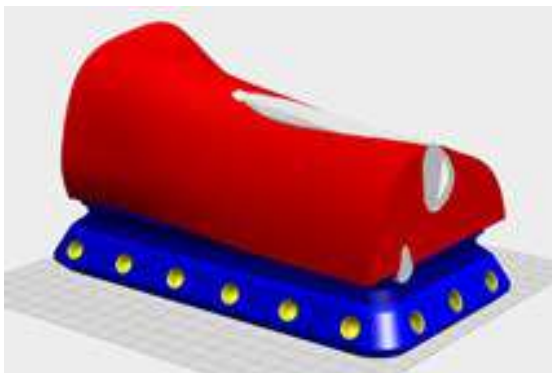
 PolyUnity





PolyUnity is reimagining access to a new global standard of healthcare education to enhance practice outcomes

The Advanced Trauma Life Support® Course (ATLS) is a world renowned training program that teaches acute life saving skills to medical providers.



PolyUnity Difference on ATLS

Our models have been designed in tandem with the most critical skill stations as recommended by experts. The PolyUnity ATLS “C” Package allows learners to get more time to practice critical trauma procedures on affordable, yet highly accurate 3D-printed medical task trainers.

PolyUnity ATLS C-Package

1. **Cricothyrotomy Model** with 3X replacement skins and membranes.
2. **Thoracostomy Model** with 3X replacement skins.
3. **Intraosseus Tibia Model** or **Intraosseus Humerus Model** with 3X replacement skins



Cricothyrotomy Model

Upper airway obstruction is a time sensitive, life-threatening situation. Immediate access to a stable airway is vital to patient survival. Our cricothyrotomy model has been tested at the **Canadian National Head and Neck Surgery—Emergency Procedures** course for two consecutive years.



Thoracostomy Model (Thick/Thin Rib Skin)

Your patient has arrived after a stab wound to the chest. They are hypotensive, have decreased breath sounds on the right, and chest x-ray shows a large hemothorax. You’ve replaced blood loss, but are you ready to place a chest tube? **The PolyUnity Thoracostomy Model** has been developed in conjunction with medical experts.