

May/June 2026 NEWSLETTER

The Atlanta Doberman Pinscher Club

The Atlanta Doberman Pinscher Club (ADPC) is a family of Georgians who are proud to be owned and loved by our Dobermans. Licensed by the American Kennel Club on November 1, 1972, the ADPC is a 501(c)(3) nonprofit Chapter Club of the Doberman Pinscher Club of America (DPCA).

Our purpose is to protect and promote the Doberman Pinscher. For well over four decades, the Atlanta Doberman Pinscher Club has strived to fulfill that mission through a variety of activities, including sponsoring specialty shows, conducting temperament testing, offering breed education programs and providing breeder referral resources.

Atlanta Doberman Pinscher Club

Email to mawils@earthlink.net

Email news, brags, birthdays, etc to surochester@aol.com



Join Us for our Zoom Meeting Tuesday, June 2, at 6:30 pm ET

President's Message

Hello to all our members and readers of our newsletter, which is graciously edited by Susan Rochester. Thank you, Susan! Also, special thanks goes out to Ann Wilson for sorting through and arranging all the news items to send to Susan. We greatly appreciate both of these ladies. Thank you.

Welcome to spring weather! Nice to see flowers blooming. Enjoy!

Heartfelt condolences go out to Rebecca Roter for the recent loss of her mother.

Club Specialty Shows and WAE in Perry

Be sure to join us for our two specialty shows on Friday, May 8, and Sunday, May 10, in conjunction with the Crossroads of Georgia Cluster at the Georgia National Fairgrounds in Perry, GA. We are also holding a WAE at the Fairgrounds on Saturday, May 9. Our Show Committee and WAE Committee need volunteers from the club to conduct these events—please reach out to them:

Doris Spivey, Show Chair: dspivey4101@gmail.com, (407) 920-1112

Vicki Sweeny, WAE Coordinator: vsweeny@pkknlaw.com, (770) 365-7768

Upcoming Meeting Schedule

We meet on the first Tuesday of the month, and members are always welcome to invite guests. The next several meetings are:

7/7/26, 6:30 PM Eastern, by Zoom

8/7/26, 7:00 PM in person — location to be announced

Your participation in our monthly meetings and other club events makes our club more productive and brings enjoyment to all of us. Thank you.

Deadline for July/Aug 2026 Newsletter is June 10.

We love to hear from all of you. Please be sure to email Ann Wilson all your brags and photos so she can organize content to send to Susan. We welcome information about your achievements with your dogs, as well as news about important family events and ideas for articles. We appreciate your support of the newsletter.

Of course, thank you to Membership Chair Ann Wilson for doing such a great job welcoming guests and new members.

Our club is growing, and with input and ideas from our members, we are headed in a very positive, productive direction. Thank you to all of our members and friends for your interest in the club and our fabulous breed.

Stay safe and always think good thoughts. If you have any ideas for club activities or initiatives, please don't hesitate to contact me, by email, phone call or text.

Respectfully submitted,

Pamela DeHetre, President
Atlanta Doberman Pinscher Club
(770) 329-3044
pamdehetre@peoplepc.com

BRAGS

Kathy Gresham:

Gresham's Coco Chanel In Red—1st Nosework trial February: 27th UKC in Jefferson, GA
 1st place in Containers
 2 4th place in Interiors
 3rd and 6th place in Exteriors
 We have only been together for 4 months.
 This girl really loves to work!



Pam Dehetre:

My dog **Pamelot's S.W.A.T.** finished his AKC Championship with a 5 point major the first day of the Louisville cluster.



Michele Labuz:

Finn and Mia (and Michele) have had a busy 2026, earning 18 new titles between them!

Pamelot's Optimist ("Finn") CD RM2 RAE BCAT SIA SCN SEN WAC RATS CGCA CGCU TKN ATT [UKC - ALCH UROC ROM UCD SE AN]

- NACSW - NW1 and NW2
- AKC Scent Work - SBN, SWN, SCA, SEA, and SIE
- Barn Hunt - 2 Master Qs

Whiskey Mac's They're Red Hot ("Mia") BN RI SIN SEN SBN

- AKC Scent Work - SCN, SEN, SIN, SBN, and SWN
- AKC Rally - RI
- AKC Obedience - BN
- UKC Obedience - PN and BN
- Barn Hunt - RATN & RATO



Pamelot's Zayne, picked up 5 minor points recently. Both handled by Christa Cook.
 Also, **Pamelot's Unforgettable**, BCAT, CGC, NTD, AKA Nova, co-owned by myself and owned by Danielle Ranieri, picked up a few more points toward her Conformation Championship. Handled by Linda Whitney. (no photos)

The Master Key to Your Dog's Bloodwork

Understanding Your Dog's Lab Results

theholisticcanine.us

Kidney Panel

- BUN
- Creatinine
- SDMA - *Early marker of kidney function*



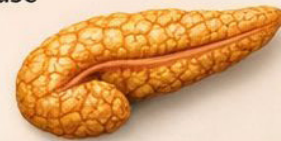
Liver Panel

- ALT
- ALP
- GGT
- Total Bilirubin



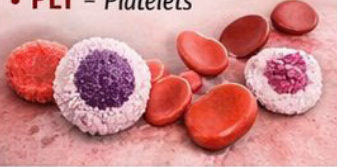
Pancreas

- Lipase
- Amylase



Complete Blood Count (CBC)

- WBC - *White Blood Cells*
- RBC - *Red Blood Cells*
- HCT - *Hematocrit*
- PLT - *Platelets*



Protein Profile

- Total Protein
- Albumin
- Globulins



Electrolytes

- Sodium (Na)
- Potassium (K)
- Chloride (Cl)



Understanding Your Dog's Labs:

- 1. Look for Patterns:**
Trends matter more than one abnormal result.
- 2. Compare to Baseline:**
Know your dog's normal values.
- 3. Ask "Why?":**
Discuss the cause, not just the number.

Always request a copy of the full lab report.



The Holistic Canine

For Education Only • Consult Your Veterinarian

Water — Fixing the Most Neglected Nutrient in Your Dog's Diet

dogfoodadvisor.com



Poor Water Quality Can Lead to Disease

Water is perhaps the most **neglected** nutrient in a dog's diet...

Which is why it may also be the most overlooked cause of **diarrhea** and soft stools in pets.

That's because...

Dogs frequently drink water that's **contaminated** with disease-causing **bacteria and parasites**... from sources found in:

- Stagnant puddles
- Community water bowls in dog parks
- Polluted streams and ponds

And keep in mind...

Dogs Pollute Their Own Drinking Water

Watch, up close, a dog drinking water -- you'll see how a dog contaminates its own drinking water.

Notice how the animal uses its tongue to scoop up the liquid... while germ-laden **saliva** drips back down into the bowl.

Loaded with Disease-Causing Germs

No matter the source...

Polluted drinking water can contain massive colonies of bacteria and other dangerous organisms.

For example...

Giardia is a disease-causing parasite that can be found in shared water bowls at dog parks, restaurants and other public places.

It can also be detected in suburban streams and ponds.

Unfortunately...

This common waterborne germ is capable of causing serious **digestive problems** in dogs. Even worse...

In a process known as **cross contamination**...

Giardia can **spread** from one water bowl to another... which can lead to the infection of other dogs.

What's more...

A dog's water bowl can also be contaminated with even more dangerous bacteria, such as

- E. coli
- Salmonella
- MRSA bacteria

More Germs in Every Ounce

In addition to water removed from the bowl by your dog, the unceasing process of evaporation is also working to empty it.

Unfortunately...

As water evaporates...

The disease-causing "soup" remaining in the bowl becomes **more concentrated**.

Which means...

There are now **more germs** in every ounce of water.

The polluted water is now more potent. More dangerous.

And thus...

More likely to cause diarrhea and soft stools in your dog.

Dilution Is the Solution

The easiest way to combat the steady increase of germs in the water is to continuously **dilute it**.

Simply **add water** to the bowl every time you get a chance. Which will make it less concentrated and weaken the "dose" of the germs.

Keep Your Dog Hydrated

As you'd expect...

A dog needs continuous access to water to lower the risk of dehydration.

Which means...

Clean, fresh water must be available on demand... anytime the animal's natural urge to drink calls for it.

Choose a Safe Water Bowl

The biggest **mistake** dog owners make is choosing a water bowl that's **too small...** for any dog.

That's because...

Small bowls make it impossible to keep the number of germs in the basin sufficiently diluted... and your dog adequately hydrated.

Our **best advice...**

Regardless of your dog's size...

Serve your pet's water from the **largest bowl** you can find... which helps dilute the germ concentration in the basin.

What's more...

You'll be taking advantage of the powerful dilution effect.

How to choose a dog bowl

We recommend choosing a bowl that's made from high quality **stainless steel or ceramic**. They're much easier to keep clean.

They hold up well over time and the better ones tend to resist corrosion and harsh dishwasher detergents.

Avoid bowls made from **plastic** for everyday use — although plastic is okay for short-term use such as walks or travel — and be careful with **older ceramic bowls** which may contain lead and lead glazes.

The Bottom Line

The following recommendations will help ensure your dog remains **hydrated** at all times...

1. Use an oversize bowl and keep it filled with fresh clean water
2. Change all water in the bowl at least twice a day
3. Wipe away any slimy biofilm from the inner surface of the bowl
4. Keep water bowls as clean as you keep your family's **glassware**
5. Never separate your dog from her drinking water... ever
6. Carry fresh water and serving bowls or water bottles with you when traveling

For Extra Safety

We also recommend placing your dog's water bowl in the **dishwasher** for a thorough scrubbing... at least **once a week**.

They come out sparkling clean and ready to serve up a refreshing healthy drink.



The original Doberman strain was nearly destroyed during the world war years from 1914 to 1918 in Germany because people could not afford to feed them. Doberman breeders sold their dogs to people from neutral countries hoping that they would be protected and it paid off, in 1921, 119 Dobermans were exhibited in a dog show.





proactive paws

VETERINARY FORMULATED NUTRITION



**EVERYDAY EXPOSURES SUCH AS LAWN
CHEMICALS, AIR POLLUTION, PROCESSED
PET FOODS, AND HOUSEHOLD TOXINS
MAY CONTRIBUTE TO CHRONIC
INFLAMMATION AND INCREASED
CANCER RISK.**

[sciencedirect.com/science/article/pii/S0147651325013508](https://www.sciencedirect.com/science/article/pii/S0147651325013508)

Plastics in Dog Food

A new peer reviewed study published in the journal Environmental Research found that commercial dry dog and cat foods contain tiny pieces of plastic (microplastics), and they were detected in every brand tested. Dog food had more than double the levels found in cat food, with dogs exposed to about 9 particles per 5 grams, compared to about 4 per 5 grams in cat food. The plastics included common materials such as PET, polyethylene, and polypropylene, likely originating from raw ingredients, processing equipment, and packaging. Researchers suggest dogs may face greater whole body exposure due to higher intake, while cats may be more prone to chronic gut irritation.

If you are looking to support gut health, certain probiotic strains like *Saccharomyces boulardii* and *Lactobacillus rhamnosus* are among the most studied. They have been shown to support the gut barrier, help balance the microbiome, and reduce inflammation, especially in cases like acute diarrhea.

For more information on how to help limit your pet's microplastic exposure, visit www.ProactivePaws.com



**NEW PEER-REVIEWED STUDY
FOUND MICROPLASTICS IN
EVERY TESTED KIBBLE: ABOUT
9 TINY PIECES OF PLASTIC PER
TEASPOON OF DOG FOOD. ALL
POPULAR BRANDS SHOWED
CONTAMINATION.**

doi.org/10.1016/j.envres.2026.124477



A Doberman, a German Shepherd and a Rottweiler are in a bar having drinks. The Rottie says "God told me when he made me that he made the strongest and most powerful of all dogs." The German Shepherd looks at him, laughs and responds: "God told me when he made me that he made the most faithful, noble and intelligent of all dogs." The Doberman looks at the two of them, leans back in his chair, finishes his drink and says in a low voice: "I don't remember saying any of that nonsense."



5 Ways Your Dog Can Benefit from **COLOSTRUM**

- 1 Strengthens defenses against **infections**
- 2 Supports **intestinal lining repair**
- 3 Helps reduce **joint, skin, and digestive inflammation**
- 4 Promotes **tissue repair** and **muscle recovery**
- 5 Supports beneficial **gut bacteria**



bark&whiskers

Can Dogs Eat Eggs? The Truth About Eggs For Dogs

dogsnaturallymagazine.com

Can dogs eat eggs? It's a controversial topic – especially when it comes to raw eggs for dogs. People worry about problems like salmonella poisoning or even a biotin deficiency from feeding eggs to dogs.

So ... is it safe to give a dog eggs? Let's take a closer look.

Raw Eggs For Dogs

Giving a dog raw eggs or egg shells isn't exactly a traditional dog food ... but eggs have some amazing health benefits for dogs. They're a complete food source. After all, they have all the nutrients a baby chick needs to grow inside the egg until it hatches into a chicken. Here are some of the important nutrients in eggs.

Protein

Eggs are one of the most complete sources available of amino acids, the building blocks of protein. By adding eggs to your dog's meals, you're boosting the protein in his diet.

Vitamins And Minerals

Eggs are a nutritional powerhouse, with a wide range of nutrients, such as ...

- Vitamin A
- Folate
- Riboflavin
- Iron
- Vitamin B12
- Selenium
- Antioxidants lutein and zeaxanthin
- Fatty acids

Are Eggs A Salmonella Risk For Dogs?

While you might worry that when dogs eat raw eggs or undercooked eggs it brings the risk of salmonella, dogs have powerful digestive juices that mean they can easily handle salmonella and other bacteria in raw foods. But there are a few things you want to consider when choosing your eggs, to keep the bacterial levels normal.

The health of the hen laying the eggs is very important. Ideally, you want your dog to eat eggs from organic, pasture-raised healthy chickens.

Can Eggs Cause A Biotin Deficiency In Dogs?

Biotin is one of the B vitamins. It's important for your dog's cellular growth, fatty acid metabolism, and his healthy skin and coat. Egg whites contain avidin, a biotin inhibitor. But it would take eating an extraordinary amount of eggs to create a deficiency.

Egg yolks are very high in biotin, so if you feed the entire egg, there are few worries. When you feed a complete fresh diet there are other good sources of biotin in his diet as well. Liver is a particularly good source.

Are Eggs Safe For Dogs?

Yes, eggs are very safe for dogs. Dogs can safely eat raw eggs as their wild cousins like wolves, coyotes and foxes do. Wild dogs grab eggs out of nests and eat them raw, shell and all. And that's the best way to feed them to your dog.

Are Eggs Good For Dogs?

Eggs are an excellent food for dogs. Eggs are a cheap source of protein and they're easy to buy. Raw eggs are one of the most complete and nutritious foods you can give dogs on a raw food diet.

Can I Give My Dog A Raw Egg Every Day?

Eggs are rich in avidin, which inhibits the absorption of biotin, a B vitamin. However egg yolks are a very good source of biotin, so you can safely feed your dog a raw egg every day. Cooking will also destroy the avidin for extra safety.

EGGGS: THE POWERFUL, UNDERUSED, UNTAPPED TOOL FOR CANINE NUTRITION

STOP THE CONFUSION, START THE LEVERAGE

THE HOLISTIC CANINE

UNDERSTANDING THE WHOLE EGG

THE METABOLIC DRIVER: YOLK

- Choline
- Vitamin A
- Vitamin D
- Vitamin E
- Vitamin K
- Essential Fatty Acids
- Trace Minerals (e.g., Selenium)

THE STRUCTURAL SOURCE: WHITE

- Complete Protein
- Essential Amino Acids

theholisticcanine.us

NAVIGATING THE AVIDIN MYTH

RAW EGG

Avidin binds Biotin

YOLK NATURALLY CONTAINS BIOTIN TO COMPENSATE WHEN WHOLE EGG IS FED

THE SOLUTION

RAW	VS	COOKED
✓ Maintains Native Protein Structure		✓ Denatures Avidin
✓ Appropriate for Whole Egg		✓ Enhances Biotin Availability

COMMON MISTAKES TO AVOID

- ⊗ Feeding Only Whites
- ⊗ Occasional vs Strategic Use
- ⊗ Ignoring Nutrient Contribution
- ⊗ Treating as Topper

Bone Broth Gummies for Dogs



Don't boil

1. Warm up bone broth

Don't boil



2. Whisk in gelatin

2 tbsp unflavored gelatin

2. Whisk in gelatin

2 tbsp unflavored gelatin



3. Pour into mold

Bone shapes work best



4. Chill until firm

2-3 hours in fridge



Ingredients:

- 2 cups unsalted bone broth
- 2 tbsp unflavored gelatin



Use **LOW-SODIUM** bone broth only!
(Store-bought can be way too saity)