

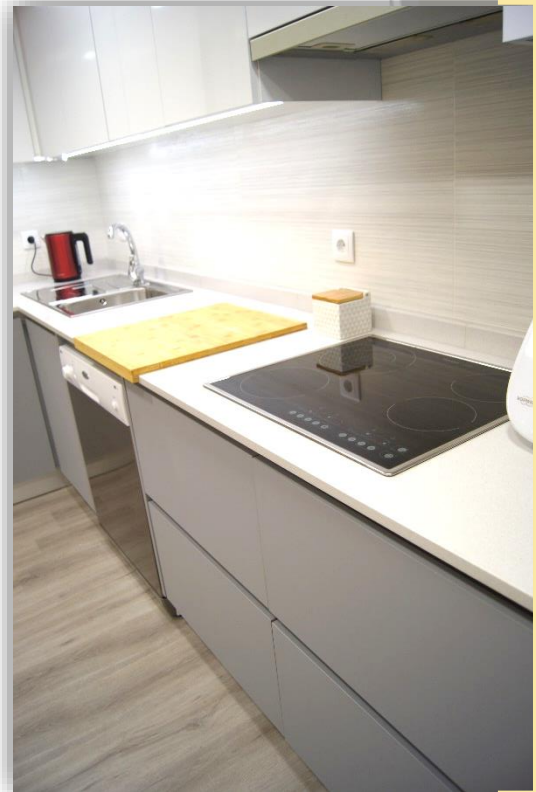
**CATÁLOGO**

# Índice

COZINHAS	3
ARMÁRIOS COM FECHO	17
FRENTES PORTAS ABRIR	18
ROUPEIROS	19
CASA DE BANHO	24
PORTAS DE CORRER	26
PORTAS	29
MOBILIA DE QUARTO	32
MOBILIA DE SALA	35
ESCADAS	36
RIPADOS	38
MOBILIARIO DE LOJA	40



# COZINHAS









































## ARMÁRIOS COM FECHO





## FRENTES PORTAS ABRIR





# ROUPEIROS













## CASA DE BANHO



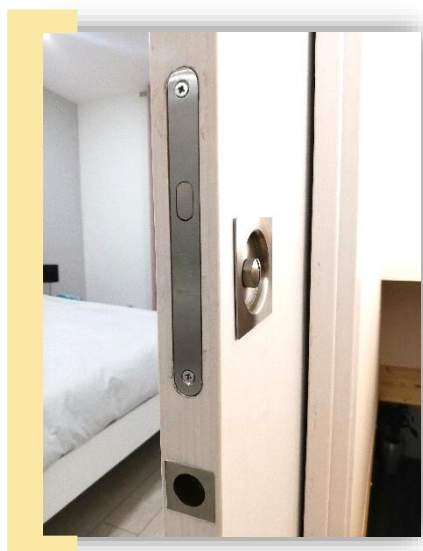


## PORTAS DE CORRER

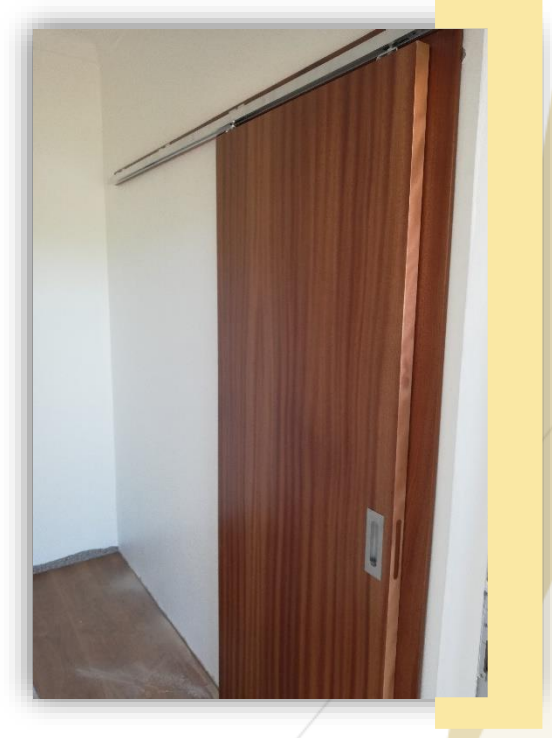
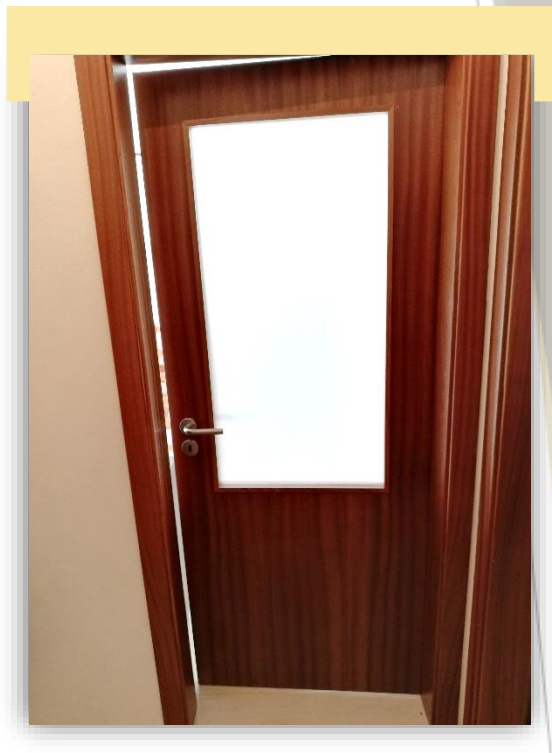




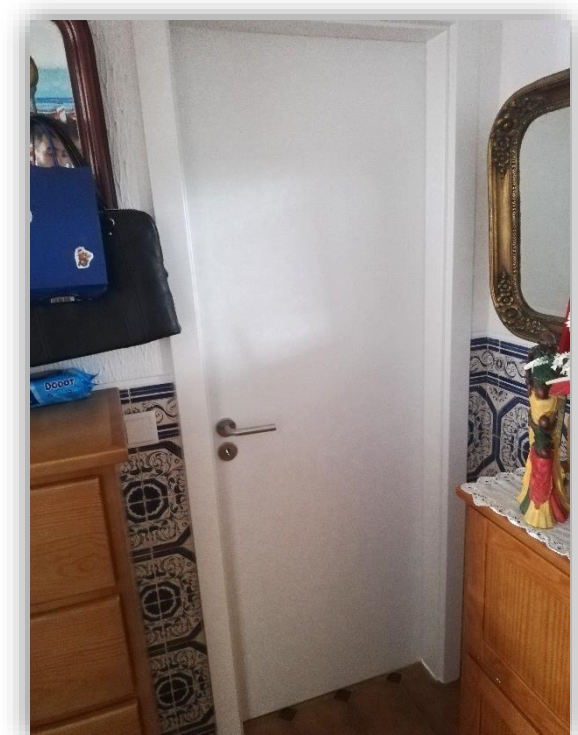
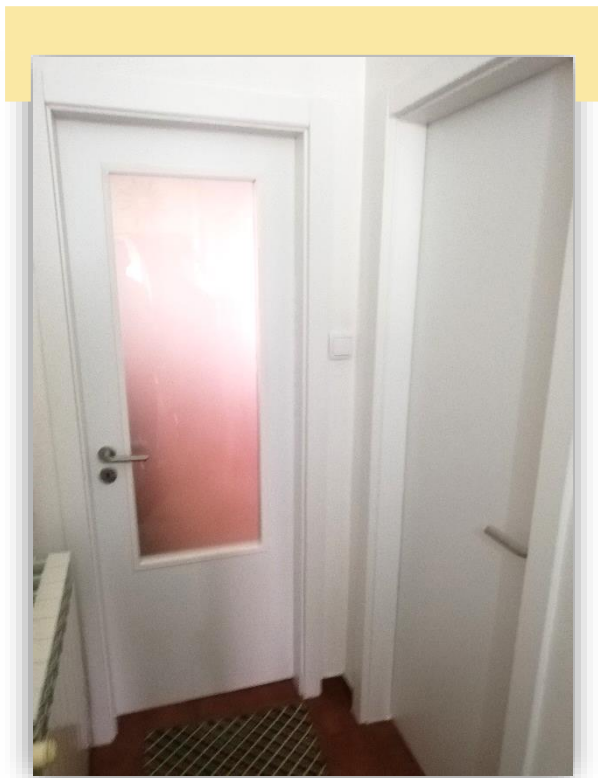


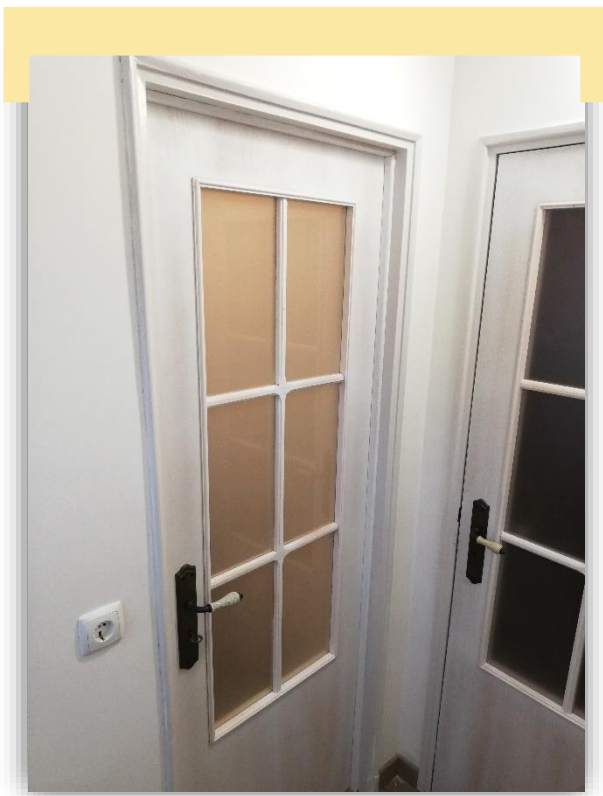


# PORTAS









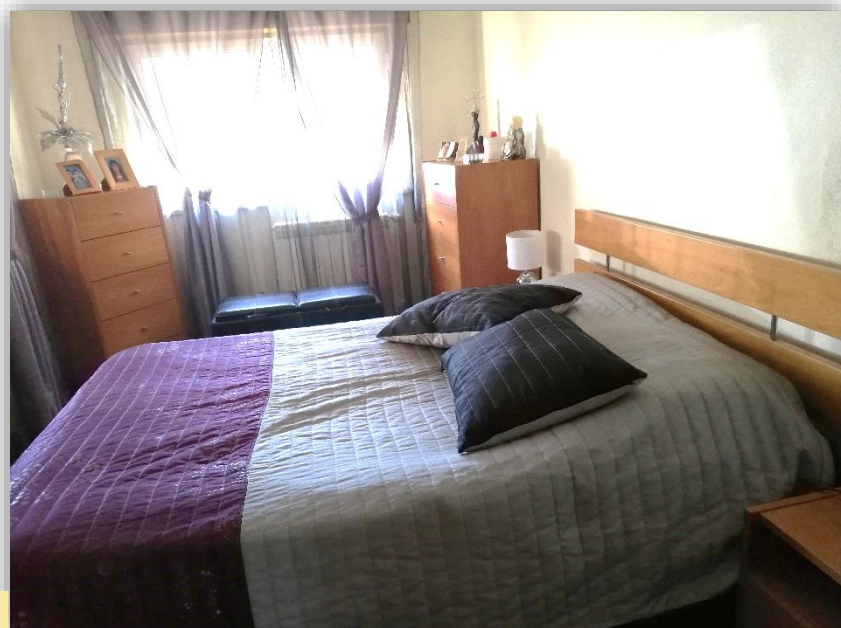


# MOBILIA DE QUARTO











## MOBILIA DE SALA



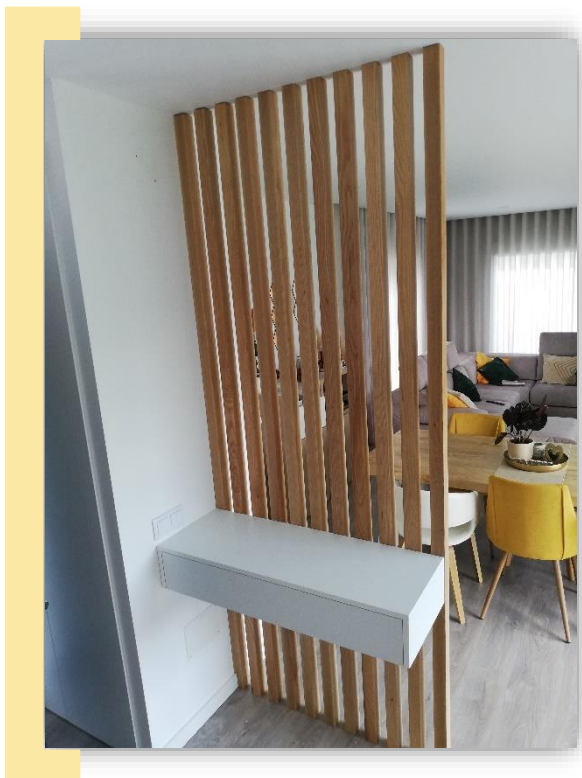


# ESCADAS





# RIPADOS







# MOBILIARIO DE LOJA

