

How to get there

By train to Carshalton Beeches Station **Sutton-West Croydon** line.

Turn left out of the station, then left again on to Beeches Avenue, which becomes Woodmansterne Road. Oaks Park is 1 mile from the station. Use Start 2 at Fox Hole Corner.

By bus Ring 0845 300 7000 (TfL London Buses) or 020 7222 1234 (TfL 24hr travel information for local guides/times. The map above shows the nearest stops.

127 Tooting-Purley Join walk from Woodcote Park Ave.

154 Morden-West Croydon Corner of Stanley Park Rd.

463 Mitcham-Coulsdon Operates Mondays to Saturdays during daytimes. Join walk from Clockhouse or Woodcote Park Avenue / Little Woodcote Lane.

166 Coulsdon-Banstead Route extends to Epsom Hospital Monday to Saturday during daytime. Stops in Carshalton Road, opposite the entrance to Mayfield Lavender. Join walk from Start 1 at Oaks Park Cafe.

S3 Worcester Park Station-Sutton Hospital Operates Monday to Saturday during daytime. Join walk from Fairlawn Road.

S4 St. Helier Station-Roundshaw Operates Monday to Saturday during daytime. Alight at the junction of The Warren and Woodmansterne Road. Join walk from Start 2 at Fox Hole Corner.

Car parking At Oaks Park (see map). Postcode for Oaks Park is SM7 3BA.



Other walks nearby

The Downslands Circular Walk starts in Coulsdon. Leaflets are available from the Downslands Countryside management Project (DCMP) on 01737 737700.

The **London Loop** is a walking version of the M25! The London Outer Orbital Path (LOOP) is a 150 mile walking route around Greater London. It is divided into 24 sections easily accessible by public transport. It is a fascinating journey around the edge of London, down hidden alleyways through residential areas, along rivers and canals, across public parks, nature reserves, woods, occasional enclaves of farmland and surprisingly few roads, with many unexpected gems along the way.

The Sutton Countryside Walk follows part of London Loop Section 6.

For more information on the Loop visit www.tfl.gov.uk and www.walklondon.org.uk or contact the Downslands Project on 01737 737700.

Oaks Park Nature Trail is a 2 mile route through the formal gardens, meadows and woodland of The Oaks Park. Allow 1½ - 2 hours. Leaflets are available from Sutton Libraries, Environment and Leisure Offices, Denmark Road, Carshalton, and The Oaks Park Cafe.

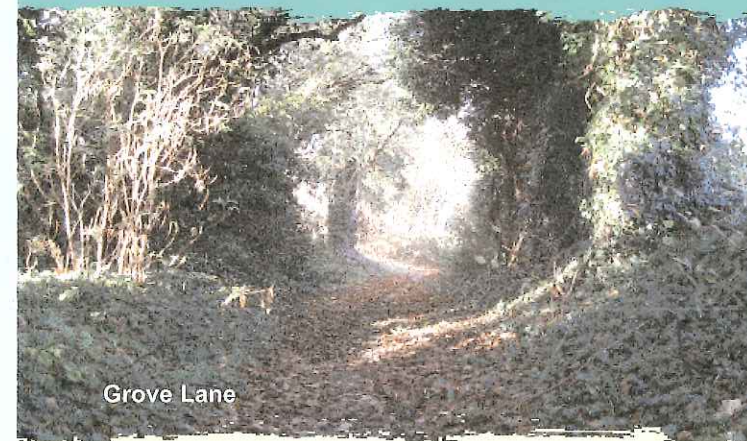
The **Wandle-Oaks Link** walk joins the **Wandle Trail** and the **Oaks Park Nature Trail**, mostly on hard surfaces and marked with the Wandle-Oaks Link logo. Distance just over 2 miles.

Volunteers are always welcome!

Through the **Downlands Countryside Management Project** local people get involved in practical work to improve the countryside and landscape of NE Surrey and South London's urban fringe. New volunteers always welcome. Ring 01737 737700.

Sutton Nature Conservation Volunteers carry out nature conservation projects such as hedgelaying, coppicing, glade creation, and survey work in LB Sutton. New volunteers are always welcome - no previous experience needed. Ring 020 8770 5821.

Come out and see the countryside on your doorstep



Grove Lane

The Countryside Code

- Be safe, plan ahead and follow any signs
- Leave gates and property as you find them
- Protect plants and animals and take your litter home
- Keep dogs under close control
- Consider other people

The **London Borough of Sutton and Downslands Countryside Management Project** have established this walk to encourage more use of the countryside for informal recreation. If you have any comments on this walk please contact DCMP on 01737 737700.

Friends of Oaks Park

The park has a thriving Friends group of voluntary users of the park. Constituted in 1997, the group works in partnership with the Council to promote the park and to preserve its historic heritage. For more information visit the Friends' website: www.friendsofoakspark.org.uk

Sutton Countryside Walk

starting from Oaks Park



Lavender Field

From Oaks Park, visit farmland and woodland, discover countryside views and wildlife, and enjoy the open air



Sutton Countryside Walk

Oaks Park

The Oaks name is derived from the Lambert family, who owned the land and a grove of trees known as Lambert's Oaks. The Oaks mansion, which stood on the site (look for the chalk outline) and features in a number of interpretation boards in the park, was built in the 1750s to the design of Robert Taylor for Sir Francis Gosling, founder of Goslings Bank.

It was acquired and extended by John Burgoyne, son-in-law of the 11th Earl of Derby, to include a magnificent ballroom of 42 feet by 21 feet. Burgoyne had a distinguished career in the Army, rising to the rank of General. He was also an MP and an accomplished writer. When John gave up the lease it was taken up by his nephew Lord Edward Smith Stanley, later 12th Earl of Derby, who subsequently bought the estate in 1778. In 1774 a Fête Champêtre (rural festival) was held at The Oaks to celebrate the Earl of Derby's forthcoming marriage to Lady Betty Hamilton.

The 12th Earl created two famous horse races: the Oaks, first run in 1779, and the Derby in 1780. It is said that the name of the Derby was decided as a result of the flip of a coin between the Earl and Sir Charles Bunbury, first Steward of the Jockey Club. During its heyday the house saw many distinguished guests, including royalty, and the Earl employed Robert Adam to further enlarge it.

The Earl sold The Oaks shortly before his death in 1834. The 19th century owners made many changes but it remained a family home until the First World War. After this it was a home for women with epilepsy until bought by Carshalton Urban District Council in 1933. The brick outbuildings then housed Basque refugee children from the Spanish Civil War. During the Second World War the estate saw Home Guard and other military use - some bombs fell nearby but did little damage. After the war the house was neglected and then demolished.

During the early 1970s a golf course was constructed on the northern half of the original park land. The Oaks Sports Centre has become a thriving concern. The perimeter walk is a valuable haven for wildlife and nature conservation. The grounds are managed by London Borough of Sutton which has won several Green Flag awards for its management as well as a gold and a silver medal in the London In Bloom competition.

Oaks Park Grotto



Lady's Bedstraw

Old Lodge Farm

Old Lodge Farm is now managed by the Downlands Countryside Management Project which is hoping to bring the farm back to life. This time, instead of being a dairy farm, it will be managed for wildlife with the help of grazing animals. These animals will eventually return the grassland to a more natural state suitable for a host of wildlife.

Old Lodge Farm



Great Spotted Woodpecker

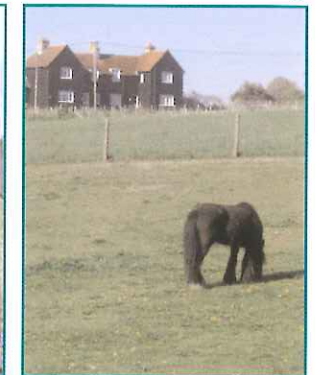
Mayfield Lavender

Mayfield Lavender has been working with the Bioregional Development Group to re-establish lavender oil production. This is the area where the traditional lavender industry thrived up until the early 1900s, and it is believed that lavender was actually grown on these same fields until the First World War.

Mayfield Lavender



Smallholding



Little Woodcote Estate and Smallholdings

The name of Little Woodcote dates back to the 18th century, when there were 100 acres of farm and park land around Woodcote Lodge. The oldest known habitation in the Woodcote area is a Bronze Age fortified village (2300 to 700BC), next to the smallholdings, north of Oaks Park.

The smallholdings were formed in 1925 by Surrey County Council, as a result of Council policy to help soldiers returning from the First World War, and other members of the public, take the first steps to becoming farmers in their own right.



Common Blue Butterfly on Beech leaves