

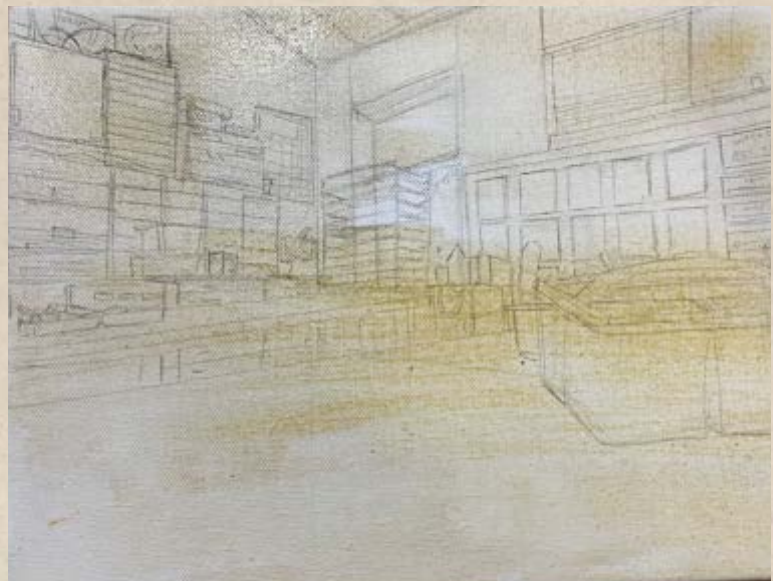
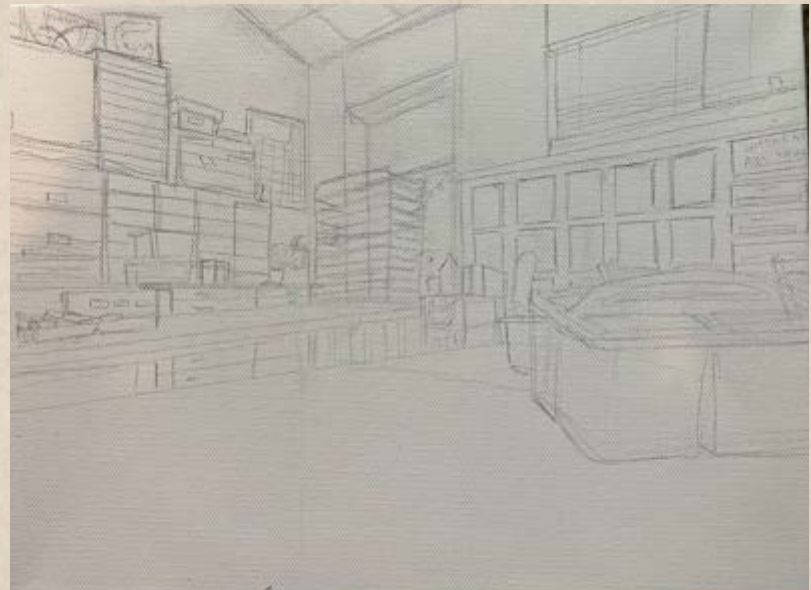






Reference photo taken by me 3.9.23

Sketch



yellow wash



Small brushstrokes for finer details



White acrylic on dried paint



darkening edges  
to emphasize  
formal point



building up layers  
of color





# Fully Inked Sketch

Thicker lineart on edges



Layering watercolor process



White acrylic highlights  
for plastic shine



Thumbnail sketches

Reference photos taken by me 10.1.22





# Sketch



Thumbnail sketches



Reference photo taken by me 2.13.23



3D hand method

Graphite rendering



Reference photos from internet



Accessed: 3docean 2.6.23  
<https://3docean.net/item/japanese-classroom/34034042>

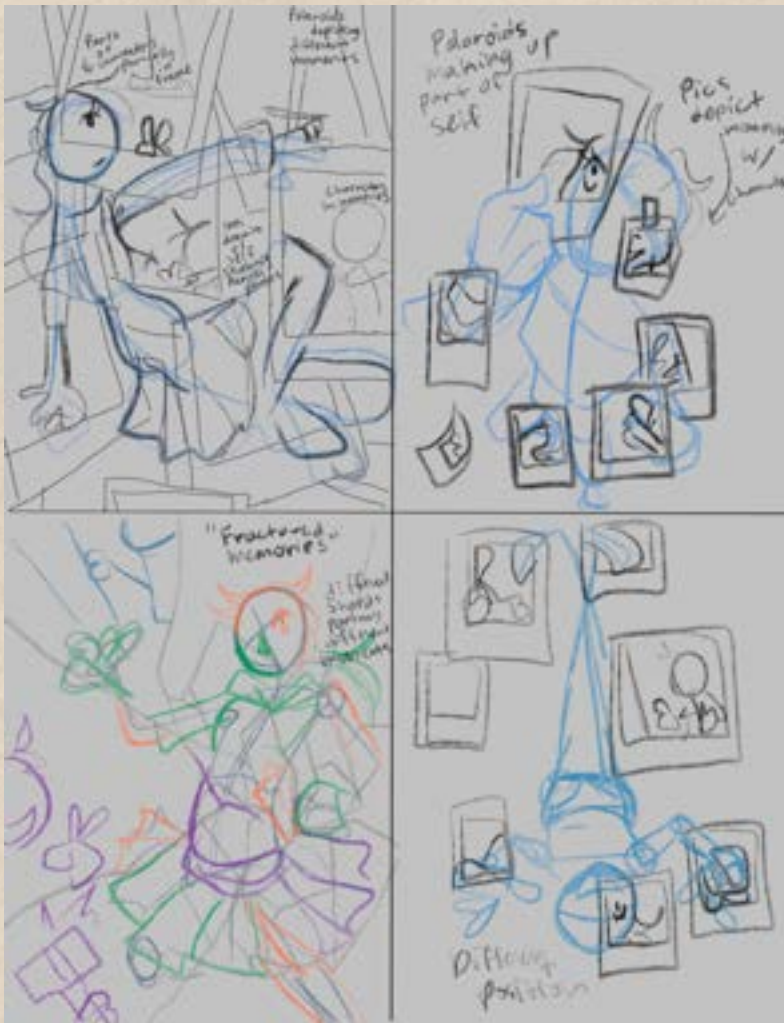
Accessed: bhphotovideo 1.30.23  
<https://www.bhphotovideo.com/explora/photography/tips-and-solutions/tips-tidbits-shooting-landscape-fisheye-lenses>



Prismacolor on watercolor







# Sketch



Focal point



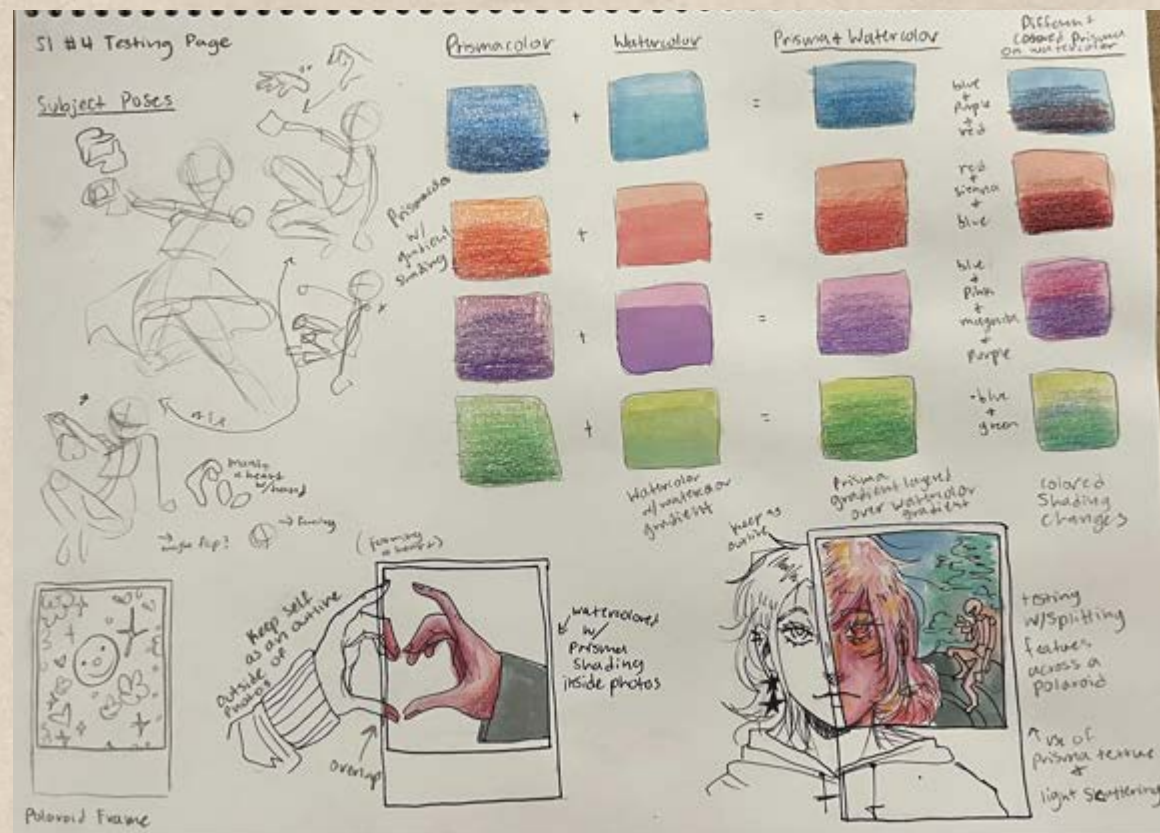
Prismacolor on watercolor



Watercolor vignette and shadows under photographs



Thumbnail and composition sketches



Material testing

Reference photo for hand taken by me 11.30.22





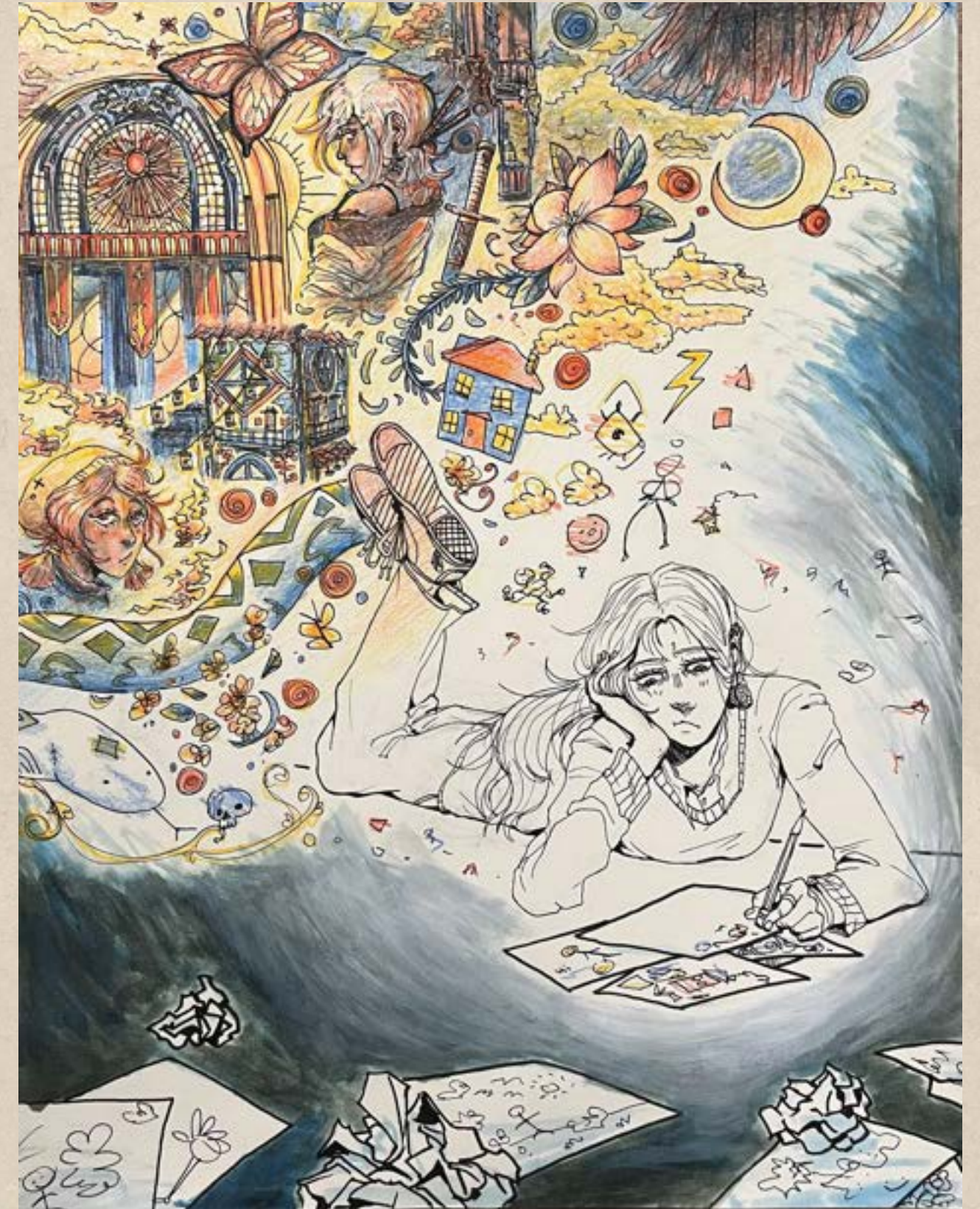
# Before Revision



Layered white acrylic to lighten gradient



# After Revision





# Sketch

Layered watercolor with prisma outline and shading



Shadows of blue watercolor and colored pencil



Shading pots with prisma color for earthy texture

Material testing in sketchbook







Cut out scraps of paper glued on for 3D leaves and plants, rendered with colored pencil



Watercolor gradient lighting swirls



Oil pastel rendered leaves stuck on edges with foam tape for 3D foreground

