

IHCL


TAJ
FORT AGUADA
RESORT & SPA
GOA


TAJ
HOLIDAY VILLAGE
RESORT & SPA
GOA

OVERVIEW

Taj Fort Aguada Resort & Spa & Taj Holiday Village Resort & Spa, Goa

Proximity to Airport & Railway Station:

- Airport – 39 kms / 60 – 80 mins.
- Thivim Railway Station: 24 kms / 45 mins.
- Karmali Railway Station: 24 kms / 45 kms.

Beaches:

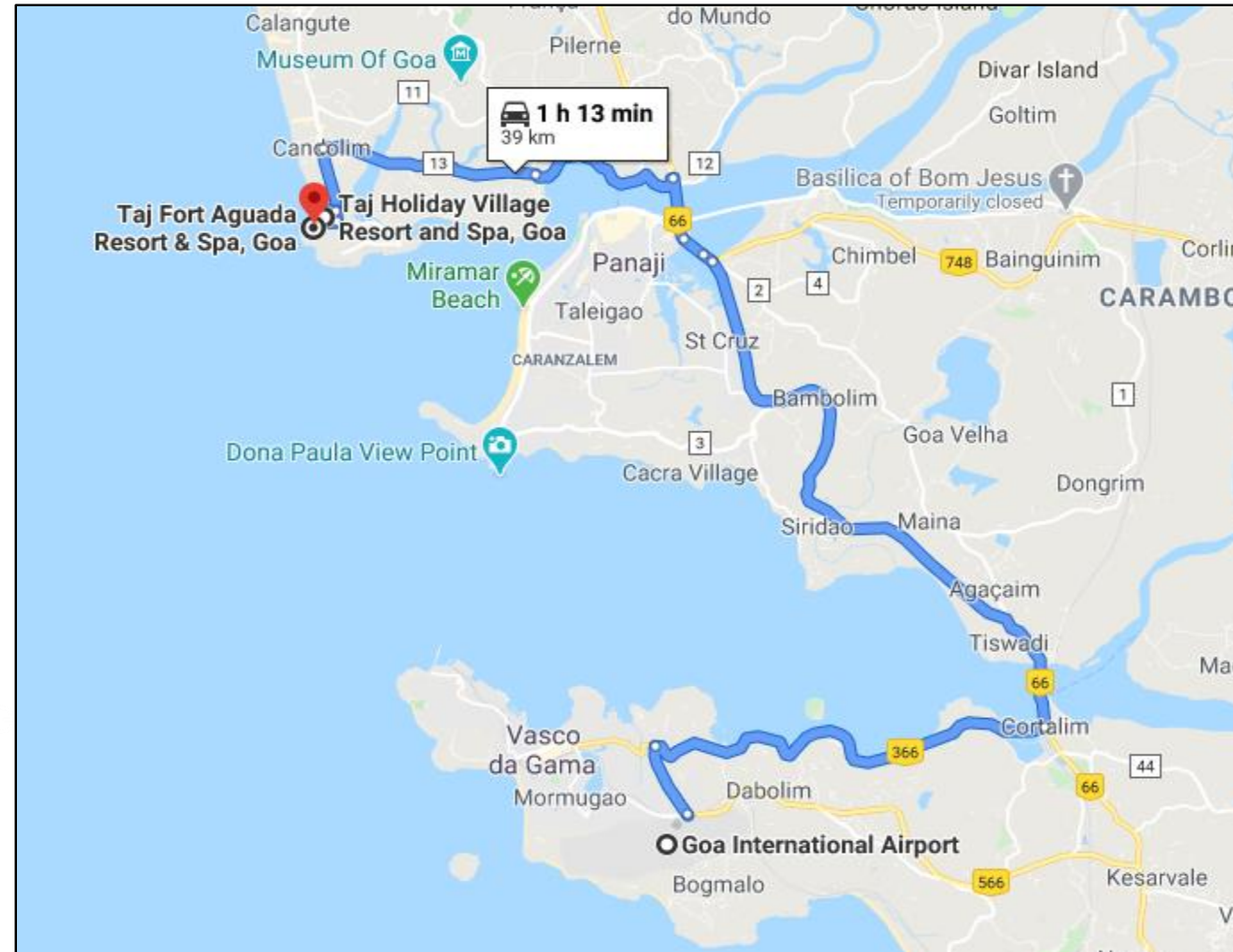
- Sinquerim & Candolim: 0 kms.
- Calangute Beach: 05 kms / 10 mins.
- Baga Beach: 08 kms / 15 mins.

Night Spots/Clubs/Restaurants:

- Cohiba Bar & Kitchen: 0.5 km / 05 mins.
- Sinq Club: 0.5 km / 05 mins.
- The Lazy Goose Restaurant: 3.5 kms / 08 mins.
- Anjuna Flea Market: 13 kms / 30 mins.
- Thalassa: 15.5 kms / 35 mins.

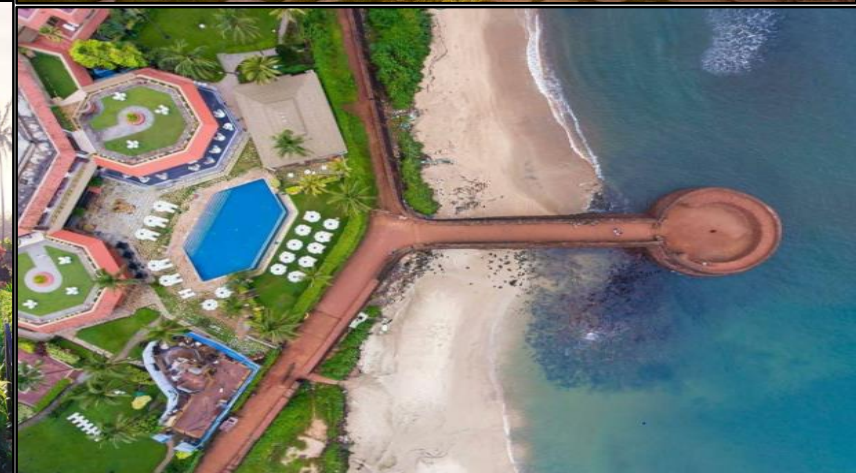
Shopping:

- Calangute Market: 05 kms / 10 mins.
- Panjim Market: 14 kms / 30 mins.



Taj Fort Aguada Resort & Spa, Goa

Built on the ramparts of a 16th century Portuguese Fortress situated along Sinqerim Beach and is a tropical paradise set in 45 acres of landscaped gardens overlooking the Arabian Sea. The resort has rooms located in the main complex and cottages and Villas located on a hillock overlooking the sea and the gardens.



ACCOMMODATION

Superior Garden View Room with sit out (29 sq mts) – Total 20 rooms.
Located in the main building overlooking the gardens with a private sit-out.



Aguada Cottages with Garden View (37 sq mts) – Total 18 rooms. Located in the Hermitage, garden facing cottages with private sit-out overlooking a lush lawn.



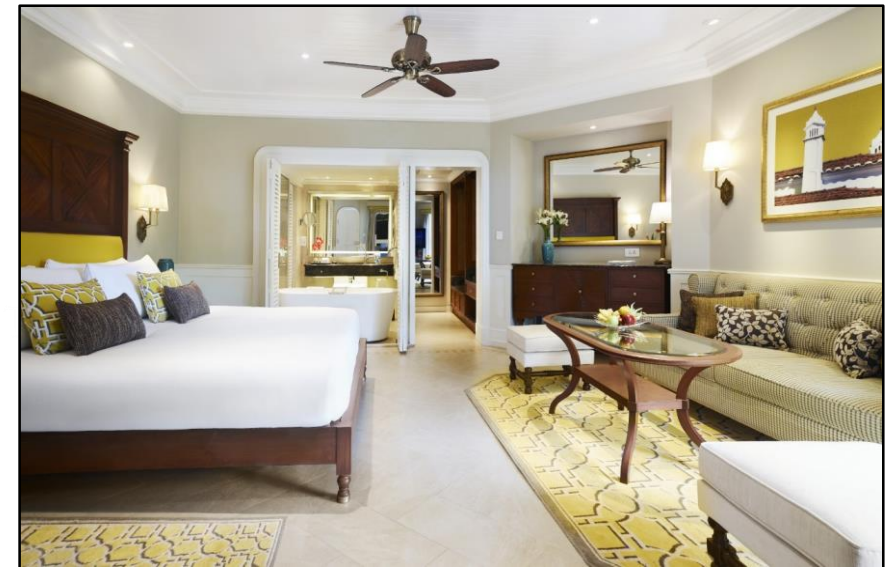
ACCOMODATION

Deluxe Sea View Rooms (29 sq mts) – Total 24 rooms.

Located in the main building, offers a stunning view of the Arabian Sea.



Aguada Cottage Sea View (37 sq mts) – Total 20 rooms. Located in the Hermitage, cottages with private sit-out offers spectacular views of the Arabian Sea.



ACCOMMODATION

Deluxe Sea View Rooms with sit-out (29 sq mts) – Total 20 rooms. Located in the main building ground floor with private sit-out offers a stunning view of Arabian Sea.



Premium Suite Sea View (56 sq mts) – Total – 24 suites. Located in the main building, offers a spectacular view of the Arabian sea. These rooms have one bedroom, a living room and a terrace



ACCOMODATION

Hermitage Villa Garden view (1 Bedroom) (74 sq mts) – **Total 08 Villas.** Stand-alone villas with a bedroom, living room, a private lawn and garden furniture with parasols & garden view.



Hermitage Villa Sea view (1 Bedroom) (74 sq mts) – **Total 06 Villas.** Stand-alone villas with a bedroom and a living room, a private lawn and garden furniture with parasols over looking the sea.



ACCOMODATION

Hermitage Villa Bay View 2 Bedrooms

(153 sq mts) – **Total 02 Villas.** Stand alone villa with a panoramic sea view. With two bedrooms, a living room, dining room and private lawn with garden furniture and parasols.



Presidential Villa 3 Bedrooms

(209 sq mts) – **Total 01 Villa.** Presidential villa offers a spectacular view of Arabian Sea. Three bedrooms, a living room, dining room with an attached kitchenette and private lawn with garden furniture and parasols.



BANQUET SPACES

Aguada Ballroom (185 sq mts) – Indoor venue



Bayview Lawns (4650 sq fts) – Outdoor Multi Level Lawns



BANQUET SPACES

**Fishtail Lawns (370 sq mts) –
Outdoor venue**



**Sunset Point Lawns (185 sq mts) –
Outdoor venue**



Facilities:

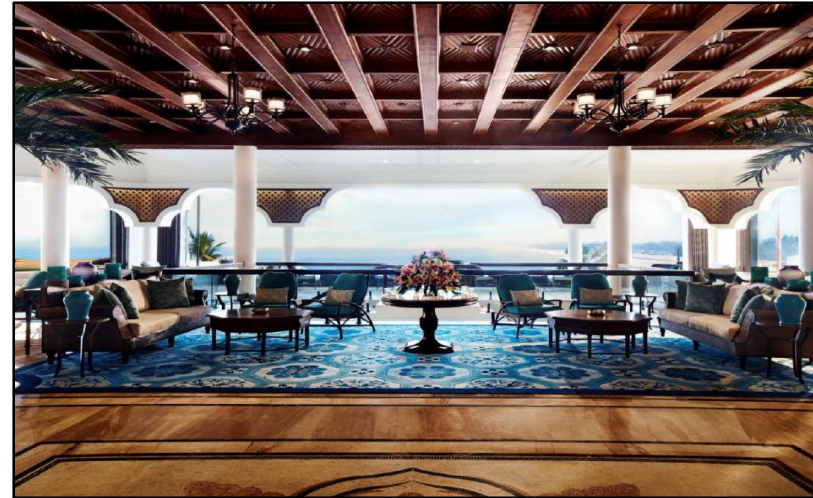
03 Restaurants:

- Kokum Kitchen – All Day Dining Restaurant
- Morisco – Seafood Grill Restaurant
- Il Camino – Italian Specialty

02 Bars:

- SFX Lounge
- Martini Bar

- Jiva Spa & Salon.
- Infinity swimming pool over looking the Sea.
- Hermitage Lounge & swimming pool
- Fitness centre.
- Sports Complex & Adventure activities.
- Proximity & access to all facilities of Taj Holiday Village (3-4 mins).



Taj Holiday Village Resort & Spa, Goa

Set in North Goa, Taj Holiday Village Resort and Spa channels a vintage, ambrosial, appeal that's tailor-made for an idyllic family vacation. Elegant Indo-Portuguese architectural heritage is showcased through Romanesque arches, pillared verandahs and sunny saquãos (central courtyards). With the beach on side and cocooned in dense foliage, hotel's 142 terracotta-roof suites and villas in Goa deliver contemporary luxury in the midst of nature at her most glorious.



ACCOMODATION

Superior Room Garden View with Balcony
(22 sq mts). **Total 24 rooms.**

&

Luxury Room Garden View with Balcony
(22 sq mts). **Total 16 rooms.**

Located on the first floor of a cottage structure with a balcony with a garden view.



Superior Room Garden View with Sit Out
(24 sq mts). **Total 28 rooms.**

&

Luxury Room Garden View with Sit Out
(24 sq mts). **Total 16 rooms.**

Located on the ground floor with a private sit-out offering garden view.



ACCOMODATION

Premium Cottage Garden View with Sit Out (29 sq mts). Total 32 rooms.

Garden facing, ground level rooms with lush lawn sit outs. These rooms are conveniently located close to the pool and the lobby.



Premium Cottage Sea View with Sit Out (29 sq mt). Total 17 rooms.

Sea-facing rooms, situated in blocks of two and a lawn sit out. Most have deck chairs, and garden furniture with a parasol



ACCOMODATION

Goan Villa Garden View (50 sq mts)

Total 3 Villas.

Stand-alone Villa – 1 bedroom, a living room overlooking the garden & private sit-out.



Goan Villa Sea (50 sq mts). Total 2 Villas.

Stand-alone Villa overlooking the Arabian Sea – 1 bedroom, a living room, garden with private sit-out.



ACCOMODATION

Luxury Goan Villa Sea View (52 sq mt). Total 4 Villas.
Sea View with large Private Lawn with deck chairs and garden furniture with a parasol.



BANQUET SPACES

Drama Hall (92 sq mts) –
Indoor Venue



Debate Hall (63 sq mts) –
Indoor Venue

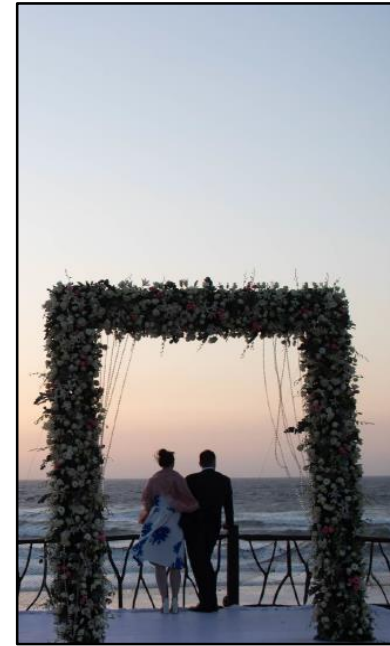
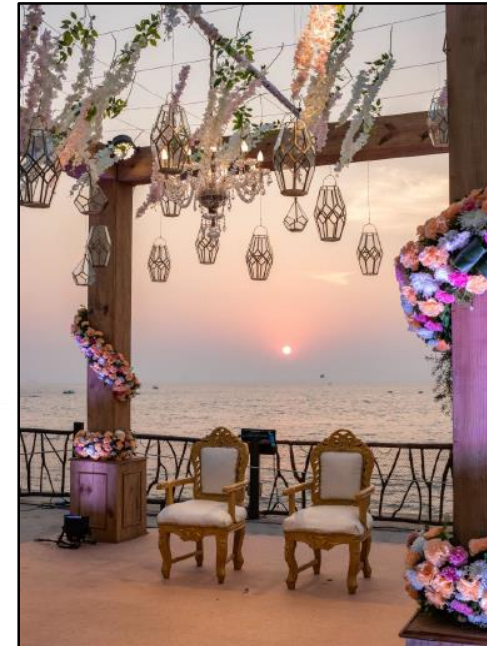


BANQUET SPACES

**Sunset Deck Lawns (930 sq mts) –
Outdoor Venue**



**Banyan Tree Restaurant & Lawns
(370 sq mts) –
Indoor & Outdoor Venue.**



BANQUET SPACES

Beach House Restaurant & Lawns –
(350 sq mts) – Indoor & Outdoor
Venue.



Facilities:

03 Restaurants

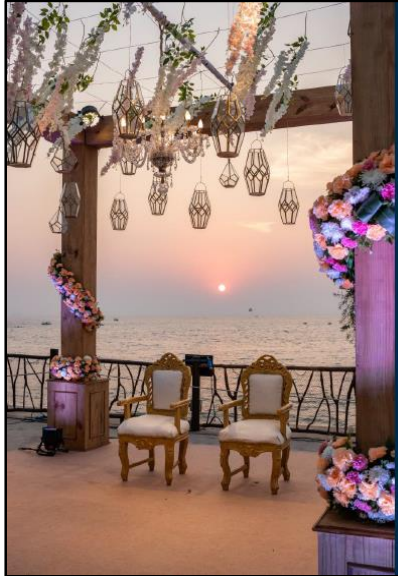
- Caravela – All Day Dining Restaurant
- Beach House Restaurant – Goan Portuguese specialty
- Banyan Tree Restaurant – Thai Specialty

02 Bars

- Drift Bar
- Pool Bar
- Golf Course overlooking the Arabian Sea.
- Jiva Spa and Salon.
- Sunken Pool Bar.
- Fitness Centre.
- Kids Activity Centre.
- Sports Complex & Adventure activities.
- Proximity & access to all facilities of Taj Fort Aguada (3-4 mins).



PAST EVENTS



Thank you.

TAJ SELECTIONS VIVANTA GINGER EXPRESSIONS TAJ SATS