

News of Peace



Peace Lutheran Church, Camdenton, MO

Published monthly by Peace Lutheran Church

May 2024

Inside This Issue

| | |
|-----------------------------|-------|
| A Pastor's Message | 1 |
| Evangelism | 2 |
| Every One His Witness | 4 |
| Devotion for May | 5 |
| Support Schedules | 6 |
| LWML News | 7-8 |
| Stewardship | 9 |
| Council Minutes | 10-11 |
| Calendar | 12 |

Christian Symbols



Sparrow

Birds in general symbolize God's presence. Sparrows represent God's concern and care even for those thought insignificant. In Jesus' words, "Are not two sparrows sold for a penny? Yet not one of them will fall to the ground outside your Father's care. ... So don't be afraid; you are worth more than many sparrows" Matthew 10:29, 31, NIV).

Ascension

Encore Post: The Ascension is an important event in the life of Jesus and the Church. It is the final part of the work which redeemed us: the cross, where our sins were paid for, the resurrection where the power of the grave was broken and the ascension which restored all His honor, glory, authority and power. From the days of the early church, over 1500 years ago, until recent years, the church celebrated the Ascension on the fortieth day after Easter, or the Thursday ten days before Pentecost. In the 21st century, many churches celebrate Ascension on the Sunday before Pentecost.

When He ascended, Jesus left His Church a promise, a mission and a blessing. He promised to be with us always, until the end of time. He gave us our mission. We would join His mission to seek and save the lost by going to the whole world, being witnesses to His life, death and resurrection, to proclaim the good news of salvation, baptizing and teaching all He commanded us. As He ascended, He blessed them as Aaron and the High Priest did and as pastors do to this day, giving us His peace. He promised to be with us always, until the end of time itself.

Now the church waits patiently for him to return. On a day that no one knows, Jesus will return. On that day, he will raise our bodies from the grave, judge all the living and the dead, bring an end to sin, death and the power of the devil.

God will live among us again, throw the greatest marriage feast of all time. He will dry the every tear from our eyes.

Rev. Robert E. Smith





May

- 11 Russell Schulz
- 12 Paul Bartels
- 12 Matthew & Debbie Mayes
- 15 Fran Lashley
- 18 Larry & Jayne Marie Trick
- 24 Jeff & Dawn Hedberg
- 29 Barbara Powell
- 31 Paula Emery

I Am With You Always

The Ascension of Christ is celebrated 40 days after Easter. It focuses upon the ascent of Christ into heaven shortly before Pentecost.

The Ascension is important to Christians because it reminds us that while Christ’s human body could not be present everywhere, Christ’s spiritual presence can be experienced universally. St. Matthew’s Gospel tells us Christ’s last words to his friends were, “Remember, I am with you always, to the end of the age” (Matthew 28:20 NRSV). And so Christ is!

Church Office Schedule

Church office hours are Tuesday, Wednesday, Thursday from 8 a.m. to noon. Phone number is 573-836-8141

Answering Objections to the Faith: The Basics of Christian Apologetics

Questions & Answers

Question 1: What if a non-Christian were to ask you why he or she should become a Christian instead of a follower of another religion? What would you say?

One possible answer: You could say that he or she should become a Christian because Christianity is true and others are not. (Many arguments for Christianity have been discussed in previous issues any of which can provide ample reasons for becoming a Christian).

The apostle John repeatedly emphasizes that his readers should put their trust in Jesus Christ because the Gospel message is true.

For example, John records this dialogue between Jesus and Pilate: “Then Pilate said to Him, ‘So you are a king?’ Jesus answered, ‘You say that I am a king. For this purpose I was born and for this purpose I have come into the world – to bear witness to the truth. Everyone who is of the truth listens to my voice,’ Pilate said to Him, ‘What is truth?’” (John 18:37-38).

John here makes the overarching distinction that the entire Bible makes between Christianity and other religions—Christianity is true and the other religions, or religious positions, of the world are not.

Next month: Why a pastor might be likely to include apologetics in a sermon given at a funeral than a regular service and responding to the statement, “The only reason you are a Christian is because your parents were Christians.”

(from: *The Reason I Believe* by Allen Quist)



Easter Brunch

Many members attended the Easter brunch after worship service Easter Sunday. A donation of \$123.30 was given for missions. Photos taken by Susan Kral and Pudge McCloud.



Every One His Witness: **Listen!**

Last month's column

dealt with three kinds of people one might encounter in conversation: head, heart, and hands people.

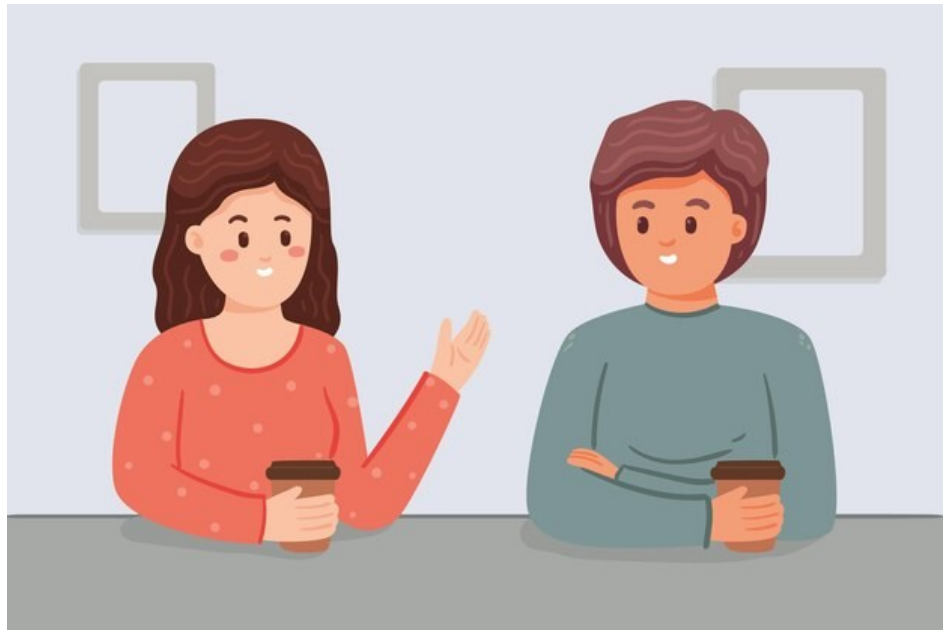
Keeping that in mind, the starting point of engaging people as Christ's witnesses is listening. For some, listening can be challenging. We are prone to speak than to listen, especially when we have something to share.

Some evangelism programs start with speaking and some don't even mention listening. But we take our cue from James 1:19, **"Everyone should be quick to listen, slow to speak, and slow to become angry..."**

LASSIE starts with being quick to listen. When we listen, we show that we care about them as people, not as objects of conquest as in the case of speaking to what one might think answers the other person's needs rather than listening to discover those needs and then responding to them.

Listening will help to form new relationships and strengthen old ones in ways that just speaking cannot because listening will provide insights into worldviews and reveals concerns, issues, fears, and hopes.

Only after we've learned these things can we effectively speak of how Jesus has provided what he/she needs. One of the benefits of listening is that it helps us ob-



tain information to get to know that person. An old adage goes: "You aren't learning anything when you're talking."

Listening also provides enjoyment when you listen to someone; whether it's an interesting fact from experience, or discovering something in common, we can gain a real and lasting connection with a person that brings us genuine joy.

We may know someone for a long time and never really have gotten to know them because we haven't really listened. Interesting and informative perspectives, experiences, life lessons, and more are waiting to be discovered by listening.

As Christ's witnesses, listening is the primary tool for understanding what a person

thinks about religion, spiritual matters, wants to accomplish with life, what is and what isn't important to that person, and so on.

Without first listening, we are left with assumptions about that person that may not be accurate and most often hinder our witness rather than help it. So listening is an important first step to witnessing.

by Mark Wood director of LCMS Witness & Outreach Ministry

The LASSIE Approach To Witnessing - Listen, Ask, Seek, Share, Invite, Encourage)

"None can believe how powerful prayer is, and what it is able to effect, but those who have learned it by experience."

—Martin Luther

Devotion for May



Beloved, let us love one another, for love is from God, and whoever loves has been born of God and knows God.

1 John 4:7

So many folks I talk to tell me they feel absolutely exhausted at the end of the day. Even so, as they look back, they can't think of anything they've really accomplished to make them feel that way.

Having said that, a good friend of mine suggests we become tired for many different reasons - not all of which can be measured. Although he hardly claims to be scientific, he came up with a list that is food for thought. He said, when you ...

- beat around the bush, you burn up 75 calories;
- jump to conclusions, that consumes 100 calories;
- climb the wall, you can count off 150 calories;
- swallow your pride, that's 150 calories,

but if you...

- beat your own drum, you expend 300 calories.

As I say, his calculations aren't very scientific. Still, in a silly sort of way, they do have a ring of truth.

Think for a moment, don't you know somebody who spends most of his time and energy doing those things which were just listed. As a matter of fact, if we're being honest, we have to admit that we, on the rarest of occasions, do the same.

That's not the way God wants us to be. He, who is completely filled with love, wishes His people to be the same way. He wants us to be responsible

individuals who—in the Name of the Savior who has redeemed us— live their lives in service to others.

It's quite a challenge, but if we do as He wishes, this day will be well spent and our evening will be peaceful because we know we have served the Lord who gave His Son so we might be saved. (From a devotion originally written for "By the Way")

The Prayer: Father, help us to use our time wisely. In all we do and say, let us reflect the Savior to others. In His Name we ask it. Amen.

From a 2011 Lutheran Hour Ministries Devotion

You Are My Witnesses

John White (1924-2002) was a medical missionary, psychiatry professor, church planter and prolific author who wrote about faith and outreach. He refuted the notion that being an effective witness for Christ is akin to being a salesperson. Christians are representing and sharing a person, he said, not touting a product.

"A good witness is like a signpost," he added. "It doesn't matter whether it is old, young, pretty, ugly. It has to point the right direction and be able to be understood. We are witnesses to Christ; we point to him."



Support Schedules

Elder

Altar Guild

| | | |
|------------------|--------------|---|
| May | Jeff Emery | Susan Kral |
| June | Larry Trick | Cindy Niebur |
| July | Jeff Hedberg | Shelia Hartenstein |
| August | Jeff Emery | Diane Borgmann |
| September | Larry Trick | Paula Emery |
| October | Jeff Hedberg | Janet Bartels |
| November | Jeff Emery | Diane Borgmann first two Sun Dawn Hedberg last two Sun |
| December | Larry Trick | Diane Borgmann first two Sun Dawn Hedberg last two Sun |

Minister Rev. Gary Brandt

Organists Rev. Gary Brandt, Diana Schwab

Ushers

| | |
|------------|---|
| 1st Sunday | Robert & Penny Hansen, Paul Bartels |
| 2nd Sunday | Earl Hartenstein, Jeff & Paula Emery |
| 3rd Sunday | Diane Borgmann, Rodney Schulz |
| 4th Sunday | Jeff & Dawn Hedberg, Russell Schulz |
| 5th Sunday | Robert Hansen, Earl Hartenstein, Jeff Hedberg |

Counters

| | |
|------------|------------------------------------|
| 1st Sunday | Jeff & Dawn Hedberg |
| 2nd Sunday | Jeff & Paula Emery |
| 3rd Sunday | Brett & Cindy Niebur/Pudge McCloud |
| 4th Sunday | Matt & Deb Mayes |
| 5th Sunday | Pudge McCloud |

THANK
YOU



Hospitalized?

If you or a loved one is hospitalized, have experienced a death in the family, are home bound, or scheduled to go to the hospital, please contact Pastor Brandt (580-421-8108). Please keep in mind that privacy laws also limit the information hospitals can share with us. Pastor Brandt is available for any emergency, or any issue you and your loved ones might be having.



Our Elders: Jeff Hedberg (573-819-4446), Jeff Emery (816-745-0229) and Larry Trick (573-286-4423) will assist the pastor to follow up on any issue, not just hospitalization for you, a loved one or a death in the family.

April 8 Minutes

The meeting was called to order by Co-Presidents Cindy Niebur and Dawn Hedberg. Our roll call word for the month was “fast”. Seven members answered roll call with one regular guest attendee. Members recited the LWML Pledge.

Minutes: Last month’s minutes and treasurer’s reports were approved.

Presidents’ Reports

- We discussed having a greeter at the front door of the church, and the basement door during church events, (such as Easter Brunch), and a better placement of the donation basket.
- A discussion held on our participation in funeral meals for grieving families.
- Discussion was held about a church hospitality committee. A welcome packet can be created with a personal letter to invite new lady members to our society.
- Reminder: The District Convention is June 7-9th in Independence Mo.
- Preparation is being made to update our by-laws.

Correspondence: No correspondence

Collections: A collection was made for Mites, general fund, and the rally.

Committees:

Human Care: Cathie Mueller reported that Kent Memorial Lutheran will hold a luncheon for their nursing scholarships on Friday, May 3. Other committees did not report.

Old Business:

- Kitchen items were donated to fill a gift basket for the District Convention Silent Auction. A “Cooking with Love” basket was put together.
- Our Co-Presidents invited members to attend the Spring Rally on April 16 at St. John’s, Cole Camp. Paula made lovely “save the date” invitations to hand out at the rally.
- We decided to have a salad luncheon for the May meeting and play Bunco afterwards.

New Business:

- Mission Project: We liked the idea of making lap robes for Windsor Estates in Camdenon.
- We discussed having an ice cream social on Thursday,

June 20. All members of Peace will be invited.

- Members need to be on the lookout for artificial fruit to use as table decorations for the fall rally.
- We discussed having a fundraising lasagna dinner. The date was set for Saturday, October 5, 4 PM to 7 PM.
- Further discussion was made on our “Quarterly-Get-Togethers”. A list was made of possible places to visit and things to do.
- Members discussed a silent auction for a December fundraiser. This would give people options for Christmas shopping!

With no further business we closed with The Lord’s Prayer.

Respectfully submitted,
Jayne Marie Trick, Secretary

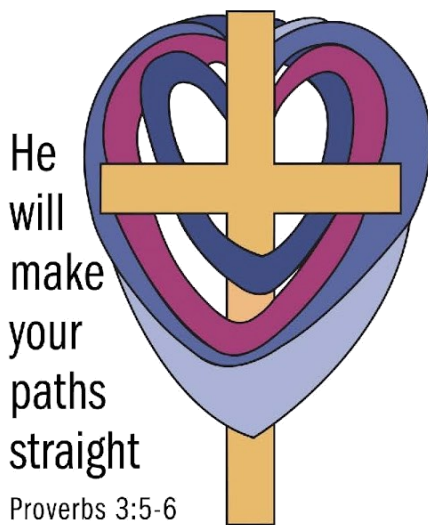


April Sunday Mites:
\$37.53

May Meeting

Our May 13 meeting role call word is **sadness**.

LWML Missouri Convention Next Month



JUNE 7- 9, 2024

LWML Missouri District Convention

Stoney Creek Hotel & Conference Center

18011 Bass Pro Drive
Independence, MO

816-908-9600

Code LWML 24



Wake up in the Word and Bible studies with author Deb Burma

Friday Night Fun with cornhole and karaoke

Mission Servant Events

Photo Booth

Saturday Night Trivia

Afternoon Mission Walk

Mission Fair

Silent Auction

Exhibitors Booths

Mites in Action Speakers

Breakout Sessions

LWML Store

HOTEL RESERVATIONS NOW OPEN!

Call the hotel directly and use Code LWML 24

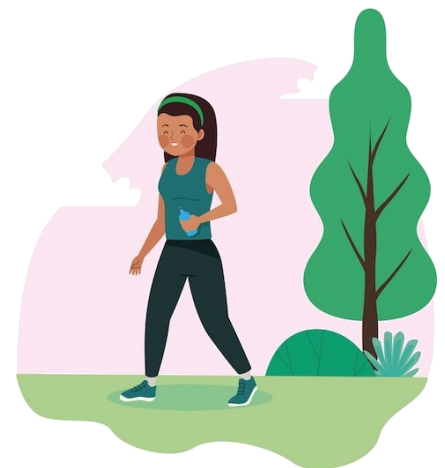
Convention Registration opens **MARCH 1, 2024**
Registration will be online only

Mission Walk

June 8 @ 4:30 p.m.

Waterfall Park Trail

(includes a draw string bag, coupons, snacks, etc.)



Join us on a peaceful nature walk (1.25 miles) behind Stoney Creek Hotel where there is an 18-acre lake, turtles and a large waterfall.

Proceeds collected from this walk will support the 2024-2026 Missouri District Mission Goal.

Please bring your pledged donations to the Mission Walk table in the registration area.)

As Lutheran Woman in Mission, we joyfully proclaim Christ, support missions, and equip women to honor God by serving others.



Stewardship

More Than a Negative

Even if you've never had to testify in court, a thousand TV shows have made you familiar with the question, "Do you swear to tell the truth, the whole truth and nothing but the truth?" Why not just make people swear to tell the truth? Or make them promise not to lie?

Any parent who has ever had to interrogate a child about a broken cookie jar or a scuffle over a toy knows the answer. There are plenty of ways to try to get out of trouble without *technically* lying. You tell *just enough* of the truth to skate on by.

We often play the game of seeing *how close* we can get to sinning without *technically* going over the line.

But in our heart of hearts we know that this is not what God intended when He gave us the commandments. He's not giving us a merely negative rule and challenging us to just barely stay away from this or that. There is much more to each commandment than a prohibition. We shouldn't just avoid murdering people — we should be of service to our neighbor.

For each negative prohibition in the commandments there is a positive good that we are to cherish and protect. In the Eighth Commandment, that gift is the reputation of our neighbor and our relationship with him:



“You shall not
give false
testimony
against your
neighbor.”

Exodus 20:16

What does this mean? *We should fear and love God so that we do not tell lies about our neighbor, betray him, slander him, or hurt his reputation, but defend him, speak well of him, and explain everything in the kindest way.*

Your relationship with your family members (who are your nearest neighbors), the other

members of your congregation, your coworkers and your friends is one of the most precious gifts you have been given. You need to exercise good stewardship with this gift just as much as you need to exercise good stewardship with your life, resources, time and income. This is an especially fragile gift because it's easy to ruin a relationship with slander and talking behind someone's back.

But speaking well of your neighbor in Christian love is absolutely free; it costs you nothing, yet it pays you great dividends. If you find this challenging at times, if you are tempted to speak ill of others, just remember that this other person is also a beloved child of God for whom your Lord Jesus suffered and died. Your Lord Jesus loves you both.

Reprinted from the LCMS Stewardship website



WORSHIP SCHEDULES

Sunday Worship* 9:00 am
Bible Class/Sun. School 10:30 am

Wednesday Evening Services:

- Ash Wednesday 6:00 pm
- During Lent 6:00 pm
- During Advent 6:00 pm

Holy Week

- Maundy Thursday* 6:00 pm
 - Good Friday Service 6:00 pm
- Easter Sunday* 9:00 am

Thanksgiving Eve

Wednesday Evening 6:00 pm

Christmas Eve

Evening Service 6:00 pm

**Holy Communion*

The Lord's Servants at Peace

- **Elders—Monday before Council Meeting 9:30 am**
Chairman: Jeff Hedberg, Jeff Emery, Larry Trick
- **Council—2nd Tuesday of Each Month 6:30 pm**
 - ◆ **President:** Bob Hansen
 - ◆ **Vice President:** Brock Kliever
 - ◆ **Secretary:** Susan Kral
 - ◆ **Financial Secretary:** Brett Niebur
 - ◆ **Treasurer:** Peggy Callahan
- **Stewardship:** Dawn Hedberg
- **Evangelism:** Russell Schulz
- **Education:** Open
- **Organists:** Rev. Gary Brandt, Diana Schwab
- **Trustees:** Chuck Kral, Rodney Schulz, Pat Callahan
- LWML—2nd Monday from March—Nov. 9:30 am**
Co-President: Dawn Hedberg and Cindy Niebur
Altar Guild: Dawn Hedberg
Bible Studies As announced
- *Elected Offices*

Silent Auction



The LWML ladies purchased items to make a basket to be auctioned off at the Missouri District Convention in June.

Council Meeting April 9, 2024

Vice President Brock Kliever called the meeting to order at 6:30 P.M. Pastor Brandt opened with prayer.

The following board members were present: **Pastor** Pastor Brandt, **President** Bob Hansen, **Vice President** Brock Kliever, **Treasurer** Peg Callahan, **Board of Elders** Jeff Hedberg, **Cemetery** Diane Borgmann, and **Church Member** Pudge McCloud

Absent: **Financial Sec.** Brett Niebur, **Sec.** Susan Kral, **Trustee** Chuck Kral, **Evangelism** Russell Schulz, and **Stewardship** Dawn Hedberg
The minutes from the March 12, 2024 meeting were approved as printed.

The minutes from the March 12, 2024 meeting were approved as printed.

Financial Secretary: Brett Niebur submitted a written report. His report was accepted and approved.

Treasurer: Peg submitted her report. All bills have been paid. Her report was accepted and approved.

Elders: Jeff reported the following:

- Our LWML group has made several suggestions for improving communications with guests and new members. A hospitality committee should be formed to assign Sunday morning greeters, provide a packet with information about Peace Lutheran, provide information about LWML, and assign a historian to document church events and activities.
- The LWML ladies are planning a fall fundraiser to help pay for the repairs to our drainage system and our emergency system.
- Pastor Joel Christiansen will occasionally fill in for Pastor Brandt.
- A suggestion has been made that non-alcohol wine be available for communion. The matter will be researched.
- Jeff Emery will present a plan for dealing with emergency situations at the upcoming voters' meeting.
- A question was raised regarding the placement of our American flag. The issue will be researched.

The report was accepted and approved.

Trustees: Chuck reported the following:

Rodney Schulz purchased rock to fill in areas where bushes were removed. He, Chuck Kral and Kyle Wright shoveled the rock where it was needed.

Chuck's report was accepted and approved.

Education: Vacant

Evangelism: Russell reported the following:

- The cost of sending 133 outreach cards in March was \$118.37.
- He submitted evangelism articles for our newsletter.
- He has put posts on Facebook.
- Life Line will hold a health screening on July 19, 2024.

Russell's report was accepted and approved.

Stewardship: There was no report.

Member at Large: Vacant

Cemetery: Diane reported that Rodney Schulz applied fertilizer in appropriate areas. Her report was accepted and approved.

Pastor's Report:

Pastor Brandt reported the following:

- Pastor Brandt is grateful to all for using their time and talents to prepare our church for a beautiful Lenten Season and Easter Sunday. He appreciates the good attendance at Midweek Services and Sunday mornings.
- He made one hospital visit in March.
- He asks for prayers for LC Stalcup, son of Will and Rhonda Stalcup who has had brain surgery for a malignant tumor.
- He asks that we continue to pray for Paul Bartels' mother and Pat Callahan's father who are in hospice care.
- It was decided during a Zoom conference call that Pastor Joel Christiansen will be leading some services here. He will share his plans to increase our membership. He and President Hagen both see potential for growth here at Peace Lutheran.
- He attended the monthly Circuit Pastors' Conference on April 9 at Mt. Hulda Lutheran Church south of Cole Camp.

His report was accepted and approved.

President's Reports:

Old Business:

Bob Hansen reported that Eagle Security will begin work when the parts that have been ordered come in.

New Business: None

Brock adjourned the meeting.

Pastor Brandt led the closing with The Lord's Prayer.

Respectfully submitted,
Susan Kral Secretary and
Pudge McCloud Acting Secretary



| Sunday | Monday | Tuesday | Wednesday | Thursday | Friday | Saturday |
|--|--|---------------------------------|---|--|--------|---|
| | | | 1  May Day | 2 | 3 | 4 |
| 5 Worship 9 am Bible Study 10:30 a.m. Mites Collection | 6 Elders Mtg 9:30 a.m. | 7 | 8 | 9  Ascension Day | 10 | 11 |
| 12 Worship 9 am Bible Study 10:30 a.m. Mother's Day | 13 LWML Mtg. 9 p.m. Roll call word sadness | 14 Council Mtg. 6:30 p.m. | 15 | 16 | 17 | 18  ★ ARMED FORCES DAY ★ |
| 19 Pentecost Worship 9 am Bible Study 10:30 a.m. | 20 Newsletter Deadline 9 a.m. | 21 | 22 | 23 | 24 | 25 |
| 26 Trinity Sunday Worship 9 am Bible Study 10:30 a.m. | 27 Memorial Day Observed | 28 | 29 | 30  Memorial Day Remember Those Who Gave Their Lives | 31 | |



News of Peace is a monthly newsletter of Peace Lutheran Church, 9307 North State Highway 5, Camdenton, MO 65020; Rev. Gary Brandt: 580-481-8108; Church Phone: 573-836-8141; Office Hours: Tues., Wed., Thurs., 8 am to 12 pm; Church email: plccamdenton@gmail.com; Website: www.plccamdenton.org; Newsletter: Sheryl Bald

Our Mission: "We the members of Peace Lutheran Church gather and grow together as God's children and rejoice in the name of our Lord and Savior Jesus Christ, proclaim His word, and reach out with his love to: each other, our community, and the world."