

Timed Fuse Delay Add-on Kit

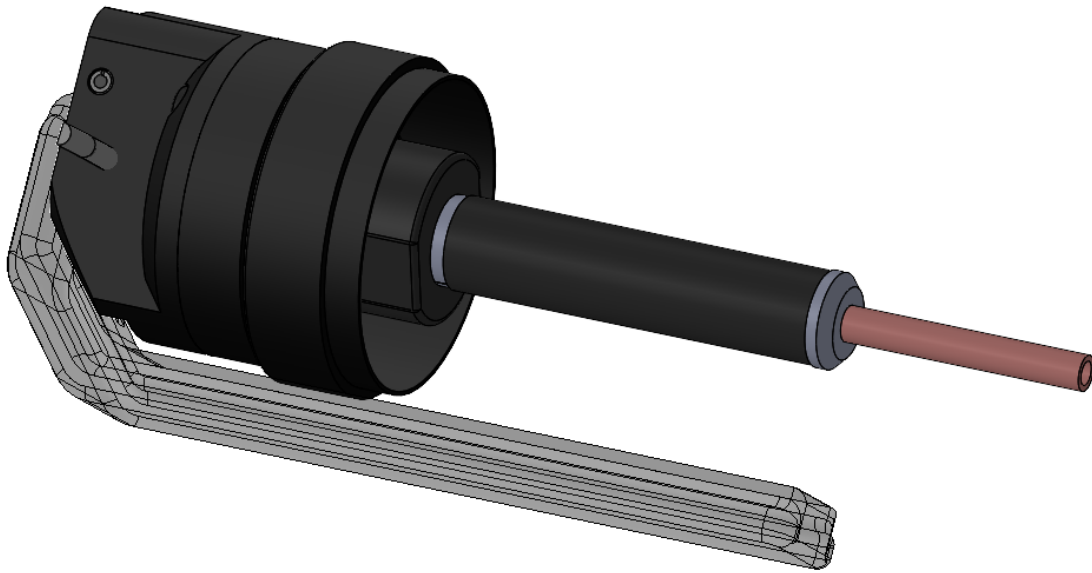
Instructions Rev 1.0

Instructions cover all models. 2 second delay or 6 second delay.

M8

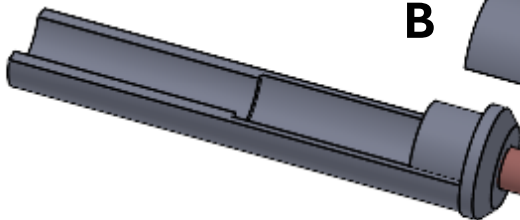
M8
MAX

M8
MINI

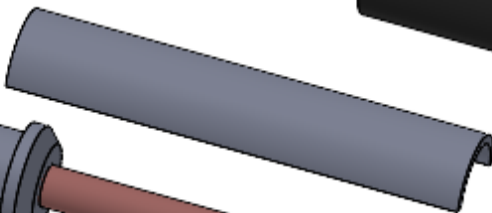


Parts Included:

A



B



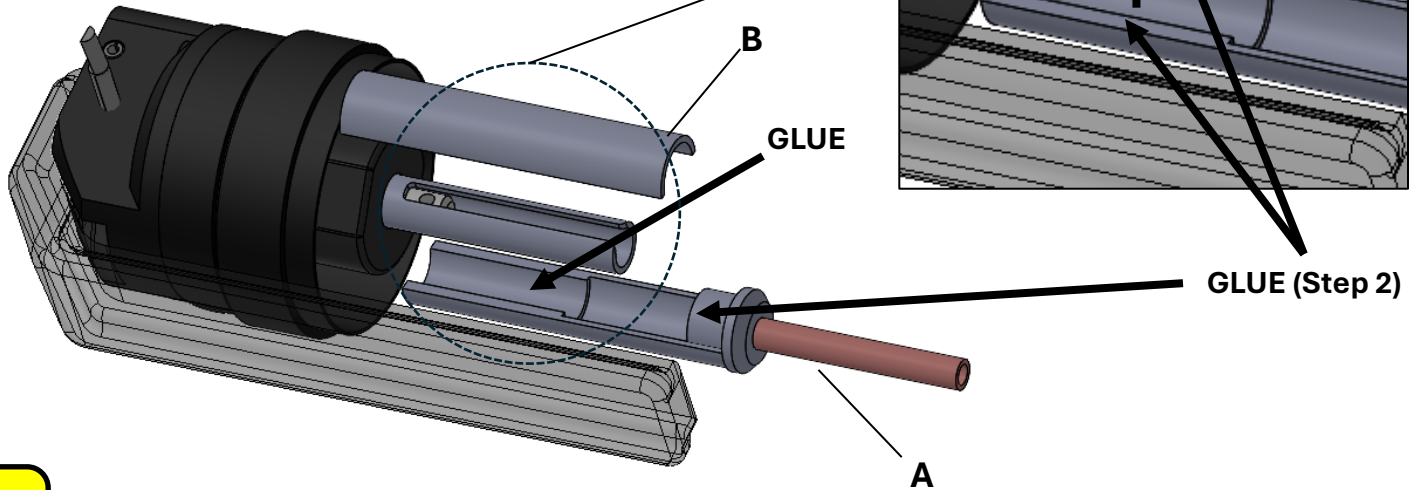
C



Fuse included. Not shown.

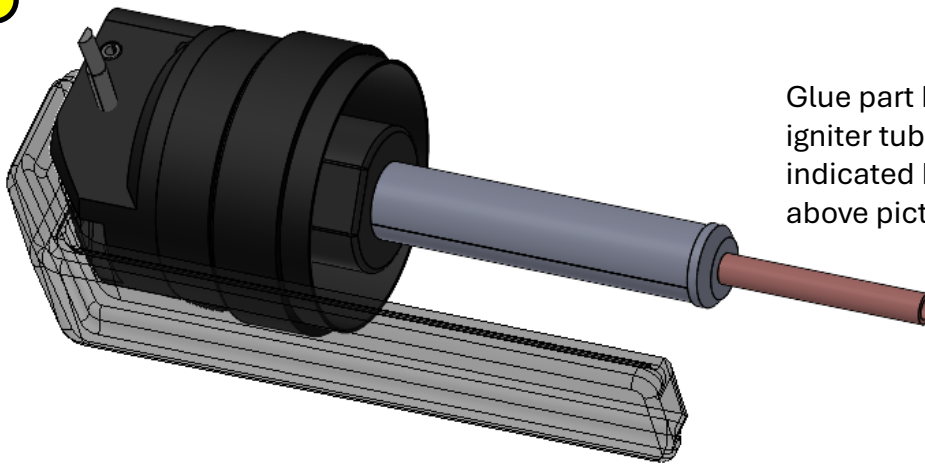
1

Glue part A to the igniter tube in the area indicated by the arrow and in the same orientation.



2

Glue part B to part A to the igniter tube in the area indicated by the arrow on the above picture.



3

Wrap the assembly with the provided vinyl sticker.

