

## Morris Creek History

II. Mine History. Historical information regarding the project area has been difficult to locate. One reasoning for this is that the Morris Creek watershed is split down the center by Fayette and Kanawha Counties. Thus, historical documentation was located in references regarding both counties. Donwood, the main community within Morris Creek is also divided in half by the county line. The Kanawha County side (west side of drainage) has a post office establishment date of 1911. The Fayette County side (east side of drainage) has an establishment date of 1933. Furthermore, coal mining activities are also split by the county line. Thus a mine operation may note its' tipple location within one county, but the mine entries are noted in the other county, as reported in the Department of Mine Annual Reports. Of further interest is that the historical references regarding the city of Montgomery, which is located adjacent to project area, note no information regarding the Morris Creek area.

What is know is that the Morris Creek area is named in reference for Levi Morris, considered the first permanent settler in Fayette County, whom constructed a house at the mouth of what is now known as Morris Creek in 1793. His house is noted to be still standing, known locally as the "Old Riggs Place."

The Morris Creek area was noted in early references of Kanawha County history to have numerous coal operations within its valley. The West Virginia Department of Mine first published report (C. 1883) notes several mines within the valley. These operation most likely pre-date this time period as no mine reports were made prior to 1883. By 1976, only one active mine is shown within the Morris Creek valley. This mine, located approximately one mile south of Donwood, was operated by the Central Appalachian Coal Company, according to the Department of Mines. The tipple for this mine was located along the Kanawha River, just west of Montgomery. Coal from the mine was transported to the tipple via a surface coal conveyor which ran into Possum Hollow, at which point it ran underground, surfacing just above the river tipple locale.

A circa 1910 topographic map of the area shows a large collection of structures above and below the Donwood area, and then up Schuyler Fork. The railroad line running up the creek is shown crossing over the stream channel several times, ending just above the Donwood area. Even though mining activities were present throughout the Morris Creek area, none are shown on the map. A circa 1928 topographic map shows fewer houses in the Donwood area, especially

along Schuyler Fork. The housing boom is now shown between Donwood and Montgomery. Of particular interest is that the two drift mines are now shown; one up Possum Hollow, the other just below the western branch of Morris Creek where it ends at a drift mine site. Other further interest is that the rail line has moved. In 1910, the line, at Donwood, crossed from the east side to the west side of Morris Creek then back to the east side, and then ended. In 1928, the line crosses over to the west side at Donwood and stays along this side until its end point noted above.

Below is a brief listing of the mining activities within Morris Creek, according to the Department of Mines. It should be noted once again that mining activities probably began prior to 1883, however, the state's mine reports were not produced for the years prior to 1883, thus it is not actually known when mining activities first began within the Morris Creek watershed. Coal, based upon the below information, was mined along the creek and along the side slopes. No planned reclamation activities are noted for any of the mine sites located above the creek level at this time. Thus no surveys were made within other areas of the valley. Numerous mine benches, located above the creek were seen during the field surveys showing locations of additional operations.

1876: (Information taken from National Register Survey file of Montgomery, and from History of Fayette County-Peters and Carden C. 1926).

Coal Valley Coal Company:

*Coal Valley Mine.* Located along south side of C&O railroad line, near west side of town (Mine sat above and to the east of what is now the WVU-Tech Campus).

1879: Coal Valley Coal Company operating within area known as "Coal Valley"

1883:

Mount Morris Coal Company:

*Mt. Morris Mine.* Located along Morris Creek. Coal is lowered from the mouth of the mine in the mine cars on a short inclined plane to the tipple. Drainage and ventilation are poor.

Carver Brothers:

*Carver Mine.* Along Morris Creek, this mine is operated by John and Enoch Carver. Coal from the mine is lowered in the mine cars on an inclined plane that runs 175 feet to the tipple at creek level. Ventilation is produced by a furnace shaft system. Shaft is noted to be 6 feet wide by 53 feet deep. The

stack is noted to be 16 feet high and constructed of planks, giving the furnace a total depth of 69 feet. The fire basket is 3 feet square by one foot ten inches deep and is hung at the bottom of the shaft just above the coal seam. Inspector notes that the basket sits too low and could ignite the coal seam.

MT Davis Company:

*Excelsior Mine.* Along Morris Creek, coal is lowered in mine cars over a short incline plane to the tippie. Ventilation is produced by a furnace system.

*Eureka Mine.* On Morris Creek. Mine entry is noted to be at tippie height, 30 feet above the Morris Branch line for the C&O. It is ventilated via natural means.

George Straughan:

*Straughan's Mine.* Located on the south side of the C&O railroad within Coal Valley. Mine is currently idle. Mine is ventilated via a furnace. Drainage is noted to be very bad.

Coal Valley Coal Company:

*Coal Valley Mine.* Mine is noted to be 10 years of age and is almost exhausted. It has six openings but its underground workings only cover 1800 square feet as all openings run straight into mountain with no parting or sidings. Mine is not ventilated, as air course would have nowhere to run.

1884: No information reported.

1885:

Mount Morris Coal Company:

*Mt. Morris Mine.* Mine uses a fire basket chimney system for ventilation, which does not provide adequate air currents. During the year, David Bowan was killed by a slate fall. The mine employs 49 workers and 7 mules.

Carver Brothers:

*Carver Mine.* Located directly below the Mt. Morris Mine. The mine employs 44 workers and 5 mules.

MT Davis and Company:

*Eureka Mine.* Along Morris Creek, 2 miles from Coal Valley (Montgomery). One fatality during the year when Henry Conley was killed by a slate fall. The mine employs 69 workers and 7 mules.

*Excelsior Mine.* Idle this year.

George Staughan:

*Straughan's Mine.* Employs 48 workers and 5 mules.

Coal Valley Coal Company:

*Coal Valley Mine.* Workings are nearly worked out. Mine employs 31 workers and 4 mules.

1886: (\*Note- This is the first year the mine reports are divided by counties).

Mount Morris Coal Company (Kanawha County):

*Mt. Morris Mine.* Employs 60 workers. Workings are ventilated via natural ventilation.

Morris Creek Coal Company (Kanawha County):

*Excelsior Mine.* Under new ownership for the year. Employs 30 workers.

MT Davis and Company (Fayette County):

*Eureka Mine.* Located near the Excelsior Mine. This mine employs 56 workers including 8 mule drivers, 2 trappers, and 2 track layers.

*Excelsior Mine.* Furnace ventilation is used. During the year a new furnace stack was being built, as the old system burned to the ground. Willie Caldon, employed as a mule driver was killed during the year as a result of a slate fall. He was 20 years of age. The mine employs 30 workers.

Carver Brothers: (Fayette County).

*Carver Mine.* Mine uses a fire basket at the bottom of a 55 foot deep shaft with a 32 foot tall chimney stack for ventilation purposes (Furnace System).

George Straughan: (Fayette County).

*Straughan's Mine.* Mine is noted to be defective in terms of air current. Mine is currently idle.

Coal Valley Coal Company: (Fayette County).

*Coal Valley Mine.* Noted as one of the oldest mines in the county. Mine is currently retreating and pulling pillars. Heavy drainage is noted coming from mine.

1890:

MT Davis Company: (Fayette County).

*Eureka Mine.* Mine is operating within the Coal Valley seam, noted to be 5 feet six inches in thickness. It has a double and single entry and employs 80 workers.

Carver Bros Company: (Fayette County).

*Mine Unnamed.* Noted to be located below the Excelsior Mine, the underground workings are robbing pillars. 80 workers are employed.

George Straughan: (Fayette County).

*Straughan's Mine.* Operating a double and single entry. Mine has 70

workers employed.

Mount Morris Coal Company: (Kanawha County).

*Mount Morris.* Contains a single entry into the Coal Valley seam, noted to five feet six inches thick. 39 workers are employed.

MT Davis Coal Company: (Kanawha County).

*Excelsior Mine.* Noted to be having problems with drainage.

1891:

Mount Morris Coal Company: (Kanawha County).

*Mount Morris.* Mine is idle.

MT Davis Company: (Kanawha County).

*Excelsior Mine.* Noted to be in operation

Eureka Coal and Coke Company: (Fayette County).

*Eureka Mine.* Located 1.5 miles south of Montgomery. It is operating on a double entry system.

Carvers Brothers: (Fayette County).

*Carvers Bros. Mine.* Noted to be located below the Eureka Mine.

George Straughan: (Fayette County).

*Straughan's Mine.* In operation.

1893:

Kanawha County: No mines noted to be in operation within the county.

MT Davis Company: (Fayette County).

*Eureka Mine.* In operation. Noted to have a wire rope haulage system.

*No. 2 Mine.* New mine just opened.

Carvers Brothers: (Fayette County).

*"Mecca Mine".*

Coal Valley Mining Group: (Fayette County).

*Coal Valley Mine.* (This may include both the Straughan and Coal Valley Mines).

1897:

MT Davis Company: (Fayette County).

*Eureka Mine.* Noted as an old mine and not extensively working during the year. The mine is using an endless rope system to haul coal from the mine to the tipple.

*No. 5 Block Mine.* Located near the top of the mountain, this mine uses a 1,700 foot long incline that runs from the tippie to the mine. It uses electric chain cutters and electric drills. Very little coal is mined by pick. The inspector notes that the mine is "probably the most successfully operated machine mine in the region."

Mecca Coal and Coke Company: (Fayette County).

*Mecca Mine.* This mine contains a single opening along either side of Schuyler Fork. The main tippie is located along Morris Creek. The No. 2 Gas seam is mined.

Coal Valley Mining Group: (Fayette County).

*Straughan's Mine.* Almost ready to abandon.

During this, mine drainage from the Coal Valley Mine broke loose and flooded downtown Montgomery.

1899:

Montgomery Coal Company: (Kanawha County).

*Mt. Morris Mine.* Mine employs 56 workers and 7 mules.

MT Davis and Company: (Fayette County).

*Eureka No. 2 Mine.* Operating and employs 58 workers and 8 mules.

*No. 5 Block Mine.* Mine employs 63 workers and 12 mules.

Mecca Coal and Coke Company:

*Mecca Mine.* Operating, and employs 105 workers and 16 mules.

Coal Valley Mining Company: (Fayette County).

*Straughan's Mine.* Employs 31 workers and 4 mules.

Carvers Brothers: (Fayette County).

*Eagle Mine (?)*. Employs 79 workers and 10 mules.

*Mecca Splint Coal No. 5.* Mine has just opened.

1900:

Montgomery Coal Company: (Kanawha County).

*Mt. Morris Mine.* Abandoned in October of this year.

MT Davis and Company:

*Eureka Mine.* Operating

*No. 5 Block Mine.* Operating.

Carver Brothers:

*Mecca Mine.* Operating.

Davis-Gordon Company:

*Eureka No. 2 and No. 5 Mines.*

Mecca Coal and Coke Company:

*Mecca Mine.*

Coal Valley Mining Company:

*Straughan's Mine.*

1901:

Eureka Coal and Coke Company: (Along the Morris Creek Br. of the C & O.)

*No. 5 Mine.* Located 2 miles south of Montgomery, this mine is noted to be 625 feet above the railroad, this mine uses a 1,730 foot incline with a 14 foot drum with 1 1/8 inch cable attached. The incline has 3-2ton cars which run down each trip. Coal is cut by electric cutters and hauled out by mule teams. The workings are ventilated by natural current with several additional openings placed to assist with the ventilation. The underground workings are noted to be connected with the Mecca Mine. Workings extend 4,000 feet into the mountain.

*No. 2 Gas Mine.* This double entry mine is noted to be at railroad grade level, this mine uses a steam hoist system in which coal is automatically dumped on screens. Mine motors bring coal to the tipple in 12-16 car trips. Each car holds 1 1/2 tons of coal. Ventilation is produced by a 16 foot forced air fan.

Carver Brothers:

*Mecca No. 2 Gas.* Located 45 feet above railroad grade level, this double entry mine is noted to be situated along Scarlet Branch of Morris Creek. The openings are located on either side of the drainage, with the tipple being across from Scarlet Branch. Inside are 2 gathering motors which can pull 24 cars per trip, with each car weighing 1 1/4 tons. The main powerplant is near the tipple and contains 2 boiler which produce 150 H.P. The mine contains a 14 foot forced air fan with straight blades.

*No. 5 Splint.* Located 650 feet above the railroad grade, at an elevation of 1505, this double entry mine uses a 1,925 foot long incline to bring coal to the tipple. Each car trip contains two cars, weighing 2 tons each. The underground workings are noted to connect to the Eureka No. 2 mine.

1902: According to the Inspection Reports, many of the mines within the Morris Creek area were on strike during part of the year. The strike was the result of the miners trying to get the coal company's to recognize the United Mine Workers of America (UMWA) Union. Records also show that no mines on the Kanawha County side of the valley are in operation. All mines reported are for Fayette County.

Davis-Gordon Coal Company:

*Eureka No. 2.* Mining the No.2 Gas this mine uses a double entry

system. It is ventilated by a 10 foot centrifugal fan.

*No. 5 Mine.* Mining the No. 5 Splint seam.

Mecca Coal and Coke Company:

*No. 2.* Double entry system, mining the No. 2 Gas. The workings are ventilated using a 14 foot centrifugal fan.

*No. 5.* Mining the No. 5 Splint, this double entry mine is located near the top of the mountain. Ventilation is produced by natural current from several openings added for this purpose.

Coal Valley Mining Company:

*Coal Valley Mine.* Mine is noted as a slope entry with a single haulage entry and a small furnace ventilation entry.

1903:

Elk Coal Company: (Fayette County).

*Morris Creek No. 1 Drift.* Located one mile south of Montgomery, along Morris Creek, this mine contains three double entry openings are either side of the creek. It is listed as a new openings, and as such is only using natural ventilation as the workings are not far into the mountain. Its tippie is located across creek near the No. 2 opening. An Electric plant is being installed and all equipment is noted as 1<sup>st</sup> rate.

*Morris Creek No. 2 Drift.* This double entry system has just opened. As such no shipments of coal have been made. A tippie and company housing are currently being constructed.

Mecca Coal and Coke Company: (Fayette County).

*Mecca No. 2.* Located 2 miles south of Montgomery, along Morris Creek, this mine contains two double entries, at tippie height, located on either side of the tippie. Inside the mine are 3 mining machines, 2- 10 ton mine motors, and a 12 foot fan. The inspection report notes that the miners are paid .53 per ton of coal, after it has been screened. It further notes that the electric plant is 1<sup>st</sup> class in equipment. 130 workers are employed.

*Mecca No. 5.* Located atop the mountain, above the No. 2 mine, this mine uses a 1.925 foot incline to bring the coal down to the tippie. The incline contains a 12 foot drum with 1 1/4 inch rope and 2 load cars which can carry 2 gross tons. The interior is ventilated by natural air current which is produced by several punch outs to daylight. Forty workers are employed.

Morris Creek Coal Company: (Fayette County).

*Morris Creek Mine.* Mine has reportedly just opened, and as such no



shipments have made. It is noted to be 2 miles south of Montgomery. The mine contains a 1,000 foot long incline to the tippie. The coal company is in the process of constructing buildings and houses for its workers.

Davis-Gordon Company: (Fayette County).

*Eureka Nos. 2 and 5 Mines.*

Economy Fuel Company: (Fayette County).

*Coal Valley Mine.* Mining the 3 foot six inch thick Eagle seam, all coal is pick mined. It has two entries, one for haulage, the other for a small furnace ventilation system. Coal is hauled to the surface via a steam rope haulage system.

1904:

Elk Coal Company: (Kanawha County).

*Morris Creek No. 2 Drift.* In operation

Morris Creek Coal Company: (Kanawha County). Operating at least one mine

Gordon Coal and Coke Company (Fayette County).

*No. 1 Mine.* No coal produced.

*No. 2 Mine.* Double entry mine with a 10' Crawford and McCrimmon fan.

*No. 5 Mine.* In operation, no information available. —

Mecca Coal Company: (Fayette County).

*No. 2 Mine.* Double entry mine with a 10' homemade ventilation fan.

*No. 5 Mine.* In operation, with natural ventilation.

Economy Fuel Company:

*Coal Valley Mine.*

1905:

Gordon Coal and Coke Company: (Fayette County).

*Eureka No. 1.* In operation, no inspection done.

*Eureka No. 2 Gas.* Located 1 ½ miles south of Montgomery, along the Morris Creek Branch of the C&O. This double entry mine contains electric motors and a 10' Crawford and McCrimmon steam powered fan (Figure\*\*). This mine is located 800 feet from the No. 5 mine, noted below. The mines share a tippie but use separate track.

*Eureka No. 5.* Located atop the mountain, and above the No. 2 mine; this entry uses electric coal cutters and hand picks to remove the coal. Natural ventilation is used as several entries have been opened to "daylight."

Carvers Brothers: (Fayette County).

*Mecca No. 2.* Located 1 ½ miles south of Montgomery, this double entry portal is mining the No. 2 Gas seam. The coal is mined by pick, and hauled out

by electric motors. Ventilation is produced by two disc fans.

*Mecca No. 5 Splint.* Mining the No. 5 Splint seam, this mine uses a 1,925 foot incline to bring the coal down to the tippie, also used by the No. 2 mine.

1906:

Eureka Colliery Company: (Fayette County).

*Eureka No. 1.* This mine has been abandoned.

*Eureka No. 2.* Workers within this mine have been on strike as the workers want the United Mine Workers Union to be recognized. As such, the mine has been idle. The mine was mining the No. 2 Gas seam using two Jeffrey coal cutters.

*Eureka No. 3.* Workers within this mine have been on strike as they want the United Mine Workers Union recognized. No coal production has occurred.

Mecca Coal and Coke Company: (Fayette County).

*Mecca No. 2 Drift.* Located 2 miles south of Montgomery, this double entry is mining the No. 2 Gas seam. Ventilation is produced by two disc fans. The inspection report notes that the extensive underground workings run into the Edgewater Mine, located on the other side of the mountain. It further notes that black damp is heavy throughout.

*Mecca Block Mine.* Located 2 miles south of Montgomery, this double entry mine is mining the No. 5 Block seam. It uses a 1,925 foot incline to reach the tippie. The underground workings are noted to connect with the No. 2 mine.

Morris Creek Coal Company: (Kanawha County).

*Morris Creek Mine.* Located 3 miles south of Montgomery, this double entry drift is mining the Kanawha seam. The inspection report notes that the mine is not following state laws.

Montgomery Coal Company: (Kanawha County).

*Montgomery Mine.* (May be located within Possum Hollow). Located on Morris Creek, near its mouth. Tippie is noted to be 1 miles east of Handley.

1907:

Eureka Colliery Company: (Fayette County).

*Eureka No. 13.* No inspection during the year. During the year a single fatality occurred.

*Splint No. 14 Mine.* No inspection during the year.

Mecca Coal and Coke Company (Fayette County).

*No. 2 and No. 5 Mines.* No inspection during the year

Montgomery Coal Company (Kanawha County):

*Possum Hollow Mine.*

1908:

Montgomery Coal Company:

*Possum Hollow Mine* (Kanawha County). The mine is noted as a double entry with a 4 foot ventilation fan.

Morris Creek Coal Company:

*Morris Creek Mine* (Kanawha County). This mine is not in operation this year.

Mecca Coal and Coke Company:

*Mecca No 2. Mine* (Fayette County). Located at Donwood, this mine is noted to be mining the No. 2 Gas coal seam. It has two fan ventilating the mine, one inside and one outside. The inspectors reports note that these fans do not produce enough air to properly ventilate the workings, as such Black Damp was present. The inspector also notes that the haulage roads inside were in poor condition, as was the entire mining operation.

*Old Mecca No. 5 Mine* (Kanawha County). Located at Donwood, this mine is noted as a drift entry with a short incline system in place leading to the tipple. It is ventilated via a natural air current.

*New Mecca No. 5 Mine* (Kanawha County). Located at Donwood, it is mining the No. 5 Block coal seam out of a double entry drift system with an incline leading to the tipple. The New No. 5 and Old No. 5 are adjacent to one another. The workings are ventilated via a steam furnace which the inspector notes is not sufficient for the mine.

Eureka Collieries Company:

*Eureka No. 13 Mine* (Kanawha County). Located at Donwood, it is mining the No. 2 Gas. The workings are ventilated via a 10 foot fan that brings air into the mine via a narrow "gun barrel" like openings which does not provide any air into the mine workings.

*Eureka Splint No. 14 Mine* (Kanawha County). Located at Donwood, it is mining the No. 5 Block seam and is ventilated via natural air currents. The inspector notes that the air flow is insufficient for the mine.

1909:

Montgomery Coal Company:

*Possum Hollow Mine* (Kanawha County). Located off Morris Creek, between Donwood and Montgomery, this mine is on a double entry system mining the Kanawha seam. A four foot fan is present.

Morris Creek Coal Company:

*Morris Creek Mine* (Kanawha County). Noted as a drift mine with a short incline system leading to the tibble, it contains a 10 foot ventilation fan which is the inspector notes does not provide air into the workings.

Mecca Coal and Coke Company:

*Mecca No. 2 Mine* (Fayette County). Mining the No. 2 Gas via a drift entry. This mine contains a 10 foot exterior fan and an interior fan. The inspector notes that the air system is not sufficient, and that the mine is not to standards.

*Old Mecca No. 5 Mine* (Fayette County). Located at Donwood, this drift entry contains a short incline system leading to the tibble located along Morris Creek. It is mining the Splint No. 5 seam and contains a natural ventilation system which is not to standards.

*New Mecca No. 5 Mine* (Fayette County). At Donwood, and adjacent to the Old No. 5 mine.

Eureka Collieries Company:

*Eureka No. 13 Mine*. Noted to be mining the No. 2 Gas seam, this mine has seen very little action this year.

*Eureka No. 14 Mine*. Mining the No. 5 Splint seam, this drift entry contains a short incline to the tibble. The inspector reports notes that this mine is not complying with any of the state mine laws. Very little coal has been mined this year.

Economy Fuel Company (Fayette County):

*Mud-Sock Mine*. Located at Montgomery, mining the No. 1 or Wyant coal seam this mine is noted to have been in operation for some time. Based on that info, and its' noted location, it is believed to the Coal Valley Mine. Operations within the mine are noted to be re-starting. No ventilation is provided for the small workforce inside the mine. Inspector noted the mine, in its' current condition, to be unfit for the workers and ordered improvements to be made immediately.

1910:

Eureka Collieries Company:

*Eureka No. 13* (Fayette County). Located at Donwood, this mine is mining the No. 2 Gas seam. The mine is ventilation via a 10 foot fan. The inspection report further notes that very little coal was produced this year from this mine. Mine is noted to be ready to abandoned.

*Eureka No. 14* (Fayette County). Also located at Donwood, this double entry mine is producing from the No. 5 Splint. It is ventilated using a six foot fan,

and according to the inspector's report, the management is paying very little attention to the state's mining laws. Mine has been idle most of the year.

Mecca Coal and Coke Company (Operated by the Carver Bros. Company)

*Mecca No. 2 Gas Mine* (Fayette County). Located along Morris Creek, this mine is producing from the No. 2 Gas seam, and contains two ventilation fans, one on the outside and one on the inside. Coal is moved from the mine via mules and a single mine motor.

*No. 5 Block Mine* (Fayette County). Along Morris Creek, this mine is producing from the No. 5 Block coal seam. Coal is removed by pick and moved by mule and a single mine motor. It is ventilated via a 7 foot fan.

Montgomery Coal Company:

*Possum Hollow Mine* (Kanawha County). Located within Possum Hollow, off Morris Creek, between Donwood and Montgomery, this double entry mine contains a 4 foot Stine fan. Coal is moved via mules and a single mine motor. The inspector report notes that the underground workings have encountered a fault, which has impacted their progress.

Morris Creek Coal Company:

*Morris Creek Mine* (Kanawha County). Located at Donwood, this double entry mine is producing from the Kanawha coal seam. Coal is removed via pick and an electric chain cutter.

1911:

Morris Creek Colliery:

*Morris Creek Mine* (Kanawha County). Mine opening is noted to be 1  $\frac{1}{2}$  miles above Donwood, it is mining the Kanawha seam via a "crude long wall system." It has pick miners and an electric chain cutter. Coal is moved by mule and mine motors.

Montgomery Mining Company:

*Possum Hollow Mine* (Kanawha County). Operating within the Kanawha seam, this mine is ventilated via 4 foot fan. Inside, the coal is removed by pick and hauled by mule or a single mine motor. It is then shipped by rail or river barge from Montgomery. The inspector notes that the mine is low on mineable coal.

1912:

Morris Creek Colliery:

*Morris Creek Mine* (Kanawha County). General office is located at

Charleston, WV. The mine is noted as a drift entry one mile above Donwood, along Morris Creek. It is mining the Kanawha seam with pick miners and an electric chain cutter inside removing the coal with mules and a single mine motor moving the coal to the surface.

*Morris Creek No. 5 Splint Mine* (Kanawha County). Located one mile above Donwood, this new mine is producing from the No. 5 Splint seam. It uses a small incline plane to bring the mined coal down to the tipple at creek level. Inside the coal is removed by electric chain cutters the moved to the surface incline by mules. Ventilation is provided by a furnace system.

Great Kanawha Colliery Company:

*Eureka No. 14* (Fayette County). Located at Donwood, this mine is noted to be on the retreat. It is working the No. 5 Splint seam, and ventilated by natural air currents (i.e. no man made systems).

Mecca Colliery Company:

*Mecca No. 2 Gas* (Fayette County). At Donwood, this double entry system is ventilated by a 10 foot fan. The No. 2 Gas seam is being mined by electric chain cutters and hauled by mule and a single mine motor.

*Mecca No. 5 Splint* (Fayette County). At Donwood, this double entry system is using pick and electric chain cutters remove the No. 5 Splint seam.

Eureka Colliery Company.

*No. 13 Mine.* Located at Donwood, this mine has been idle most of the year.

1913:

Eureka Colliery Company:

*Eureka No. 1 Drift, No. 3 Drift and No. 4 Drift.* All three mines are in operation, no further information available.

1914:

Eureka Collieries Company:

*Eureka No. 1 Drift.* This coal company's General Office is located in Athens, Oh. The No. 1 mine is noted as a drift entry mining the No. 2 Gas seam, located 3 miles above Montgomery, along Morris Creek. The entry is described as at tipple height. It uses a furnace system for ventilation, and has electric chain cutters, and gathering motors.

*Eureka No. 3 Drift.* Located one mile above Donwood, this mine uses a short incline which leads directly to the tipple at creek level. It has an 8 foot ventilation fan, and is using a Jeffrey Chain Drive coal cutter. Coal is moved by

mule and a single mine motor. 50 workers are employed.

*Eureka No. 4 Drift.* Located one mile above Donwood, this mine uses the incline system associated with the No. 3 Drift entry to move its coal to the tipple. The workings are ventilated by a furnace system, and uses electric chain cutters, mules. 15 workers are employed.

1915:

Eureka Coal Company:

*No. 1 Drift.* This mine is using a 6 foot Stine fan for ventilation and has electric chain cutters removing the No. 2 Gas coal, and a single mine motor to haul the coal. The coal company is in the process of constructing a twin tipple system which will span the creek allowing for mines to be located along both sides of the creek.

*No. 2 Drift.* This mine has an 1,800 foot long incline to bring the mined coal down to the tipple, located creek level. The No.2 Gas seam is removed by pick miners and hauled out by a single mine motor. The workings are ventilated by natural means. 20 workers are employed.

*No. 3 Drift.* Mining the Kanawha coal seam, this mine uses undercutting electric coal cutters to remove the coal. Mined coal is then hauled out by mule and a single mine motor. It has a short incline system to bring the coal to the tipple. This incline is shared with the No. 4 Drift.

*No. 4 Drift.* This mine is noted to have had little development over the year. Coal is removed by an undercutting coal cutter and all coal is hauled out by mules. The workings are ventilated by a furnace system.

*No. 5 Drift.* This new mine is referred to as the "Queen Mountain Mine." All coal is cut by machine methods and hauled out by electric motors. It also has a 1,400 foot incline to bring the mined coal to the tipple, located at creek level.

*No. 6 Drift.* Located at tipple height, this mine is producing from the No.2 Gas seam. The underground workings are noted to be working within an abandoned section, that has been re-opened. Electric chain cutters, mules and a single mine motor are used within the mine. It is ventilated by an 8 foot fan that is steam driven. 25 workers are employed.

1916:

Eureka Coal Company: (Kanawha County)

*No. 1, No. 2, No. 3, No. 4 (idle), No. 5 Mines,*

1918:

Eureka Coal Company:

*No. 1, No. 2, No. 5, No. 6 Mines.*

1919: Information taken from the WV Geological Survey Report.

Kanawha Rail and River Coal Company: (Fayette County).

*Mecca Mine.* Located on the south bank of Schuyler Fork at an elevation of 830' above sea level. The report goes on to note that this mine, abandoned five years ago, operated for 30 years. No prior notation of this mining company has been found within the Department of Mine Annual Reports.

Eureka Coal Company: (Fayette County).

*No. 1 Mine.* One quarter mile south of Donwood, on the west bank of Morris Creek at an elevation of 820' above sea level.

*No. 2 Mine.* One half mile south of Donwood, on the east bank of Morris Creek, elevation 850' above sea level.

*No. 4 Mine.* Three-quarters of a mile south of Donwood, along the east bank of Morris Creek, elevation 1590' above sea level.

*No. 5 Mine.* One and one-quarter mile south of Donwood, elevation 1615' above sea level. Mine started in 1915.

*No. 6 Mine.* One eighth of a mile south of Donwood, along the east bank of Morris Creek, elevation 860' above sea level. Mine was formerly owned by the Morris Creek Coal Company in 1911.

*No. 14 Mine.* Three quarters of a mile south of Donwood, at an elevation of 1590 feet. Currently being mined by the Davis Gordon Company.

Eagle Coal Company : (Coal Valley, Fayette County). Mine noted as the "Straughan Mine", and is the oldest mine in the county. It was originally owned by the Coal Valley Mining Company. It is described as being on the hillside, south of the C&O Railroad line, and on the eastern edge of town. Over the past year it has been worked by "colored" folk. There are 15 coal loaders, and 3 mule drivers working. All coal is pick mined.

Mecca Colliery Company: (Fayette County).

*No. 5 Mine.* Located .4 miles southeast of Donwood at an elevation of 1575 feet. Mine has been closed for almost three years. Cable and incline drum are still present on hillside marking mine location. This mine was formerly owned by the Carvers Brothers.

Eureka Coal Company: (Kanawha County).

*No. 3 Mine.* One half mile south of Donwood.



1920:

Eureka Coal Company:

*No. 1, No. 2, No. 5, No. 6 Mines.*

1922:

Eureka Coal Company:

*No. 4 and No. 5 Mines.*

1925:

Eureka Coal Company:

*No. 5 Mine.*

No detailed information available within the Department of Mine reports exist between the years 1925 through 1950 for this area.

1949:

Central Appalachian Coal Company:

*Morris Creek No. 1 Mine.* Based upon a circa 1949 mine map, this company was operating just south of Foster Branch. The mine itself is located on a man made bench along the side slope. Coal is brought down from the mine via a conveyor which leads to a small processing plant. From here the coal is belted to a river tipple.

1950:

Central Appalachian Coal Company:

*Morris Creek No. 1 Mine.*

1965:

Central Appalachian Coal Company:

*No. 1, 2, 3 Mines.*

1977:

Central Appalachian Coal Company:

*No. 1 Mine.* Within Banner Hollow

*No. 4 Mine.* Along Morris Creek

*No. 5 Mine.* Along Morris Creek

## West Virginia Cemetery Survey Form

1. Site Number (OFFICE USE ONLY): 46 FA 379
2. Cemetery Name, Historic: \_\_\_\_\_ Cemetery Name, Common: Quinn Cemetery
3. County: Fayette 4. 7.5' Quadrangle Name: Montgomery
5. UTM Zone: 17 Easting: 471 144 Northing: 4224 431
6. Location: Within Black Snake Hollow. Cemetery is accessed via Morris Lane. Go across concrete bridge and then follow road straight into hollow. Graves are present behind house on south side of drainage. A small trail leads into the area.
7. Ownership: Public: Municipal \_\_\_ County \_\_\_ State \_\_\_ Federal \_\_\_  
Private: Family \_\_\_ Church \_\_\_ Denomination \_\_\_\_\_  
Fraternal \_\_\_ Other Unknown-possibly coal company
8. Burial Population : Unknown-local residents note anywhere from 20-30 individuals
9. Predominant Surnames: Nunley, Quinn
10. Mass Grave: Yes X - No \_\_\_ Explain: Quinn Headstone marks three individuals
11. Public Accessibility: Unrestricted XX  
Restricted \_\_\_  
For permission to visit, contact \_\_\_\_\_
12. Access into Cemetery: By foot X By car \_\_\_
13. Terrain: Side slope above drainage
14. Bounded by: Fence \_\_\_ Wall \_\_\_ Hedge \_\_\_ Other None
15. Condition: Well maintained \_\_\_ Poorly maintained \_\_\_ Overgrown, easily identifiable \_\_\_  
Overgrown, unidentifiable X Unidentifiable, but known to exist through tradition or other means (identify source) Local residents know of it. Only two stone present and three grave shafts visible
16. Disturbances (describe): Area is heavily covered with trees and understory
17. Cemetery Size and Orientation (please give dimensions in feet, and indicate compass direction for long and short axis): Unknown at this time
18. Historical Background (use continuation sheet if necessary): \*\*See Attached Sheet\*\*

Site Number: 46 FA 379

Cemetery Name: Quinn Cemetery

19. Gravestones (Please list the number of gravestones that fit in the categories below. If this is a guess or an approximation, put "circa" before the number. Include photographs and/or sketches of representative decorative carvings.):

Number of headstones 2 Number of burials 20-30 Footstones? Yes \_\_\_ No X

Number of gravestones with burial dates from the 18<sup>th</sup> century \_\_\_ 19<sup>th</sup> century \_\_\_  
\*\*Unknwon\* 20<sup>th</sup> century \_\_\_ 21<sup>st</sup> century \_\_\_

Please list the earliest headstone date found 1951 Most recent date 1981

Number of gravestones of each material: Slate \_\_\_ Marble \_\_\_ Granite \_\_\_  
Sandstone \_\_\_ Fieldstone \_\_\_  
Other Concrete

Types of decorative carvings represented: \_\_\_\_\_

Number of gravestones that are: Readable 2 Eroded \_\_\_ Badly tilted \_\_\_  
Cracked/broken \_\_\_ Broken but standing \_\_\_ Broken, no longer standing \_\_\_  
Location of stones no longer standing \_\_\_\_\_

Restoration efforts, if any: Local watershed group is planning upon cleaning up cemetery and placing fence around it in the near future.

20. Please attach: 1) a copy of the topographic quadrangle map indicating the cemetery's location, and 2) general photograph(s) of the cemetery showing its setting and/or location. If you have any reference information about the cemetery (books, personal communication, etc.) please include a list.

Recorder: Jeff Davis Date: Feb 16, 2005

Address: WVSHPO Telephone Number: \_\_\_\_\_

Please return form to:  
Historic Preservation Office  
The Cultural Center  
1900 Kanawha Boulevard East  
Charleston, West Virginia 25305-0300

Thank you for your interest in the West Virginia  
Cemetery Survey.

FR# 03-616-MULTI

West Virginia Cemetery Survey Form

1. Site Number (OFFICE USE ONLY): 46 KA 416
2. Cemetery Name, Historic: Lower Donwood Cemetery Cemetery Name, Common: \_\_\_\_\_
3. County: Kanawha 4. 7.5' Quadrangle Name: Montgomery
5. UTM Zone: 17 Easting: 470 696 Northing: 4223 580
6. Location: On West side of Morris Creek, directly across from the mouth of Schuyler Fork. Cemetery is located directly above a massive cut stone wall. \*\*\*Note, cemetery is mis-marked on Montgomery Quadrangle\*\*\*
7. Ownership: Public: Municipal \_\_\_ County \_\_\_ State \_\_\_ Federal \_\_\_  
Private: Family \_\_\_ Church \_\_\_ Denomination \_\_\_\_\_  
Fraternal \_\_\_ Other Unknown-Possibly coal company
8. Burial Population : Approximately 150-200. Due to large size of cemetery and number of unmarked graves, it was impossible to determine exact population.
9. Predominant Surnames: Barron, Weese, Akers, Herman.
10. Mass Grave: Yes \_\_\_ No XX Explain: \_\_\_\_\_
11. Public Accessibility: Unrestricted XX  
Restricted \_\_\_  
For permission to visit, contact \_\_\_\_\_
12. Access into Cemetery: By foot XX By car \_\_\_
13. Terrain: Extremely steep side slope (with carved out benches) and slope bench.
14. Bounded by: Fence (Dilapidated metal fence) Wall \_\_\_ Hedge \_\_\_ Other \_\_\_\_\_
15. Condition: Well maintained \_\_\_ Poorly maintained \_\_\_ Overgrown, easily identifiable XX  
Overgrown, unidentifiable \_\_\_ Unidentifiable, but known to exist through tradition or other means (identify source) \_\_\_\_\_
16. Disturbances (describe): Neglect, weathering, possible mine subsidence
17. Cemetery Size and Orientation (please give dimensions in feet, and indicate compass direction for long and short axis): Approximately 2 acres East-West
18. Historical Background (use continuation sheet if necessary): Cemetery contains residents of Donwood. Burial population consists of African American and White Anglo-Saxon individuals. \*\*See Attached Sheet\*\*

Site Number: 46 KA 416

Cemetery Name: Lower Donwood Cemetery

19. Gravestones (Please list the number of gravestones that fit in the categories below. If this is a guess or an approximation, put "circa" before the number. Include photographs and/or sketches of representative decorative carvings.):

Number of headstones Unknown Number of burials 150-200 Footstones? Yes X No     

Number of gravestones with burial dates from the 18<sup>th</sup> century      19<sup>th</sup> century X  
20<sup>th</sup> century X 21<sup>st</sup> century     

Please list the earliest headstone date 1886 Most recent date 1971

Number of gravestones of each material: Slate X Marble X Granite X  
Sandstone X Fieldstone X  
Other 3-Steel (iron), Funeral Home Markers

Types of decorative carvings represented: Numerous including Finger, flowers

Number of gravestones that are: Readable      Eroded      Badly tilted       
Cracked/broken      Broken but standing      Broken, no longer standing       
Location of stones no longer standing     

Restoration efforts, if any:     

20. Please attach: 1) a copy of the topographic quadrangle map indicating the cemetery's location, and 2) general photograph(s) of the cemetery showing its setting and/or location. If you have any reference information about the cemetery (books, personal communication, etc.) please include a list.

Recorder: Jeff Davis Date: February 16, 2005

Address: WVSHPO

Please return form to:  
Historic Preservation Office  
The Cultural Center  
1900 Kanawha Boulevard East  
Charleston, West Virginia 25305-0300

Thank you for your interest in the West Virginia  
Cemetery Survey.

## Cemetery Continuation Sheet For 46 KA 416 (Lower Donwood Cemetery)

Cemetery covers approximately 2 acres in size, and is situated along the steep side slope of an unnamed drainage. Please note that this cemetery is mis-marked on the Montgomery Quadrangle. On the map it is shown approximately 1500 feet north of its actual location.

At the bottom of the cemetery is a mine grade/conveyor path. The slope base contains a massive cut stone wall measuring approx. 100 feet long and 15-20 feet in height. The wall steps down at either end. The entire cemetery floor is covered with Vinca Minor but also contain English Ivy and Yucca. Numerous mature trees are also present along with some cedar. The lower section of the cemetery sits atop a nature slope bench. Almost 80% of the graves here contain field stone markers, thus it appears that this is the older section of cemetery. The remaining graves are situated along the steep side slope. In several areas, the slope has been carved out create man made benches. At the western edge (top) of the cemetery a road is present which we believe was used during strip mining activities above. During road construction debris was pushed over the hillside including rocks, coal and dirt. Numerous grave shafts were found buried into the debris field (i.e. they were placed here after the road was built).

Within the cemetery four structures are present. Two contain partially collapsed rusticated concrete block wall located adjacent to numerous grave shafts, another is concrete, and the third is of cut sandstone. The cut sandstone structure is actually a fence (made of cut stone) that appears to be enclose a viewing platform, as it overlooks the cemetery. The concrete structure encloses approx. 5 graves. Numerous decorative iron fences and low stone walls are also present, isolating family and individual grave sites from the remaining cemetery.

As noted the cemetery contains approximately 150-200 graves. Due to the large number of un-marked grave shafts, and sheer size of the cemetery it was impossible to get an accurate count. Grave markings include marble, slate, sandstone, fieldstone, metal funeral home plaques along with three curved iron headstones. Below is a small listing of headstone readings:

Joe Leonard: 1889-1940, Henry Barron: WV CPL US Army 1908-1966, Fred

Thompson: WV PVT 802 Pioneer Inf. Jan 22, 1924, Elizabeth Dau. of J&C Chirgwin Nov. 26, 1905 11 years, Lizzie William: ?-- 1886, William Akers 1918-1918, J. Martin Mason S. Sgt. US Army WWII 1924-1951.

It should also be noted that many of the graves face to the north, and east.

### West Virginia Cemetery Survey Form

1. Site Number (OFFICE USE ONLY): 46 KA 417
2. Cemetery Name, Historic: Upper Donwood Cemetery Cemetery Name, Common: \_\_\_\_\_
3. County: Kanawha 4. 7.5' Quadrangle Name: Montgomery
5. UTM Zone: 17 Easting: 470 560 Northing: 4222 725
6. Location: On the West side of the access road, just above the mouth of Gibson Hollow, or approximately one half mile south of Schuyler Hollow/Shooting Range Road
7. Ownership: Public: Municipal \_\_\_\_\_ County \_\_\_\_\_ State \_\_\_\_\_ Federal \_\_\_\_\_  
Private: Family \_\_\_\_\_ Church \_\_\_\_\_ Denomination \_\_\_\_\_  
Fraternal \_\_\_\_\_ Other Unknown-possibly coal company
8. Burial Population : Unknown
9. Predominant Surnames: Armstrong, Dempsey, Duncan
10. Mass Grave: Yes \_\_\_\_\_ No X Explain: \_\_\_\_\_
11. Public Accessibility: Unrestricted X  
Restricted \_\_\_\_\_  
For permission to visit, contact \_\_\_\_\_
12. Access into Cemetery: By foot X By car \_\_\_\_\_
13. Terrain: Slope Bench and some side slope
14. Bounded by: Fence X Wall \_\_\_\_\_ Hedge \_\_\_\_\_ Other \_\_\_\_\_
15. Condition: Well maintained XX Poorly maintained \_\_\_\_\_ Overgrown, easily identifiable \_\_\_\_\_  
Overgrown, unidentifiable \_\_\_\_\_ Unidentifiable, but known to exist through tradition or other means (identify source) \_\_\_\_\_
16. Disturbances (describe): Local residents note that numerous graves were damaged during tippie removal. Graves are noted to be located outside of boundary fence within road and adjacent landform to the south.
17. Cemetery Size and Orientation (please give dimensions in feet, and indicate compass direction for

long and short axis): 1/2 acre

18. Historical Background (use continuation sheet if necessary): See Attached Sheet

Site Number: 46 KA 417 Cemetery Name: Upper Donwood Cemetery

---

19. Gravestones (Please list the number of gravestones that fit in the categories below. If this is a guess or an approximation, put "circa" before the number. Include photographs and/or sketches of representative decorative carvings.):

Number of headstones 4-marked\*\* Number of burials Unknown Footstones? Yes X No       
\*\*Headstone for Jake Adkins is in Memory of him-he is noted buried within cemetery.

Number of gravestones with burial dates from the 18<sup>th</sup> century      19<sup>th</sup> century       
20<sup>th</sup> century XX 21<sup>st</sup> century     

Please list the earliest headstone date 1914 Most recent date 1938

Number of gravestones of each material: Slate      Marble      Granite       
Sandstone      Fieldstone       
Other                     

Types of decorative carvings represented: Crown with Cross

---

Number of gravestones that are: Readable 3 Eroded Many Badly tilted       
Cracked/broken      Broken but standing      Broken, no longer standing       
Location of stones no longer standing                                     

Restoration efforts, if any: Local Residents have been clearing and repairing cemetery areas

20. Please attach: 1) a copy of the topographic quadrangle map indicating the cemetery's location, and 2) general photograph(s) of the cemetery showing its setting and/or location. If you have any reference information about the cemetery (books, personal communication, etc.) please include a list.

Recorder: Jeff Davis Date: Feb. 17, 2005

Address: WVSHPO Telephone Number:                     

---

Please return form to:  
Historic Preservation Office  
The Cultural Center  
1900 Kanawha Boulevard East  
Charleston, West Virginia 25305-0300

Thank you for your interest in the West Virginia  
Cemetery Survey.



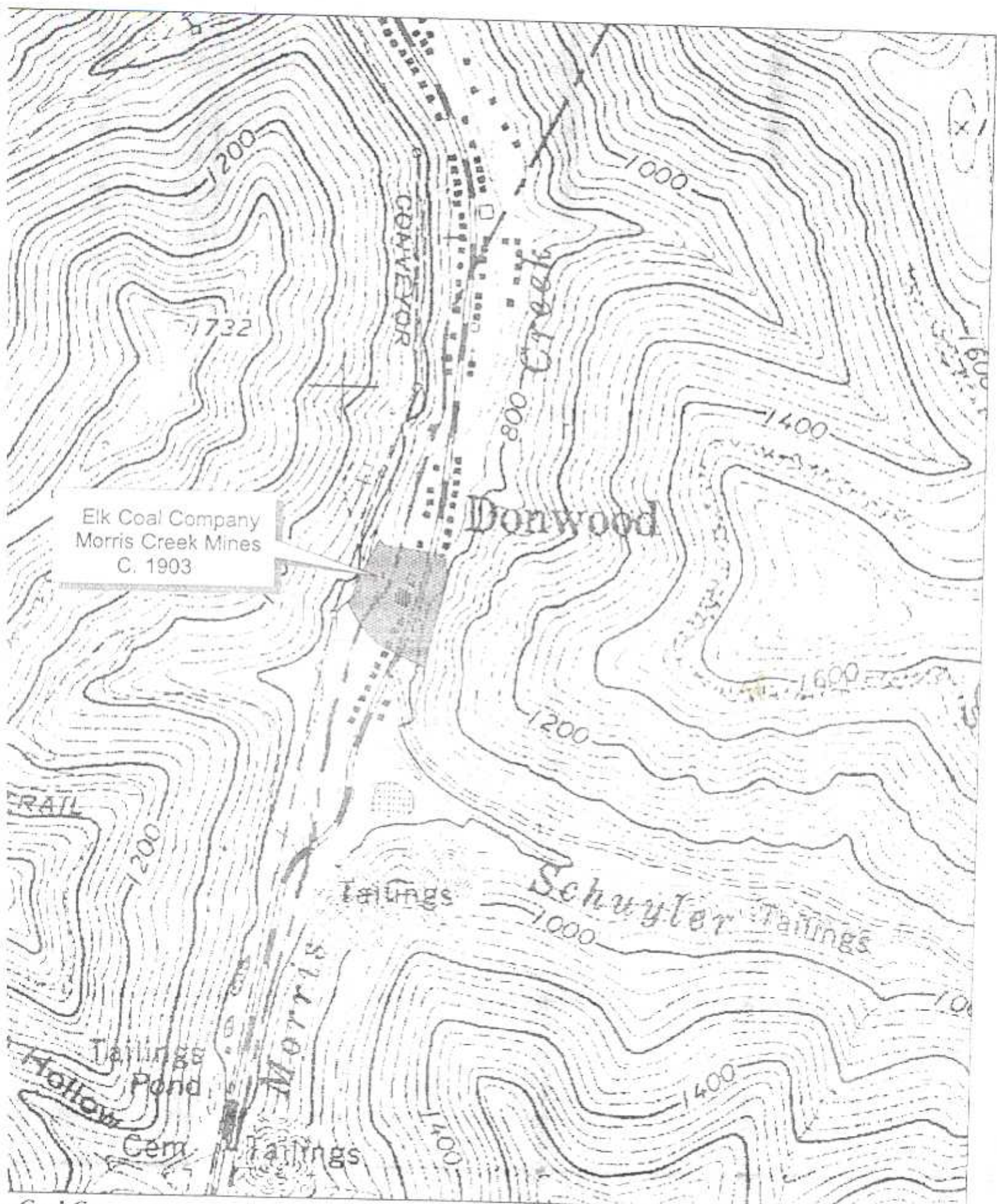
## Upper Donwood Cemetery-Additional Information Sheet

According to the local residents, James Armstrong, who died in 1914 is noted to have been a Union Leader for the United Mine Workers of America within the Morris Creek area. Mr. Armstrong was shot while attending a Union meeting within the local school. Mr. Armstrong's headstone is highly decorative blue slate? that contains a crown and cross, along the words UMWA.

The grave marker for Jake Akers, according to the local residents, is a marker in memory of his life only, as he is not buried within the cemetery. His grave site is noted to be on the mountain near the head of the unmarked drainage located directly across from Gibson Hollow. At this location there is suppose to be the cut stone remains of his cabin. His body is buried near the cabin remains. It is not known if his "actual" grave site is marked or not.

Additional known burials include; James Dempsey 1914-1918 (concrete headstone), Anna Belle Duncan 1900-1938 (Marble). Many other headstone are present and are of field stone.

Local residents also note that graves are located outside of the fenced boundary. Their headstone and possible coffins were destroyed when the coal company removed the tipple and bulldozed the area. Graves are noted to have been located where the cemetery access road is located and within the flat landform located to the south-toward the main access road.



Elk Coal Company  
Morris Creek Mines  
C. 1903

Elk Coal Company  
Morris Creek Mines

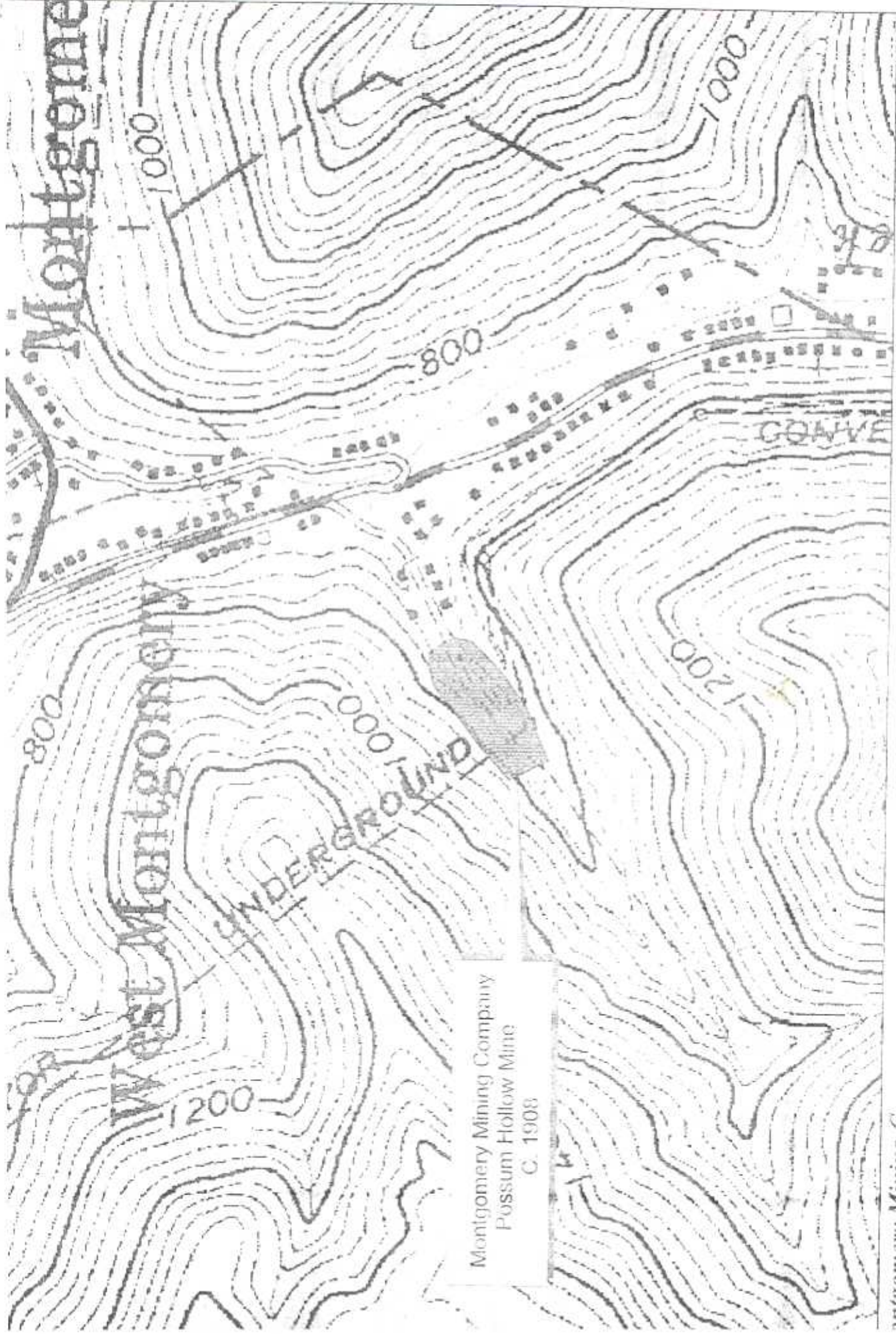
Geological Location  
Geological Quadrangle  
Printed 3/07/2005

88 0 88 176 Meters



1:8829

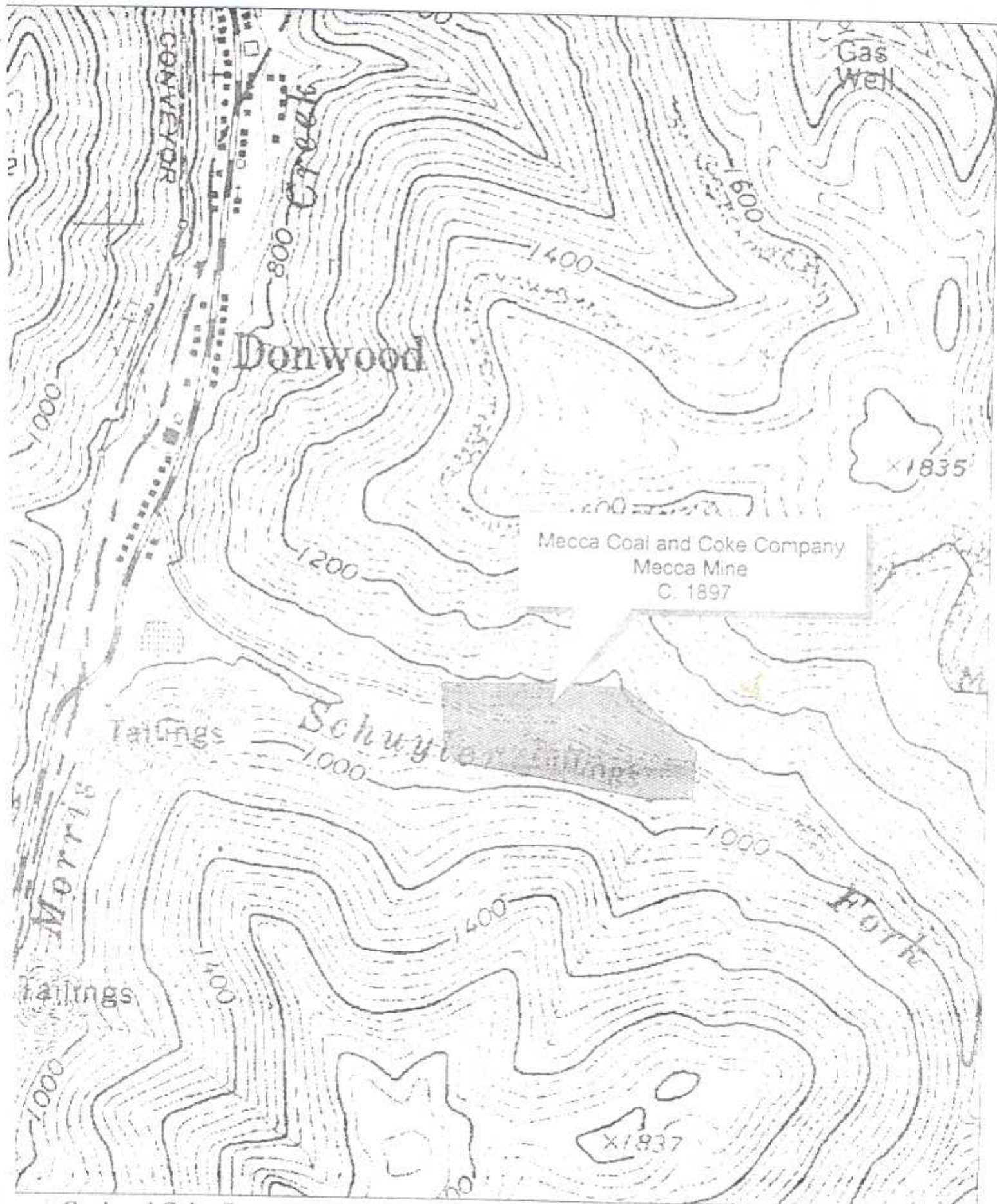




Montgomery Mining Company  
Possum Hollow Mine  
C. 1908

Montgomery Mining Company  
Possum Hollow Mine C. 1908

Original Location  
Montgomery Geographic  
printed 3/10/2005



Mecca Coal and Coke Company  
Mecca Mine C. 1897

Geological Location  
Topographic Quadrangle  
printed 3/07/2005

88 0 88 176 Meters



1:8829





Euroka Coal and Coke Company  
Mines No. 2 and 5  
C. 1902

Euroka Coal and Coke Company  
Mines No. 2 and 5 C. 1902

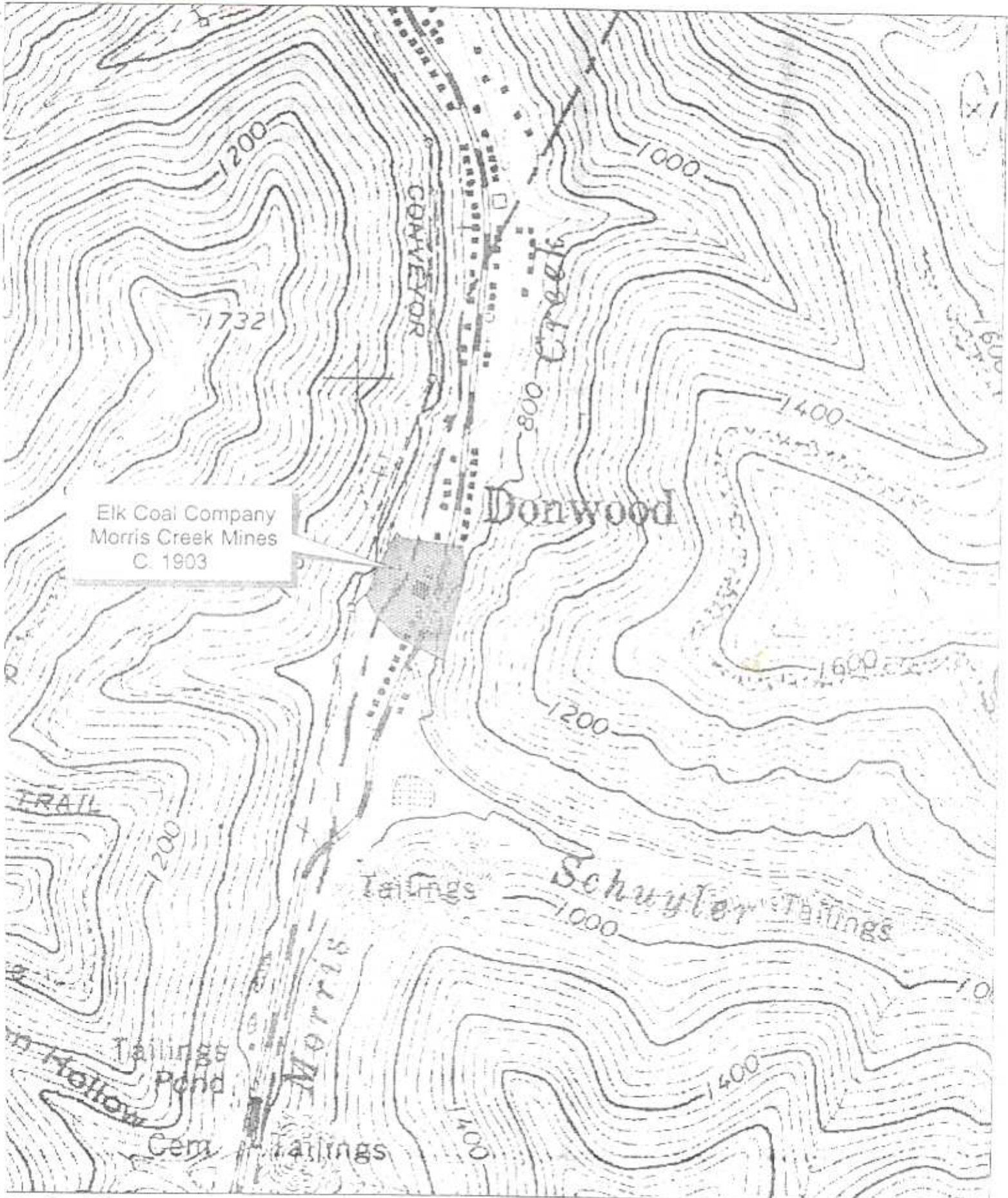
Vertical Location  
Anglemery (back-angle)  
Printed 3.0.1902

88 0 88 176 Meters



1:8829



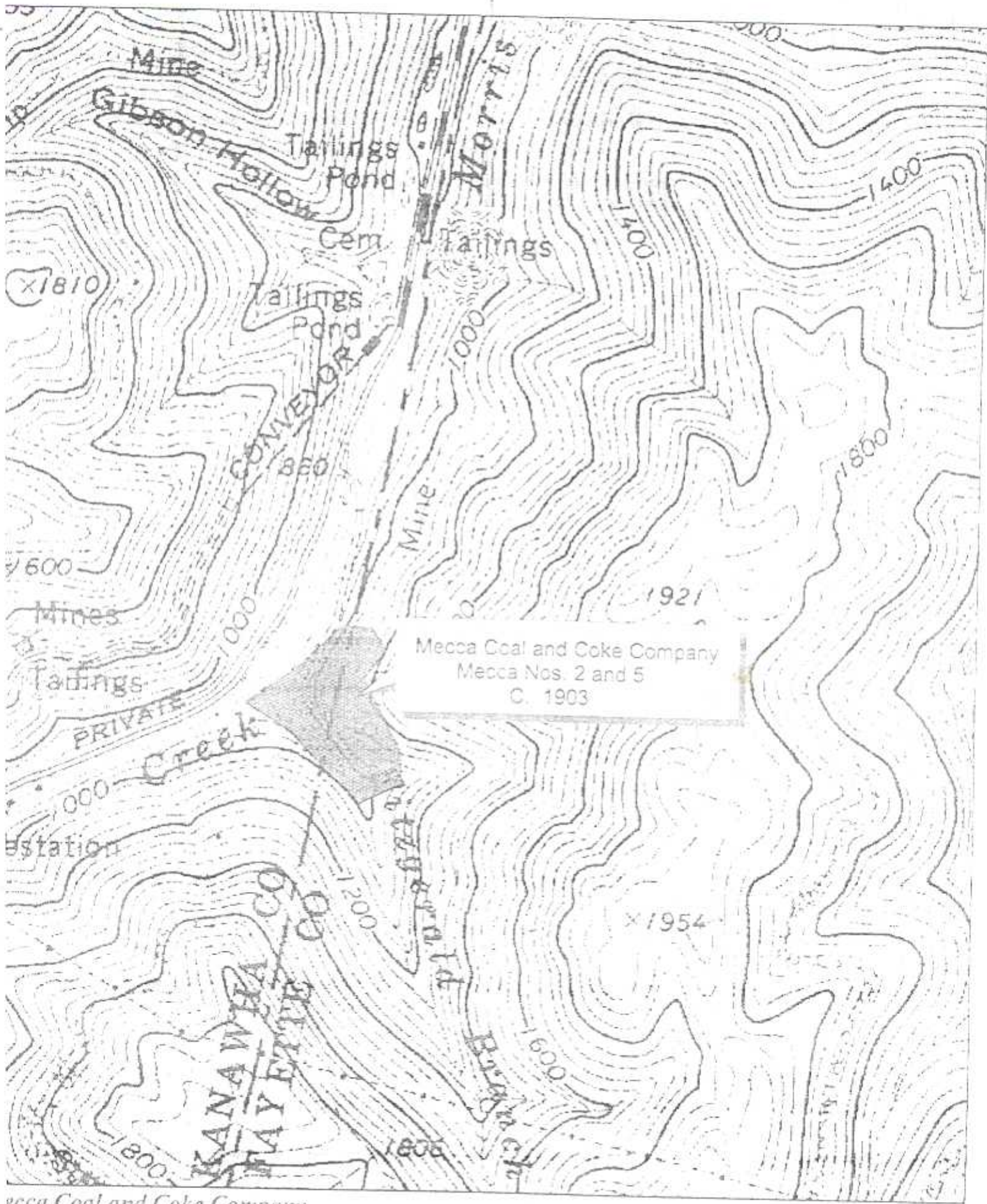


Elk Coal Company  
 Morris Creek Mines  
 General Location  
 Montgomery Quadrangle



Λ





Mecca Coal and Coke Company  
 Nos. 2 and 5 C. 1903

General Location  
 Montgomery Quadrangle



1:8829







Coal Valley Coal Company  
 Coal Valley Mine C. 1876

Coal Location  
 Montgomery, Quadrangle C. 1976

119 0 119 238 Meters



1:11926

