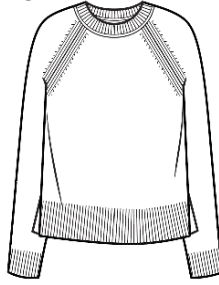


L2154
WHSL \$115

100% Cashmere
Montauk Raglan Pullover

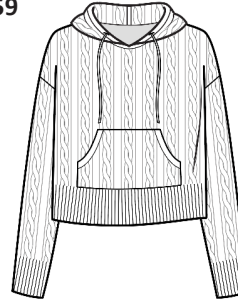
2ply 7gg
Sizes: XS - XL
Body Length: 23"
Long Sleeve, Side Slits
100% Cashmere Color Card



L2165
WHSL \$159

100% Cashmere
Dover Boxy Cable Hoodie

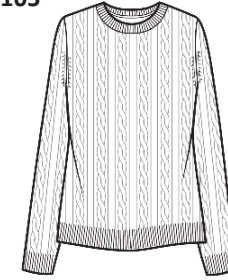
2ply 7gg
Sizes: XS - XL
Body Length: 22"
Long Sleeve, Pocket, Drawstrings
100% Cashmere Color Card



L2110
WHSL \$105

100% Cashmere
Breezy Cable Pullover

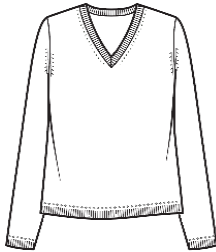
2ply 7gg
Sizes: XS - XL
Body Length: 24 1/2"
Long Sleeve, Crew Neck
100% Cashmere Color Card



LC2005
WHSL \$39

Cotton & Cashmere
Classic V-Neck Pullover

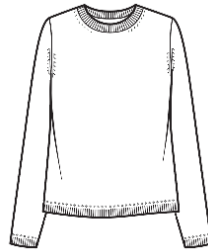
2ply 12gg
Sizes: XS - XL
Body Length: 24 1/2"
Long Sleeve, V-Neck
Cotton & Cashmere Color Card



LC2006
WHSL \$39

Cotton & Cashmere
Classic Crew Neck Pullover

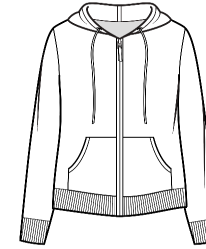
2ply 12gg
Sizes: XS - XL
Body Length: 24 1/2"
Long Sleeve, Crew Neck
Cotton & Cashmere Color Card



LC1118
WHSL \$89

Cotton & Cashmere
Terry Stitch Zip Hoodie

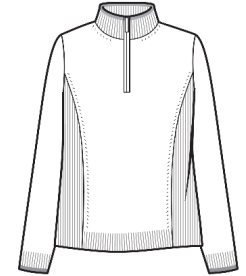
2ply 9gg
Sizes: XS - XL
Body Length: 24"
Long Sleeve, Full Zip, Hoodie, Pockets
Cotton & Cashmere Color Card



LC2043
WHSL \$55

Cotton & Cashmere
Tee Time Half Zip Pullover

2ply 12gg
Sizes: XS - XL
Body Length: 25"
Long Sleeve, Zip, Rib Detail, Mock Collar
Cotton & Cashmere Color Card w/
White Tipping



LC2228
WHSL \$66

Cotton & Cashmere
Birdseye 1/2 Zip Pullover

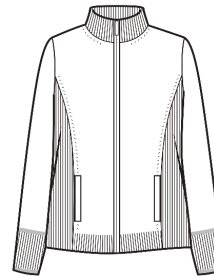
2ply 12gg
Sizes: XS - XL
Body Length: 23"
Long Sleeve, Zip, Rib Detail, Mock Neck
Cotton & Cashmere Color Card w/
White Birdseye and Tipping



LC1028
WHSL \$59

Cotton & Cashmere
Fairway Full Zip Mock Neck

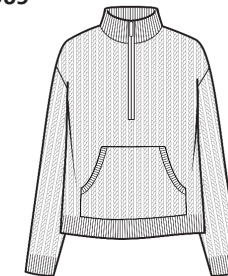
2ply 12gg
Sizes: XS - XL
Body Length: 25"
Long Sleeve, Zip, Rib Detail, Pockets
Cotton & Cashmere Color Card w/
White Tipping



LC2248
WHSL \$69

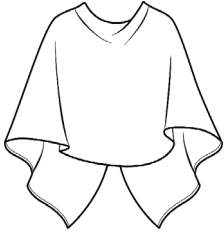
Cotton & Cashmere
Rory 1/2 Zip Cable

2ply 12gg
Sizes: XS - XL
Body Length: 24"
Long Sleeve, Zip, Mock Neck, Pocket
Cotton & Cashmere Color Card



100% Cashmere
"The" Dress Topper

LS1346
WHSL \$58



2ply 7gg
Sizes: One Size
Body Length: 20"
Elbow Length Opening
Multiple Ways to Wear
100% Cashmere Color Card

100% Cashmere
"The" Pearl Trim Topper

LS8341
WHSL \$79

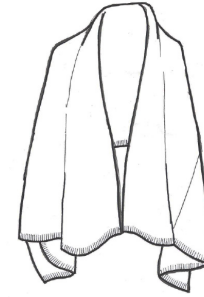


2ply 7gg
Sizes: One Size
Body Length: 20"
Elbow Length Opening
Multiple Ways to Wear
Available for Pre-Order in any Color
on the 100% Cashmere Color Card

← **Colors Stocked for LS8341:**
Body & pearl trim :
Beach Pink - 7966
Blue Horizon - 2304
Ebony - 237
Graphite - 256
Midnight - 1207
Opal - 2306
White - 1700

100% Cashmere
Breezy Travel Wrap

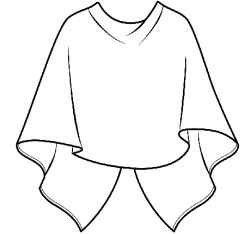
LF8369
WHSL \$75



2ply 5gg
Sizes: One Size
Size: 80" x 32"
Multiple Ways to Wear
100% Cashmere Color Card

Cotton & Cashmere
"The" Trade Wind Dress Topper

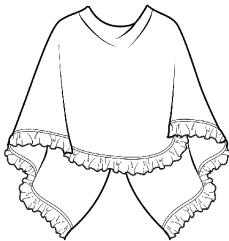
LSC1501
WHSL \$32



2ply 12gg
Sizes: One Size
Body Length: 20"
Elbow Length Opening
Multiple Ways to Wear
Cotton & Cashmere Color Card

Cotton & Cashmere
Mini Ruffle Edge Topper

LC3021
WHSL \$ 44



2ply 12gg
Sizes: One Size
Body Length: 20" w/o ruffle
Elbow Length Opening
Multiple Ways to Wear
Cotton & Cashmere Color Card

Cotton & Cashmere
Tassel Trim Topper

LSC833
WHSL \$44



2ply 7gg
Sizes: One Size
Body Length: 20" w/o tassels
Elbow Length Opening
Multiple Ways to Wear
Available for Pre-Order in any Color
on the Cotton & Cashmere Color Card

← **Colors Stocked for LSC833:**
Antigua - 2301
Ash - 236
Bermuda Pink - 7344
Cruise Blue - 904
Dune - 2316
Ebony - 237
Lavender Ice - 1920
Malibu Pink - 1751
Midnight - 1207
Mineral - 7286
Pink Sugar - 7824
Steel - 1735
Weekend Blue - 7394
White - 1700
Windswept - 2532

Cotton & Cashmere
Textured Mini Ruffle Topper

LC3065
WHSL \$59

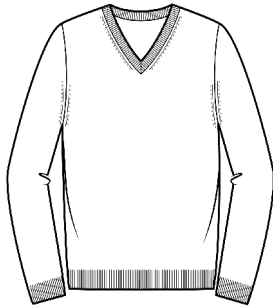


2ply 12gg
Sizes: One Size
Body Length: 20" w/o ruffle
Elbow Length Opening
Multiple Ways to Wear
Cotton & Cashmere Color Card

M1463
WHSL \$159

100% Cashmere
Classic V-Neck Pullover

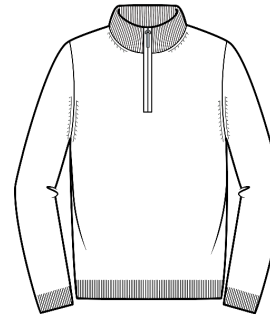
2ply 12gg
 Sizes: S - XXL
 100% Cashmere Color Card



MC0212
WHSL \$56

Cotton & Cashmere
1/4 Zip Mock Neck Pullover

2ply 12gg
 Sizes: S - XXL
 100% Cashmere Color Card



MC2020
WHSL \$59

Cotton & Cashmere
Zip Neck Polo Short Sleeve

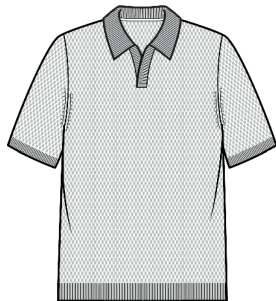
2ply 7gg
 Sizes: S - XXL
 Cotton & Cashmere Color Card w/
 White Tipping and White Binding on
 the Inside Back Neck



MC2021
WHSL \$56

Cotton & Cashmere
Birdseye Polo Short Sleeve

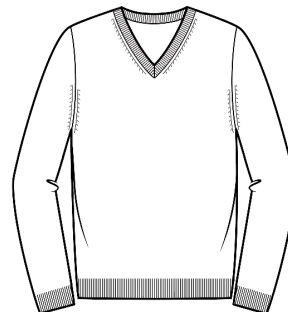
2ply 7gg
 Sizes: S - XXL
 Cotton & Cashmere Color Card w/
 White Mixed in Birdseye and White
 Binding on the Inside Back Neck



MC725
WHSL \$46

Cotton & Cashmere
Classic V-Neck Pullover

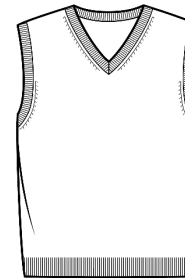
2ply 12gg
 Sizes: S - XXL
 Cotton & Cashmere Color Card



MC1477
WHSL \$39

Cotton & Cashmere
Classic V-Neck Vest

2ply 12gg
 Sizes: S - XXL
 Cotton & Cashmere Color Card



MC2003
WHSL \$59

Cotton & Cashmere
Birdseye 1/4 Zip Mock Neck

2ply 12gg
 Sizes: S - XXL
 Cotton & Cashmere Color Card w/
 White Mixed in Birdseye

