

**L2168**  
WHSL \$135

**100% Cashmere**  
**Emilia Crew w/ Jersey Roll**



2ply 7gg  
Sizes: One Size  
**Body Length:** 23"  
Long Sleeve, Crew Neck, Side Slits  
100% Cashmere Color Card

**L2104**  
WHSL \$109


**100% Cashmere**  
**Laid Back Crew Tee**



2ply 7gg  
Sizes: One Size  
**Body Length:** 25"  
Elbow Sleeve Length, Relaxed Fit, Side Slits  
100% Cashmere Color Card

**LS1346**  
WHSL \$58

**100% Cashmere**  
**"The" Dress Topper**



2ply 7gg  
Sizes: One Size  
**Body Length:** 20"  
Elbow Length Opening  
Multiple Ways to Wear  
100% Cashmere Color Card

**LS8341**  
WHSL \$79

**100% Cashmere**  
**"The" Pearl Trim Topper**



2ply 7gg  
Sizes: One Size  
**Body Length:** 20"  
Elbow Length Opening  
Multiple Ways to Wear  
Available for Pre-Order in any Color  
on the 100% Cashmere Color Card

← **Colors Stocked for LS8341:**  
Beach Pink - 7966  
Blue Horizon - 2304  
Ebony - 237  
Graphite - 256  
Midnight - 1207  
Opal - 2306  
White - 1700

**L3018**  
WHSL \$96

**100% Cashmere**  
**Ribbed Mini Topper**



2ply 7gg  
Sizes: One Size  
**Body Length:** 17"  
Above Elbow Length Opening  
Multiple Ways to Wear  
100% Cashmere Color Card

**L3029**  
WHSL \$109

**100% Cashmere**  
**Fish Net Mini Topper**



2ply 7gg  
Sizes: One Size  
**Body Length:** 17"  
Above Elbow Length Opening  
Multiple Ways to Wear  
100% Cashmere Color Card

**L3027**  
WHSL \$109

**100% Cashmere**  
**Vertical Cable Topper**



2ply 7gg  
Sizes: One Size  
**Body Length:** 20"  
Elbow Length Opening  
Multiple Ways to Wear  
100% Cashmere Color Card

**L3030**  
WHSL \$109

**100% Cashmere**  
**Directional Rib Topper**



2ply 7gg  
Sizes: One Size  
**Body Length:** 20"  
Elbow Length Opening  
Multiple Ways to Wear  
100% Cashmere Color Card

**LF8369**  
WHSL \$75

**100% Cashmere**  
**Breezy Travel Wrap**



2ply 5gg  
Sizes: One Size  
Size: 80" x 32"  
Multiple Ways to Wear  
100% Cashmere Color Card

**LF7435**  
WHSL \$129


**100% Cashmere**  
**Luxe Travel Wrap**



2ply 7gg  
Sizes: One Size  
Size: 80" x 32"  
Multiple Ways to Wear  
100% Cashmere Color Card

**LF7115**  
WHSL \$109

**100% Cashmere**  
**Envelope Wrap**



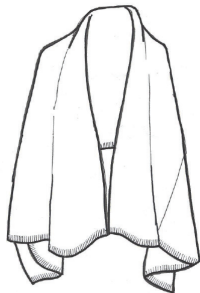
2ply 7gg  
Sizes: One Size  
**Body Length:** 33" as worn  
3/4 Armhole Opening  
Available for Pre-Order in any Color  
on the 100% Cashmere Color Card

← **Colors Stocked for LF7115:**  
Ash - 236  
Beach Pink - 7966  
Block Island - 7856  
Dune - 2316  
Ebony - 237  
Graphite - 256  
Indigo - 7405  
Mongolian Cream - 451  
Natural - 352  
Snow - 229  
White - 1700

LS4002  
WHSL \$48

**Silk & Cashmere**  
Silky Travel Wrap

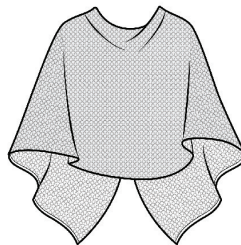
2ply 5gg  
Sizes: One Size  
Size: 80" x 32"  
Multiple Ways to Wear  
Silk & Cashmere Color Card



LC3066  
WHSL \$49

**Cotton & Cashmere**  
Plaited Reversible Mesh Topper

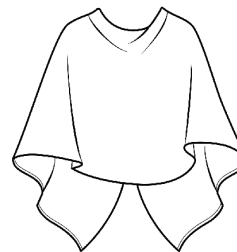
4ply 7gg  
Sizes: One Size  
Body Length: 20"  
Elbow Length Opening  
Multiple Ways to Wear  
Offered in All Plaited Reversible Colors



LSC1501  
WHSL \$32

**Cotton & Cashmere**  
"The" Trade Wind Dress Topper

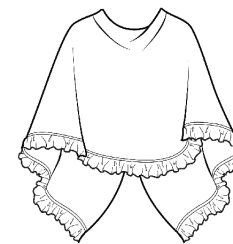
2ply 12gg  
Sizes: One Size  
Body Length: 20"  
Elbow Length Opening  
Multiple Ways to Wear  
Cotton & Cashmere Color Card



LC3021  
WHSL \$44

**Cotton & Cashmere**  
Mini Ruffle Edge Topper

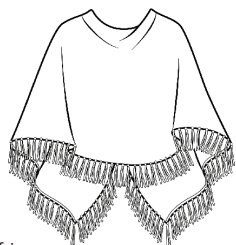
2ply 12gg  
Sizes: One Size  
Body Length: 20" w/o ruffle  
Elbow Length Opening  
Multiple Ways to Wear  
Cotton & Cashmere Color Card



LSC1501F  
WHSL \$45

**Cotton & Cashmere**  
Trade Wind Fringe Topper

2ply 12gg  
Sizes: One Size  
Body Length: 20" w/o fringe  
Elbow Length Opening  
Multiple Ways to Wear  
Available for Pre-Order in any Color  
on the Cotton & Cashmere Color Card

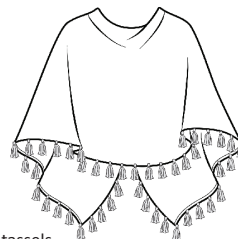


← Colors Stocked for LSC1501F:  
Antigua - 2301  
Ash - 236  
Ebony - 237  
Fog - 8229  
Midnight - 1207  
Palm Beach - 2535  
White - 1700

LSC833  
WHSL \$44

**Cotton & Cashmere**  
Tassel Trim Topper

2ply 7gg  
Sizes: One Size  
Body Length: 20" w/o tassels  
Elbow Length Opening  
Multiple Ways to Wear  
Available for Pre-Order in any Color  
on the Cotton & Cashmere Color Card

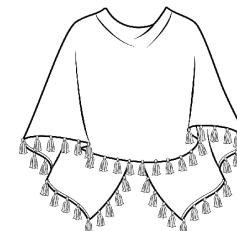


← Colors Stocked for LSC833:  
Antigua - 2301  
Ash - 236  
Bermuda Pink - 7344  
Cruise Blue - 904  
Dune - 2316  
Ebony - 237  
Lavender Ice - 1920  
Malibu Pink - 1751  
Midnight - 1207  
Mineral - 7286  
Pink Sugar - 7824  
Steel - 1735  
Weekend Blue - 7394  
White - 1700  
Windswept - 2532

LSC936  
WHSL \$47

**Cotton & Cashmere**  
Festive Tassel Trim Topper

2ply 7gg  
Sizes: One Size  
Body Length: 20" w/o tassels  
Elbow Length Opening  
Multiple Ways to Wear



← Colors Stocked for LSC936:  
Abyss & Turq Combo - 8339  
Aegean Combo - 7999  
Malibu Combo - 7626  
Midnight Combo - 7624  
Pink Sugar Combo - 8338  
White Combo - 7625

LC4025  
WHSL \$59

**Cotton & Cashmere**  
Ruffle Trim Mini Travel Wrap

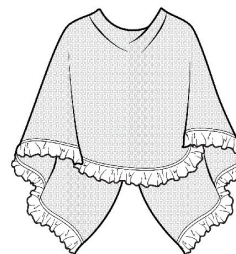
2ply 12gg  
Sizes: One Size  
Size: 78" x 28"  
Multiple Ways to Wear  
Cotton & Cashmere Color Card



LC3065  
WHSL \$59

**Cotton & Cashmere**  
Textured Mini Ruffle Topper

2ply 12gg  
Sizes: One Size  
Body Length: 20" w/o ruffle  
Elbow Length Opening  
Multiple Ways to Wear  
Cotton & Cashmere Color Card



LC3067  
WHSL \$49

**Cotton & Cashmere**  
Reversible Swirl Topper

2ply 7gg  
Sizes: One Size  
Body Length: 20"  
Elbow Length Opening  
Multiple Ways to Wear  
Cotton & Cashmere Colors w/ White

