

RIBADI

Constructora

Más de 30 años construyendo juntos



Who we are

About us

We are Constructora RIBADI, a Mexican company founded in Aculco, State of Mexico. With more than 30 years of experience in the national market, we offer comprehensive solutions for construction projects — covering everything from land preparation to the building of specialized structures.

We have an outstanding team of dedicated professionals, including engineers, surveyors, urban planners, operators, and administrative staff.

Our commitment to quality and innovation has allowed us to maintain high standards in every project, adapting to the specific needs of our clients and exceeding their expectations.

At RIBADI, every project is an opportunity to demonstrate our dedication and professionalism, ensuring durable and excellent results.





Mission

To design and build earthworks, foundations, and metal-structure buildings, always prioritizing quality and excellence, hand in hand with our dedicated team of collaborators.

Vision

To be a nationally and internationally recognized company in the design and construction of industrial, commercial, and residential projects — providing innovative solutions for our clients through cutting-edge technology and a highly skilled team.

Values

Respect – Commitment – Quality – Excellence – Punctuality

Our services

Earthworks

We specialize in earthworks and land movement, performing clearing, leveling, and excavation to prepare the terrain according to the specific requirements of each project. Our team of professionals, together with high-performance machinery, ensures precise and efficient work, whether for road construction or building foundations.

Foundations & civil works

Regarding foundations, we develop solid and durable bases that adapt to the soil characteristics, providing stability and safety for any type of construction. Our experience in this field ensures that every project — from industrial buildings to complex infrastructures — is supported by strong and high-quality foundations.

In addition, we specialize in constructing robust walls that provide support and insulation, as well as maneuvering yards that optimize handling and logistics in industrial and commercial environments

Cold storage Warehouses

We are experts in the design and construction of cold storage warehouses, providing tailored solutions for each project's specific needs.

Our team of professionals, supported by high-performance machinery, ensures precise and efficient work — from site preparation and foundation construction to the assembly of insulated structures — guaranteeing optimal conditions for the

Roads and highways

We focus on the construction of roads and highways, using high-quality materials to ensure durability and strength. Every project is executed according to the highest standards, delivering functional designs that enhance and optimize transportation infrastructure.

Steel structures

Another of our areas of expertise is the construction of buildings with steel structures, known for their rapid assembly and high strength. These structures are ideal for industrial facilities, shopping centers, and warehouses.

Equipment rental

To complement our services, we offer the rental of specialized machinery, from excavators and cranes to compactors and backhoes. Our fleet of equipment is available to optimize any type of construction project, ensuring maximum efficiency and reduced execution times.



Roads and highways

Projects

- Road Improvement; Seal Coat and Asphalt Pavement Repair: Pavement repair and seal coat application on the section from Boulevard Manuel del Mazo to the deviation. Ejido La Soledad, Aculco, State of Mexico (2010).
- Road Surfacing: Toxhie Community, Aculco, State of Mexico (2010).
- Sub-Collector No. 2: From Coca Cola to La Soledad Barrio, Aculco, State of Mexico (2010).
- Modernization and Expansion of San Lucas Totolmaloya Road: From kilometer 0+000 to 2+427.35. Aculco, State of Mexico (2010).
- Modernization and Expansion of San Lucas Totolmaloya Road: From Paraje el Diez to the Pan-American Highway (Toluca - Querétaro), from kilometer 0+000 to kilometer 4+200; section to be modernized from kilometer 2+100 to kilometer 3+920. Aculco, State of Mexico (2011).
- Road Improvement with Asphalt Pavement and Seal Coat: Bañe, Aculco, State of Mexico (2011).
- Road Improvement with Asphalt Pavement and Two Seal Coats: San Antonio, Arroyo Zarco, State of Mexico (2011).
- Road Improvement with Asphalt Pavement: Gunyo Poniente, Aculco, State of Mexico (2012).
- Road Improvement with Two Seal Coats: Cabresteros, Aculco, State of Mexico (2012).
- Modernization and Expansion of the Colonia Beltran - La Finca Road: From kilometer 0+000 to 2+400. San Marco Tlazpalpan, San Bartolo Morelos (2013).
- Modernization and Expansion of E.C. Tenango - Ixatapan de La Sal Highway: From kilometer 0+000 to 1+547, kilometer 13.1 section. San Pedro Tlanixco, Tenango el Valle, State of Mexico (2014).
- Paving, 1,500 m²: San Miguel de Allende, Guanajuato, for Derivados de Leche Esmeralda (2014).



Cold storage warehouses

Full projects (earthworks, steel structures, civil works)

- Cold Storage Warehouse for FRIALSA, 54,000 m²: Santiago de Querétaro, Querétaro (2024–2025).
- Cold Storage Warehouse for FRIALSA, 58,000 m²: Tepeji del Río, Hidalgo (2017).
- Cold Storage Warehouse for FRIALSA, 20,000 m²: Apodaca, Nuevo León (2022–2025).
- Cold Storage Warehouse for FRIALSA, 40,000 m²: Manzanillo, Colima (2023–2024).
- Cold Storage Warehouse for FRIALSA, 60,000 m²: Guadalajara, Jalisco (2025).
- Cold Storage Warehouse for FRIALSA, 24,000 m²: Ciudad Obregón, Sonora (2023).

Industrial facilities and buildings

Full projects (earthworks, steel structures, civil works)

- Municipal Market, 4,200 m²: Aculco, State of Mexico.
- Lienzo Charro, 4,000 m²: Aculco, State of Mexico.
- Industrial Facility for Intersow, 7,500 m²: State of Mexico.
- Industrial Facility for Intersow, 5,000 m²: State of Mexico.
- Industrial Facility for Almacenadora Sur, 6,000 m²: Puebla.
- Industrial Facility for DRT Construcciones, 8,500 m²: Aculco, State of Mexico.
- Industrial Facility, 10,000 m²: San Juan del Río, Querétaro.
- Industrial Facility for UNITEC, 30,000 m²: (1995).
- Industrial Facility for Grupo CONTRI, 18,000 m²: (2000).

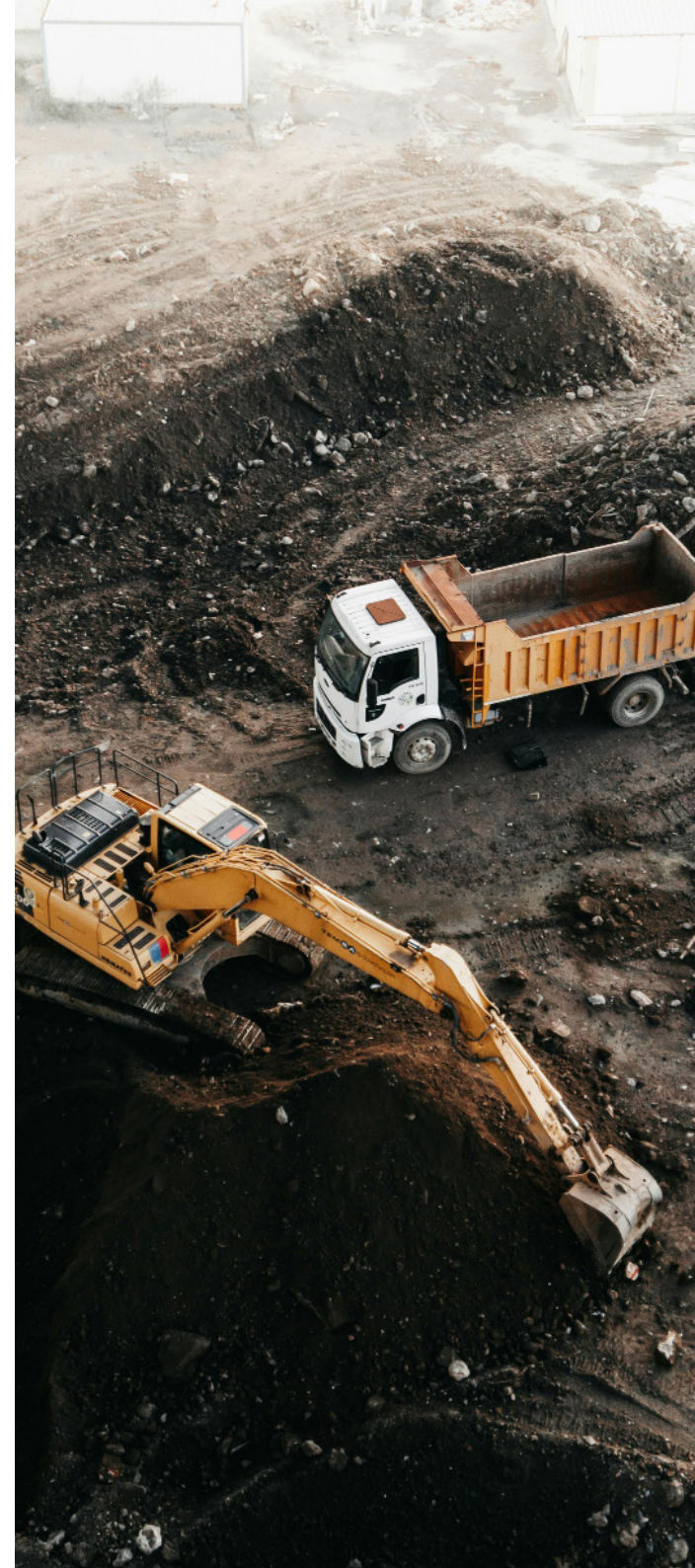


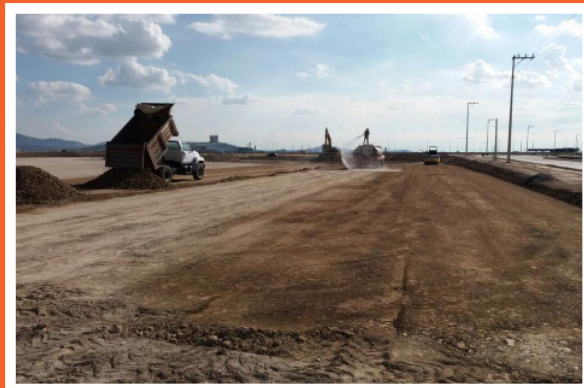
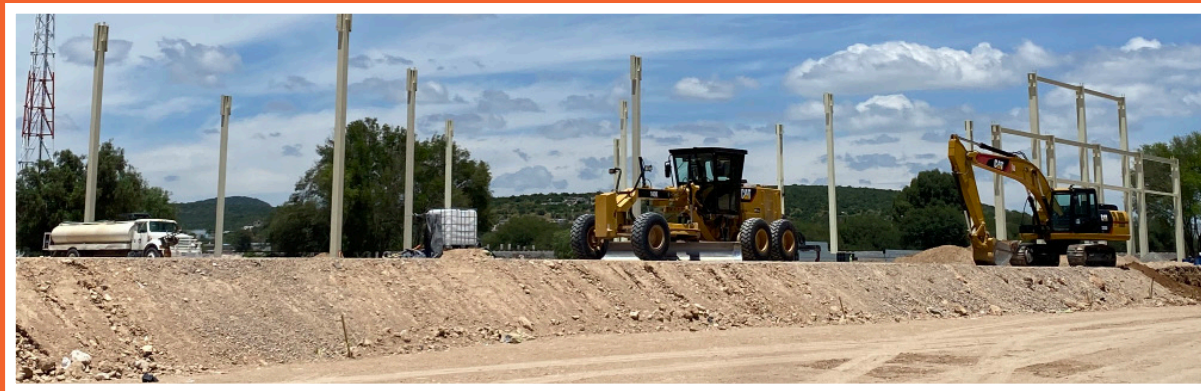
Earthworks

Projects

- Earthworks and Concrete Floors, 6,000 m²: Temascalcingo, State of Mexico.
- Earthworks, 6,500 m²: Zamora, Michoacán.
- Earthworks, 1,800 m², CITROFUT Plant: Martínez de la Torre, Veracruz.
- Earthworks and Asphalt Pavement, 3,000 m²: San Miguel de Allende, Guanajuato.
- Earthworks, 2,000 m²: Cuautitlán Izcalli, Mexico City.
- Earthworks, 4,000 m²: Atitalaquia, State of Mexico.

At RIBADI, our commitment to excellence, innovation, and safety — backed by over 30 years of experience and compliance with regulations such as the Specialized Service Providers Registry (REPSE) — positions us as a reliable partner in infrastructure construction. We take pride in continuing to build Mexico's future, providing comprehensive solutions that ensure our clients' satisfaction and trust in every project.





CONSTRUCTORA



RIBADI

**Ignacio Espinosa No. 107
Col. Centro, Aculco, Estado de México, C.P. 50360**

**contacto@ribadi.com.mx
www.ribadi.com.mx**

**427 273 7067
427 120 9483**