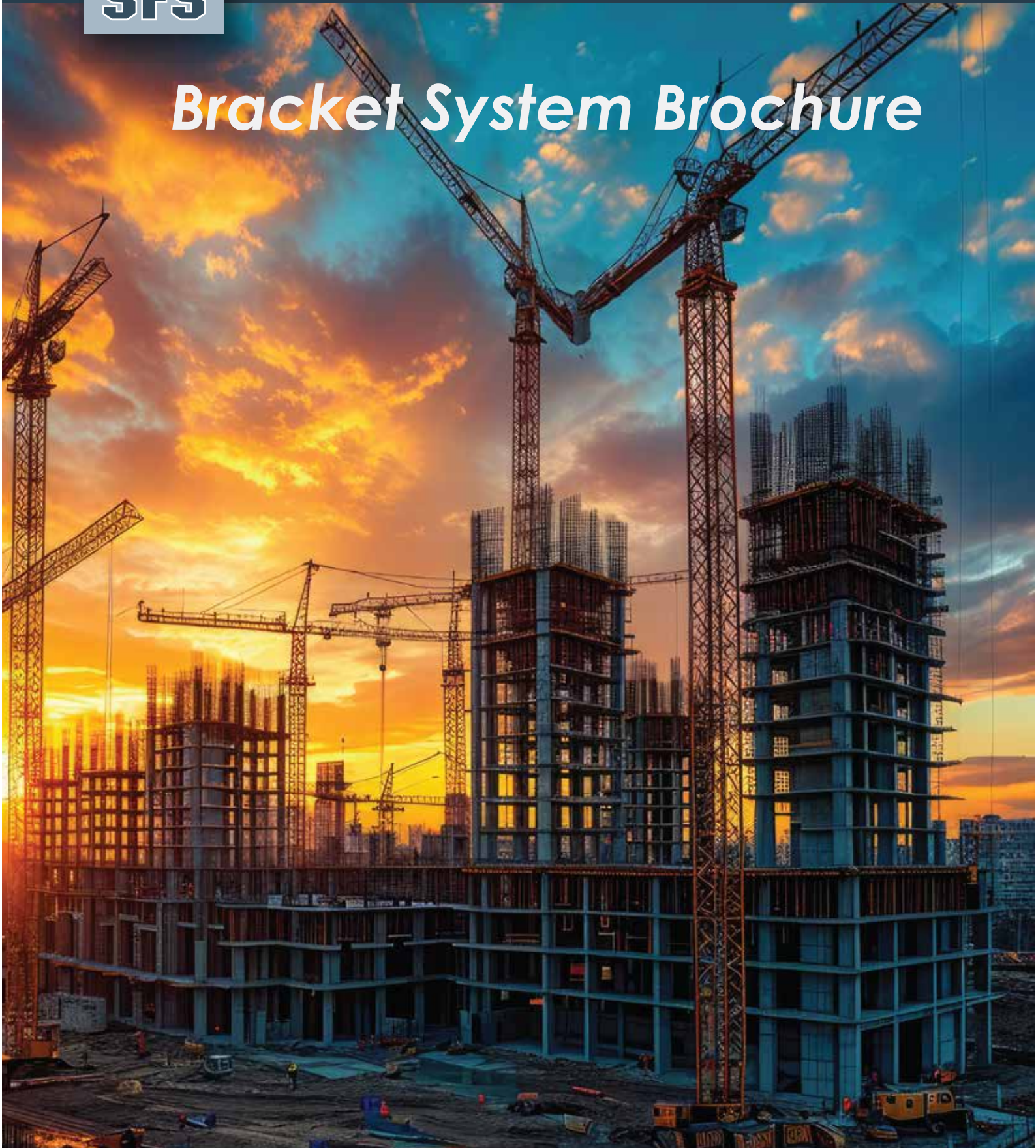




SUPERIOR FORMING SOLUTIONS LTD

Super-Form™  
Formwork Systems

# Bracket System Brochure



• S A F E R • F A S T E R • S U S T A I N A B L E

**Superior Forming Solutions Ltd.**

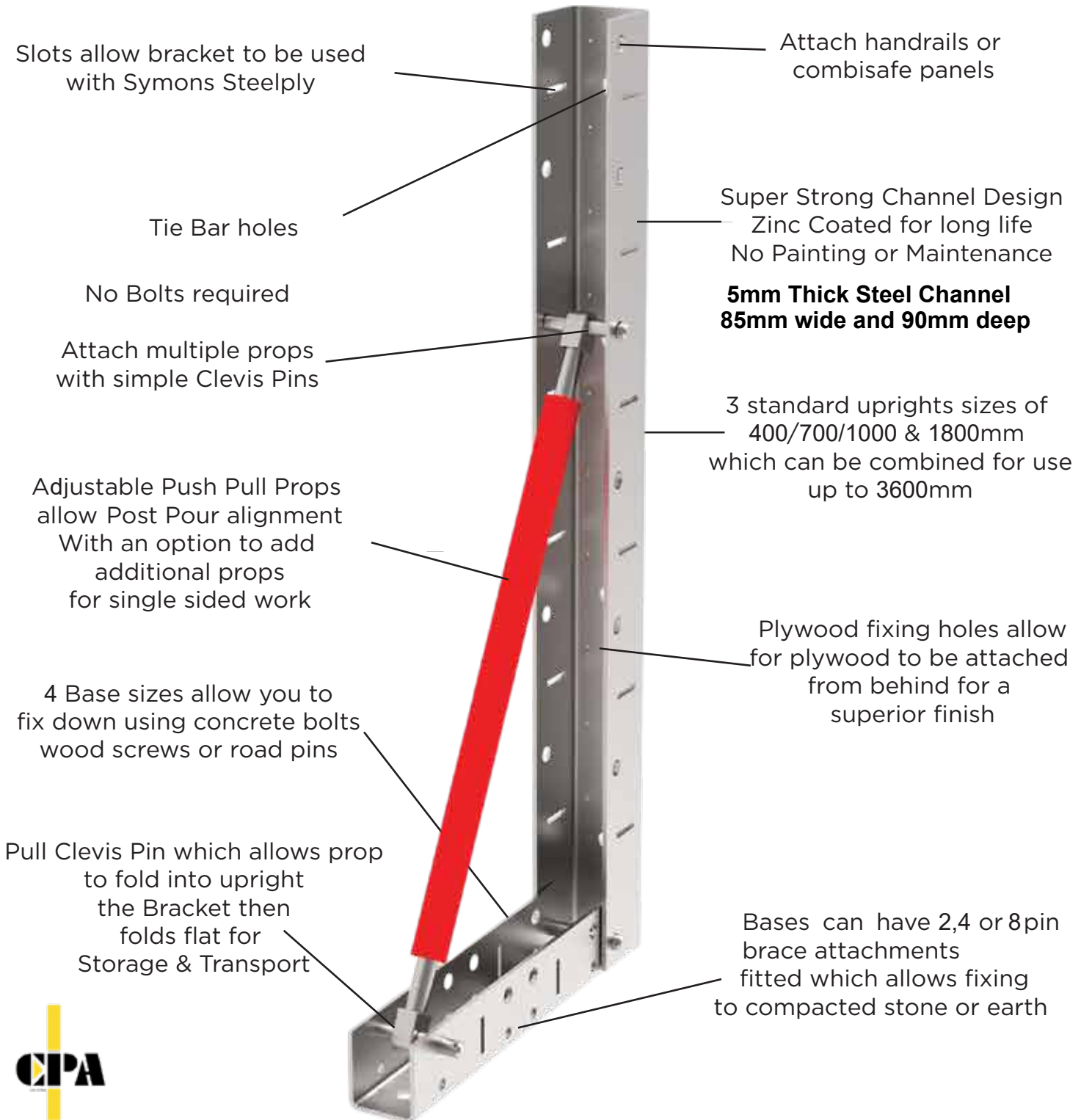
t: 0330 0437 870 e: [sales@super-form.co.uk](mailto:sales@super-form.co.uk) w: [www.super-form.co.uk](http://www.super-form.co.uk) [www.roadform.uk](http://www.roadform.uk)  
2nd Floor College House, 17 King Edwards Road, Ruislip, London, HA4 7AE



SUPERIOR FORMING SOLUTIONS LTD

# Super-Form™ Formwork Systems

## The Super-Form™ Bracket System



Members of the CPA  
Construction Plant Hire Association

Copyright Superior Forming Solutions Ltd, Patent Pending

• S A F E R • F A S T E R • S U S T A I N A B L E  
**Superior Forming Solutions Ltd.**

t: 0330 0437 870 e: sales@super-form.co.uk w: www.super-form.co.uk www.roadform.uk  
2nd Floor College House, 17 King Edwards Road, Ruislip, London, HA4 7AE



SUPERIOR FORMING SOLUTIONS LTD

# Super-Form™ Formwork Systems

## MAIN FEATURES

THE STRONGEST, FASTEST & MOST FLEXIBLE FORMWORK SYSTEM ON THE MARKET

AVAILABLE TO RENT OR BUY

NO BOLTS, SIMPLE CLEVIS PINS WITH CLIPS, SO NO TOOLS NEEDED

FOLDS FLAT FOR STORAGE & FOR LOW COST TRANSPORTATION

ADJUSTABLE PUSH PULL PROP ALLOWS POST POUR ADJUSTMENT

COMES IN 4 HANDY BRACKET SIZES 400/700/1000 & 1800mm  
CAN BE JOINED TO MAKE 14 HEIGHTS UP TO 3600 MM HIGH

4 BASES SIZES 85 / 230 / 420mm & 800mm

BASE & UPRIGHTS ARE ALL INTERCHANGEABLE AND SO OFFER HUNDREDS OF  
COMBINATIONS FOR ANY TYPE OF CONCRETE POUR OR GROUND CONDITION

POUR STRAIGHT OR RADIUS SLABS, BASES, WALLS & SHEET PILE CAPPING BEAMS

MULTIPLE USES, CAN BE USED AS A FORMWORK SYSTEM ON ITS OWN OR AS  
AN ADJUSTABLE PROP FOR TIMBER FORMWORK OR WITH SYMONS STEEL PLY

BETTER FINISH THAN A PANEL SYSTEM, LIGHTER AND MORE FLEXIBLE

STRONG 5MM THICK ZINC COATED CHANNEL DESIGN, WON'T RUST

ABILITY TO ADD TIE BARS FOR BEAMS AND WALL POURS

EASILY ATTACH HANDRAILS OR EVEN COMBISAFE PANELS ON SLAB EDGE POURS

FIX BASES DOWN WITH CONCRETE BOLTS / WOOD SCREWS OR ROAD PINS

CUTS CARBON USE BY UP TO 80%, CUTS WASTAGE AND TIMBER USE

**COSTS 60% LESS PER M2 THAN TIMBER FORMWORK OVERALL**

**WE WON'T BE BEATEN ON PRICE, WE WILL  
BEAT ANY GENUINE LIKE FOR LIKE QUOTE !**

• S A F E R • F A S T E R • S U S T A I N A B L E

**Superior Forming Solutions Ltd.**

t: 0330 0437 870 e: sales@super-form.co.uk w: www.super-form.co.uk www.roadform.uk  
2nd Floor College House, 17 King Edwards Road, Ruislip, London, HA4 7AE



SUPERIOR FORMING SOLUTIONS LTD

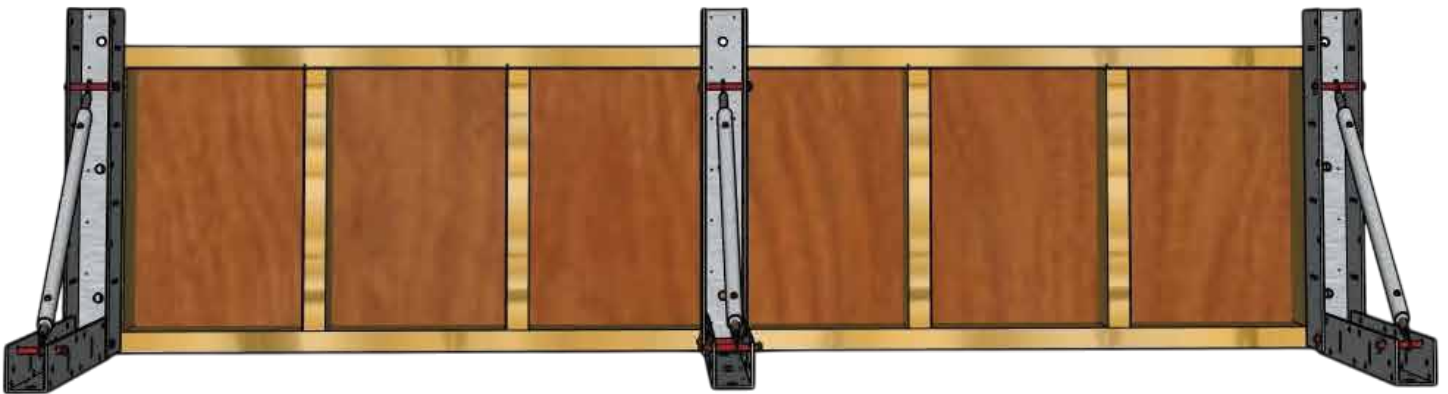
# Super-Form™ Formwork Systems

## MAIN USES

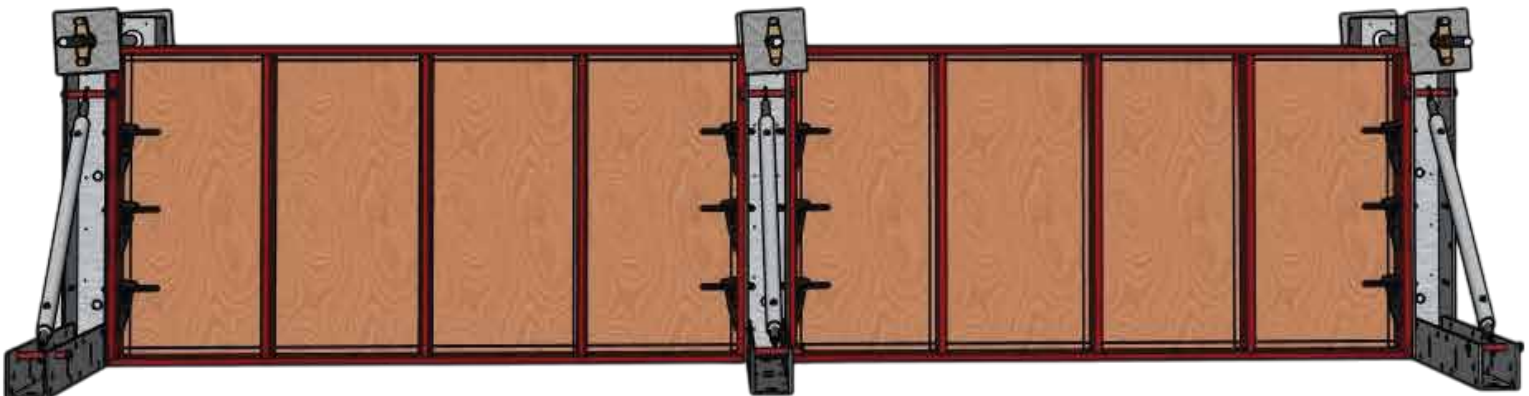
On its own at 488-688mm centres, simply fix down, plumb up, add ply & pour concrete  
**NO Formwork to make! Faster than Timber formwork and gives cost savings of 60%**



Works with timber formwork at up to 1200mm centres (option to add tie bars & handrails)  
allows post pour alignment, stops uplift, faster & more efficient than timber props



With Symons Steelply, can be used at up to 1500mm centres (option to add tie bars & handrails)  
**Stronger, adjustable propping and no snap ties needed!**



Copyright Superior Forming Solutions Ltd, Patent Pending

• S A F E R • F A S T E R • S U S T A I N A B L E  
**Superior Forming Solutions Ltd.**

t: 0330 0437 870 e: sales@super-form.co.uk w: www.super-form.co.uk www.roadform.uk  
2nd Floor College House, 17 King Edwards Road, Ruislip, London, HA4 7AE

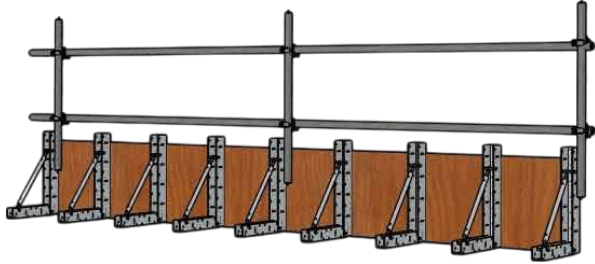


SUPERIOR FORMING SOLUTIONS LTD

# Super-Form™ Formwork Systems

## SUPER-FORM™ IN USE

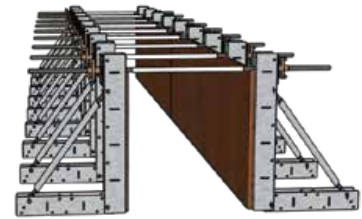
Slab edge with handrail, ability to attach tube & fitting or Combisafe style handrails  
Fix down with Concrete bolts to slabs & Blinding



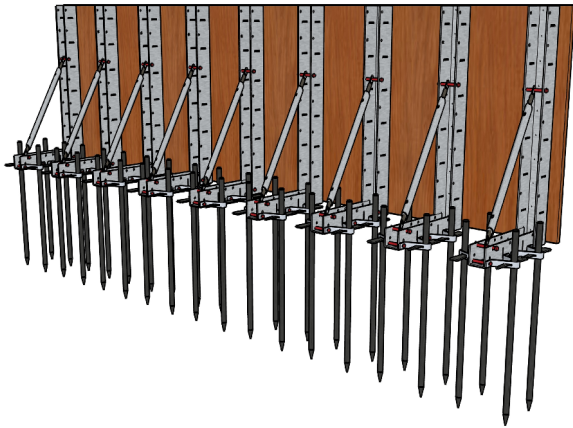
Radius or irregular shapes no problem



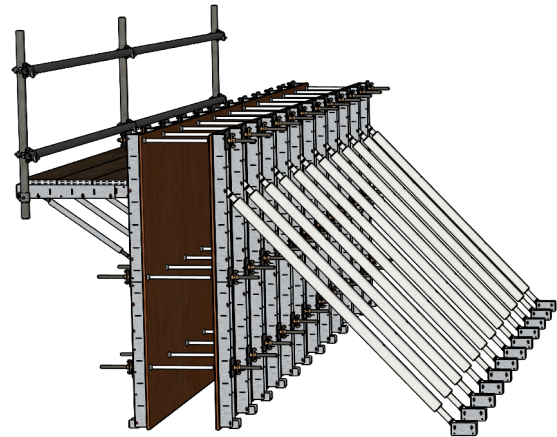
Beams & Walls with OPTIONAL Tie Bars over



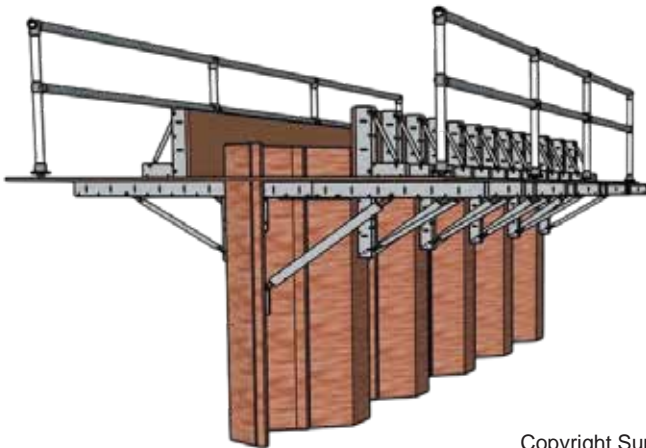
Fix down to Stone or Earth with Road Pins



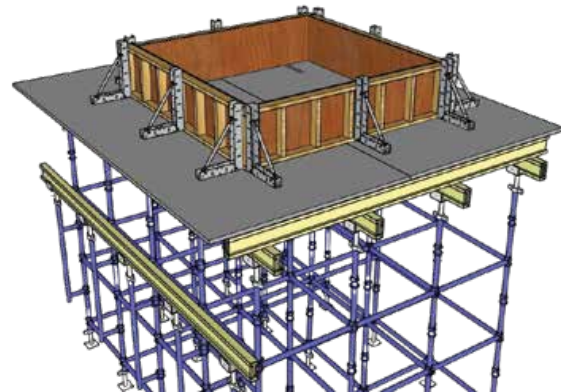
Single & Double Sided Walls with Access



Sheet pile capping beams soffit & sides with handrails



On Decking / Falsework fit with wood screws



Copyright Superior Forming Solutions Ltd, Patent Pending

• S A F E R • F A S T E R • S U S T A I N A B L E  
**Superior Forming Solutions Ltd.**

t: 0330 0437 870 e: sales@super-form.co.uk w: www.super-form.co.uk www.roadform.uk  
2nd Floor College House, 17 King Edwards Road, Ruislip, London, HA4 7AE



SUPERIOR FORMING SOLUTIONS LTD

# Super-Form™ Formwork Systems

X Large Upright  
1800 mm  
(1825mm when  
on base)

## UPRIGHTS

Just 8 main components

4 base sizes (Optional Pin Braces)

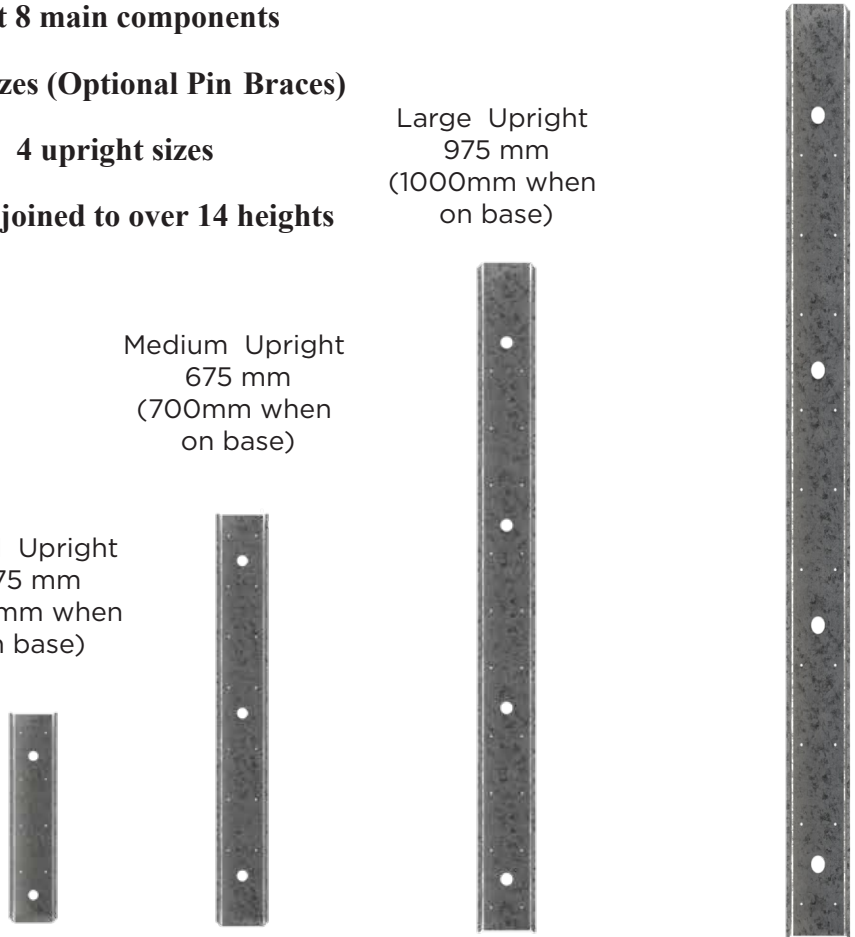
4 upright sizes

Can be joined to over 14 heights

Large Upright  
975 mm  
(1000mm when  
on base)

Medium Upright  
675 mm  
(700mm when  
on base)

Small Upright  
375 mm  
(400mm when  
on base)



### STANDARD SIZES:

Description	mm / Inches
Small	400mm / 16"
Medium	700mm / 28"
Large	1000mm / 40"
X large	1800mm / 71"

### JOINED SIZES:

Description	mm / Inches
Small/Small	400mm / 16"
Small/Med	1075mm / 42"
Small/Large	1375mm / 54"
Small/X Large	2200mm / 87"

Med/Small	1075mm / 40"
Med/Med	1387mm / 55"
Med/Large	1675mm / 66"
Med/X Large	2500mm / 99"

Large/Small	1375mm / 54"
Large/Med	1675mm / 66"
Large/Large	1975mm / 78"
Large/X Large	2800mm / 110"

X large/Small	2200mm / 75"
X large/Med	2500mm / 99"
X large/Large	2800mm / 110"
X large/ XL	3625mm / 143"

Joined brackets may need additional props.

## BASES

Small base just 85mm fits inside upright channel for tight spaces and wall applications

Medium Base 230mm (Left) with optional pin brace attachments shown (Right)

Large Base 420mm (Left) with optional pin brace attachments shown (Right)

Also used as a joining section between 2 uprights

X Large Base 800mm (Left) with up to 8 optional pin brace attachments NOT SHOWN

Medium



Large



Copyright Superior Forming Solutions Ltd, Patent Pending

• S A F E R • F A S T E R • S U S T A I N A B L E

**Superior Forming Solutions Ltd.**

t: 0330 0437 870 e: sales@super-form.co.uk w: www.super-form.co.uk www.roadform.uk  
2nd Floor College House, 17 King Edwards Road, Ruislip, London, HA4 7AE



SUPERIOR FORMING SOLUTIONS LTD

# Super-Form™ Formwork Systems

## MUTIPLE CONFIGURATIONS

Standard brackets come in Small 400mm / Medium 700mm & Large 1000mm as Standard

Fix down with concrete bolts, wood screws or road pins or add additional pin brace attachments

## BASE EXAMPLES

Small bases just 85mm  
can be used on all  
uprights with detached prop

Medium bases just 230mm  
used on Small & Medium  
brackets as standard

Large bases just 420mm  
used on Medium & Large  
brackets as standard



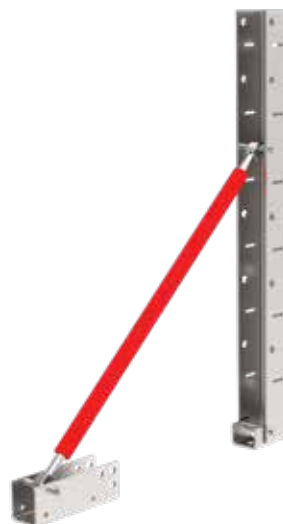
## CONFIGURATION EXAMPLES

Option to add additional  
pin brace attachments  
2 or 8 per bracket  
Ideal for compacted ground

Option to use  
Medium base with a  
detached base  
with pin braces

Option to use  
Small base  
with detached  
base & prop

Option to join Uprights  
(2 x Large uprights shown)  
Ability to detach bases  
and use additional props shown



Copyright Superior Forming Solutions Ltd, Patent Pending

• S A F E R • F A S T E R • S U S T A I N A B L E

**Superior Forming Solutions Ltd.**

t: 0330 0437 870 e: sales@super-form.co.uk w: www.super-form.co.uk www.roadform.uk  
2nd Floor College House, 17 King Edwards Road, Ruislip, London, HA4 7AE



SUPERIOR FORMING SOLUTIONS LTD

# Super-Form™ Formwork Systems

## STANDARD BRACKETS

Small bracket  
400mm (H) x 230 (D)  
(Medium base)



Medium bracket  
700mm (H) x 230 (D)  
(Medium base)



Large bracket  
1000mm (H) x 420 (D)  
(Large base)



X Large bracket  
1800mm (H) x 800 (D)  
(X Large base)



## TRANSPORTATION

We offer low cost delivery on the UK palletised network, 3 day delivery is standard we also offer Next Day Delivery options as well as delivery on our own trucks

Brackets fold flat for transport  
Small / Medium & Large shown



Stillage packed for Delivery



Copyright Superior Forming Solutions Ltd, Patent Pending

• S A F E R • F A S T E R • S U S T A I N A B L E  
**Superior Forming Solutions Ltd.**

t: 0330 0437 870 e: sales@super-form.co.uk w: www.super-form.co.uk www.roadform.uk  
2nd Floor College House, 17 King Edwards Road, Ruislip, London, HA4 7AE



SUPERIOR FORMING SOLUTIONS LTD

# Super-Form™ Formwork Systems



**SUPER-FORM™** THE UK'S NO.1  
FOR FORMWORK HIRE & SALES

SHOWN:

Small Bracket 400mm

Medium Bracket 700mm

Large Bracket 1000mm

Large & Medium Joined 1675mm

Large & Large Joined 1975mm

Large folded for transport

Other sizes and heights Available

X Large Bracket 1800mm

14 size options from 400mm  
to 3625mm



**Location:** UK Concrete Show 2026

**Description:** Small / Medium / Large / Large & Medium / Large & Large

[www.super-form.co.uk](http://www.super-form.co.uk) / [www.roadform.uk](http://www.roadform.uk)

SAFER ■ FASTER ■ SUSTAINABLE



SUPERIOR FORMING SOLUTIONS LTD

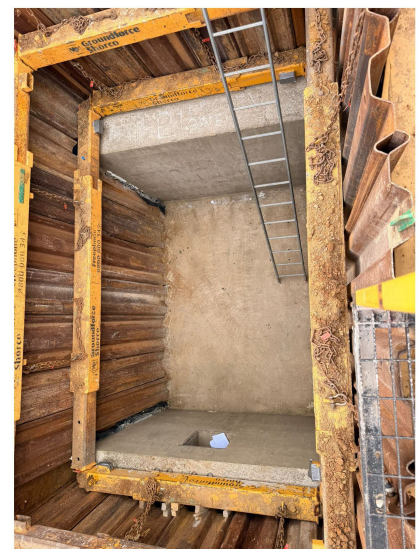
# Super-Form™ Formwork Systems



## SUPER-FORM™ THE UK'S NO.1 FOR FORMWORK HIRE & SALES



Super-Form Large Bracket, joined with large Upright for 2m pour height



**Location:** Barrat Homes Site, Aylesford, Kent, CLIENT: Projex One Ltd



**Description:** 2 x 1.8m High Single Sided Thrust Block Walls, Erected in 4 hours, poured the next day in 1 hour! (2m per hour rate of rise), Stripped day after (3 days)

[www.super-form.co.uk](http://www.super-form.co.uk) / [www.roadform.uk](http://www.roadform.uk)

SAFER ■ FASTER ■ SUSTAINABLE



SUPERIOR FORMING SOLUTIONS LTD

# Super-Form™ Formwork Systems



## SUPER-FORM™ THE UK'S NO.1 FOR FORMWORK HIRE & SALES



**Location:** Scunthorpe, Residential Client with limited formwork experience.

**Description:** 2m High Single Sided Retaining wall, Large bracket extended to 2m, with standard props on our Medium base, tie bars are for the next 1.7m pour on top.

[www.super-form.co.uk](http://www.super-form.co.uk) / [www.roadform.uk](http://www.roadform.uk)

SAFER ■ FASTER ■ SUSTAINABLE



SUPERIOR FORMING SOLUTIONS LTD

# Super-Form™ Formwork Systems



## SUPER-FORM™ THE UK'S NO.1 FOR FORMWORK HIRE & SALES



These brackets surpassed my expectations, easy and stronger than I thought they would be. I've been shuttering for 16 years with System and timber but for base work this is outstanding. Everyone from the main contractor and the contractor I'm working for are well impressed.

Thomas Scott

Director  
TRS Formwork Ltd  
Dundee, Scotland



**Location:** Perth High School, Perth, Scotland

**Description:** Slabs and steps, customer had timber formwork already and so Super-Form™ used to brace existing formwork.

[www.super-form.co.uk](http://www.super-form.co.uk) / [www.roadform.uk](http://www.roadform.uk)

SAFER ■ FASTER ■ SUSTAINABLE



SUPERIOR FORMING SOLUTIONS LTD

# Super-Form™ Formwork Systems



**SUPER-FORM™** THE UK'S NO.1  
FOR FORMWORK HIRE & SALES



*'The shutters are very nice, I'm coveting a few other sizes now to keep for hiring out as well...watch this space!'*

*Simon Ham*

*Director*



[www.marsonham.co.uk](http://www.marsonham.co.uk)

**Location:** Tenbury Wells

**Description:** Sales of 250mm Road Forms & Ply Infiles

[www.super-form.co.uk](http://www.super-form.co.uk) / [www.roadform.uk](http://www.roadform.uk)

SAFER ■ FASTER ■ SUSTAINABLE



SUPERIOR FORMING SOLUTIONS LTD

# Super-Form™ Formwork Systems



**SUPER-FORM™** THE UK'S NO.1  
FOR FORMWORK HIRE & SALES



1.2m High X 2.4m Wide x .4m Headwall.

Large Bracket with standard base one side bolted to concrete slab, with a Large bracket with Small Base (Wall Configuration) on the other side, bolted to slab and held with a tie bar. (Note plywood extended 200mm above bracket)

Erected in less than an hour and poured straight away in 10 minutes right to the top.

**Location:** Grimsby, Development of Executive houses

**Description:** Dyke Retaining Headwall for St James Executive Developments Ltd

[www.super-form.co.uk](http://www.super-form.co.uk) / [www.roadform.uk](http://www.roadform.uk)

SAFER ■ FASTER ■ SUSTAINABLE