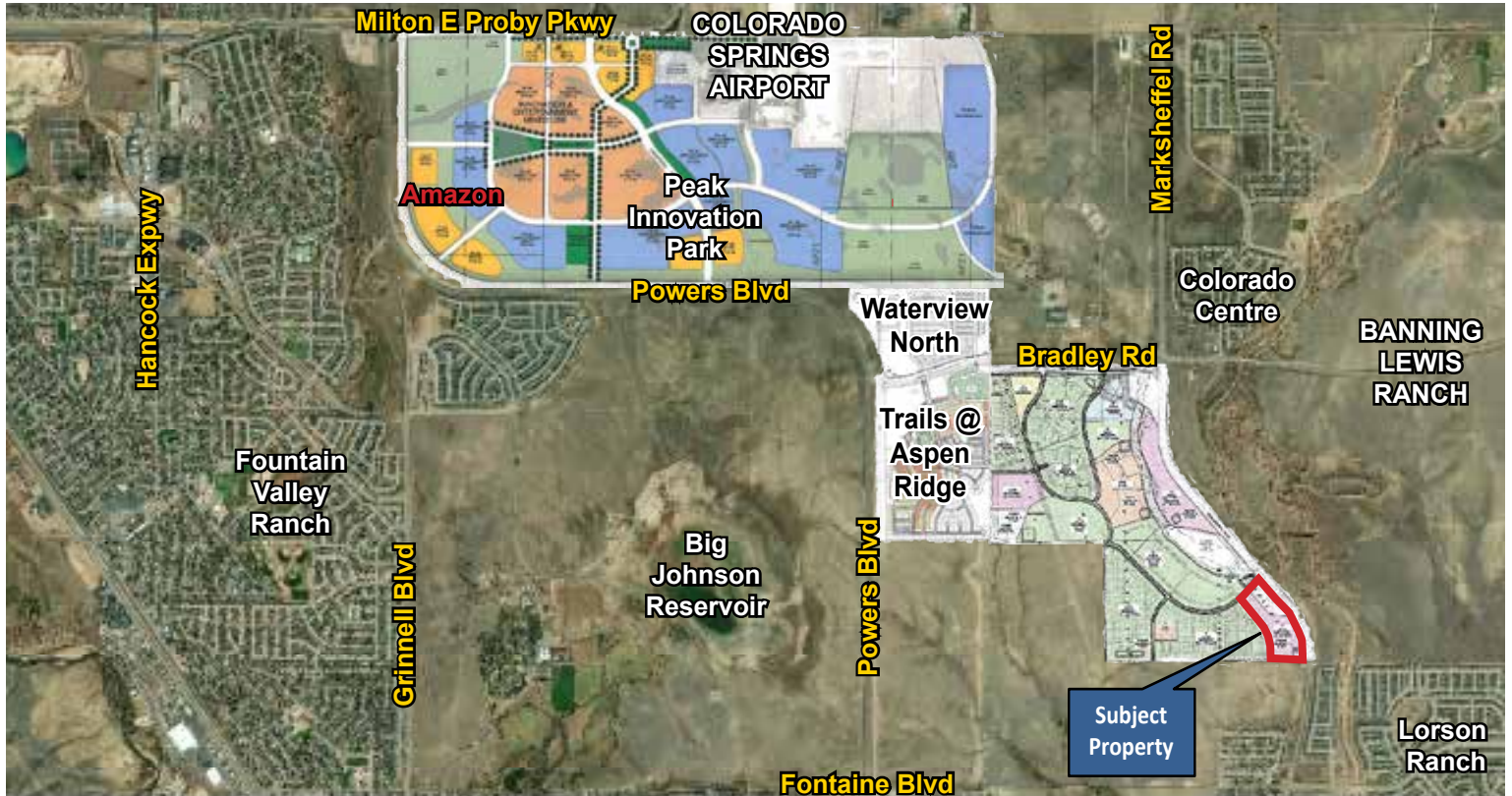


APPROX. 27 ACRES MULTIFAMILY FOR SALE

Bradley Road & Marksheffel Road, Colorado Springs, CO



BRADLEY RIDGE MULTIFAMILY



CITY OF COLORADO SPRINGS

PROPERTY INFORMATION

- Located in the City of Colorado Springs, just southeast of the new Amazon facilities and Peak Innovation Park south of the Colorado Springs Airport.
- Approximately 27 acres zoned for multifamily & high-density residential uses.
- The Bradley Heights Metropolitan District has completed the core infrastructure to the property with an option to buy-out of the District.
- High-visibility location, with an excellent marketing window off Marksheffel Road, less than 2 miles from shopping, restaurants, and services.
- Utilities provided by Colorado Springs Utilities.
- Widefield School District #3.
- Property can be purchased upon final approvals.

SALE PRICE: CALL BROKER

JACK MASON
Mason Land Solutions
719.332.2556
jack@masonlandsol.com

JAY O'SULLIVAN
JRO Land Company
719.362.6795
jay@jrolandco.com



02/18/26

17 S Wahsatch Avenue
Colorado Springs, CO 80903
www.masonlandsol.com
www.jrolandco.com

APPROX. 27 ACRES MULTIFAMILY FOR SALE

Bradley Road & Marksheffel Road, Colorado Springs, CO

AI-GENERATED DEVELOPMENT VISION

