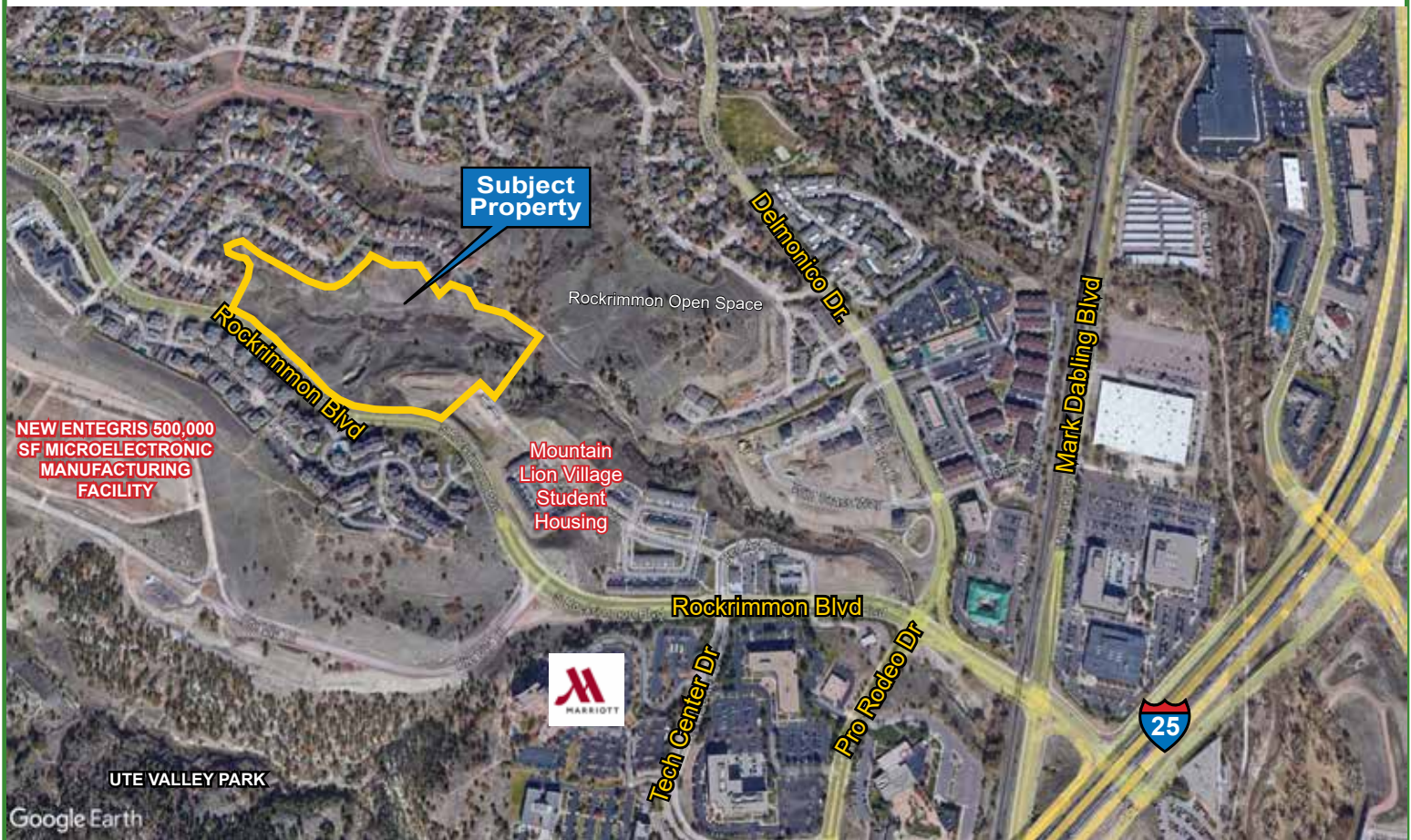


# FINISHED RESIDENTIAL LOTS FOR SALE

252 Heavy Stone View, Colorado Springs, CO 80919



## CREEKSIDE AT ROCKRIMMON - 43 SINGLE FAMILY LOTS



**ROCKRIMMON COMMUNITY • SCHOOL DISTRICT 20 • NEAR PARKS AND OPEN SPACES**

### PROPERTY INFORMATION

- Forty-three (43) permit-ready single family residential lots with minimum dimensions of 60' x 120'.
- Highly desired west side location with easy access to Interstate 25, University Village Center and Garden of the Gods corridor.
- Minutes from Garden of the Gods Park, large employment centers, shopping, restaurants and services.
- Utility services provided by Colorado Springs Utilities.
- Great mountain views, contiguous to open space and established city trails.
- High visibility location with an excellent marketing window.

**PRICE: BULK SALE PRICE REDUCTION OF \$155,000/LOT**

JACK MASON  
Mason Land Solutions  
719.332.2556  
jack@masonlandsol.com

JAY O'SULLIVAN  
JRO Land Company  
719.362.6795  
jay@jrolandco.com



3/17/25

17 S Wahsatch Avenue  
Colorado Springs, CO 80903  
www.masonlandsol.com

The information contained herein was obtained from sources believed to be reliable, however, Mason Land Solutions makes no guarantees, warranties, or representations as to the completeness or accuracy thereof. The presentation of this property is submitted subject to errors, changes of price or conditions prior to sale or lease, or withdrawal without notice.

# FINISHED RESIDENTIAL LOTS FOR SALE

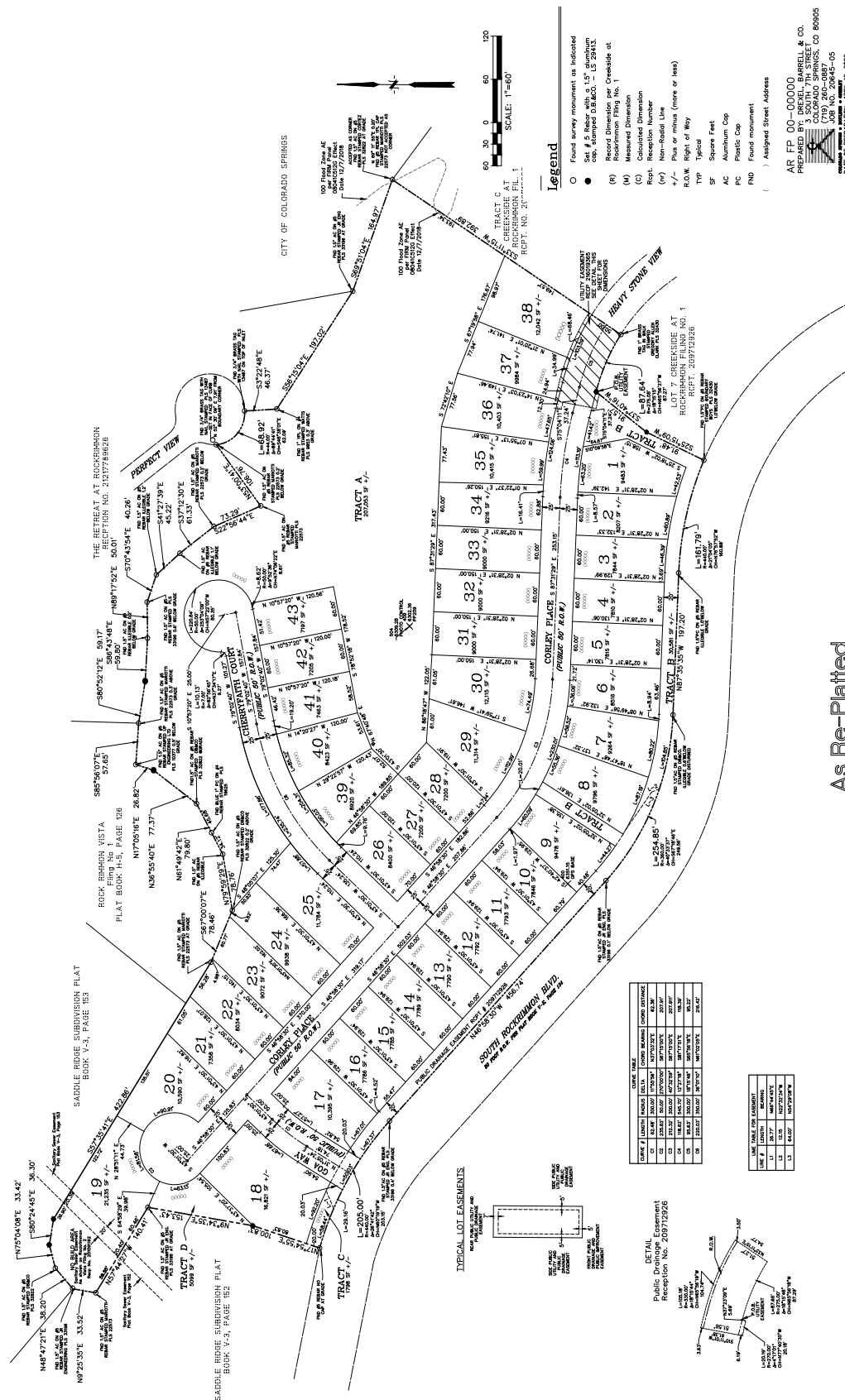
252 Heavy Stone View, Colorado Springs, CO 80919

## Approved Final Plat

### CREEKSIDE AT ROCKRIMMON SINGLE-FAMILY FILING NO. 1

A REPLAT OF LOT 9, CREEKSIDE AT ROCKRIMMON FILING NO. 1 BEING A PORTION OF THE EAST HALF OF SECTION 13, TOWNSHIP 13 SOUTH, RANGE 66 WEST OF THE SIXTH P.M., CITY OF COLORADO SPRINGS, COUNTY OF EL PASO, STATE OF COLORADO

TOTAL PLATTED AREA = 17.4692 ACRES ±



As Re-Platted

AR FP 00-00000  
PREPARED BY: MASON LAND SOLUTIONS & CO.  
COLORADO SPRINGS, CO 80905  
JOB NO. 20245-05  
DATE OF PREPARATION: APRIL 12, 2022



# FINISHED RESIDENTIAL LOTS FOR SALE

252 Heavy Stone View, Colorado Springs, CO 80919





252 Heavy Stone View, Colorado Springs, CO 80919





# FINISHED RESIDENTIAL LOTS FOR SALE

252 Heavy Stone View, Colorado Springs, CO 80919

## CREEKSIDE AT ROCKRIMMON

<u>Lot #</u>	<u>Address</u>	<u>Lot Type</u>	<u>Price</u>	<u>Lot Size SF</u>
1	229 Corley Place	Standard	\$ 195,000	9,443
2	243 Corley Place	Standard	\$ 190,000	8,202
3	257 Corley Place	Standard	\$ 190,000	7,835
4	271 Corley Place	Standard	\$ 180,000	7,801
5	285 Corley Place	Standard	\$ 180,000	7,815
6	299 Corley Place	Standard	\$ 185,000	8,512
7	313 Corley Place	Standard	\$ 185,000	9,258
8	327 Corley Place	Standard	\$ 190,000	9,792
9	341 Corley Place	Standard	\$ 190,000	9,684
10	355 Corley Place	Standard	\$ 180,000	7,848
11	369 Corley Place	Standard	\$ 180,000	7,793
12	383 Corley Place	Standard	\$ 180,000	7,794
13	397 Corley Place	Standard	\$ 180,000	7,796
14	411 Corley Place	Standard	\$ 180,000	7,796
15	425 Corley Place	Standard	\$ 180,000	7,796
16	439 Corley Place	Standard	\$ 180,000	7,796
17	453 Corley Place	Standard	\$ 190,000	10,408
18	467 Corley Place	Standard	\$ 192,500	16,935
19	480 Corley Place	Standard	\$ 190,000	19,912
20	466 Corley Place	Standard	\$ 185,000	11,948
21	452 Corley Place	Standard	\$ 180,000	7,347
22	438 Corley Place	Standard	\$ 185,000	8,023
23	424 Corley Place	Standard	\$ 185,000	9,065
24	410 Corley Place	Standard	\$ 185,000	9,930
25	396 Corley Place	Standard	\$ 187,500	11,781
26	382 Corley Place	Walkout	\$ 190,000	8,400
27	368 Corley Place	Walkout	\$ 190,000	7,200
28	354 Corley Place	Walkout	\$ 190,000	7,200
29	340 Corley Place	Walkout	\$ 200,000	11,314
30	326 Corley Place	Walkout	\$ 200,000	12,115
31	312 Corley Place	Walkout	\$ 195,000	9,000
32	298 Corley Place	Walkout	\$ 195,000	9,000
33	284 Corley Place	Walkout	\$ 195,000	9,000
34	270 Corley Place	Walkout	\$ 195,000	9,217
35	256 Corley Place	Walkout	\$ 200,000	10,456
36	242 Corley Place	Walkout	\$ 200,000	10,411
37	228 Corley Place	Walkout	\$ 200,000	9,970
38	214 Corley Place	Walkout	\$ 200,000	11,995
39	6019 Cherryfaith Court	Walkout	\$ 195,000	8,920
40	6035 Cherryfaith Court	Walkout	\$ 195,000	8,423
41	6051 Cherryfaith Court	Walkout	\$ 195,000	7,463
42	6067 Cherryfaith Court	Walkout	\$ 195,000	7,250
43	6083 Cherryfaith Court	Walkout	\$ 197,500	7,197