

FULLY APPROVED APARTMENT SITE FOR SALE

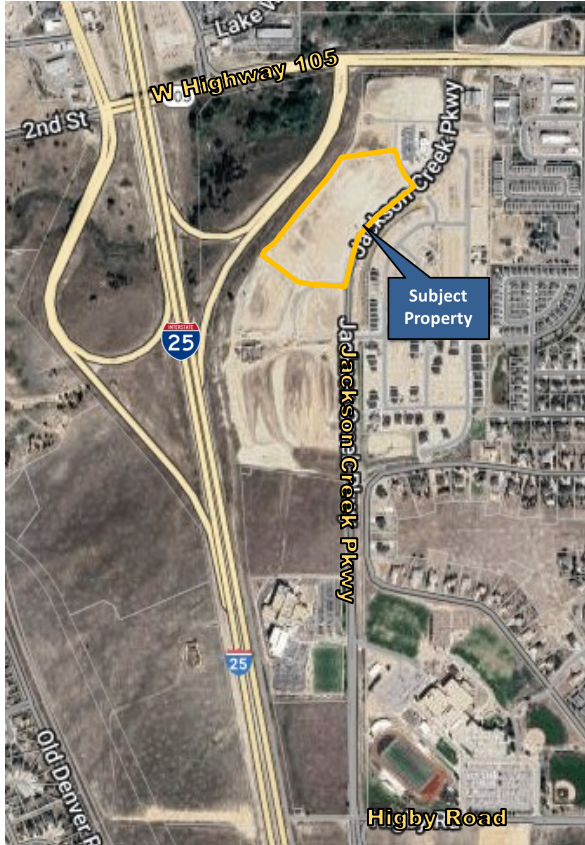
Hwy 105 and Jackson Creek Pkwy, Monument, CO 80132

MASON

LAND SOLUTIONS

Brokerage | Investment | Consulting

MONUMENT JUNCTION - MULTI-FAMILY FINISHED PAD SITE



PROPERTY INFORMATION

- 10.7 acre site fully approved and platted for 240 apartment units. Permit and shovel-ready.
- Town Of Monument/School District #38.
- Site is rough-graded with access roads and utilities stubbed to site and off-site detention/water-quality pond completed.
- Administrative approval only for new building plans, if new structures are within existing footprint.
- Services provided by Woodmoor Water and Sanitation (WWS). Water contribution to WWS provided by Seller.

SALE PRICE: \$8,000,000.00

JACK MASON
Mason Land Solutions
719.332.2556
jack@masonlandsol.com

JAY O'SULLIVAN
JRO Land Company
719.362.6795
jay@jrolandco.com


JRO LAND CO.
BROKERAGE | CONSULTING

04/01/25
17 S Wahsatch Avenue
Colorado Springs, CO 80903
www.masonlandsol.com
www.jrolandco.com

The information contained herein was obtained from sources believed to be reliable, however, Mason Land Solutions, LLC makes no guarantees, warranties, or representations as to the completeness or accuracy thereof. The presentation of this property is submitted subject to errors, changes of price or conditions prior to sale or lease, or withdrawal without notice.

FULLY APPROVED APARTMENT SITE FOR SALE

Hwy 105 and Jackson Creek Pkwy, Monument, CO 80132

