

MULTIFAMILY PAD SITE FOR SALE

Marksheffel Rd & Space Village Ave, Colorado Springs, CO 80915

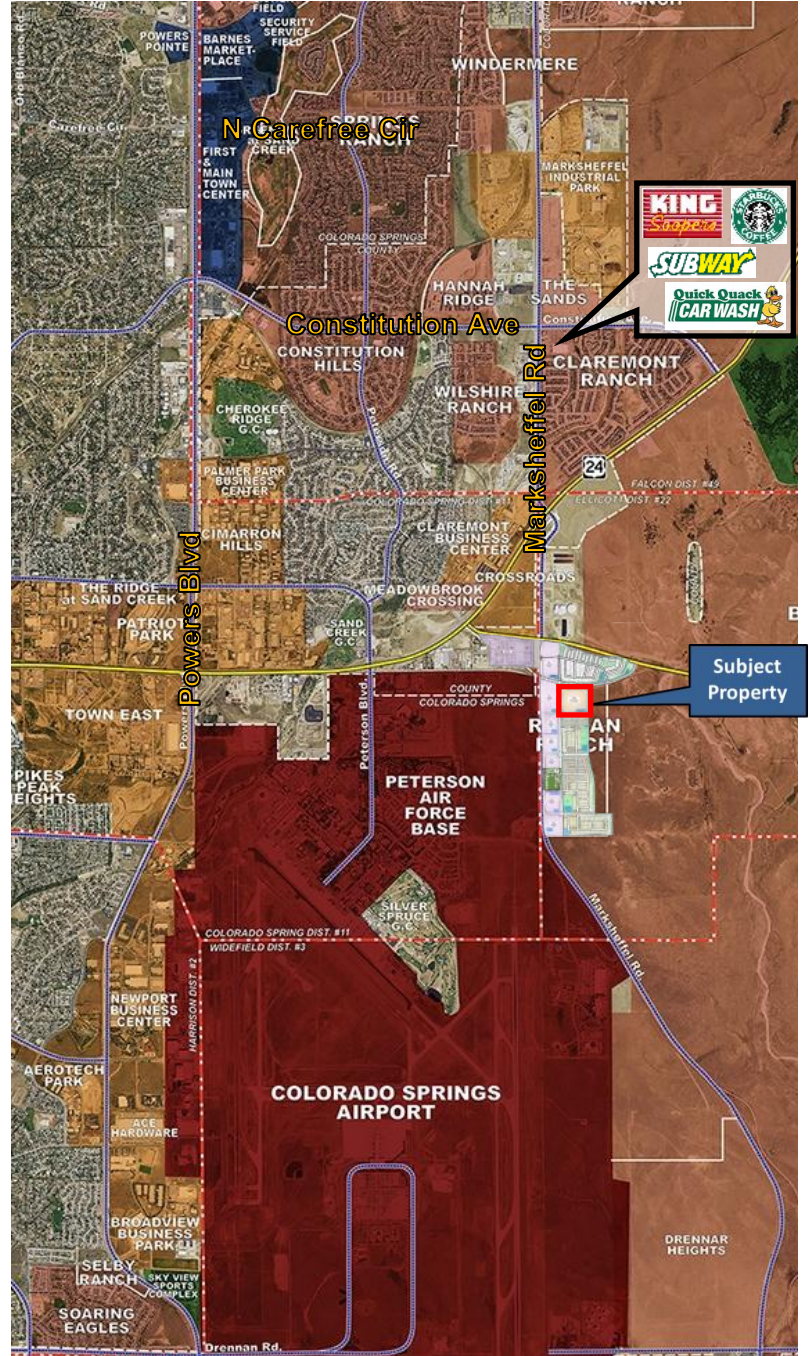


15.40 ACRES IN REAGAN RANCH MASTER PLANNED COMMUNITY

PROPERTY INFORMATION

- Located along the quickly expanding Marksheffel Road corridor at SEC of Space Village Avenue and Marksheffel Road immediately south of Hwy 24.
- Approximately 15.40 acres within the City of Colorado Springs with approved zoning for 378 units.
- The Reagan Ranch Master Planned Community includes single family neighborhoods, community center, parks, commercial/retail and industrial.
- Easy access to Powers Corridor shopping, restaurants, entertainment and services.
- All services provided by Colorado Springs Utilities.
- Reagan Ranch Metropolitan District to construct all public roads, detention facilities and deliver site rough graded with utilities stubbed to site. Improvements are under construction.
- Property included in Reagan Ranch Metropolitan District. District to provide primary public infrastructure.
- School District #22 Ellicott.
- Final Plat approval is projected by 2nd Quarter 2025.
- Property will require on-site water quality and detention facilities.

**PURCHASE PRICE:
CALL BROKER**



JACK MASON
Mason Land Solutions
719.332.2556
jack@masonlandsol.com

JAY O'SULLIVAN
JRO Land Company
719.362.6795
jay@jrolandco.com



6/16/25
17 S Wahsatch Avenue
Colorado Springs, CO 80903
www.masonlandsol.com
www.jrolandco.com

