

POINT PIPER WATERFRONT

COBBOLD & CO





PROPERTY FEATURES

5 

7 

10+ 























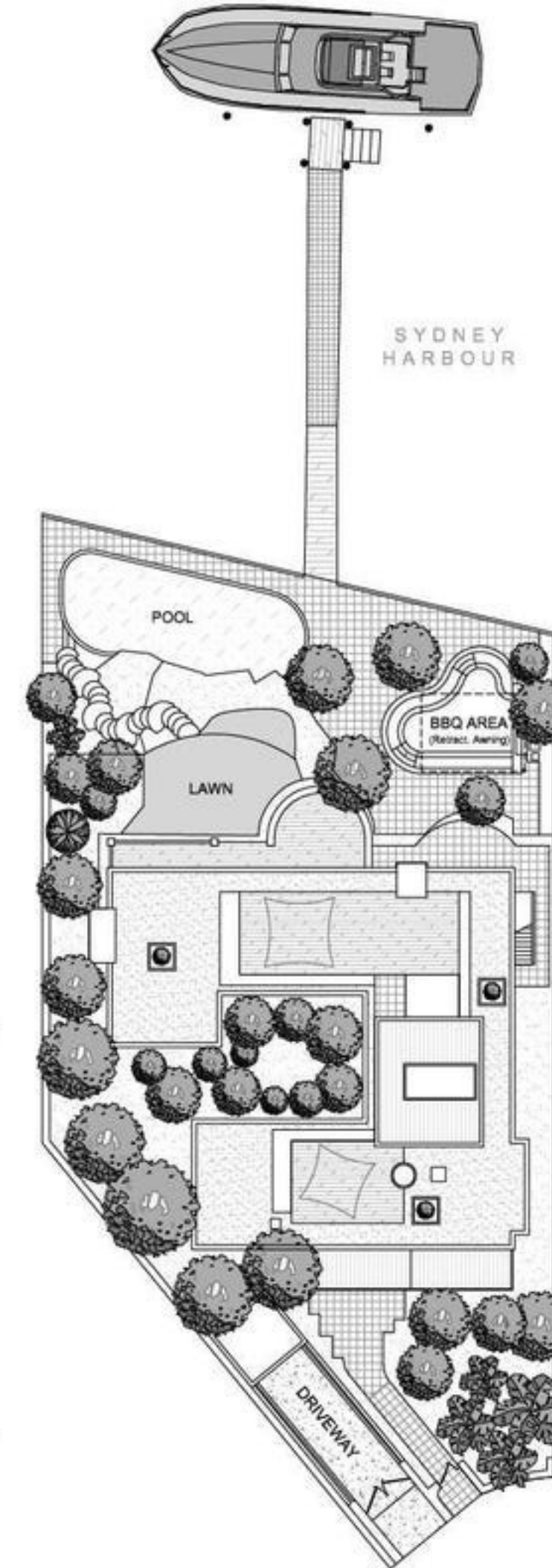
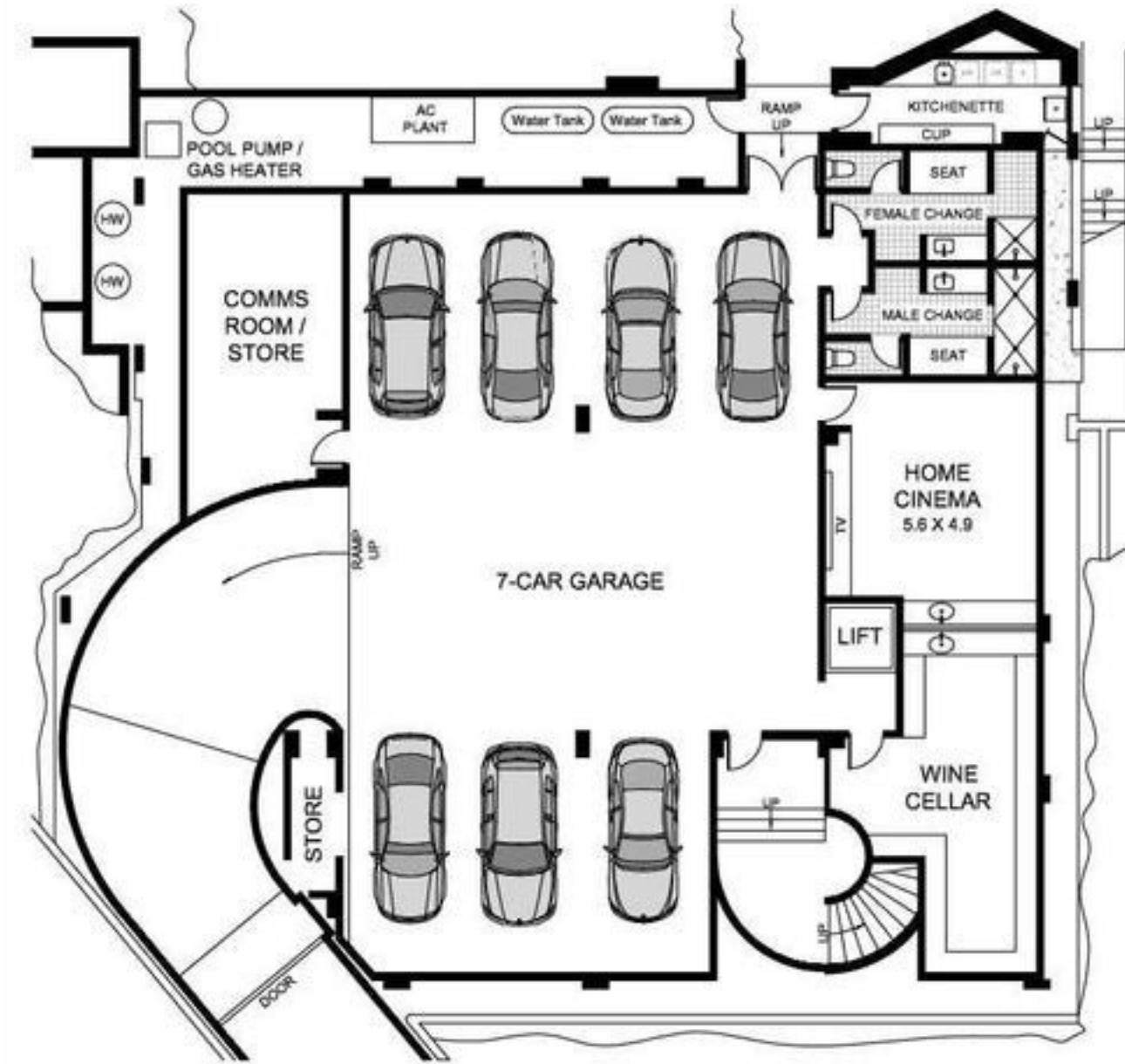
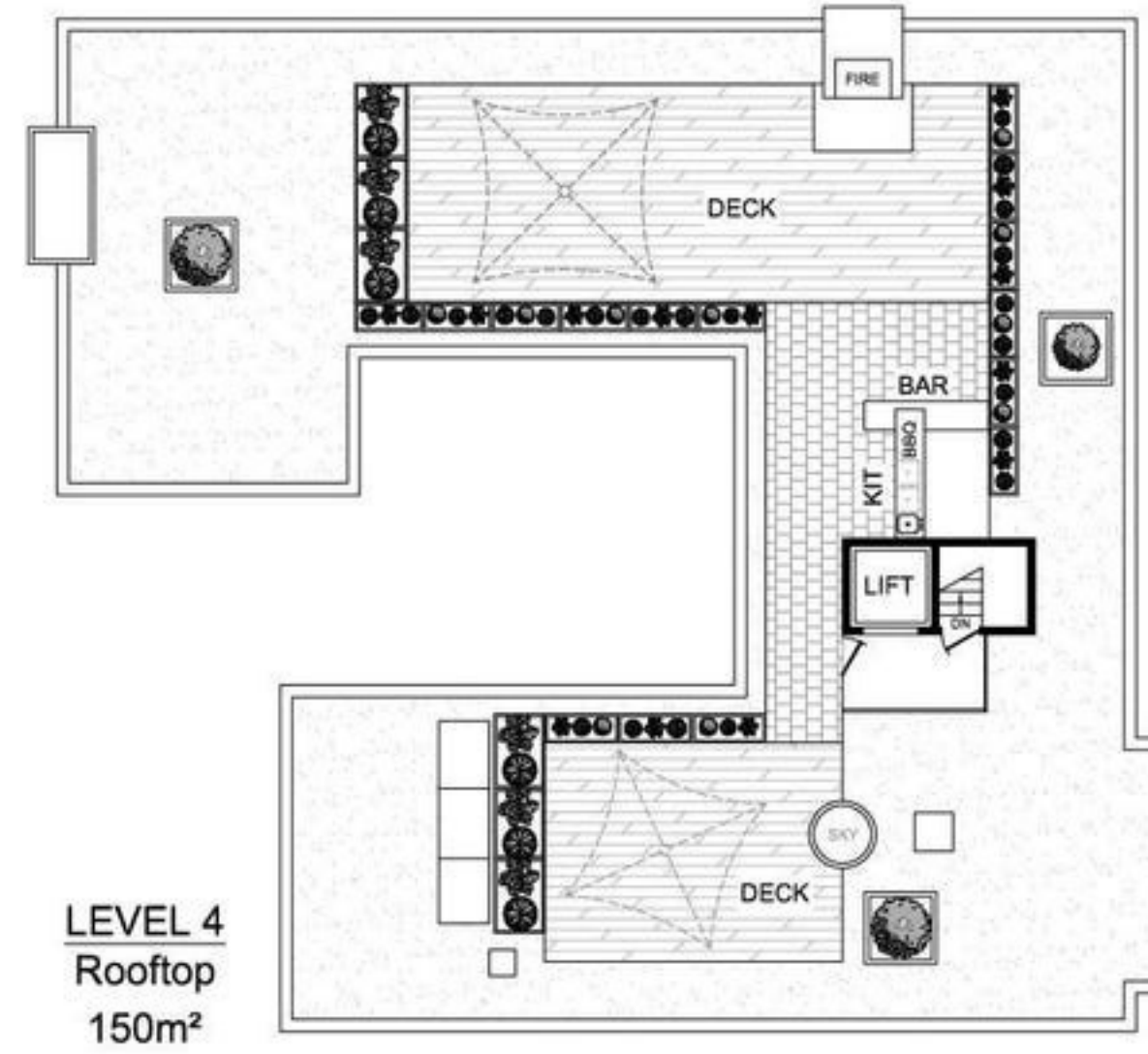




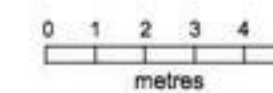
This plan is for illustrative purposes only and dimensions are approximate. It does not constitute part of any legal document or commercial contract for the sale or lease of this property.



0 1 2 3 4 5
metres



SITE PLAN
(at reduced scale)
Land Size - 1380m²



This plan is for illustrative purposes only and dimensions are approximate. It does not constitute part of any legal document or commercial contract for the sale or lease of this property.