

A fashion show set with models and a camera operator. A woman in a grey dress is the central focus, looking down. To her left, a woman in a white top is being filmed by a camera operator. In the background, a sign lists characteristics: BLADERUNNER (THE WORD), STRONG EYES, FAST, PUNK, UNAPPROACHABLE. A woman in a white jacket is on the right. A speaker icon is in the bottom right corner.

# The Devil Wears Prada

Presented by  
Karrington Bradley

# About The Movie

- Title
  - The Devil Wears Prada
- Producer
  - Wendy Finerman
- Director
  - David Frankel
- Screenplay Writers
  - Lauren Weisberger · Aline Brosh McKenna
- Lead Actors
  - Meryl Streep, Anne Hathaway, Stanley Tucci, Emily Blunt
- Production Date
  - 2006
- Awards
  - Golden Globe, Quill Award, BMI Film & TV Award



# Summary

Andrea Sachs is a recent grad looking to be hired by the most prestigious magazine in NY

## Intro

Andy gets the job.

## First Day

Andy is made fun of because of her clothes and her size

## Critiques

Andy gets help from Nigel

## Mentor

Her new success at work effects her outside relationships

## Personal Life

Andy learns more about her boss' life

## Miranda

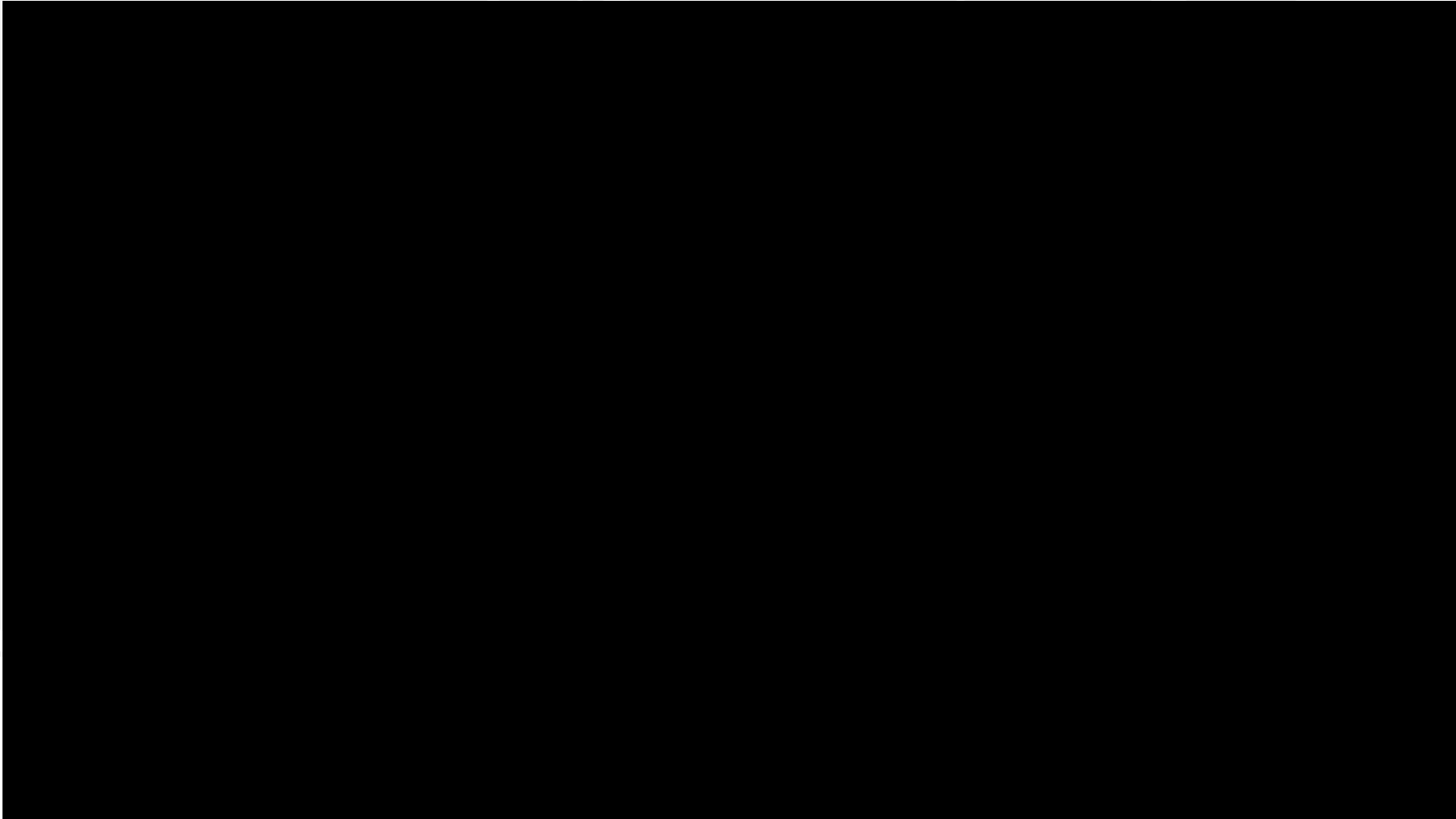
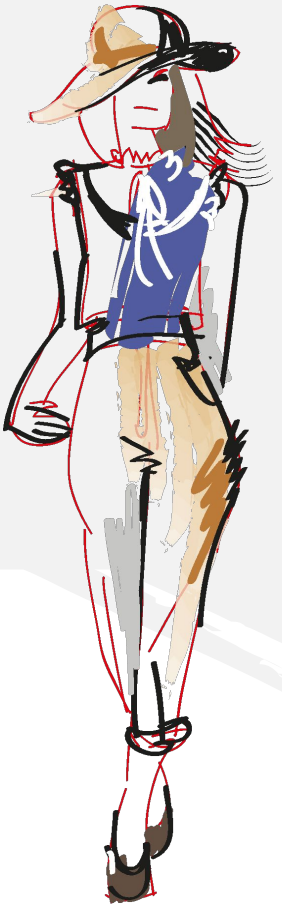
Andy sees how much the job has changed her and quits

## Last Day

Miranda writes Andy a great review

## Outro

# Meeting Miranda

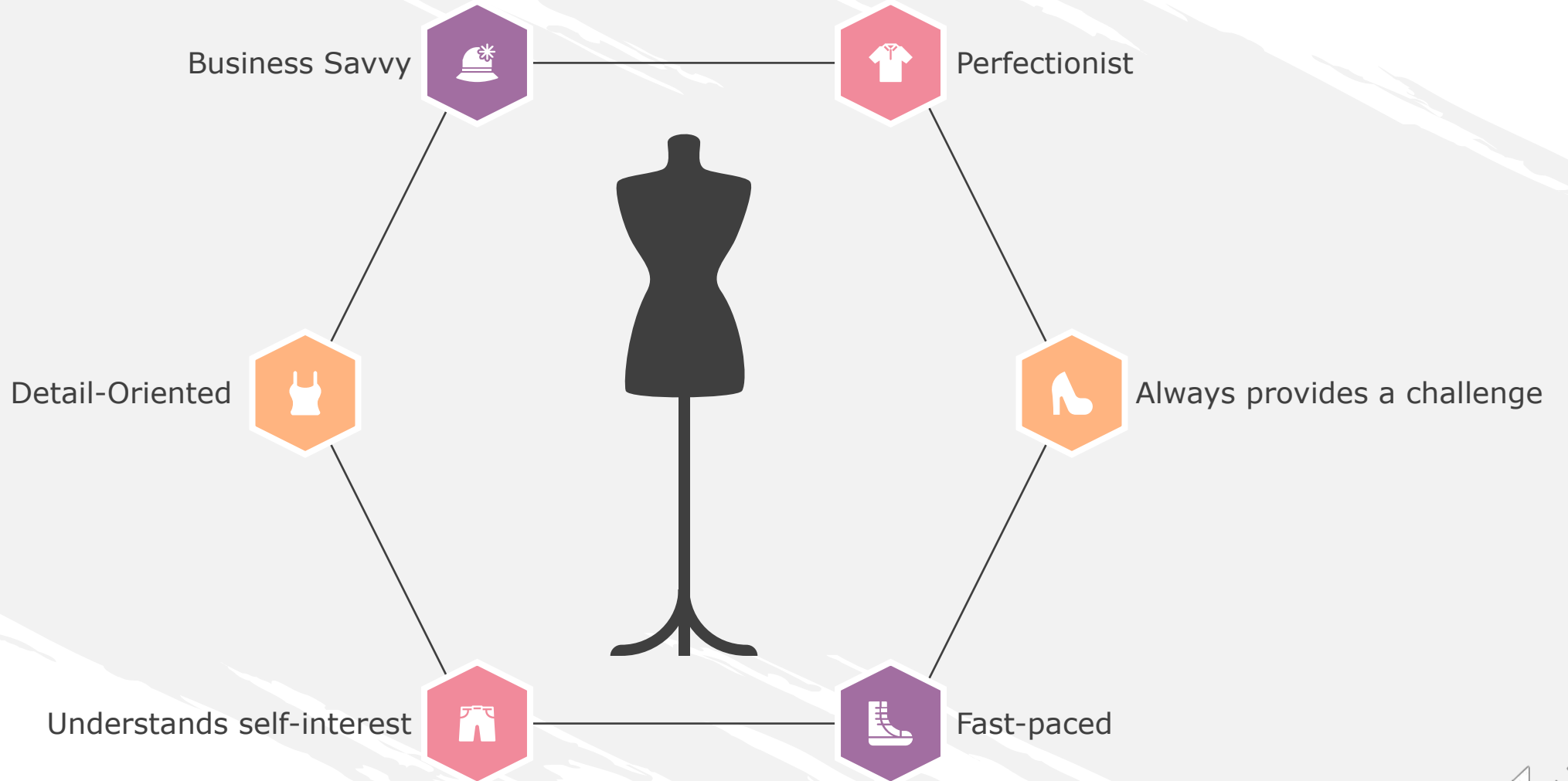


Watch video before listening to commentary

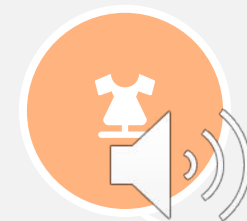
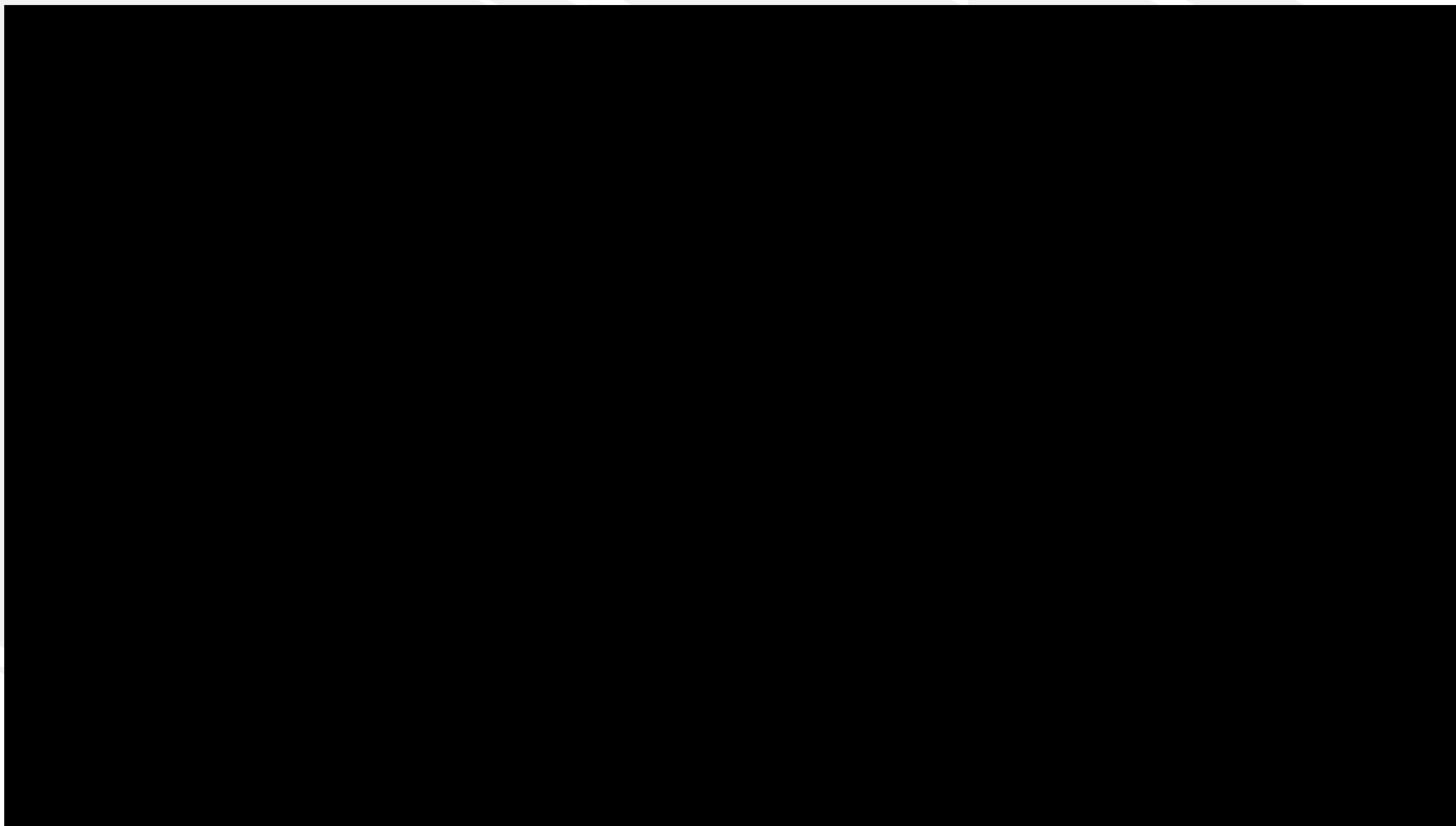




# Miranda



# It's Lonely On Top



Watch video before listening to commentary

# Industry Rules

## Stay Relevant



Make sure that you keep yourself popular by following trends and keeping up with the public's main interests.

## Alliances/Connections



Form connections with as many powerful people as you can, they may help you in the future.

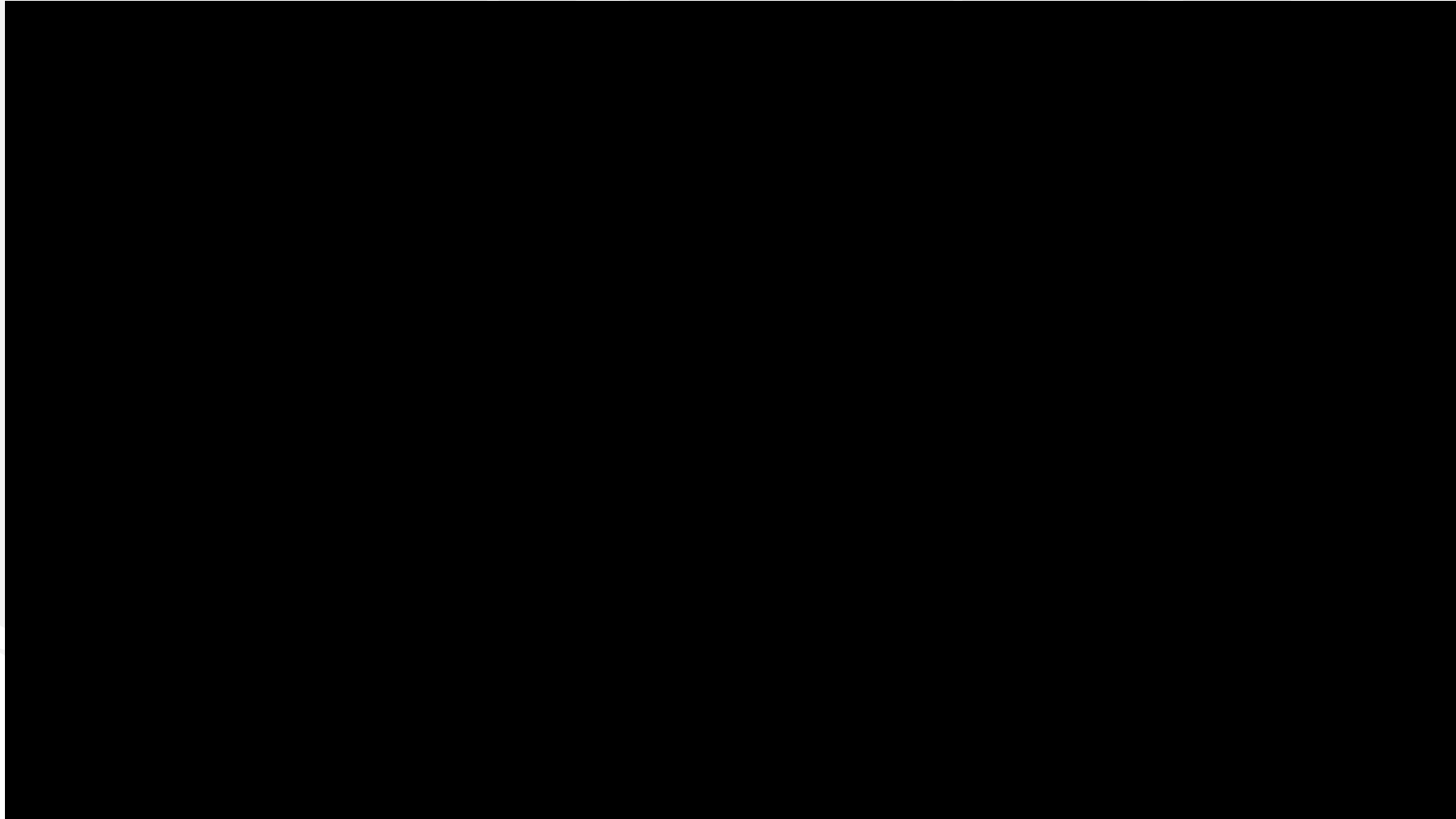
## Be One Step Ahead



Stay in the know. Always be aware of what's going on and what is about to happen whether it be events, scandals, or new trends.



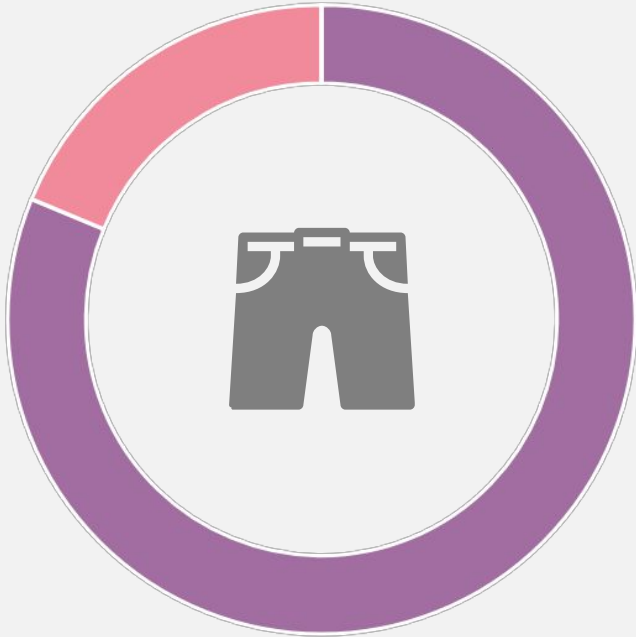
# Everybody Wants To Be Us



Watch video before listening to commentary

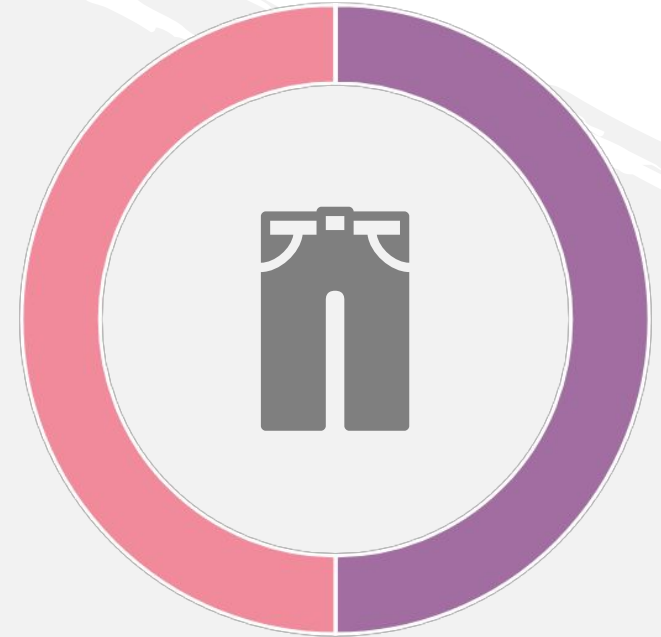


# Ethical Critique



## Miranda Priestly

The portrayal of everything wrong with upper management



## Andrea Sachs

A naïve interpretation of “fresh meat” or new graduates

COMPARE



A group of people in white lab coats are gathered in a laboratory or medical setting. In the foreground, a hand holds a camera, partially obscuring the view. The background shows a wall with a sign that lists terms: "BLADDERNER (THE WORD)", "WRING EYES", "FAST", "PUNK", and "UNAPPROACHABLE".

**THANK YOU**



# Bibliography

- "The Devil Wears Prada." *IMDb*, IMDb.com, 29 June 2006, [www.imdb.com/title/tt0458352/](http://www.imdb.com/title/tt0458352/).
- Finerman, Wendy, and Aline Brosh McKenna. *The Devil Wears Prada*. 20th Century Fox, 2006.