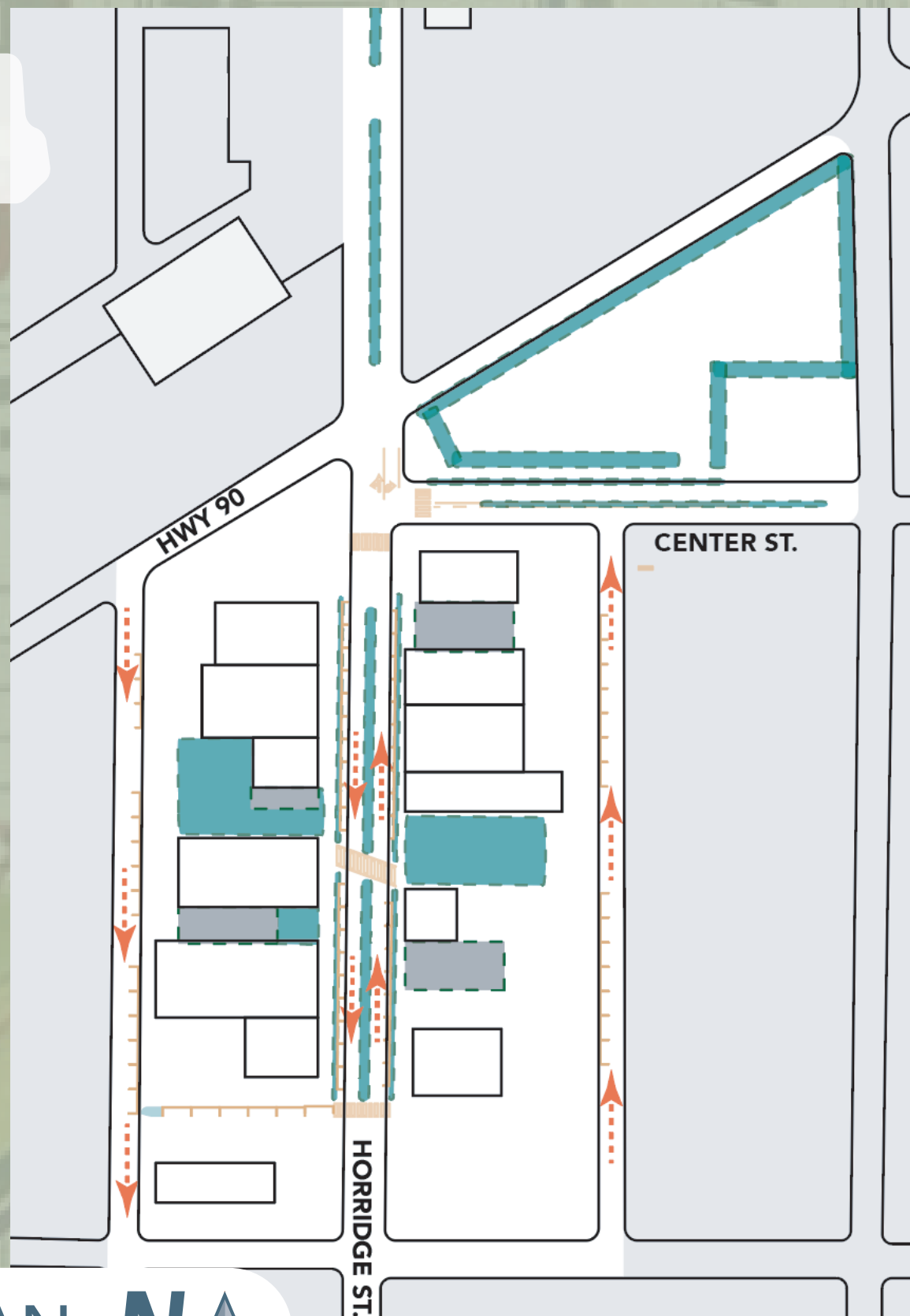
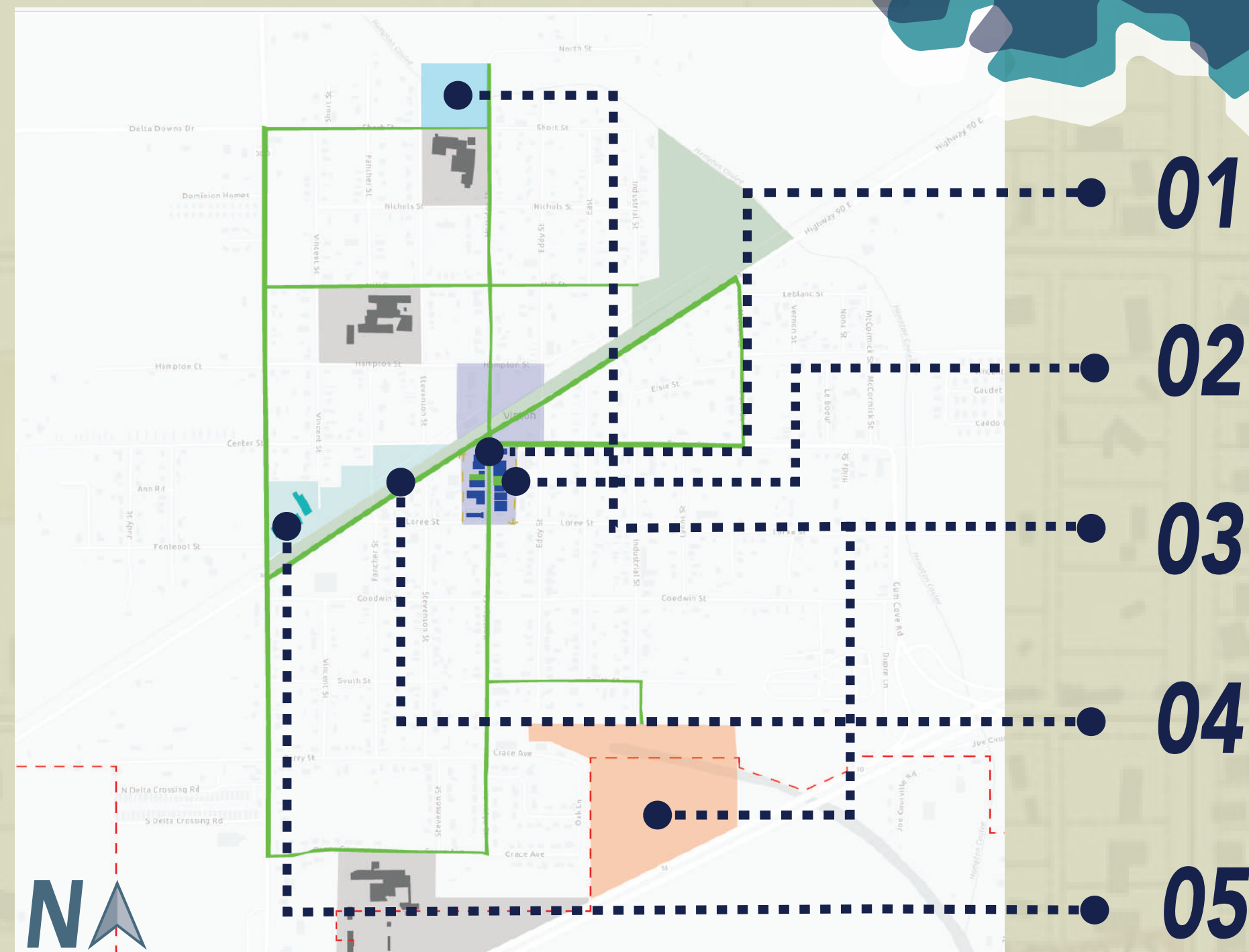


# NEW BEGINNINGS

VINTON, LOUISIANA

New Beginnings starts at the center of downtown; Opportunity waits just around the corner of Center St. and Breaux's Pharmacy; Introducing Horridge Boulevard, a collaborative redesign of the towns Main Street through a series of interactive spaces along with social hubs to not only invite pedestrians through the town but to explore it.

By having connected pathways and green elements that reflect the same welcoming atmosphere the community brings, the townsfolk are able to rediscover their home in new light.



SITE PLAN

## ASSETS

TIGHT KNOT COMMUNITY

AMENITY PROXIMITY

EXISTING INFRASTRUCTURE

## CHALLENGES



SOCIAL HUBS



AMENITY OPTIONS



CIRCULATION

## FOCUSES

RECREATION

LEISURE

ENTERTAINMENT

Working to create **INTERACTIVE** spaces by connecting **COMMUNITY**



PERSPECTIVE DOWN CENTER ST.



PERSEPECTIVE DOWN HORRIDGE BLVD.

## 01 HORRIDGE BOULEVARD

## 02 POCKET PARKS

RENDER POP-UP MOVIE CENTER



RENDER POCKET PARK HUB

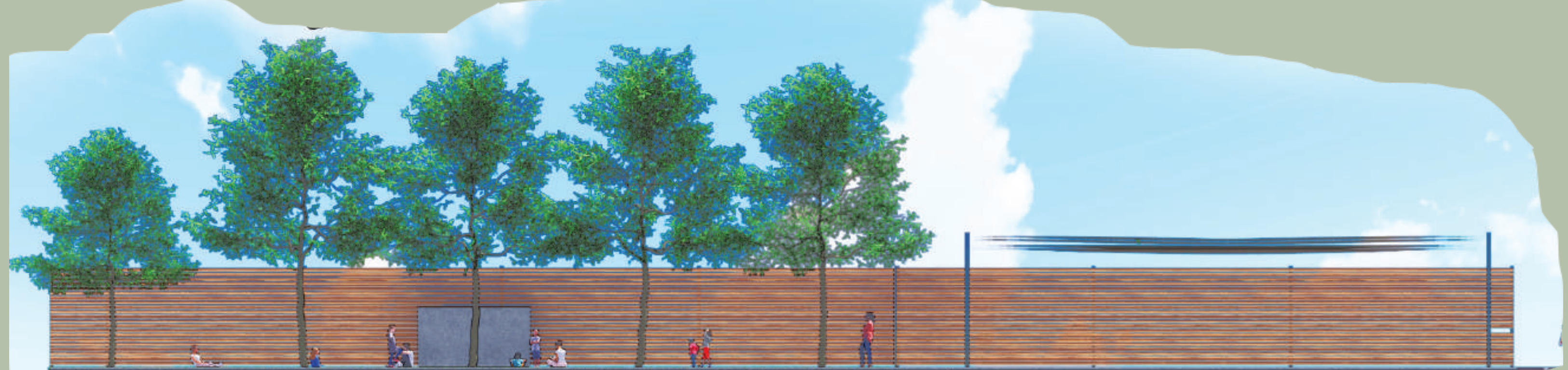


SITE PLAN

Pocket Parks socially activate downtown. This is done by providing amenities which attract and encourage people to linger and socialize in. Seating, shade, areas for various activities and proximity to food and stores downtown provide access to various forms of leisure and entertainment.



THE CONNECTING PIECE

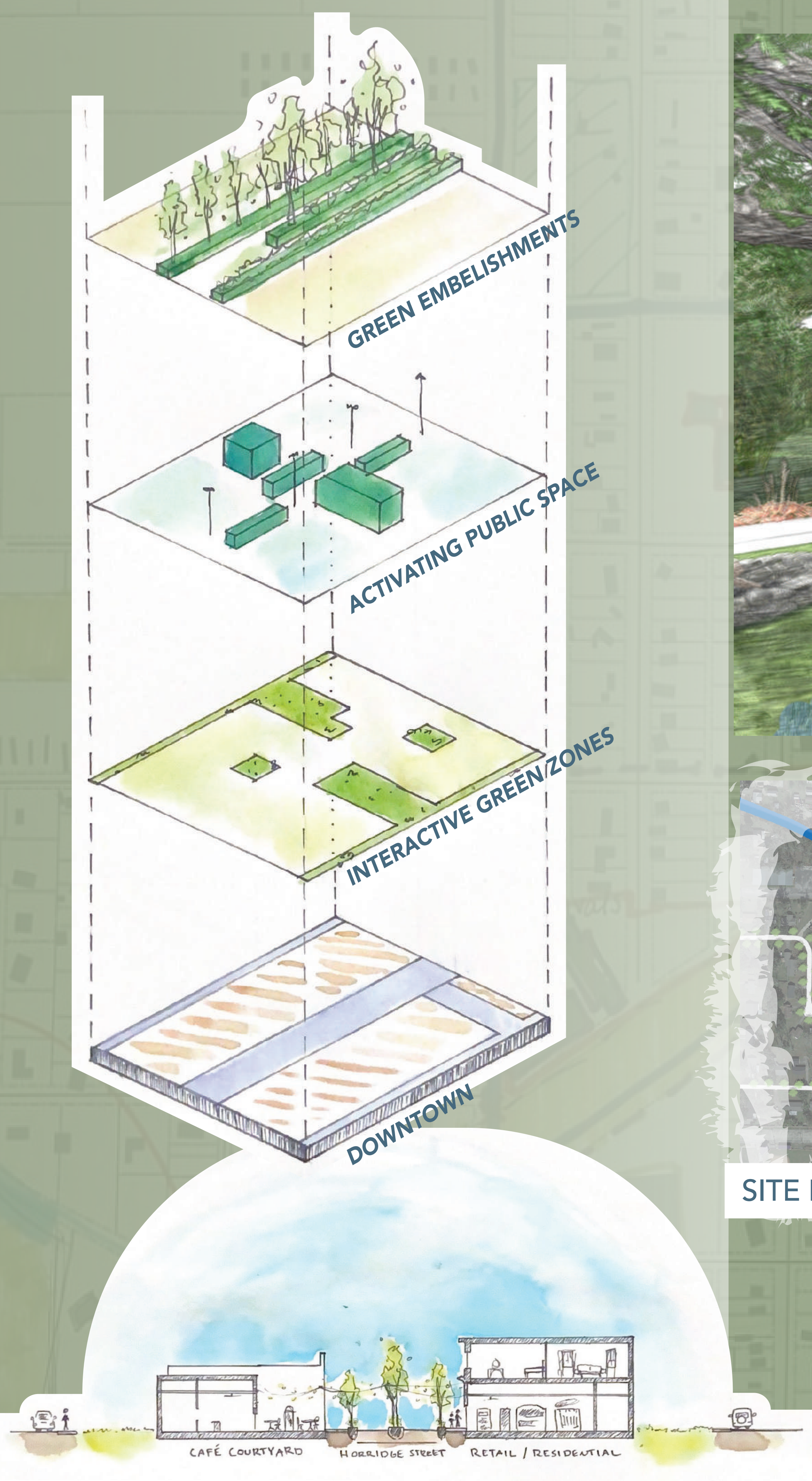


SECTION: POP-UP MOVIE CENTER



SECTION: POCKET PARK HUB





SECTION HORRIDGE BLVD.



RENDERING CAJUN COTTAGE



SITE PLAN NA



RENDERING WARD 7 PEDESTRIAN BRIDGE

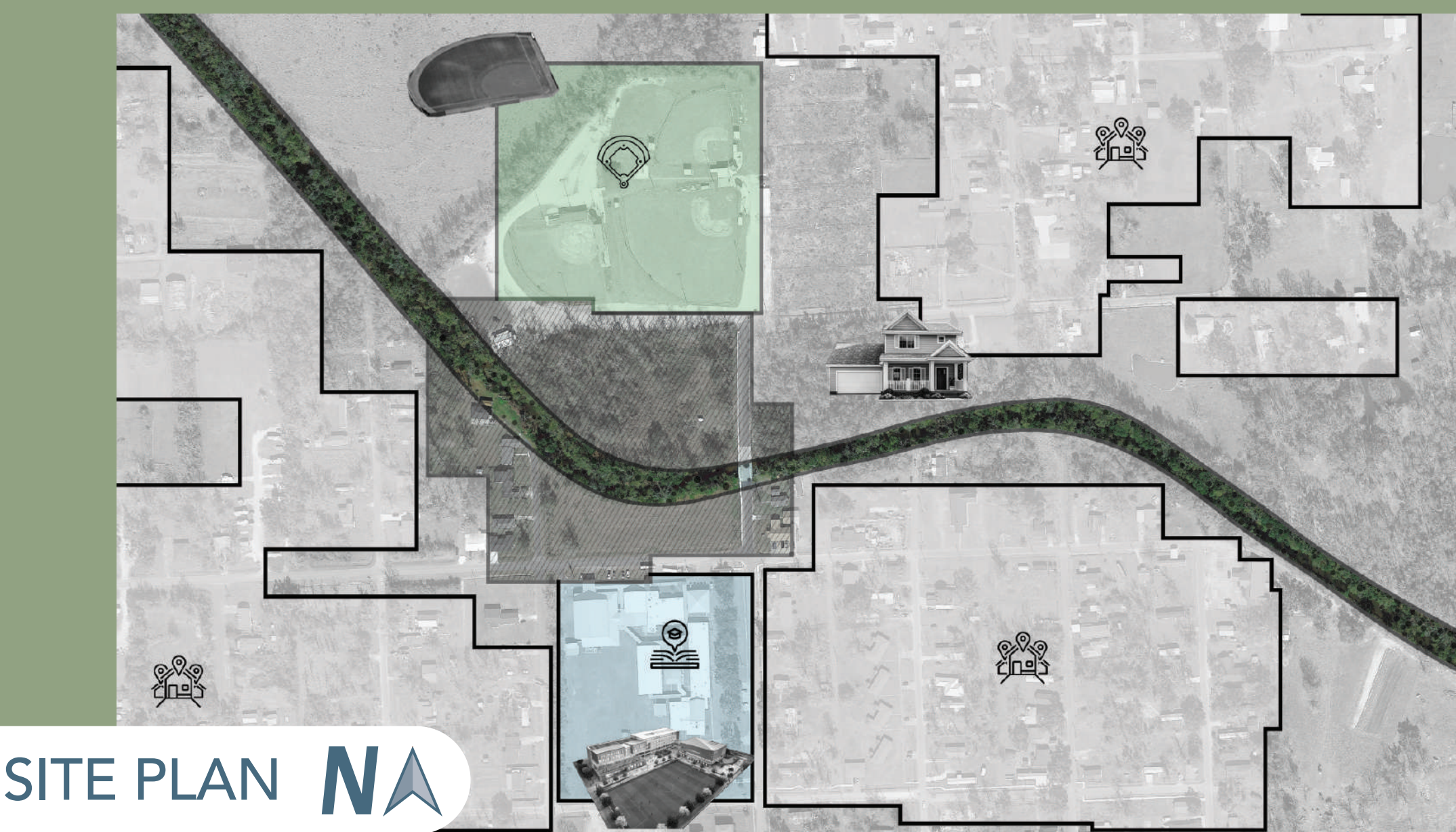


SECTION COULEE BRIDGE

As Vinton grows, its housing and recreational space will need to grow as well. Here is a proposed suite of mini houses to offer the community as it grows, along with a park with multiple recreational amenities to serve the community.

## 03 HOUSING ON THE WATERFRONT

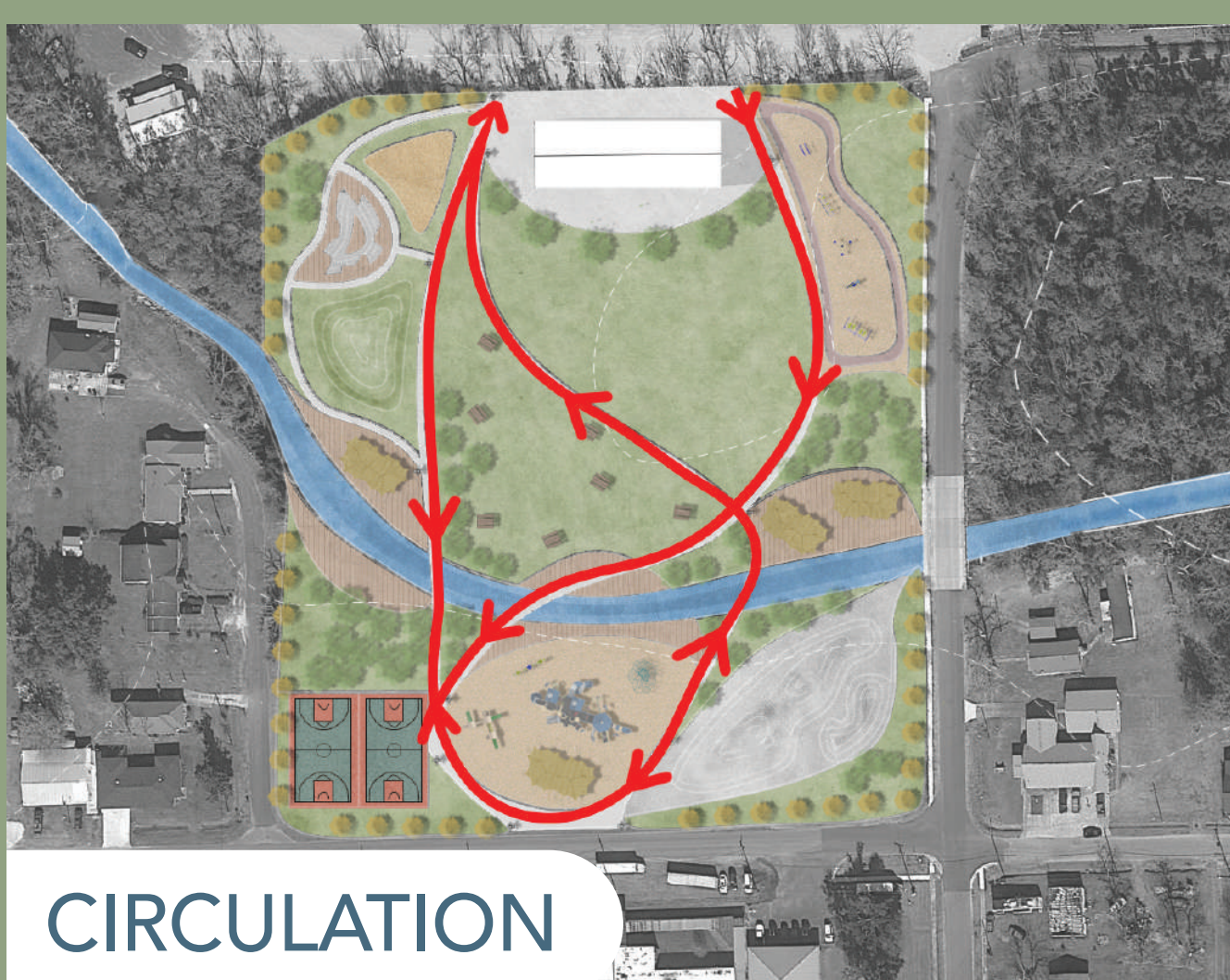
The core planning for this site revolves around redesigning it to serve as a recreational destination for people's leisure time, aiming to bring joy to those who visit the park. Initially, I divided the site into multiple zones using a grid and interconnected them with roads. Given the proximity of the site's southern side to a high school, I tailored the design of the southern area to better suit teenagers.



SITE PLAN NA



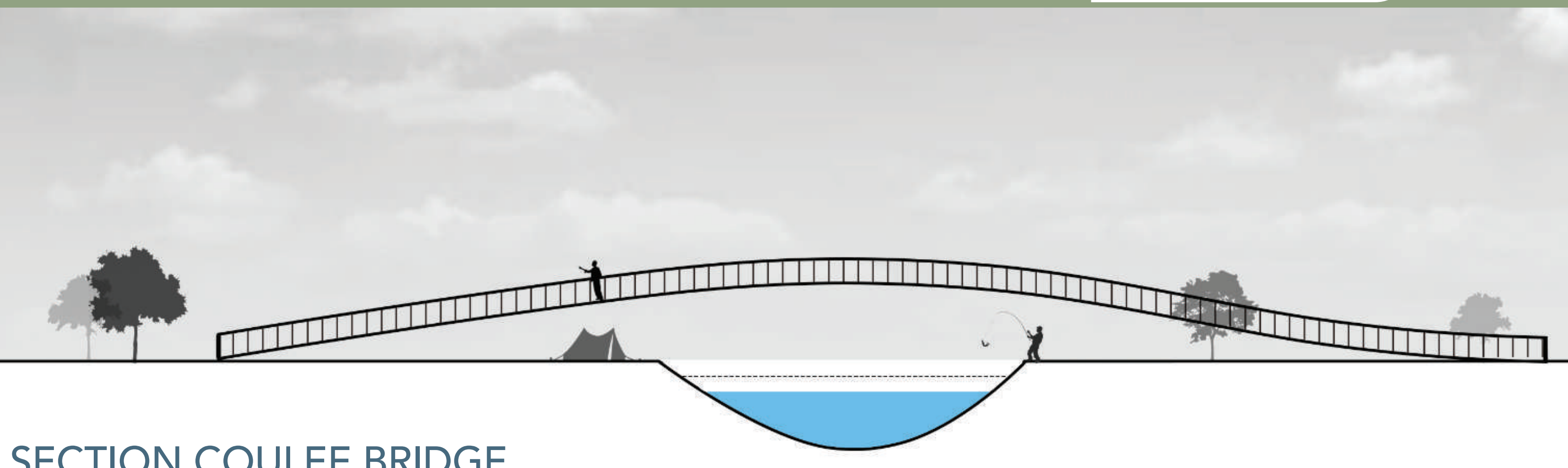
MASTERPLAN



CIRCULATION



DRAINAGE



SECTION COULEE BRIDGE



SECTION RECREATION CENTER



RENDERING - DOG PARK



SECTION OF RXR AND HWY 90 BRIDGE



CYPRESS PARK & TRAIL SITE PLAN



PERSPECTIVE WALK

The Cypress Trails is a proposed node focusing on the areas between highway 90 and the railroad in the center of Vinton. If integrated into the community, the greenway can serve as a beautiful solution in better connecting the community, while providing new opportunities to experience the landscape and foster community.



RENDER CYPRESS PARK

CYPRESS TRAIL PLAN



## 05 HARVEST HIDEAWAY

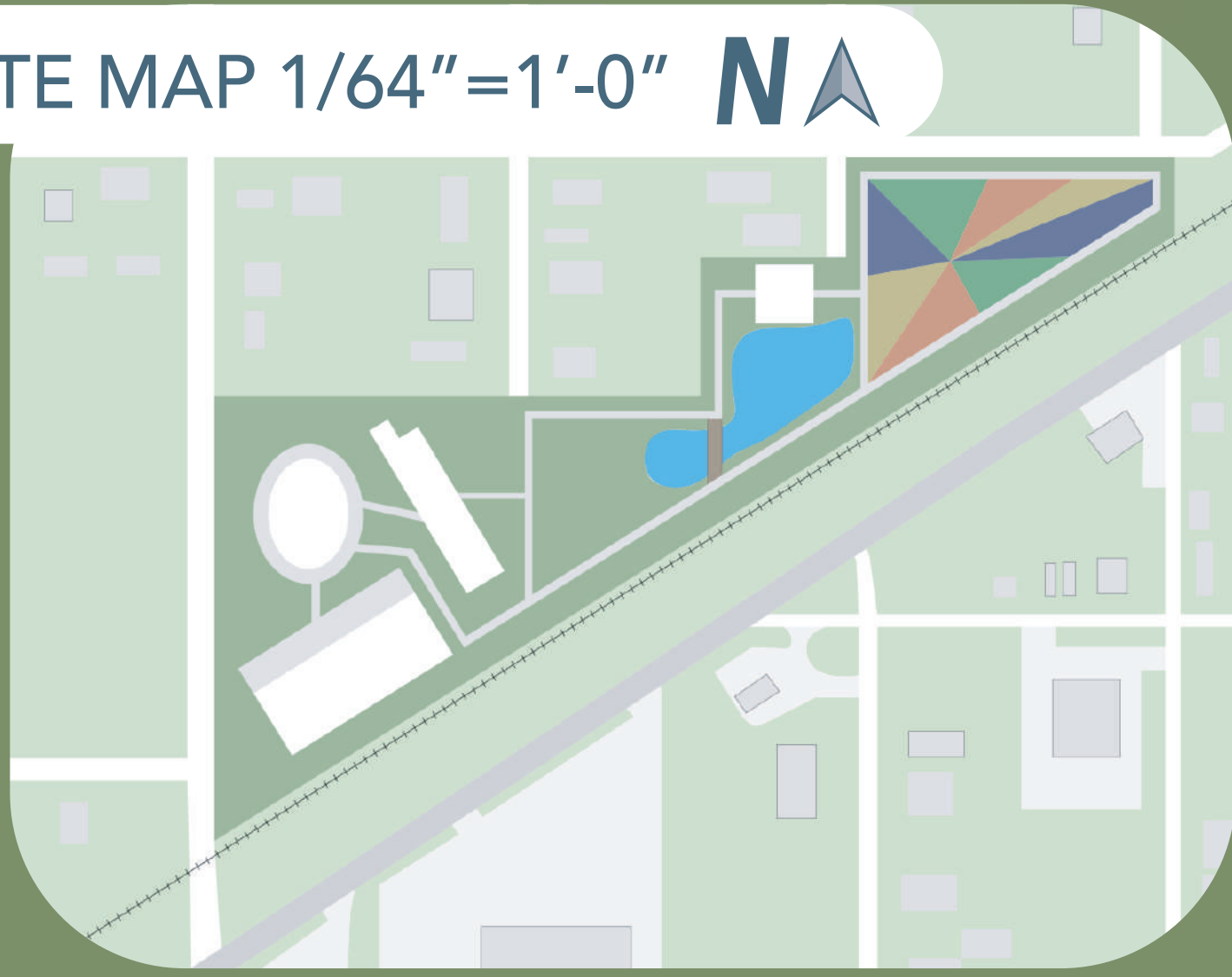
## 04 CYPRESS TRAILS



RENDER HARVEST HIDEAWAY

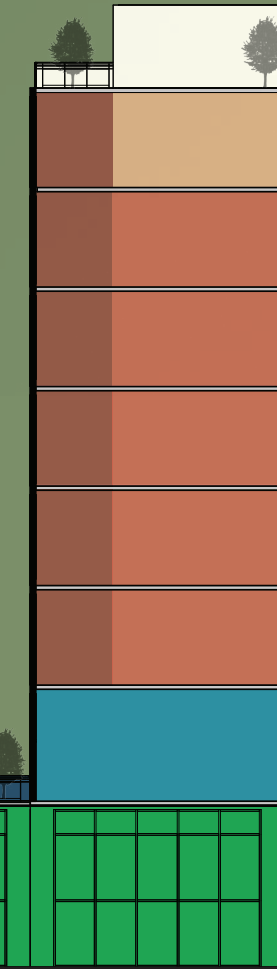
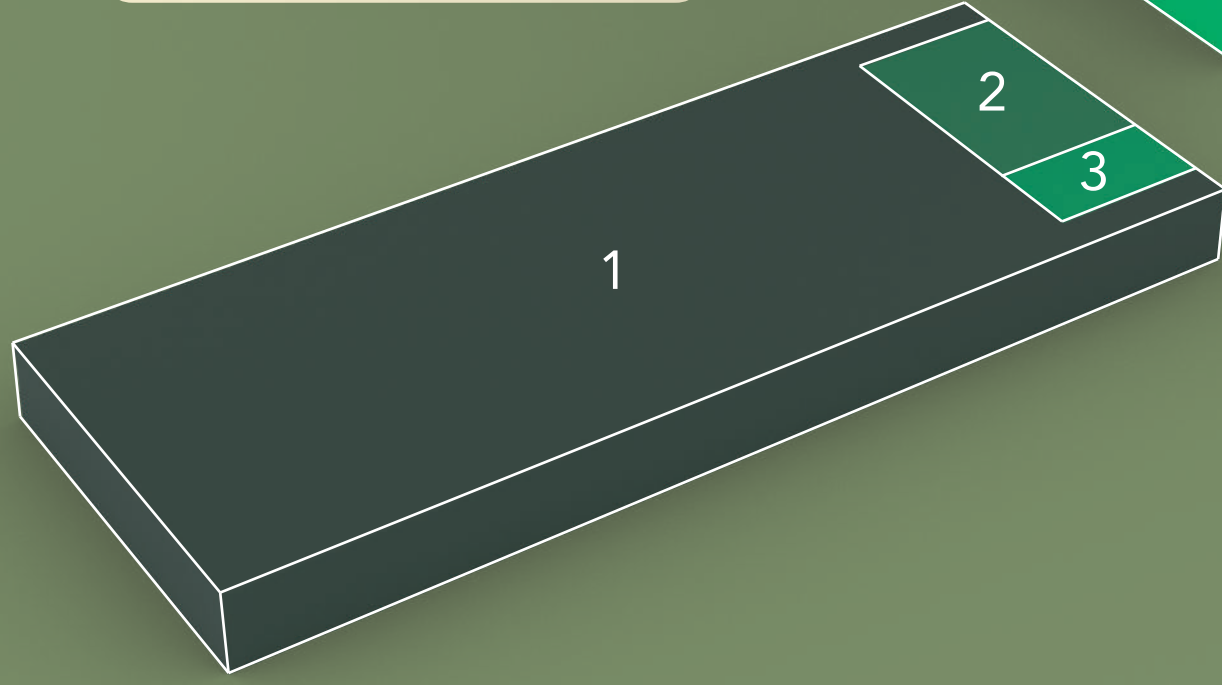
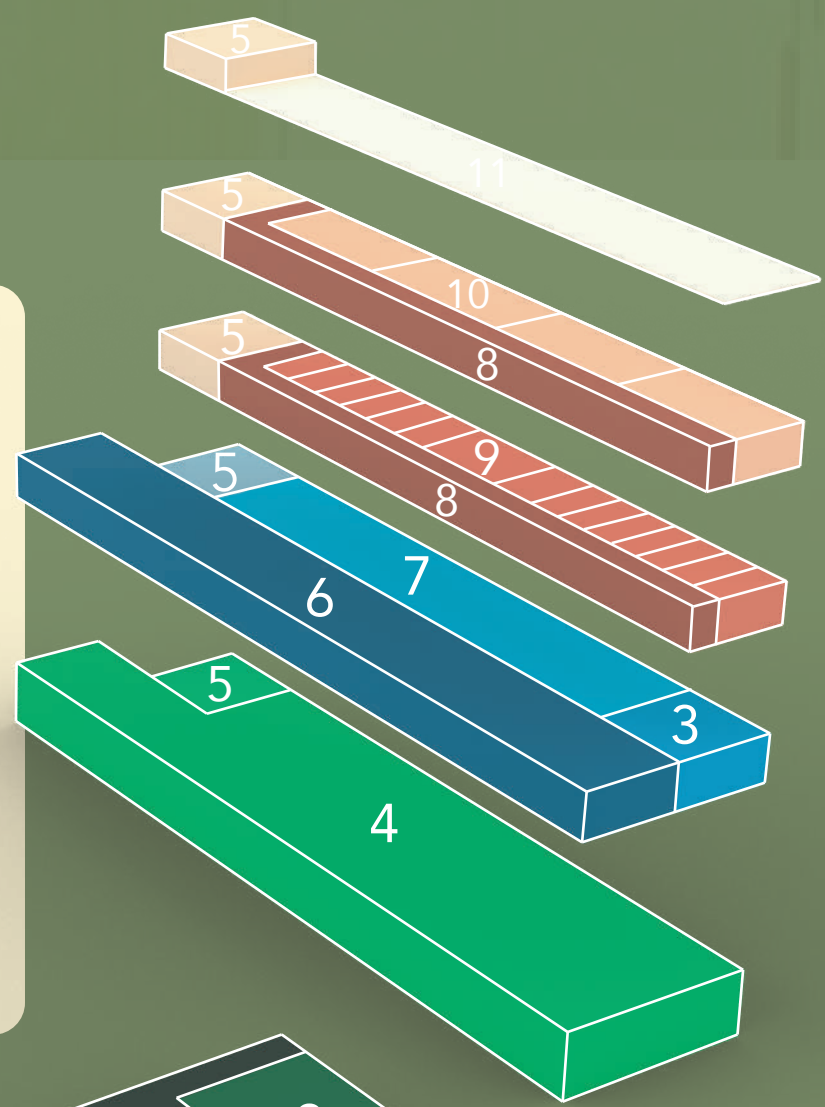
The Harvest Hideaway, Vinton's Rice Dryer, holds untapped potential within its foundational structure. This remodel aims to seamlessly integrate three key focuses—recreational, leisure, and entertainment. Spanning 10 acres, the site hosts a range of activities, with a children's park at one end, interconnected through a central hub, encouraging continuous exploration between the Harvest Hideaway Brewery and Festival Center. The leisure aspect permeates the space, offering scattered open grass patches for relaxation and community engagement. Entertainment is at the core of the experience, featuring two parks, a multipurpose building for various activities, and a restaurant/brewery catering to both the local community and the workforce residing in housing at the site's summit. By weaving these three focuses, the Harvest Hideaway emerges as its own destination, providing a blend of recreational opportunities, leisurely spaces, and diverse entertainment options for residents and visitors alike.

SITE MAP 1/64"=1'-0"

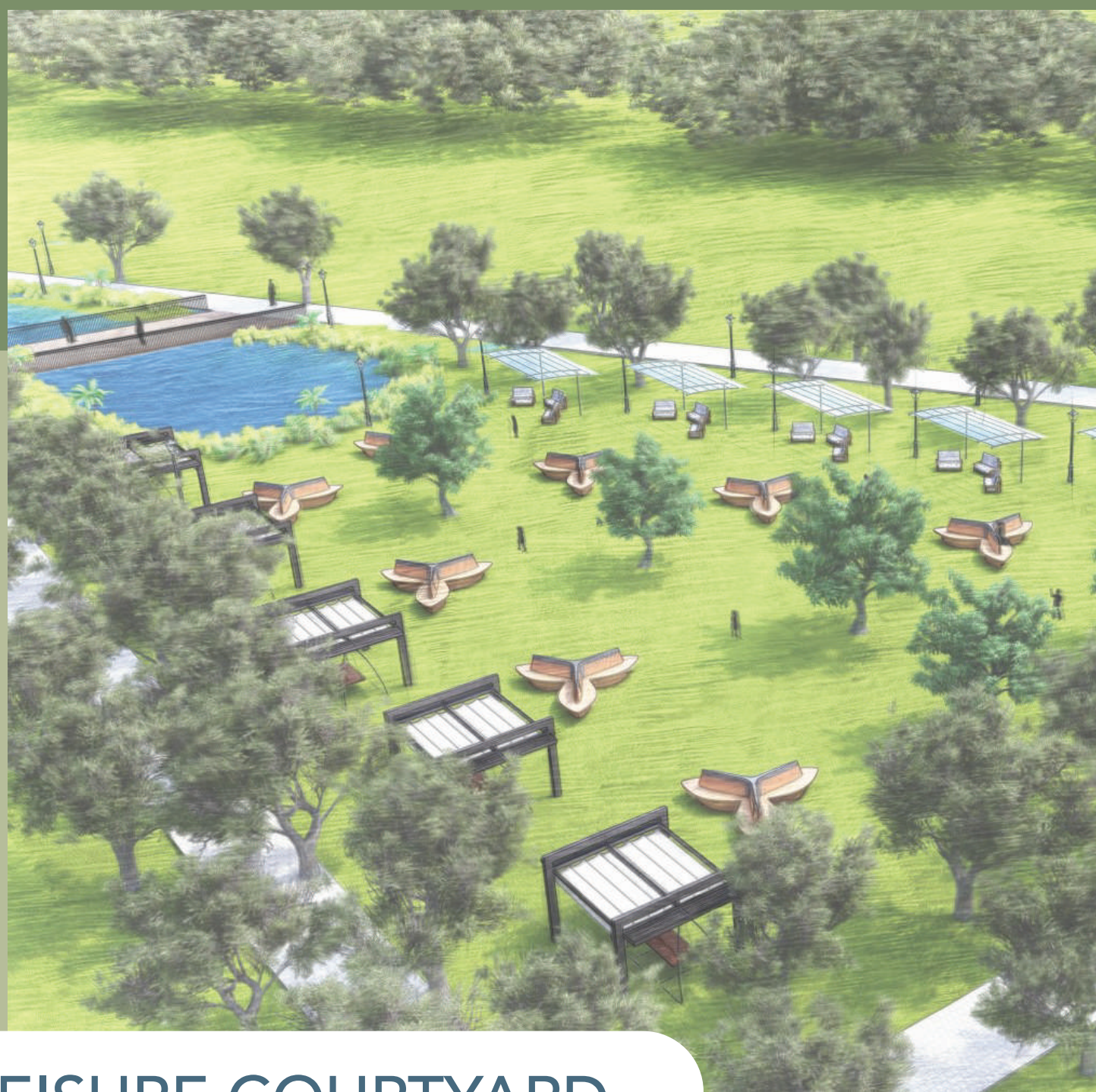


PROCESS DIAGRAM

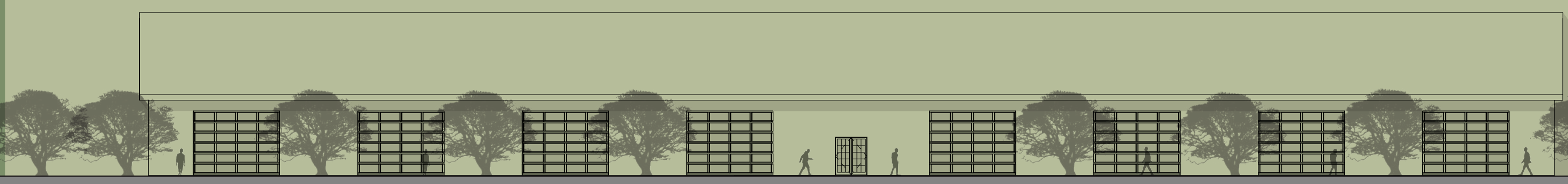
1. Multi - Purpose Center
2. Kitchnette
3. Restrooms
4. Brewery/Restaurant
5. Elevator/ Stairs
6. Brewery Balcony
7. Brewery Tap Bar
8. Hallway
9. Work Force Housing
10. Work Force Amenities
11. Work Froce Courtyard



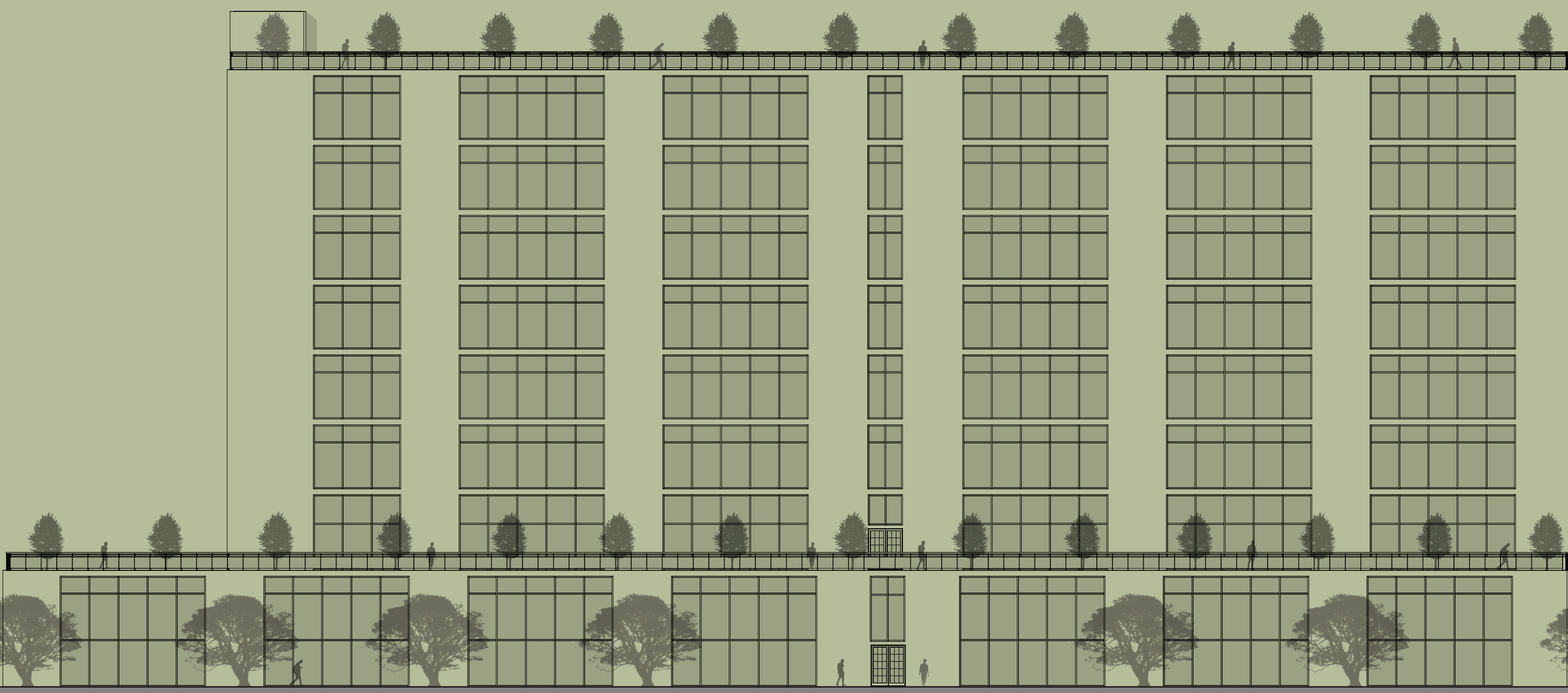
HARVEST HIDEAWAY SECTION SCALE 12:45



LEISURE COURTYARD



HARVEST BREWERY ELEVATION SCALE 1/16"= 1'- 0"



HARVEST HIDEAWAY ELEVATION SCALE 1/16" = 1' 0"