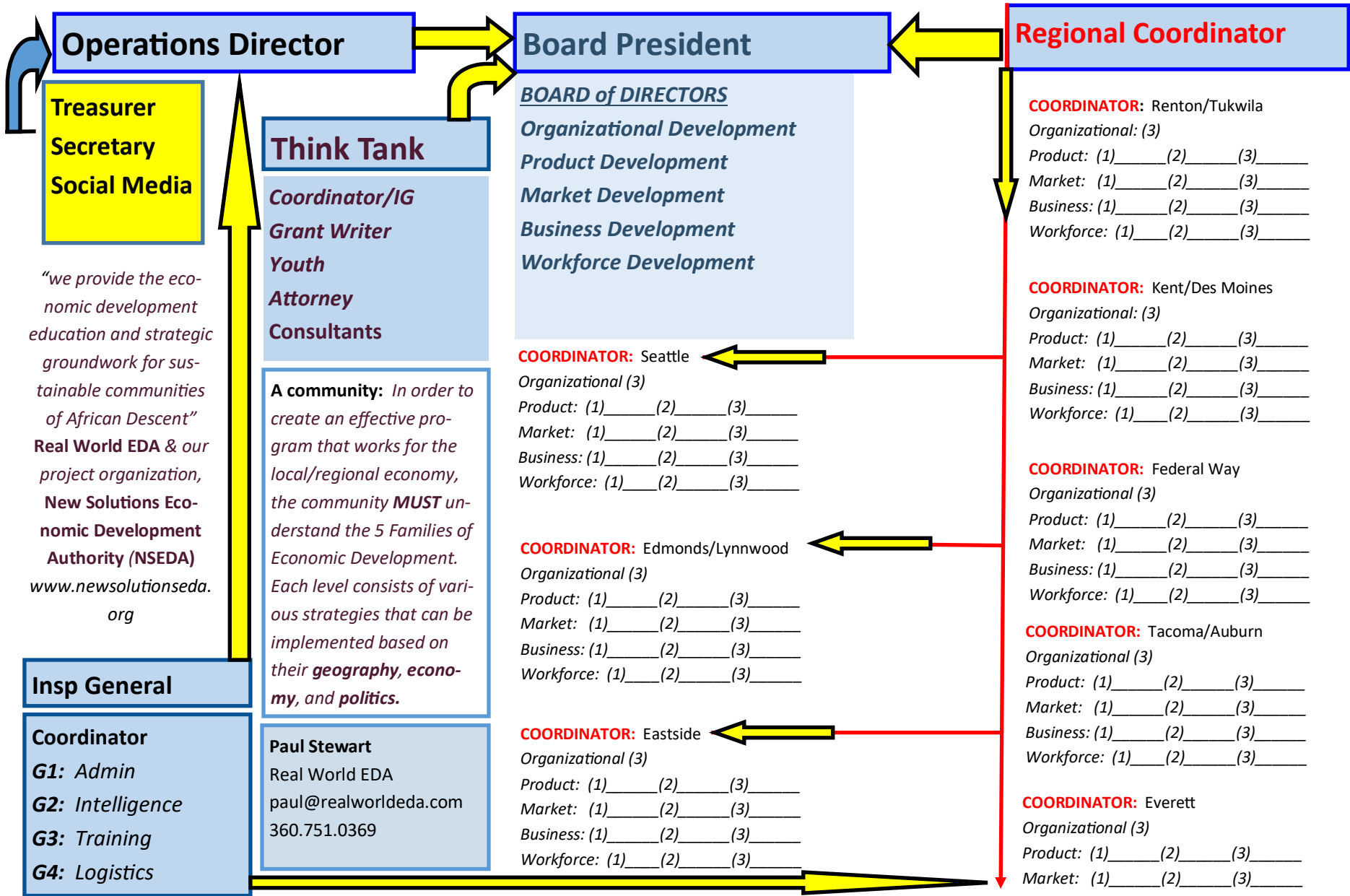


# Puget Sound African Descent *Regional Economic Development Strategic & Tactical Blueprint*



*"we provide the economic development education and strategic groundwork for sustainable communities of African Descent"*  
**Real World EDA & our project organization, New Solutions Economic Development Authority (NSEDA)**  
[www.newsolutionseda.org](http://www.newsolutionseda.org)

**Think Tank**  
**Coordinator/IG**  
**Grant Writer**  
**Youth Attorney**  
**Consultants**

**A community:** In order to create an effective program that works for the local/regional economy, the community **MUST** understand the 5 Families of Economic Development. Each level consists of various strategies that can be implemented based on their **geography, economy, and politics.**

**Insp General**

**Coordinator**  
**G1: Admin**  
**G2: Intelligence**  
**G3: Training**  
**G4: Logistics**

**Paul Stewart**  
 Real World EDA  
 paul@realworldeda.com  
 360.751.0369

**BOARD of DIRECTORS**  
**Organizational Development**  
**Product Development**  
**Market Development**  
**Business Development**  
**Workforce Development**

**COORDINATOR:** Seattle  
 Organizational (3)  
 Product: (1)\_\_\_\_(2)\_\_\_\_(3)\_\_\_\_  
 Market: (1)\_\_\_\_(2)\_\_\_\_(3)\_\_\_\_  
 Business: (1)\_\_\_\_(2)\_\_\_\_(3)\_\_\_\_  
 Workforce: (1)\_\_\_\_(2)\_\_\_\_(3)\_\_\_\_

**COORDINATOR:** Edmonds/Lynnwood  
 Organizational (3)  
 Product: (1)\_\_\_\_(2)\_\_\_\_(3)\_\_\_\_  
 Market: (1)\_\_\_\_(2)\_\_\_\_(3)\_\_\_\_  
 Business: (1)\_\_\_\_(2)\_\_\_\_(3)\_\_\_\_  
 Workforce: (1)\_\_\_\_(2)\_\_\_\_(3)\_\_\_\_

**COORDINATOR:** Eastside  
 Organizational (3)  
 Product: (1)\_\_\_\_(2)\_\_\_\_(3)\_\_\_\_  
 Market: (1)\_\_\_\_(2)\_\_\_\_(3)\_\_\_\_  
 Business: (1)\_\_\_\_(2)\_\_\_\_(3)\_\_\_\_  
 Workforce: (1)\_\_\_\_(2)\_\_\_\_(3)\_\_\_\_

**Regional Coordinator**

**COORDINATOR:** Renton/Tukwila  
 Organizational: (3)  
 Product: (1)\_\_\_\_(2)\_\_\_\_(3)\_\_\_\_  
 Market: (1)\_\_\_\_(2)\_\_\_\_(3)\_\_\_\_  
 Business: (1)\_\_\_\_(2)\_\_\_\_(3)\_\_\_\_  
 Workforce: (1)\_\_\_\_(2)\_\_\_\_(3)\_\_\_\_

**COORDINATOR:** Kent/Des Moines  
 Organizational: (3)  
 Product: (1)\_\_\_\_(2)\_\_\_\_(3)\_\_\_\_  
 Market: (1)\_\_\_\_(2)\_\_\_\_(3)\_\_\_\_  
 Business: (1)\_\_\_\_(2)\_\_\_\_(3)\_\_\_\_  
 Workforce: (1)\_\_\_\_(2)\_\_\_\_(3)\_\_\_\_

**COORDINATOR:** Federal Way  
 Organizational (3)  
 Product: (1)\_\_\_\_(2)\_\_\_\_(3)\_\_\_\_  
 Market: (1)\_\_\_\_(2)\_\_\_\_(3)\_\_\_\_  
 Business: (1)\_\_\_\_(2)\_\_\_\_(3)\_\_\_\_  
 Workforce: (1)\_\_\_\_(2)\_\_\_\_(3)\_\_\_\_

**COORDINATOR:** Tacoma/Auburn  
 Organizational (3)  
 Product: (1)\_\_\_\_(2)\_\_\_\_(3)\_\_\_\_  
 Market: (1)\_\_\_\_(2)\_\_\_\_(3)\_\_\_\_  
 Business: (1)\_\_\_\_(2)\_\_\_\_(3)\_\_\_\_  
 Workforce: (1)\_\_\_\_(2)\_\_\_\_(3)\_\_\_\_

**COORDINATOR:** Everett  
 Organizational (3)  
 Product: (1)\_\_\_\_(2)\_\_\_\_(3)\_\_\_\_  
 Market: (1)\_\_\_\_(2)\_\_\_\_(3)\_\_\_\_  
 Business: (1)\_\_\_\_(2)\_\_\_\_(3)\_\_\_\_  
 Workforce: (1)\_\_\_\_(2)\_\_\_\_(3)\_\_\_\_

# Puget Sound African Descent *Regional Economic Development Project Developments*

## NSEDA Annual Regional Activities

*"we provide the economic development education and strategic groundwork for sustainable communities of African Descent"*

**Real World Economic Development Academy & our project organization, New Solutions Economic Development Authority (NSEDA) .**

**A community:** *In order to create an effective program that works for the local/regional economy, the community **MUST** understand the 5 Families of Economic Development. Each level consists of various strategies that can be implemented based on their **geography, economy, and politics.***

**Paul Stewart**  
Real World EDA  
Founder/Director  
www.realworldeda.com  
paul@realworldeda.com  
360.751.0369

*"EDDs should strategically partner with local economic development organizations". WAEDD Statewide Assessment", by NADO/EDA.*

- Pacific Northwest International Jazz-Zydeco Heritage Festival
- Pacific Northwest Blues / Rhythm/Rock & Roll Heritage-Cultural Festival—**Faye:** *Admin Director* of Festivals and Real World EDA
- Pacific Northwest Regional Economic Development Activities Forum (*Manufacturing, Distribution, Tourism, Personal & Professional Services, Agriculture, Healthcare, Retail and Government*)
- Pacific Northwest National Business Attraction Forum
- Pacific Northwest **Quality of Life Factors** Workshop
- Pacific Northwest Organizational National Partnership: *Strategic and Tactical Planning Workshop*

**COORDINATOR:** Tacoma/Auburn—**Vesey**  
*Organizational (3)*

*Product: (1) \_\_\_\_\_ (2) \_\_\_\_\_ (3) \_\_\_\_\_*

*Market: (1) \_\_\_\_\_ (2) \_\_\_\_\_ (3) \_\_\_\_\_*

*Business: (1) \_\_\_\_\_ (2) \_\_\_\_\_ (3) \_\_\_\_\_*

*Workforce: (1) \_\_\_\_\_ (2) \_\_\_\_\_ (3) \_\_\_\_\_*

### LOCAL PROJECTS:

*Senior Comfort Center, CTSLS Industrial Hemp Cultivation, Positive Connection, NSEDA Mental Health Wellness Support Program, (Community Health issues.. Partnership/Living Library*

**COORDINATOR:** Edmonds/Lynnwood  
*Organizational (3)*

*Product: (1) \_\_\_\_\_ (2) \_\_\_\_\_ (3) \_\_\_\_\_*

*Market: (1) \_\_\_\_\_ (2) \_\_\_\_\_ (3) \_\_\_\_\_*

*Business: (1) \_\_\_\_\_ (2) \_\_\_\_\_ (3) \_\_\_\_\_*

*Workforce: (1) \_\_\_\_\_ (2) \_\_\_\_\_ (3) \_\_\_\_\_*

**COORDINATOR:** Eastside —**Victor**/In training

*Organizational (3)*

*Product: (1) \_\_\_\_\_ (2) \_\_\_\_\_ (3) \_\_\_\_\_*

*Market: (1) \_\_\_\_\_ (2) \_\_\_\_\_ (3) \_\_\_\_\_*

*Business: (1) \_\_\_\_\_ (2) \_\_\_\_\_ (3) \_\_\_\_\_*

**COORDINATOR:** Everett  
*Organizational (3)*

*Product: (1) \_\_\_\_\_ (2) \_\_\_\_\_ (3) \_\_\_\_\_*

*Market: (1) \_\_\_\_\_ (2) \_\_\_\_\_ (3) \_\_\_\_\_*

*Business: (1) \_\_\_\_\_ (2) \_\_\_\_\_ (3) \_\_\_\_\_*

*Workforce: (1) \_\_\_\_\_ (2) \_\_\_\_\_ (3) \_\_\_\_\_*

**COORDINATOR:** Renton/Tukwila

*Organizational: (3)*

*Product: (1) \_\_\_\_\_ (2) \_\_\_\_\_ (3) \_\_\_\_\_*

*Market: (1) \_\_\_\_\_ (2) \_\_\_\_\_ (3) \_\_\_\_\_*

*Business: (1) \_\_\_\_\_ (2) \_\_\_\_\_ (3) \_\_\_\_\_*

*Workforce: (1) \_\_\_\_\_ (2) \_\_\_\_\_ (3) \_\_\_\_\_*

### LOCAL PROJECTS:

**COORDINATOR:** Kent/Des Moines

*Organizational: (3)*

*Product: (1) \_\_\_\_\_ (2) \_\_\_\_\_ (3) \_\_\_\_\_*

*Market: (1) \_\_\_\_\_ (2) \_\_\_\_\_ (3) \_\_\_\_\_*

*Business: (1) \_\_\_\_\_ (2) \_\_\_\_\_ (3) \_\_\_\_\_*

*Workforce: (1) \_\_\_\_\_ (2) \_\_\_\_\_ (3) \_\_\_\_\_*

### LOCAL PROJECTS:

**COORDINATOR:** Federal Way

*Organizational (3)*

*Product: (1) \_\_\_\_\_ (2) \_\_\_\_\_ (3) \_\_\_\_\_*

*Market: (1) \_\_\_\_\_ (2) \_\_\_\_\_ (3) \_\_\_\_\_*

*Business: (1) \_\_\_\_\_ (2) \_\_\_\_\_ (3) \_\_\_\_\_*

*Workforce: (1) \_\_\_\_\_ (2) \_\_\_\_\_ (3) \_\_\_\_\_*

### LOCAL PROJECTS:

**COORDINATOR:** Seattle

*Organizational (3)*

*Product: (1) \_\_\_\_\_ (2) \_\_\_\_\_ (3) \_\_\_\_\_*

*Market: (1) \_\_\_\_\_ (2) \_\_\_\_\_ (3) \_\_\_\_\_*

*Business: (1) \_\_\_\_\_ (2) \_\_\_\_\_ (3) \_\_\_\_\_*

*Workforce: (1) \_\_\_\_\_ (2) \_\_\_\_\_ (3) \_\_\_\_\_*

### LOCAL PROJECTS:

**Vesey Whitaker,**  
Tacoma Coordinator  
& Acting Regional  
Coordinator in Training



Our *"economic activity"*  
**FISCAL SPONSOR** for our  
Pacific Northwest International Jazz-Zydeco Heritage Festival, Labor Day Weekend, Sept 4th, 5th, & 6th, 2021.  
Visit the **"Greatest Show on**

[www.pacificnorthwestjazz.com](http://www.pacificnorthwestjazz.com)

**Real World Economic Development Academy**

NSEDA New Solutions Economic Development Authority [www.newsolutionseda.org](http://www.newsolutionseda.org)