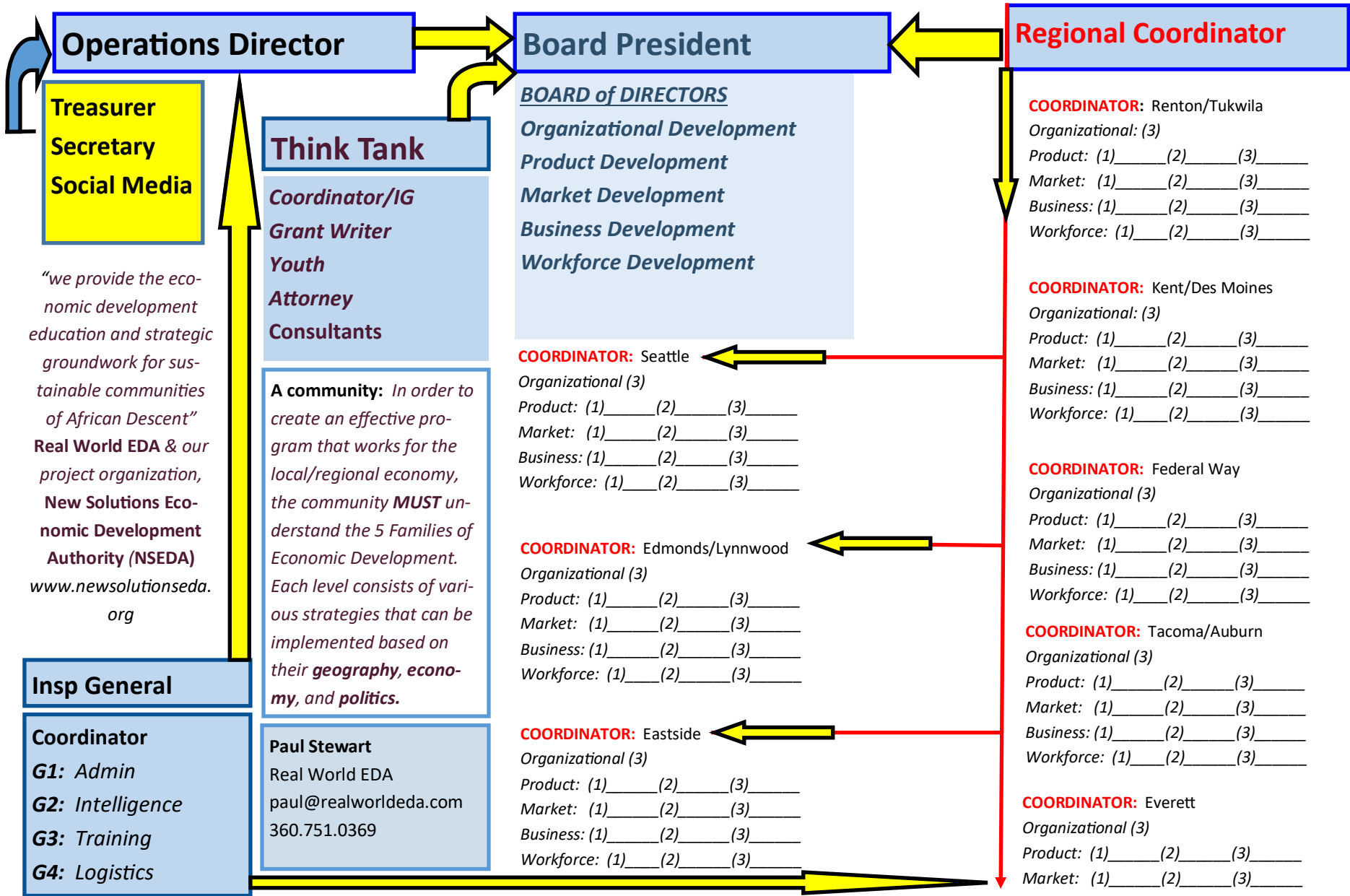


Puget Sound African Descent *Regional Economic Development Strategic & Tactical Blueprint*



**Treasurer
Secretary
Social Media**

"we provide the economic development education and strategic groundwork for sustainable communities of African Descent"
Real World EDA & our project organization, New Solutions Economic Development Authority (NSEDA)
www.newsolutionseda.org

Think Tank
**Coordinator/IG
Grant Writer
Youth Attorney
Consultants**

A community: *In order to create an effective program that works for the local/regional economy, the community **MUST** understand the 5 Families of Economic Development. Each level consists of various strategies that can be implemented based on their **geography, economy, and politics.***

Insp General
Coordinator
G1: Admin
G2: Intelligence
G3: Training
G4: Logistics

Paul Stewart
 Real World EDA
 paul@realworldeda.com
 360.751.0369

BOARD of DIRECTORS
Organizational Development
Product Development
Market Development
Business Development
Workforce Development

COORDINATOR: Seattle
 Organizational (3)
 Product: (1) (2) (3)
 Market: (1) (2) (3)
 Business: (1) (2) (3)
 Workforce: (1) (2) (3)

COORDINATOR: Edmonds/Lynnwood
 Organizational (3)
 Product: (1) (2) (3)
 Market: (1) (2) (3)
 Business: (1) (2) (3)
 Workforce: (1) (2) (3)

COORDINATOR: Eastside
 Organizational (3)
 Product: (1) (2) (3)
 Market: (1) (2) (3)
 Business: (1) (2) (3)
 Workforce: (1) (2) (3)

Regional Coordinator

COORDINATOR: Renton/Tukwila
 Organizational: (3)
 Product: (1) (2) (3)
 Market: (1) (2) (3)
 Business: (1) (2) (3)
 Workforce: (1) (2) (3)

COORDINATOR: Kent/Des Moines
 Organizational: (3)
 Product: (1) (2) (3)
 Market: (1) (2) (3)
 Business: (1) (2) (3)
 Workforce: (1) (2) (3)

COORDINATOR: Federal Way
 Organizational (3)
 Product: (1) (2) (3)
 Market: (1) (2) (3)
 Business: (1) (2) (3)
 Workforce: (1) (2) (3)

COORDINATOR: Tacoma/Auburn
 Organizational (3)
 Product: (1) (2) (3)
 Market: (1) (2) (3)
 Business: (1) (2) (3)
 Workforce: (1) (2) (3)

COORDINATOR: Everett
 Organizational (3)
 Product: (1) (2) (3)
 Market: (1) (2) (3)
 Business: (1) (2) (3)
 Workforce: (1) (2) (3)