

# MAGNETRACE SINK CUT OUT TEMPLATING TOOL USER INSTRUCTIONS

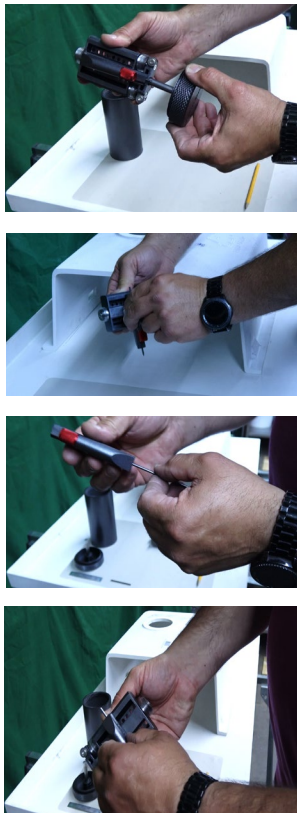
**Introduction:** The Magnettrace tool is specifically designed for making accurate cut-out lines for undermount sink installations, eliminating the need for templates. Please read these instructions carefully to understand the product's capabilities and safety aspects, ensuring successful and safe use for years to come.

## COMPONENTS



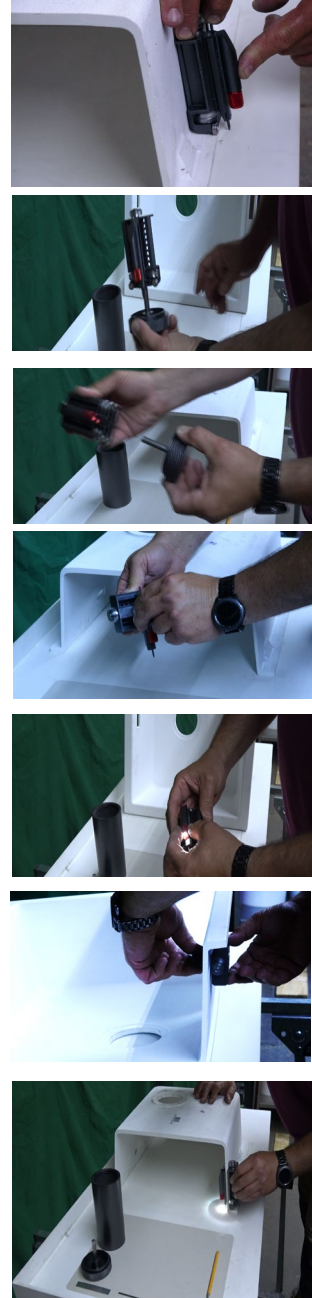
## Preparations Before Use:

1. Remove the Magnettrace tool from its protective case and separate the lid stand by pulling apart (The lid stand is attached to the tracer by magnetic force).
2. Remove the Sketcher from the Tracer, twist 90 degrees and pull apart.
3. Insert a graphite pencil from the protective case into the Sketcher.
4. Attach the Sketcher to the Tracer by aligning it at a 90-degree angle. Twist to secure and place on the lid stand.



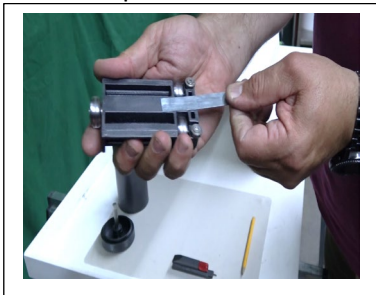
## Operating Magnetrace:

1. Position the Magnettrace tool on the outer edge of the sink, ensuring it rests on the sink edge to adjust the pencil.
2. Attach the Magnettrace tool to its lid stand and put aside and reverse the sink opening face up.
7. Remove the Magnettrace tool from its lid stand.
6. Remove the Sketcher from the Tracer, twist 90 degrees and pull apart.
5. Turn on the onboard LED light on the Sketcher by twisting it clockwise.
4. Place the Sketcher inside and the Tracer outside the sink, opposite the Sketcher, until they connect magnetically.
3. Place the sink facing down on worktop. Move the tracer to the sink edge then move it horizontally over the sink parameters to trace the cut-out line.
8. Once completed, follow the above instructions in reverse to safely put the Magnettrace tool in its storage box.



### Tips for Using Magnetrace Tool:

For stainless steel sinks, reduce the magnetic force by placing the shielding metal strip on the Tracer body. For composite sinks, remove the shielding metal strip to increase it.



Always check the Sketcher surface for metal dust or dirt before use to avoid scratching the sink.